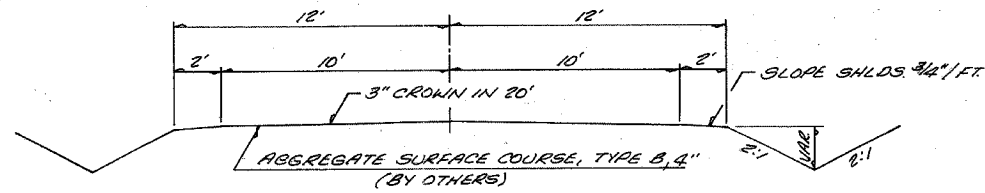
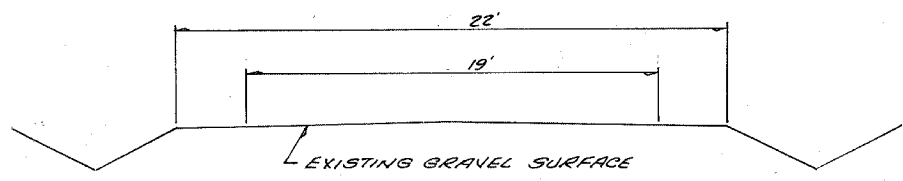


| | | | | |
|---------------------|-----------------|---------|--------------|-------|
| F.A.S. ROUTE NO. | SECTION | COUNTY | TOTAL SHEETS | SHEET |
| 05-04118-00-BR | CRAWFORD | IL | 10 | 2 |
| STA. 1+00 | TO STA. 8+24.10 | | | |
| FED. ROAD DIST. NO. | ILLINOIS | PROJECT | | |

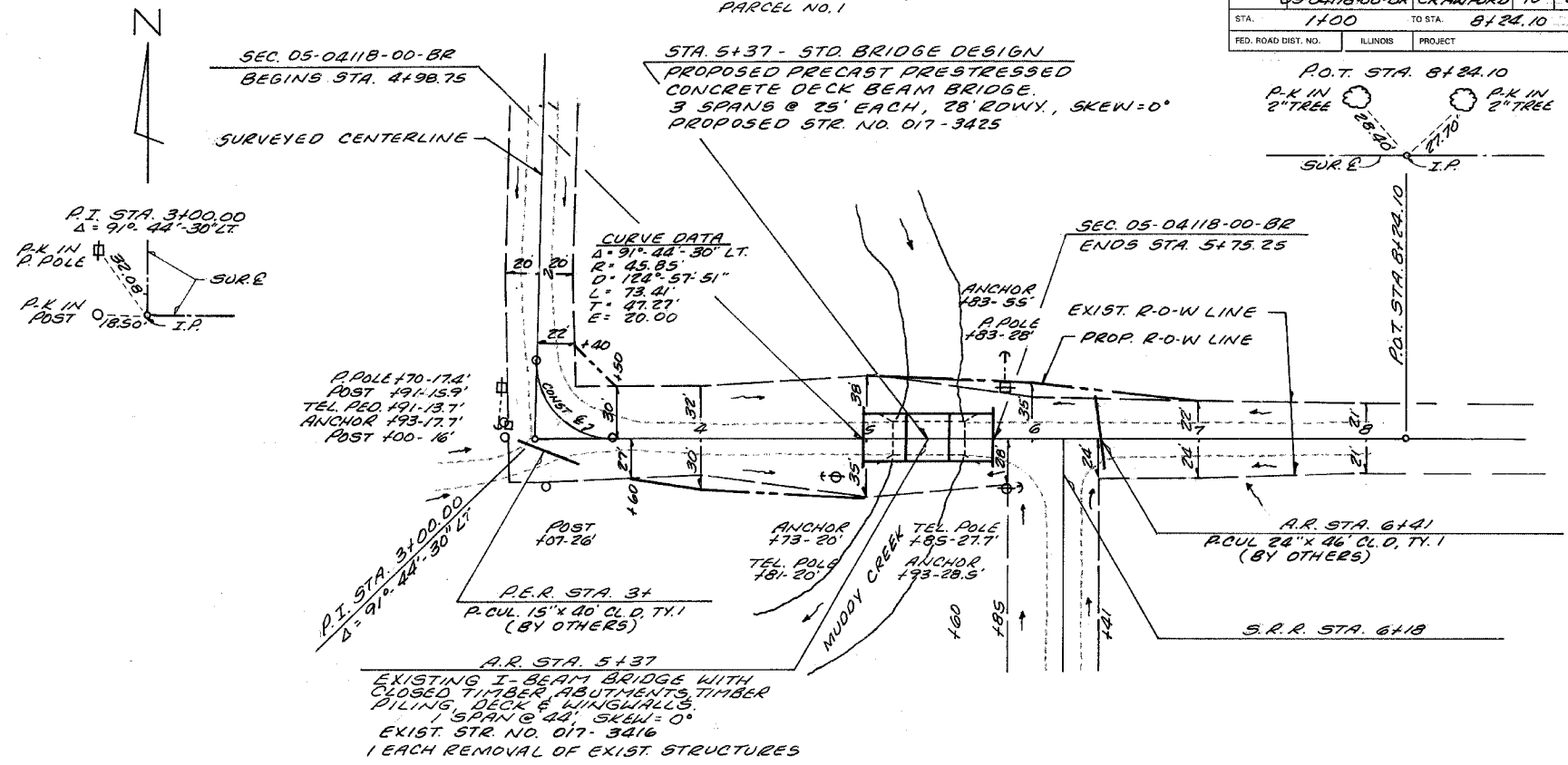
STERLE B. LINGAFELTER, ETUX.
PARCEL NO. 1



TYPICAL SECTION OF PROPOSED IMPROVEMENT
(BY OTHERS)



DETAIL OF EXISTING ROADWAY



STA. 5+37 - STD. BRIDGE DESIGN
PROPOSED PRECAST PRESTRESSED
CONCRETE DECK BEAM BRIDGE
3 SPANS @ 25' EACH, 28' ROWY., SKEW=0°
PROPOSED STR. NO. 017-3425

CURVE DATA
Δ = 91° 44' 30" LT.
R = 45.85'
L = 73.41'
T = 47.27'
E = 20.00'

A.R. STA. 5+37
EXISTING I-BEAM BRIDGE WITH
CLOSED TIMBER ABUTMENTS, TIMBER
PILING, DECK & WINGWALLS.
1 SPAN @ 44', SKEW=0°
EXIST. STR. NO. 017-3416
1 EACH REMOVAL OF EXIST. STRUCTURES

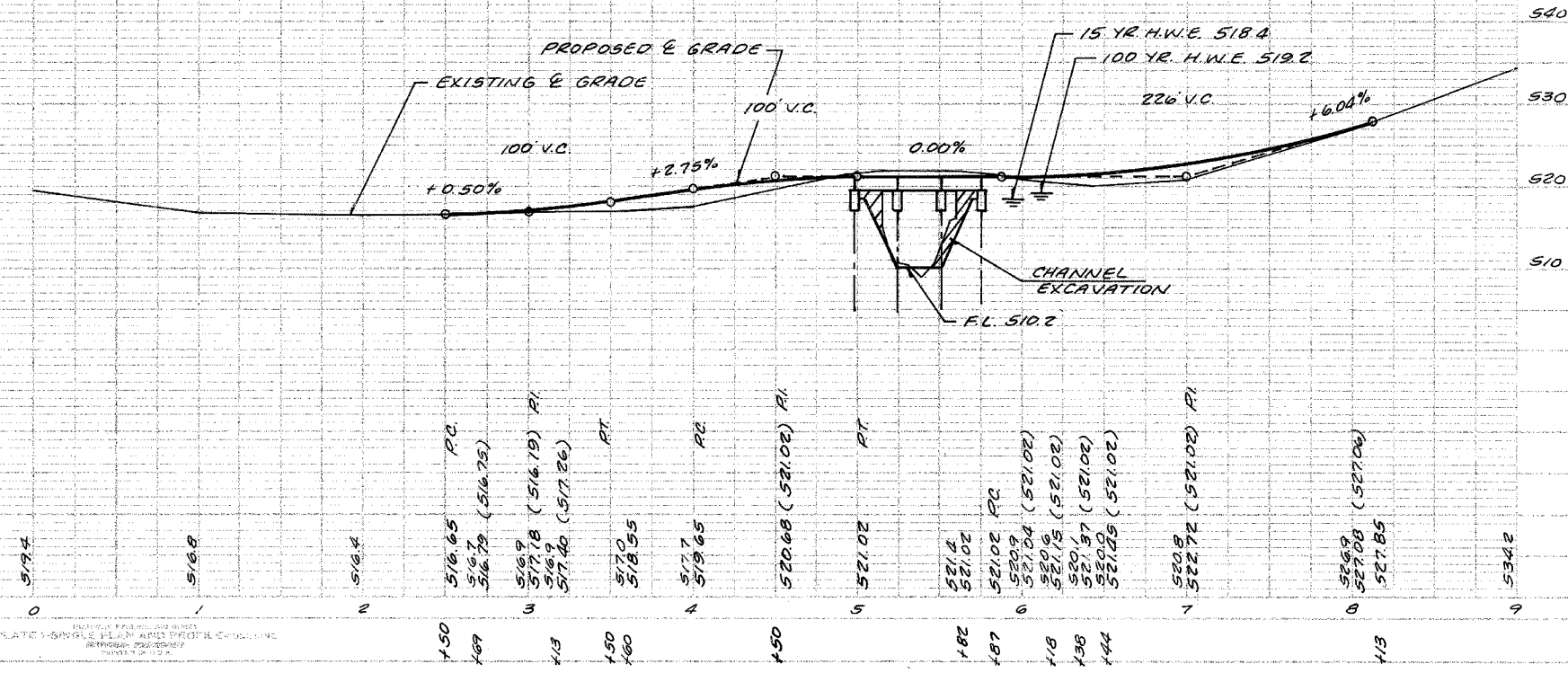
RICHARD A. WECK & MARTHA J. WECK
PARCEL NO. 2

SEEDING TO BE DONE
BY OTHERS

B.M. #1 ELEV. 516.87
P.K. IN POWER POLE
17.4' RT. STA. 2+70

CHANNEL EXCAVATION = 163 C.Y.

UTILITIES
ELECTRIC - NORRIS ELECTRIC COOP
8543N STATE HWY. 130
NEWTON, IL 62448
PH. 618-783-8765
TELEPHONE - VERIZON
225 E CHESTNUT ST.
OLNEY, IL 62450
PH. 618-395-6189



| | |
|------|-------------|
| DATE | DESCRIPTION |
| | |
| | |
| | |
| | |

| | |
|------|-------------|
| DATE | DESCRIPTION |
| | |
| | |
| | |
| | |