

RTE.	SECTION	COUNTY	TOTAL SHEETS	SHEET NO.
T.R. 140	*	SHELBY	11	1
PROJECT BROS-173(134)				

* 00-09118-00-BR

STATE OF ILLINOIS
DEPARTMENT OF TRANSPORTATION
PLANS FOR PROPOSED
HIGHWAY BRIDGE PROGRAM
PROJECT NO. BROS-173(134)
T.R. 140 OVER MITCHELL CREEK
SECTION 00-09118-00-BR
SHELBY COUNTY
JOB NO. C-97-070-06

INDEX OF SHEETS

- 1 - TITLE SHEET
- 2 - SUMMARY OF QUANTITIES, DETAILS, & TYPICAL SECTIONS
- 3 - PLAN & PROFILE
- 4 - GENERAL PLAN & ELEVATION
- 5 - SUPERSTRUCTURE
- 6 - RAILING
- 7 - ABUTMENTS
- 8 - PIERS
- 9 - PILE DETAILS
- 10 & 11 - CROSS SECTIONS

STANDARDS

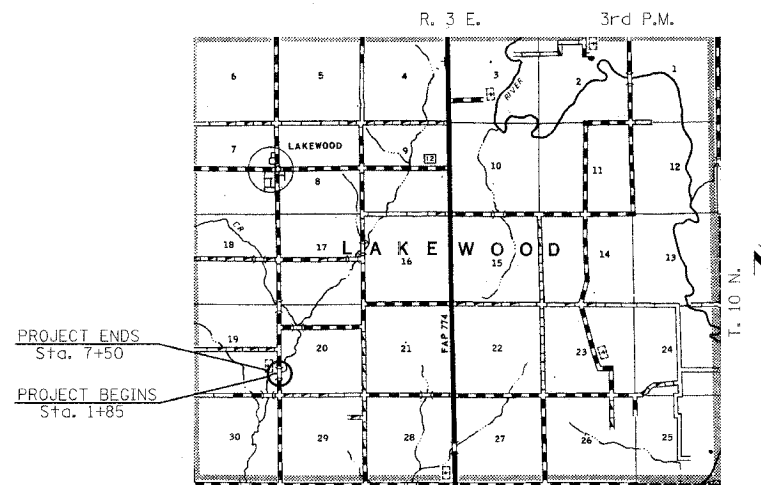
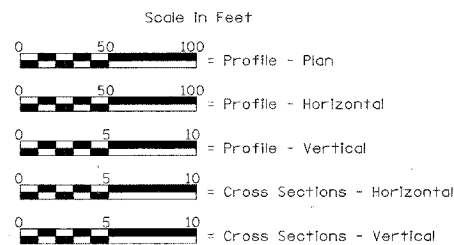
- STANDARD 000001-04
- STANDARD 280001-02
- STANDARD 515001-02
- STANDARD 635006-02
- STANDARD 702001-06
- STANDARD BLR 21-6

DESCRIPTION

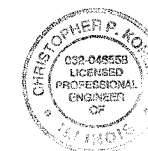
- STANDARD SYMBOLS, ABBREVIATIONS AND PATTERNS
- TEMPORARY EROSION CONTROL SYSTEMS
- NAME PLATE FOR BRIDGES
- REFLECTOR AND TERMINAL MARKER PLACEMENT
- TRAFFIC CONTROL DEVICES
- TYPICAL APPLICATION OF TRAFFIC CONTROL DEVICES FOR CONSTRUCTION ON RURAL LOCAL HIGHWAYS

EXISTING STRUCTURE: TWO SPAN TIMBER DECK BRIDGE ON STEEL STRINGERS. CLOSED TIMBER ABUTMENTS AND WINGWALLS, TIMBER PILE BENT PIERS. ±66'-3" BK.-BK. ABUTMENTS, ±21'-0" CLEAR DECK WIDTH. ±0° SKEW. EXISTING STRUCTURE NO. 087-3127

PROPOSED STRUCTURE: THREE SPAN REINFORCED CONCRETE DECK BEAM (17") BRIDGE ON OPEN CONCRETE ABUTMENTS AND SOLID CONCRETE PIERS. 89'-0" BK.-BK. ABUTMENTS, 23'-1/4" (SPANS 1 & 3), 37'-8 3/4" (SPAN 2). 24'-0" CLEAR DECK WIDTH, TYPE S1 RAILING, 10° SKEW RT. FORWARD. PROPOSED STRUCTURE NO. 087-3525



Land Section - 19
Land Quarter Section - S.E.
Design Class: Local Road (Non-Urban)
A.D.T. = 109(2004)
A.D.T. <=150(2027)
30 M.P.H. Design Speed



Christopher P. Kollman 2/14/06
EXPIRATION DATE 11/30/07

APPROVED	3-13-06	<i>S. De...</i>	COUNTY ENGINEER
APPROVED	3-13-06	<i>Bill...</i>	ROAD COMMISSIONER
PASSED	4/7-06	<i>Maura...</i>	DISTRICT SEVEN ENGINEER OF LOCAL ROADS & STREETS
Released For Bid Based on Limited Review	4/7-06	<i>Christina...</i>	DEPUTY DIRECTOR OF HIGHWAYS, REGION FOUR ENGINEER

STATE OF ILLINOIS
DEPARTMENT OF TRANSPORTATION

TOLL FREE
"JOINT UTILITY LOCATION INFORMATION FOR EXCAVATORS"
(CALL 1-800-832-0123)
1-800-832-0123

CONTRACT NO. 95467

FILE NAME: SCL407'S (REV. 2/9/05)