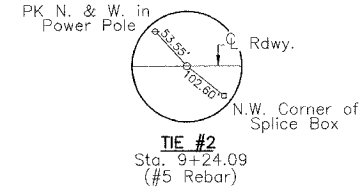
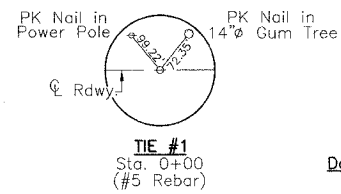


SEC. 19, T.10 N., R.3 E., 3rd P.M.

CONTRACT NO. 95467

RTE.	SECTION	COUNTY	TOTAL SHEETS	SHEET NO.
T.R. 140	*	SHELBY	11	3

PROJECT BROS-173(134)
* 00-09118-00-BR

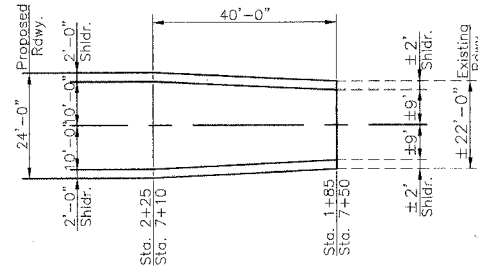
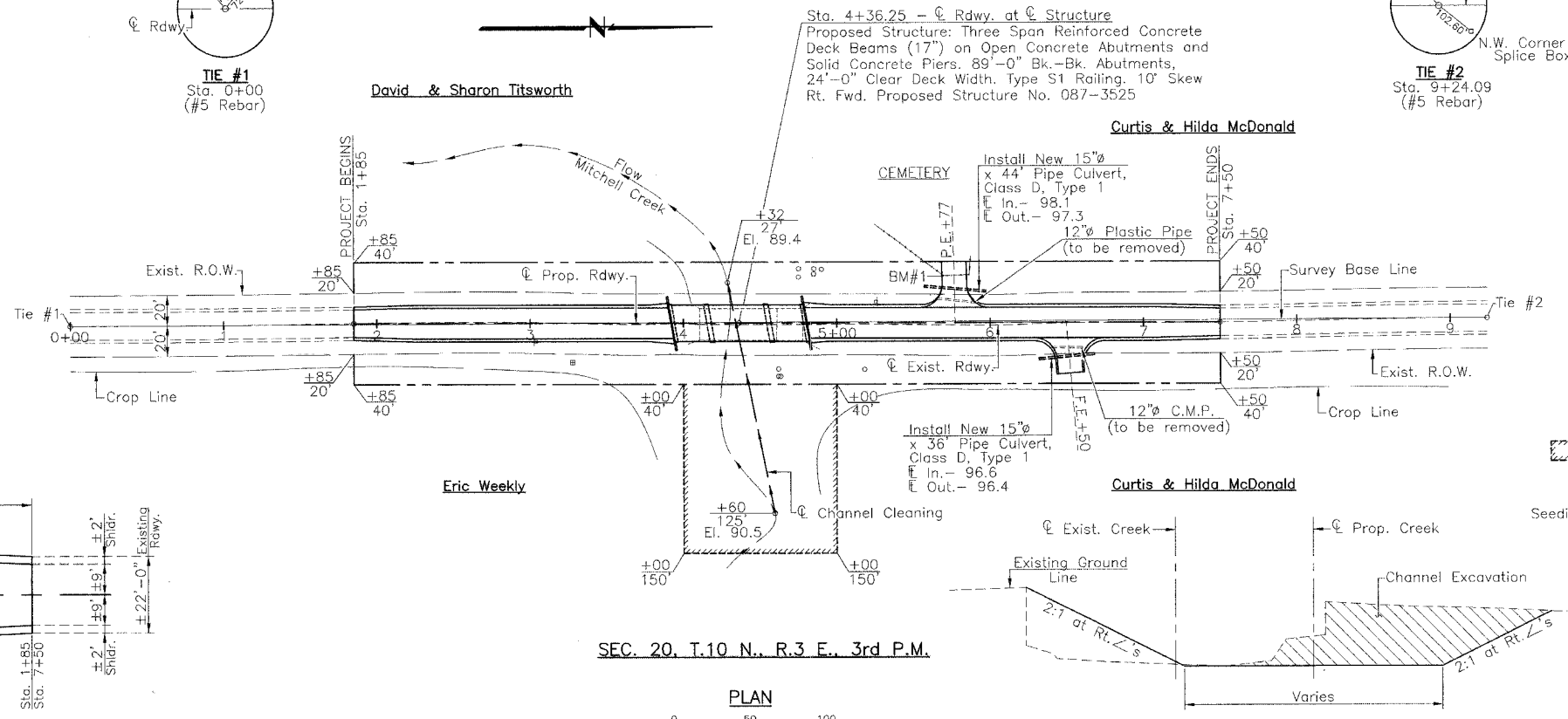


SCHEDULE TREE REMOVAL (OVER 15 UNITS DIAMETER)

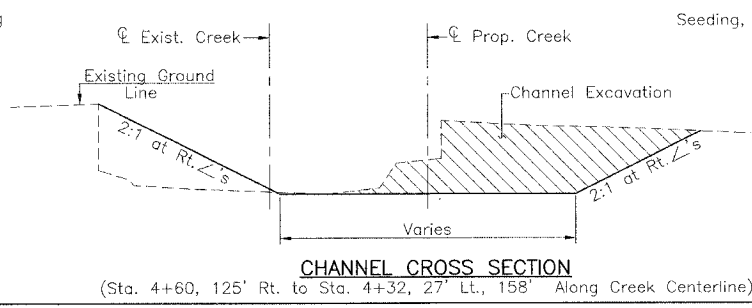
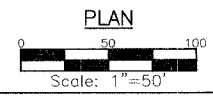
Location	Quantity (Units)
Sta. 4+62 35' Rt.	48
Sta. 4+62 35' Rt.	44
Sta. 5+18 31' Rt.	48
Total	140

SCHEDULE TREE REMOVAL (6 TO 15 UNITS DIAMETER)

Location	Quantity (Units)
Sta. 4+62 30' Rt.	8
Sta. 4+75 35' Lt.	15
Sta. 4+75 30' Lt.	8
Sta. 4+85 30' Lt.	6
Sta. 4+85 32' Lt.	8
Sta. 4+90 35' Lt.	8
Total	53

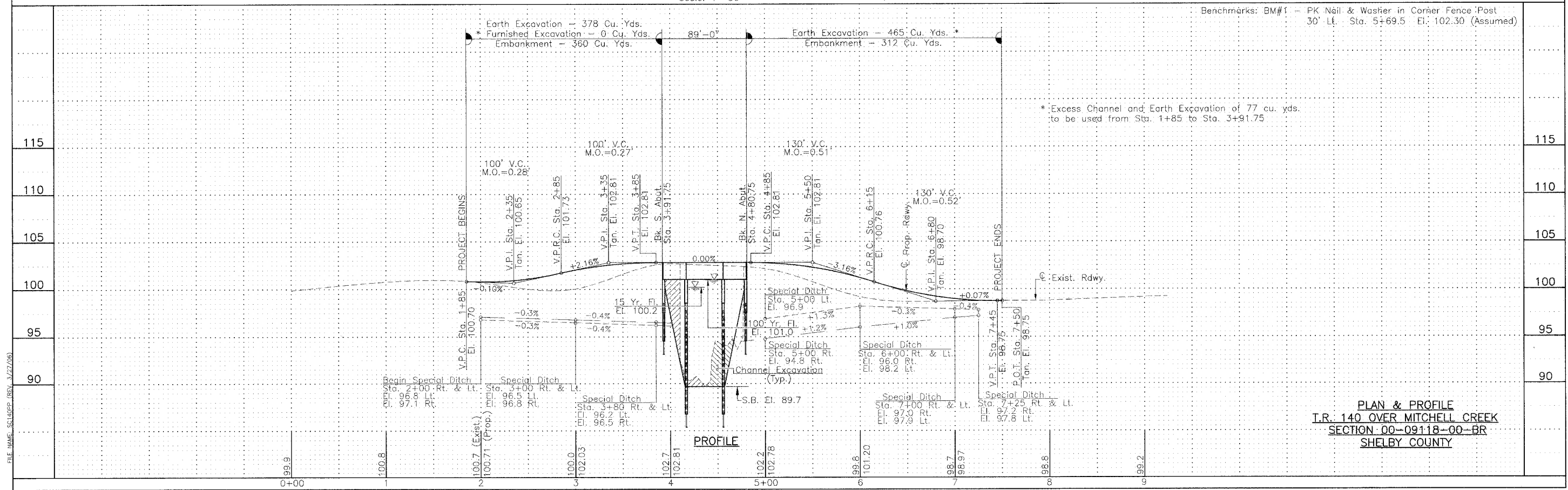


SEC. 20, T.10 N., R.3 E., 3rd P.M.



Seeding, Class 2 - Sta. 1+85 to Sta. 7+50 R.O.W. to R.O.W. - 0.70 Acre

UTILITIES
Shelby Electric Cooperative
North Route 128
Shelbyville, Illinois 62565
Consolidated Communications Inc.
121 South 17th Street
Mattoon, Illinois 61938-3915
1-217-235-3311



PLAN & PROFILE
T.R. 140 OVER MITCHELL CREEK
SECTION 00-09118-00-BR
SHELBY COUNTY

FILE NAME: SCLHOP (REV. 3/22/08)