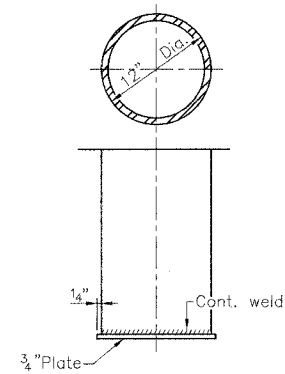
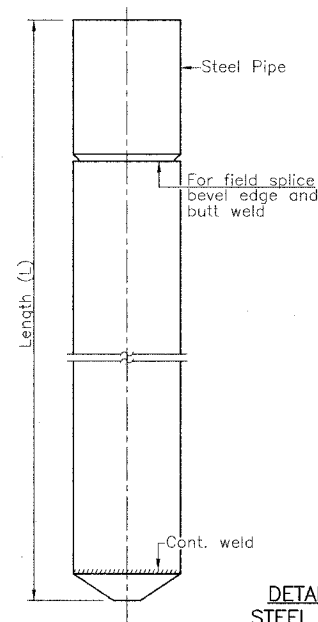


RTE.	SECTION	COUNTY	TOTAL SHEETS	SHEET NO.
T.R. 140	*	SHELBY	11	9
PROJECT BROS-173(134)				

* 00-09118-00-BR

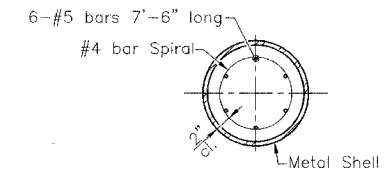
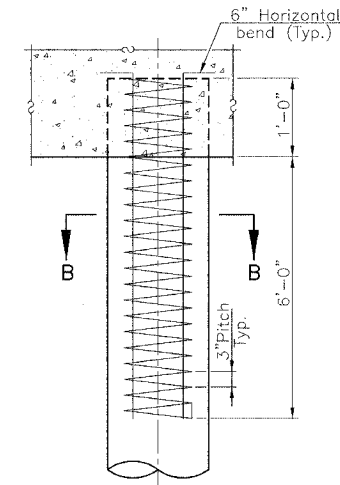
The cost of Reinforcement is incidental to the cost of furnishing piles.

Notes: Driving and bearing ends of pipe shall be cut square.
 The thickness of the shell shall be 0.2500 inches with a tolerance of 5%.
 The shell shall be in accordance with Article 1006.05(a) of the Standard Specifications.



**OPTIONAL
FLAT END**

**DETAIL OF CYLINDRICAL
STEEL SHELL FOR CAST IN
PLACE CONCRETE PILES**



SECTION B-B

**DETAIL OF REINFORCEMENT
FOR METAL SHELLS**

FILE NAME: SCL4002 (REV. 2/13/06)

**PILE DETAILS
I.R. 140 OVER MITCHELL CREEK
SECTION 00-09118-00-BR
SHELBY COUNTY**