

RTE.	SECTION	COUNTY	TOTAL SHEETS	SHEET NO.
TR183	99-01120-00-BR	SHELBY	14	1

STATE OF ILLINOIS
DEPARTMENT OF TRANSPORTATION
DIVISION OF HIGHWAYS

PLANS FOR PROPOSED
BRIDGE REPLACEMENT AND
REHABILITATION PROGRAM

SECTION 99-01120-00-BR
ASH GROVE TOWNSHIP
TR 183
SHELBY COUNTY

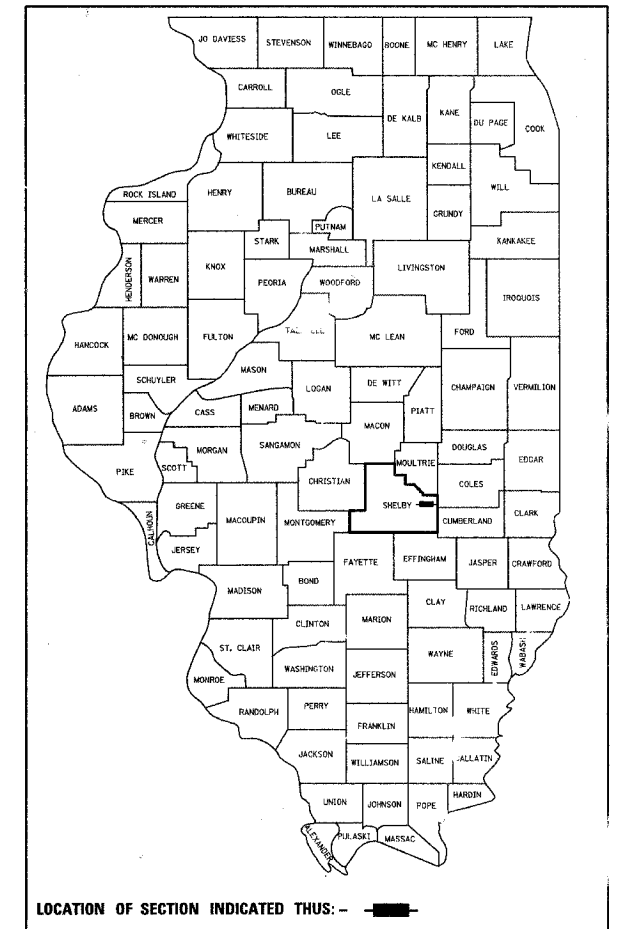
JOB NO. C-97-084-06
PROJECT NO. BROS-173 (125)

INDEX OF SHEETS

- 1 COVER SHEET
- 2 SUMMARY OF QUANTITIES
- 3 PLAN AND PROFILE
- 4 BRIDGE PLAN AND ELEVATION
- 5 DECK BEAM DETAILS
- 6 TYPE S-1 STEEL RAILING
- 7 ABUTMENT DETAILS
- 8 EROSION CONTROL PLAN
- 9-14 CROSS SECTIONS

STANDARDS

- 000001-04 STANDARD SYMBOLS, ABBREVIATIONS AND PATTERNS.
- 280001-02 TEMPORARY EROSION CONTROL SYSTEMS.
- 515001-02 NAME PLATES FOR BRIDGES.
- 630001-06 STEEL PLATE BEAM GUARDRAIL
- 630301-03 SHOULDER WIDENING FOR TYPE 1 GUARDRAIL TERMINALS
- 631026-02 TRAFFIC BARRIER TERMINAL TYPE 5 & 5A
- 635006-02 REFLECTOR AND TERMINAL MARKER PLACEMENT
- 6350011-01 REFLECTOR MARKER AND MOUNTING DETAILS
- 702001-06 TRAFFIC CONTROL DEVICES.
- BLR 21-6 TYPICAL APPLICATION OF TRAFFIC CONTROL DEVICES FOR CONSTRUCTION ON RURAL LOCAL HIGHWAYS.



J.U.L.I.E.
JOINT UTILITY LOCATION INFORMATION FOR EXCAVATION
1-800-892-0123

APPROVED 3-24 2006
L. Alford
COUNTY ENGINEER

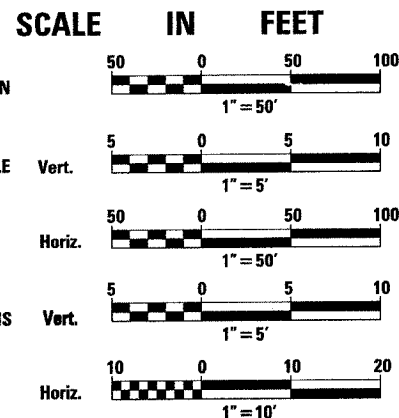
PASSED 4-18 2006
Maureen Kastl
DISTRICT SEVEN ENGINEER OF
LOCAL ROADS AND STREETS

Releasing For
Bid Based on
Limited Review 4-18 2006
Christine M. Roodolph
DEPUTY DIRECTOR OF HIGHWAYS
REGION FOUR ENGINEER

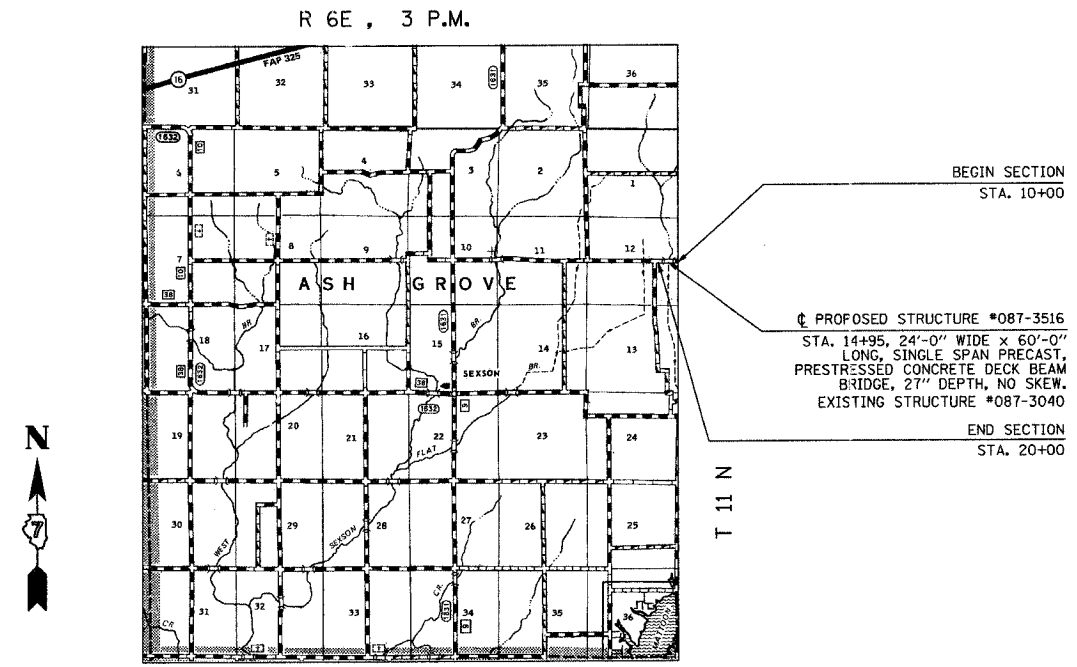
STATE OF ILLINOIS
DEPARTMENT OF TRANSPORTATION

APPROVED Wm. Brian Ambrose 2-29-06
ASH GROVE TWP. HIGHWAY COMM.

Andy L. Baker 3/23/06
ANDY L. BAKER, P.E. LICENSE EXPIRATION DATE 11-30-07



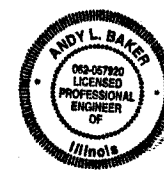
ADT-CURRENT 220 DESIGN 270
CLASS-LOCAL ROAD
DESIGN SPEED-40 MPH



LOCATION MAP



TOTAL LENGTH OF PROJECT = 1000 FT. = 0.189 MILES
NET LENGTH OF PROJECT = 1000 FT. = 0.189 MILES



CONTRACT NO. 95471