

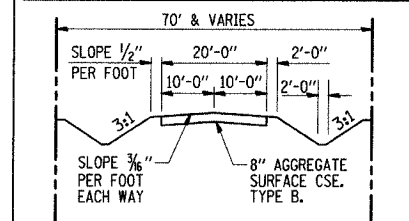
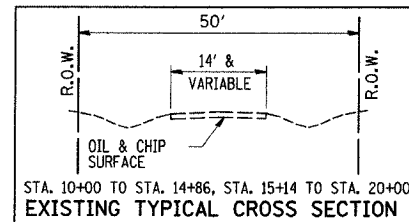
TR. RTE.	SECTION	COUNTY	TOTAL SHEETS	SHEET NO.
183	99-01120-00-BR	SHELBY	14	3
STA. 10+00 TO STA. 20+00				

TEMPORARY DITCH CHECKS

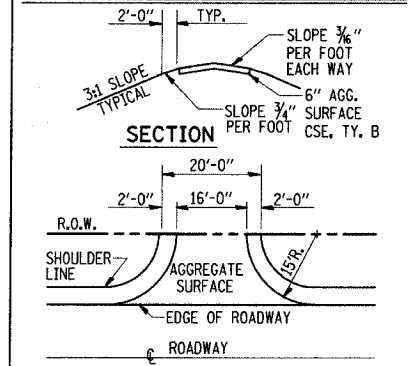
LOCATION	QTY.
LT. & RT. STA. 13+00	2
LT. & RT. STA. 17+60	2
TOTAL	4EA

INLET & PIPE PROTECTION

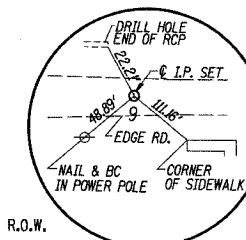
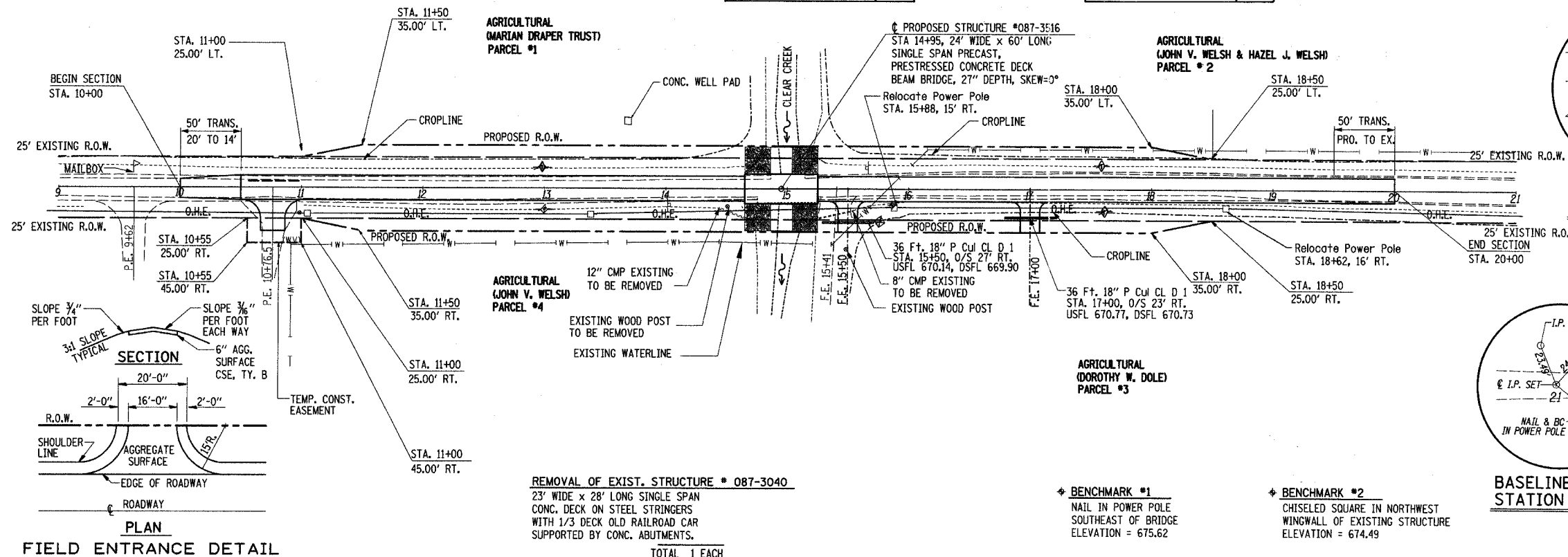
LOCATION	QTY.
RT. STA. 15+86	1
RT. STA. 17+18	1
TOTAL	2EA



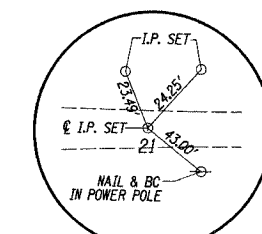
STA. 10+00 TO STA. 14+65, STA. 15+25 TO STA. 20+00  
PROPOSED TYPICAL CROSS SECTION



PRIVATE ENTRANCE DETAIL FIELD ENTRANCE DETAIL



BASELINE TIE STATION 9+00



BASELINE TIE STATION 21+00

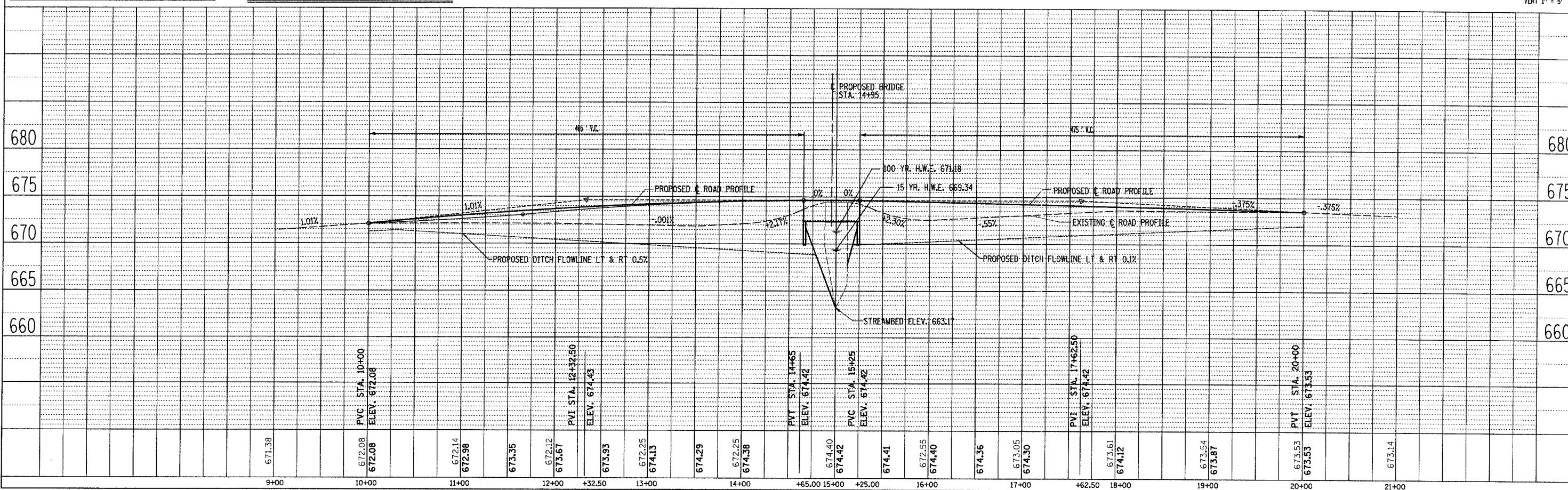


SCALE: HORZ. 1"=50'  
VERT 1"=5'

REMOVAL OF EXIST. STRUCTURE \* 087-3040  
23' WIDE x 28' LONG SINGLE SPAN  
CONC. DECK ON STEEL STRINGERS  
WITH 1/3 DECK OLD RAILROAD CAR  
SUPPORTED BY CONC. ABUTMENTS.  
TOTAL 1 EACH

BENCHMARK #1  
NAIL IN POWER POLE  
SOUTHEAST OF BRIDGE  
ELEVATION = 675.62

BENCHMARK #2  
CHISELED SQUARE IN NORTHWEST  
WINGWALL OF EXISTING STRUCTURE  
ELEVATION = 674.49



DATE	BY
2000	A. BAKER
DATE	BY
DATE	BY

DATE	BY
DATE	BY
DATE	BY