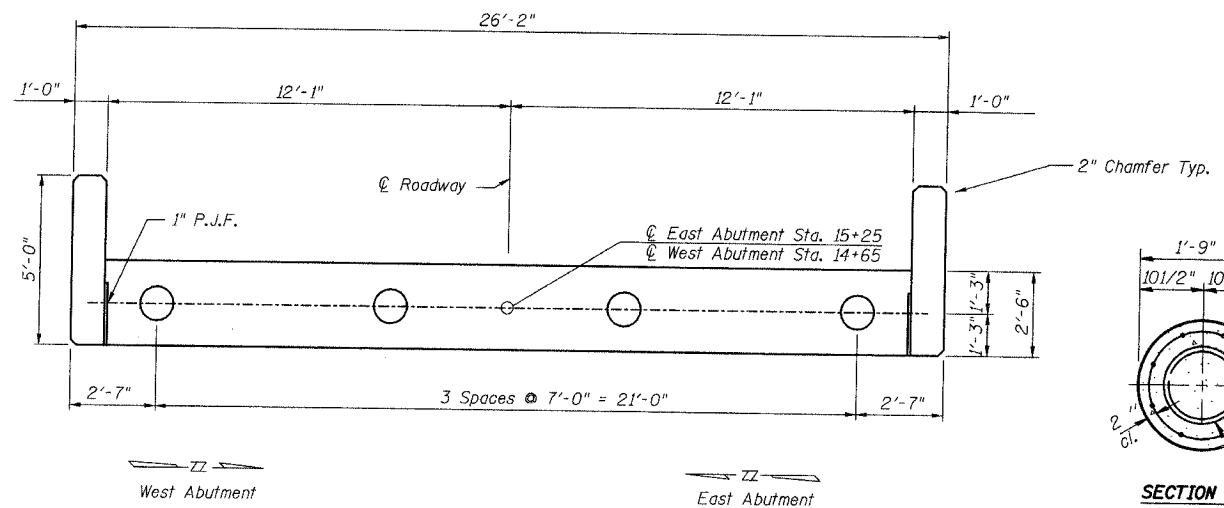
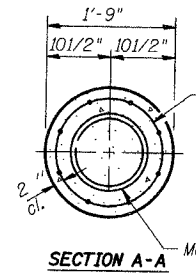


RTE.	SECTION	COUNTY	TOTAL SHEETS	SHEET NO.
TR183	99-01120-00-BR	SHELBY	14	7
STA.	10+00	TO STA.	20+00	

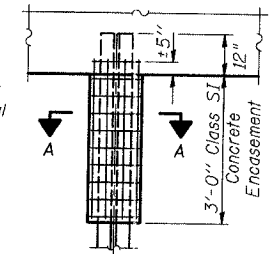


PLAN

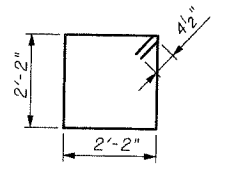


SECTION A-A Metal Shell 12"

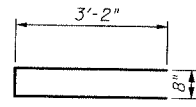
Welded wire fabric 6 x 6-W4.0 x W4.0 weighing 58#/100 sq. ft. The cost of Excavation, Class SI Concrete Encasement and Reinforcement is incidental to Furnishing Piles. Forms for Encasement may be omitted when soil conditions permit.



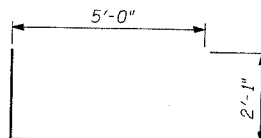
PILE ENCASEMENT DETAIL



BAR s



BAR u1



BAR u

BILL OF MATERIAL

(INCLUDES BOTH ABUTMENTS AND FOUR WINGS)

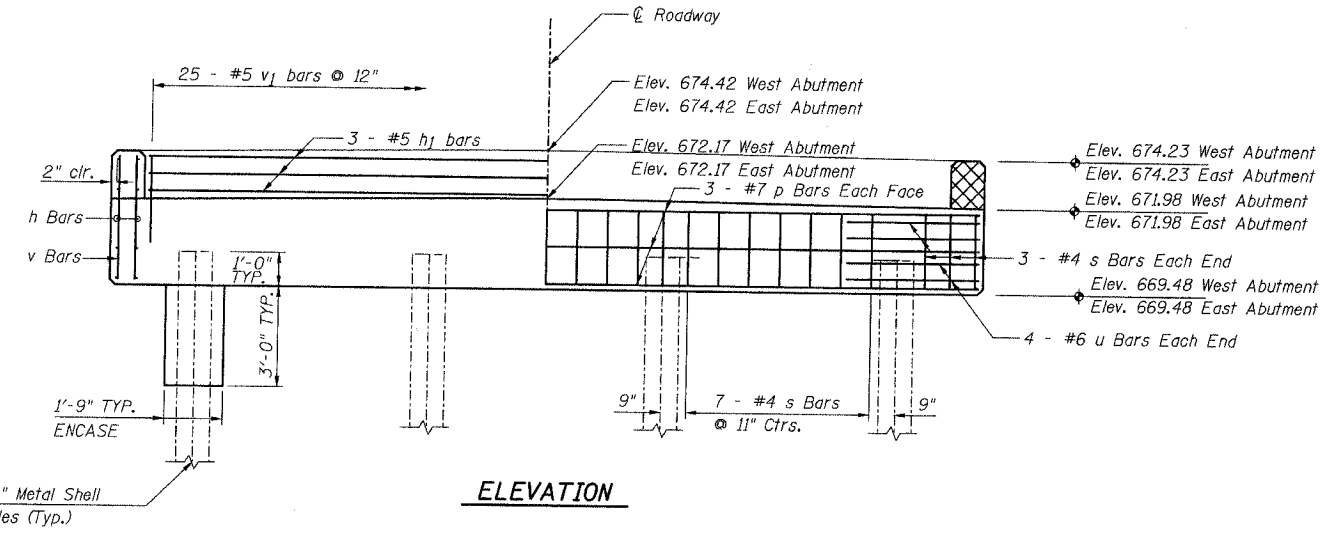
Bar	No.	Size	Length	Shape
h	40	#5	4'-8"	
h1	6	#5	23'-10"	
p	12	#8	25'-10"	
s	54	#4	9'-5"	
u	16	#6	12'-1"	
u1	8	#5	7'-0"	
v	48	#5	3'-11"	
v1	50	#5	4'-5"	

Item	Unit	Qty.
Concrete Structures	Cu.Yd.	18.0
Reinforcement Bars	Lb.	2,290
Furnishing Metal Shells 12"	Ft.	258
Driving and Filling Shells	Ft.	258
Test Pile Metal Shells	Each	2
Structure Excavation	Cu.Yd.	86
Concrete Encasement	Cu.Yd.	2.0

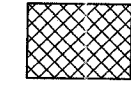
PILE DATA

Type	Metal Shells 12"
No. Required	8*
Capacity	45 Tons
Estimated Length	W. Abutment 45 Ft. E. Abutment 41 Ft.

*Includes one Test Pile at Each Abutment
Metal Shells Shall Be 1/4" Wall Thickness.

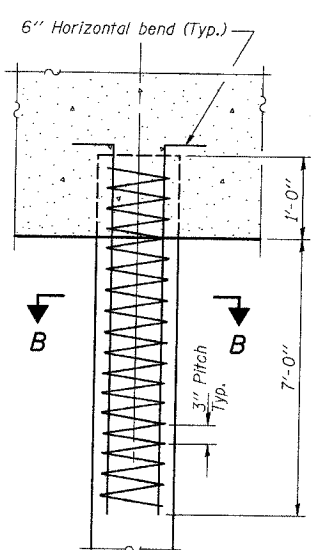


ELEVATION



Shaded Areas to be constructed after Deck Beams have been placed

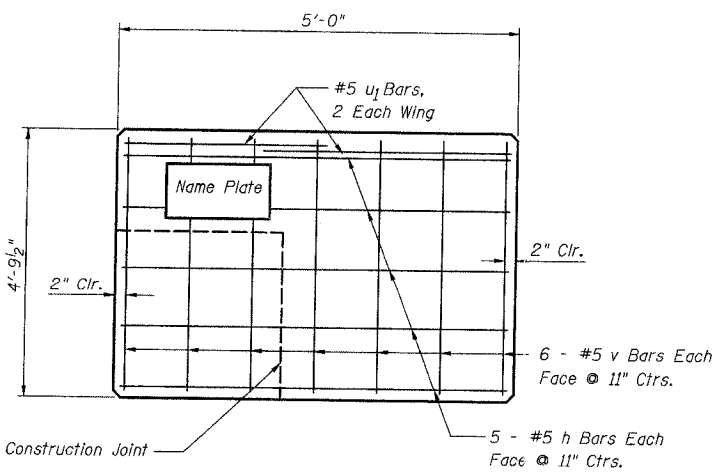
*** Dowel Rods to be grouted after beams are in place and allowed to cure (Min. 24 hrs.) prior to grouting the shear key



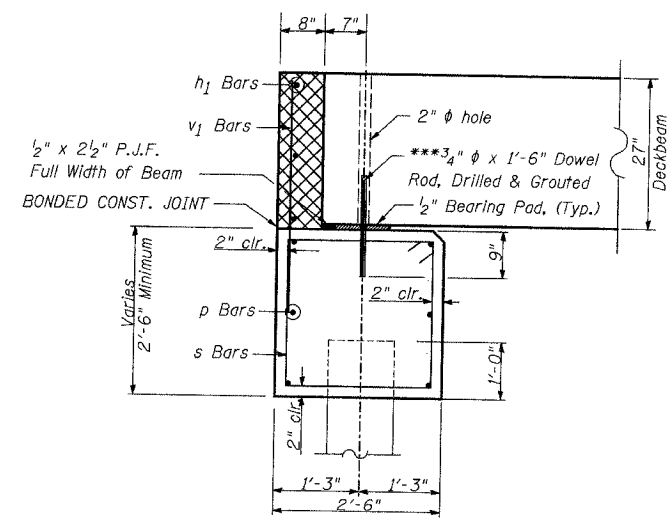
SECTION B-B

The cost of Reinforcement is included with furnishing piles.

DETAIL OF REINFORCEMENT FOR METAL SHELLS AT ABUTMENTS



WINGWALL ELEVATION



SECTION THRU ABUTMENT

REVISIONS	
NAME	DATE

ILLINOIS DEPARTMENT OF TRANSPORTATION
ABUTMENT DETAILS
 TR 183 OVER CLEAR CREEK
 SECTION 99-01120-00-BR
 SHELBY COUNTY STA. 14+95
 STRUCTURE NO. 087-3516

SCALE: N.T.S. DRAWN BY: B.J.F.
 DATE: 04/08/03 CHECKED BY: M.J.S.

ABUTPLN B.J.F. 10-15-01 3/8" = 1'