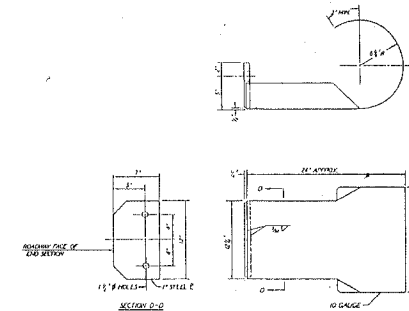


STRIPING SCHEDULE			
NO PASSING ZONES		CENTERLINE	EDGE LINE
SOUTHBOUND	NORTHBOUND		
23+97 to 37+02 52+99 to 61+89 69+56 to 90+66 157+16 to 166+23 190+00 to 198+00	209+00 to 201+00 174+01 to 169+00 104+81 to 97+66 90+66 to 77+77 69+84 to 62+62 48+81 to 35+68 23+97 to 19+11	13+20 to 35+68 37+02 to 77+77 97+66 to 213+79	13+20 to 213+79 PLACE EDGLINES 4" FROM EDGE OF SURFACE AND OMIT AT SIDE ROADS AND STA. 90+66 TO STA. 97+66
TOTAL 6,012'	TOTAL 5,826'	TOTAL 4,484'	TOTAL 38,418
TOTAL 11,838'			

BITUMINOUS CONCRETE SUPERPAVE	
MATERIAL PURPOSE	TONS
RESURFACING	6,926
SIDERoadS, INTERSECTIONS, P.E., F.E.	290
TOTAL	7,216

CONVERSION FACTOR=112 LBS./SQ. YD./INCH

CURLED END SECTION DETAIL



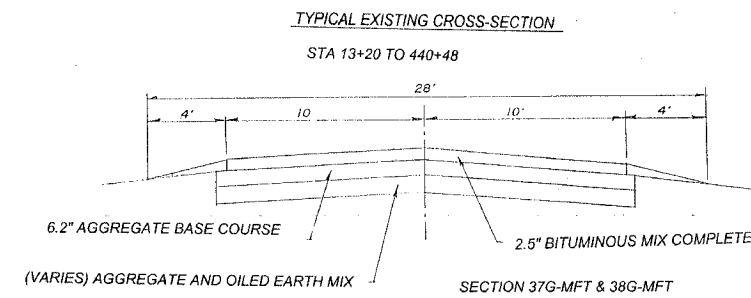
GENERAL NOTES

THIS SECTION SHALL CONSIST OF BITUMINOUS CONCRETE SURFACE COURSE, SUPERPAVE MIX "C" N50, WITH AREA REFLECTIVE CRACK CONTROL TREATMENT, AGGREGATE SHOULDERS, STRIPING, RESURFACING OF DRIVES, FIELD ENTRANCES, ROAD INTERSECTIONS AND MAILBOX TURNOUTS. ALL WORK SHALL BE IN ACCORDANCE WITH THE PLANS, SPECIAL PROVISIONS AND THE STANDARD SPECIFICATIONS FOR ROAD AND BRIDGE CONSTRUCTION ADOPTED JANUARY 1, 2002 BY THE ILLINOIS DEPARTMENT OF TRANSPORTATION, RECURRING SPECIAL PROVISIONS, AND THE SPECIAL PROVISIONS.

THE EXISTING GRADE, ALIGNMENT, DRAINAGE STRUCTURES, BASE AND SURFACE WERE CONSTRUCTED UNDER SECTIONS 37G-MFT AND 38G-MFT.

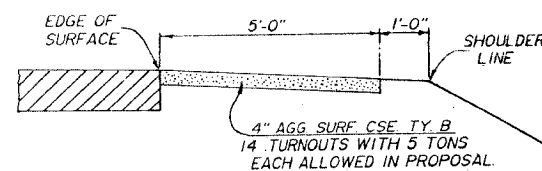
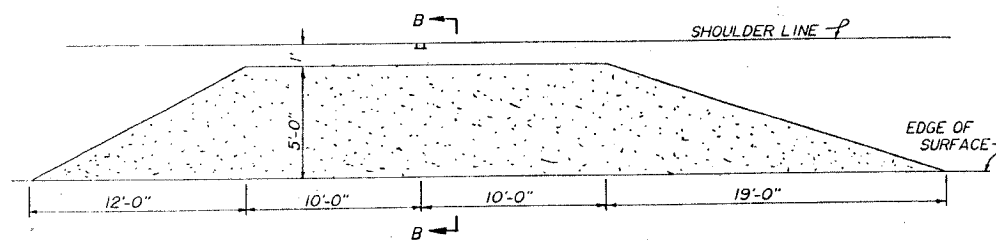
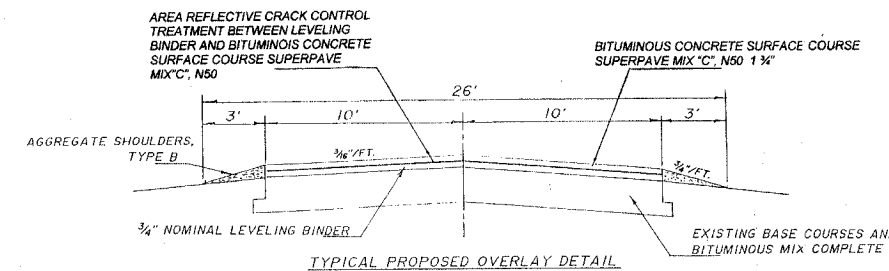
ALL STATIONS REFERRED TO HEREIN ARE IN REFERENCE TO SAID SECTIONS.

CLASS D PATCHING		
TYPE 2-9"	TYPE 3-9"	TYPE 4-9"
70+53 to 70+71 6' WIDE 12.00 SQ. YD. AT CENTERLINE	143+10 to 143+47 5' WIDE 20.55 SQ. YD. S'BOUND LANE	65+38 to 65+76 6' WIDE 25.33 SQ. YD. S'BOUND LANE 67+63 to 68+06 7' WIDE 33.44 SQ. YD. S'BOUND LANE
TOTAL 12.00 SQ. YD.	TOTAL 20.55 SQ. YD.	TOTAL 58.77 SQ. YD.

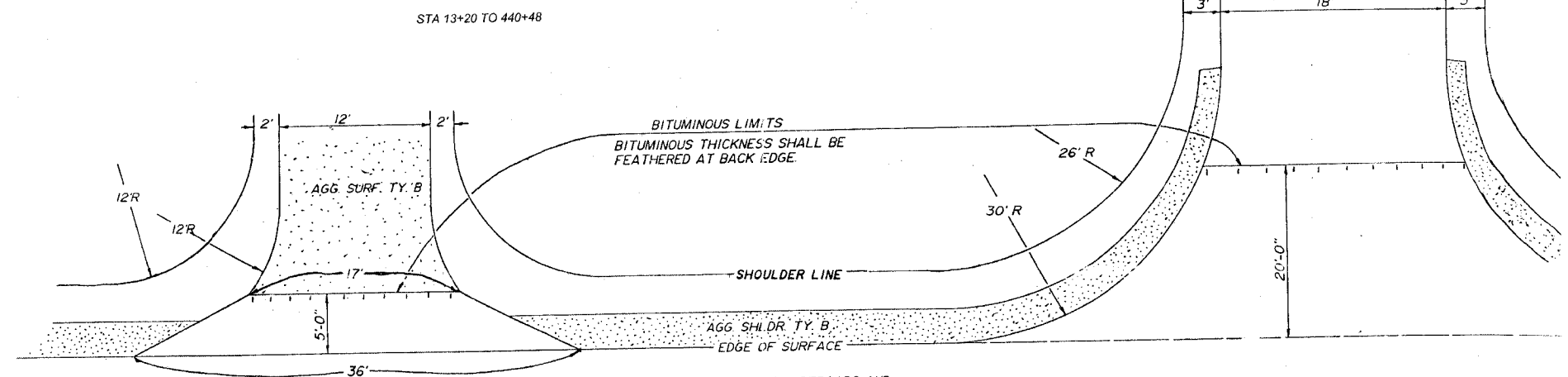


MAXIMUM GRADE=3.5%
MINIMUM S.S.D.=385'
ADT=10 YR. 500
YR. OF IMPROVEMENT DESIGN =2006
P=440 SU=35 MU=6
DESIGN SPEED=50 M.P.H.

SUPERPAVE THICKNESS=2 1/2"
M.S.=1500 MINIMUM
PRIME =0.10 GAL./SQ. YD.



SECTION B-B



DETAIL OF PRIVATE/FIELD ENTRANCE

28 PRIVATE/FIELD ENTRANCES WITH 5 TONS OF BITUMINOUS CONCRETE SURFACE COURSE SUPERPAVE MIX "C", N50 PER ENTRANCE ALLOWED IN THE PROPOSAL

REPAIR ALL SIDERoadS AND ENTRANCES AS REQUIRED BY DIRECTION OF THE ENGINEER. 5 TONS AGGREGATE SURFACE COURSE TYPE B ALLOWED IN THE PROPOSAL.

DETAIL OF SIDE ROAD INTERSECTION 6 EACH

25 TONS OF BITUMINOUS CONCRETE SURFACE COURSE SUPERPAVE MIX "C", N50 ALLOWED IN THE PROPOSAL