

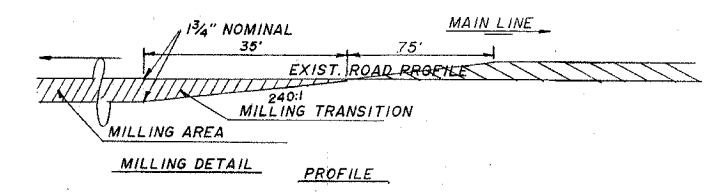
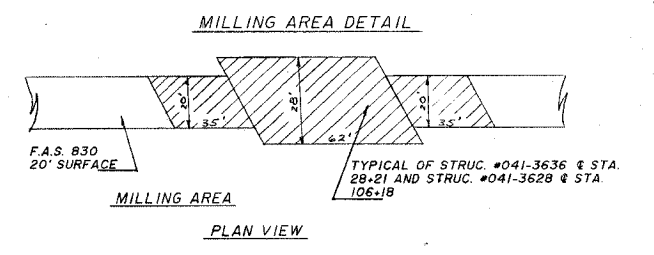
ROUTE	SECTION	COUNTY	TOT. SHTS.	SHT.
FAS 830	03-00181-00-RS	JEFFERSON	2	1
JEFFERSON COUNTY ROAD DISTRICT				

CONTRACT 95475

STATE OF ILLINOIS DEPARTMENT OF TRANSPORTATION

INDEX OF SHEETS

1. COVER SHEET, LOCATION MAP, SCHEDULE OF QUANTITIES
2. GENERAL NOTES, TYPICAL EXISTING AND PROPOSED CROSS-SECTIONS, BITUMINOUS CONCRETE SUPERPAVE BREAKDOWN, STRIPING, DETAILS OF SIDE ROADS, PRIVATE ENTRANCES AND MAILBOX TURNOUTS



PLANS FOR PROPOSED FEDERAL AID SECONDARY PROJECT

F.A.S. 830 C.H. 6 JEFFERSON CO.
SECTION 03-00181-00-RS
PROJECT #RS-830(108)
JOB #C-97-071-06

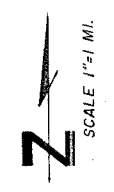
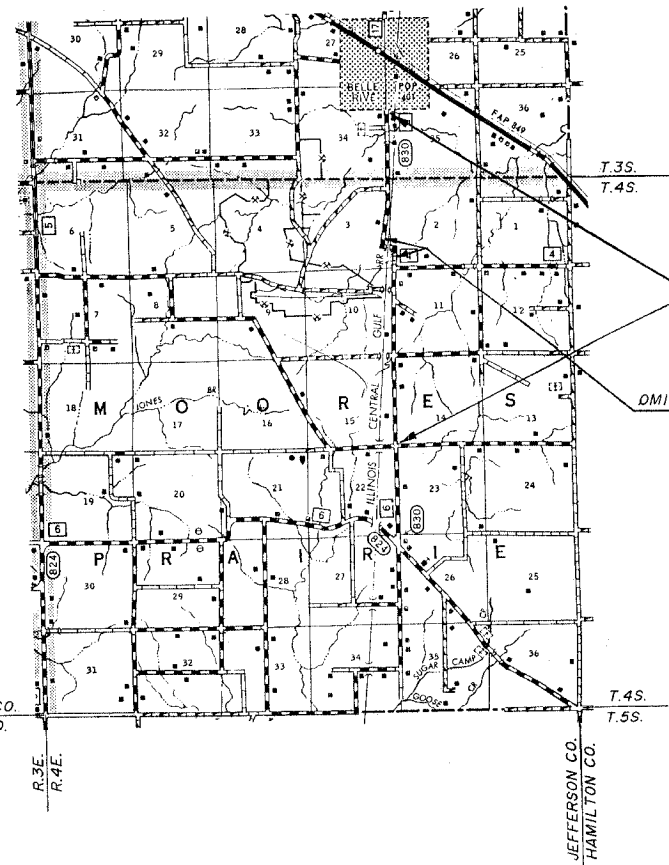
STANDARDS

- 000001-04
- 442201-01
- 630001-06
- 630101-06
- 701006-02
- 701306-01
- 701311-02
- 701336-04
- 702001-06
- 780001-01
- B.L.R. 21-6
- B.L.R. 22-4

SCHEDULE OF QUANTITIES			
Quantity	Unit	Item	Code Number
1936	FOOT	SHORT-TERM PAVEMENT MARKING REMOVAL	XX003140
697	SQ. YD.	COLD MILLING	Z0010700
210	TON	AGGREGATE SURFACE COURSE, TYPE B	40200800
4619	TON	BITUMINOUS CONCRETE SURFACE COURSE, SUPERPAVE, MIX "C", NSO	X4066414
4404	GALLON	BITUMINOUS MATERIALS (PRIME COAT)	40600100
2597	TON	LEVELING BINDER (MACHINE METHOD), SUPERPAVE NSO	X4066765
12	SQ. YD.	CLASS D PATCHES, TYPE III, 9 INCH	44201753
21	SQ. YD.	CLASS D PATCHES, TYPE III, 9 INCH	44201757
59	SQ. YD.	CLASS D PATCHES, TYPE IV, 9 INCH	44201759
1	L. SUM	MOBILIZATION	67100100
43020	SQ. YD.	AREA REFLECTIVE CRACK CONTROL TREATMENT, SYSTEM A	44300300
1258	TON	AGGREGATE SHOULDERS, TYPE B	48101200
50	FOOT	STEEL PLATE BEAM GUARDRAIL, TYPE B	63000605
39	FOOT	STEEL PLATE BEAM GUARDRAIL, ATTACHED TO STRUCTURES	63000625
2	EACH	TRAFFIC BARRIER TERMINAL TYPE 1, SPECIAL (TANGENT)	63100167
1	L. SUM	TRAFFIC CONTROL AND PROTECTION	70100460
3872	FOOT	SHORT-TERM PAVEMENT MARKING	70300100
54740	FOOT	THERMOPLASTIC PAVEMENT MARKING, LINE 4"	78000200
2	EACH	TERMINAL MARKER DIRECT APPLIED	78201000
1	L. SUM	TRAFFIC CONTROL AND PROTECTION STANDARD	70100600

* SPECIALTY ITEMS

GUARDRAIL SCHEDULE	
STEEL PLATE BEAM GUARDRAIL, ATTACHED TO STRUCTURES	STA. 159+64.63 TO 159+83.38 LT. Sta. 159+83.63 TO 160+02.38 RT.
STEEL PLATE BEAM GUARDRAIL, TYPE B	STA. 159+39.63 TO 159+64.63 LT. STA. 160+02.38 TO 160+27.38 RT.
TRAFFIC BARRIER TERMINAL TYPE 1, SPECIAL (TANGENT)	STA. 159+83.38 TO 160+33.38 LT. STA. 159+33.63 TO 159+83.63 RT.



SECTION 03-00181-00-RS
BEGINS STA. 13+20
ENDS STA. 213+79

OMISSION STA. 90+66 TO STA. 97+66

J.U.L.I.E.
JOINT UTILITY LOCATING
INFORMATION FOR EXCAVATION
1-800-892-0123
WWW.ILLINOIS1CALL.COM

FUNCTIONAL CLASSIFICATION
-LOCAL ROAD
DESIGN SPEED=50 M.P.H.
ADT=500

TOTAL SECTION LENGTH=20,059'=3.799 MI.
OMISSION STA. 90+66 TO STA. 97+66=700'
NET SECTION LENGTH=19,359'=3.667 MI.

APPROVED APRIL 3, 2006

John S. Schvane
COUNTY ENGINEER
JEFFERSON COUNTY HIGHWAY DEPT.
750 OLD FAIRFIELD RD.
MT. VERNON, IL 62864
PH. (618)244-8031
LICENSE EXP. 11-30-07

PASSED 4/18/2006

Maura El Kad
DISTRICT SEVEN ENGINEER OF
LOCAL ROADS AND STREETS

Releasing for
limited review 4/18/2006

Christina Reed
DEPUTY DIRECTOR OF HIGHWAYS
REGION FOUR ENGINEER

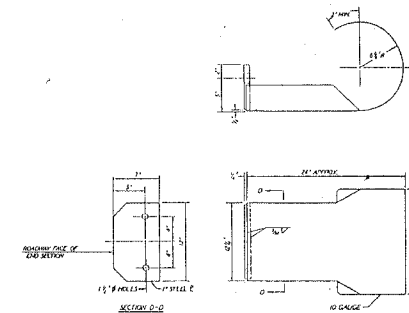
STATE OF ILLINOIS
DEPARTMENT OF TRANSPORTATION

STRIPING SCHEDULE			
NO PASSING ZONES		CENTERLINE	EDGE LINE
SOUTHBOUND	NORTHBOUND		
23+97 to 37+02	209+00 to 201+00	13+20 to 35+68	13+20 to 213+79
52+99 to 61+89	174+01 to 169+00	37+02 to 77+77	PLACE EDGLINES
69+56 to 90+66	104+81 to 97+66	97+66 to 213+79	4" FROM EDGE OF
157+16 to 166+23	90+66 to 77+77		SURFACE AND OMIT
190+00 to 198+00	69+84 to 62+62		AT SIDE ROADS AND
	48+81 to 35+68		STA. 90+66 TO STA.
	23+97 to 19+11		97+66
TOTAL 6,012'	TOTAL 5,826'	TOTAL 4,484'	TOTAL 38,418
TOTAL 11,838'			

BITUMINOUS CONCRETE SUPERPAVE	
MATERIAL PURPOSE	TONS
RESURFACING	6,926
SIDERoadS, INTERSECTIONS, P.E., F.E.	290
TOTAL	7,216

CONVERSION FACTOR=112 LBS./SQ. YD./INCH

CURLED END SECTION DETAIL



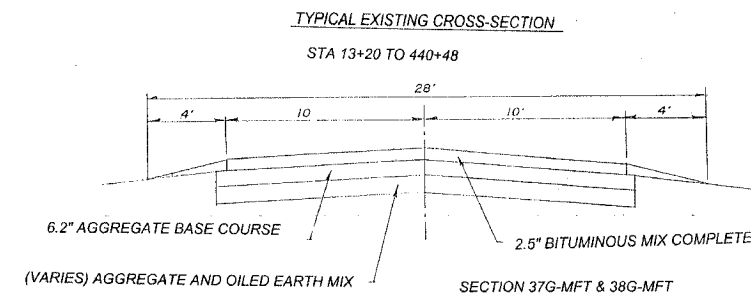
GENERAL NOTES

THIS SECTION SHALL CONSIST OF BITUMINOUS CONCRETE SURFACE COURSE, SUPERPAVE MIX "C" N50, WITH AREA REFLECTIVE CRACK CONTROL TREATMENT, AGGREGATE SHOULDERS, STRIPING, RESURFACING OF DRIVES, FIELD ENTRANCES, ROAD INTERSECTIONS AND MAILBOX TURNOUTS. ALL WORK SHALL BE IN ACCORDANCE WITH THE PLANS, SPECIAL PROVISIONS AND THE STANDARD SPECIFICATIONS FOR ROAD AND BRIDGE CONSTRUCTION ADOPTED JANUARY 1, 2002 BY THE ILLINOIS DEPARTMENT OF TRANSPORTATION, RECURRING SPECIAL PROVISIONS, AND THE SPECIAL PROVISIONS.

THE EXISTING GRADE, ALIGNMENT, DRAINAGE STRUCTURES, BASE AND SURFACE WERE CONSTRUCTED UNDER SECTIONS 37G-MFT AND 38G-MFT.

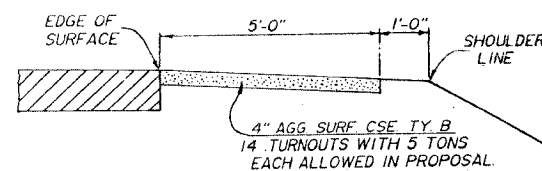
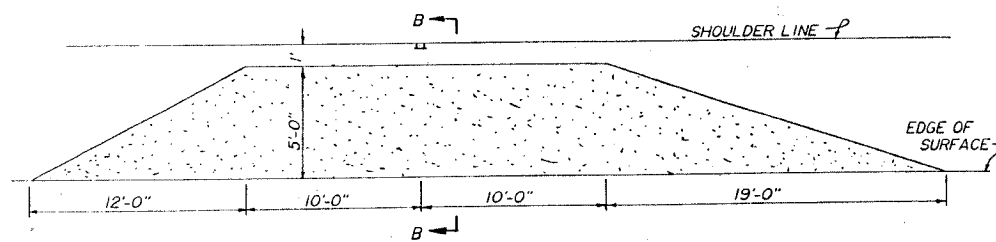
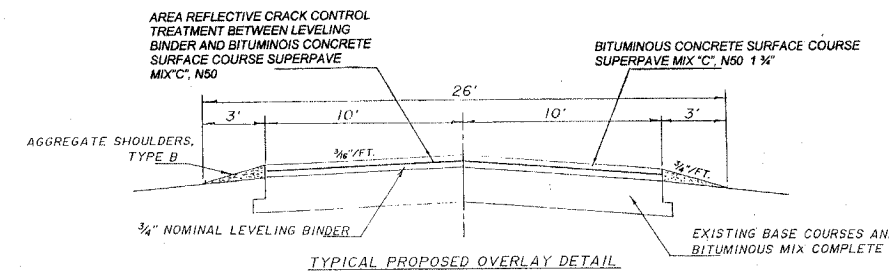
ALL STATIONS REFERRED TO HEREIN ARE IN REFERENCE TO SAID SECTIONS.

CLASS D PATCHING		
TYPE 2-9"	TYPE 3-9"	TYPE 4-9"
70+53 to 70+71 6' WIDE 12.00 SQ. YD. AT CENTERLINE	143+10 to 143+47 5' WIDE 20.55 SQ. YD. S'BOUND LANE	65+38 to 65+76 6' WIDE 25.33 SQ. YD. S'BOUND LANE
		67+63 to 68+06 7' WIDE 33.44 SQ. YD. S'BOUND LANE
TOTAL 12.00 SQ. YD.	TOTAL 20.55 SQ. YD.	TOTAL 58.77 SQ. YD.

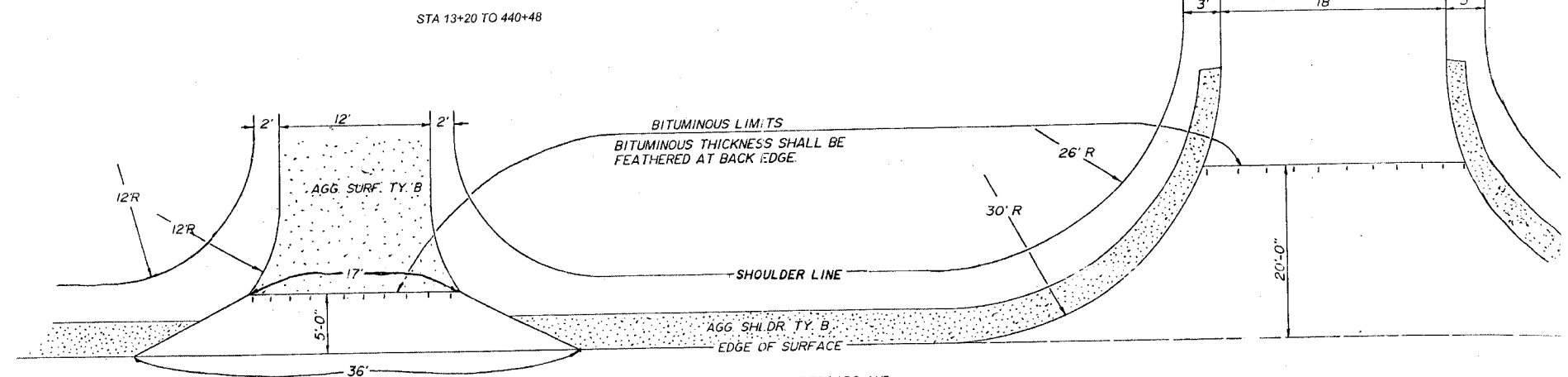


MAXIMUM GRADE=3.5%
MINIMUM S.S.D.=385'
ADT=10 YR. 500
YR. OF IMPROVEMENT DESIGN =2006
P=440 SU=35 MU=6
DESIGN SPEED=50 M.P.H.

SUPERPAVE THICKNESS=2 1/2"
M.S.=1500 MINIMUM
PRIME =0.10 GAL./SQ. YD.



SECTION B-B



DETAIL OF PRIVATE/FIELD ENTRANCE

28 PRIVATE/FIELD ENTRANCES WITH 5 TONS OF BITUMINOUS CONCRETE SURFACE COURSE SUPERPAVE MIX "C", N50 PER ENTRANCE ALLOWED IN THE PROPOSAL

REPAIR ALL SIDERoadS AND ENTRANCES AS REQUIRED BY DIRECTION OF THE ENGINEER. 5 TONS AGGREGATE SURFACE COURSE TYPE B ALLOWED IN THE PROPOSAL.

DETAIL OF SIDE ROAD INTERSECTION 6 EACH

25 TONS OF BITUMINOUS CONCRETE SURFACE COURSE SUPERPAVE MIX "C", N50 ALLOWED IN THE PROPOSAL