

**'THOUVENOT,
WADE &
MOERCHEN, INC.**
ENGINEERS • SURVEYORS • PLANNERS



CORPORATE OFFICE

4940 OLD COLLINSVILLE RD.
SWANSEA, ILLINOIS 62226
TEL (618) 624-4488
FAX (618) 624-6688
corp@twm-inc.com

WATERLOO OFFICE

113 SOUTH MAIN STREET
WATERLOO, ILLINOIS 62298
TEL (618) 939-5050
FAX (618) 939-3938
waterloo@twm-inc.com

ST. LOUIS OFFICE

1001 CRAIG ROAD, SUITE 260
ST. LOUIS, MISSOURI 63146
TEL (314) 236-5052
FAX (314) 872-2194
stlouis@twm-inc.com

PROFESSIONAL REGISTRATIONS	LICENSE NO.
ILLINOIS PROFESSIONAL DESIGN FIRM	184-00020
PROFESSIONAL ENGINEERING CORP.	62-005370
PROFESSIONAL STRUCTURAL ENGR. CORP.	18-005202
ILLINOIS PROF. LAND SURVEYING CORP.	048-000029
MISSOURI PROFESSIONAL ENGR. CORP.	18-000528
MISSOURI LAND SURVEYING CORP.	18-000246

SEAL

Revised Date: _____
Signature Date: _____

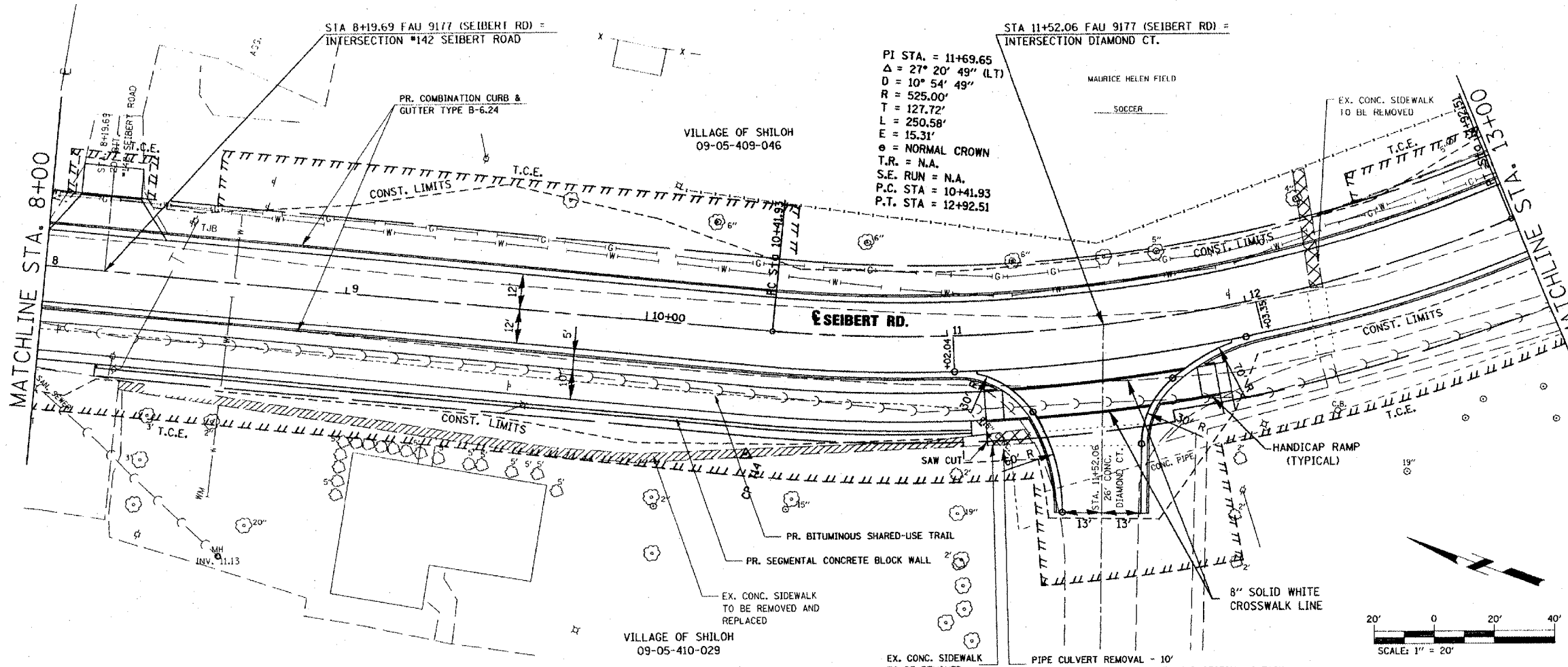
STATEMENT OF RESPONSIBILITY
I hereby certify that the document herein to be authenticated by my seal is restricted to this owner, and I hereby disclaim any responsibility for all other drawings, specifications, estimates, reports or other documents or instruments relating to or intended to be utilized for any other part of the architectural, engineering or survey project.

ROADWAY PLAN AND PROFILE
PROJECT:
**SEIBERT RD. RECONSTRUCTION
PHASE I
VILLAGE OF SHILOH
ST. CLAIR COUNTY, ILLINOIS**

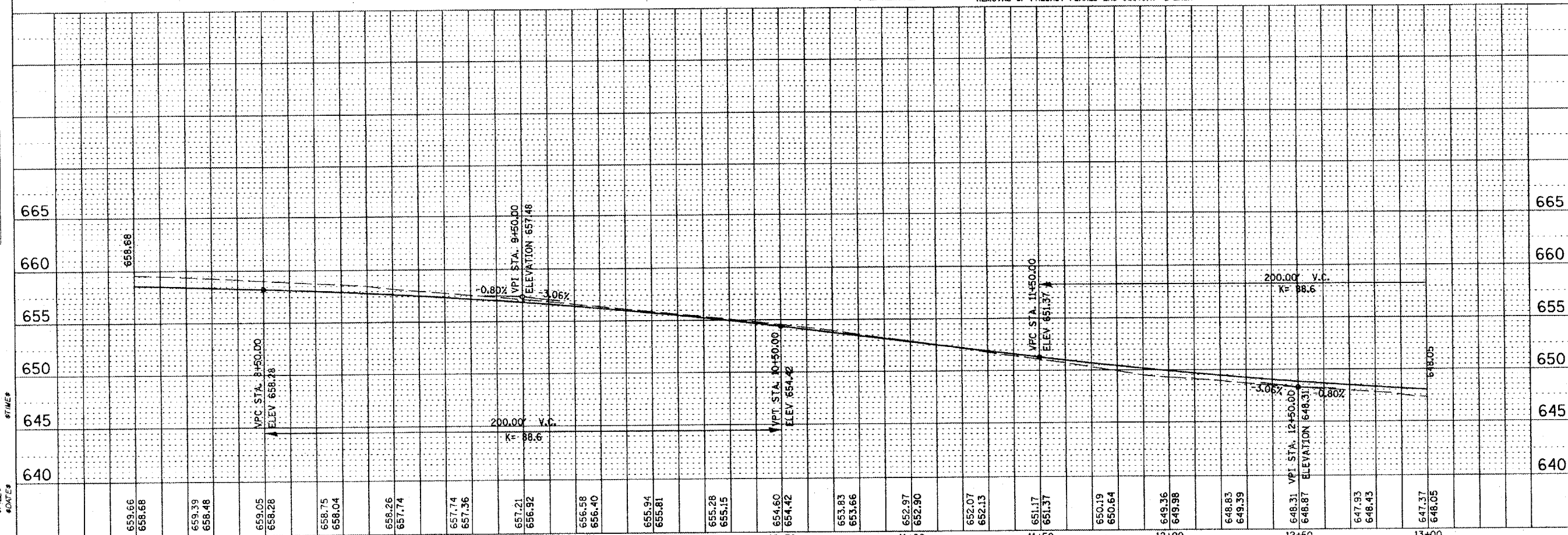
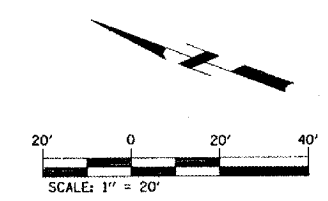
REV.	DATE	DESCRIPTION
1	11/11	
2	11/11	

DRAWN BY:	SHEET 13 OF 40 SHEETS
DESIGNED BY:	
CHECKED BY:	
APPROVED BY:	
PROJECT NUMBER:	

ISSUED FOR REVIEW ISSUED FOR BIDDING
 ISSUED FOR CONSTR. RECORD DRAWING



PI STA. = 11+69.65
 $\Delta = 27^\circ 20' 49''$ (LT)
 $D = 10^\circ 54' 49''$
 $R = 525.00'$
 $T = 127.72'$
 $L = 250.58'$
 $E = 15.31'$
 $\theta = \text{NORMAL CROWN}$
 $T.R. = \text{N.A.}$
 $S.E. \text{ RUN} = \text{N.A.}$
 $P.C. \text{ STA} = 10+41.93$
 $P.T. \text{ STA} = 12+92.51$



DATE	BY	NO.

DATE	BY	NO.

FILES
NOTES