

CONTRACT NO. 97263

**THOUVENOT,  
WADE &  
MOERCHEN, INC.**  
ENGINEERS • SURVEYORS • PLANNERS



**CORPORATE OFFICE**  
4940 OLD COLLINSVILLE RD.  
SWANSEA, ILLINOIS 62226  
TEL (618) 624-4488  
FAX (618) 624-6688  
corp@twm-inc.com

**WATERLOO OFFICE**  
118 EAST THIRD STREET  
WATERLOO, ILLINOIS 62298  
TEL (618) 939-5050  
FAX (618) 939-3938  
waterloo@twm-inc.com

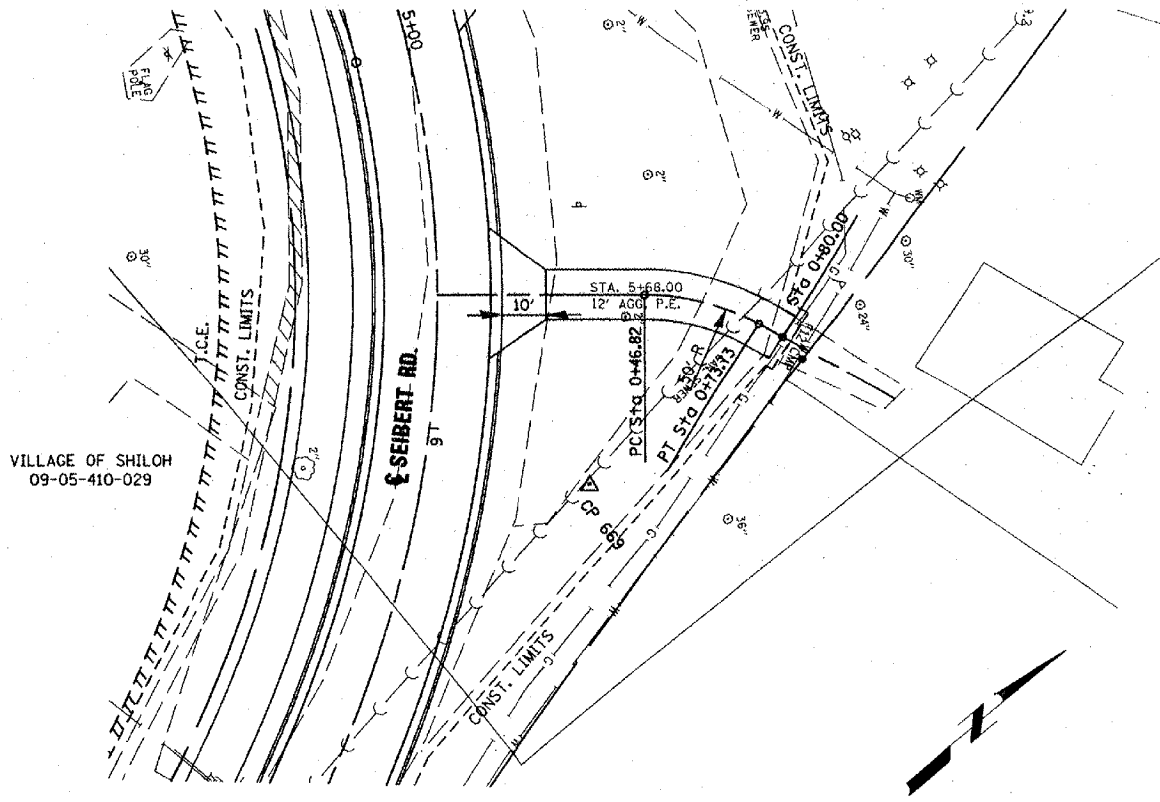
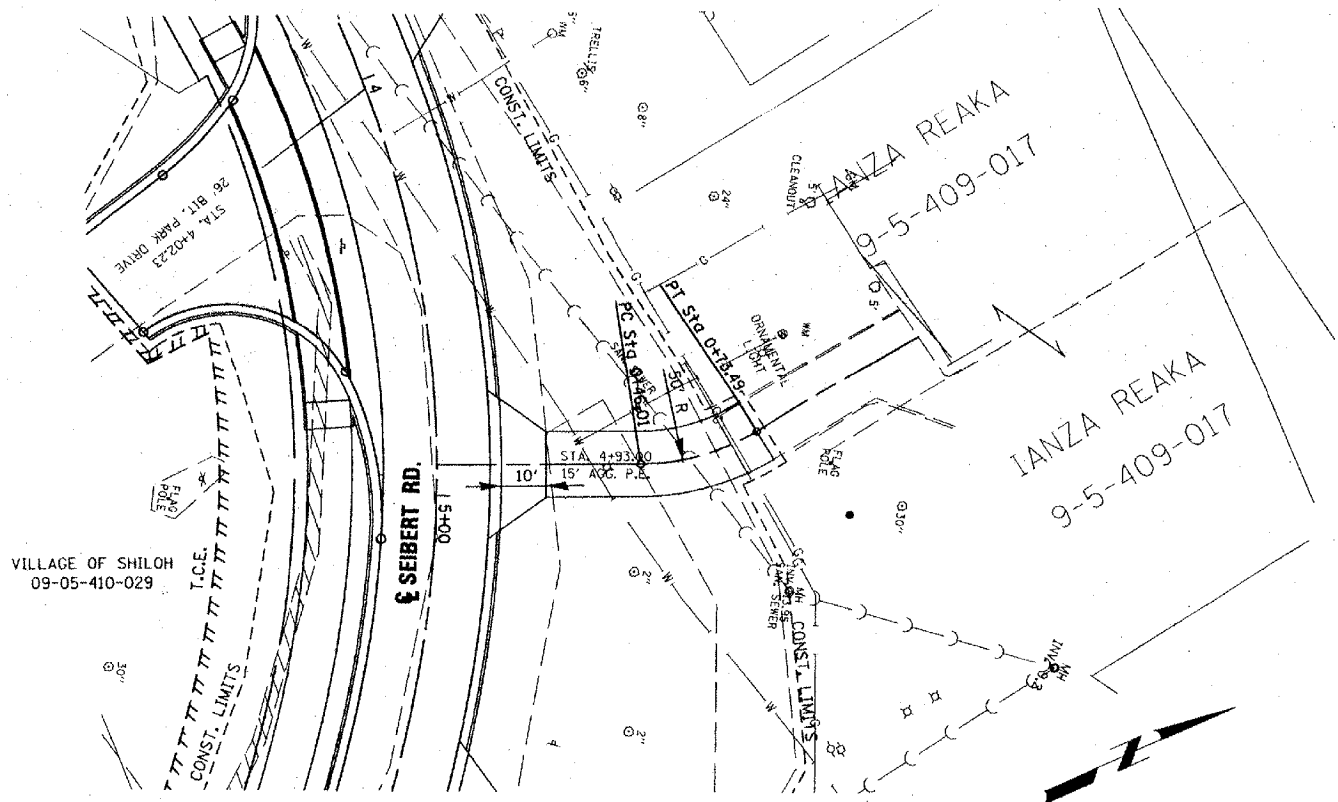
**ST. LOUIS OFFICE**  
1001 CRAIG ROAD, SUITE 260  
ST. LOUIS, MISSOURI 63146  
TEL (314) 236-5052  
FAX (314) 872-2194  
stlouis@twm-inc.com

PROFESSIONAL REGISTRATIONS	LICENSE NO.
ILLINOIS PROFESSIONAL DESIGN FIRM	184-04220
PROFESSIONAL ENGINEERING CORP.	62-085310
PROFESSIONAL STRUCTURAL ENGR. CORP.	81-005202
ILLINOIS PROF. LAND SURVEYING CORP.	048-000029
MISSOURI PROFESSIONAL ENGR. CORP.	MC 00528
MISSOURI LAND SURVEYING CORP.	MC 000346

STATEMENT OF RESPONSIBILITY  
I hereby certify that the document herein to be authorized by my seal is restricted to this sheet, and I hereby disclaim any responsibility for all other drawings, specifications, estimates, reports or other documents or instruments relating to or intended to be utilized for any other part of the architectural, engineering or survey project.

PRIVATE ENTRANCE  
STA. 4+93.00

PRIVATE ENTRANCE  
STA. 5+68.00



PLAN	DATE	BY
SURVEYED		
PLANNED		
CHECKED		
DATE		

PROF. I.E.	DATE	BY
SURVEYED		
PLANNED		
CHECKED		
DATE		

STATION	ELEVATION	REMARKS	STATION	ELEVATION	REMARKS
665			665		
660			660		
655			655		
650			650		
645			645		
640			640		
665		VPI STA. 0+414.58 ELEVATION 661.25	665		
660		VPI STA. 0+421.88 ELEVATION 661.39	660		
655		VPI STA. 0+434.99 ELEVATION 663.18	655		
650			650		
645			645		
640			640		
665			665		
660			660		
655			655		
650			650		
645			645		
640			640		
665			665		
660			660		
655			655		
650			650		
645			645		
640			640		
665			665		
660			660		
655			655		
650			650		
645			645		
640			640		
665			665		
660			660		
655			655		
650			650		
645			645		
640			640		
665			665		
660			660		
655			655		
650			650		
645			645		
640			640		
665			665		
660			660		
655			655		
650			650		
645			645		
640			640		
665			665		
660			660		
655			655		
650			650		
645			645		
640			640		
665			665		
660			660		
655			655		
650			650		
645			645		
640			640		
665			665		
660			660		
655			655		
650			650		
645			645		
640			640		
665			665		
660			660		
655			655		
650			650		
645			645		
640			640		
665			665		
660			660		
655			655		
650			650		
645			645		
640			640		
665			665		
660			660		
655			655		
650			650		
645			645		
640			640		
665			665		
660			660		
655			655		
650			650		
645			645		
640			640		
665			665		
660			660		
655			655		
650			650		
645			645		
640			640		
665			665		
660			660		
655			655		
650			650		
645			645		
640			640		
665			665		
660			660		
655			655		
650			650		
645			645		
640			640		
665			665		
660			660		
655			655		
650			650		
645			645		
640			640		
665			665		
660			660		
655			655		
650			650		
645			645		
640			640		
665			665		
660			660		
655			655		
650			650		
645			645		
640			640		
665			665		
660			660		
655			655		
650			650		
645			645		
640			640		
665			665		
660			660		
655			655		
650			650		
645			645		
640			640		
665			665		
660			660		
655			655		
650			650		
645			645		
640			640		
665			665		
660			660		
655			655		
650			650		
645			645		
640			640		
665			665		
660			660		
655			655		
650			650		
645			645		
640			640		
665			665		
660			660		
655			655		
650			650		
645			645		
640			640		
665			665		
660			660		
655			655		
650			650		
645			645		
640			640		
665			665		
660			660		
655			655		
650			650		
645			645		
640			640		
665			665		
660			660		
655			655		
650			650		
645			645		
640			640		
665			665		
660			660		
655			655		
650			650		
645			645		
640			640		
665			665		
660			660		
655			655		
650			650		
645			645		
640			640		
665			665		
660			660		
655			655		
650			650		
645			645		
640			640		
665			665		
660			660		
655			655		
650			650		
645			645		
640			640		
665			665		
660			660		
655			655		
650			650		
645			645		
640			640		
665			665		
660			660		
655			655		
650			650		
645			645		
640			640		
665			665		
660			660		
655			655		
650			650		
645			645		
640			640		
665			665		
660			660		
655			655		
650			650		
645			645		
640			640		
665			665		
660			660		
655			655		
650			650		
645			645		
640			640		
665			665		