

**THOUVENOT,
WADE &
MOERCHEN, INC.**
ENGINEERS • SURVEYORS • PLANNERS



- CORPORATE OFFICE**
4940 OLD COLLINSVILLE RD.
SWANSEA, ILLINOIS 62226
TEL. (618) 624-4488
FAX (618) 624-6688
corp@twm-inc.com
- WATERLOO OFFICE**
118 EAST THIRD STREET
WATERLOO, ILLINOIS 62298
TEL. (618) 939-5050
FAX (618) 939-3938
waterloo@twm-inc.com
- ST. LOUIS OFFICE**
1001 CRAIG ROAD, SUITE 260
ST. LOUIS, MISSOURI 63146
TEL. (314) 236-5052
FAX (314) 872-2194
stlouis@twm-inc.com

PROFESSIONAL REGISTRATIONS	LICENSE NO.
ILLINOIS PROFESSIONAL DESIGN FIRM	184-00220
PROFESSIONAL ENGINEERING CORP.	62-05370
PROFESSIONAL STRUCTURAL ENGR. CORP.	81-08500
ILLINOIS PROF. LAND SURVEYING CORP.	040-00029
MISSOURI PROFESSIONAL ENGR. CORP.	MC 001528
MISSOURI LAND SURVEYING CORP.	MC 000346

SEAL

Revised Date: _____
Signature Date: _____

STATEMENT OF RESPONSIBILITY
I hereby certify that the document herein to be authenticated by my seal is restricted to this sheet, and I hereby disclaim any responsibility for all other drawings, specifications, estimates, reports or other documents or instruments relating to or intended to be utilized for any other part of the architectural, engineering or survey project.

RIGHT-OF-WAY SHEETS

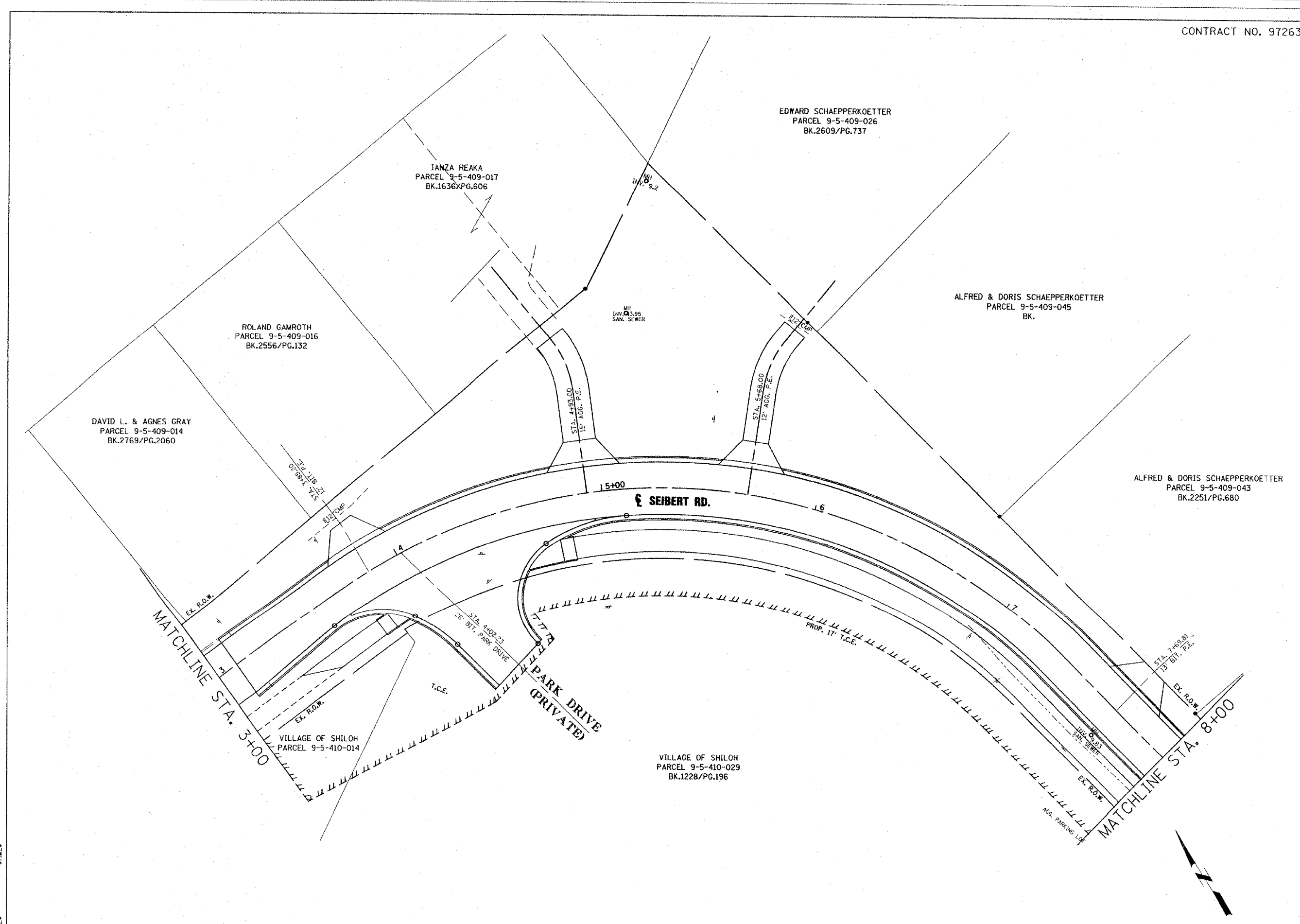
SEIBERT RD. ROADWAY ALIGNMENT
VILLAGE OF SHILOH
ST. CLAIR COUNTY, ILLINOIS

REV.	DATE	DESCRIPTION
△	/ /	
△	/ /	

DRAWN BY: _____	SKR	SHEET
DESIGNED BY: _____		18
CHECKED BY: _____		
APPROVED BY: _____		
PROJECT NUMBER: T0901479		
<input checked="" type="checkbox"/> ISSUED FOR REVIEW <input type="checkbox"/> ISSUED FOR BIDDING <input type="checkbox"/> ISSUED FOR CONSTR. <input type="checkbox"/> RECORD DRAWING		OF 40 SHEETS

PLAN	DATE	BY
REVISION		
PLOTTED		
FILED		
NOTE BOOK		
NO.		

PROFILE	DATE	BY
REVISION		
PLOTTED		
FILED		
NOTE BOOK		
NO.		



STINES
SCATES