

CONTRACT NO. 97263

**THOUVENOT,  
WADE &  
MOERCHEN, INC.**  
ENGINEERS • SURVEYORS • PLANNERS



- CORPORATE OFFICE**  
4940 OLD COLLINSVILLE RD.  
SWANSEA, ILLINOIS 62226  
TEL (618) 624-4488  
FAX (618) 624-6688  
corp@twm-inc.com
- WATERLOO OFFICE**  
118 EAST THIRD STREET  
WATERLOO, ILLINOIS 62298  
TEL (618) 939-5050  
FAX (618) 939-3938  
waterlootwm-inc.com
- ST. LOUIS OFFICE**  
1001 CRAIG ROAD, SUITE 260  
ST. LOUIS, MISSOURI 63146  
TEL (314) 236-5052  
FAX (314) 872-2154  
stlouis@twm-inc.com

PROFESSIONAL REGISTRATION	LICENSE NO.
ILLINOIS PROFESSIONAL DESIGN FIRM	184-00220
PROFESSIONAL ENGINEERING CORP.	62-03570
PROFESSIONAL STRUCTURAL ENGR. CORP.	01-005502
ILLINOIS PROF. LAND SURVEYING CORP.	048-000029
MISSOURI PROFESSIONAL ENGR. CORP.	NC 00528
MISSOURI LAND SURVEYING CORP.	MC 00046

SEAL

Renewed Date: \_\_\_\_\_  
Signature Date: \_\_\_\_\_

**STATEMENT OF RESPONSIBILITY**  
I hereby certify that the document herein to be authorized by my seal is restricted to the sheet, and I hereby disclaim any responsibility for all other drawings, specifications, estimates, reports or other documents or instruments relating to or intended to be utilized for any other part of the architectural, engineering or survey project.

RIGHT-OF-WAY SHEETS

SEIBERT RD. ROADWAY ALIGNMENT  
VILLAGE OF SHILOH  
ST. CLAIR COUNTY, ILLINOIS

REV.	DATE	DESCRIPTION
△	///	
△	///	

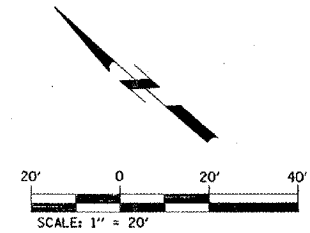
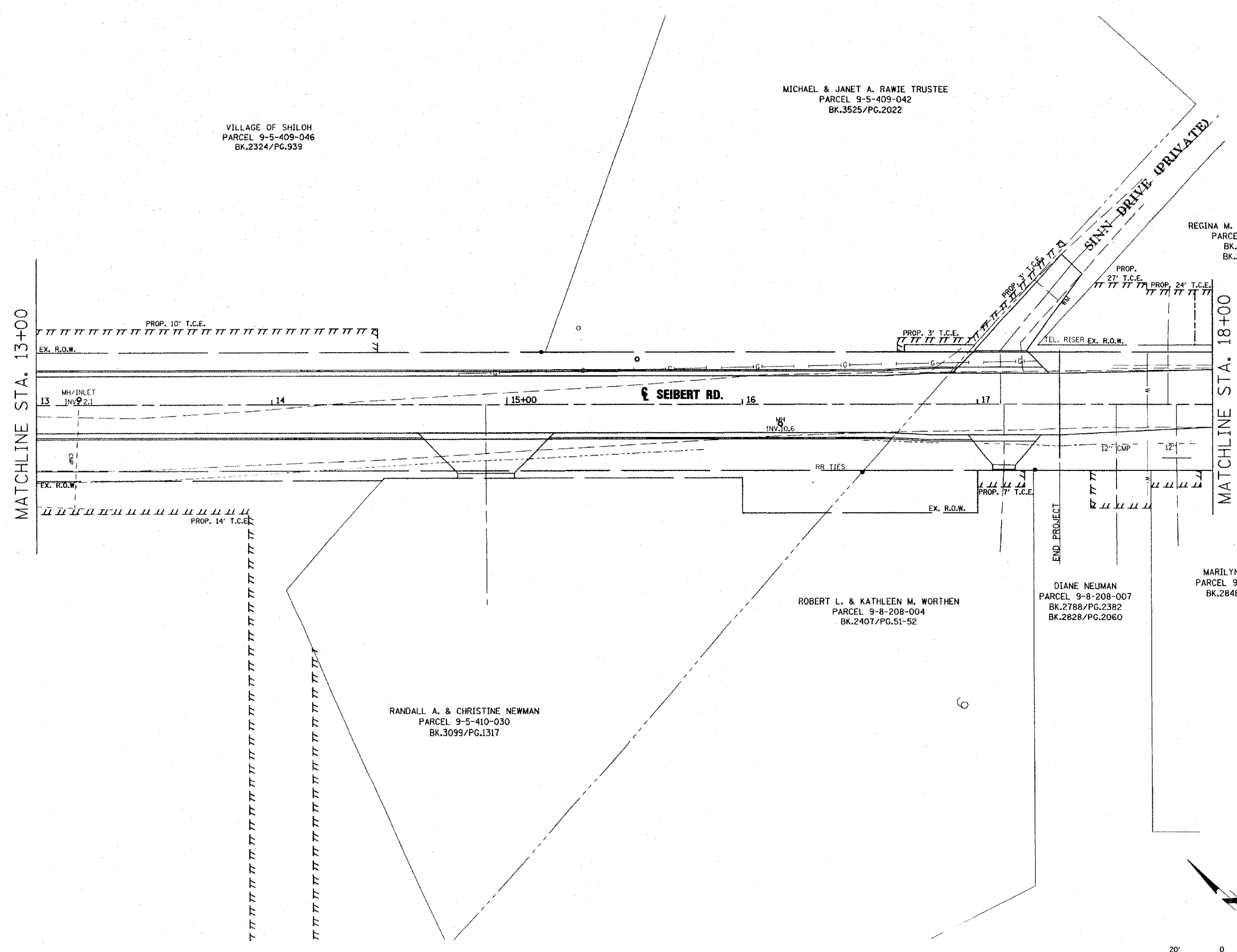
DRAWN BY: _____	SGK	SHEET
DESIGNED BY: _____		20
CHECKED BY: _____		
APPROVED BY: _____		
PROJECT NUMBER: T90010479		
<input checked="" type="checkbox"/> ISSUED FOR REVIEW <input type="checkbox"/> ISSUED FOR BIDDING <input type="checkbox"/> ISSUED FOR CONSTR. <input type="checkbox"/> RECORD DRAWING		OF 40 SHEETS

DATE	BY

SURVEYED  
 PLAN  
 NOTE BOOK  
 ALIGNMENT CHECKED  
 PLOTTING FILE NAME

DATE	BY

PROFILE  
 SURVEYED  
 NOTE BOOK  
 PLOTTING FILE NAME



#FILES  
#DATES