

**THOUVENOT, WADE & MOERCHEN, INC.**  
ENGINEERS-SURVEYORS-PLANNERS



- CORPORATE OFFICE**  
4940 OLD COLLINSVILLE RD.  
SWANSEA, ILLINOIS 62226  
TEL (618) 624-4488  
FAX (618) 624-6688  
corp@twm-inc.com
- WATERLOO OFFICE**  
113 SOUTH MAIN STREET  
WATERLOO, ILLINOIS 62298  
TEL (618) 939-5050  
FAX (618) 939-3938  
waterloo@twm-inc.com
- ST. LOUIS OFFICE**  
1001 CRAIG ROAD, SUITE 260  
ST. LOUIS, MISSOURI 63146  
TEL (314) 236-5052  
FAX (314) 872-2194  
stlouis@twm-inc.com

PROFESSIONAL REGISTRATIONS	LICENSE NO.
ILLINOIS PROFESSIONAL DESIGN FIRM	184-00220
PROFESSIONAL ENGINEERING CORP.	62-03370
PROFESSIONAL STRUCTURAL ENGR. CORP.	81-005202
ILLINOIS PROF. LAND SURVEYING CORP.	048-000029
MISSOURI PROFESSIONAL ENGR. CORP.	NC 00528
MISSOURI LAND SURVEYING CORP.	NC 00346

SEAL

Renewed Date: \_\_\_\_\_  
Signature Date: \_\_\_\_\_

**STATEMENT OF RESPONSIBILITY**  
I hereby confirm that the document herein to be authorized by my seal is restricted to the sheet, and I hereby disclaim any responsibility for all other drawings, specifications, estimates, reports or other documents or instruments relating to or intended to be utilized for any other part of the architectural, engineering or survey project.

**PROPOSED DRAINAGE**

PROJECT: SEIBERT RD. RECONSTRUCTION PHASE I  
VILLAGE OF SHILOH  
ST. CLAIR COUNTY, ILLINOIS

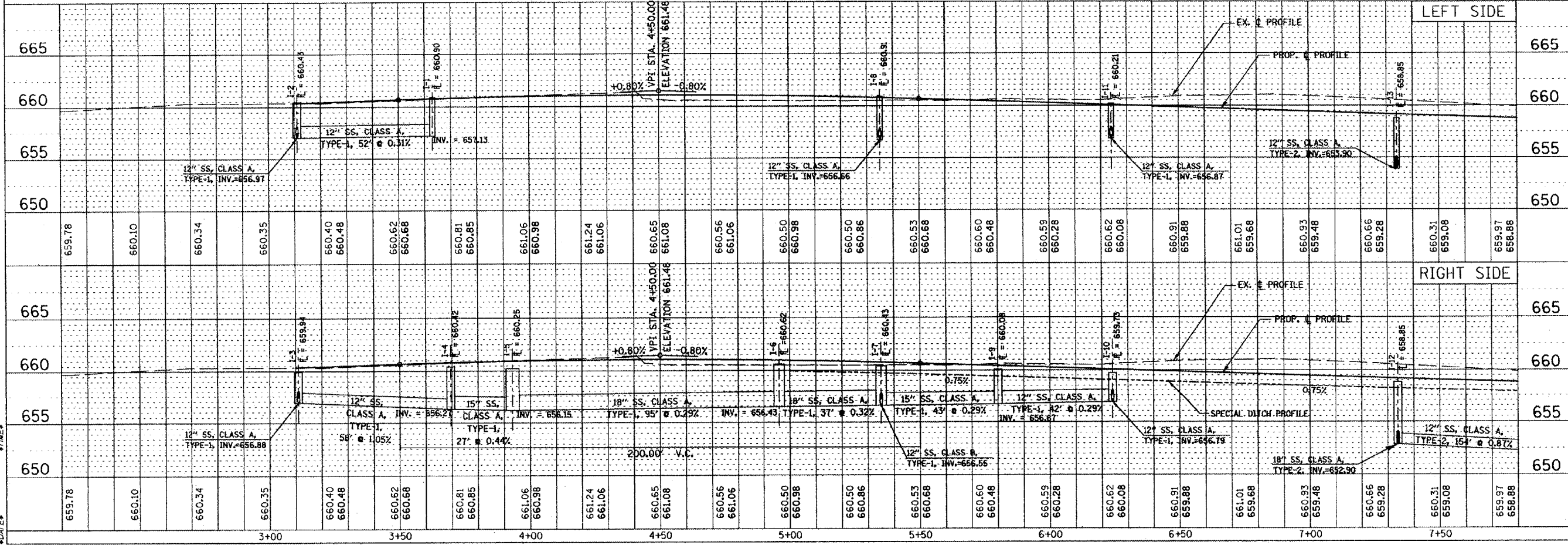
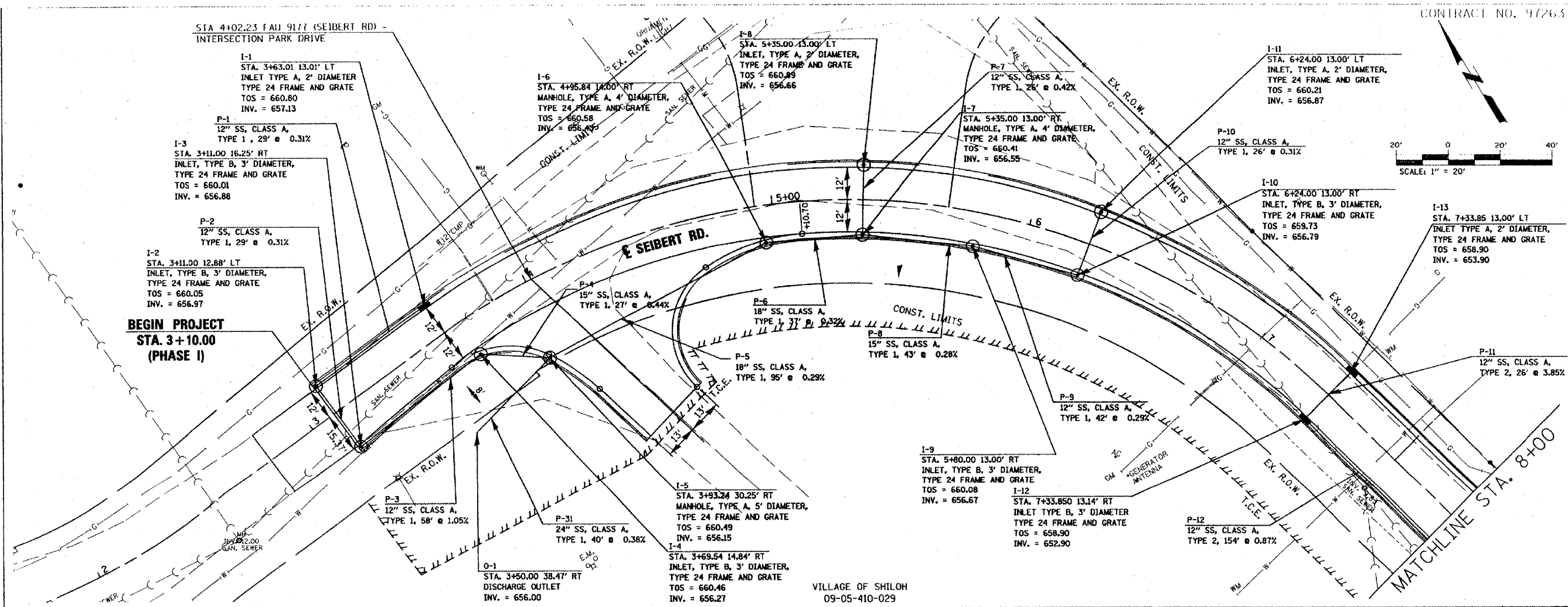
REV.	DATE	DESCRIPTION
1	11/11	
2	11/11	

DRAWN BY:	DESIGNED BY:	CHECKED BY:	APPROVED BY:

PROJECT NUMBER: \_\_\_\_\_ OF 40 SHEETS

ISSUED FOR REVIEW     ISSUED FOR BIDDING  
 ISSUED FOR CONSTR.     RECORD DRAWING



PLAN	DATE
BY: _____	DATE: _____
CHECKED BY: _____	
DATE: _____	

PROFILE	DATE
BY: _____	DATE: _____
CHECKED BY: _____	
DATE: _____	

FILE # \_\_\_\_\_  
DATE # \_\_\_\_\_