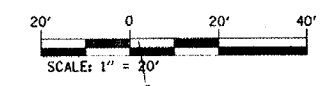
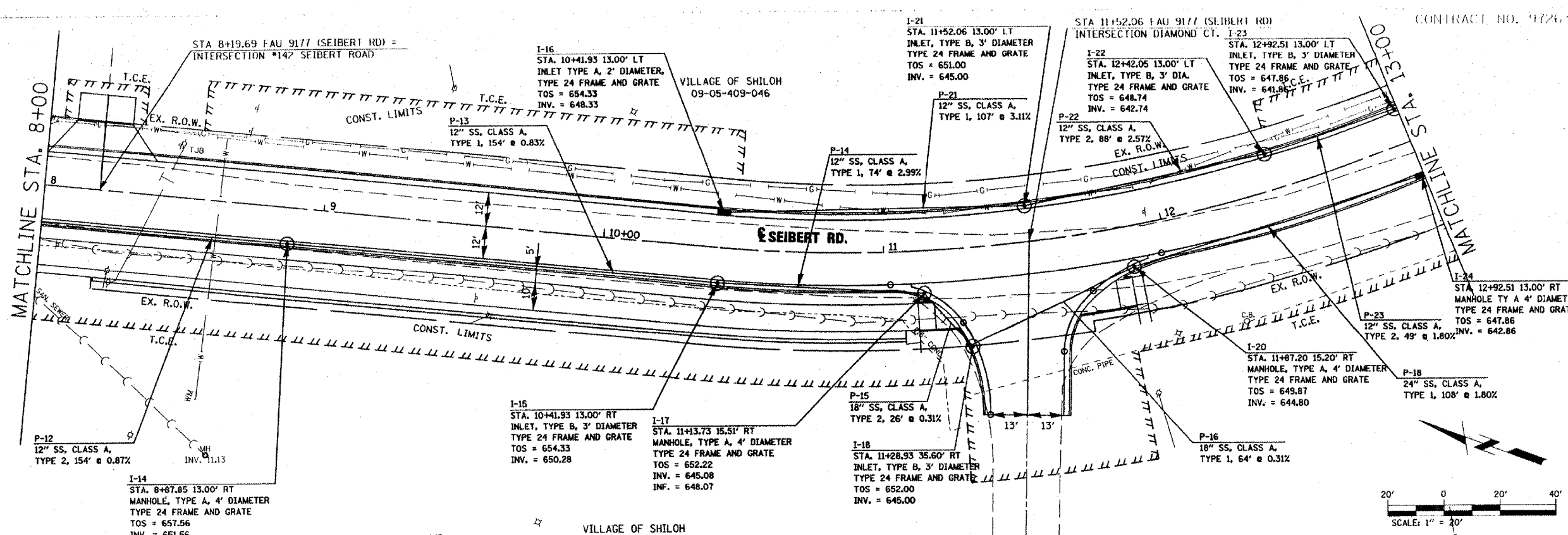


DATE	
BY	
PLAN	
REVISION	
NO.	
DATE	
BY	
PLAN	
REVISION	
NO.	
DATE	
BY	
PLAN	
REVISION	
NO.	

DATE	
BY	
PROFILE	
REVISION	
NO.	
DATE	
BY	
PROFILE	
REVISION	
NO.	



THOUVENOT, WADE & MOERCHEN, INC.
ENGINEERS • SURVEYORS • PLANNERS

TWM

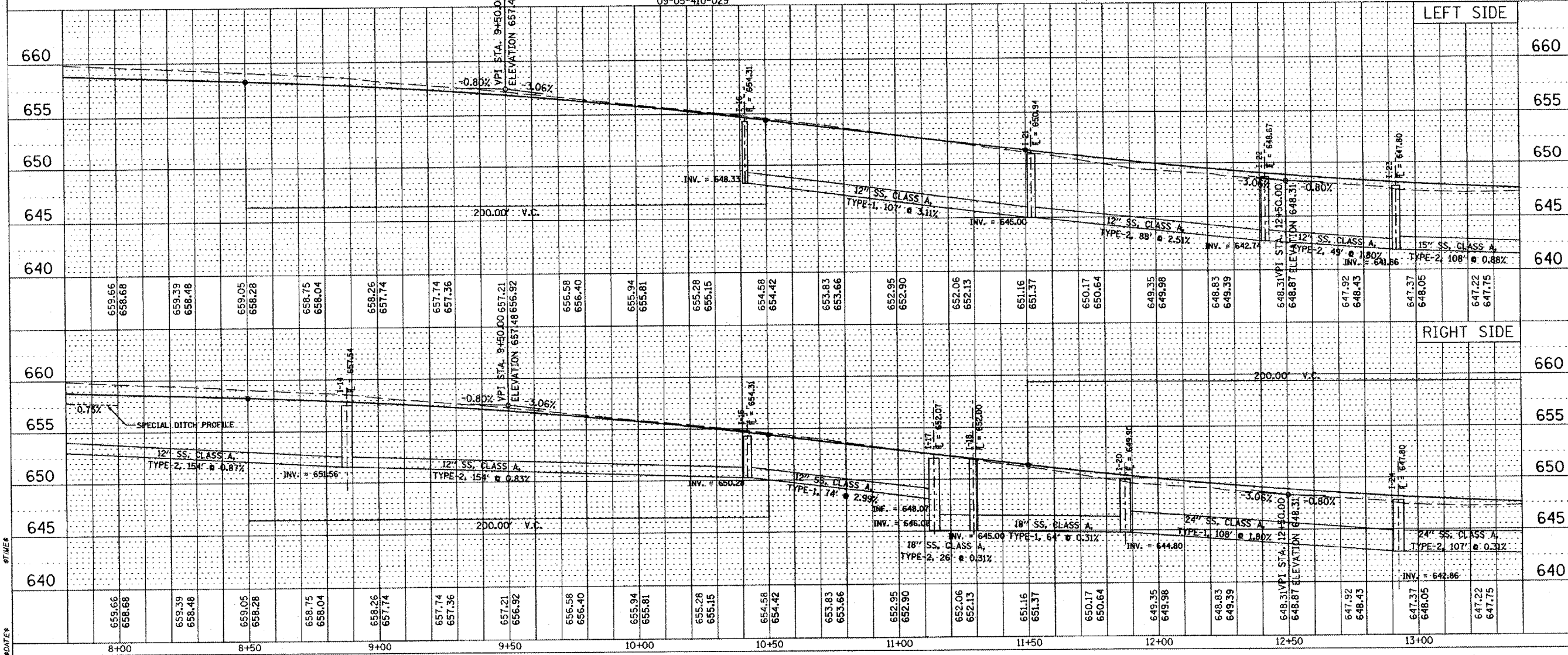
CORPORATE OFFICE
4940 OLD COLLINSVILLE RD.
SWANSEA, ILLINOIS 62226
TEL (618) 624-4488
FAX (618) 624-6688
corp@twm-inc.com

WATERLOO OFFICE
113 SOUTH MAIN STREET
WATERLOO, ILLINOIS 62298
TEL (618) 939-5050
FAX (618) 939-3938
waterloo@twm-inc.com

ST. LOUIS OFFICE
1001 CRAIG ROAD, SUITE 260
ST. LOUIS, MISSOURI 63146
TEL (314) 236-5052
FAX (314) 872-2194
stlouis@twm-inc.com

PROFESSIONAL REGISTRATIONS

ILLINOIS PROFESSIONAL DESIGN FIRM	184-00220
PROFESSIONAL ENGINEERING CORP.	62-03310
PROFESSIONAL STRUCTURAL ENGR. CORP.	81-00502
ILLINOIS PROF. LAND SURVEYING CORP.	048-00029
MISSOURI PROFESSIONAL ENGR. CORP.	NC 00528
MISSOURI LAND SURVEYING CORP.	NC 00036



SEAL

Revised Date: _____
Signature Date: _____

STATEMENT OF RESPONSIBILITY
I hereby certify that the documents herein to be authorized by my seal is restricted to this sheet, and I hereby declare my responsibility for all other drawings, specifications, estimates, reports or other documents or instruments relating to or intended to be utilized for any other part of the architectural, engineering or survey project.

PROPOSED DRAINAGE

**SEIBERT RD. RECONSTRUCTION
PHASE I
VILLAGE OF SHILOH
ST. CLAIR COUNTY, ILLINOIS**

REV.	DATE	DESCRIPTION
△	/ /	14+00
△	/ /	

DRAWN BY:	27
DESIGNED BY:	
CHECKED BY:	
APPROVED BY:	
PROJECT NUMBER:	OF 40 SHEETS
<input checked="" type="checkbox"/> ISSUED FOR REVIEW	<input type="checkbox"/> ISSUED FOR BIDDING
<input type="checkbox"/> ISSUED FOR CONSTR.	<input type="checkbox"/> RECORD DRAWING