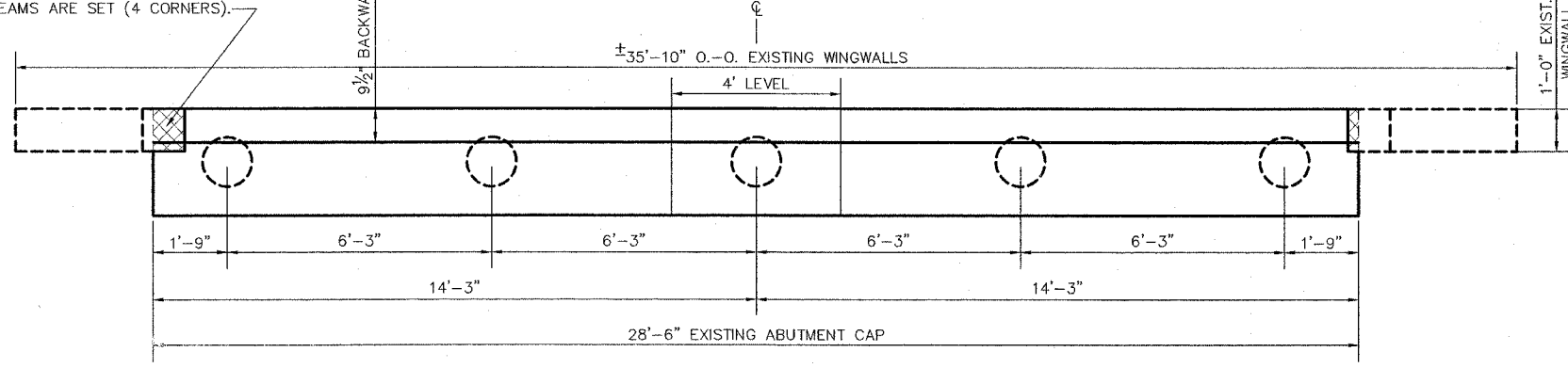


ROUTE NO.	SECTION	COUNTY	TOTAL SHEETS	SHEET NO.
F.A.S. 782 (KEYESPORT ROAD)	05-00084-00-BR 05-00079-00-BR	CLINTON & BOND	13	6

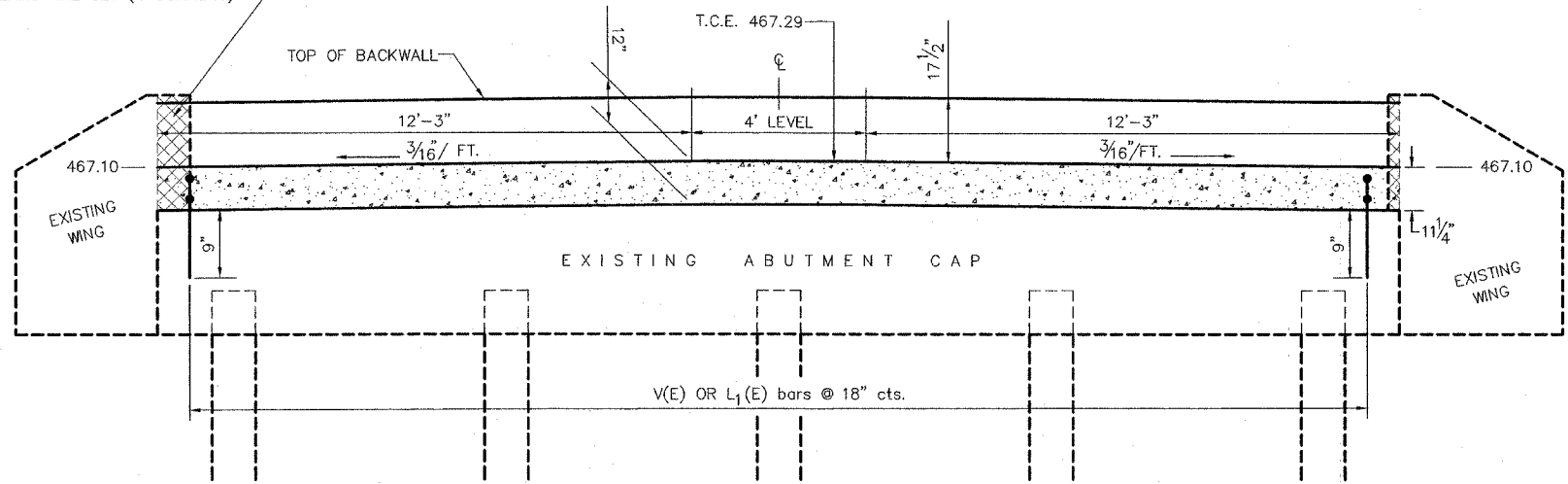
CONTRACT NO. 97272

SAW CUT EXISTING WING WALL FLUSH WITH THE END OF THE EXISTING ABUTMENT CAP AND REMOVE (3 CORNERS). FIELD POUR NEW WING WITH THE BACKWALL AFTER DECK BEAMS ARE SET (4 CORNERS).

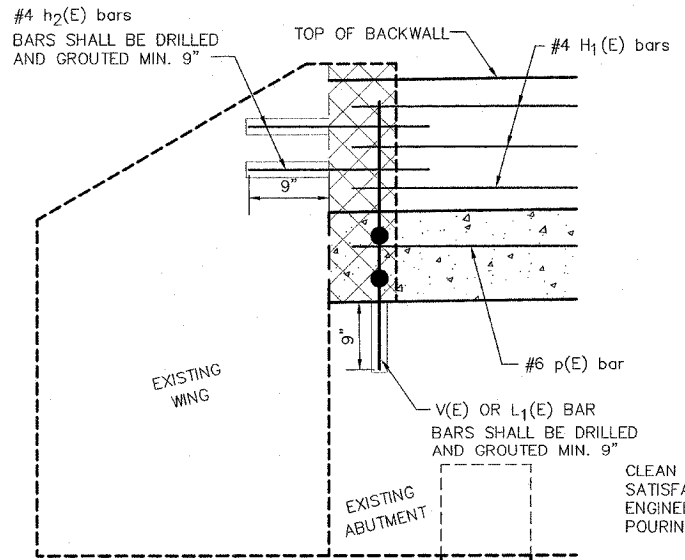


PLAN

SAW CUT EXISTING WING WALL FLUSH WITH THE END OF THE EXISTING ABUTMENT CAP AND REMOVE (3 CORNERS). FIELD POUR NEW WING WITH THE BACKWALL AFTER DECK BEAMS ARE SET (4 CORNERS).



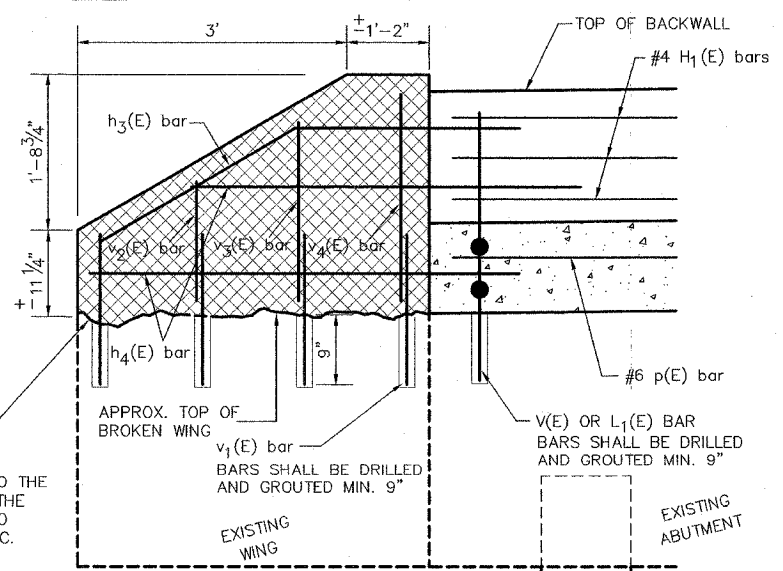
ELEVATION



WING DETAIL

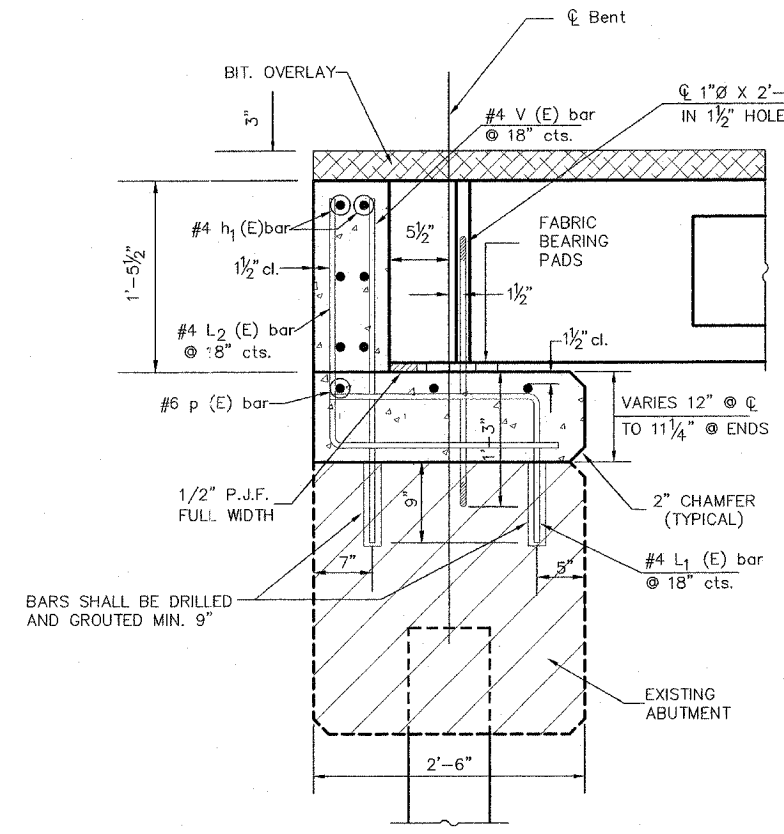
N.W., S.W., S.E. WINGS

CLEAN SURFACE TO THE SATISFACTION OF THE ENGINEER PRIOR TO POURING NEW CONC.



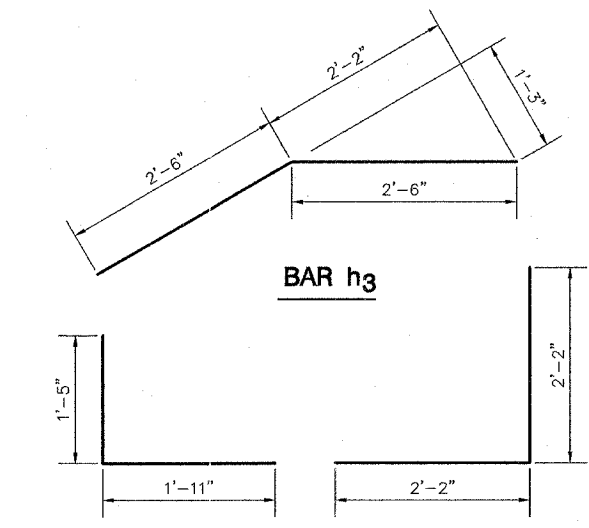
WING DETAIL

N.E. WING



SECTION THRU ABUTMENT

(AT RIGHT ANGLES)



NOTE:

Reinforcement bars shall conform to A.A.S.H.T.O. M-31 or M-322, Grade 60. All reinforcement bars shall be epoxy coated.

L₁(E), V(E), V₁(E), V₂(E), and H₂(E) bars shall be drilled and epoxy grouted in accordance with section 584 of the standard specifications.

BILL OF MATERIAL FOR EAST ABUTMENT

Bar	No.	Size	Length	Shape
h ₁ (E)	6	#4	28'-0"	—
h ₂ (E)	4	#4	2'-0"	—
h ₃ (E)	2	#4	5'-0"	—
h ₄ (E)	4	#4	5'-4"	—
L ₁ (E)	18	#4	3'-4"	L
L ₂ (E)	18	#4	4'-4"	L
p(E)	3	#6	28'-0"	—
v(E)	18	#4	2'-11"	—
v ₁ (E)	8	#4	1'-8"	—
v ₂ (E)	2	#4	1'-4"	—
v ₃ (E)	2	#4	2'-0"	—
v ₄ (E)	2	#4	2'-6"	—
Concrete Structures			4.0 Cu. Yds.	
Reinforcement Bars			410 Lbs.	

BILL OF MATERIAL FOR WEST ABUTMENT

Bar	No.	Size	Length	Shape
h ₁ (E)	6	#4	28'-0"	—
h ₂ (E)	8	#4	2'-0"	—
L ₁ (E)	18	#4	3'-4"	L
L ₂ (E)	18	#4	4'-4"	L
p(E)	3	#6	28'-0"	—
v(E)	18	#4	2'-11"	—
Concrete Structures			4.0 Cu. Yds.	
Reinforcement Bars			380 Lbs.	

ABUTMENT DETAILS

F.A.S. 782 (KEYESPORT ROAD)
OVER FLAT BRANCH
05-00084-00-BR & 05-00079-00-BR
CLINTON & BOND COUNTY
STATION 66+73
S.N. 014-3000