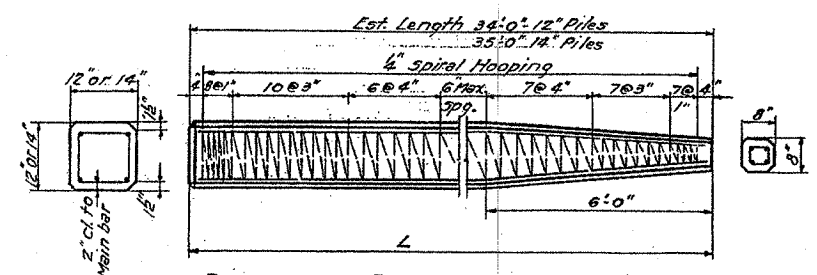
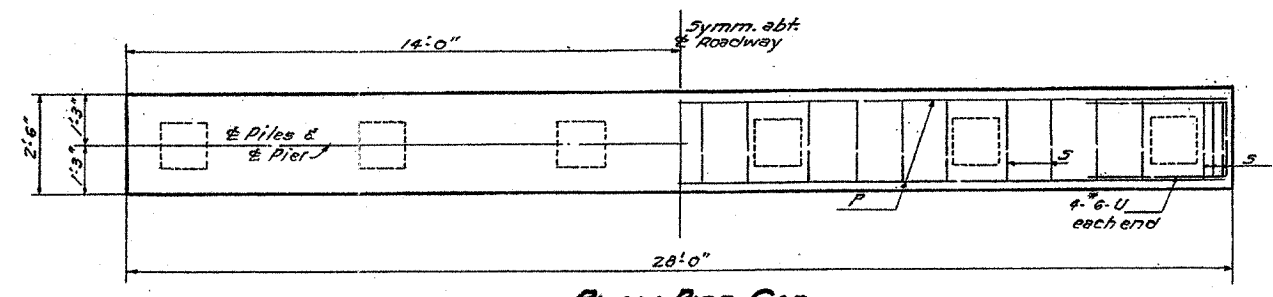
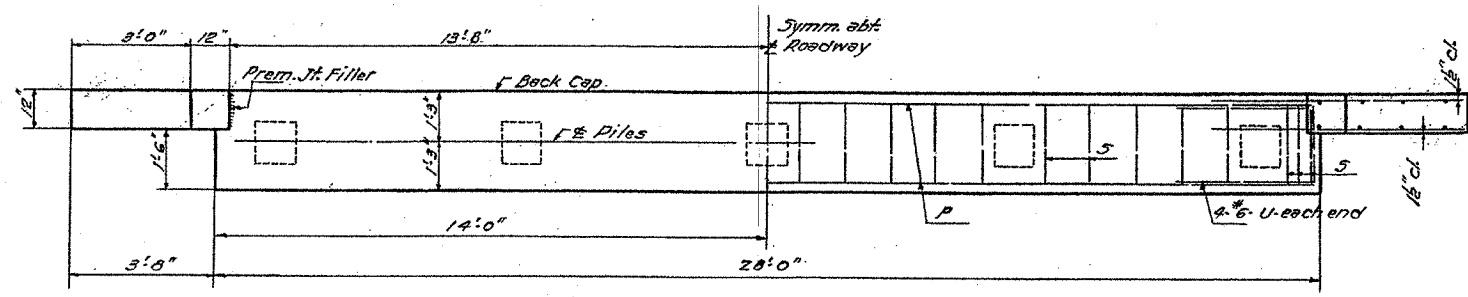
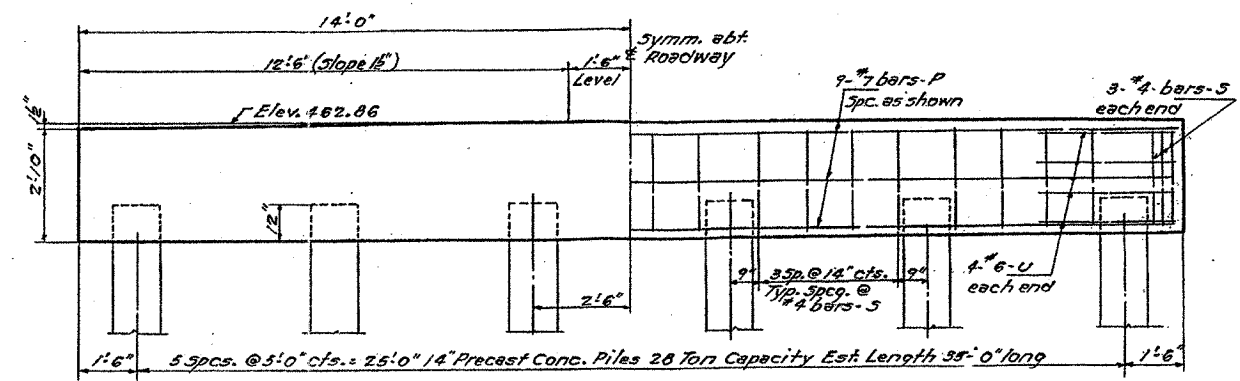
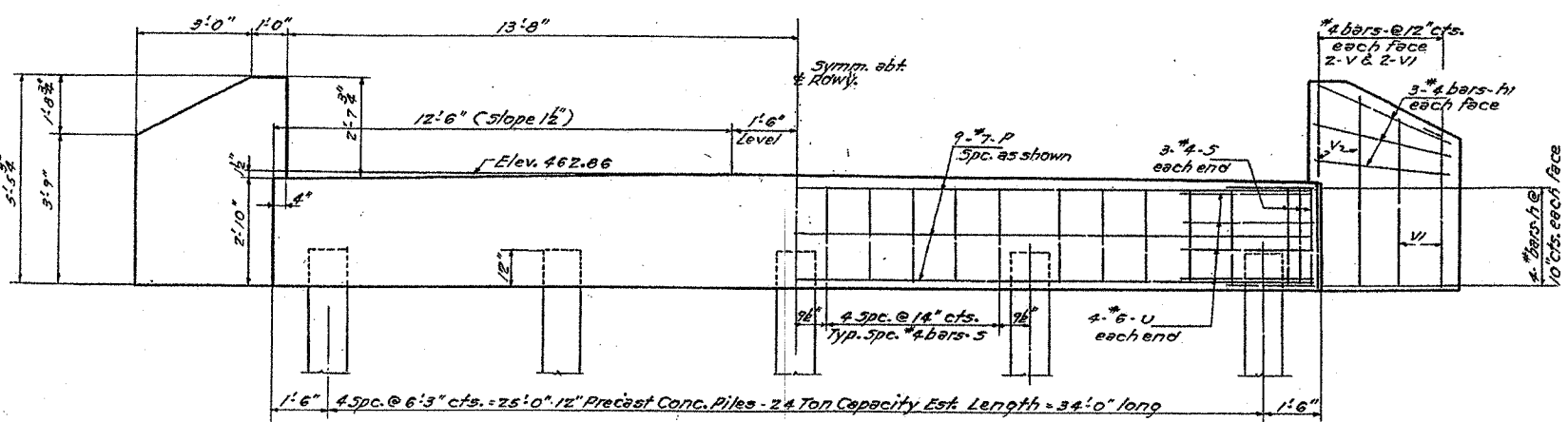


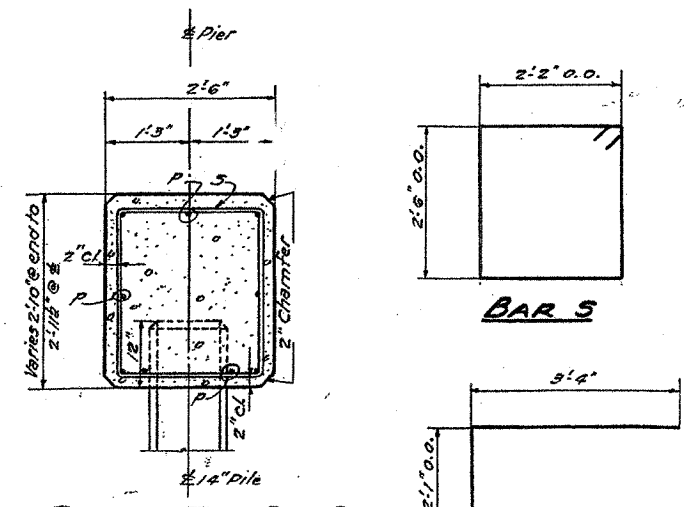
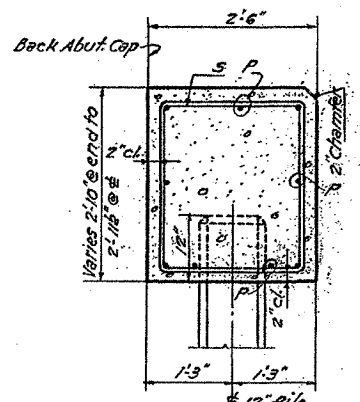
CONTRACT NO. 97272

Reference ONLY
Current Section

ROUTE NO.	SEC.	COUNTY	TOTAL SHEETS	SHEET NO.
782	23 Q	CLINTON	27	27
FED. ROAD DIST. NO. 5-82(6)				
782	Clinton Bond	05-00084-00BR 05-00079-00BR	13	13



Note: to Contractor: For pile length up to 45' use two slings placed at a distance of 0.21L from each end.



BAR S

BAR U

BILL OF MATERIAL - SUBSTR.

Bar	No.	Size	Length	Shape
P	36	#7	27'-6"	—
S	104	#4	10'-0"	□
U	32	#6	8'-9"	—
V	16	#4	5'-3"	—
VI	16	#4	4'-0"	—
h	32	#4	6'-6"	—
h1	24	#4	3'-9"	—
Class-X Concrete		Cu. Yds.		31.8
Reinforcement Bars		Lbs.		3440
12" Precast Concrete Piles (36')		Lin. Ft.		306
14" Precast Concrete Piles (35 1/2')		Lin. Ft.		385
Test Piles (12")		Each		1
Test Piles (14")		Each		1

PROJECT 5-82(6)
F.A.S. Rt. 782 - SECTION 23 Q
CLINTON COUNTY
STA. 66+73

FOR INFORMATION ONLY