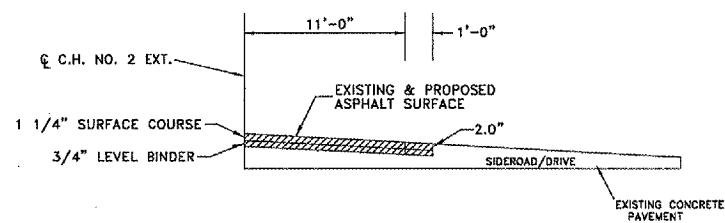
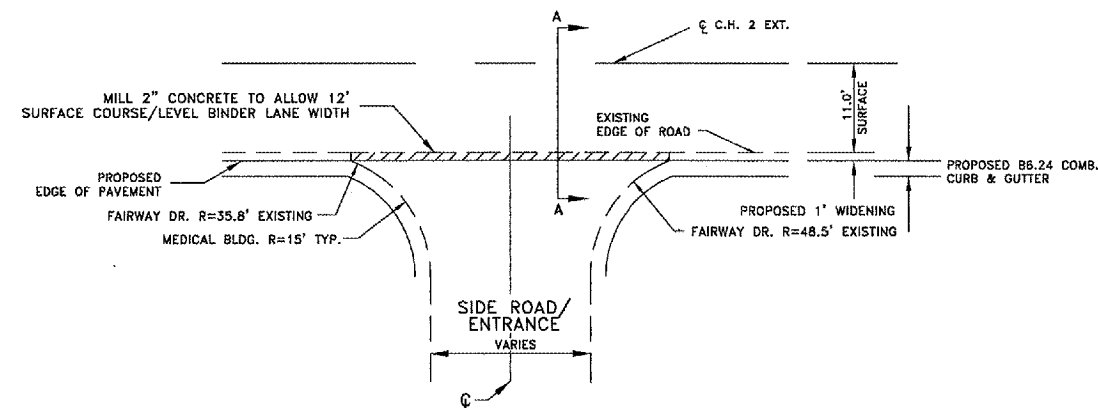
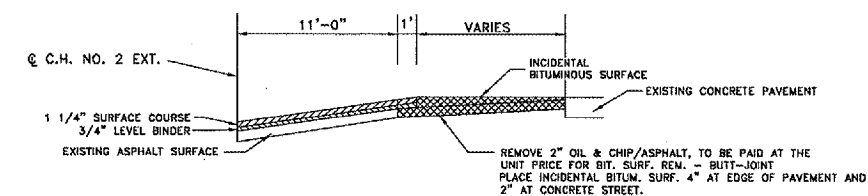
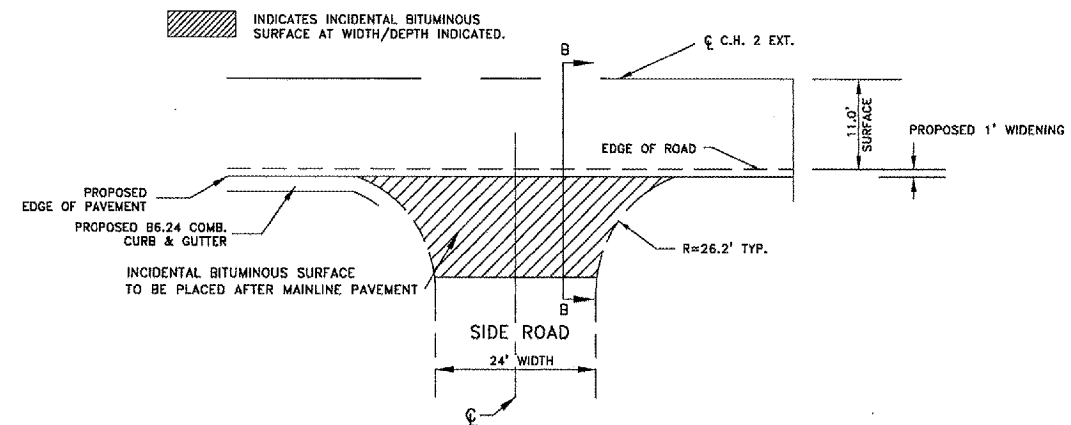


ROUTE NO	SECTION	COUNTY	TOTAL SHEETS	SHEET NO.
FAU 9319 C.H. 2 EXT	04-00042 -01-WR	MONROE	24	10

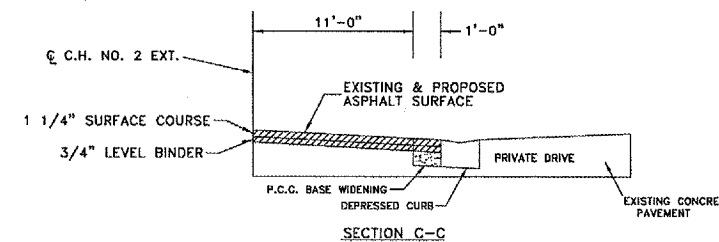
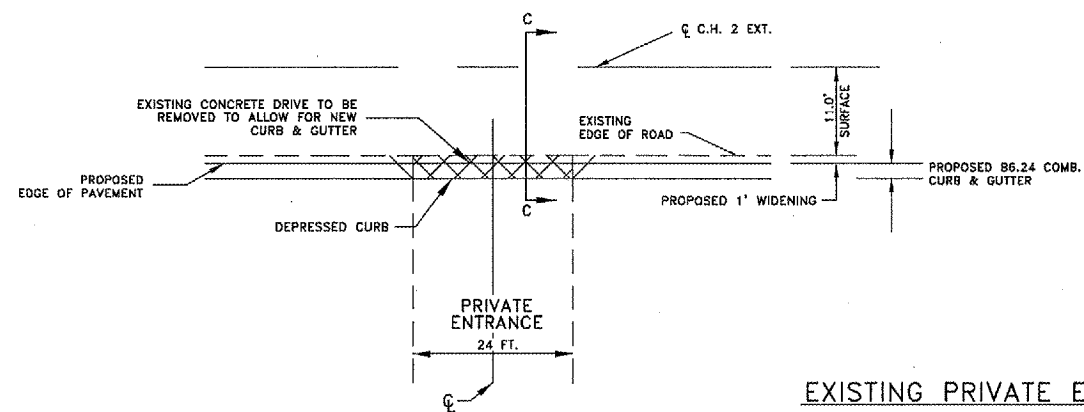
FEDERAL AID PROJECT  
CONTRACT NO. 97275



EXISTING FAIRWAY DRIVE STA. 11+75.79 RT.  
EXISTING MEDICAL BUILDING ENTRANCE STA. 11+64.32 LT.



EXISTING RIDGE ROAD STA. 19+27.33 RT.



EXISTING PRIVATE ENTRANCE STA. 10+39.44 RT.

ENTRANCE/SIDEROAD SCHEDULE

LOCATION STATION	SIDE LT/RT	TYPE OF ENTRANCE	EXISTING SURFACE	LENGTH FOOT	WIDTH FOOT	GRADE %	INC. BITUM. SURFACING TONS	BIT. MAT'L. (PRIME COAT) GALLON	AGGREGATE (PRIME COAT) TONS	B6.24 CURB & GUTTER FOOT	P.C.C.P. 6" SQ. YD.	CONC/ASPHALT BUTT JOINT SQ. YD.	PVMNT REM. SQ. YD.	COMMENTS
8+70.07	RIGHT	SIDE ROAD	ASPHALT	0.0	28.0	+2.0	0.0	0.0	0.0	16.0	0.0	0.0	0.0	OSTERHAGE DRIVE
10+39.44	RIGHT	PRIVATE	CONCRETE	3.58	24.0	+1.2	0.0	0.0	0.0	0.0	0.0	0.0	12.0	101 FAIRWAY DR.
11+64.32	LEFT	COMMERCIAL	CONCRETE	1.0	30.0	-0.1	0.0	0.0	0.0	36.0	0.0	6.0(CONC)	8.0	MEDICAL BUILDING
11+75.79	RIGHT	SIDE ROAD	CONCRETE	1.0	28.0	-0.7	0.0	0.0	0.0	53.0	0.0	11.0(CONC)	0.0	FAIRWAY DRIVE
19+27.33	RIGHT	SIDE ROAD	CONC/OIL & CHIP	9.4	24.0	+0.5	23.0	40.0	0.3	34.0	0.0	134.5(ASPH)	0.0	RIDGE ROAD
21+75.45	LEFT	COMMERCIAL	ASPHALT	11.58	24.0	+2.0	0.0	0.0	0.0	0.0	44.0	0.0	74.0	CARE CENTER
27+84.56	LEFT	COMMERCIAL	ASPHALT	11.58	35.0	+2.0	0.0	0.0	0.0	0.0	67.0	0.0	108.0	CARE CENTER
31+26.30	LEFT	FIELD	N/A	32.0	16.0	+3.2	0.0	0.0	0.0	0.0	0.0	0.0	0.0	FIELD ENTRANCE
31+43	RIGHT	SIDE ROAD	CONCRETE	10.0	50.0	-0.9	0.0	0.0	0.0	0.0	0.0	35.0(CONC)	0.0	EAGLE COURT
36+07	LEFT	PRIVATE	OIL & CHIP	4.0	20.0	-3.6	2.0	11.0	0.1	0.0	0.0	0.0	0.0	701 FLORAVILLE RD.
TOTAL							25.0	51.0	0.4	139.0	111.0	52.0(CONC) 134.5(ASPH)	202.0	

SIDE ROAD/ENTRANCE DETAIL  
SCHEDULE  
HAMACHER STREET IMPROVEMENTS  
SEC 04-00042-01-WR  
CITY OF WATERLOO  
MONROE COUNTY, IL

DRAWING FILE: S:\HAMACHER\PROV\TYPICAL.DWG