

F.A. RTE.	SECTION	COUNTY	TOTAL SHEETS	SHEET NO.
9002	03-00218-00-WR	MADISON	38	1
MADISON COUNTY ILLINOIS		FED. AID PROJECT		
CONTRACT NO. 97278				

STATE OF ILLINOIS
DEPARTMENT OF TRANSPORTATION
**PLANS FOR PROPOSED
FEDERAL AID HIGHWAY**
CITY OF ALTON
F.A.U. ROUTE 9002
FOSTERBURG ROAD-PHASE 1
SECTION 03-00218-00-WR
MADISON COUNTY
PROJECT NO. M-5011(194)
JOB NO. C-98-305-06

THIS PROJECT IS LOCATED IN SECTION 4, TOWNSHIP 5 NORTH, RANGE 9 AND SECTION 33 TOWNSHIP 6 NORTH, RANGE 9 WEST OF THE 3RD. PRINCIPAL MERIDIAN, MADISON COUNTY, ILLINOIS. UTILITY LOCATION CAN BE OBTAINED BY CALLING J.U.L.I.E. (1-800-892-0123)

THE FOLLOWING UTILITY COMPANIES HAVE FACILITIES WITHIN THE LIMITS OF THIS PROJECT WHICH MAY OR MAY NOT REQUIRE ADJUSTMENT OR RELOCATION:

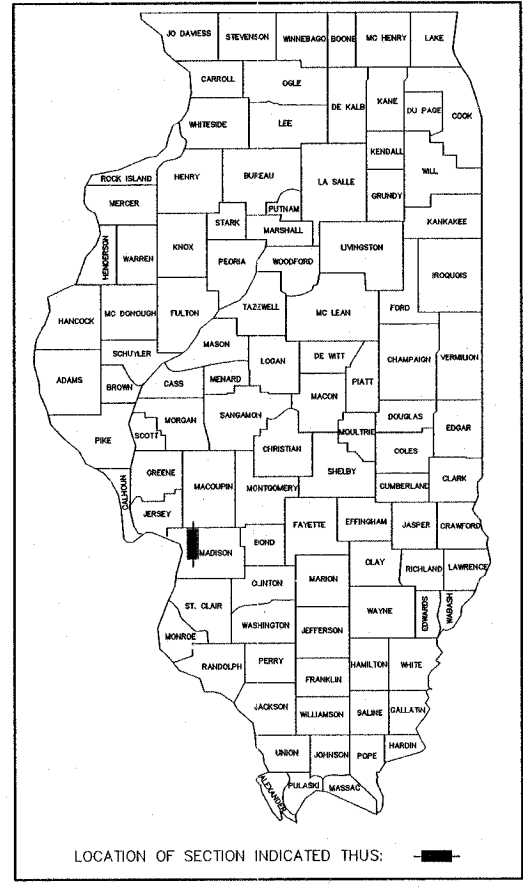
TELEPHONE:
SBC
203 GOETHE
COLLINSVILLE, ILLINOIS 62234
(618) 346-6400

WATER:
ILLINOIS AMERICAN WATER CO.
4436 INDUSTRIAL DRIVE
ALTON, ILLINOIS 62002
(618) 644-9429

GAS & ELECTRIC:
AMEREN U.E. COMPANY
700 OAKWOOD AVENUE
ALTON, ILLINOIS 62002
(618) 463-4043 GAS
(618) 463-4051 ELEC.

SANITARY & STORM SEWERS:
ALTON PUBLIC WORKS DEPARTMENT
2 EMMA KAUS LANE
ALTON, ILLINOIS 62002
(618) 466-3133

CABLE TELEVISION:
CHARTER COMMUNICATIONS
508 NIAGARA AVENUE
EAST ALTON, ILLINOIS 62024
(618) 251-2660

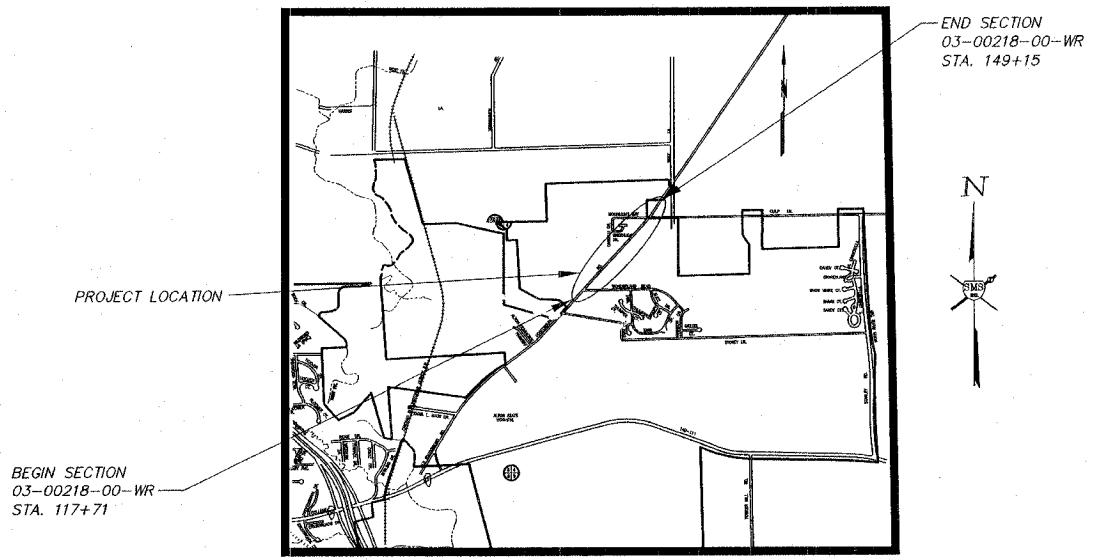


INDEX TO SHEETS

1. COVER SHEET
2. SUMMARY OF QUANTITIES, DETAILS OF CONSTRUCTION
3. DETAILS OF CONSTRUCTION
4. TYPICAL SECTIONS
- 5.-8. TRAFFIC CONTROL PLAN
9. EROSION CONTROL PLAN
- 10.-16. PLAN AND PROFILE
- 17.-23. PLAN AND PROFILE-STORM SEWER
- 24.-25. PAVEMENT PATCHING PLAN
- 26.-27. PAVEMENT MARKING PLAN
- 28.-38. CROSS SECTIONS

HIGHWAY STANDARDS

280001-02	630001-06
420701-01	631011-02
442101-05	701006-02
442201-01	701201-02
542301	701306-01
542401	701501-03
602301-01	701701-04
602306-01	702001-06
602401-01	720001
602601	720006
602701-01	720011
604001-02	729001
604066-01	780001-01
606001-02	781001-02
606201	



LOCATION MAP
SCALE: 1" = 1000'

TOTAL LENGTH OF PROJECT = 3,144 FT. = 0.595 MILES

SMS ENGINEERS Sheppard, Morgan & Schwaab, Inc.
CONSULTING ENGINEERS & LAND SURVEYORS

215 Market Street
Alton, Illinois 62002
618/432-9755

10 Central Industrial Dr
Northgate Center
Granite City, IL 62040
618/877-8700



DATED: JANUARY, 2006
EXPIRES: NOVEMBER 30, 2007

ROADWAY CLASSIFICATION = (MINOR ARTERIAL)
DESIGN SPEED = 45 M.P.H.
CONTRACT NO. 97278

APPROVED March 8 2006
Donald E. Sandige
MAYOR, ALTON, ILLINOIS

PASSED April 2 2006
Jennyfer Coertino
LOCAL ROADS AND STREETS ENGINEER

APPROVED April 12 2006
Mary C. Lamie
Mary C. Lamie P.E.
Deputy Director of Highways
Region Five Engineer

STATE OF ILLINOIS
DEPARTMENT OF TRANSPORTATION