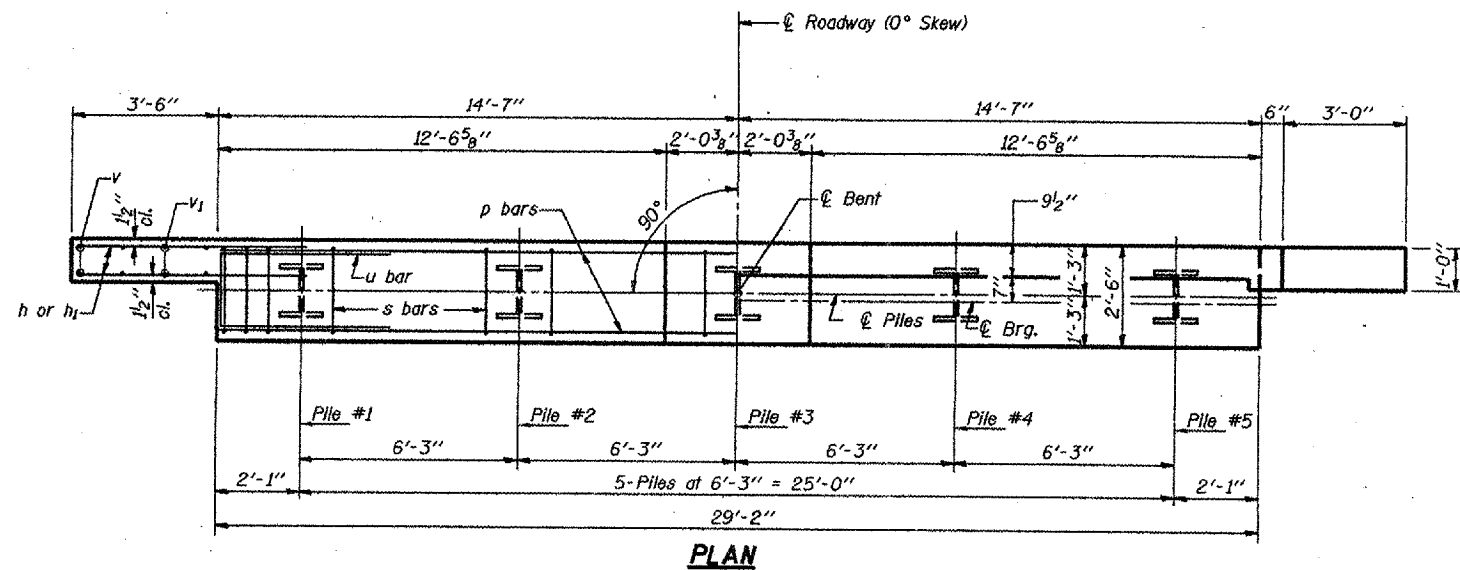
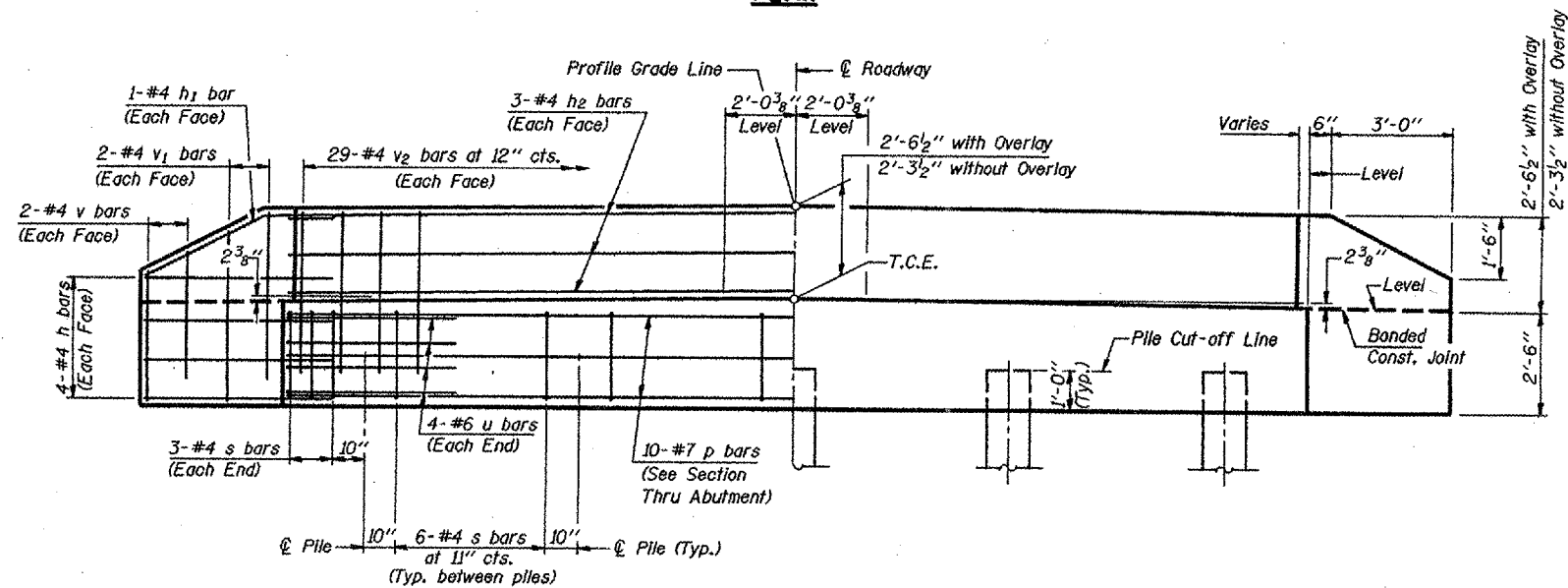


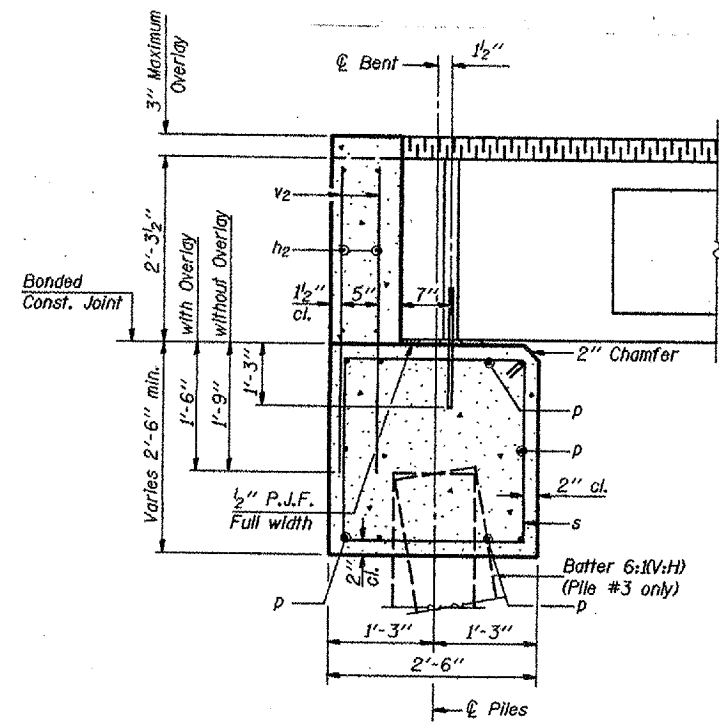
CONTRACT NO. 97279



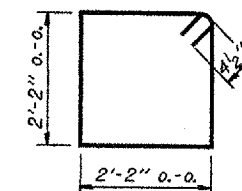
PLAN



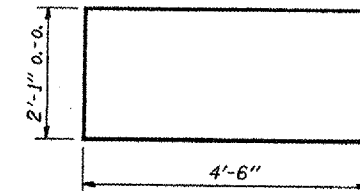
ELEVATION



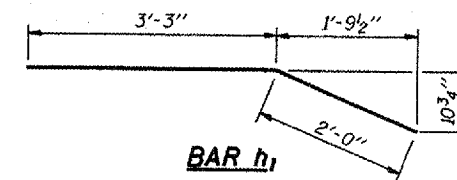
SECTION THRU ABUTMENT
(At Right Angles)



BAR s



BAR u



BAR h1

BILL OF MATERIAL FOR ONE ABUTMENT

Bar	No.	Size	Length	Shape
h	16	#4	5'-0"	—
h1	4	#4	5'-3"	—
h2	6	#4	28'-10"	—
p	10	#7	28'-10"	—
s	30	#4	9'-5"	□
u	8	#6	11'-1"	□
v	8	#4	3'-2"	—
v1	8	#4	4'-2"	—
v2	58	#4	3'-11"	—
Concrete Structures			10.4 Cu. Yds.	
Reinforcement Bars			1290 Lb.	

NOTES

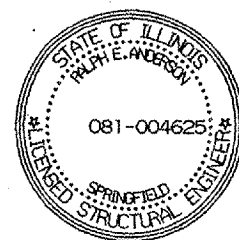
- The Backwall and the portion of the Wingwalls above the bonded construction joint shall be cast against the in-place beam.
- Reinforcement bars shall conform to the requirements of A.A.S.H.T.O. M-31 or M-322, Grade 60.
- Space reinforcement in cap to miss anchor bolts.

MAXIMUM PILE LOADS

SPAN	TONS
50'	33

DESIGN STRESSES

$f'c = 3,500 \text{ psi}$
 $f_y = 60,000 \text{ psi}$



EXPIRES 11-30-2006

DESIGNED	JFS
CHECKED	JKK
DRAWN	SMS
CHECKED	JFS, JKK

APRIL 5, 2006
 EXAMINED *Thomas J. Donagallo*
 PASSED *Ralph E. Anderson*
 ENGINEER OF BRIDGES AND STRUCTURES

STR. NO. 079-3194
F.A.S. ROUTE 863 OVER
COX CREEK
SECTION 05-00039-04-BR
RANDOLPH COUNTY
STA. 28+36