

P.L. NO.	SECTION	COUNTY	TOTAL SHEETS	SHEET NO.
*	**	***	10	6
STA.	TO STA.			
FED. ROAD DIST. NO.	ALMOS	FED. AID PROJECT		

•OLD IL 13/ IL 127  
 \*\*PAVEMENT PRESERVATION FY 06  
 \*\*\*GALLATIN AND PERRY COUNTIES

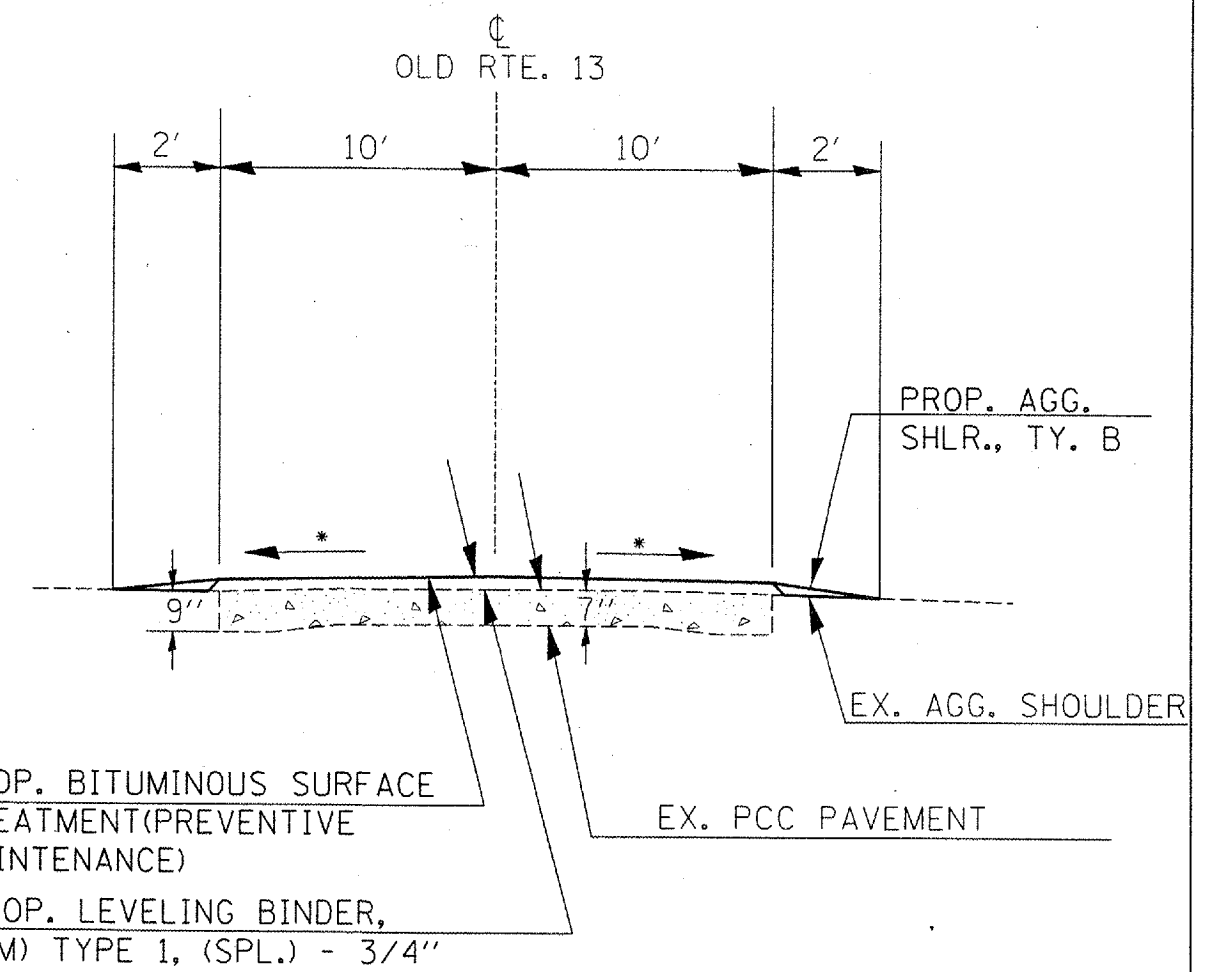
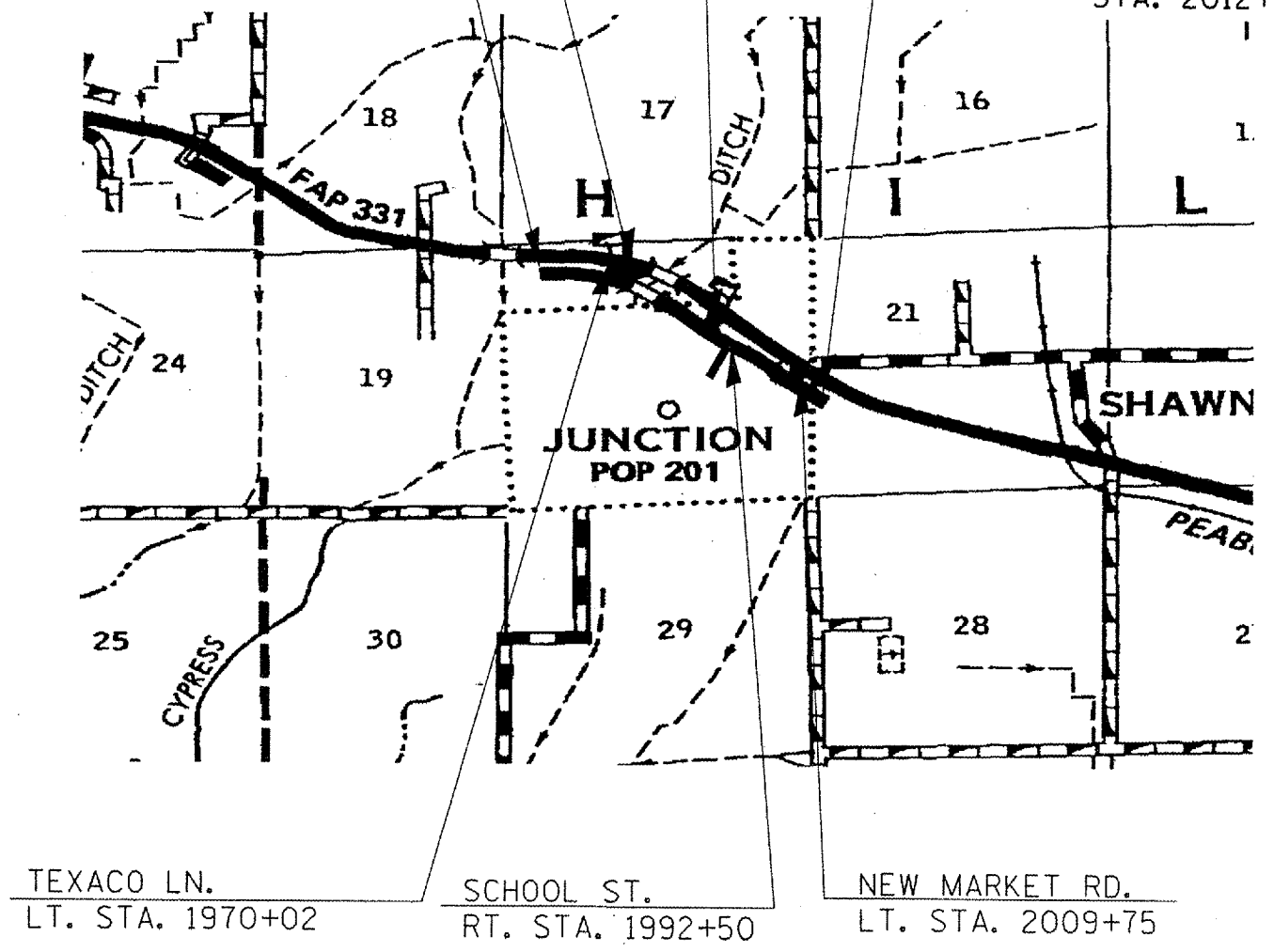
LOCATION 2 MAP AND TYPICAL SECTION  
 OLD RTE. 13 AT JUNCTION  
 STA. 1957+20 TO STA. 2012+00

OMIT EXIST. STR. 030-0014  
 STA. 1976+95.2 TO STA. 1978+01.8

PROP. PROJECT BEGINS  
 STA. 1957+20

OMIT EXIST. INTERSECTION AT  
 JUNCTION RD.  
 STA. 1989+53 TO STA. 1990+47  
 (INTERSECTION EQ. STA. 5+42.06 (JUNCTION RD.) =  
 STA. 1990+00.65 (OLD IL. 13)

PROP. PROJECT ENDS  
 STA. 2012+00



PROP. BITUMINOUS SURFACE  
 TREATMENT(PREVENTIVE  
 MAINTENANCE)  
 PROP. LEVELING BINDER,  
 (MM) TYPE 1, (SPL.) - 3/4"

EX. PCC PAVEMENT

PROP. AGG.  
 SHLR., TY. B

EX. AGG. SHOULDER

TO BE USED:  
 STA. 1957+20 TO STA. 1976+95.2 (W. ABUT.)  
 STA. 1978+01.8 (E. ABUT.) TO STA. 1989+53  
 STA. 1990+47 TO STA. 2012+00

\* MATCH EXISTING SLOPE