

ILL. RTE.	SECTION	COUNTY	TOTAL SHEETS	SHEET NO.
*	**	***	10	1

- OLD IL 13/ IL 127
- PAVEMENT PRESERVATION FY 06
- GALLATIN AND PERRY COUNTIES

D-99-037-05

# STATE OF ILLINOIS

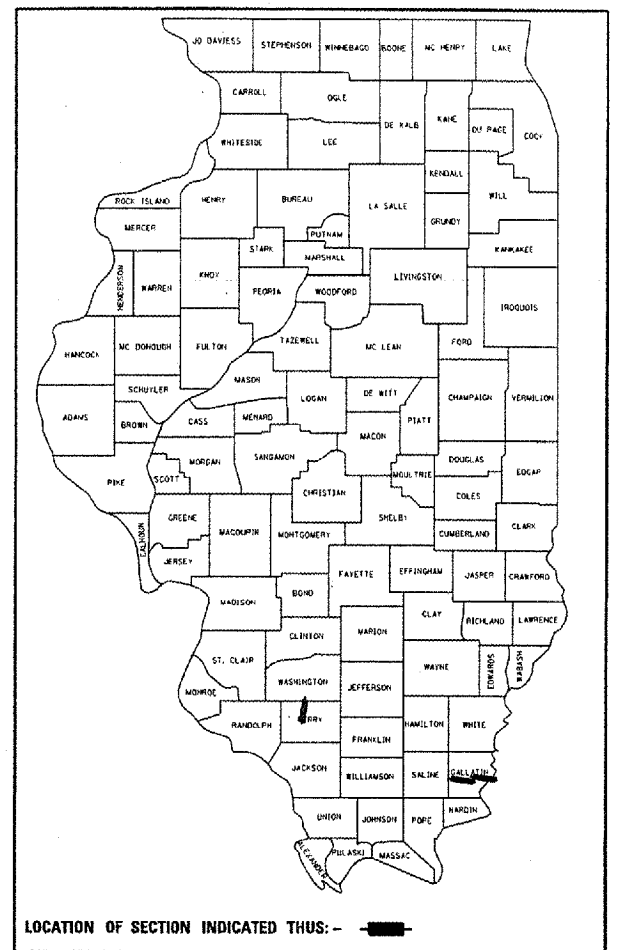
## DEPARTMENT OF TRANSPORTATION

### DIVISION OF HIGHWAYS

# PROPOSED HIGHWAY PLANS

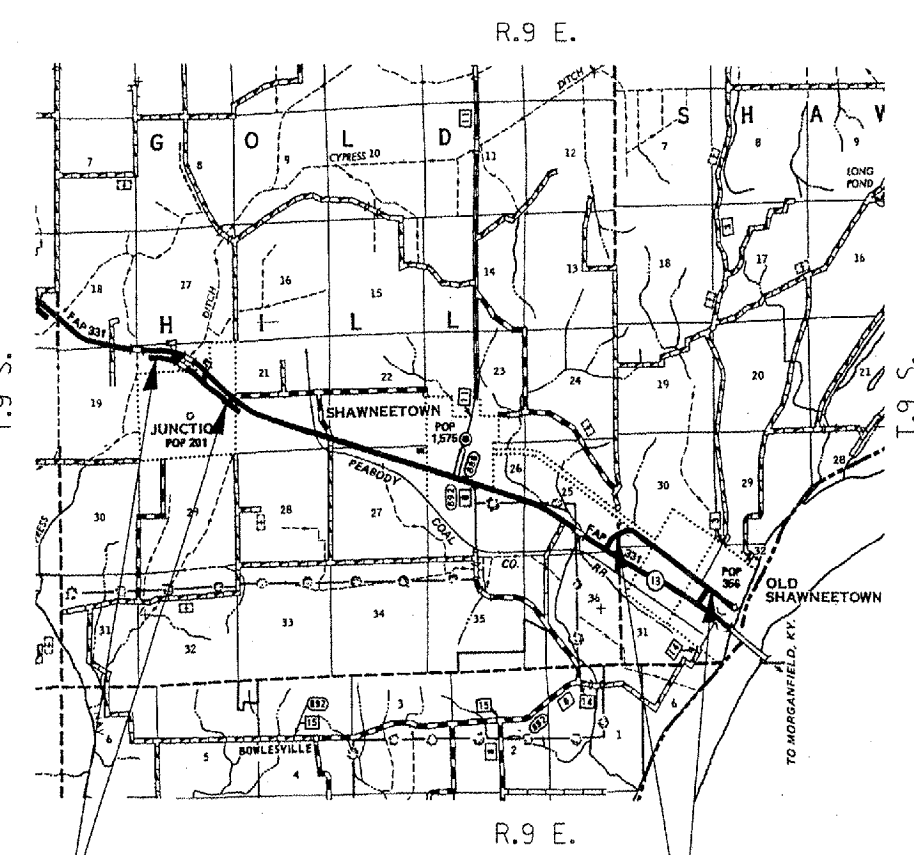
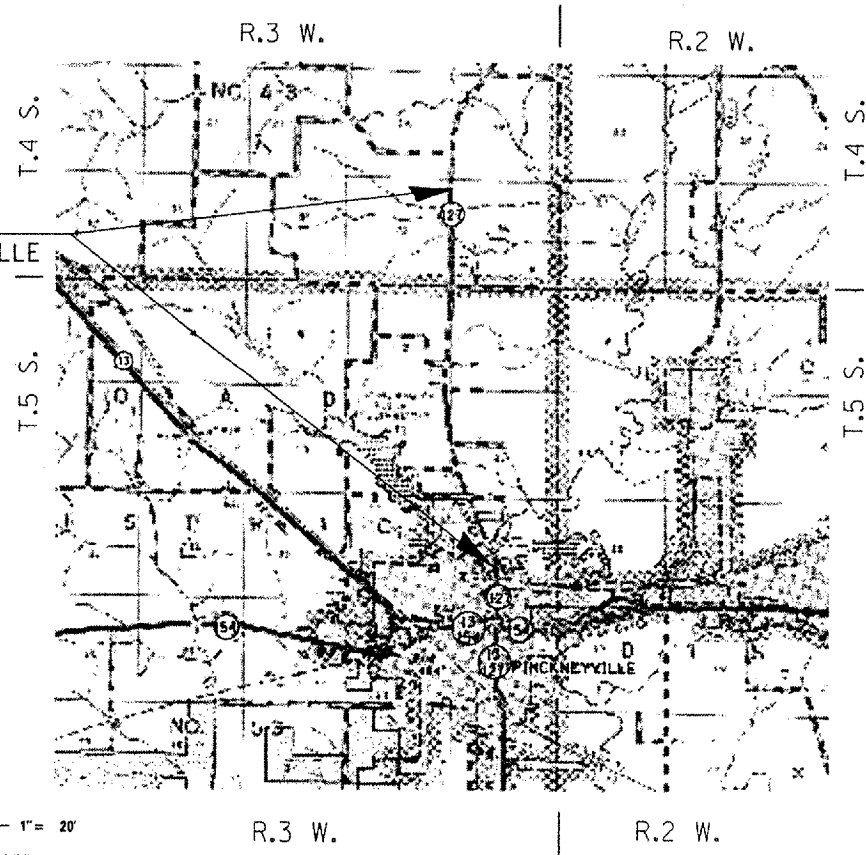
**S.B.I. 1 (OLD ROUTE 13 / IL 127)**  
**SECTION PAVEMENT PRESERVATION FY 06**  
**GALLATIN AND PERRY COUNTIES**  
**C-99-031-05**

FOR INDEX OF SHEETS, SEE SHEET NO. 2  
 FOR SUMMARY OF QUANTITIES, SEE SHEET 4.  
 TRAFFIC DATA (2003):  
 LOCATION 1 - OLD IL 13 - OLD SHAWNEETOWN  
 ADT = 700  
 % OF TRUCKS = 2%  
 LOCATION 2 - OLD IL 13 - JUNCTION  
 ADT = 25  
 % OF TRUCKS = 0%  
 LOCATON 3 - IL 127 - PINCKNEYVILLE  
 ADT = 3600  
 % OF TRUCKS = 2.3%  
 PV = 2750  
 MU = 200  
 SU = 650



LOCATION OF SECTION INDICATED THUS: -

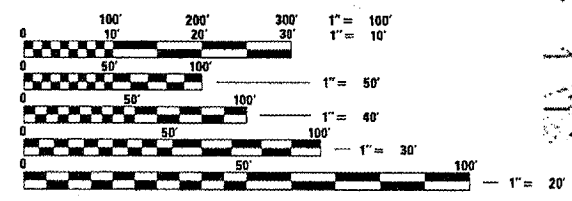
LOCATION 3 -  
 IL. RTE. 127 - NORTH OF PINCKNEYVILLE  
 3.02 MILES



LOCATION 2 -  
 OLD RTE. 13 AT JUNCTION  
 1.00 MILES

LOCATION 1 -  
 OLD RTE. 13 AT OLD SHAWNEETOWN  
 1.28 MILES

TOWNSHIPS: SHAWNEE; GOLD HILL; PINCKNEYVILLE



FULL SIZE PLANS HAVE BEEN PREPARED USING STANDARD ENGINEERING SCALES. REDUCED SIZED PLANS WILL NOT CONFORM TO STANDARD SCALES. IN MAKING MEASUREMENTS ON REDUCED PLANS, THE ABOVE SCALES MAY BE USED.

J.U.L.I.E.  
 JOINT UTILITY LOCATION INFORMATION FOR EXCAVATION  
 1-800-892-0123

STATE OF ILLINOIS  
 DEPARTMENT OF TRANSPORTATION  
 DIVISION OF HIGHWAYS

SUBMITTED *March 24, 2006*  
*Mike C. Lamm*  
 DEPUTY DIRECTOR OF HIGHWAYS, REGION ENGINEER

*May 12, 2006*  
*Mike Hine*  
 ENGINEER OF DESIGN AND ENVIRONMENT

*May 12, 2006*  
*Milton R. Sees P.E.*  
 DIRECTOR OF HIGHWAYS, CHIEF ENGINEER

**PRINTED BY THE AUTHORITY OF THE STATE OF ILLINOIS**

CONTRACT NO. 98933

NET LENGTH OF PROJECT: 28,014 FT. = 5.30 MILES

PROJECT ENGINEER: CHARLES STEIN - (618)351-5210  
 DESIGN TECHNICIAN: KATHI MCCORD - (618)351-5216

IL. DIST.	SECTION	COUNTY	TOTAL SHEETS	SHEET NO.
*	**	***	10	2
STA.		TO STA.		
FED. ROAD DIST. NO.		ILLINOIS	FED. AID PROJECT	

- OLD IL 13/ IL 127
- PAVEMENT PRESERVATION FY 06
- GALLATIN AND PERRY COUNTIES

INDEX OF SHEETS

SHEET NO.	DESCRIPTION
1	COVER SHEET
2	SIGNATURE SHEET, INDEX OF SHEETS AND HIGHWAY STANDARDS ; STRUCTURE RATINGS; EQUATION STATIONS
3	GENERAL NOTES; MIXTURE REQUIREMENTS
4	SUMMARY OF QUANTITIES
5	PAVEMENT MARKING SCHEDULE
6	RESURFACING SCHEDULES
7	LOCATION 1 MAP - OLD RTE. 13 AT OLD SHAWNEETOWN AND TYPICAL
8	LOCATION 2 MAP - OLD RTE. 13 AT JUNCTION AND TYPICAL
9	LOCATION 3 MAP - IL. RTE. 127 NORTH OF PINCKNEYVILLE AND TYPICAL
10	TRANSITION DETAILS AT LOCATION 2
11	SIDEROAD AND ENTRANCE DETAILS AT LOCATION 2 - JUNCTION

STRUCTURE RATINGS

STRUCTURE NO.	INV. RATING	OPER. RATING	SUFF. RATING
OLD RTE 13 (JUNCTION IN GALLATIN CO.)			
030-0014	12.3	22.7	79.4
IL RTE 13 (NORTH OF P'VILLE IN PERRY CO.)			
073-0021	17.0	28.2	71.3

HIGHWAY STANDARDS

701201-02      702001-06  
 701306-01      780001-01  
 701311-02

EQUATION STATION SCHEDULE

LOCATION 1  
 OLD RTE. 13 OLD SHAWNEETOWN:  
 PT EQ. STA. 2246+71(BK.) (OLD RTE. 13)=  
 STA. 2247+33 (AH) (OLD RTE. 13)

LOCATION 2  
 OLD RTE. 13 NEAR JUNCTION:  
 EQ. STA. 5+42.06( (JUNCTION RD.)=  
 STA. 1990+00.65 (OLD RTE. 13)

LOCATION 3  
 EX. STA. 18+373 (METRIC) (IL. 127)=  
 EX. STA. 30+25 (ENGLISH) (IL. 127)

Prepared By: Joe Zland  
 DISTRICT STUDIES & PLANS ENGINEER

Examined By: James Travis Emery  
 DISTRICT LAND ACQUISITION ENGINEER

Examined By: Carrie Nelson  
 DISTRICT PROGRAM DEVELOPMENT ENGINEER

Examined By: Jim Smother  
 DISTRICT OPERATIONS ENGINEER

Examined By: Gregory Lewis  
 DISTRICT CONSTRUCTION ENGINEER

Examined By: Bruce W. Dinkels  
 DISTRICT MATERIALS ENGINEER

Examined By: Danny L. Stanton  
 DISTRICT PROJECT IMPLEMENTATION ENGINEER

Examined By: Danny L. Stanton  
 ASSISTANT REGIONAL ENGINEER

Approved By: Mary C. Lammie  
 DEPUTY DIRECTOR OF HIGHWAYS, REGION ENGINEER

MARCH 24 2006  
 DATE

SECTION	COUNTY	TOTAL SHEETS	SHEET NO.
**	***	10	3
STA. TO STA.		FED. AID PROJ. NO.	

•OLD IL 13/ IL 127  
 ••PAVEMENT PRESERVATION FY 06  
 •••GALLATIN AND PERRY COUNTIES

GENERAL NOTES

THE THICKNESS OF BITUMINOUS MIXTURE SHOWN ON THE PLANS IS THE NOMINAL THICKNESS. DEVIATIONS FROM THE NOMINAL THICKNESS WILL BE PERMITTED WHEN SUCH DEVIATIONS OCCUR DUE TO IRREGULARITIES IN THE EXISTING SURFACE OR BASE ON WHICH THE BITUMINOUS MIXTURE IS PLACED.

FACTORS USED FOR ESTIMATING PLAN QUANTITIES ARE AS FOLLOWS AND SHALL NOT BE USED FOR THE BASIS OF FINAL QUANTITIES EXCEPT FOR QC/QA OF BITUMINOUS MIXTURES:

ALL BITUMINOUS CONCRETE.....2.016 TONS/CU.YD.  
 ALL AGGREGATE.....2.05 TONS/CU.YD.

BITUMINOUS MATERIALS (PRIME COAT)  
 ON PAVEMENT.....0.09 GAL/SQ YD  
 ON AGG. SURF.....0.32GAL/SQ. YD.

AGGREGATE (PRIME COAT).....0.0015 TONS/SQ. YD.

THE QUANTITY OF SHORT TERM PAVEMENT MARKING SHOWN IN THE PLANS WAS BASED ON ONE APPLICATION EACH FOR THE PRIME COAT AND SURFACE TREATMENT.

PRIOR TO PLACEMENT OF THE FINAL PAVEMENT MARKINGS THE RESIDENT ENGINEER SHOULD CONTACT THE BUREAU OF OPERATIONS AND ARRANGE FOR INSPECTION AND APPROVAL OF THE PAVEMENT MARKING LAYOUT.

THE CONTRACTOR SHALL PRESERVE EXISTING STAMPED STATIONING AT LOCATIONS 1. NOTHING WILL BE DONE AT LOCATION 2. AT LOCATION 3 ON IL. 127, THE EXISTING STATIONING IS STAMPED IN METRIC UNITS. WHILE THE PROJECT IS CALCULATED IN ENGLISH UNITS OF MEASUREMENTS, THE CONTRACTOR SHALL PRESERVE THE EXISTING METRIC STAMPED STATIONING IN THE PAVEMENT.

UNLESS OTHERWISE DIRECTED BY THE ENGINEER, BITUMINOUS RESURFACING SHALL BE PLACED IN A SEQUENCE THAT WILL MINIMIZE THE TIME THE CENTER-LINE EDGE IS EXPOSED TO TRAFFIC.

QUANTITIES SHOWN IN THE PLANS FOR PATCHING ARE ESTIMATES. THE ACTUAL AMOUNT OF PATCHING REQUIRED SHALL BE DETERMINED BY THE ENGINEER IN THE FIELD. THE CLASS D PATCHING IS LOCATED AT LOCATION 2 - JUNCTION AT STA. 2009+75 AT THE MARKET ST. SIDE RD.

RECLAIMED ASPHALT PAVEMENT (RAP) WILL NOT BE ALLOWED FOR USE AS AGGREGATE IN AGGREGATE SHOULDERS, TYPE B.

QUANTITIES SHOWN IN THE PLANS FOR PAVEMENT GRINDING ARE ESTIMATES. THE ACTUAL AMOUNT OF PAVEMENT GRINDING REQUIRED SHALL BE DETERMINED BY THE ENGINEER IN THE FIELD.

THE CONTRACTOR SHALL DEVISE AND SUBMIT A JOINT PLAN THAT MEETS THE APPROVAL OF THE ENGINEER. THE SEAMS SHOULD BE STAGGERED SO THAT THEY DON'T BUILD UP A HUMP OR CRACK OPEN. THE CONTRACTOR SHOULD FOLLOW THE EXISTING HOT-MIX LAYOUT AS CLOSELY AS POSSIBLE. EACH INDIVIDUAL LANE SHOULD BE DONE EDGE TO EDGE IN ONE PASS. SHOULDERS SHALL BE DONE SEPARATELY.

THE AGGREGATE TO BE USED IN THE MICRO-SURFACING SHALL BE TYPE III APPLIED AT 18 LB/SQ YD PER PASS. THE AGGREGATE TO BE USED IN THE MICRO-SURFACING (CAPE SEAL) SHALL BE TYPE II APPLIED AT 24 LB/SQ YD PER PASS.

BITUMINOUS MATERIAL (PRIME COAT) SHALL BE APPLIED AT ALL LOCATIONS PRIOR TO PLACING MICRO-SURFACING AT A RATE OF 0.05 - 0.10 GAL/SQ. YD.

LOCATION 1 AND 3 -

LOCATION(S):	BITUMINOUS MATERIALS (PRIME COAT) SPECIAL
MIXTURE USE(S):	POLYMER MODIFIED EMULSIFIED ASPHALT
REQUIREMENTS:	SS-1HP OR CSS-1HP

LOCATION 2 - JUNCTION

LOCATION(S):	LEVELING BINDER
MIXTURE USE(S):	BITUMINOUS CONCRETE SURFACE COURSE, SUPERPAVE, MIXTURE C, N90
AC/PG:	PG64-22
RAP % (MAX):	10
DESIGN AIR VOIDS:	4.0 %, 90 GYRATION SUPERPAVE DESIGN
MIXTURE COMPOSITION: (GRADATION MIXTURE)	IL-9.5 MM OR IL-12.5 MM
FRICTION AGGREGATE:	C SURFACE

LOCATION 2 - JUNCTION

LOCATION(S):	CL. D PATCHES
MIXTURE USE(S):	BITUMINOUS CONCRETE BINDER COURSE, SUPERPAVE, N90, IL-19.0
AC/PG:	PG64-22
RAP % (MAX):	10
DESIGN AIR VOIDS:	4.0 %, 90 GYRATION SUPERPAVE DESIGN
MIXTURE COMPOSITION: (GRADATION MIXTURE)	IL-19.0 MM
FRICTION AGGREGATE:	NONE

REV.

P.L. NO.	SECTION	COUNTY	TOTAL SHEETS	SHEET NO.
*	**	***	10	4
STA.		TO STA.		
FED. ROAD DIST. NO.		ILLINOIS	FED. AID PROJECT	

- OLD IL 13/ IL 127
- PAVEMENT PRESERVATION FY 06
- GALLATIN AND PERRY COUNTIES

## SUMMARY OF QUANTITIES

### SUMMARY OF QUANTITIES

CODE NUMBER	ITEM DESCRIPTION	UNIT	TOTAL QUANTITY	LOCATION 1 - OLD SHAWNEETOWN OLD IL 13	LOCATION 2 - JUNCTION OLD IL 13	LOCATION 3 - PINCKNEYVILLE IL 127
				RURAL 100% STATE CAPE SEAL GALLATIN 1000 QUANTITY	RURAL 100% STATE BIT. SURF. TREAT. (PM) GALLATIN 1000 QUANTITY	RURAL 100% STATE MICROSURFACING PERRY 1000 QUANTITY
X0324633	BITUMINOUS SURFACE TREATMENT (PREVENTIVE MAINTENANCE)	SQ YD	11864		11864	
X0324951	CAPE SEAL	SQ YD	13520	13520		
X0325223	FIBER ASPHALT	POUND	10365	2503	1956	5906
X4060510	LEVELING BINDER (MACHINE METHOD) TYPE 1 (SPECIAL)	TON	507		507	
Z0037200	PAVEMENT GRINDING	SQ YD	178		178	
Z00 40315	PILOT CAR	DAY	4			4
40600100	BITUMINOUS MATERIALS (PRIME COAT)	GALLON	7029			7029
40600105	BITUMINOUS MATERIALS (PRIME COAT), SPECIAL	GALLON	2285	1217	1068	
44201769	CLASS D PATCHES, TYPE III, 10 INCH	SQ YD	17		17	
44800210	MICRO-SURFACING, 2 PASSES, TYPE 2	SQ YD	78100			78100
48101200	AGGREGATE SHOULDERS, TYPE B	TON	152	85	67	
67100100	MOBILIZATION	L SUM	1	0.3	0.3	0.4
70100450	TRAFFIC CONTROL AND PROTECTION, STANDARD 701201	L SUM	1	0.3	0.3	0.4
70100460	TRAFFIC CONTROL AND PROTECTION, STANDARD 701306	L SUM	1	0.3	0.3	0.4
70300100	SHORT- TERM PAVEMENT MARKING	FOOT	5628	1374	1058	3196
70300220	TEMPORARY PAVEMENT MARKING, LINE 4"	FOOT	71894	14715	11620	45559
70301000	WORK ZONE PAVEMENT MARKING REMOVAL	SQ FT	25583	5309	4184	16090
78001110	PAINT PAVEMENT MARKING - LINE 4"	FOOT	71894	14715	11620	45559
78100100	RAISED REFLECTIVE PAVEMENT MARKERS	EACH	200			200
78300200	RAISED REFLECTIVE PAVEMENT MARKER REMOVAL	EACH	200			200

# PAVEMENT MARKING SCHEDULE

P.A. NO.	SECTION	COUNTY	TOTAL SHEETS	SHEET NO.
1	**	***	10	5
STA.		TO STA.		
FED. ROAD DIST. NO.		ALWAYS	FED. AID PROJECT	

- OLD IL 13/ IL 127
- PAVEMENT PRESERVATION FY 06
- GALLATIN AND PERRY COUNTIES

STATION TO STATION				PAINT PAVEMENT MARKING			TEMPORARY	NOTES
				4 INCH WHITE	4 INCH YELLOW	4 INCH SKIP-DASH YELLOW	4 INCH	
				FOOT	FOOT	FOOT	FOOT	
<b>OLD IL 13 - LOCATION 1 (OLD SHAWNEETOWN)</b> Station 2234+78 To Sta. 2303+00								
LEFT	2234+78.0	TO	2246+71.0	953.0			953.0	Edgeline
				Eq. Sta. 2246+71.0 (Bk.) = Sta. 2247+33.0 (Ah.)				
LEFT	2247+33.0	TO	2303+00	5,312.0			5,312.0	Edgeline
RIGHT	2234+78.0	TO	2246+71.0	1,193.0			1,193.0	Edgeline
				Eq. Sta. 2246+71.0 (Bk.) = Sta. 2247+33.0 (Ah.)				
RIGHT	2247+33.0	TO	2303+00.0	5,567.0			5,567.0	Edgeline
	2234+78.0	TO	2246+71.0			298.0	298.0	
				Eq. Sta. 2246+71.0 (Bk.) = Sta. 2247+33.0 (Ah.)				
	2247+33.0	TO	2303+00.0			1,392.0	1,392.0	
Subtotals for Location 1				13,025.0	0.0	1,690.0	14,715.0	
<b>OLD IL 13 - LOCATION 2 (JUNCTION)</b> Station 1957+20 To Sta. 2012+00								
LEFT	1957+20.0	TO	1976+95.0	1,892.0			1,892.0	Edgeline
LEFT	1978+02.0	TO	1989+53.0	1,151.0			1,151.0	Edgeline
LEFT	1990+47.0	TO	2012+00.0	2,065.0			2,065.0	Edgeline
RIGHT	1957+20.0	TO	1976+95.0	1,975.0			1,975.0	Edgeline
RIGHT	1978+02.0	TO	1989+53.0	1,151.0			1,151.0	Edgeline
RIGHT	1990+47.0	TO	2012+00.0	2,065.0			2,065.0	Edgeline
	1957+20.0	TO	1976+95.0		494.0		494.0	
	1978+02.0	TO	1989+53.0		288.0		288.0	
	1990+47.0	TO	2012+00.0		539.0		539.0	
Subtotals for Location 2				10,299.0	0.0		11,620.0	
<b>IL 127 - LOCATION 3 (PINCKNEYVILLE)</b> Station 30+25 To Station 190+00								
	30+25.0	TO	40+98.0	2,146.0			2,146	EDGE LINE
	30+25.0	TO	65+68.0			886	886	
S.N. 073-002	40+98.0	TO	41+33.0	70.0			70	EDGE LINE
	41+33.0	TO	142+03.0	20,140.0			20,140	EDGE LINE
	67+95.0	TO	142+03.0		1,852		1,852	
	142+03.0	TO	144+40.0	474.0			474	EDGE LINE
	144+40.0	TO	190+00.0	9,120.0	1,140		10,260	EDGE LINE
RIGHT	48+68.0	TO	56+60.0		792.0		792	NP ZONE
RIGHT	65+68.0	TO	77+45.0		1,177.0		1,177	NP ZONE
RIGHT	88+91.0	TO	95+30.0		639.0		639	NP ZONE
RIGHT	131+36.0	TO	144+40.0		1304.0		1304	NP ZONE
RIGHT	155+49.0	TO	162+09.0		660.0		660	NP ZONE
RIGHT	179+62.0	TO	188+17.0		855.0		855	NP ZONE
LEFT	58+87.0	TO	67+95.0		908.0		908.0	NP ZONE
LEFT	77+45.0	TO	87+17.0		972.0		972.0	NP ZONE
LEFT	99+74.0	TO	104+92.0		518.0		518.0	NP ZONE
LEFT	142+03.0	TO	155+07.0		1,304.0		1,304.0	NP ZONE
LEFT	166+11.0	TO	172+13.0		602		602.0	NP ZONE
Subtotals for Location 3				31,950	9,731	3,878	45,559	
SUB-TOTALS				55,274	9,731	6,889	71,894	
TOTALS					71,894		71,894	

IL. RTE.	SECTION	COUNTY	TOTAL SHEETS	SHEET NO.
*	**	***	10	6
STA.		TO STA.		
FED. ROAD DIST. NO.	ILENDR	FED. AID PROJECT		

•OLD IL 13/ IL 127  
 \*\*PAVEMENT PRESERVATION FY 06  
 \*\*\*GALLATIN AND PERRY COUNTIES

### RESURFACING SCHEDULE

LOCATION - STATION TO STATION	LENGTH	ROADWAY WIDTH	ROADWAY AREA	SHOULDER WIDTH	BIT. SURF. TREAT. (PREV. MAINT.)	LEVEL BINDER (MM), TY. 1 (SPL.) (3/4")	CAPE SEAL	BIT. MATLS. (PR. CT.) SPECIAL	AGG. SHOULDER TYPE B	MICRO-SURF., 2 PASSES, TY. 2	MICRO-SURF., 2 PASSES, TY. 2 (SEE NOTE 1)	BIT. MATLS. (PR. CT.)	PAV'T. GRINDING	FIBER- ASPHALT	
	FOR INFORMATIONAL PURPOSE ONLY														
	(FT)	(FT)	(SQ YD)												(FT)
<b>LOCATION 1 - OLD IL 13 AT OLD SHAWNEETOWN</b>															
2234+78 TO 2246+71	1193.0	18.0	2386	2.0			2386	215	15					441	
2247+33 TO 2303+00	5567.0	18.0	11134	2.0			11,134	1002	70					2,062	
<b>SUBTOTAL OLD SHAWNEETOWN</b>						0	0	13,520	1217	85	0	0	0	2,503	
<b>LOCATION 2 - OLD IL 13 AT JUNCTION</b>															
1957+20 TO 1976+95	1975.0	20.0	4389	2.0	4389	187		395	25					731	
1976+95 TO 1978+02							S. N. 030-0014 - BRIDGE OMISSION (CYPRESS DITCH)								
1978+02 TO 1989+53	1151.0	20.0	2558	2.0	2558	109		230	15					427	
1990+47 TO 2012+00	2153.0	20.0	4784	2.0	4784	204		431	27					798	
1957+20 TO 2012+00													178.0		
<b>SUBTOTAL JUNCTION</b>						11,731	501	0	1056	67	0	0	0	1,956	
<b>LOCATION 3 - IL 127 NORTH OF PINCKNEYVILLE</b>															
30+25 TO 40+98	1073.0	24.0	2861	10.0						2861	2384	472		387	
S. N. 073-0021 40+98 TO 41+33	35.0	24.0	93	10.0						93	78	16		13	
41+33 TO 190+00	14,867.0	24.0	39,645	10.0						39,646	33,038	6541		5,506	
<b>SUBTOTAL PINCKNEYVILLE</b>						0	0	0	0	0	42,600	35,500	7029	0	5,906
<b>TOTALS</b>						11,731	501	13,520	2273	152	42,600	35,500	7029	178	10,365

NOTE 1. THIS QUANTITY TO BE USED ON THE EXISTING BITUMINOUS SHOULDERS.

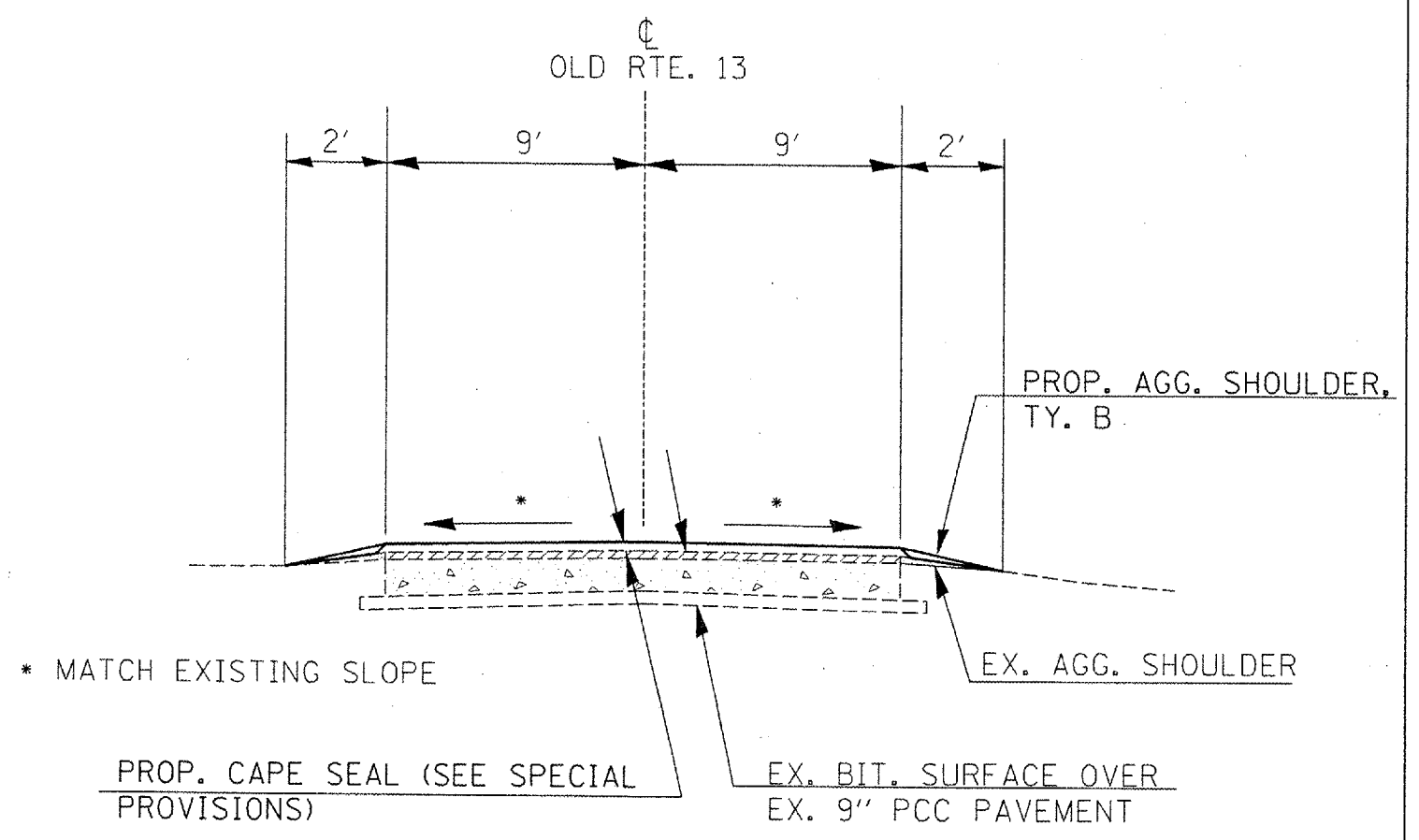
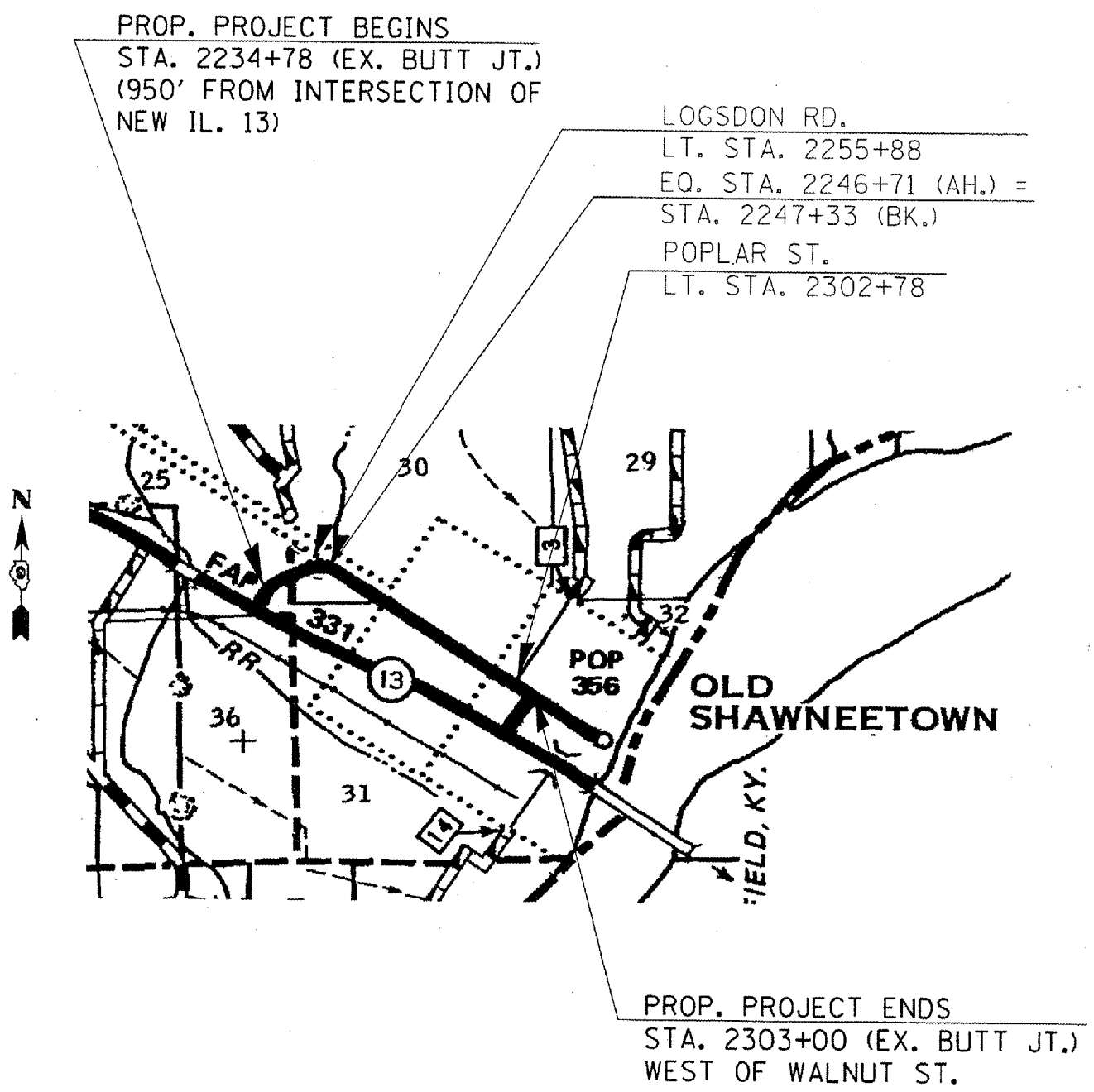
### SIDE ROADS AND ENTRANCES LOCATION 2 - JUNCTION

STATION OR AMOUNT	NAME	SURFACE TYPE	WIDTH AT EDGE OF PAVEMENT	DISTANCE AT END OF SURFACING	WIDTH AT END OF SURFACING	SURFACE AREA	BIT. SURFACE TREATMENT - PM	LEVEL BINDER (MM) T1 (SPL)	BIT. MATLS. (PR. CT.) SPECIAL
			(FT)	(FT)	(FT)	(SQ YD)	(SQ YD)	(TON)	(GAL)
<b>LOCATION 2 - JUNCTION</b>									
LT. 1970+03	TEXACO LN.	BITUMINOUS	83	4	69	34	34	1.4	3.1
RT. 1993+50	SCHOOL ST.	BITUMINOUS	88	4	73	36	36	1.5	3.2
LT. 2009+76	NEW MARKET RD.	BITUMINOUS	88	4	70	35	35	1.5	3.2
4	PRIVATE ENTRANCE	AGGREGATE	16	4	12	28	28	1.1	2.5
<b>TOTALS:</b>							133	5.5	12•

P.L.A. NO.	SECTION	COUNTY	TOTAL SHEETS	SHEET NO.
*	**	***	10	7
STA.		TO STA.		
FED. AID DIST. NO.		ALWAYS	FED. AID PROJECT	

•OLD IL 13/ IL 127  
 ••PAVEMENT PRESERVATION FY 06  
 •••GALLATIN AND PERRY COUNTIES

LOCATION 1 MAP AND TYPICAL SECTION  
 OLD RTE 13 AT OLD SHAWNEETOWN  
 STA. 2234+78 TO STA. 2303+00



TO BE USED:  
 STA. 2234+78 TO STA. 2303+00



P.L. NO.	SECTION	COUNTY	TOTAL SHEETS	SHEET NO.
*	**	***	10	6
STA.	TO STA.			
FED. ROAD DIST. NO.	ALMOS	FED. AID PROJECT		

•OLD IL 13/ IL 127  
 \*\*PAVEMENT PRESERVATION FY 06  
 \*\*\*GALLATIN AND PERRY COUNTIES

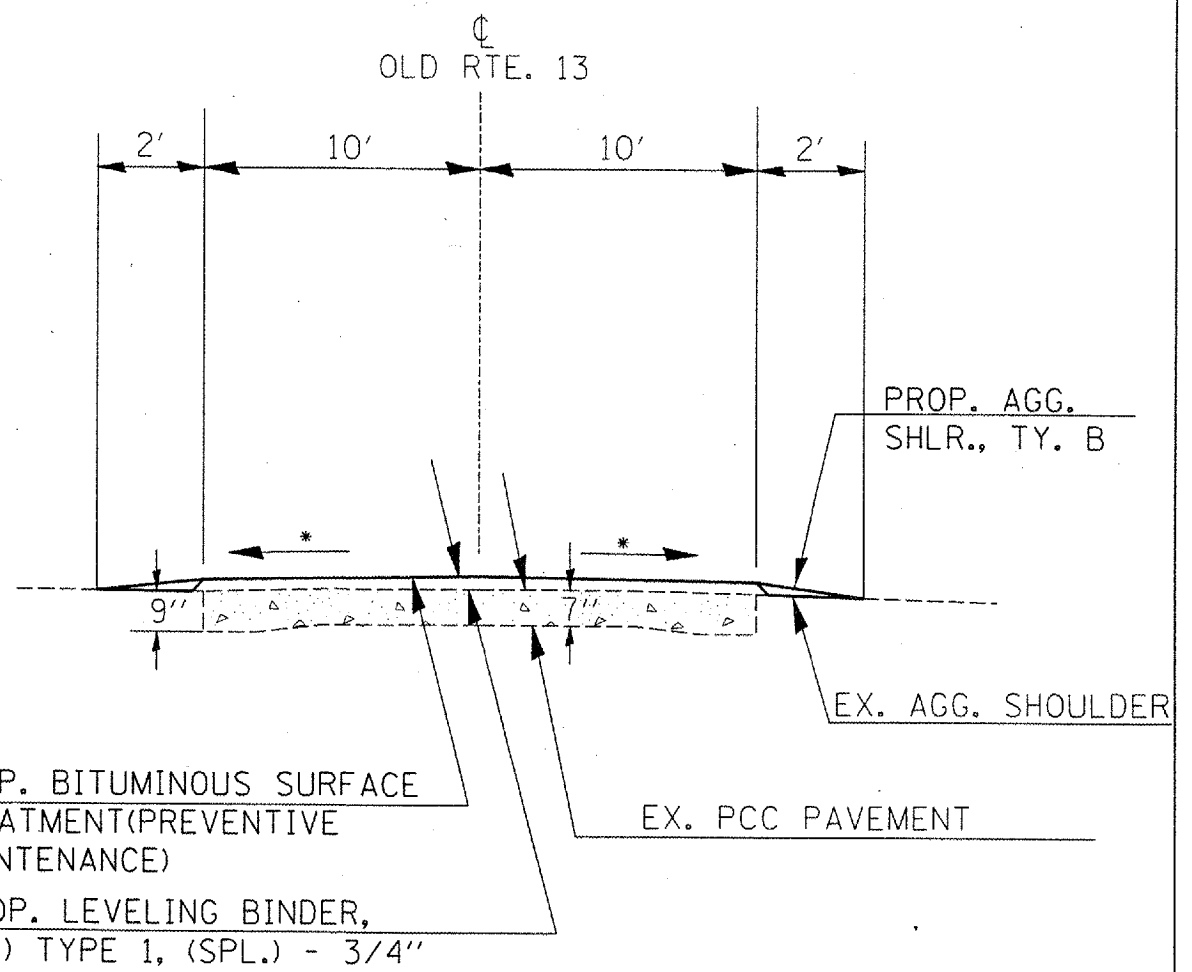
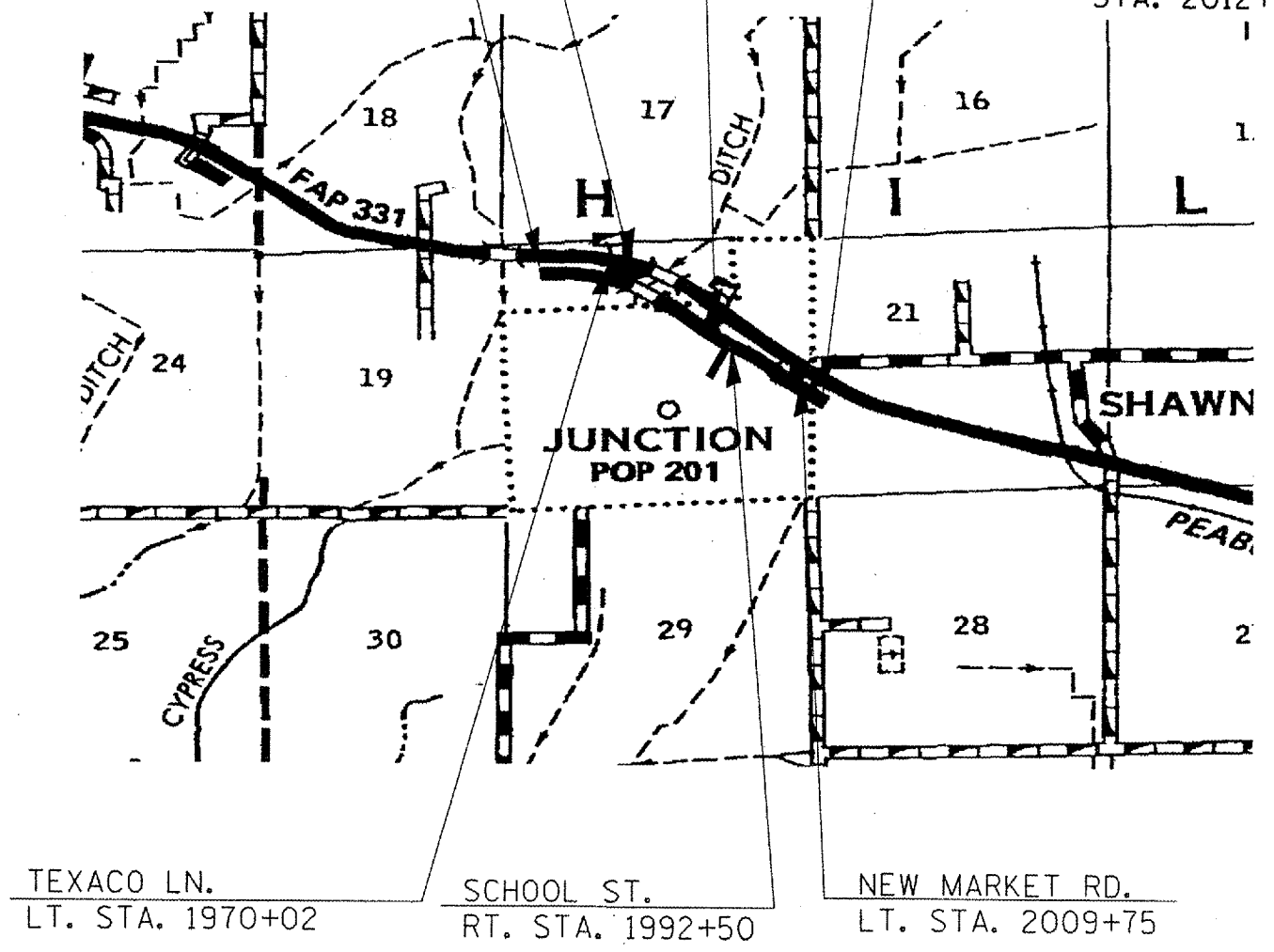
LOCATION 2 MAP AND TYPICAL SECTION  
 OLD RTE. 13 AT JUNCTION  
 STA. 1957+20 TO STA. 2012+00

OMIT EXIST. STR. 030-0014  
 STA. 1976+95.2 TO STA. 1978+01.8

PROP. PROJECT BEGINS  
 STA. 1957+20

OMIT EXIST. INTERSECTION AT  
 JUNCTION RD.  
 STA. 1989+53 TO STA. 1990+47  
 (INTERSECTION EQ. STA. 5+42.06 (JUNCTION RD.) =  
 STA. 1990+00.65 (OLD IL. 13)

PROP. PROJECT ENDS  
 STA. 2012+00



TO BE USED:  
 STA. 1957+20 TO STA. 1976+95.2 (W. ABUT.)  
 STA. 1978+01.8 (E. ABUT.) TO STA. 1989+53  
 STA. 1990+47 TO STA. 2012+00

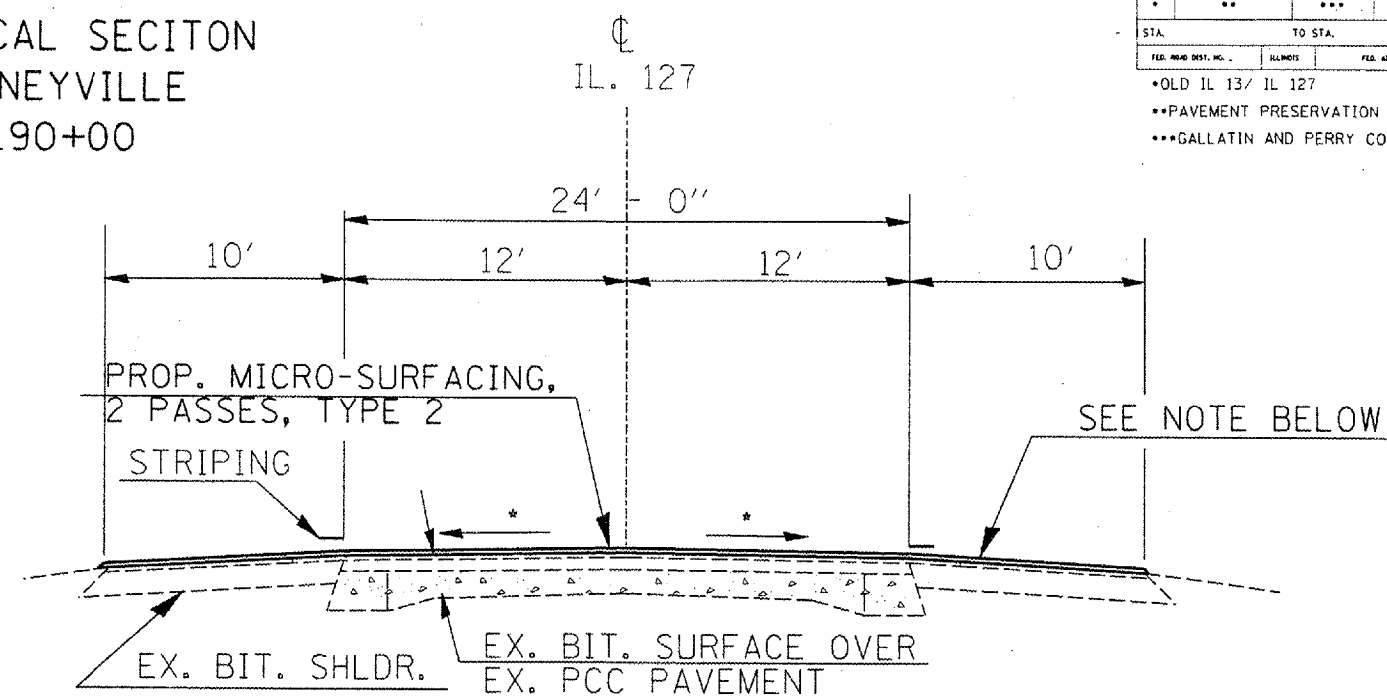
\* MATCH EXISTING SLOPE



SECTION	COUNTY	TOTAL SHEETS	SHEET NO.
**	***	10	9

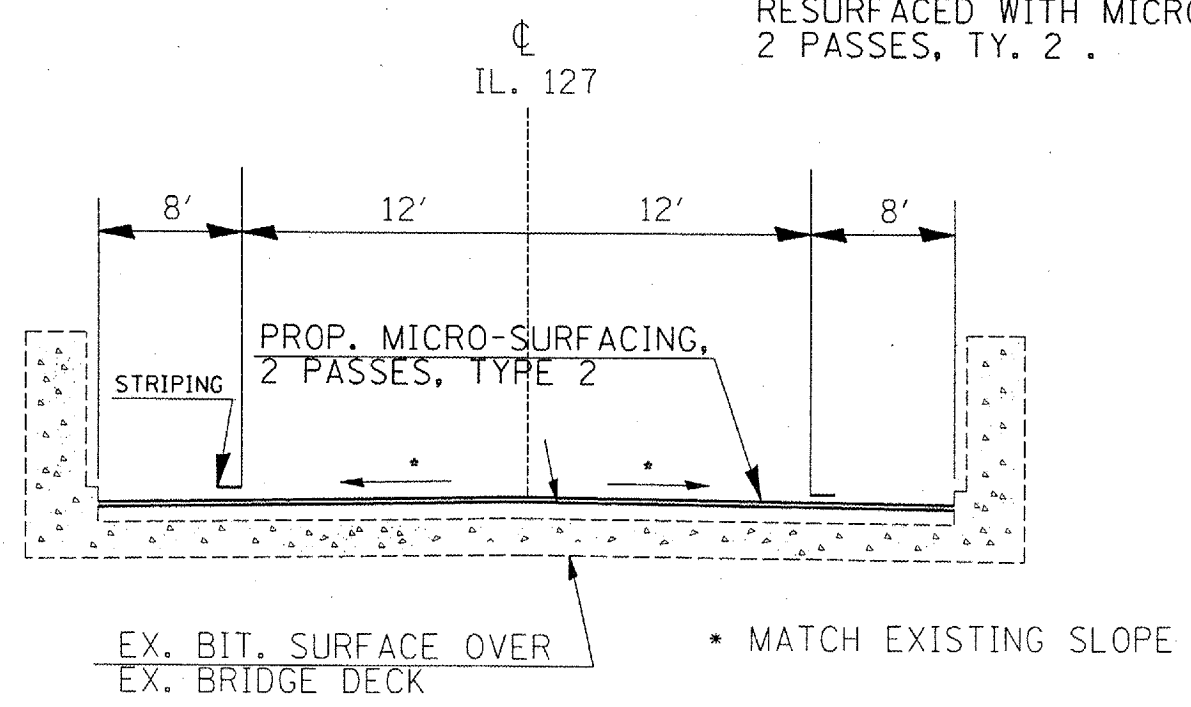
LOCATION 3 MAP AND TYPICAL SECITON  
 IL. 127 NORTH OF PINCKNEYVILLE  
 STA. 30+25 TO STA. 190+00

STA. TO STA.  
 FED. ROAD DIST. NO. ILLINOIS FED. AID PROJECT  
 \*OLD IL 13/ IL 127  
 \*\*PAVEMENT PRESERVATION FY 06  
 \*\*\*GALLATIN AND PERRY COUNTIES



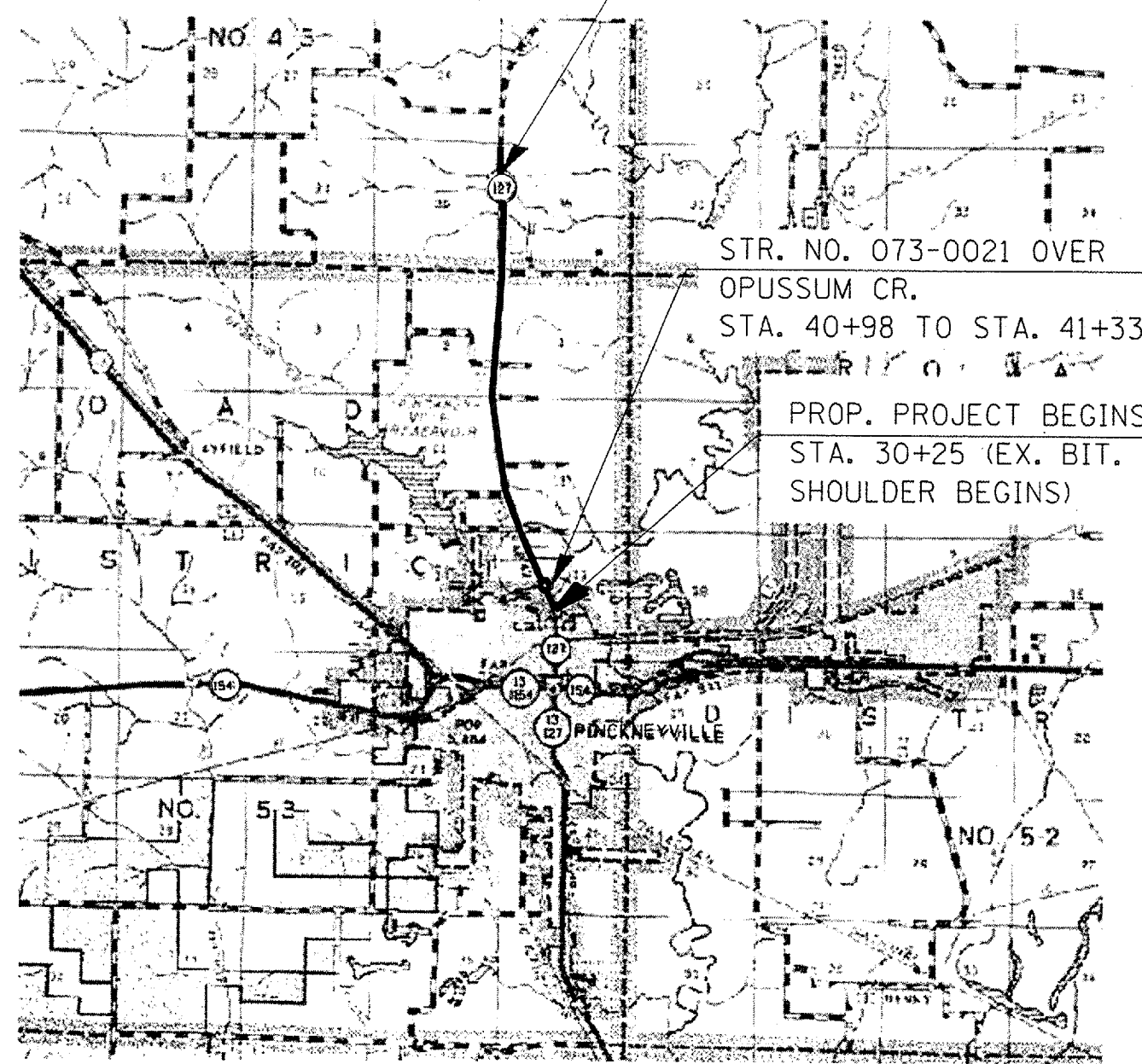
TO BE USED:  
 STA. 30+25 TO STA. 40+98  
 STA. 41+33 TO STA. 190+00

NOTE: EX. BIT. SHOULDERS TO BE RESURFACED WITH MICRO-SURF., 2 PASSES, TY. 2 .



TO BE USED:  
 STA. 40+98 TO STA. 41+33

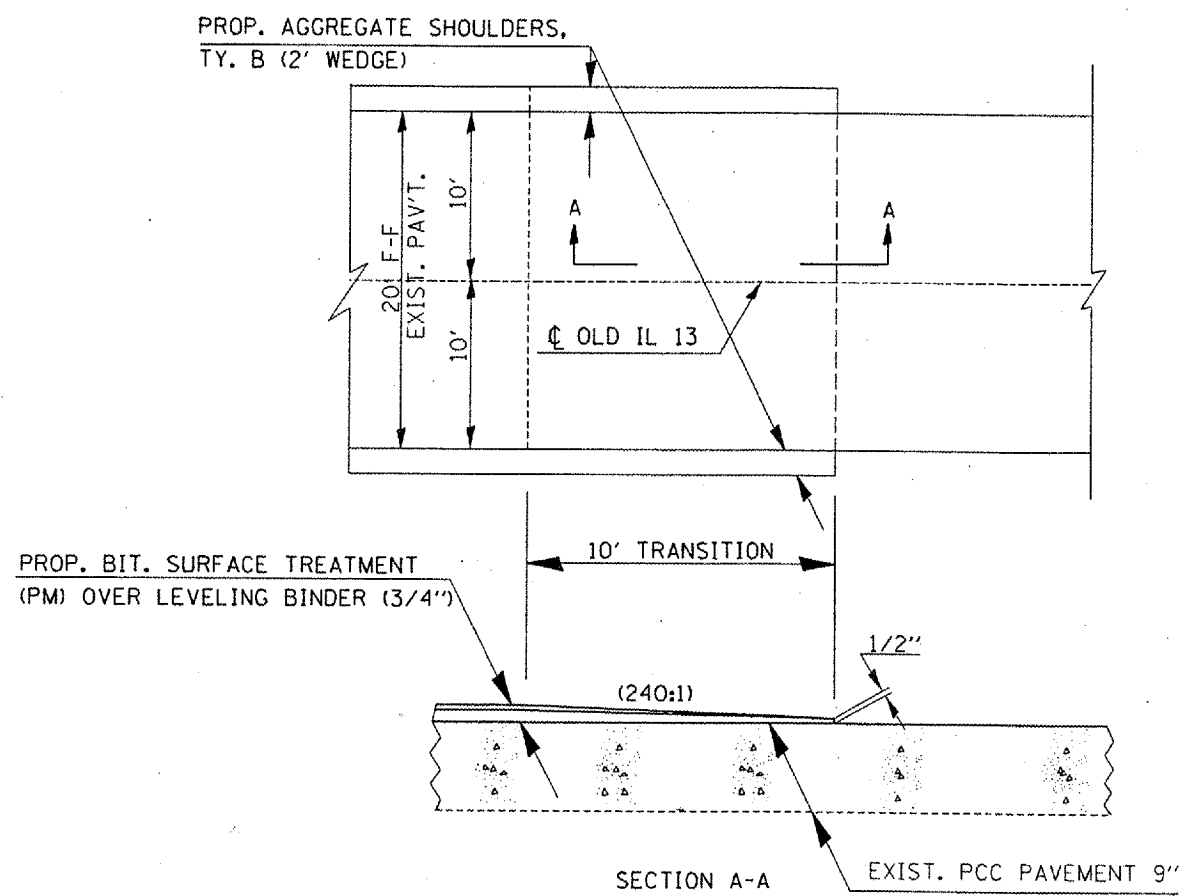
PROP. PROJECT ENDS  
 STA. 190+00



IL. RTE.	SECTION	COUNTY	TOTAL SHEETS	SHEET NO.
..	..	...	10	10
STA. _____		TO STA. _____		
FED. ROAD DIST. NO. _____ ILLINOIS FED. AID PROJECT				

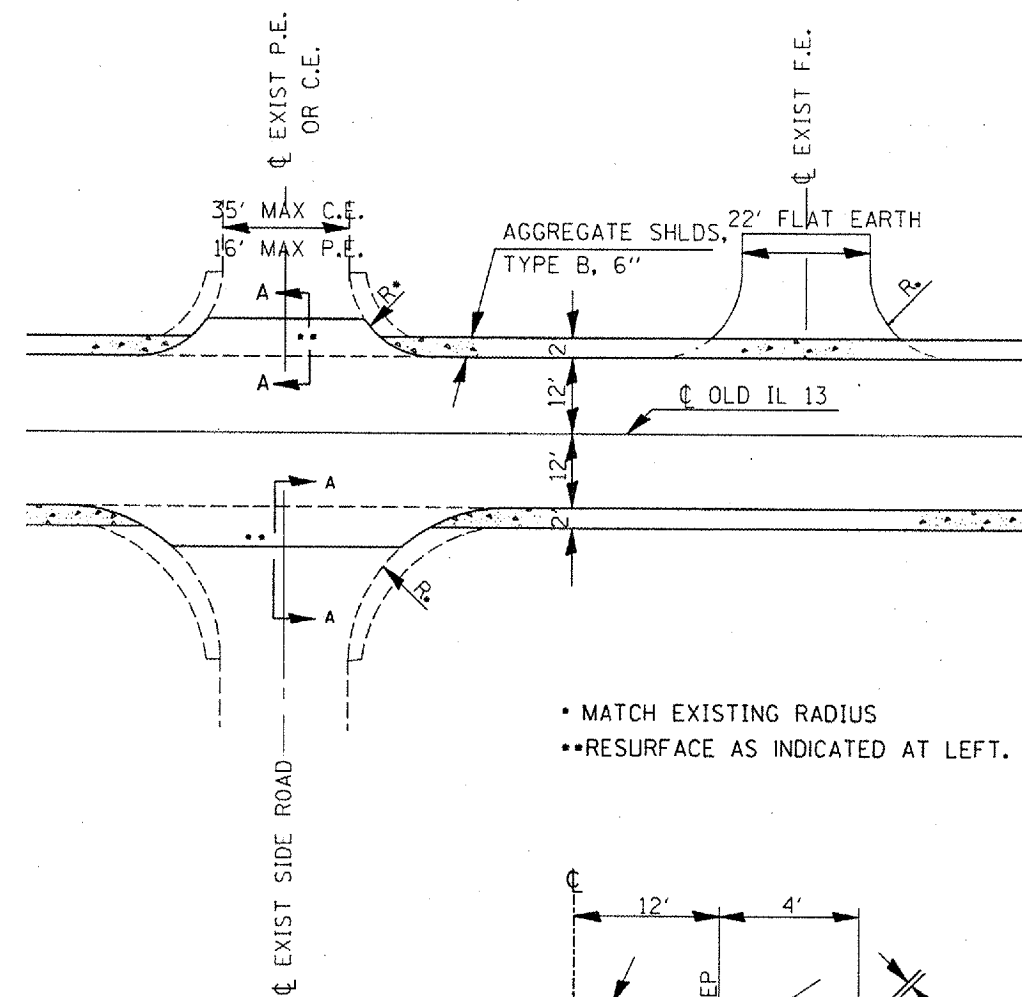
•OLD IL 13/ IL 127  
 ••PAVEMENT PRESERVATION FY 06  
 •••GALLATIN AND PERRY COUNTIES

### BITUMINOUS TRANSITION DETAIL



TO BE USED:  
 LOCATION 2 - JUNCTION  
 STA. 1957+20  
 STA. 1976+95.2 (W. ABUT.)  
 STA. 1978+01.8 (E. ABUT.)  
 STA. 1989+53 (W. OF INTERSECTION)  
 STA. 1990+47 (E. OF INTERSECTION)  
 STA. 2012+00

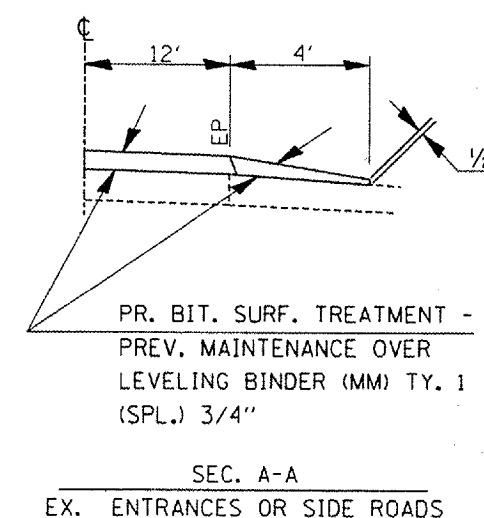
### SIDE ROAD AND ENTRANCE DETAILS LOCATION 2 AT JUNCTION



- MATCH EXISTING RADIUS
- RESURFACE AS INDICATED AT LEFT.

ENTRANCE SCHEDULE

TYPE	NUMBER OF ENTRANCES
P.E.	3
C.E.	0
S.R.	3



DETAILS: SIDE ROAD AND ENTRANCE AT LOCATION 2 - JUNCTION;  
 TRANSITIONS AT BEGIN , END AND S.N. 030-0014 AT LOCATION 2.