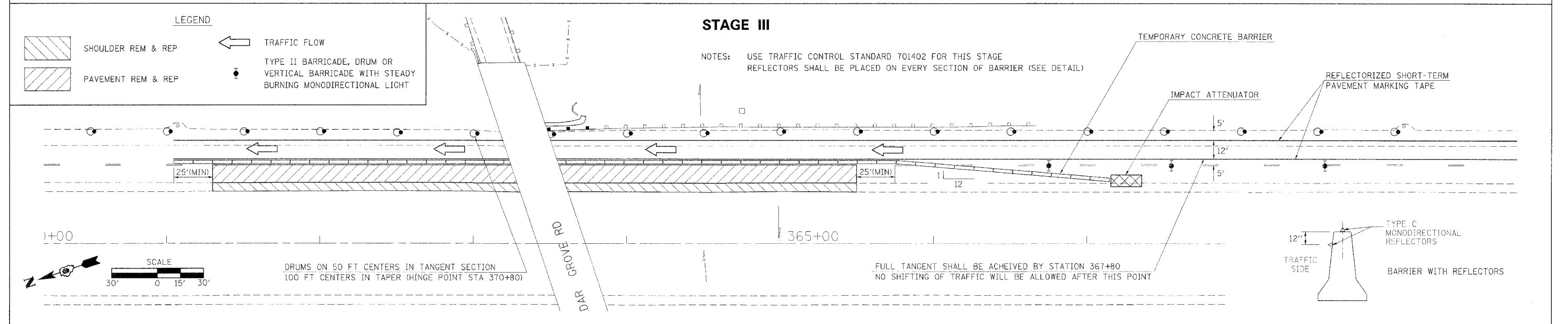
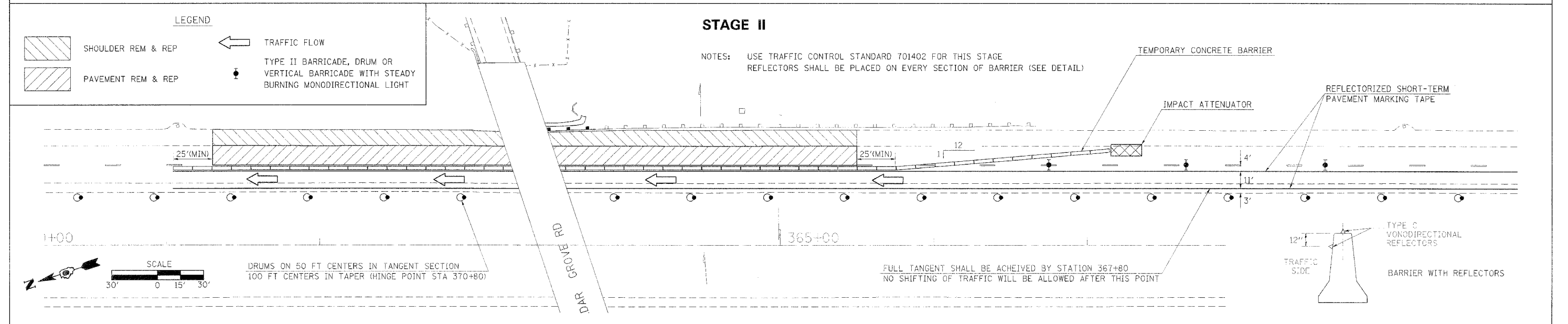
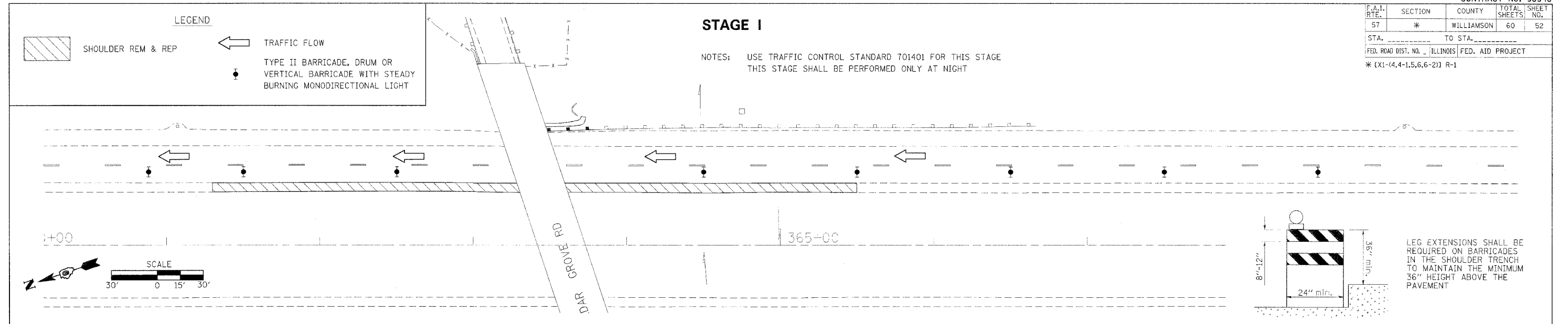


F.A.I. RTE.	SECTION	COUNTY	TOTAL SHEETS	SHEET NO.
57	*	WILLIAMSON	60	52
STA. _____		TO STA. _____		
FED. ROAD DIST. NO. [ILLINOIS] FED. AID PROJECT				
* [X1-(4,4-1,5,6,6-2)] R-1				



STAGING PLAN - FAU 9624 (CEDAR GROVE RD) OVERPASS - STA 360+50 TO 364+50

PLOT DATE = 4/17/2006
PLOT SCALE = 30.0000' = 1" IN.
USER NAME = thomeahf