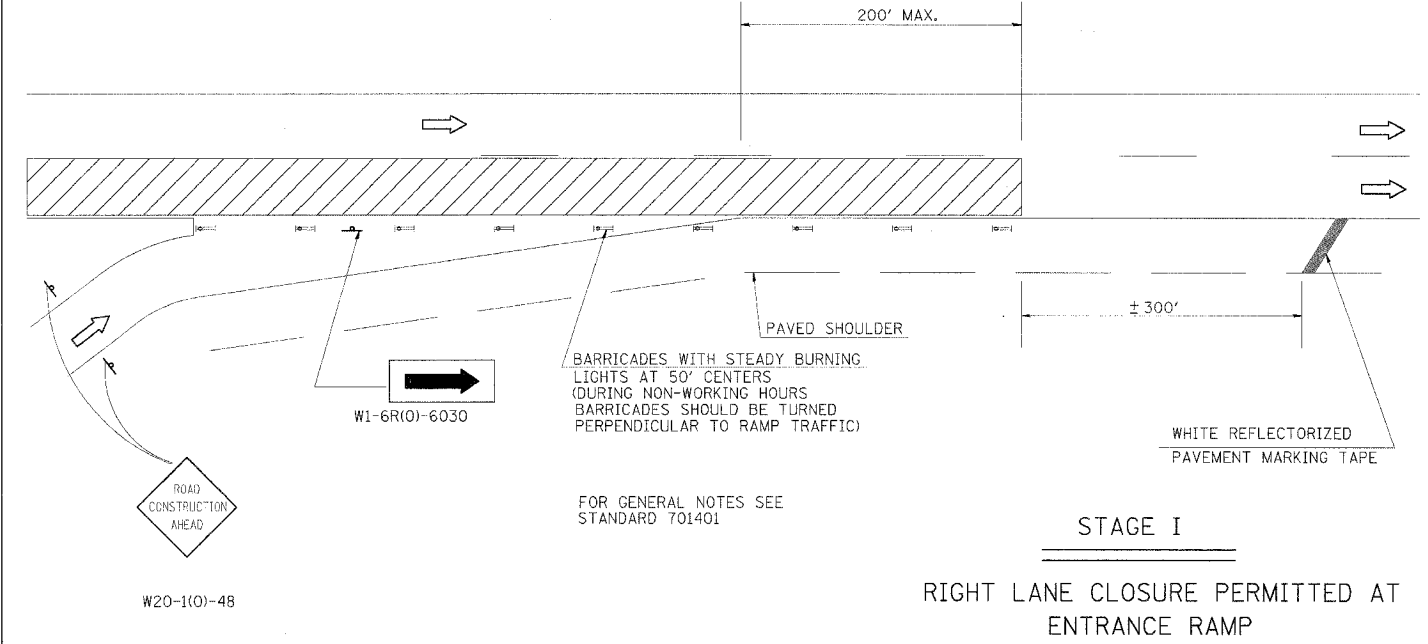


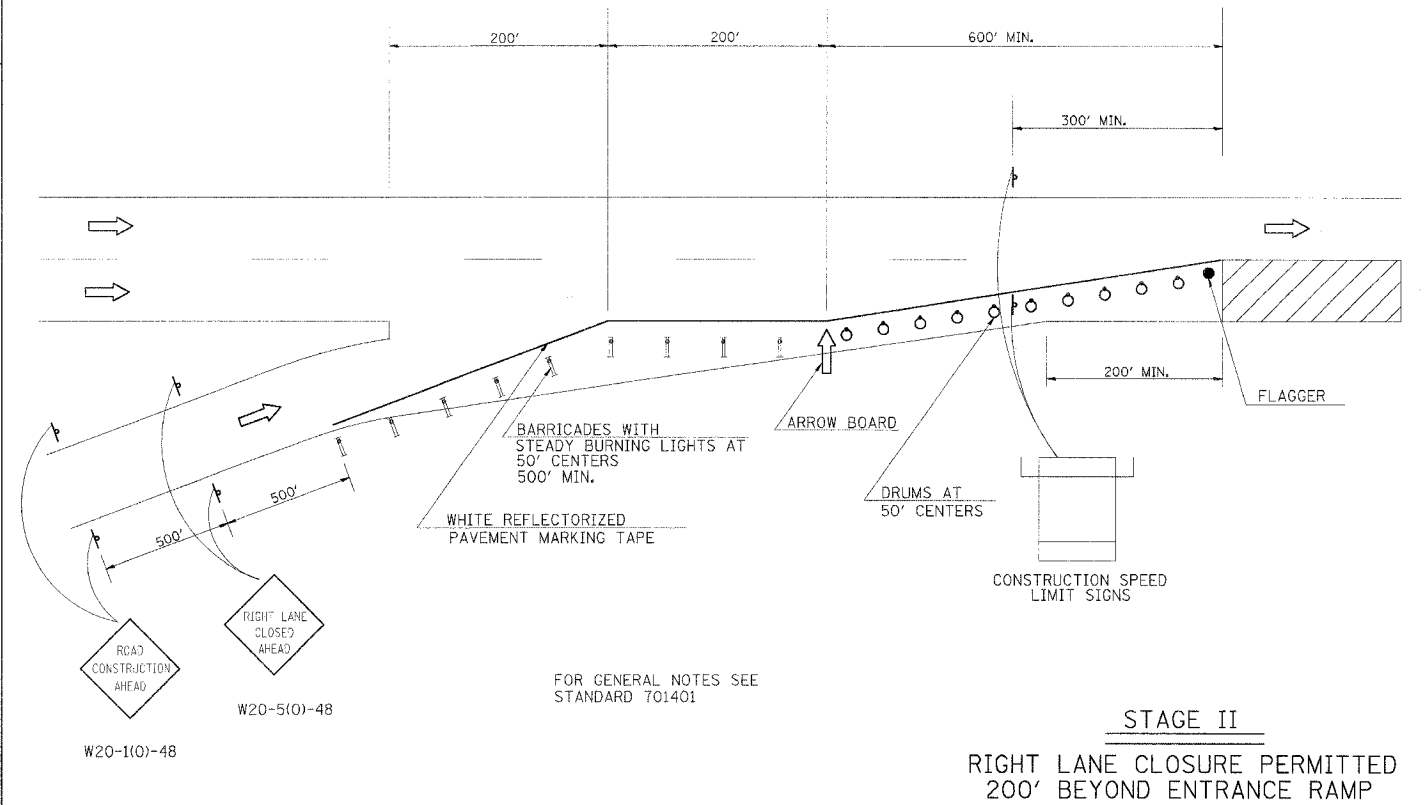
F.A.I. RTE.	SECTION	COUNTY	TOTAL SHEETS	SHEET NO.
57	*	WILLIAMSON	60	56
STA. TO STA.				
FED. ROAD DIST. NO. ILLINOIS FED. AID PROJECT				
* [X1-14,4-1,5,6,6-2] R-1				

DETAIL OF TRAFFIC CONTROL AT ENTRANCE RAMP



FOR GENERAL NOTES SEE STANDARD 701401

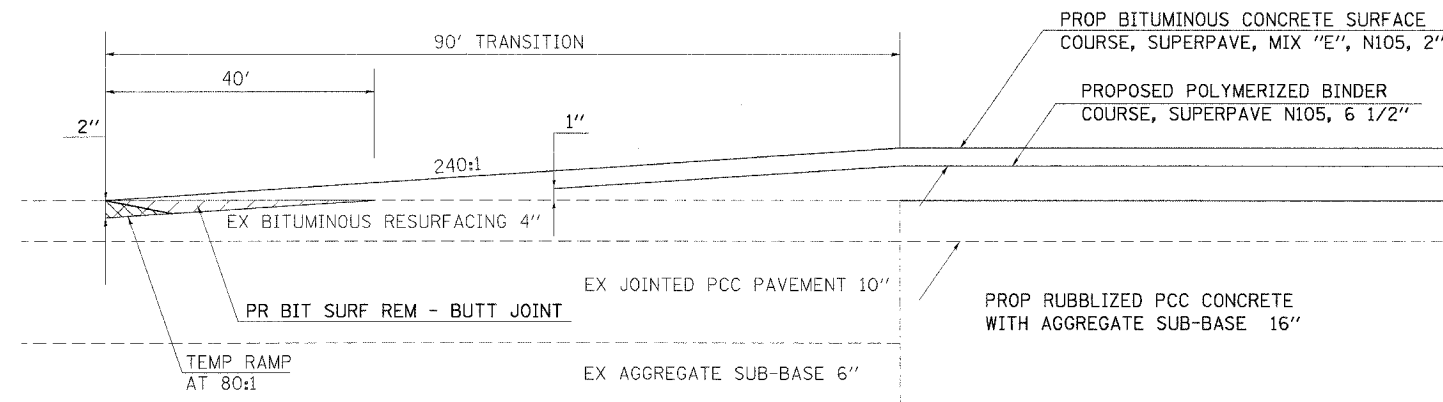
STAGE I
RIGHT LANE CLOSURE PERMITTED AT ENTRANCE RAMP



FOR GENERAL NOTES SEE STANDARD 701401

STAGE II
RIGHT LANE CLOSURE PERMITTED 200' BEYOND ENTRANCE RAMP

BUTT-JOINT (I-57 NORTHBOUND)



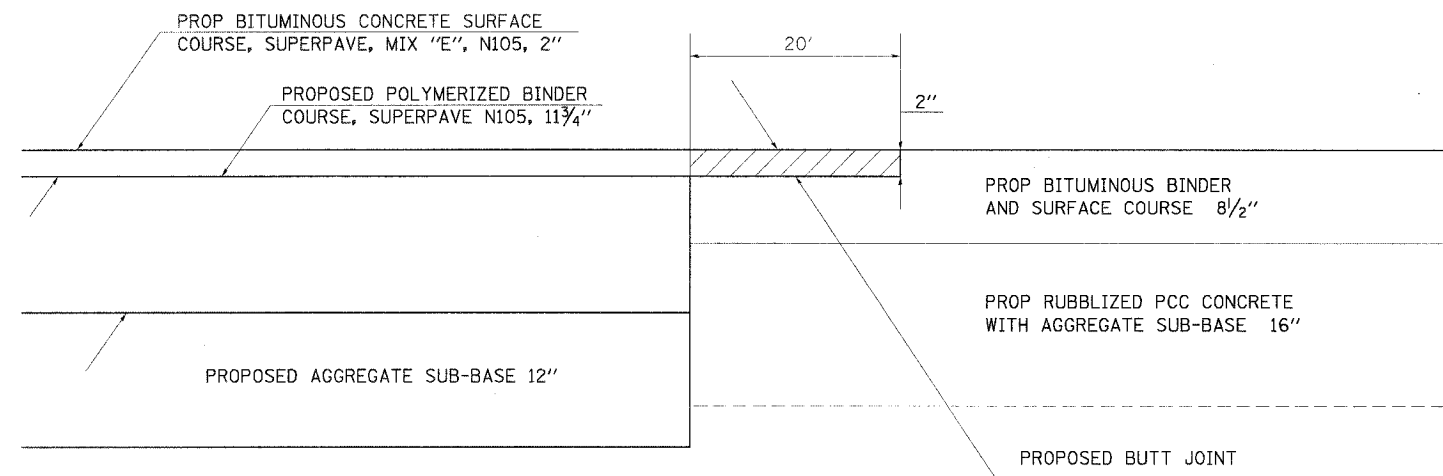
TO BE USED:

STATIONS	
79+50 TO 80+40	82+80 TO 83+70
163+40 TO 164+30	
226+30 TO 227+20	230+60 TO 231+50
253+10 TO 254+00	256+35 TO 257+25
361+50 TO 362+40	364+40 TO 365+30

NOTE:

AT THE BUTT JOINT LOCATIONS INDICATED, SIMILAR BUTT JOINTS SHALL BE CONSTRUCTED IN THE ADJACENT EXISTING BITUMINOUS SHOULDERS. THIS WORK SHALL BE PAID FOR AS BITUMINOUS SURFACE REMOVAL - BUTT JOINT.

BUTT-JOINT (I-57 NORTHBOUND)



TO BE USED:

STATIONS	
79+30 TO 79+50	83+70 TO 83+90
163+20 TO 163+40	166+10 TO 168+30*
226+10 TO 226+30	231+50 TO 231+70
252+90 TO 253+10	257+25 TO 257+45
361+30 TO 361+50	365+30 TO 365+50

* A SIMILAR BUTT JOINT SHALL BE CONSTRUCTED AT THIS LOCATION. HOWEVER, THE JOINT WILL TIE INTO EXISTING NON-RUBBLIZED PAVEMENT.

PLOT DATE = 5/25/2006
 PLOT SCALE = 1/8"=1'-0"
 USER NAME = shgandrd

REVISIONS	
DRAWN 6-23-89	
DRAWN 12-17-01	

STD 9-43