

06-16-2023 LETTING ITEM 009

STATE OF ILLINOIS
DEPARTMENT OF TRANSPORTATION

F.A.U. ROUTE	SECTION	COUNTY	TOTAL SHEETS	SHEET NO.
0282	22-00077-00-RS	WILL	20	1

CONTRACT NO. 61J62

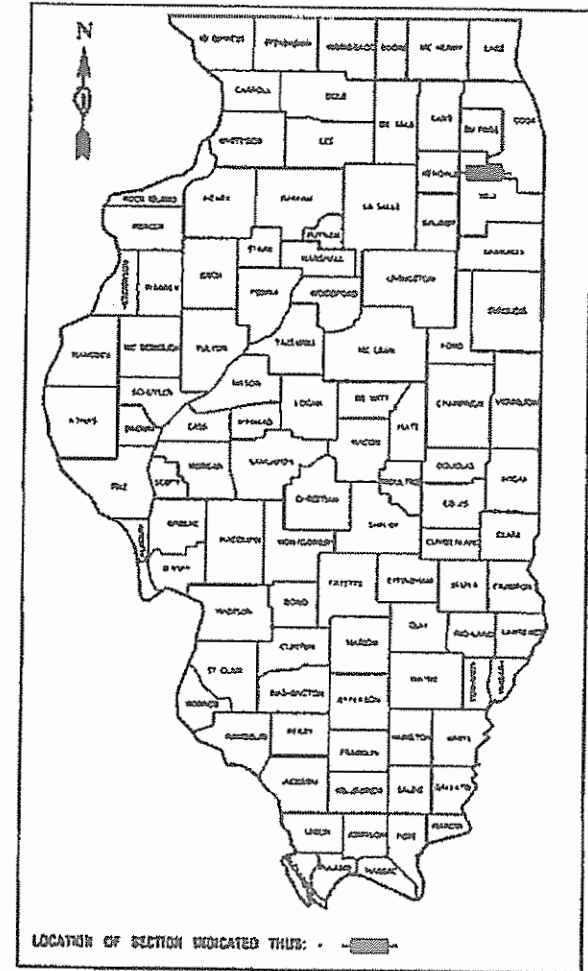
PLANS FOR PROPOSED FEDERAL AID HIGHWAY

FAU ROUTE 0282 (135TH STREET)
CHICAGO SHIP AND SANITARY CANAL BRIDGE
TO NEW AVENUE
ROADWAY RESURFACING
SECTION NO.: 22-00077-00-RS
PROJECT NO.: E1DI(653)
VILLAGE of ROMEOVILLE
WILL COUNTY
JOB NO.: C91-042-23

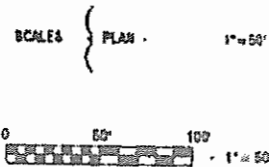
FOR INDEX OF SHEETS, SEE SHEET NO. 2

FOR HIGHWAY STANDARDS, SEE SHEET NO. 2

135TH STREET CHICAGO SHIP AND SANITARY CANAL BRIDGE TO NEW AVENUE	
2019 ADT-	18,600
POSTED SPEED LIMIT-	40 MPH
FUNCTIONAL CLASSIFICATION-	MINOR ARTERIAL



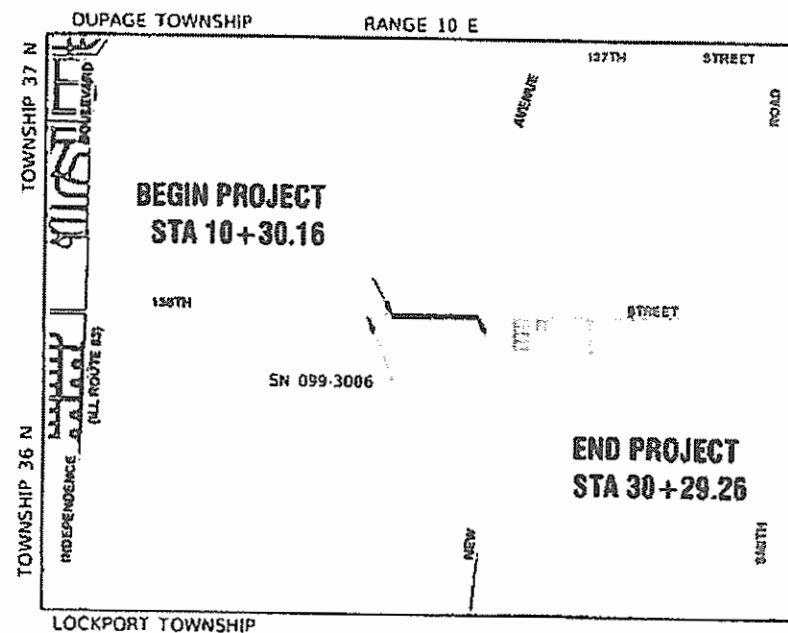
I.D.O.T. FEDERAL AID PROGRAM ENGINEER: CARMEN RAMOS, PE, SCHAMBURG, IL
CONSULTANTS ROBINSON ENGINEERING, LTD 708 331 6700



FULL SIZE PLANS HAVE BEEN PREPARED USING STANDARD ENGINEERING SCALES, REDUCED SIZED PLANS WILL NOT CONFORM TO STANDARD SCALES, IN MAKING MEASUREMENTS ON REDUCED PLANS, THE ABOVE SCALES MAY BE USED.

J. U. L. I. E.
JOINT UTILITY LOCATION INFORMATION FOR EXCAVATION
1-800-892-0123
QR 811

VILLAGE OF ROMEOVILLE



LOCATION MAP
NOT TO SCALE

GROSS AND NET LENGTH = 1 999.1 FEET = 0.36 MILES



WILLIAM P. DOLAN
LICENSE EXPIRES 12/31/23
3-3-23

STATE OF ILLINOIS DEPARTMENT OF TRANSPORTATION	
APPROVED	3-3-23
<i>[Signature]</i>	
VILLAGE OF ROMEOVILLE MAYOR	
PASSED	APRIL 6, 2023
<i>[Signature]</i>	
DISTRICT 1 ENGINEER OF LOCAL ROADS & STREETS	
RELEASING FOR BID BASED ON LIMITED REVIEW	APRIL 7, 2023
<i>[Signature]</i>	
REGIONAL ENGINEER	

PRINTED BY THE AUTHORITY OF
THE STATE OF ILLINOIS

INDEX OF SHEETS

1	COVER SHEET
2	INDEX OF SHEETS, HIGHWAY STANDARDS AND GENERAL NOTES
3-5	SUMMARY OF QUANTITIES
6	TYPICAL CROSS SECTIONS
7	ALIGNMENT AND TIES
8-9	PROPOSED IMPROVEMENT
10	PAVEMENT MARKING PLAN
11	WOLVERINE PIPE LINE CURB CROSSING DETAIL
12-20	IDOT DISTRICT 1 STANDARDS

HIGHWAY STANDARDS

000001-08	STANDARD SYMBOLS, ABBREVIATIONS AND PATTERNS
424001-11	PERPENDICULAR CURB RAMPS FOR SIDEWALKS
442201-03	CLASS C AND D PATCHES
606001-08	CONCRETE CURB TYPE B AND COMBINATION CONCRETE CURB AND GUTTER
701001-02	OFF ROAD OPERATIONS, 2L, 2W, MORE THAN 15'(4.5m) AWAY
701006-05	OFF ROAD OPERATIONS, 2L, 2W, 15'(4.5m) TO 24"(600mm) FROM PAVEMENT EDGE
701011-04	OFF ROAD MOVING OPERATIONS, 2L,2W, DAY ONLY
701101-05	OFF ROAD OPERATIONS, MULTILANE, 15' (4.5m) TO 24" (600mm) FROM PAVEMENT EDGE
701301-04	LANE CLOSURE, 2L, 2W, SHORT TIME OPERATIONS
701311-03	LANE CLOSURE, 2L, 2W, MOVING OPERATIONS - DAY ONLY
701427-05	LANE CLOSURE, MULTILANE, INTERMITTENT OR MOVING OPERATION FOR SPEEDS ≤ 40 MPH
701606-10	URBAN SINGLE LANE CLOSURE, MULTILANE, 2W WITH MOUNTABLE MEDIAN
701701-10	URBAN LANE CLOSURE, MULTILANE INTERSECTION
701801-06	SIDEWALK CORNER OR CROSSWALK CLOSURE
701901-08	TRAFFIC CONTROL DEVICES
780001-05	TYPICAL PAVEMENT MARKINGS
886001-01	DETECTOR LOOP INSTALLATIONS

DISTRICT ONE DETAILS

BD-22	PAVEMENT PATCHING FOR HMA SURFACED PAVEMENT
BD-32	BUTT JOINTS AND HMA TAPER
TC-10	TRAFFIC CONTROL AND PROTECTION FOR SIDE ROADS, INTERSECTIONS AND DRIVEWAYS
TC-13	DISTRICT ONE TYPICAL PAVEMENT MARKINGS
TC-14	TRAFFIC CONTROL AND PROTECTION AT TURN BAYS (TO REMAIN OPEN TO TRAFFIC)
TC-16	SHORT TERM PAVEMENT MARKING LETTERS AND SYMBOLS
TC-22	ARTERIAL ROAD INFORMATION SIGN
TC-26	DRIVEWAY ENTRANCE SIGNING
TS-07	DETECTOR LOOP INSTALLATION DETAIL FOR ROADWAY RESURFACING

GENERAL NOTES

- ITEMS OF WORK LISTED IN THE SUMMARY OF QUANTITIES NOT SPECIFICALLY CALLED OUT ON THE PLANS SHALL BE PERFORMED AS DIRECTED BY THE ENGINEER.
- THE ROBINSON ENGINEERING, LTD. FIELD OFFICE (708-331-6700), AND THE PUBLIC WORKS DIRECTOR, AT THE VILLAGE OF ROMEOVILLE, SHALL BE NOTIFIED TWO (2) WORKING DAYS BEFORE CONSTRUCTION BEGINS.
- BEFORE STARTING ANY EXCAVATION THE CONTRACTOR SHALL CALL "J.U.L.I.E." AT (800) 892-0123 OR 811 AND (312) 744-7000 FOR FIELD LOCATIONS OF BURIED ELECTRIC, TELEPHONE AND GAS UTILITIES. (48 HOUR NOTIFICATION REQUIRED)
- UTILITIES INDICATED ON THE PLANS ARE PROVIDED FOR THE CONTRACTOR'S USE AND ARE BASED UPON INFORMATION AVAILABLE AT THE TIME OF THE ADVERTISEMENT FOR BIDS. THE OWNER AND ENGINEER DO NOT GUARANTEE THE ACCURACY OF UTILITY INFORMATION.
- IT SHALL BE THE CONTRACTOR'S RESPONSIBILITY TO VERIFY ALL DIMENSIONS AND CONDITIONS EXISTING IN THE FIELD PRIOR TO CONSTRUCTION AND ORDERING OF MATERIALS.
- THE THICKNESS OF HMA MIXTURE STATED IN THE SPECIFICATIONS IS THE NOMINAL THICKNESS. DEVIATIONS FROM THE NOMINAL THICKNESS WILL BE PERMITTED WHEN SUCH DEVIATIONS OCCUR DUE TO IRREGULARITIES IN THE EXISTING SURFACE OR BASE ON WHICH THE HMA SURFACE IS PLACED.
- ANY LOOSE MATERIAL DEPOSITED IN THE FLOW LINE OF DITCHES, GUTTERS OR OTHER DRAINAGE STRUCTURES SHALL BE REMOVED BY THE END OF EACH DAY BY THE CONTRACTOR.
- CLASS D PATCHING QUANTITIES FOR THIS CONTRACT SHALL BE PERFORMED AT THE DIRECTION OF THE ENGINEER AFTER PAVEMENT MILLING. PATCHES WITHIN THE ROADWAY SHALL BE PERFORMED AFTER MILLING.
- CONTRACTOR SHALL TAKE PRECAUTION BY PRESERVING EXISTING TREES WITHIN THE RIGHT OF WAY. IF ANY DAMAGE OCCURS, TREES SHALL BE REPLACED IN KIND PER ARTICLE 201.07 REPAIR OR REPLACEMENT OF EXISTING PLANT MATERIAL REQUIREMENTS STATED HEREIN.
- NO PAVEMENT PATCHING SHALL BE PERMITTED AFTER FRIDAY AT 3:00 PM OF EACH AND EVERY WEEK AND NO HOLES WILL BE ALLOWED TO REMAIN OPEN OVERNIGHT OR OVER THE WEEKEND.
- ALL EQUIPMENT SHALL BE REMOVED OFF THE VILLAGE STREETS DURING ALL HOLIDAY WEEKENDS AS COORDINATED WITH THE VILLAGE.
- HMA PAVING SHALL BE PERFORMED WITH HOT JOINTS.
- THE CONTRACTOR SHALL CONTACT KALPANA KANNAN-HOSADURGA, THE DISTRICT ONE TRAFFIC CONTROL SUPERVISOR, AT KALPANA.KANNAN-HOSADURGA@ILLINOIS.GOV A MINIMUM OF 72 HOURS IN ADVANCE OF BEGINNING WORK.
- ERIC OTERO, DAMAGE PREVENTION SPECIALIST, WOLVERINE PIPELINE COMPANY, HAMMOND AREA, SHALL BE CONTACTED AT 219-777-0277 A MINIMUM OF 48 HOURS IN ADVANCE OF WORK IN OR AROUND THE LIQUID PETROLEUM PIPELINE INDICATED BETWEEN STATION 29+00 AND 30+00 ON THE PLANS.
- WOLVERINE PIPE LINE WILL REQUIRE A 20' WIDE NO VIBRATION / NO STOPPING ZONE, 10' ON EITHER SIDE OF THE PIPE CENTERLINE LOCATED BETWEEN STATION 29+00 AND 30+00. REFER TO THE WOLVERINE PIPELINE COMPANY EXCAVATION / CONSTRUCTION RESTRICTIONS LIST INCLUDED IN THE SPECIAL PROVISIONS.
- ENBRIDGE WILL REQUIRE A NO STOPPING NO VIBE (VIBRATORY FUNCTION TURNED OFF) ZONE WITHIN 20' OF THE PIPELINE WHICH IS LOCATED APPROXIMATELY WITHIN STATION 17+25 TO 18+35. ANY CURB AND GUTTER REMOVAL OVER THE PIPELINE SHALL BE UNDER THE ENBRIDGE FIELD REPRESENTATIVE'S SUPERVISION. A ONE CALL TICKET SHOULD BE PLACED PRIOR TO THE WORK STARTING SO THE ENBRIDGE FIELD REPRESENTATIVE CAN BE PRESENT. RAY ALFORD, ENBRIDGE FIELD REPRESENTATIVE, SHOULD BE CONTACTED AT 219-765-5847.
- AT LEAST FORTY-EIGHT (48) HOURS PRIOR TO COMMENCING ANY EXCAVATION OR OTHER CONSTRUCTION ACTIVITY IN THE VICINITY OF CITGO'S PIPELINES, THE INSTALLER MUST TELEPHONE THE TEXAS EXCAVATION SAFETY SYSTEM (TESS) (1-800-344-8377). NO EXCAVATION OR OTHER CONSTRUCTION ACTIVITY SHALL BE CONDUCTED IN THE IMMEDIATE VICINITY OF THE PIPELINES IN THE ABSENCE OF A CITGO REPRESENTATIVE. THE INSTALLER WILL ASSUME FULL LIABILITY FOR ANY DAMAGES TO CITGO FACILITIES DUE TO CONSTRUCTION/EXCAVATION ACTIVITIES.
- ATTENTION IS CALLED TO THE "CITGO" GENERAL REQUIREMENTS DOCUMENT IN THE SPECIAL PROVISIONS. CITGO IS REQUIRING ANY INSTALLERS TO ACKNOWLEDGE BY SIGNING THE DOCUMENT THAT THEY HAVE RECEIVED AND REVIEWED A COPY OF THESE GENERAL REQUIREMENTS.

FILE NAME = 22R0506-INDX-01 - P01	USER NAME =	DESIGNED -- MPN	REVISED --	STATE OF ILLINOIS DEPARTMENT OF TRANSPORTATION	135TH STREET ROADWAY RESURFACING INDEX OF SHEETS, STANDARDS & GENERAL NOTES			F.A.U. RTE.	SECTION	COUNTY	TOTAL SHEETS	SHEET NO.
		CHECKED -- WPD	REVISED --		0282	22-00077-00-RS	WILL	20	2			
	PLOT SCALE =	DRAWN -- RG	REVISED --		CONTRACT NO. 61J62							
	PLOT DATE = 04-03-2023	CHECKED -- AG	REVISED --		SCALE: NONE	SHEET NO. 2 OF 20 SHEETS	STA. TO STA.	FED. ROAD DIST. NO. 1	ILLINOIS	FED. AID PROJECT E1D(653)		

SUMMARY OF QUANTITIES						FED 80%	FED 80%	FED 80%
						VILLAGE 20%	VILLAGE 20%	VILLAGE 20%
						ROADWAY	SAFETY	TRAINEES
S.P.	S.I.	CODE NO.	PAY ITEM	UNIT	TOTAL QUANTITY	CONSTRUCTION TYPE CODE		
						0005	0021	0042
		28000510	INLET FILTERS	EACH	23	23		
		31101200	SUBBASE GRANULAR MATERIAL, TYPE B 4"	SQ YD	10		10	
		35800100	PREPARATION OF BASE	SQ YD	86	86		
		35800200	AGGREGATE BASE REPAIR	TON	30	30		
**		40201000	AGGREGATE FOR TEMPORARY ACCESS	TON	5	5		
		40600290	BITUMINOUS MATERIALS (TACK COAT)	POUND	8,715	8,715		
BDE		40600370	LONGITUDINAL JOINT SEALANT	FOOT	7,585	7,585		
		40600400	MIXTURE FOR CRACKS, JOINTS, AND FLANGEWAYS	TON	20	20		
		40600982	HOT-MIX ASPHALT SURFACE REMOVAL - BUTT JOINT	SQ YD	150	150		
D1		40603200	POLYMERIZED HOT-MIX ASPHALT BINDER COURSE, IL-4.75, N50	TON	535	535		
D1		40604062	HOT-MIX ASPHALT SURFACE COURSE, IL-9.5, MIX "D", N70	TON	1,085	1,085		
		42400200	PORTLAND CEMENT CONCRETE SIDEWALK 5 INCH	SQ FT	60		60	
**		42400800	DETECTABLE WARNINGS	SQ FT	10		10	
		44000157	HOT-MIX ASPHALT SURFACE REMOVAL, 2"	SQ YD	12,905	12,905		
		44000200	DRIVEWAY PAVEMENT REMOVAL	SQ YD	14	14		
		44000500	COMBINATION CURB AND GUTTER REMOVAL	FOOT	569	569		

FILE NAME = 22R0506-QUAN-01 - P01

USER NAME =	DESIGNED -- MPN	REVISED --
	CHECKED -- WD	REVISED --
PLOT SCALE =	DRAWN -- BG	REVISED --
PLOT DATE = 04-03-2023	CHECKED -- AG	REVISED --

STATE OF ILLINOIS
DEPARTMENT OF TRANSPORTATION

135TH STREET ROADWAY RESURFACING SUMMARY OF QUANTITIES		F.A.U. RTE.	SECTION	COUNTY	TOTAL SHEETS	SHEET NO.
SCALE: NONE		0282	22-00077-00-RS	WILL.	20	3
SHEET NO. 3 OF 20 SHEETS		CONTRACT NO. 61J62		FED. ROAD DIST. NO. 1 ILLINOIS FED. AID PROJECT E1D1(653)		
STA. TO STA.						

SUMMARY OF QUANTITIES						FED 80%	FED 80%	FED 80%
						VILLAGE 20%	VILLAGE 20%	VILLAGE 20%
						ROADWAY	SAFETY	TRAINEES
S.P.	S.I.	CODE NO.	PAY ITEM	UNIT	TOTAL QUANTITY	CONSTRUCTION TYPE CODE		
						0005	0021	0042
		44201761	CLASS D PATCHES, TYPE I, 10 INCH	SQ YD	8	8		
		44201765	CLASS D PATCHES, TYPE II, 10 INCH	SQ YD	7	7		
		44201769	CLASS D PATCHES, TYPE III, 10 INCH	SQ YD	15	15		
		44201771	CLASS D PATCHES, TYPE IV, 10 INCH	SQ YD	56	56		
		67100100	MOBILIZATION	LSUM	1	1		
		70102625	TRAFFIC CONTROL AND PROTECTION, STANDARD 701606	LSUM	1	1		
		70102635	TRAFFIC CONTROL AND PROTECTION, STANDARD 701701	LSUM	1	1		
		70102640	TRAFFIC CONTROL AND PROTECTION, STANDARD 701801	LSUM	1	1		
		70300100	SHORT TERM PAVEMENT MARKING	FOOT	1,850		1,850	
		70300150	SHORT TERM PAVEMENT MARKING REMOVAL	SQ FT	618		618	
	*	78000100	THERMOPLASTIC PAVEMENT MARKING - LETTERS AND SYMBOLS	SQ FT	341		341	
	*	78000200	THERMOPLASTIC PAVEMENT MARKING - LINE 4"	FOOT	4,795		4,795	
	*	78000400	THERMOPLASTIC PAVEMENT MARKING - LINE 6"	FOOT	1,050		1,050	
	*	78000600	THERMOPLASTIC PAVEMENT MARKING - LINE 12"	FOOT	170		170	
	*	78000650	THERMOPLASTIC PAVEMENT MARKING - LINE 24"	FOOT	142		142	
		78300200	RAISED REFLECTIVE PAVEMENT MARKER REMOVAL	EACH	28		28	

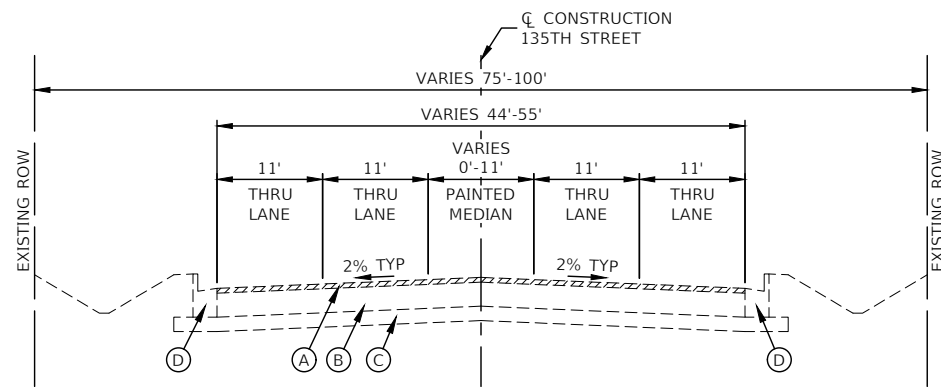
* SPECIALTY ITEMS

FILE NAME = 22R0506-QUAN-01 - P02	USER NAME =	DESIGNED -- MPN	REVISED --	STATE OF ILLINOIS DEPARTMENT OF TRANSPORTATION	135TH STREET ROADWAY RESURFACING SUMMARY OF QUANTITIES		FAU RTE. 0282	SECTION 22-00077-00-RS	COUNTY WILL	TOTAL SHEETS 20	SHEET NO. 4	
	PLOT SCALE =	CHECKED -- WD	REVISED --		SCALE: NONE	SHEET NO. 4	OF 20 SHEETS	STA.	TO STA.	CONTRACT NO. 61J62		
	PLOT DATE = 04-03-2023	DRAWN -- BG	REVISED --		FED. ROAD DIST. NO. 1 ILLINOIS FED. AID PROJECT E1D(653)							
		CHECKED -- AG	REVISED --									

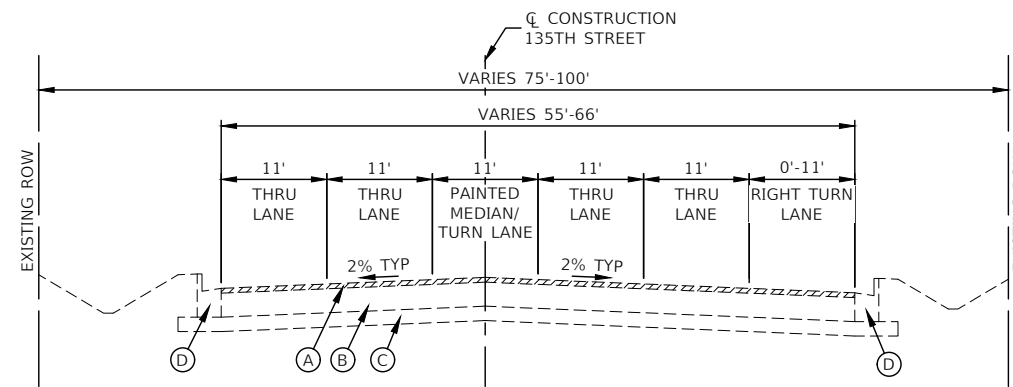
SUMMARY OF QUANTITIES						FED 80%	FED 80%	FED 80%
						VILLAGE 20%	VILLAGE 20%	VILLAGE 20%
						ROADWAY	SAFETY	TRAINEES
S.P.	S.I.	CODE NO.	PAY ITEM	UNIT	TOTAL QUANTITY	CONSTRUCTION TYPE CODE		
						0005	0021	0042
D1	*	88600600	DETECTOR LOOP REPLACEMENT	FOOT	414	414		
**		Z0004518	HOT-MIX ASPHALT DRIVEWAY PAVEMENT, 5"	SQ YD	14	14		
**		Z0017400	DRAINAGE & UTILITY STRUCTURES TO BE ADJUSTED	EACH	25	25		
**		Z0017700	DRAINAGE & UTILITY STRUCTURES TO BE RECONSTRUCTED	EACH	1	1		
D1		Z0030850	TEMPORARY INFORMATION SIGNING	SQ FT	77	77		
**		X4404700	SIDEWALK REMOVAL (SPECIAL)	SQ FT	60		60	
**		X6060048	COMBINATION CONCRETE CURB AND GUTTER, TYPE B-6.18 (SPECIAL)	FOOT	20	20		
**		X6060052	COMBINATION CONCRETE CURB AND GUTTER, TYPE B-6.24 (SPECIAL)	FOOT	549	549		
**		XX006343	SEEDING (COMPLETE)	SQ YD	100	100		

* SPECIALTY ITEMS

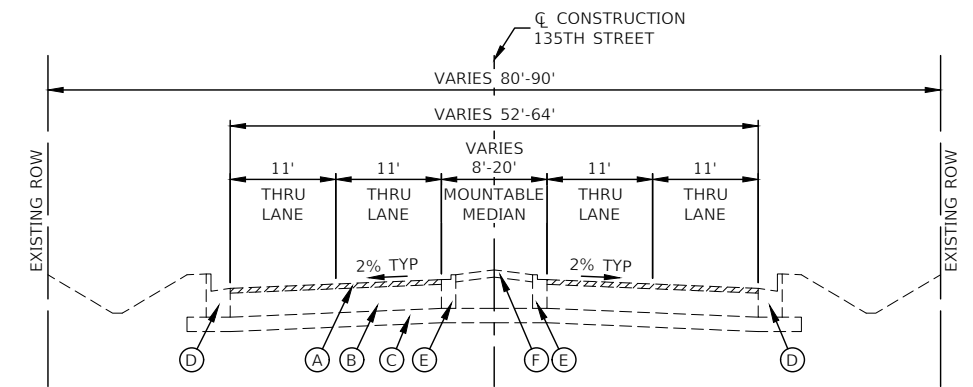
FILE NAME = 22R0500-QUAN-01 - P03	USER NAME =	DESIGNED -- MPN	REVISED --	STATE OF ILLINOIS DEPARTMENT OF TRANSPORTATION	135TH STREET ROADWAY RESURFACING SUMMARY OF QUANTITIES	F.A.U. RTE.	SECTION	COUNTY	TOTAL SHEETS	SHEET NO.	
		CHECKED -- WD	REVISED --			0282	22-06077-00-RS	WILL	20	5	
	PLOT SCALE =	DRAWN -- BG	REVISED --			CONTRACT NO. 61J62					
	PLOT DATE = 04-03-2023	CHECKED -- AG	REVISED --			SCALE: NONE	SHEET NO. 5	OF 20 SHEETS	STA.	TO STA.	FED. ROAD DIST. NO. 1



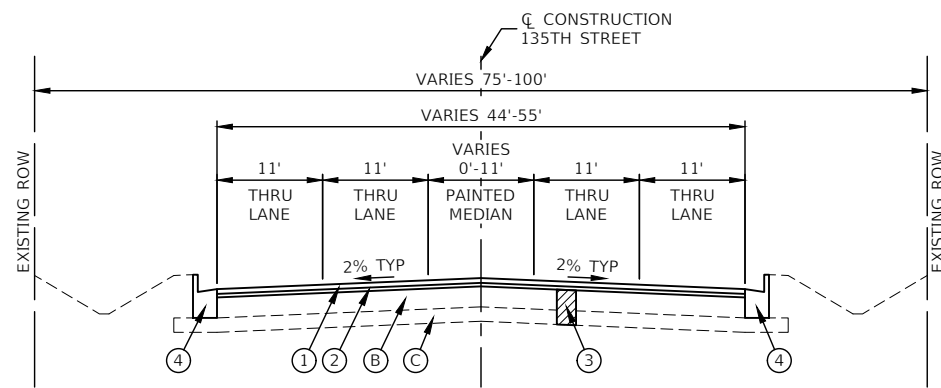
EXISTING TYPICAL SECTION
STA 10+30.16 TO STA 16+87.95



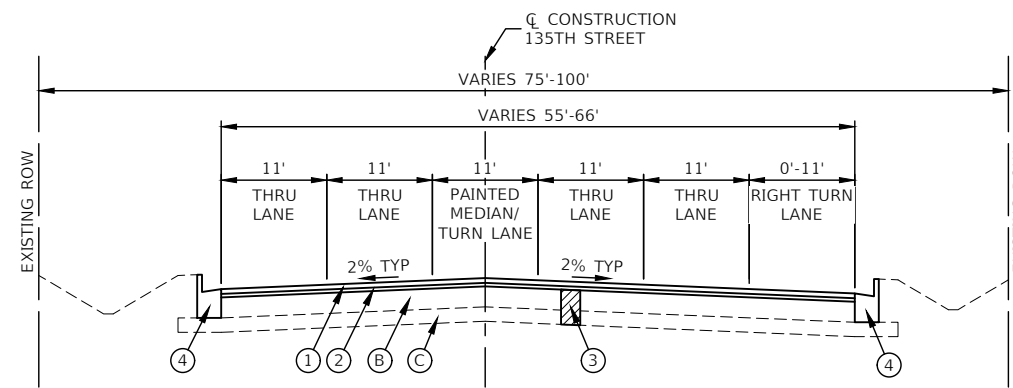
EXISTING TYPICAL SECTION
STA 16+87.95 TO STA 26+34.53



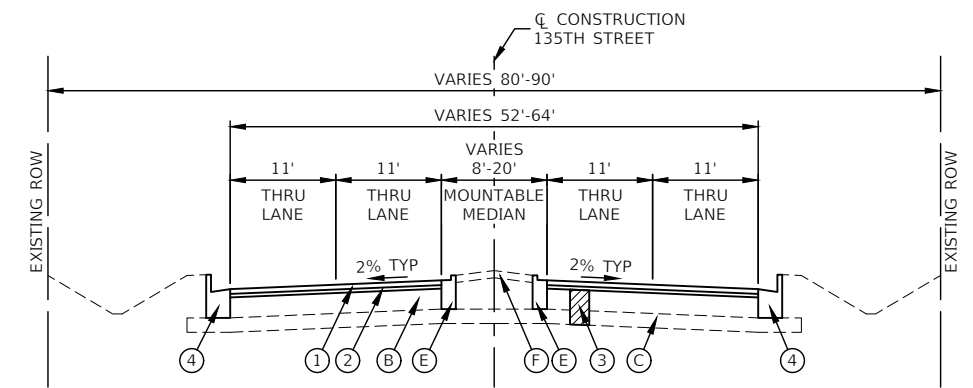
EXISTING TYPICAL SECTION
STA 26+34.53 TO STA 30+29.26



PROPOSED TYPICAL SECTION
STA 10+30.16 TO STA 16+87.95



PROPOSED TYPICAL SECTION
STA 16+87.95 TO STA 26+34.53



PROPOSED TYPICAL SECTION
STA 26+34.53 TO STA 30+29.26

EXISTING LEGEND

- (A) HOT-MIX ASPHALT SURFACE REMOVAL, 2"
- (B) EXISTING HOT-MIX ASPHALT PAVEMENT, TO REMAIN
- (C) AGGREGATE SUBGRADE
- (D) COMBINATION CURB AND GUTTER REMOVAL (AS SHOWN ON THE PLANS OR AS DIRECTED BY THE ENGINEER)
- (E) EXISTING COMBINATION CONCRETE CURB AND GUTTER, TYPE M-4.12 TO REMAIN
- (F) EXISTING MOUNTABLE ASPHALT MEDIAN SURFACE TO REMAIN

NOTE

LONGITUDINAL JOINT SEALANT SHALL BE PLACED ON THE POLYMERIZED HOT-MIX ASPHALT BINDER COURSE, IL-4.75, N50 PRIOR TO THE SURFACE COURSE.

PROPOSED LEGEND

- (1) HOT-MIX ASPHALT SURFACE COURSE, IL-9.5, MIX "D", N70, 1 1/2"
- (2) POLYMERIZED HOT-MIX ASPHALT BINDER COURSE, IL-4.75, N50, 3/4"
- (3) CLASS D PATCHES, 10 INCH PREPARATION OF BASE
- (4) AGGREGATE BASE REPAIR (AS SHOWN ON THE PLANS OR AS DIRECTED BY THE ENGINEER)
- (5) COMBINATION CONCRETE CURB AND GUTTER, TYPE B-6.24 (SPECIAL) (AS SHOWN ON THE PLANS OR AS DIRECTED BY THE ENGINEER)

HOT-MIX ASPHALT MIXTURE REQUIREMENTS

MIXTURE TYPE	AIR VOIDS @ Ndes	QMP
ROADWAY RESURFACING		
HOT-MIX ASPHALT SURFACE COURSE, 1L-9.5, MIX "D", N70, 1 1/2"	4% @ 70 Gyr.	LR 1030-2
POLYMERIZED HOT-MIX ASPHALT BINDER COURSE, 1L-4.75, N50, 3/4"	3.5% @ 50 Gyr.	LR 1030-2
HMA DRIVEWAY PAVEMENT 5"		
HOT-MIX ASPHALT SURFACE COURSE, 1L-9.5, MIX "D", N50, 2"	4% @ 50 Gyr.	LR 1030-2
HOT-MIX ASPHALT BINDER COURSE, 1L-19.0, N50, 3"	4% @ 50 Gyr.	LR 1030-2
PATCHING		
CLASS D PATCHES (HMA BINDER 1L-19mm), 10"	4% @ 70 Gyr.	LR 1030-2
QMP DESIGNATION: QUALITY CONTROL/QUALITY ASSURANCE (QC/QA) PER LR1030-2		

NOTES:

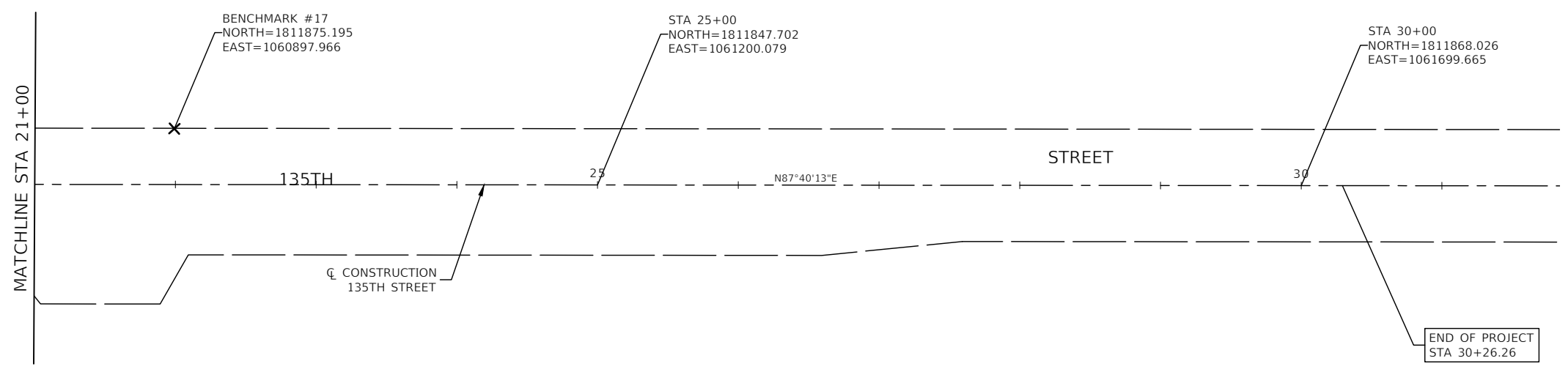
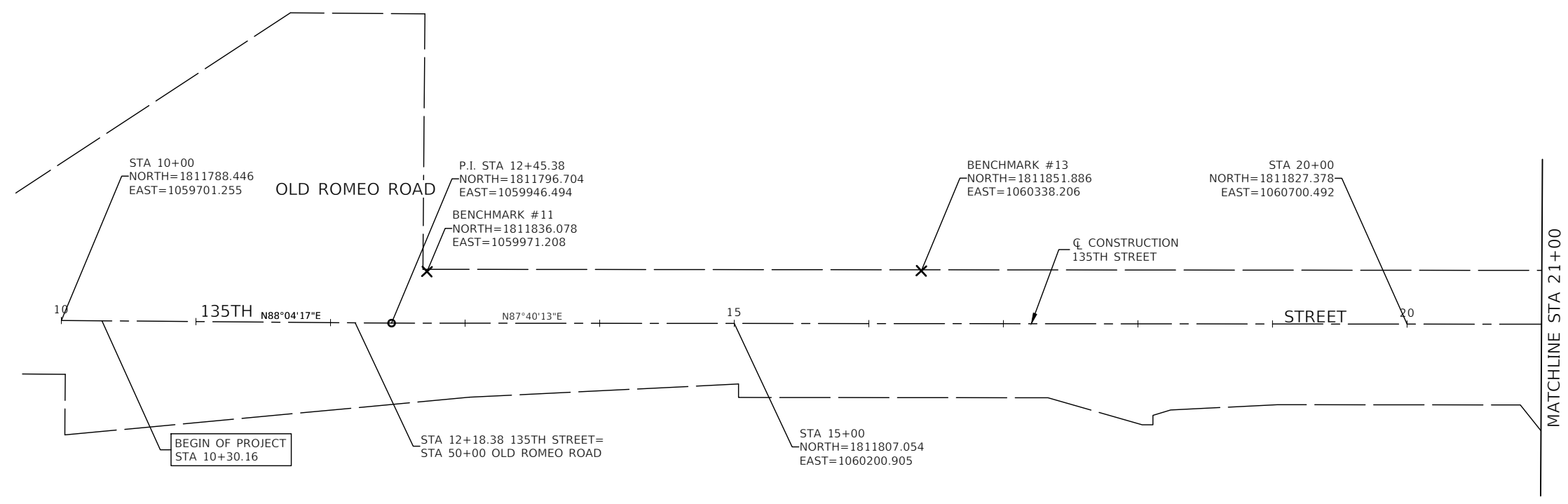
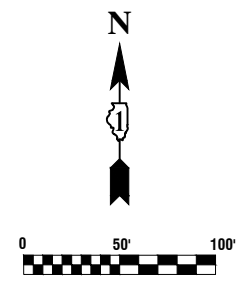
- THE UNIT WEIGHT USED TO CALCULATE ALL HMA SURFACE MIXTURE IS 112 LBS/SQ/IN.
- ALL PATCHING OPERATIONS SHALL TAKE PLACE AFTER SURFACE MILLING HAS BEEN COMPLETED.
- THE "AC TYPE" FOR POLYMERIZED HMA MIXES SHALL BE "SBS/SBR PG 76-22" AND FOR NON-POLYMERIZED HMA THE "AC TYPE" SHALL BE "PG-64-22" UNLESS MODIFIED BY RECLAIMED MATERIALS SPECIFICATIONS.

FILE NAME = 22R0506-TYPX-01 - P01	USER NAME =	DESIGNED -- MPN	REVISED --
		CHECKED -- WD	REVISED --
	PLOT SCALE =	DRAWN -- BG	REVISED --
	PLOT DATE = 04-03-2023	CHECKED -- AG	REVISED --

STATE OF ILLINOIS
DEPARTMENT OF TRANSPORTATION

135TH STREET ROADWAY RESURFACING TYPICAL CROSS SECTIONS		
SCALE: NONE	SHEET NO. 6 OF 20 SHEETS	STA. TO STA.

F.A.U. RTE. 0282	SECTION 22-00077-00-RS	COUNTY WILL	TOTAL SHEETS 20	SHEET NO. 6
CONTRACT NO. 61J62			FED. ROAD DIST. NO. 1 ILLINOIS FED. AID PROJECT E1D(653)	



- NOTES**
- COORDINATES ARE BASED ON ILLINOIS STATE PLANE EASTERN ZONE NORTH AMERICAN DATUM 1983
 - SURVEY FEET UNITS WERE USED.
 - ALL ELEVATIONS REFER TO NAVD88 DATUM.

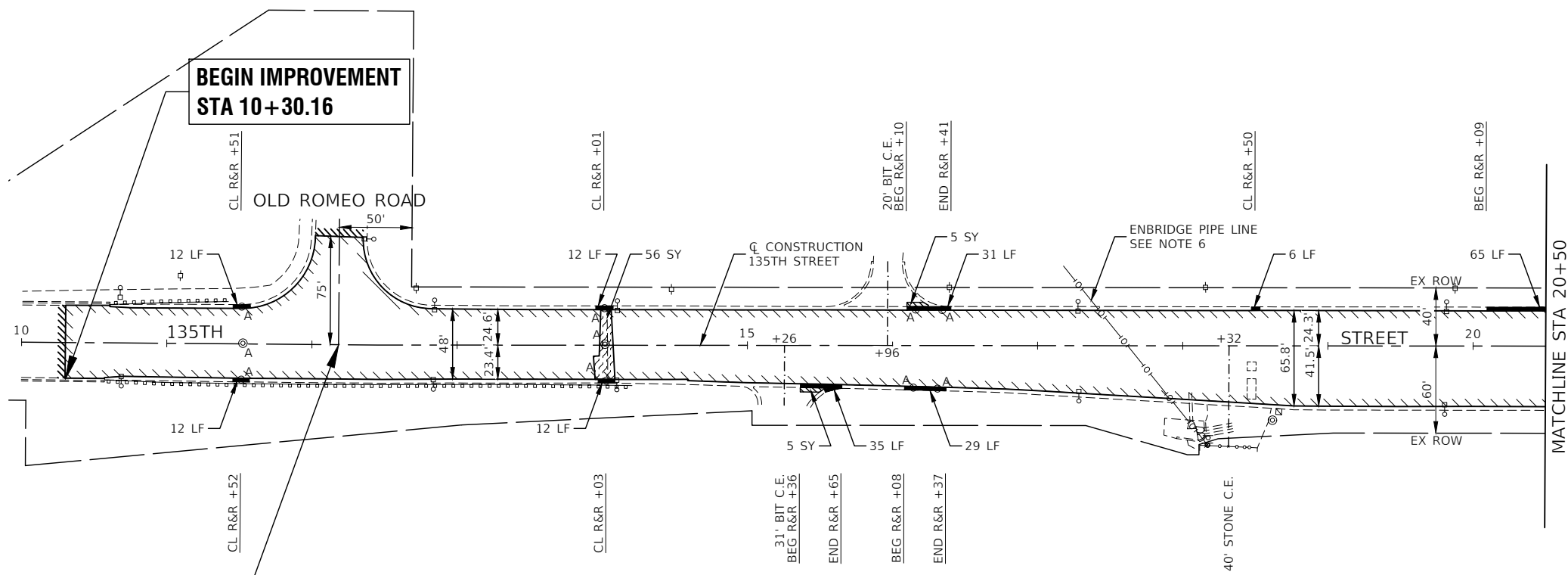
BENCHMARKS

BENCHMARK #11
RR SPIKE IN SOUTH OF PP AT NORTHEAST COR 135TH ST & OLD ROMEO RD.
ELEV=597.17

BENCHMARK #13
SPIKENAIL IN SOUTH FACE OF PP AT NORTHEAST COR 135TH ST & WEST ENTRANCE TO CITGO (BLUE LOT)
ELEV=589.42

BENCHMARK #17
SPIKENAIL IN SOUTH FACE OF PP AT NORTHEAST COR 135TH ST & MAIN CITGO ENTRANCE.
ELEV=590.41

FILE NAME = 22R0506-TIES01 - P01	USER NAME =	DESIGNED = MPN	REVISED =	STATE OF ILLINOIS DEPARTMENT OF TRANSPORTATION	135TH STREET ROADWAY RESURFACING ALIGNMENT, TIES AND BENCHMARKS			F.A.U. RTE.	SECTION	COUNTY	TOTAL SHEETS	SHEET NO.
	PLOT SCALE =	CHECKED = WD	REVISED =		0282	22-00077-00-RS	WILL	20	7			
	PLOT DATE = 04-03-2023	DRAWN = BG	REVISED =		SCALE: 1"=50'			SHEET NO.7 OF 20 SHEETS STA. 10+00 TO STA. 30+29.26			CONTRACT NO. 61J62	
	CHECKED = AG	REVISED =						FED. ROAD DIST. NO. 1 ILLINOIS FED. AID PROJECT E1D(653)				



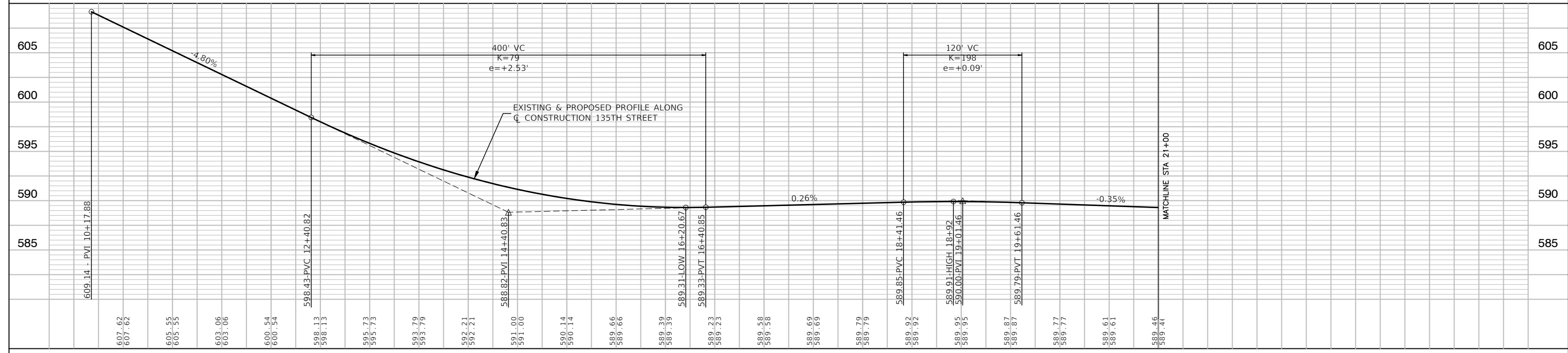
**STA 12+18.38 135TH STREET =
STA 50+00 OLD ROMEO ROAD**

LEGEND

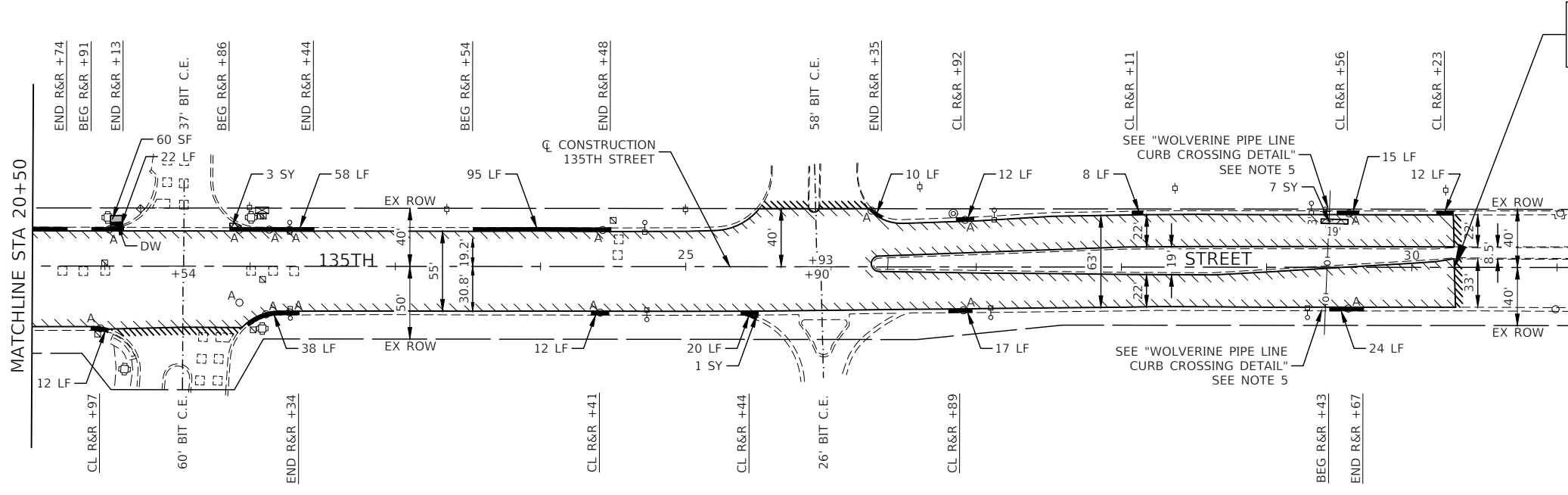
- HMA SURFACE REMOVAL, 2"
- POLYMERIZED HOT-MIX ASPHALT BINDER COURSE, IL-4.75, N50, 3/4" HOT-MIX ASPHALT SURFACE COURSE, IL-9.5, MIX "D", N70, 1 1/2"
- SIDEWALK REMOVAL (SPECIAL)
PCC SIDEWALK, 5"
SUBBASE GRANULAR MATERIAL, TYPE B, 4"
- CLASS D PATCHES, 10"
PREPARATION OF BASE
AGGREGATE BASE REPAIR
- DRIVEWAY PAVEMENT REMOVAL
HMA DRIVEWAY PAVEMENT, 5"
- DETECTABLE WARNINGS - DW
- COMBINATION CONCRETE CURB AND GUTTER REMOVAL
COMBINATION CONCRETE CURB AND GUTTER, TYPE B-6.18 (SPECIAL)
COMBINATION CONCRETE CURB AND GUTTER, TYPE B6-6.24 (SPECIAL) (SEE NOTES 1 & 2)
- "A" DRAINAGE & UTILITY STRUCTURES TO BE ADJUSTED
- PIPELINE
- EXISTING DETECTOR LOOP
- HMA SURFACE REMOVAL - BUTT JOINT
- BEG R&R +XX BEGIN STATION FOR CURB AND GUTTER REMOVAL AND REPLACEMENT
- END R&R +XX END STATION OF CURB AND GUTTER REMOVAL AND REPLACEMENT
- CL R&R +XX CENTER STATION OF CURB AND GUTTER REMOVAL AND REPLACEMENT (UNDER 20 LINEAL FEET)

NOTE:

1. COMBINATION CONCRETE CURB AND GUTTER, TYPE B-6.18 (SPECIAL) IS LOCATED IN DRIVEWAY LOCATIONS AS INDICATED IN THE SPECIAL PROVISION.
2. COMBINATION CONCRETE CURB AND GUTTER, TYPE B-6.24 (SPECIAL) IS LOCATED IN THE MAINLINE ROADWAY.
3. ALL SIDEWALK RAMPS WILL BE IN ACCORDANCE WITH THE HIGHWAY STANDARDS REFERENCED ON SHEET 2.
4. WOLVERINE PIPELINE COVER VARIES FROM 63" AT THE NORTH EDGE OF PAVEMENT TO 80" DEEP AT THE SOUTH EDGE OF PAVEMENT
5. WOLVERINE PIPELINE - 18" LIQUID PETROLEUM PIPELINE A 20' WIDE NO VIBRATION / NO STOPPING ZONE, 10' ON EITHER SIDE OF THIS PIPE CENTERLINE IS REQUIRED. (SEE GENERAL NOTES 14 & 15 ON SHEET 2)
6. ENBRIDGE PIPELINE - 34" LINE 6A CRUDE OIL PIPELINE ENBRIDGE WILL REQUIRE "NO STOPPING NO VIB ZONE" (VIBRATORY FUNCTION TURNED OFF) WITHIN 20' OF THE ENBRIDGE PIPELINE. (SEE GENERAL NOTE 16 ON SHEET 2)



FILE NAME = 22R0506-PLPR-01 - PLPR01	USER NAME =	DESIGNED = MPN	REVISD =	STATE OF ILLINOIS DEPARTMENT OF TRANSPORTATION	135TH STREET ROADWAY RESURFACING PROPOSED IMPROVEMENT PLAN			F.A.U. RTE. = 0282	SECTION = 22-00077-00-RS	COUNTY = WILL	TOTAL SHEETS = 20	SHEET NO. = 8
	PLOT SCALE =	DRAWN = ACAD	REVISD =		SCALE: 1"=50'			SHEET NO. 8 OF 20 SHEETS	STA. 10+30.16 TO STA. 21+00	CONTRACT NO. 61J62		
	PLOT DATE = 04-03-2023	CHECKED = ACAD	REVISD =					FED. ROAD DIST. NO. 1			ILLINOIS FED. AID PROJECT E1D(653)	



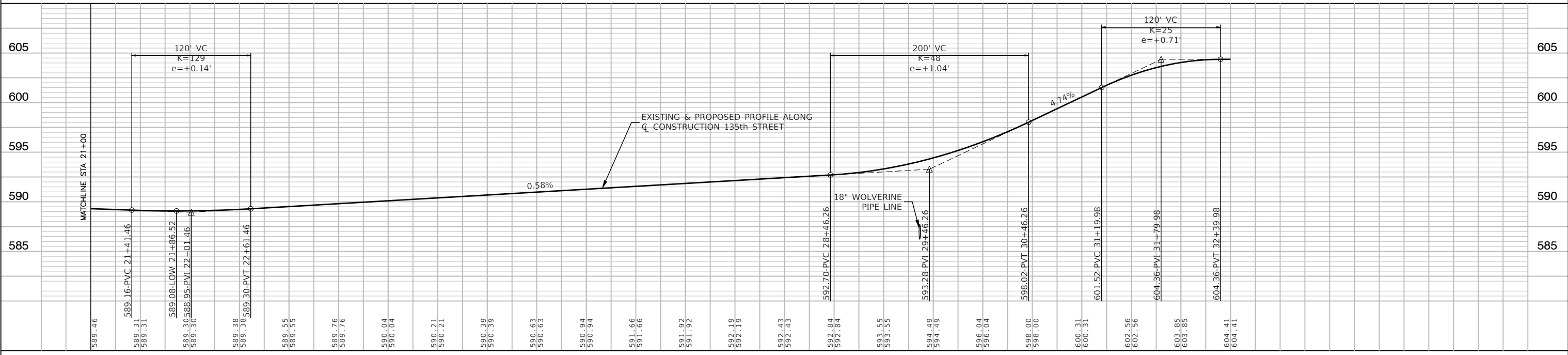
**END IMPROVEMENT
STA 30+29.26**

LEGEND

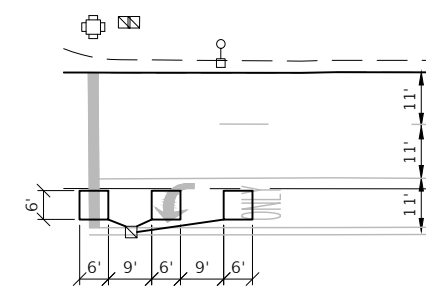
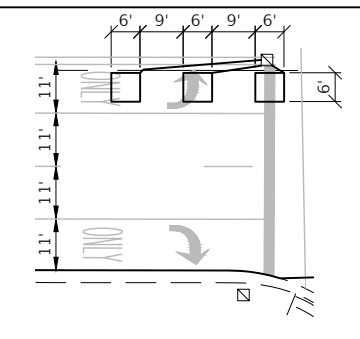
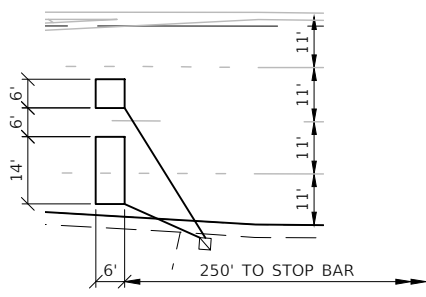
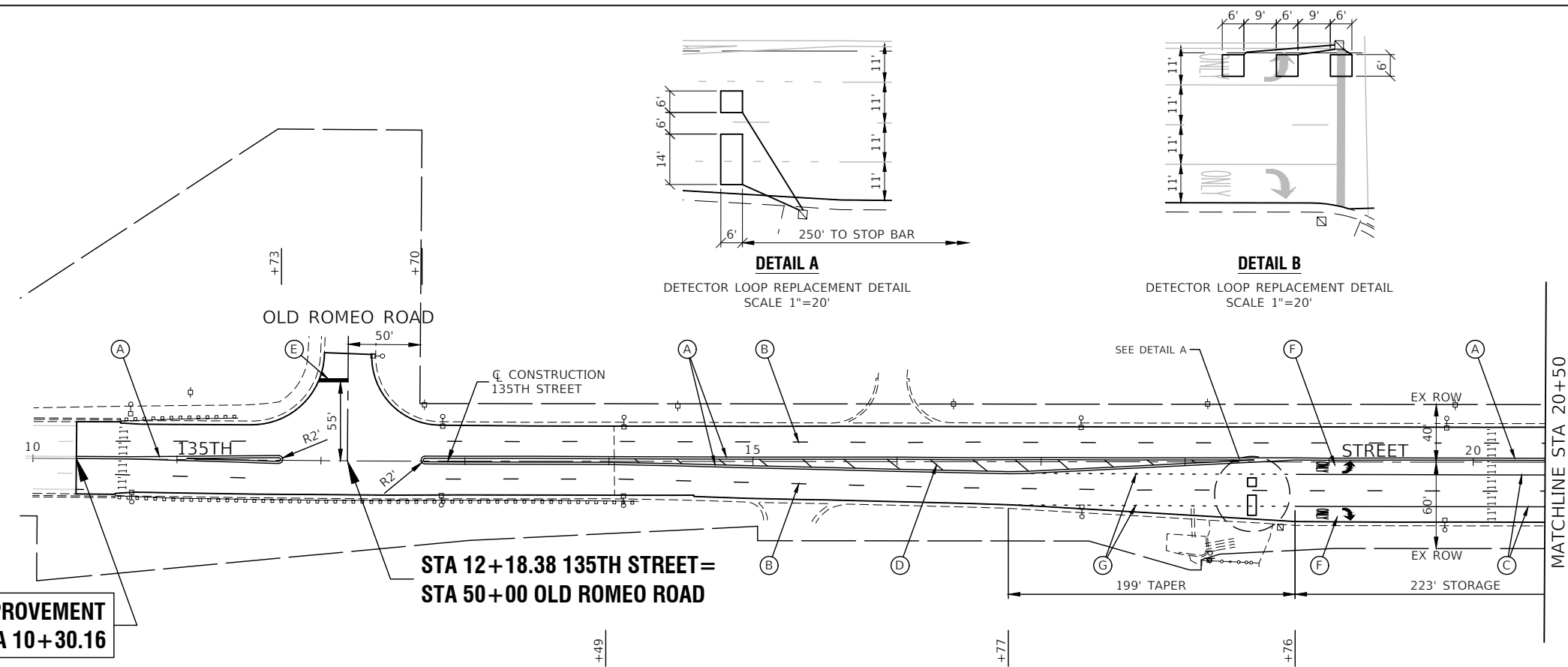
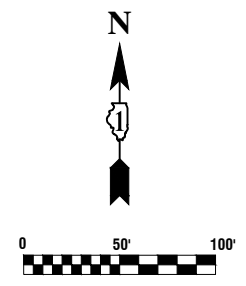
- HMA SURFACE REMOVAL, 2"
POLYMERIZED HOT-MIX ASPHALT BINDER COURSE, IL-4.75, N50, 3/4"
HOT-MIX ASPHALT SURFACE COURSE, IL-9.5, MIX "D", N70, 1 1/2"
- SIDEWALK REMOVAL (SPECIAL)
PCC SIDEWALK, 5"
SUBBASE GRANULAR MATERIAL, TYPE B, 4"
- CLASS D PATCHES, 10"
PREPARATION OF BASE
AGGREGATE BASE REPAIR
- DRIVEWAY PAVEMENT REMOVAL
HMA DRIVEWAY PAVEMENT, 5"
- DETECTABLE WARNINGS - DW
- COMBINATION CONCRETE CURB AND GUTTER REMOVAL
COMBINATION CONCRETE CURB AND GUTTER, TYPE B-6.18 (SPECIAL)
COMBINATION CONCRETE CURB AND GUTTER, TYPE B6-6.24 (SPECIAL)
(SEE NOTES 1 & 2)
- "A"
DRAINAGE & UTILITY STRUCTURES TO BE ADJUSTED
- PIPELINE
- EXISTING DETECTOR LOOP
- HMA SURFACE REMOVAL - BUTT JOINT
- BEG R&R +XX BEGIN STATION FOR CURB AND GUTTER REMOVAL AND REPLACEMENT
- END R&R +XX END STATION OF CURB AND GUTTER REMOVAL AND REPLACEMENT
- CL R&R +XX CENTER STATION OF CURB AND GUTTER REMOVAL AND REPLACEMENT (UNDER 20 LINEAL FEET)

NOTE:

1. COMBINATION CONCRETE CURB AND GUTTER, TYPE B-6.18 (SPECIAL) IS LOCATED IN DRIVEWAY LOCATIONS AS INDICATED IN THE SPECIAL PROVISION.
2. COMBINATION CONCRETE CURB AND GUTTER, TYPE B-6.24 (SPECIAL) IS LOCATED IN THE MAINLINE ROADWAY.
3. ALL SIDEWALK RAMPS WILL BE IN ACCORDANCE WITH THE HIGHWAY STANDARDS REFERENCED ON SHEET 2.
4. WOLVERINE PIPELINE COVER VARIES FROM 63" AT THE NORTH EDGE OF PAVEMENT TO 80" DEEP AT THE SOUTH EDGE OF PAVEMENT
5. WOLVERINE PIPELINE - 18" LIQUID PETROLEUM PIPELINE A 20' WIDE NO VIBRATION / NO STOPPING ZONE, 10' ON EITHER SIDE OF THIS PIPE CENTERLINE IS REQUIRED. (SEE GENERAL NOTES 14 & 15 ON SHEET 2)
6. ENBRIDGE PIPELINE - 34" LINE 6A CRUDE OIL PIPELINE ENBRIDGE WILL REQUIRE "NO STOPPING NO VIBE ZONE" (VIBRATORY FUNCTION TURNED OFF) WITHIN 20' OF THE ENBRIDGE PIPELINE. (SEE GENERAL NOTE 16 ON SHEET 2)



FILE NAME = 22R0506-PLPR-01 - PLPR02	USER NAME =	DESIGNED = MPN	REVISED =	STATE OF ILLINOIS DEPARTMENT OF TRANSPORTATION	135TH STREET ROADWAY RESURFACING PROPOSED IMPROVEMENT PLAN	F.A.U. RTE. 0282	SECTION 22-00077-00-RS	COUNTY WILL	TOTAL SHEETS 20	SHEET NO. 9	
	PLOT SCALE =	DRAWN = ACAD	REVISED =		SCALE: 1"=50'	SHEET NO. 9 OF 20 SHEETS	STA. 21+00 TO STA. 30+29.26		CONTRACT NO. 61J62		
	PLOT DATE = 04-03-2023	CHECKED = ACAD	REVISED =		FED. ROAD DIST. NO. 1		ILLINOIS		FED. AID PROJECT E1D(653)		



**BEGIN IMPROVEMENT
STA 10+30.16**

**STA 12+18.38 135TH STREET=
STA 50+00 OLD ROMEO ROAD**

MATCHLINE STA 20+50

**END IMPROVEMENT
STA 30+29.26**

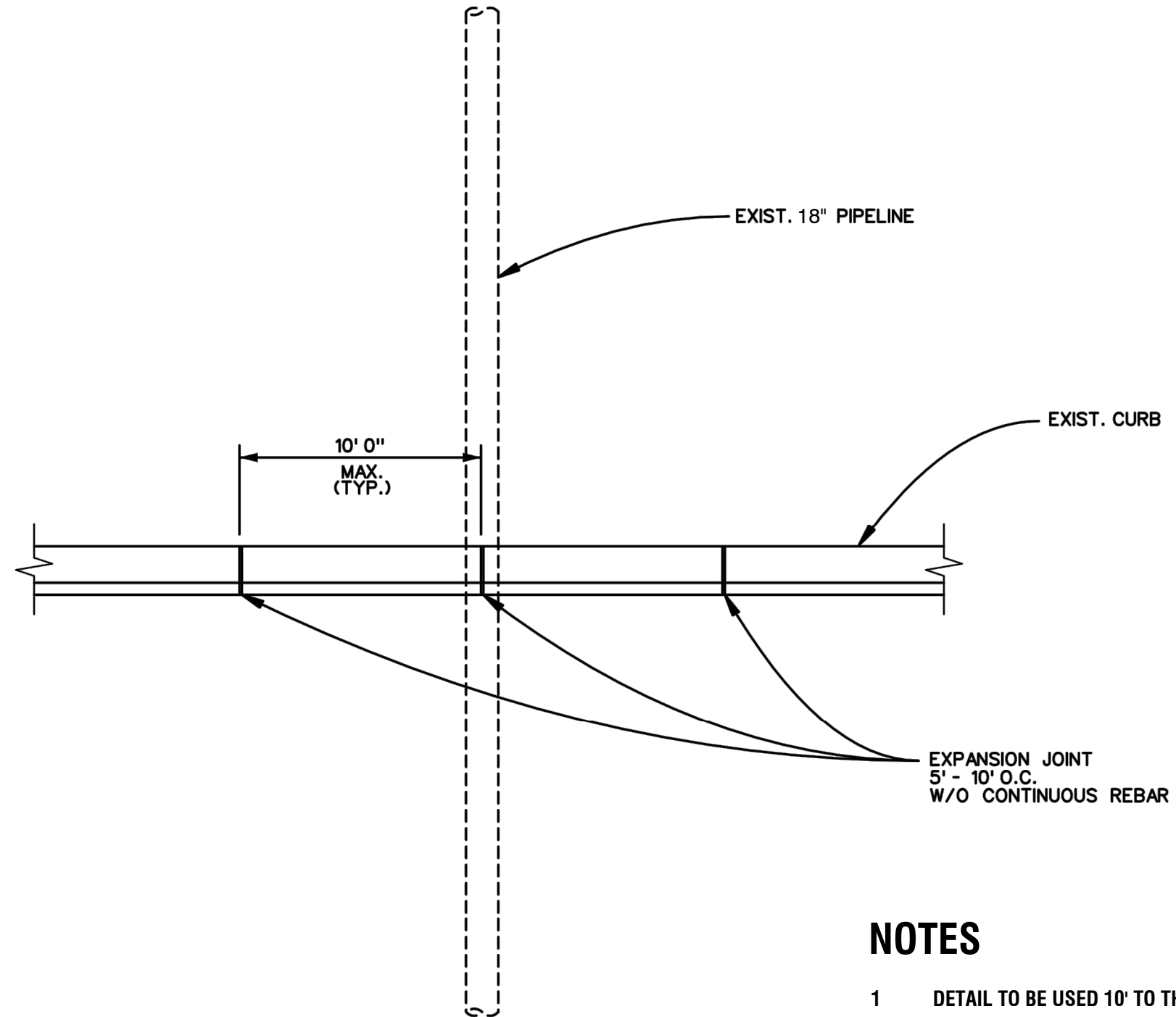
PAVEMENT MARKING LEGEND

- (A) THERMOPLASTIC PAVEMENT MARKING - LINE 4" YELLOW LINE (11" C-C)
- (B) THERMOPLASTIC PAVEMENT MARKING - LINE 4" WHITE SKIP DASH (10' LINE - 30' SPACE)
- (C) THERMOPLASTIC PAVEMENT MARKING - 6" LINE WHITE LANE LINE
- (D) THERMOPLASTIC PAVEMENT MARKING - 12" LINE YELLOW DIAGONAL LINE (75' C-C OR 5 EQUALLY SPACED)
- (E) THERMOPLASTIC PAVEMENT MARKING - 24" LINE WHITE STOP BAR LINE
- (F) THERMOPLASTIC PAVEMENT MARKING - WHITE LETTERS & SYMBOLS
- (G) THERMOPLASTIC PAVEMENT MARKING - 6" LINE WHITE SKIP DASH (2' LINE - 6' SPACE)
- (H) THERMOPLASTIC PAVEMENT MARKING - 6" LINE WHITE CROSS-WALK (6' C-C)
- [] DETECTOR LOOP REPLACEMENT

NOTES

1. SEE TC-13 DISTRICT ONE TYPICAL PAVEMENT MARKING FOR GUIDANCE.
2. ALL PAVEMENT MARKINGS SHALL BE THERMOPLASTIC UNLESS OTHERWISE SHOWN.

FILE NAME = 22R0506-PVMK-01 - IDOT P01	USER NAME =	DESIGNED = MPN	REVISED =	STATE OF ILLINOIS DEPARTMENT OF TRANSPORTATION	135TH STREET ROADWAY RESURFACING PAVEMENT MARKING PLAN	F.A.U. R.T.E. =	SECTION =	COUNTY =	TOTAL SHEETS =	SHEET NO. =
	PLOT SCALE =	DRAWN = BG	REVISED =			0282	22-00077-00-RS	WILL	20	10
PLOT DATE = 04-03-2023	CHECKED = AG	REVISED =		SCALE: 1"=50'		SHEET NO. 10 OF 20 SHEETS		STA. 10+30.16 TO STA. 30+29.26		FED. ROAD DIST. NO. 1 ILLINOIS FED. AID PROJECT E1D1(653)



NOTES

- 1 **DETAIL TO BE USED 10' TO THE EAST AND 10' TO THE WEST OF THE CENTER OF THE WOLVERINE PIPE LINE INDICATED ON THE PLANS BETWEEN STATION 29+00 AND 30+00.**

- 2 **STEEL REBAR IS NOT ALLOWED WITHIN 10' TO THE EAST AND 10' TO THE WEST OF THE PIPE LINE. FIBER GLASS AND POLYCARBONATE ARE ACCEPTABLE.**

FILE NAME = 22R0506-DTLS-01 - DTLS01

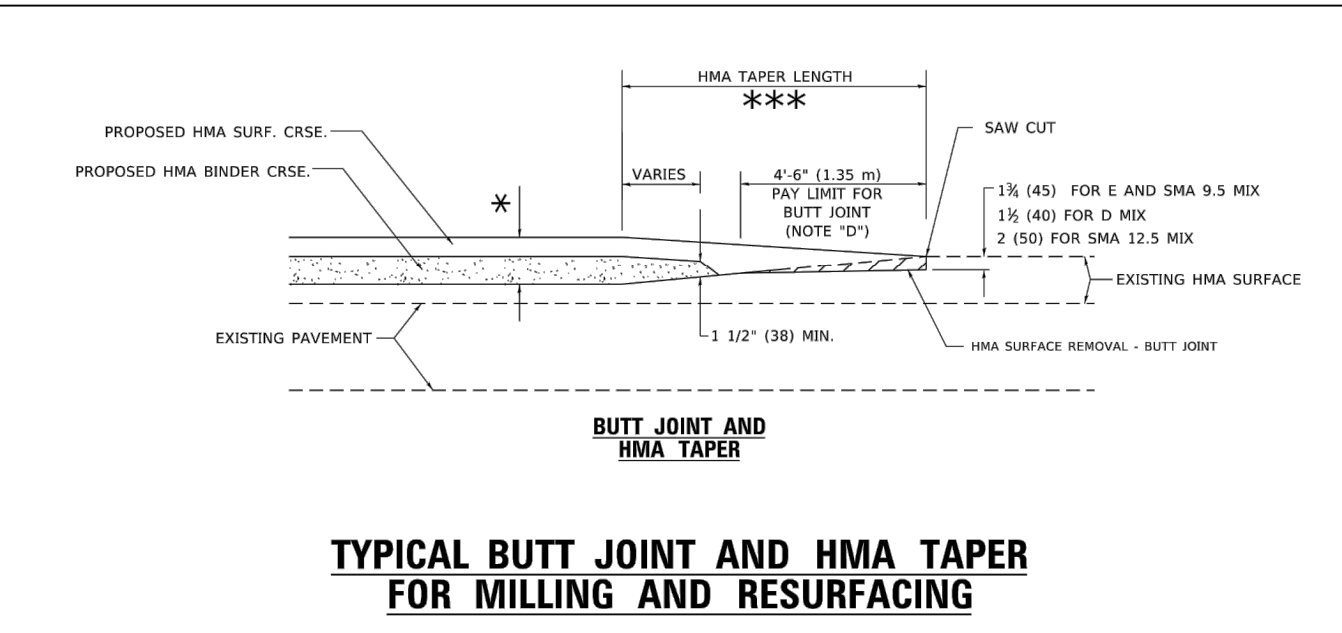
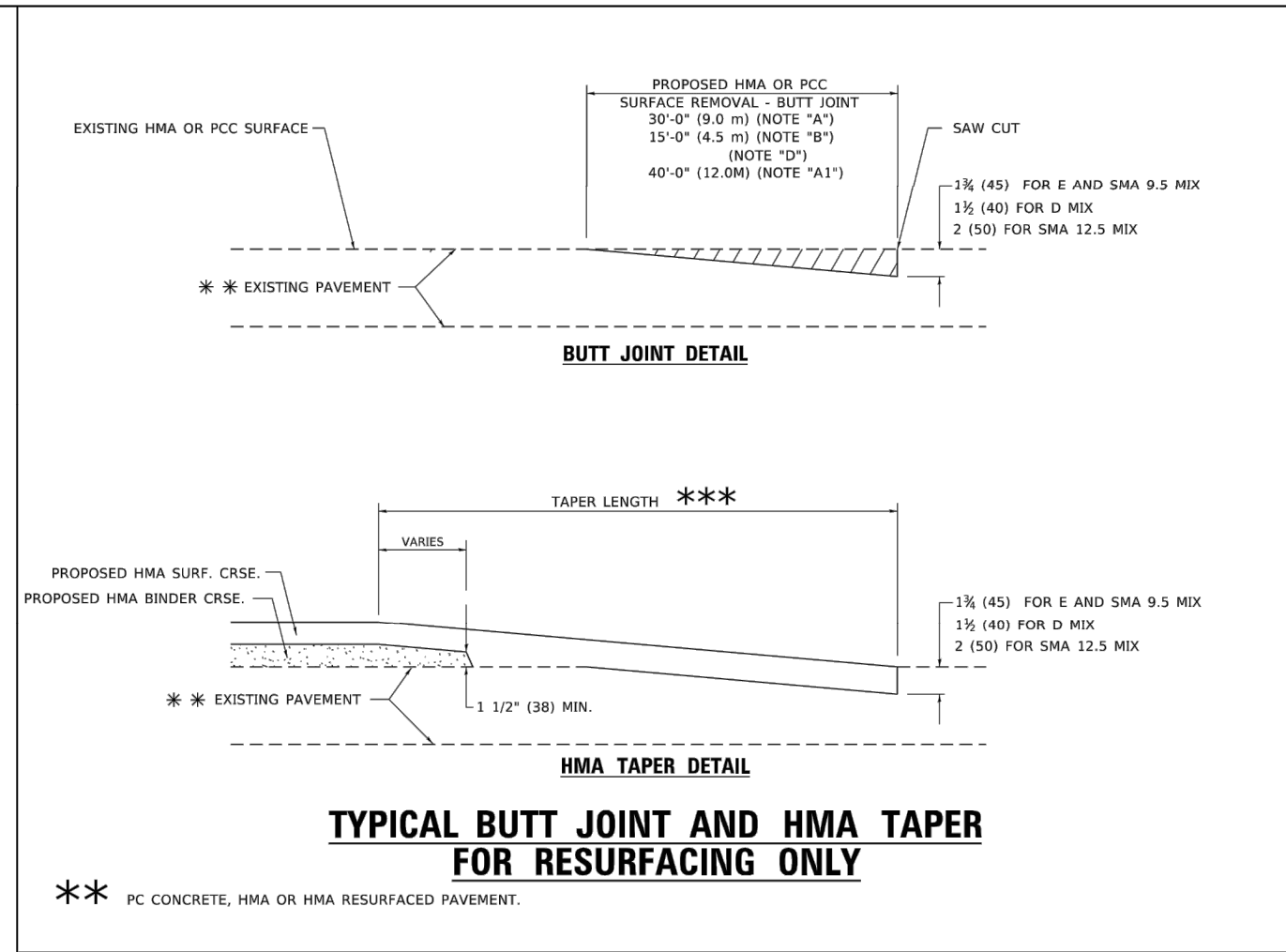
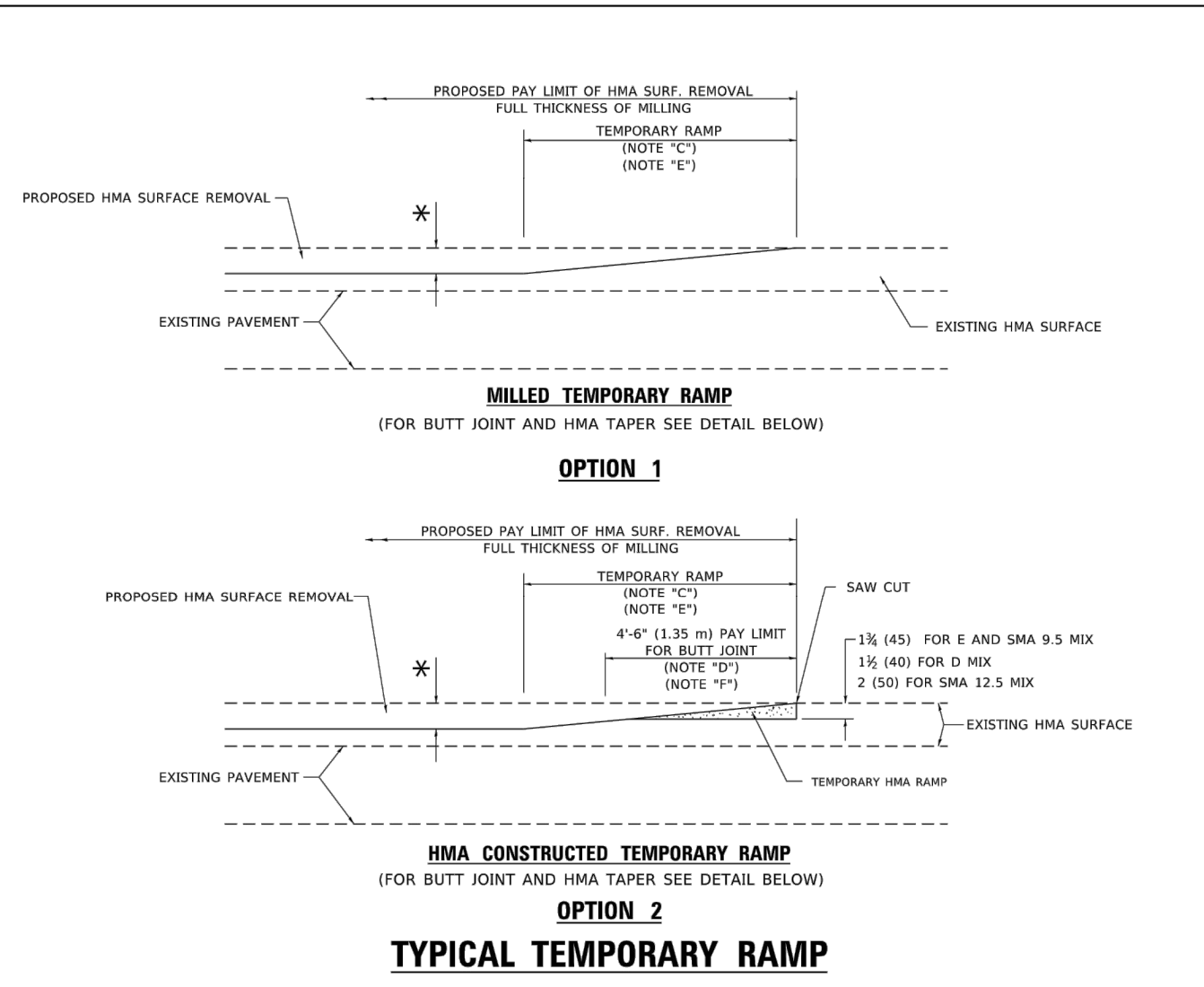
USER NAME =	DESIGNED --	REVISED --
	CHECKED --	REVISED --
PLOT SCALE =	DRAWN --	REVISED --
PLOT DATE =	CHECKED --	REVISED --

STATE OF ILLINOIS
DEPARTMENT OF TRANSPORTATION

WOLVERINE PIPE LINE CURB CROSSING DETAIL

SCALE: SHEET NO. 11 OF 20 SHEETS STA. TO STA.

F.A.U. RTE.	SECTION	COUNTY	TOTAL SHEETS	SHEET NO.
0282	22-00077-00-RS	WILL	20	11
FED. ROAD DIST. NO. 1 ILLINOIS			FED. AID PROJECT E1D(653)	
			CONTRACT NO. 61J62	



GENERAL NOTES

- MAINLINE ARTERIAL ROADWAYS AND MAJOR SIDE ROADS.
- INTERSTATES
- MINOR SIDE ROADS.
- THE TEMP. RAMP SHALL BE CONSTRUCTED IMMEDIATELY UPON REMOVAL OF THE EXISTING HMA SURFACE.
- THE BUTT JOINT SHALL BE CONSTRUCTED IMMEDIATELY PRIOR TO PLACING THE PROPOSED HMA COURSES.
- TAPER THE TEMP. RAMP AT A RATE OF 3' - 4" (1.02m) PER 1 INCH (25 mm) OF MILLING THICKNESS.
 - * SEE TYPICAL SECTIONS FOR MILLING THICKNESS.
- SEE ARTICLE 406.08 AND 406.14 OF THE STANDARD SPECIFICATIONS FOR "HMA AND/OR PCC SURFACE REMOVAL, BUTT JOINT".
 - *** 20'-0" (6.1 m) PER 1 (25) RESURFACING (NOTE "A")
 - 10'-0" (3.0 m) PER 1 (25) RESURFACING (NOTE "B")

BASIS OF PAYMENT

- THE BUTT JOINT WILL BE PAID FOR AT THE CONTRACT UNIT PRICE PER SQUARE YARD (SQUARE METER) FOR "HOT-MIX ASPHALT SURFACE REMOVAL - BUTT JOINT" OR FOR "PORTLAND CEMENT CONCRETE SURFACE REMOVAL- BUTT JOINT".
- THE TEMPORARY RAMP AND SAW CUT SHALL BE INCLUDED IN THE UNIT COST FOR HMA OR PCC SURFACE REMOVAL-BUTT JOINT.

ALL DIMENSIONS ARE IN INCHES (MILLIMETERS) UNLESS OTHERWISE SHOWN.

FILE NAME: p:\work\paw_bentley.com\HW\DOT\Documents\DOT_Offices\District 1\Projects\11182022\11182022-11182022-11182022\11182022-11182022.dgn

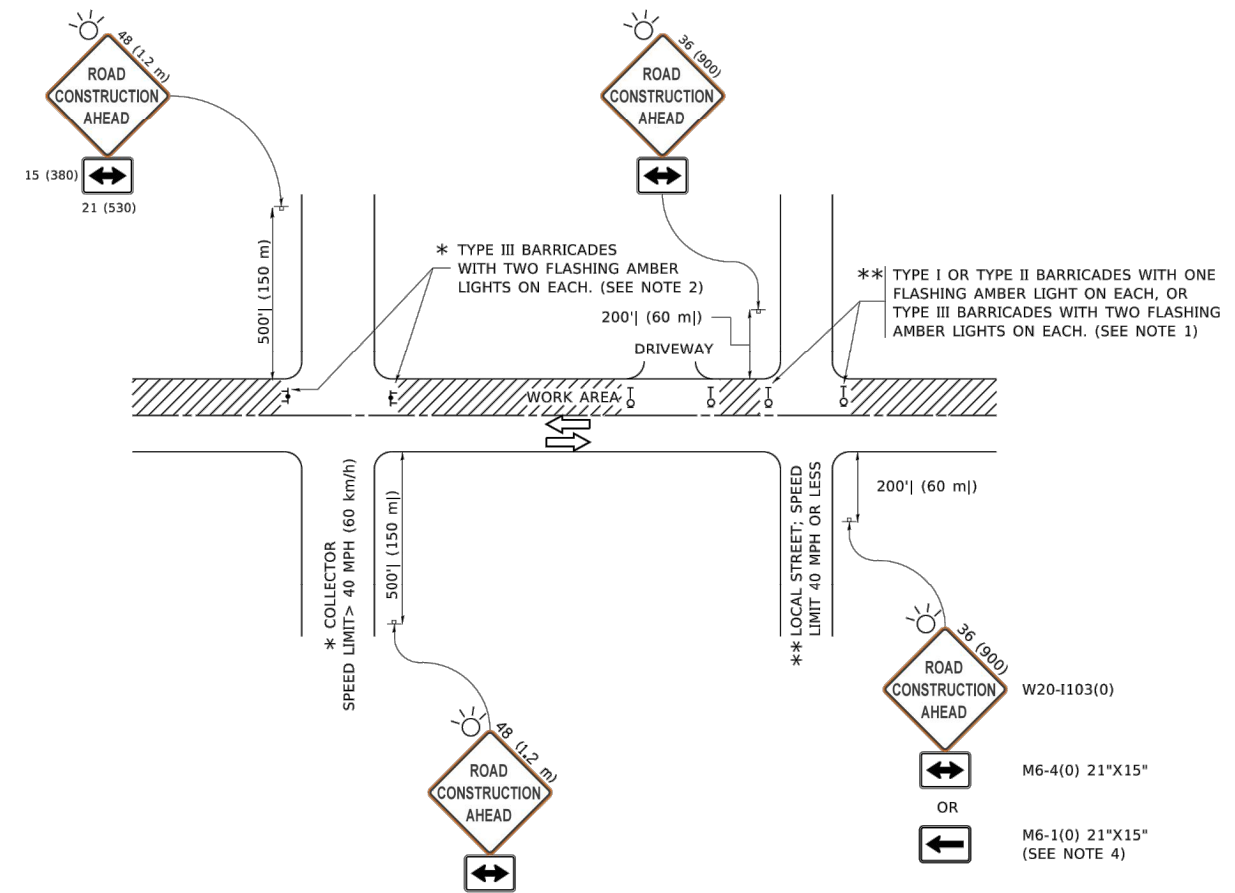
USER NAME = Lawrence.DeManche	DESIGNED - M. DE YONG	REVISED - A. ABBAS 03-21-97
	DRAWN -	REVISED - M. GOMEZ 04-06-01
PLOT SCALE = 100.0000' / in.	CHECKED -	REVISED - R. BORO 01-01-07
PLOT DATE = 11/18/2022	DATE - 06-13-90	REVISED - K. SMITH 11-18-22

STATE OF ILLINOIS DEPARTMENT OF TRANSPORTATION		BUTT JOINT AND HMA TAPER DETAILS		F.A.U. RTE.	SECTION	COUNTY	TOTAL SHEETS	SHEET NO.
				BD400-05 BD-32		CONTRACT NO.		
SCALE: NONE	SHEET 1	OF 1	SHEETS	STA.	TO STA.			

FILE NAME = 22R0506-DTSL-01 - B032	USER NAME =	DESIGNED --	REVISED --
		CHECKED --	REVISED --
	PLOT SCALE =	DRAWN --	REVISED --
	PLOT DATE =	CHECKED --	REVISED --

STATE OF ILLINOIS DEPARTMENT OF TRANSPORTATION		DISTRICT 1 DETAILS		F.A.U. RTE.	SECTION	COUNTY	TOTAL SHEETS	SHEET NO.
				0282	22-00077-00-RS	WILL	20	13
SCALE:	SHEET NO. 13	OF 20	SHEETS	STA.	TO STA.		CONTRACT NO. 61J62	
				FED. ROAD DIST. NO. 1	ILLINOIS	FED. AID PROJECT	E1D(653)	

FILE NAME: P:\110848\BID\NTEG\Illinois.gov\PWIDOT\Documents\DOT_Offices\District_1\Projects\Dissemination\CAD\Drawings\TC10.dgn



NOTES:

1. SIDE ROAD WITH A SPEED LIMIT OF 40 MPH (60 km/h) OR LESS AS SHOWN ON THE DRAWING AND AS DIRECTED BY THE ENGINEER:
 - a) ONE "ROAD CONSTRUCTION AHEAD" SIGN 36 x 36 (900x900) WITH A FLASHER MOUNTED ON IT APPROXIMATELY 200' (60 m) IN ADVANCE OF THE MAIN ROUTE.
 - b) THE CLOSED PORTION OF THE MAIN ROUTE SHALL BE PROTECTED BY BLOCKING WITH TYPE I, TYPE II OR TYPE III BARRICADES, 1/3 OF THE CROSS SECTION OF THE CLOSED PORTION.
2. SIDE ROAD WITH A SPEED LIMIT GREATER THAN 40 MPH (60 km/h) AS SHOWN ON THE DRAWING AND AS DIRECTED BY THE ENGINEER:
 - a) ONE "ROAD CONSTRUCTION AHEAD" SIGN 48 x 48 (1.2 m x 1.2 m) WITH A FLASHER MOUNTED ON IT APPROXIMATELY 500' (150 m) IN ADVANCE OF THE MAIN ROUTE.
 - b) THE CLOSED PORTION OF THE MAIN ROUTE SHALL BE PROTECTED BY BLOCKING WITH TYPE III BARRICADES, 1/2 OF THE CROSS SECTION OF THE CLOSED PORTION.
3. CONES MAY BE SUBSTITUTED FOR BARRICADES OR DRUMS AT HALF THE SPACING DURING DAY OPERATIONS. CONES SHALL BE A MINIMUM OF 28 (710) IN HEIGHT.
4. SIGNING AND THE WORK ZONE, A SINGLE HEADED ARROW (M6-1) SHALL BE USED IN LIEU OF THE DOUBLE HEADED ARROW (M6-4).
5. WHEN WORK IS BEING PERFORMED ON A SIDE ROAD OR DRIVEWAY, FOLLOW THE APPLICABLE STANDARD(S). THE DIRECTIONAL ARROW (M6-1 OR M6-4) SHALL BE COVERED OR REMOVED WHEN NO LONGER CONSISTENT WITH THE TRAFFIC CONTROL SET-UP.
6. ADVANCE WARNING SIGNS ARE TO BE OMITTED ON DRIVEWAYS UNLESS OTHERWISE SPECIFIED IN THE PLANS OR BY THE ENGINEER.
7. THE TRAFFIC CONTROL AND PROTECTION FOR SIDE ROADS, INTERSECTIONS, AND DRIVEWAYS SHALL BE INCLUDED IN THE COST OF SPECIFIED TRAFFIC CONTROL STANDARDS OR ITEMS.

All dimensions are in inches (millimeters) unless otherwise shown.

USER NAME = fo0temj	DESIGNED - L.H.A.	REVISED - A. HOUSEH 10-15-96
PLOT SCALE = 50.0000' / in.	CHECKED -	REVISED - T. RAMMACHER 01-06-00
PLOT DATE = 3/4/2019	DATE - 06-89	REVISED - A. SCHUETZE 07-01-13
		REVISED - A. SCHUETZE 09-15-16

**STATE OF ILLINOIS
DEPARTMENT OF TRANSPORTATION**

**TRAFFIC CONTROL AND PROTECTION FOR
SIDE ROADS, INTERSECTIONS, AND DRIVEWAYS**

F.A.U. RTE.	SECTION	COUNTY	TOTAL SHEETS	SHEET NO.
TC-10			CONTRACT NO.	
ILLINOIS FED. AID PROJECT				

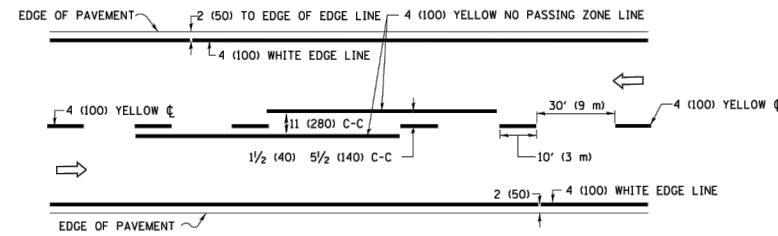
FILE NAME = 22R0506-DTLS-01 - TC10

USER NAME =	DESIGNED --	REVISED --
	CHECKED --	REVISED --
PLOT SCALE =	DRAWN --	REVISED --
PLOT DATE =	CHECKED --	REVISED --

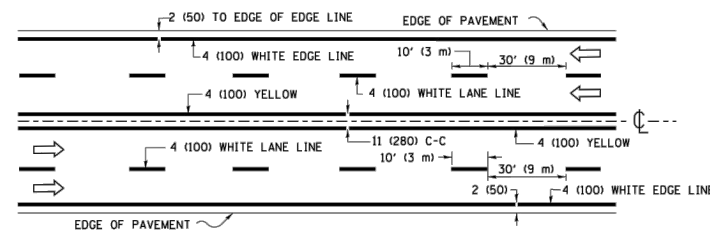
**STATE OF ILLINOIS
DEPARTMENT OF TRANSPORTATION**

DISTRICT 1 DETAILS

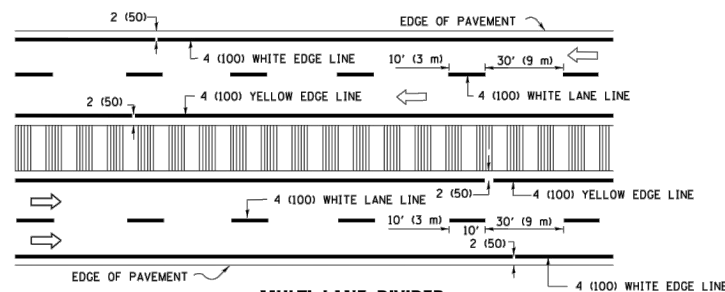
SCALE:	SHEET NO. 14 OF 20 SHEETS	STA.	TO STA.	F.A.U. RTE.	SECTION	COUNTY	TOTAL SHEETS	SHEET NO.
				0282	22-00077-00-RS	WILL	20	14
				CONTRACT NO. 61J62				
				FED. ROAD DIST. NO. 1 ILLINOIS FED. AID PROJECT E1D(653)				



2-LANE ROADWAY

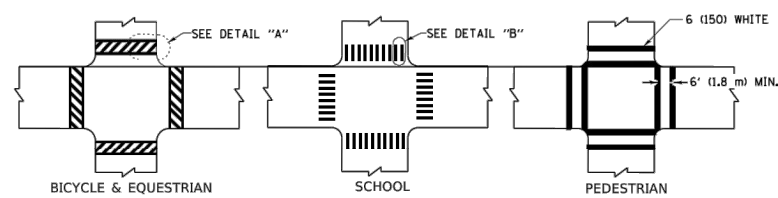


MULTI-LANE UNDIVIDED



MULTI-LANE DIVIDED WITH MEDIAN

TYPICAL LANE AND EDGE LINE MARKING

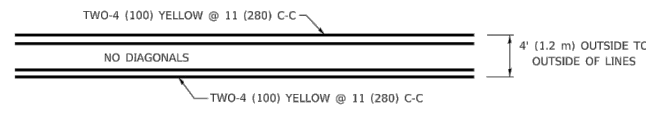


DETAIL "A"

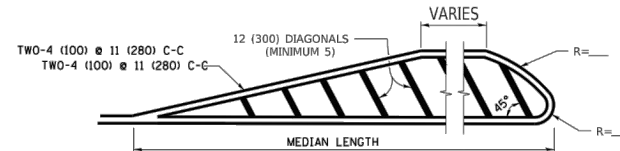
DETAIL "B"

TYPICAL CROSSWALK MARKING

* MARKINGS SHALL BE INSTALLED PARALLEL TO THE CENTERLINE OF THE ROAD WHICH IT CROSSES



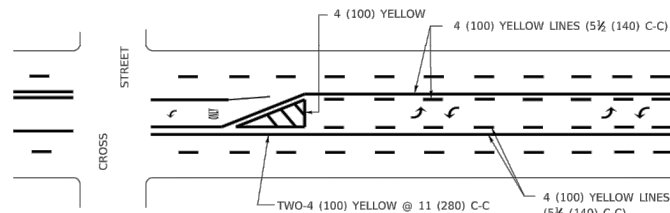
4' (1.2 m) WIDE MEDIANS ONLY



FOR MEDIAN LENGTHS WHERE DIAGONAL SPACING CANNOT BE ATTAINED, USE 5 (FIVE) EQUALLY SPACED DIAGONAL LINES.

DIAGONAL LINE SPACING: 50' (15 m) C-C (LESS THAN 30MPH (50 km/h))
75' (25 m) C-C 30MPH (50 km/h) TO 45MPH (70 km/h)
150' (45 m) C-C (MORE THAN 45MPH (70 km/h))

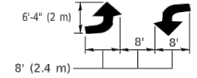
MEDIANS OVER 4' (1.2 m) WIDE



MEDIAN WITH TWO-WAY LEFT TURN LANE

TYPICAL PAINTED MEDIAN MARKING

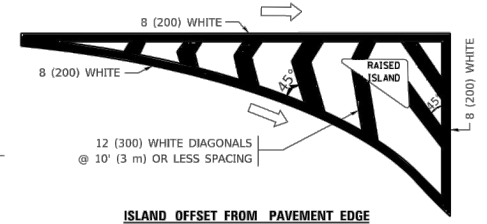
A MINIMUM OF TWO PAIRS OF TURN ARROWS SHALL BE USED, WHITE IN COLOR. ADDITIONAL PAIRS SHALL BE PLACED AT 200' (60 m) TO 300' (90 m) INTERVALS.



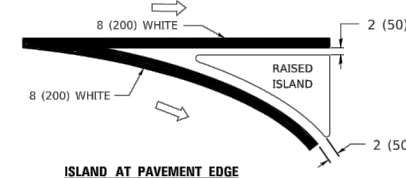
TYPICAL LEFT (OR RIGHT) TURN LANE

TYPICAL TURN LANE MARKING

FULL SIZE LETTERS 8' (2.4 m) AND ARROWS SHALL BE USED.
AREA = 15.6 SQ. FT. (1.5 m²) ONLY AREA = 20.8 SQ. FT. (1.9 m²)
* TURN LANES IN EXCESS OF 400' (120 m) IN LENGTH MAY HAVE AN ADDITIONAL SET OF ARROW - "ONLY" INSTALLED MIDWAY BETWEEN THE OTHER TWO SETS OF ARROW - "ONLY".

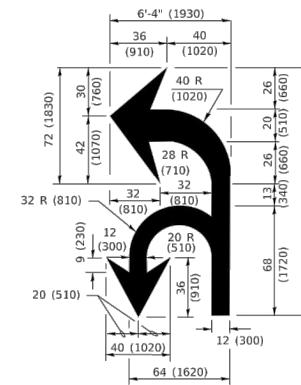


ISLAND OFFSET FROM PAVEMENT EDGE

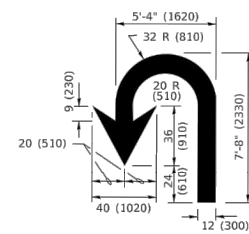


ISLAND AT PAVEMENT EDGE

TYPICAL ISLAND MARKING



COMBINATION LEFT AND U-TURN



U-TURN

LANE REDUCTION TRANSITION

* LANE REDUCTION ARROWS REQUIRED AT SPEEDS OF 45 MPH OR GREATER OR WHEN SPECIFIED IN PLANS.

D(FT)	SPEED LIMIT
345	30
425	35
500	40
580	45
665	50
750	55

TYPE OF MARKING	WIDTH OF LINE	PATTERN	COLOR	SPACING / REMARKS
CENTERLINE ON 2 LANE PAVEMENT	4 (100)	SKIP-DASH	YELLOW	10' (3 m) LINE WITH 30' (9 m) SPACE
CENTERLINE ON MULTI-LANE UNDIVIDED PAVEMENT	2 @ 4 (100)	SOLID	YELLOW	11 (280) C-C
NO PASSING ZONE LINES: FOR ONE DIRECTION FOR BOTH DIRECTIONS	4 (100) 2 @ 4 (100)	SOLID SOLID	YELLOW YELLOW	5 1/2 (140) C-C FROM SKIP-DASH CENTERLINE 11 (280) C-C OMIT SKIP-DASH CENTERLINE BETWEEN
LANE LINES	4 (100) 5 (125) ON FREEWAYS	SKIP-DASH SKIP-DASH	WHITE WHITE	10' (3 m) LINE WITH 30' (9 m) SPACE
DOTTED LINES (EXTENSIONS OF CENTER, LANE OR TURN LANE MARKINGS)	SAME AS LINE BEING EXTENDED	SKIP-DASH	SAME AS LINE BEING EXTENDED	2' (600) LINE WITH 6' (1.8 m) SPACE
EDGE LINES	4 (100)	SOLID	YELLOW-LEFT WHITE-RIGHT	OUTLINE MEDIANS IN YELLOW
TURN LANE MARKINGS	6 (150) LINE: FULL SIZE LETTERS & SYMBOLS (8' (2.4m))	SOLID	WHITE	SEE TYPICAL TURN LANE MARKING DETAIL
TWO WAY LEFT TURN MARKING	2 @ 4 (100) EACH DIRECTION 8' (2.4m) LEFT ARROW	SKIP-DASH AND SOLID IN PAIRS	YELLOW WHITE	10' (3 m) LINE WITH 30' (9 m) SPACE FOR SKIP-DASH; 5 1/2 (140) C-C BETWEEN SOLID LINE AND SKIP-DASH LINE SEE TYPICAL TWO-WAY LEFT TURN MARKING DETAIL
CROSSWALK LINES (PEDESTRIAN) A. DIAGONALS (BIKE & EQUESTRIAN) B. LONGITUDINAL BARS (SCHOOL)	2 @ 6 (150) 12 (300) @ 45° 12 (300) @ 90°	SOLID SOLID SOLID	WHITE WHITE WHITE	NOT LESS THAN 6' (1.8 m) APART 2' (600) APART 2' (600) APART SEE TYPICAL CROSSWALK MARKING DETAILS.
STOP LINES	24 (600)	SOLID	WHITE	PLACE 4' (1.2 m) IN ADVANCE OF AND PARALLEL TO CROSSWALK, IF PRESENT. OTHERWISE, PLACE AT DESIRED STOPPING POINT. PARALLEL TO CROSSROAD CENTERLINE, WHERE POSSIBLE
PAINTED MEDIANS	2 @ 4 (100) WITH 12 (300) DIAGONALS @ 45° NO DIAGONALS USED FOR 4' (1.2 m) WIDE MEDIANS	SOLID	YELLOW: TWO WAY TRAFFIC WHITE: ONE WAY TRAFFIC	11 (280) C-C FOR THE DOUBLE LINE SEE TYPICAL PAINTED MEDIAN MARKING.
GORE MARKING AND CHANNELIZING LINES	8 (200) WITH 12 (300) DIAGONALS @ 45°	SOLID	WHITE	DIAGONALS: 15' (4.5 m) C-C (LESS THAN 30MPH (50 km/h)) 20' (6 m) C-C 30MPH (50 km/h) TO 45MPH (70 km/h) 30' (9 m) C-C (OVER 45MPH (70 km/h))
RAILROAD CROSSING	24 (600) TRANSVERSE LINES; "RR" IS 6' (1.8 m) LETTERS; 16 (400) LINE FOR "X"	SOLID	WHITE	SEE STATE STANDARD 780001 AREA OF: "R"=3.6 SQ. FT. (0.33 m ²) EACH "X"=54.0 SQ. FT. (5.0 m ²)
SHOULDER DIAGONALS (REQUIRED FOR SHOULDERS > 8')	12 (300) @ 45°	SOLID	WHITE - RIGHT YELLOW - LEFT	50' (15 m) C-C (LESS THAN 30MPH (50 km/h)) 75' (25 m) C-C (30 MPH (50 km/h) TO 45MPH (70 km/h)) 150' (45 m) C-C (OVER 45MPH (70 km/h))
U TURN ARROW	SEE DETAIL	SOLID	WHITE	16.3 SF
2 ARROW COMBINATION LEFT AND U TURN	SEE DETAIL	SOLID	WHITE	30.4 SF

FOR FURTHER DETAILS ON PAVEMENT MARKING REFER TO STANDARD SPECIFICATIONS FOR ROAD AND BRIDGE CONSTRUCTION AND STATE STANDARD 780001.

All dimensions are in inches (millimeters) unless otherwise shown.

USER NAME = fo0temj	DESIGNED - EVERS	REVISED - C. JUCIUS 09-09-09	STATE OF ILLINOIS DEPARTMENT OF TRANSPORTATION	DISTRICT ONE TYPICAL PAVEMENT MARKINGS	F.A. RTE.	SECTION	COUNTY	TOTAL SHEETS	SHEET NO.	
PLOT SCALE = 50.0000" / in.	CHECKED -	REVISED - C. JUCIUS 07-01-13			TC-13					
PLOT DATE = 3/4/2019	DATE - 03-19-90	REVISED - C. JUCIUS 12-21-15			ILLINOIS					
		REVISED - C. JUCIUS 04-12-16			CONTRACT NO.					

FILE NAME = 22R0506-DTLS-01 - TC13	USER NAME =	DESIGNED -	REVISED -	STATE OF ILLINOIS DEPARTMENT OF TRANSPORTATION	DISTRICT 1 DETAILS	F.A.U. RTE.	SECTION	COUNTY	TOTAL SHEETS	SHEET NO.	
	CHECKED -	REVISED -	REVISED -			0282					
	DRAWN -	REVISED -	REVISED -			22-00077-00-RS					
	CHECKED -	REVISED -	REVISED -			WILL					

TURN BAY ENTRANCE AT START OF LANE CLOSURE TAPER

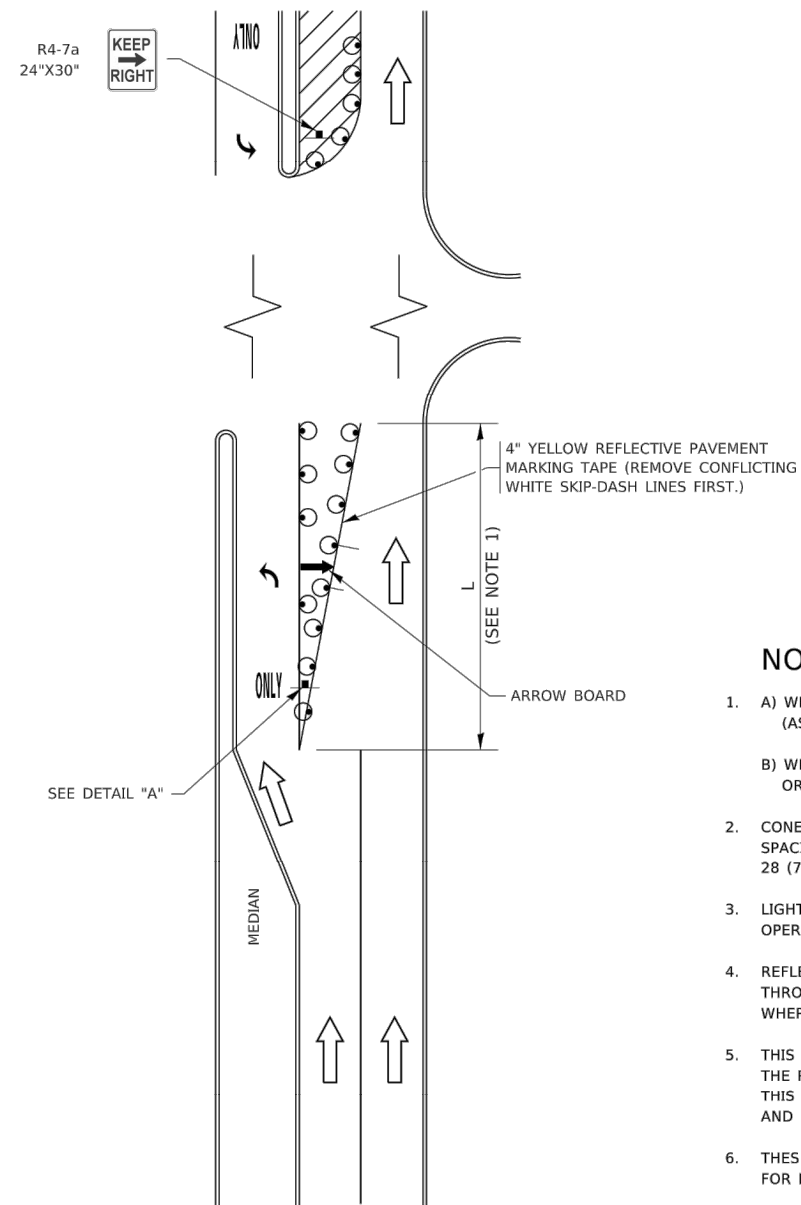
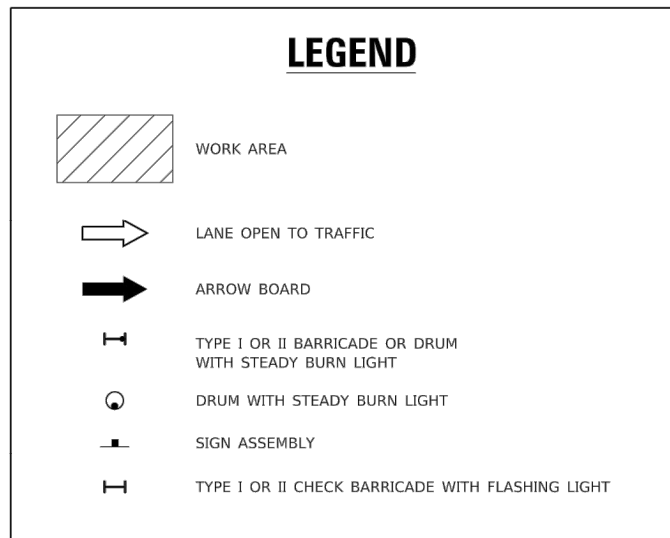


FIGURE 1

LEGEND



NOTES:

1. A) WHEN "L" IS ≤ THE STORAGE LENGTH OF THE TURN LANE (AS SHOWN IN FIG. 1), USE FIGURE 1.
B) WHEN "L" IS > THE STORAGE LENGTH OF THE TURN LANE OR THE TURN LANE IS WITHIN THE LANE CLOSURE, USE FIGURE 2.
2. CONES MAY BE SUBSTITUTED FOR BARRICADES OR DRUMS AT HALF THE SPACING DURING DAY OPERATIONS. CONES SHALL BE A MINIMUM OF 28 (710) IN HEIGHT.
3. LIGHTS WILL NOT BE REQUIRED ON BARRICADES OR DRUMS FOR DAY OPERATIONS. ALL LIGHTS SHALL BE MONODIRECTIONAL.
4. REFLECTIVE TEMPORARY PAVEMENT MARKINGS SHALL BE PLACED THROUGHOUT THE BARRICADED AREAS OF EACH TURN BAY AS SHOWN WHERE THE CLOSURE TIME IS GREATER THAN FOURTEEN (14) DAYS.
5. THIS APPLICATION ALSO APPLIES WHEN WORK IS BEING PERFORMED IN THE RIGHT LANE(S) AND THE RIGHT TURN BAY IS TO REMAIN OPEN. UNDER THIS CONDITION, "RIGHT TURN LANE" R3-1100R 24 x 24 (600 x 600) AND M6-2R 21 x 15 (530 x 380) SHALL BE USED.
6. THESE CONTROLS SHALL SUPPLEMENT MAINLINE TRAFFIC CONTROL FOR LANE CLOSURES.
7. THE SIGNS SHALL BE MOUNTED ABOVE THE BARRICADES/DRUMS ON SEPARATE SIGN SUPPORTS THAT MEET NCHRP 350 OR MASH REQUIREMENTS.
8. TRAFFIC CONTROL AND PROTECTION AT TURN BAYS (TO REMAIN OPEN TO TRAFFIC) SHALL BE INCLUDED IN THE COST OF SPECIFIED TRAFFIC CONTROL STANDARDS OR ITEMS.

TURN BAY ENTRANCE WITHIN A LANE CLOSURE

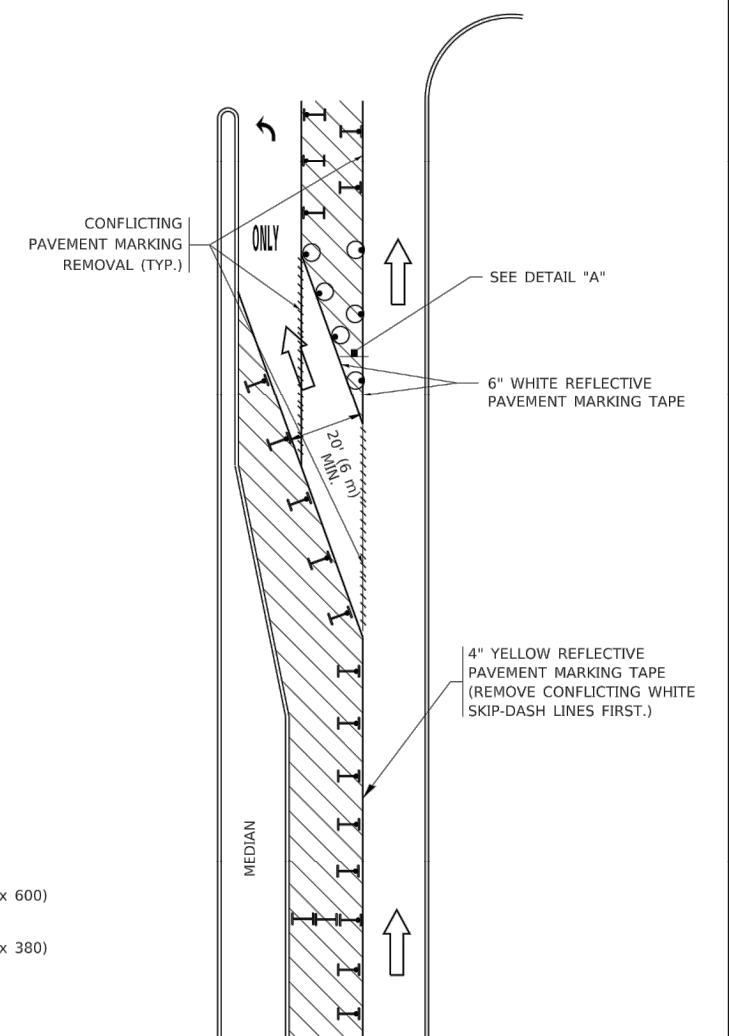
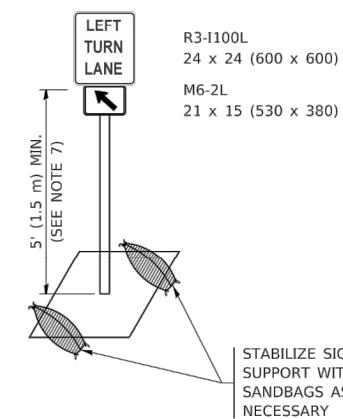


FIGURE 2



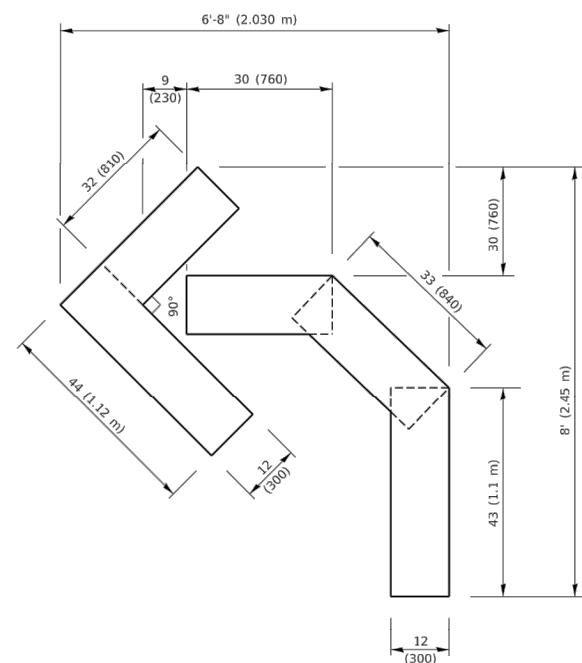
DETAIL A

All dimensions are in inches (millimeters) unless otherwise shown.

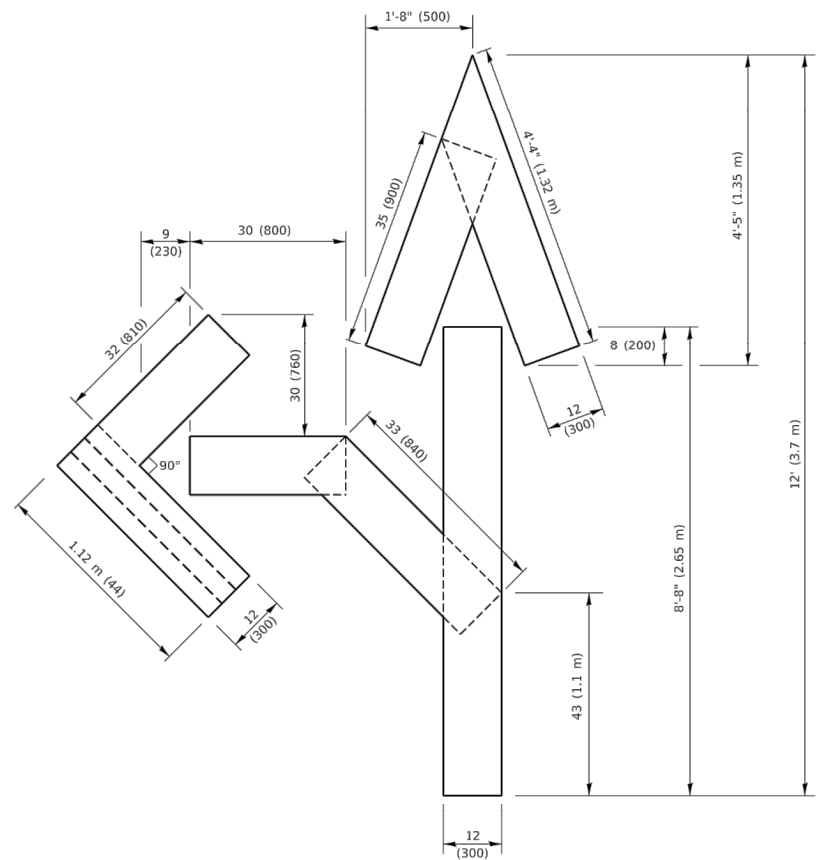
FILE NAME: P:\110848\BID\NTEC\Illinois\gov\PIV\DOT\Documents\DOT\Office\District_1\Projects\BIS\BIS22-24\CADD\NTEC\CADD\NTEC14.dgn

USER NAME = foeternj	DESIGNED - T. RAMMACHER 09-08-94	REVISED - R. BORO 09-14-09	STATE OF ILLINOIS DEPARTMENT OF TRANSPORTATION	TRAFFIC CONTROL AND PROTECTION AT TURN BAYS (TO REMAIN OPEN TO TRAFFIC)	F.A. RTE.	SECTION	COUNTY	TOTAL SHEETS	SHEET NO.	
PLOT SCALE = 50.0000' / in.	CHECKED - A. HOUSEH 10-12-96	REVISED - A. SCHUETZE 09-15-16			TC-14 CONTRACT NO.					
PLOT DATE = 3/4/2019	DATE - T. RAMMACHER 01-06-00	REVISED -			ILLINOIS FED. AID PROJECT					

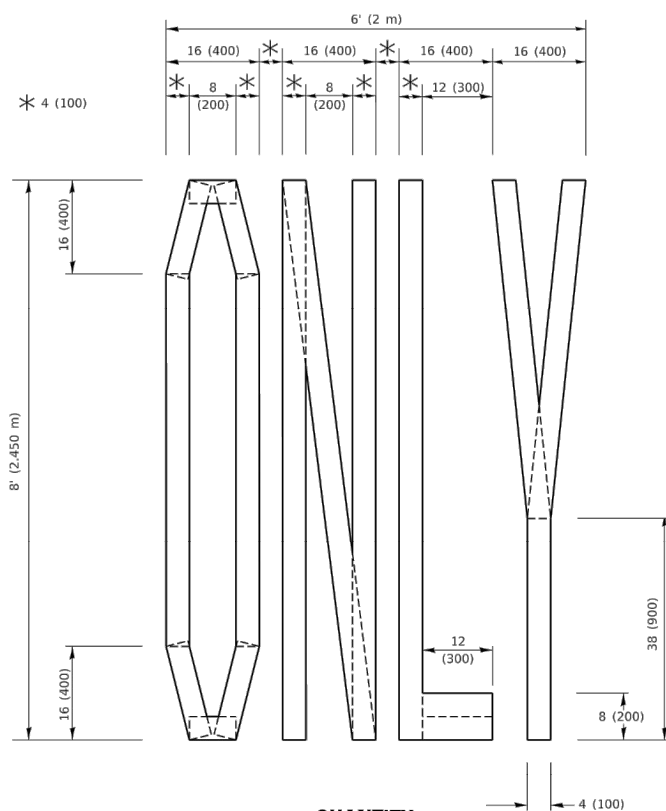
FILE NAME = 22R0506-DTLS-01 - TC14	USER NAME =	DESIGNED --	REVISED --	STATE OF ILLINOIS DEPARTMENT OF TRANSPORTATION	DISTRICT 1 DETAILS	F.A.U. RTE.	SECTION	COUNTY	TOTAL SHEETS	SHEET NO.	
	CHECKED --	REVISED --				22-00077-00-RS WILL 20 16					
	PLOT SCALE =	DRAWN --	REVISED --			CONTRACT NO. 61J62					
	PLOT DATE =	CHECKED --	REVISED --			FED. ROAD DIST. NO. 1 ILLINOIS FED. AID PROJECT E1D(653)					



QUANTITY
 4 (100) LINE = 45.5 ft. (13.9 m)
 15.2 sq. ft. (1.41 sq. m)

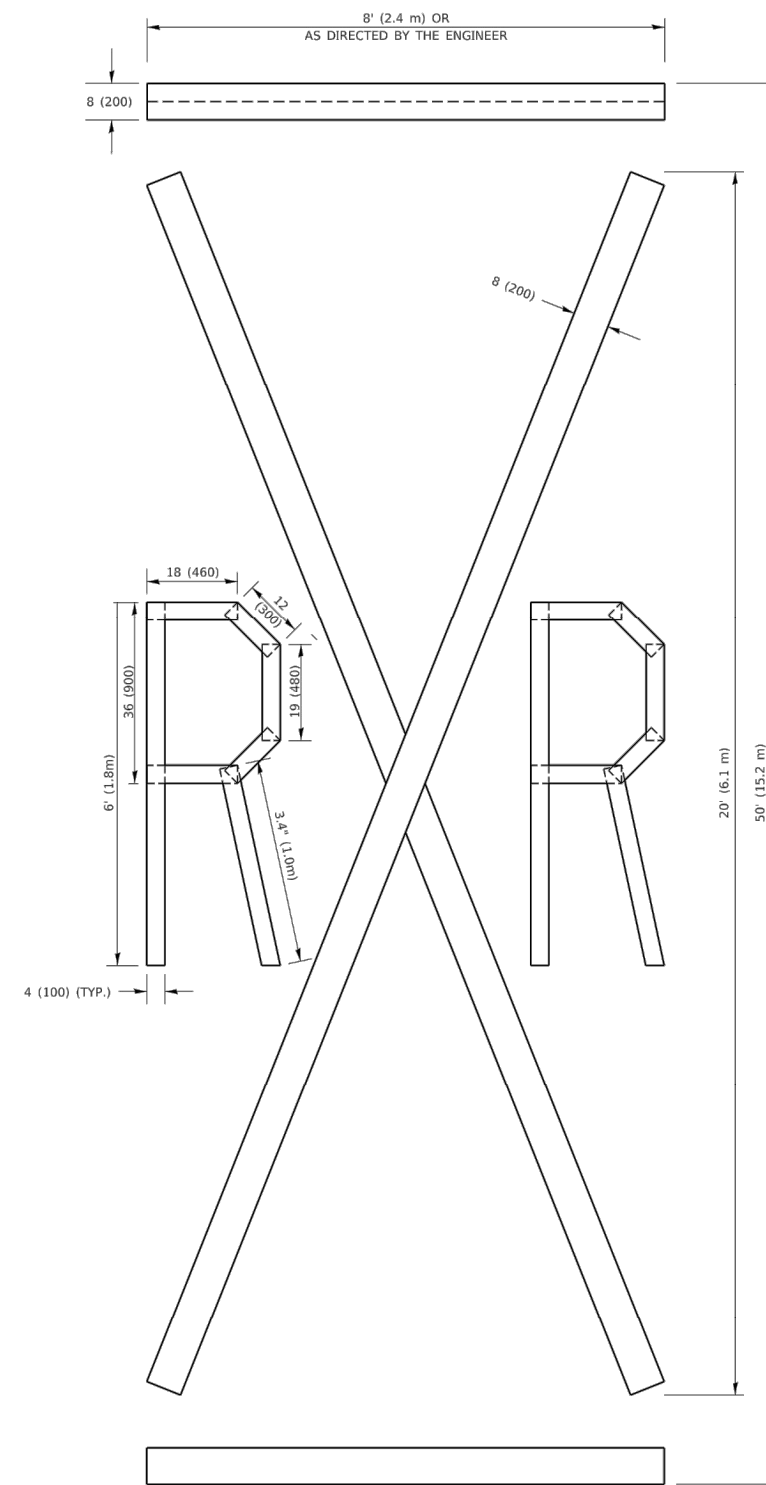


QUANTITY
 4 (100) LINE = 82.5 ft. (25.1 m)
 27.5 sq. ft. (2.53 sq. m)



QUANTITY
 4 (100) LINE = 64.1 ft. (19.5 m)
 21.4 sq. ft. (1.99 sq. m)

NOTE:
 ALL QUANTITIES OF PLACEMENT ARE REPRESENTED
 IN LINEAR FEET OF 4" LINES TO MATCH THE
 4" TEMPORARY TAPE PAY ITEM AND REPRESENTS
 THE TOTAL QUANTITY OF 4" TAPE REQUIRED.



QUANTITY
 4 (100) LINE = 225.9 ft. (68.9 m)
 75.3 sq. ft. (6.99 sq. m)

All dimensions are in inches (millimeters)
 unless otherwise shown.

FILE NAME: P:\11084\FEBINDNTEG.illinois.gov\FWIDOT\Documents\DOT_Offices\District_1\Projects\05HS0224\CAD\Drawn\CADsheet16.dgn

USER NAME = footemj	DESIGNED -	REVISED - T. RAMMACHER 03-02-98
PLOT SCALE = 50.0068 ' / in.	DRAWN -	REVISED - E. GOMEZ 08-28-00
PLOT DATE = 3/4/2019	CHECKED -	REVISED - E. GOMEZ 08-28-00
	DATE - 09-18-94	REVISED - A. SCHUETZE 09-15-16

**STATE OF ILLINOIS
 DEPARTMENT OF TRANSPORTATION**

SHORT TERM PAVEMENT MARKING LETTERS AND SYMBOLS

SCALE: NONE SHEET 1 OF 1 SHEETS STA. TO STA.

F.A.U. RTE.	SECTION	COUNTY	TOTAL SHEETS	SHEET NO.
	TC-16			
ILLINOIS FED. AID PROJECT			CONTRACT NO.	

FILE NAME = 22R0506-DTLS-01 - TC16

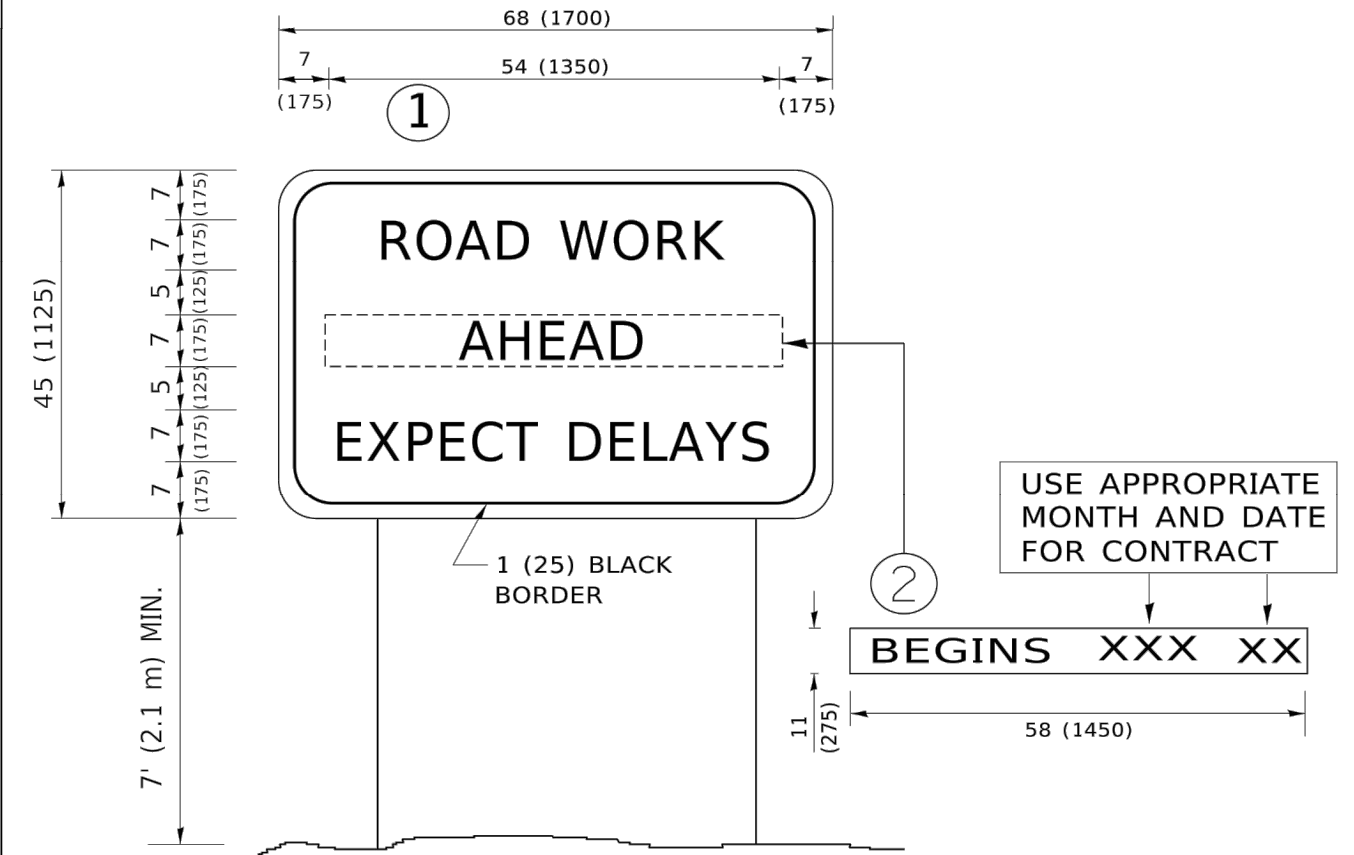
USER NAME =	DESIGNED --	REVISED --
PLOT SCALE =	CHECKED --	REVISED --
PLOT DATE =	DRAWN --	REVISED --
	CHECKED --	REVISED --

**STATE OF ILLINOIS
 DEPARTMENT OF TRANSPORTATION**

DISTRICT 1 DETAILS

SCALE: SHEET NO. 17 OF 20 SHEETS STA. TO STA.

F.A.U. RTE.	SECTION	COUNTY	TOTAL SHEETS	SHEET NO.
0282	22-00077-00-RS	WILL	20	17
FED. ROAD DIST. NO. 1 ILLINOIS FED. AID PROJECT E1D(653)			CONTRACT NO. 61J62	



NOTES:

1. USE BLACK LETTERING ON ORANGE BACKGROUND.
2. ERECT SIGNS IN ADVANCE OF THE LOCATION FOR THE "ROAD CONSTRUCTION AHEAD" SIGN AT LOCATIONS AS DIRECTED BY THE ENGINEER.
3. ERECT SIGN ① WITH INSTALLED PANEL ② ONE WEEK PRIOR TO THE START OF CONSTRUCTION.
4. REMOVE PANEL ② SOON AFTER THE START OF CONSTRUCTION.
5. SEE SPECIAL PROVISION FOR "TEMPORARY INFORMATION SIGNING" FOR ADDITIONAL INFORMATION.
6. ONE SIGN ASSEMBLY EQUALS 25.70 SQ. FT. (2.3 SQ. M.)
7. SHALL BE PAID FOR AS TEMPORARY INFORMATION SIGNING.

ALL DIMENSIONS ARE IN INCHES (MILLIMETERS) UNLESS OTHERWISE SHOWN.

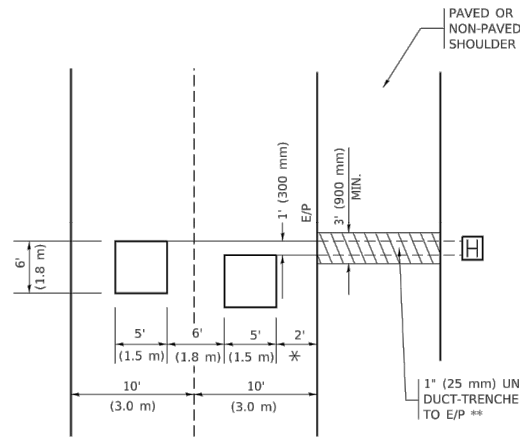
FILE NAME: P:\110848\BID\NTEG_IL\mohr.gov\FWID\DOT\Documents\DOT_Offices\District_1\Projects\Dist565022\34\CAD\Drawn\CAD\Sheet\TC22.dgn

USER NAME = footej	DESIGNED -	REVISED - R. MIRS 09-15-97	STATE OF ILLINOIS DEPARTMENT OF TRANSPORTATION	ARTERIAL ROAD INFORMATION SIGN			F.A.U. RTE.	SECTION	COUNTY	TOTAL SHEETS	SHEET NO.
PLOT SCALE = 50.0000' / in.	DRAWN -	REVISED - R. MIRS 12-11-97		SCALE: NONE SHEET 1 OF 1 SHEETS STA. TO STA.			TC-22 CONTRACT NO.				
PLOT DATE = 3/4/2019	CHECKED -	REVISED - T. RAMMACHER 02-02-99		ILLINOIS FED. AID PROJECT							
	DATE -	REVISED - C. JUCIUS 01-31-07									

FILE NAME = 22R0506-DTL5-01 - TC22	USER NAME =	DESIGNED --	REVISED --	STATE OF ILLINOIS DEPARTMENT OF TRANSPORTATION	DISTRICT 1 DETAILS			F.A.U. RTE.	SECTION	COUNTY	TOTAL SHEETS	SHEET NO.
		CHECKED --	REVISED --		SCALE: SHEET NO. 18 OF 20 SHEETS STA. TO STA.			0282 22-00077-00-RS WILL 20 18				
	PLOT SCALE =	DRAWN --	REVISED --		FED. ROAD DIST. NO. 1 ILLINOIS FED. AID PROJECT E1D(653)							
	PLOT DATE =	CHECKED --	REVISED --									

LOOPS NEXT TO SHOULDERS

PROVIDE A PAVEMENT REPLACEMENT NOTE WHICH SHOULD EQUAL 3' (900 mm) X WIDTH OF PAVED SHOULDER.

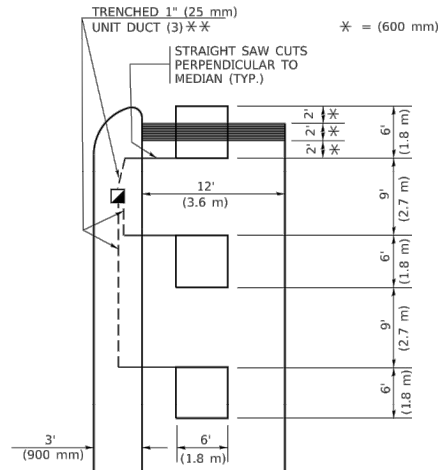


* = (600 mm)

** UNIT DUCT IS TO BE SHOWN ON PLAN SHEETS BUT SHALL NOT BE INCLUDED IN THE PAY ITEMS.

LEFT TURN LANES WITH MEDIANS
VOLUME DENSITY ("FAR OUT" DETECTION)
ON SAME APPROACH
(PROTECTED / PERMITTED LEFT TURN PHASING)

HANDHOLE LOCATION MAY VARY DEPENDING ON GEOMETRICS AND DESIGN OF TRAFFIC SIGNALS. HEAVY-DUTY HANDHOLES TO BE USED WHEN THE MEDIAN IS MOUNTABLE. REFER TO STANDARD 814001 TO ENSURE THAT HANDHOLE FITS IN MEDIAN.

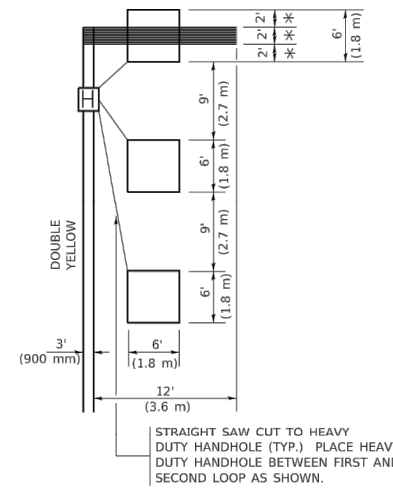


** UNIT DUCT IS TO BE SHOWN ON PLAN SHEETS BUT SHALL NOT BE INCLUDED IN THE PAY ITEMS.

NOTE: DUAL LEFT TURNS NOT SHOWN REFER TO PLAN SHEET FOR DETECTOR LOOP REPLACEMENT

LEFT TURN LANES WITHOUT MEDIANS
VOLUME DENSITY ("FAR OUT" DETECTION)
ON SAME APPROACH
(PROTECTED / PERMITTED LEFT TURN PHASING)

* = (600 mm)



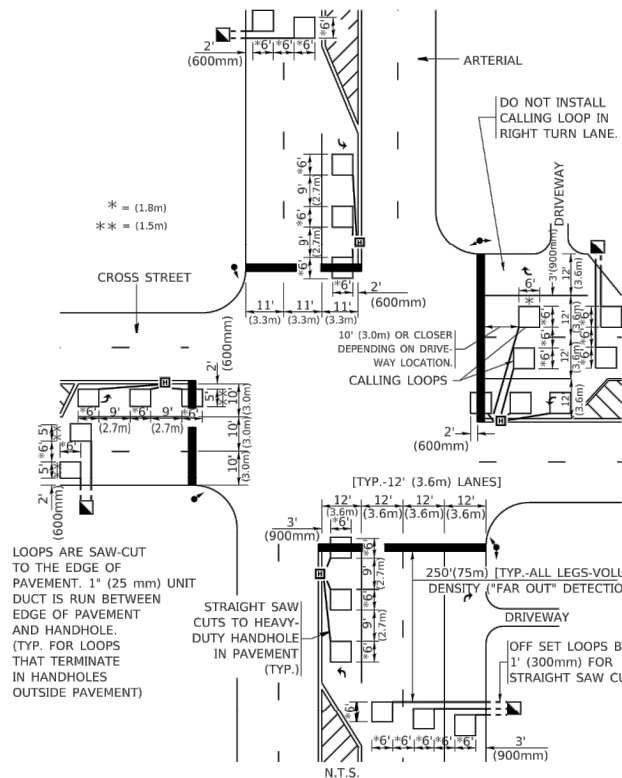
NOTE: DUAL LEFT TURNS NOT SHOWN REFER TO PLAN SHEET FOR DETECTOR LOOP REPLACEMENT

NOTES:

VEHICLES LOOP DETECTORS

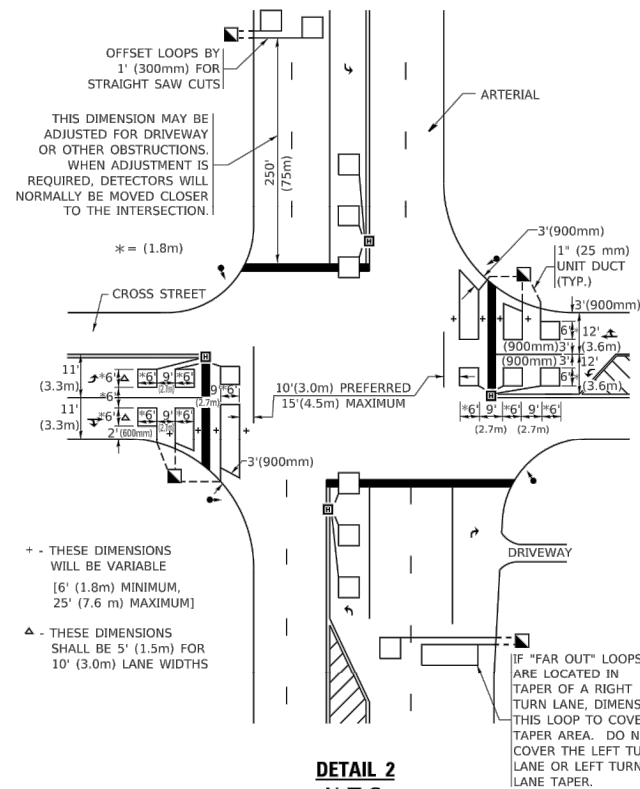
- * ALL LEAD IN CABLE SHALL BE TWO CONDUCTOR NO. 14 TWISTED, SHIELDED.
- * EACH DETECTOR LOOP SHALL HAVE ITS OWN SAW CUT FROM THE LOOP TO THE EDGE OF PAVEMENT OR TO A HANDHOLE IN THE PAVEMENT.
- * EACH DETECTOR LOOP SHALL HAVE ITS OWN ONE INCH (25 mm) UNIT DUCT BETWEEN THE EDGE OF PAVEMENT AND THE FIRST HANDHOLE OR JUNCTION BOX. EACH UNIT DUCT RUN SHALL BE SHOWN ON THE PLANS BY THE DESIGNER, BUT SHALL NOT BE PAID FOR SEPARATELY. THIS ITEM IS INCIDENTAL TO THE PAY ITEM FOR DETECTOR LOOPS.
- * ONE DIMENSION OF ALL DETECTOR LOOPS SHALL BE SIX FEET (1.8 m)
- * EACH LANE OF NON-LOCKING, PRESENCE DETECTION AND EACH LANE OF A DOUBLE LEFT TURN LANE REQUIRES A SEPARATE INDUCTIVE LOOP DETECTOR AND LEAD IN CABLE.
- * WHEN NON-LOCKING, PRESENCE DETECTION IS USED, MORE THAN ONE LOOP PER LANE IS REQUIRED BEHIND THE STOP BAR (i.e. 1-1/2, 1-3/4, 2).
- * WHEN SYSTEM LOOPS ARE REQUIRED ON AN APPROACH OF AN INTERSECTION, THE LOOPS USED FOR VOLUME DENSITY AND INTERSECTION TIMING SHALL ALSO BE USED AS SYSTEM DETECTORS. EACH ONE OF THESE TYPE OF LOOPS REQUIRES A SEPARATE TWO CONDUCTOR NO. 14 TWISTED SHIELDED CABLE AND A SEPARATE INDUCTIVE LOOP DETECTOR WHEN NEW CONTROLLERS ARE UTILIZED. THE DESIGNER SHALL LABEL THESE TYPES OF LOOPS AS "INTERSECTION AND SAMPLING (SYSTEM) DETECTORS" ON THE SIGNAL LAYOUT, THE INTERCONNECT PLAN AND THE SYSTEM CABLE PLAN. WHEN AN EXISTING CONTROLLER IS UTILIZED FOR THIS TYPE OF DETECTION, THE PAY ITEM "INDUCTIVE LOOP DETECTOR WITH SYSTEM OUTPUT" SHOULD BE USED.

ARTERIAL-VOLUME DENSITY ("FAR OUT" DETECTION)
CROSS STREET-NON VOLUME DENSITY ("FAR OUT" DETECTION)



DETAIL 1
N.T.S.

ARTERIAL-VOLUME DENSITY ("FAR OUT" DETECTION)
CROSS STREET-NON VOLUME DENSITY ("UPTIGHT" PRESENCE DETECTION)



DETAIL 2
N.T.S.

PLACEMENT OF DETECTORS

THE FOLLOWING FIGURES REPRESENT THE MOST COMMON DETECTOR LOOP LOCATIONS AND SIZES. ADJUSTMENTS WILL BE NECESSARY FOR SPECIFIC GEOMETRIC CONSIDERATIONS.

LOCATIONS AND DIMENSIONS OF DETECTOR LOOPS ARE REQUIRED ON ALL SIGNAL LAYOUT PLAN SHEETS.

"FAR OUT" DETECTION REFERS TO LOCKING, PRESENCE TYPE DETECTION LOCATED IN THRU LANES, RIGHT TURN LANES, AND RIGHT TURN LANE TAPER AREAS (IF APPLICABLE), USUALLY 250' (75 m) IN ADVANCE OF STOP BARS. "UPTIGHT" DETECTION REFERS TO NON-LOCKING PRESENCE TYPE DETECTION LOCATED IN ALL LANES AND 10'-15' (3.0 m-4.5 m) BEHIND THE CROSSING STREET'S EDGE OF PAVEMENT EXTENDED.

NOTE:

ALL DETAILS AND NOTES SHOWN ARE FROM THE I.D.O.T. DISTRICT 1 TRAFFIC SIGNAL DESIGN GUIDELINES DATED JANUARY 1995

THIS DRAWING HAS BEEN PREPARED TO ASSIST THE RESIDENT ENGINEER FOR ALL ROADWAY RESURFACING OR S.M.A.R.T. PROJECTS WHERE THE DIMENSIONS ARE NOT SHOWN ON THE PLANS AND THE FINAL LOCATIONS FOR CROSSWALKS OR STOP BARS ARE NOT DETERMINED.

FILE NAME: P:\11084\EBID\NTEG_ILI\mois.gov.PWID\DOT\Documents\DOT_Offices\District_1\Projects\Dist5\522-24\CAD\Drawn\CADsheets\107.dgn

USER NAME = footemj	DESIGNED -	REVISED -
PLOT SCALE = 50.0000' / in.	DRAWN -	REVISED -
PLOT DATE = 3/4/2019	CHECKED - R.K.F.	REVISED -
	DATE -	REVISED -

STATE OF ILLINOIS
DEPARTMENT OF TRANSPORTATION

DISTRICT 1 - DETECTOR LOOP INSTALLATION
DETAILS FOR ROADWAY RESURFACING

F.A. RTE.	SECTION	COUNTY	TOTAL SHEETS	SHEET NO.
TS-07			CONTRACT NO.	
ILLINOIS FED. AID PROJECT				

FILE NAME = 22R0506-DTLS-01 - TS07

USER NAME =	DESIGNED -	REVISED -
	CHECKED -	REVISED -
PLOT SCALE =	DRAWN -	REVISED -
PLOT DATE =	CHECKED -	REVISED -

STATE OF ILLINOIS
DEPARTMENT OF TRANSPORTATION

DISTRICT 1 DETAILS

SCALE:	SHEET NO. 20 OF 20 SHEETS	STA.	TO STA.
--------	---------------------------	------	---------

F.A.U. RTE.	SECTION	COUNTY	TOTAL SHEETS	SHEET NO.
0282	22-00077-00-RS	WILL	20	20
CONTRACT NO. 61J62				
FED. ROAD DIST. NO. 1 ILLINOIS FED. AID PROJECT E1D(653)				