

06-16-2023 LETTING ITEM 020

# STATE OF ILLINOIS DEPARTMENT OF TRANSPORTATION PROPOSED HIGHWAY PLANS

F.A.I. RTE.	SECTION	COUNTY	TOTAL SHEETS	SHEET NO.
FAI 88	(161-1HB-3)BJR	ROCK ISLAND	5	1
		ILLINOIS	CONTRACT NO. 64S03	

SEE SHEET 2 FOR INDEX OF SHEETS

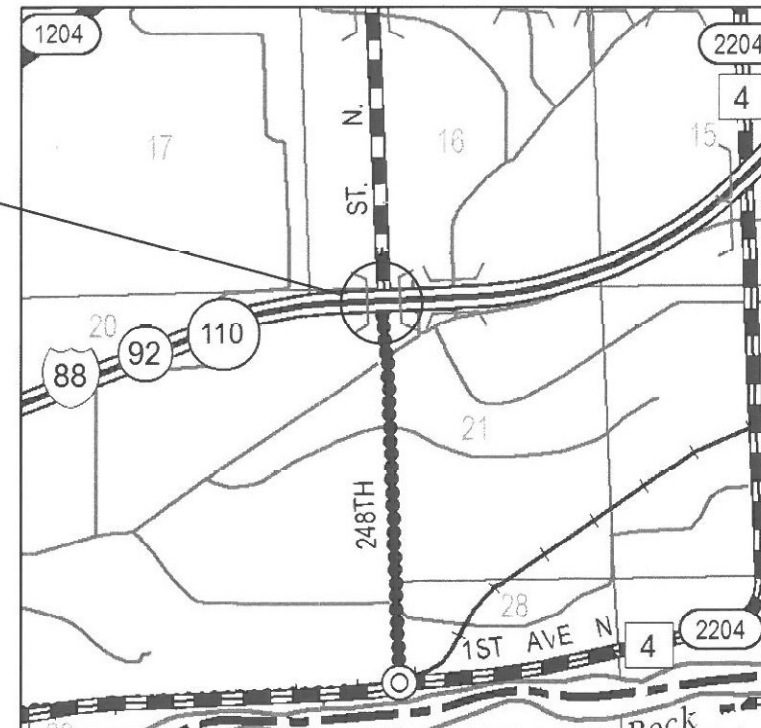
FAI ROUTE 88 (I-88)  
SECTION (161-1HB-3)BJR  
PROJECT  
BRIDGE REHABILITATION  
ROCK ISLAND COUNTY, IL

D-92-042-23



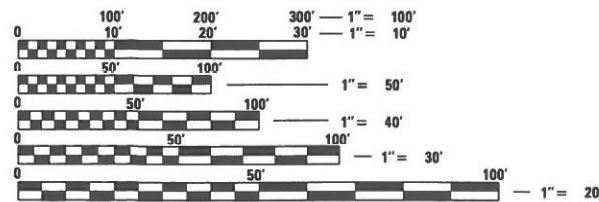
C-92-119-22

**EXISTING STRUCTURE**  
 SN 081-0121 A TWO SPAN  
 STEEL GIRDER SUPERSTRUCTURE  
 WITH CLOSED ABUTMENTS  
 BACK TO BACK LENGTH = 248'-0"  
 OUT TO OUT WIDTH = 38'



LOCATION MAP

GROSS LENGTH = 247.60 FT. = 0.05 MILE  
NET LENGTH = 247.60 FT. = 0.05 MILE



FULL SIZE PLANS HAVE BEEN PREPARED USING STANDARD ENGINEERING SCALES. REDUCED SIZE PLANS WILL NOT CONFORM TO STANDARD SCALES. IN MAKING MEASUREMENTS ON REDUCED PLANS, THE ABOVE SCALES MAY BE USED.

J.U.L.I.E.  
JOINT UTILITY LOCATION INFORMATION FOR EXCAVATION  
1-800-892-0123  
OR 811



*3/14/23*  
*EXP. 11/30/24*

PROJECT ENGINEER SCOTT WYATT, PE, SE  
PROJECT MANAGER MAHMOUD ETEMADI, PE

CONTRACT NO. 64S03

STATE OF ILLINOIS  
DEPARTMENT OF TRANSPORTATION

SUBMITTED March 20, 2023

*Mark Alwood*  
REGIONAL ENGINEER

May 12, 2023 *Scott Wyatt*  
ENGINEER OF DESIGN AND ENVIRONMENT

May 12, 2023 *Stephen M. Lewis*  
DIRECTOR OF HIGHWAYS PROJECT IMPLEMENTATION

PRINTED BY THE AUTHORITY  
OF THE STATE OF ILLINOIS

**INDEX OF SHEETS**

1. COVER SHEET
2. INDEX OF SHEETS, HIGHWAY STANDARDS AND GENERAL NOTES
3. SUMMARY OF QUANTITIES
4. PLAN AND ELEVATION
5. ABUTMENT AND JOINT REPAIRS

**STATE/DISTRICT HIGHWAY STANDARDS**

- 000001-08 STANDARDS SYMBOLS, ABBREVIATIONS AND PATTERNS
- 001006 DECIMALS OF AN INCH AND OF A FOOT
- 701901-08 TRAFFIC CONTROL DEVICES
- 701301-04 LANE CLOSURE, 2L, 2W, SHORT TIME OPERATIONS
- 701006-05 OFF-ROAD OPERATIONS, 2L, 2W, 15' (4.5m) TO 24' (600 mm) FROM PAVEMENT EDGE
- 701001-02 OFF-ROAD OPERATIONS, 2L, 2W, MORE THAN 15' (4.5m) TO 24" (600 mm) AWAY FROM PAVEMENT EDGE
- 701400-11 APPROACH TO LANE CLOSURE, FREEWAY/EXPRESSWAY
- 701406-13 LANE CLOSURE, FREEWAY/EXPRESSWAY, DAY OPERATIONS ONLY
- 40.1 D2 TRAFFIC CONTROL FOR ROAD CLOSURE
- 701011-04 OFF-RD MOVING OPERATIONS, 2L, 2W, DAY ONLY

**GENERAL NOTES**

- THE STRUCTURE NUMBER SHALL REMAIN 081-0121
- DO NOT SCALE PLANS FOR CONSTRUCTION DIMENSIONS
- TRAFFIC WILL BE DETOURED DURING CONSTRUCTION
- THE CONTRACTOR SHALL CONTACT THE IDOT DISTRICT 2 ENGINEER AT (815) 284-2271 A MINIMUM OF 72 HOURS IN ADVANCE OF BEGINNING WORK.

MODEL: Default  
 FILE NAME: \\kpff.com\dfs\bridge\2200780 (WO 13 SN 081-0121)\02\_Design (MS)\64503-02 - Index1.dgn  
 3/14/2023 10:59:15 AM



USER NAME =	DESIGNED -	REVISED -
PLOT SCALE =	CHECKED -	REVISED -
PLOT DATE =	DRAWN -	REVISED -
	CHECKED -	REVISED -

**STATE OF ILLINOIS**  
**DEPARTMENT OF TRANSPORTATION**

**248th STREET CROSSING I-88 (FAI 88)**  
**INDEX OF SHEETS, HIGHWAY STANDARDS AND GENERAL NOTES**

F.A.I. RTE.	SECTION	COUNTY	TOTAL SHEETS	SHEET NO.
88	(161-1HB-3)BJR	ROCK ISLAND	5	2
CONTRACT NO. 64503				
ILLINOIS FED. AID PROJECT				



**TOTAL BILL OF MATERIAL**

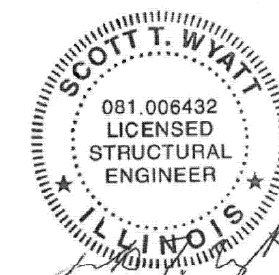
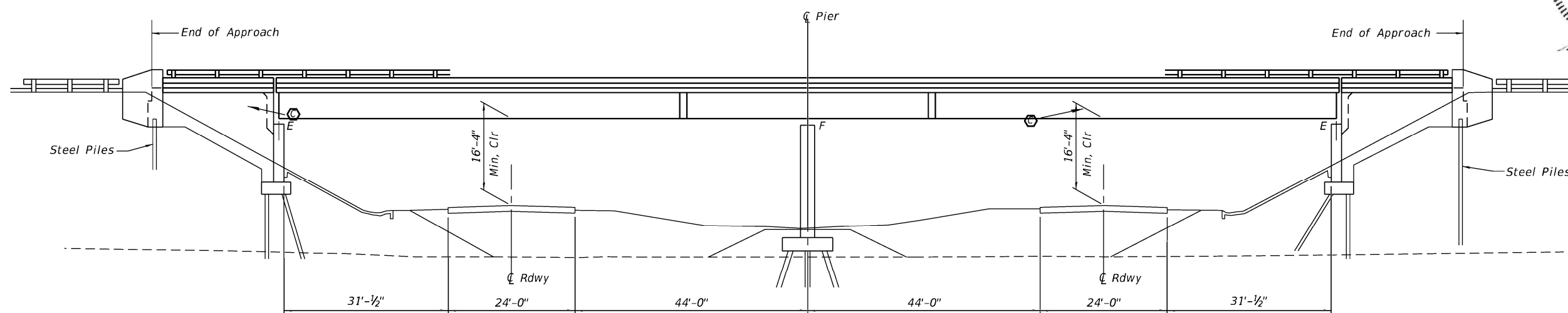
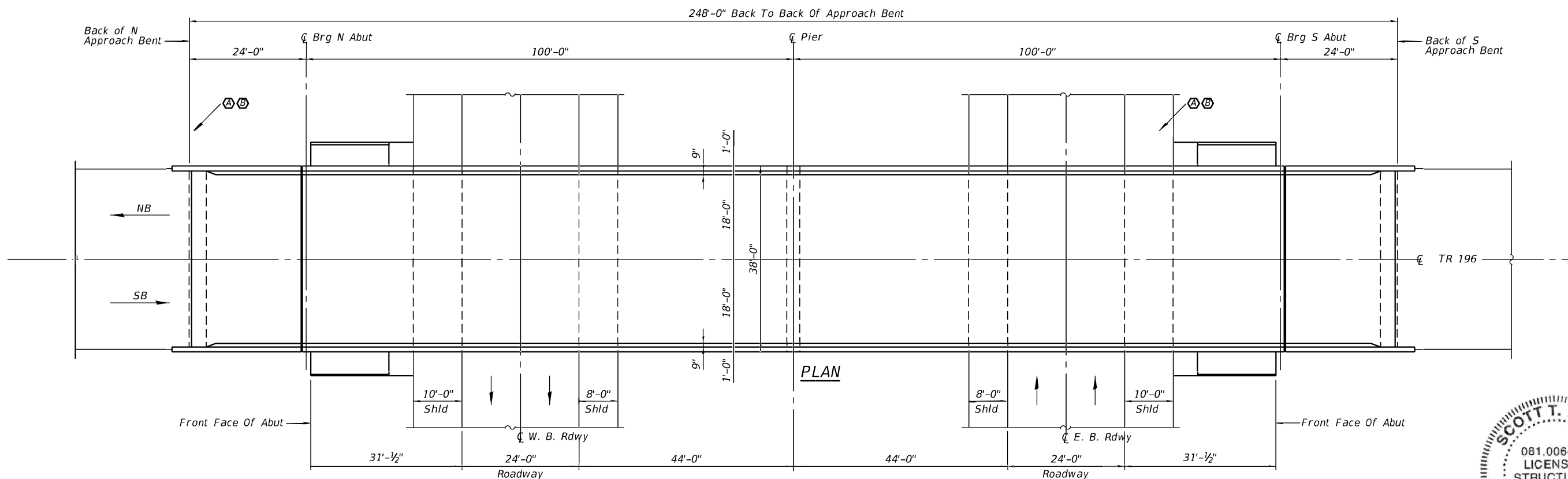
ITEM	UNIT	TOTAL
Silicone Joint Sealer, 1"	Foot	72
Polymer Concrete	Cu. Ft.	3
Structural Repair of Concrete <= 5"	Sq. Ft.	66
Hot-Mixed Asphalt Surface Removal, 1 1/2"	Sq. Yd.	2

**SCOPE OF WORK**

- A - Remove Existing Joint at Approaches
- B - Install Silicone Joint Seal at Approaches
- C - Abutment Repairs

**GENERAL NOTES**

Plan dimensions and details relative to the existing plans are subject to nominal construction variations. The Contractor shall field verify existing dimensions and details affecting new construction and make necessary approved adjustments prior to construction or ordering materials. Such variations shall not be cause for additional compensation for a change in scope of the work, however, the Contractor will be paid for the quantity actually furnished at the unit price bid for the work. Traffic will be detoured during construction.



5-3-23  
Exp 11-30-23

MODEL: Default  
FILE NAME: \\pff.com\dfs\brfge\2200780 (WO 13 SN 081-0121)\02\_Design (MS)\64503-04 - Plan & Elev.dgn

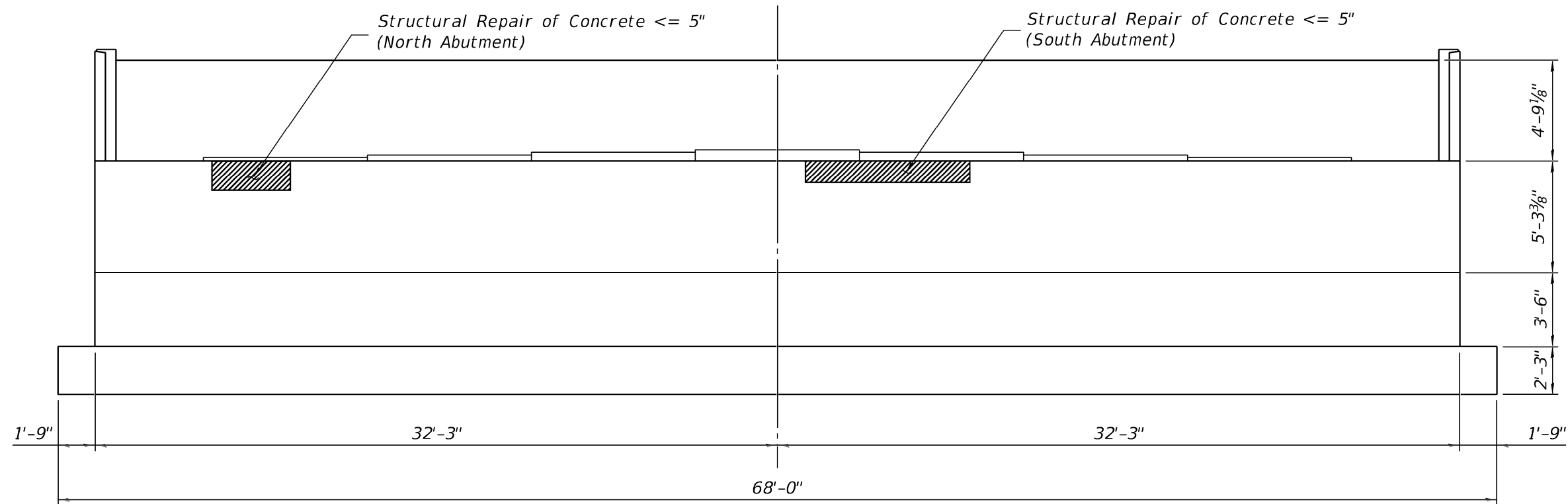


USER NAME *	DESIGNED -	REVISED -
PLOT SCALE *	CHECKED -	REVISED -
PLOT DATE *	DRAWN -	REVISED -
	CHECKED -	REVISED -

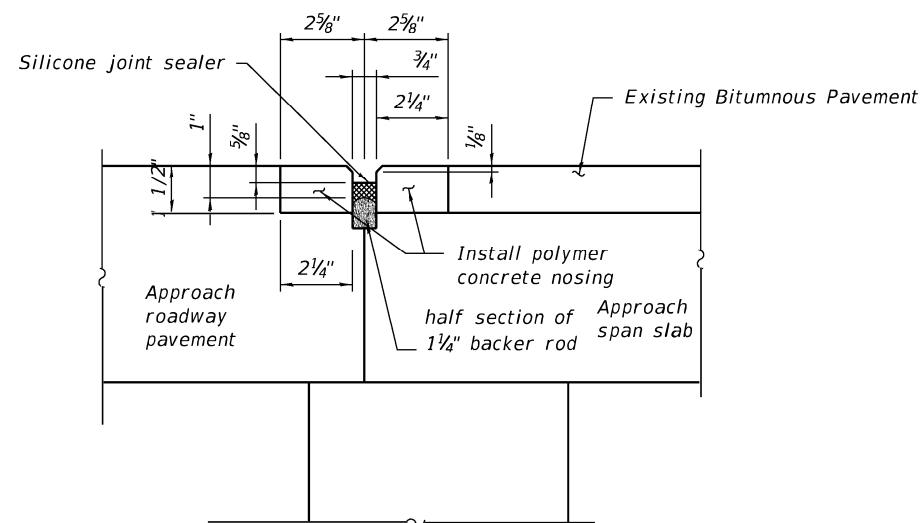
STATE OF ILLINOIS  
DEPARTMENT OF TRANSPORTATION

SN 081-0121 248th STREET CROSSING I-88 (FAI 88)  
PLAN AND ELEVATION

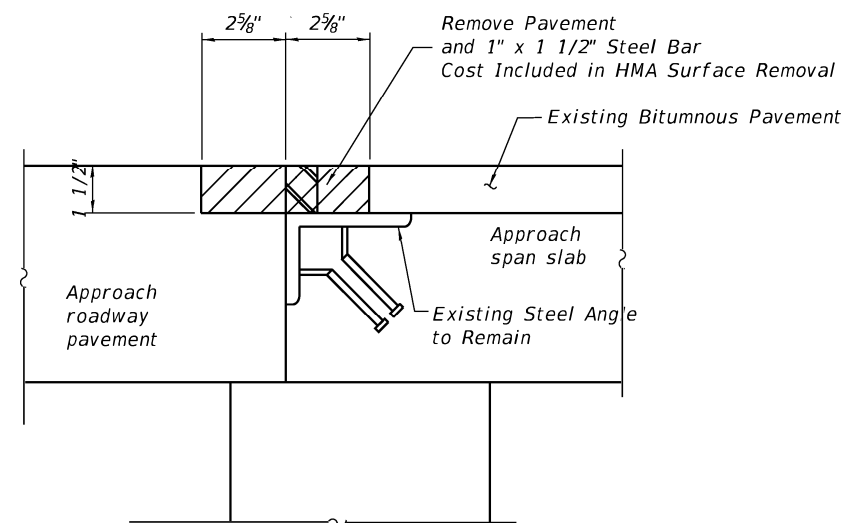
F.A.I. RTE.	SECTION	COUNTY	TOTAL SHEETS	SHEET NO.
88	(161-IHB-3)B JR	ROCK ISLAND	5	4
CONTRACT NO. 64503				
ILLINOIS FED. AID PROJECT				



ABUTMENT ELEVATION



PROPOSED JOINT AT APPROACHES



EXISTING JOINT AT APPROACHES

MODEL: Default  
 FILE NAME: \\kpf.com\dfs\Bridges\2200780 (WO 13 SN 081-0121)\02\_Design (MS)\64503-05- Abutment Repairs.dgn



1500 Sherman Ave, Suite 1020  
 Evanston, IL 60201  
 847-859-7790  
 www.kpff.com

USER NAME =	DESIGNED -	REVISED -
	CHECKED -	REVISED -
PLOT SCALE =	DRAWN -	REVISED -
PLOT DATE =	CHECKED -	REVISED -

STATE OF ILLINOIS  
 DEPARTMENT OF TRANSPORTATION

SN 081-0121 248th STREET CROSSING I-88 (FAI 88)  
 ABUTMENT AND JOINT REPAIRS

F.A.I. RTE.	SECTION	COUNTY	TOTAL SHEETS	SHEET NO.
88	(161-IHB-3)BJR	ROCK ISLAND	5	5
CONTRACT NO. 64503				
ILLINOIS FED. AID PROJECT				