

STATE OF ILLINOIS
DEPARTMENT OF TRANSPORTATION

F.A.P. RTE.	SECTION	COUNTY	TOTAL SHEETS	SHEET NO.
332	D5 MAST ARM REPL. 2023-1	EDGAR	6	1
		ILLINOIS	CONTRACT NO. 70G43	

FOR INDEX OF SHEETS, SEE SHEET NO. 2

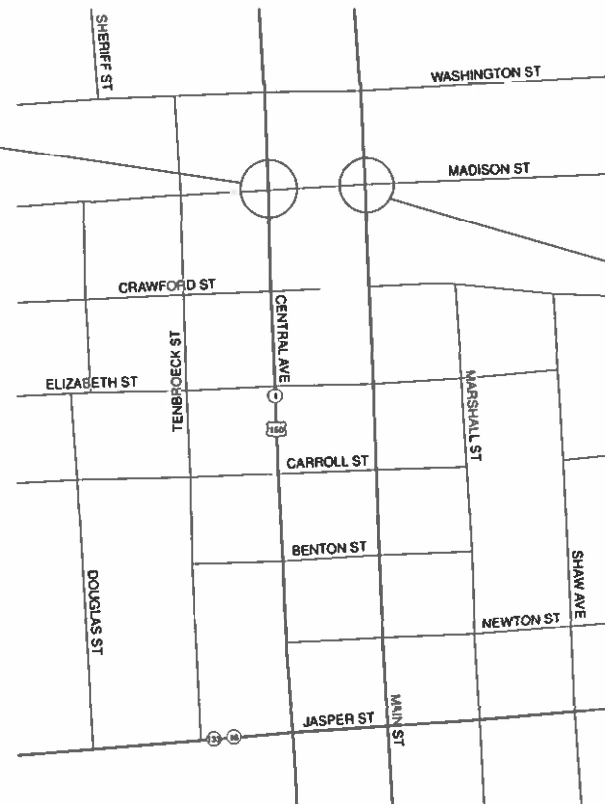
**PROPOSED
HIGHWAY PLANS**

FAP 332 (IL 1/ US 150)
SECTION D5 MAST ARM REPLACE 2023-1
PROJECT STP-EYLB(028)
TRAFFIC SIGNAL REMOVAL
EDGAR COUNTY

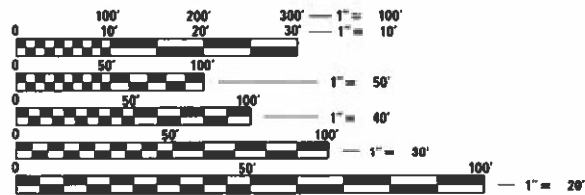
C-95-038-23



FAP 332; IL 1 (CENTRAL ST)
& MADISON ST



FAP 332; IL 1 (MAIN ST)
& MADISON ST



FULL SIZE PLANS HAVE BEEN PREPARED USING STANDARD ENGINEERING SCALES. REDUCED SIZED PLANS WILL NOT CONFORM TO STANDARD SCALES. IN MAKING MEASUREMENTS ON REDUCED PLANS, THE ABOVE SCALES MAY BE USED.

J.U.L.I.E.
JOINT UTILITY LOCATION INFORMATION FOR EXCAVATORS
1-800-892-0123
OR 811

PROJECT ENGINEER: JEFFERY ALLEN
PROJECT MANAGER: ROGER BIGGS
217-466-4181
CONTRACT NO. 70G43

CITY OF PARIS

STATE OF ILLINOIS
DEPARTMENT OF TRANSPORTATION

SUBMITTED 3/15 2023
Kensil A. Harnettson
REGIONAL ENGINEER

May 12, 2023 *[Signature]*
ENGINEER OF DESIGN AND ENVIRONMENT

May 12, 2023 *[Signature]*
DIRECTOR OF HIGHWAYS PROJECT IMPLEMENTATION

**PRINTED BY THE AUTHORITY
OF THE STATE OF ILLINOIS**

INDEX OF SHEETS

- 1 COVER SHEET
- 2 GENERAL NOTES, TRAFFIC SIGNAL GENERAL NOTES, STANDARDS TO BE INCLUDED IN PLANS
- 3 SUMMARY OF QUANTITIES
- 4 TRAFFIC SIGNAL REMOVAL LAYOUT - IL. 1 SB (CENTRAL ST) & MADISON ST
- 5 TRAFFIC SIGNAL REMOVAL LAYOUT - IL. 1 NB (MAIN ST) & MADISON ST
- 6 SCHEDULES

STANDARDS TO BE INCLUDED IN THE PLANS

- 000001-08 STANDARD SYMBOLS, ABBREVIATIONS AND PATTERNS
- 701006-05 OFF-ROAD OPERATIONS, MULTILANE, 15' (4.5 m) TO 24" (600 MM) FROM PAVMENT EDGE
- 701601-09 URBAN LANE CLOSURE, MULTILANE, 1 W OR 2 W WITH NONTRAVERSIBLE MEDIAN
- 701701-10 URBAN LANE CLOSURE, MULTILANE INTERSECTION
- 701801-06 SIDEWALK CORNER OR CROSSWALK CLOSURE
- 701901-08 TRAFFIC CONTROL DEVICES

MODEL: \\MODEL\MAME
 FILE: \\MAILS_PUB\Public\paw_bentley.com\PW\DOT\Documents\DOT_Offices\Dir\dr: S:\Project\0570G43\CAD\DATA\Design\0570G43 - sheet file traffic_signal.dgn

USER NAME = roger.biggs	DESIGNED -	REVISED -	STATE OF ILLINOIS DEPARTMENT OF TRANSPORTATION	INDEX OF SHEETS STANDARDS TO BE INCLUDED IN THE PLANS		F.A.P. RTE.	SECTION	COUNTY	TOTAL SHEETS	SHEET NO.
	DRAWN -	REVISED -		332	D5 MAST ARM REPL. 2023-1	EDGAR	6	2		
PLOT SCALE = 20,0000 * / in.	CHECKED -	REVISED -		CONTRACT NO. 70G43						
PLOT DATE = 2/27/2023	DATE -	REVISED -		ILLINOIS FED. AID PROJECT						
			SCALE:	SHEET	OF	SHEETS	STA.	TO	STA.	

SUMMARY OF QUANTITIES

SHEET 1 OF 1

LOCATION OF WORK: COUNTY: FUNDING BREAKOUT: CONSTRUCTION TYPE CODE:	FAP 332 U.S. 150/IL.1 CENTRAL ST. & MADISON ST. PARIS EDGAR 80% FED 20% STATE 0021 URBAN	FAP 332 U.S. 150/IL.1 MAIN ST. & MADISON ST. PARIS EDGAR 80% FED 20% STATE 0021 URBAN
--	--	---

		<u>ITEM</u>	<u>UNIT</u>	<u>TOTAL QUANTITY</u>	<u>QUANTITY</u>	<u>QUANTITY</u>
	67100100	MOBILIZATION	L SUM	1.0	0.5	0.5
	70102630	TRAFFIC CONTROL AND PROTECTION, STANDARD 701601	L SUM	1.0	0.5	0.5
	70102635	TRAFFIC CONTROL AND PROTECTION, STANDARD 701701	L SUM	1.0	0.5	0.5
	70102640	TRAFFIC CONTROL AND PROTECTION, STANDARD 701801	L SUM	1.0	0.5	0.5
	84500120	REMOVAL OF ELECTRIC SERVICE INSTALLATION	EACH	1.0	0.5	0.5
	89502300	REMOVE ELECTRIC CABLE FROM CONDUIT	FOOT	309.0	183.0	126.0
	89502375	REMOVE EXISTING TRAFFIC SIGNAL EQUIPMENT	EACH	2.0	1.0	1.0
	89502380	REMOVE EXISTING HANDHOLE	EACH	5.0	3.0	2.0
	89502385	REMOVE EXISTING CONCRETE FOUNDATION	EACH	13.0	7.0	6.0

MODEL: \\MODEL\MAME
 FILE: \\MAIL: p:\pub\cpx\beefey.com\PIV\DOT\Documents\DOT\Office\Dir\dir: S:\Project\0570G43\CAD\DATA\Design\0570G43 - sheet file traffic signal.dgn

USER NAME = roger.biggs	DESIGNED -	REVISED -	
	DRAWN -	REVISED -	
PLOT SCALE = 20,0000 * / in.	CHECKED -	REVISED -	
PLOT DATE = 2/1/2023	DATE -	REVISED -	

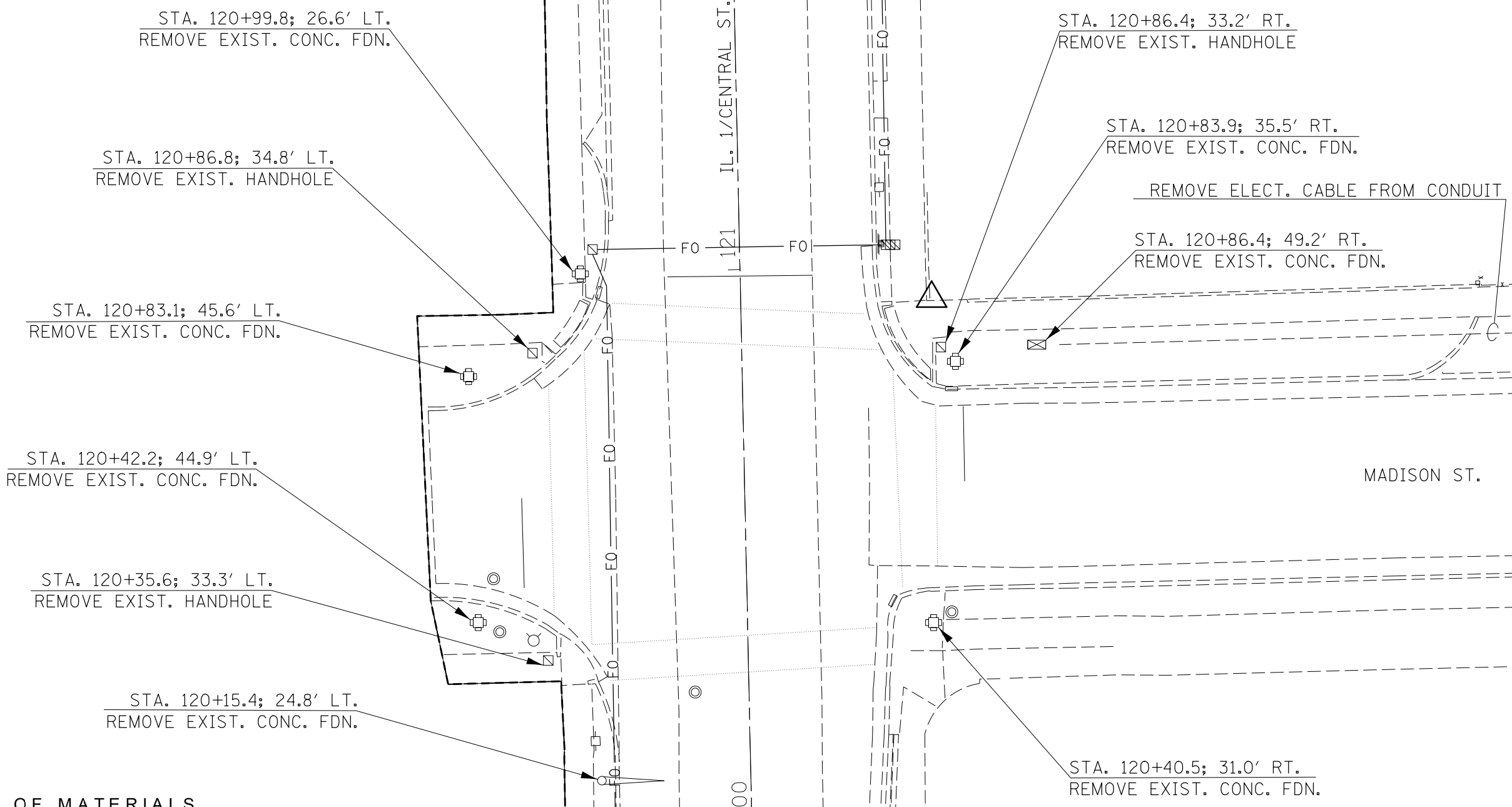
**STATE OF ILLINOIS
DEPARTMENT OF TRANSPORTATION**

SUMMARY OF QUANTITIES

SCALE: SHEET OF SHEETS STA. TO STA.

F.A.P. RTE.	SECTION	COUNTY	TOTAL SHEETS	SHEET NO.
332	D5 MAST ARM REPL. 2023-1	EDGAR	6	3
CONTRACT NO. 70G43				
ILLINOIS FED. AID PROJECT				

MODEL: \\MODELNAME
 FILE: \\NAME.dwg
 PROJECT: \\PROJECTNAME
 SHEET: \\SHEETNAME



BILL OF MATERIALS

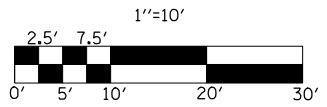
IL. 1 (CENTRAL ST) & MADISON ST

ITEM	UNIT	QUANTITY
REMOVE ELECTRIC CABLE FROM CONDUIT	FOOT	183
REMOVE EXISTING TRAFFIC SIGNAL EQUIPMENT	EACH	1
REMOVE EXISTING HANDHOLE	EACH	3
REMOVE EXISTING CONCRETE FOUNDATION	EACH	7

TRAFFIC SIGNAL REMOVAL

F.A.P. 332 (IL. 1/Central St.)

&
Madison St.



**STATE OF ILLINOIS
DEPARTMENT OF TRANSPORTATION**

**FAP 332 /IL. 1 /CENTRAL ST. & MADISON ST.
REMOVAL ITEMS**

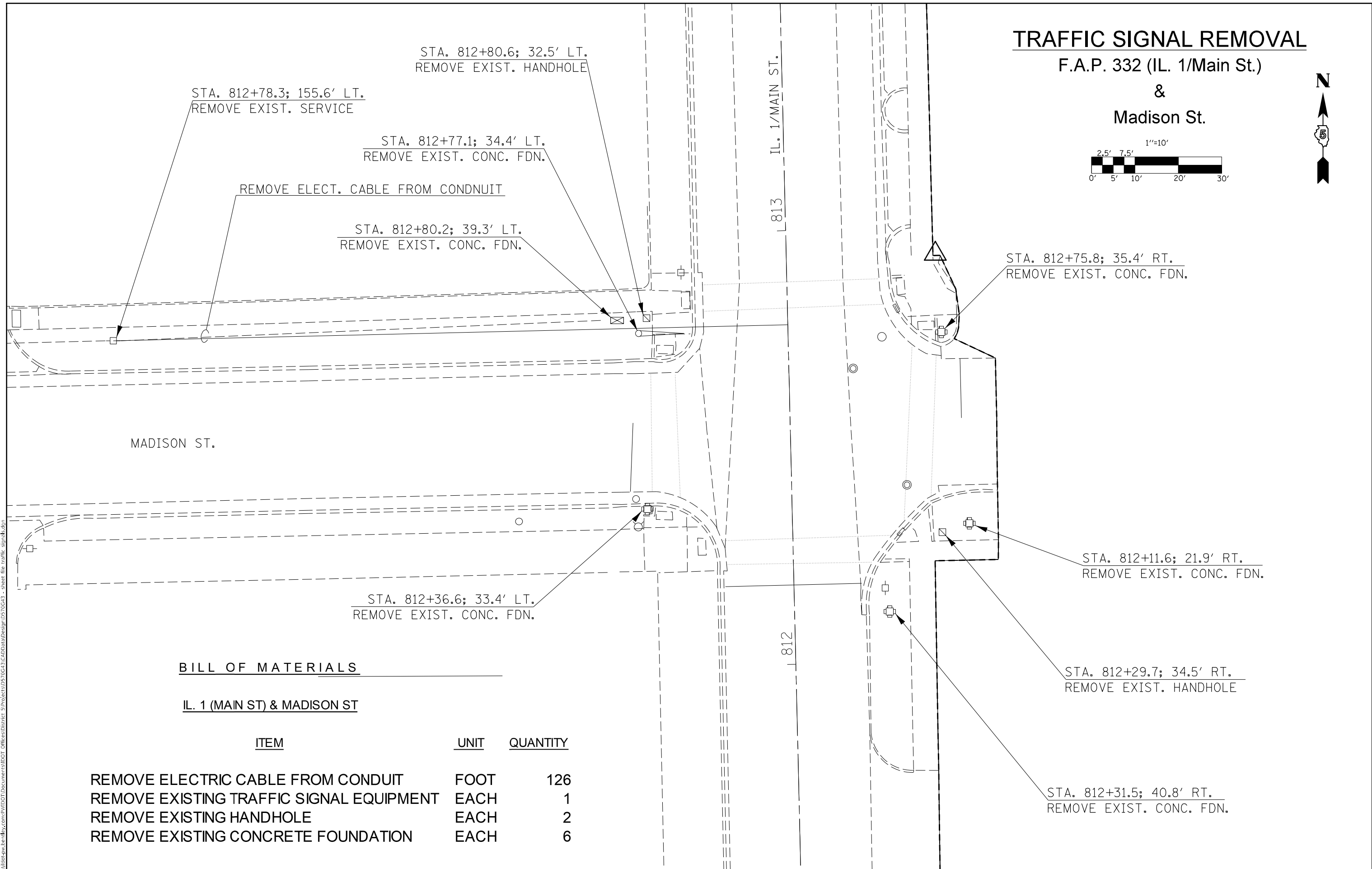
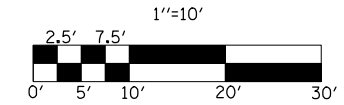
USER NAME = roger.biggs	DESIGNED -	REVISED -
PLOT SCALE = 20,0000 * / in.	DRAWN -	REVISED -
PLOT DATE = 2/27/2023	CHECKED -	REVISED -
	DATE -	REVISED -

SCALE:	SHEET	OF	SHEETS	STA.	TO	STA.	F.A.P. RTE. 332	SECTION D5 MAST ARM REPL. 2023-1	COUNTY EDGAR	TOTAL SHEETS 6	SHEET NO. 4
										CONTRACT NO. 70G43	
										ILLINOIS FED. AID PROJECT	

TRAFFIC SIGNAL REMOVAL

F.A.P. 332 (IL. 1/Main St.)

&
Madison St.



BILL OF MATERIALS

IL. 1 (MAIN ST) & MADISON ST

ITEM	UNIT	QUANTITY
REMOVE ELECTRIC CABLE FROM CONDUIT	FOOT	126
REMOVE EXISTING TRAFFIC SIGNAL EQUIPMENT	EACH	1
REMOVE EXISTING HANDHOLE	EACH	2
REMOVE EXISTING CONCRETE FOUNDATION	EACH	6

MODEL: \\MODEL\MAME
 FILE: \\MAILS_P\pub\cpx\beadefy.com\PIV\DOT\Documents\DOT Office\Dir\Dir: S\Project\0570G43\CAD\DATA\Design\0570G43 - sheet file traffic signal.dwg

USER NAME = roger.biggs	DESIGNED -	REVISED -
PLOT SCALE = 20,0000 * / in.	DRAWN -	REVISED -
PLOT DATE = 2/27/2023	CHECKED -	REVISED -
	DATE -	REVISED -

STATE OF ILLINOIS
DEPARTMENT OF TRANSPORTATION

FAP 332 /IL. 1 /MAIN ST. & MADISON ST.
REMOVAL ITEMS

SCALE: SHEET OF SHEETS STA. TO STA.

F.A.P. RTE.	SECTION	COUNTY	TOTAL SHEETS	SHEET NO.
332	D5 MAST ARM REPL. 2023-1	EDGAR	6	5
ILLINOIS FED. AID PROJECT			CONTRACT NO. 70G43	

CENTRAL ST. REMOVAL SCHEDULES

REMOVE EXIST. CONCRETE FOUNDATION

STA. 120+83.9; 35.5' RT. 1 EACH
 STA. 120+86.4; 49.2' RT. 1 EACH
 STA. 120+40.5; 31.0' RT. 1 EACH
 STA. 120+15.4; 24.8' LT. 1 EACH
 STA. 120+42.2; 44.9' LT. 1 EACH
 STA. 120+83.1; 45.6' LT. 1 EACH
 STA. 120+99.8; 26.6' LT. 1 EACH

TOTAL = 7 EACH

REMOVE EXISTING HANDHOLE

STA. 120+86.4; 33.2' RT. 1 EACH
 STA. 120+35.6; 33.3' LT. 1 EACH
 STA. 120+86.8; 34.8' LT. 1 EACH

TOTAL = 3 EACH

REMOVE ELECTRIC CABLE FROM CONDUIT

STA. 812+78.3; 155.6 LT. - STA. 812+80.2; 39.3' LT. 183.0 FEET
 STA. 812+78.3; 155.6 LT. - STA. 120+86.4; 49.2' RT. 126.0 FEET

TOTAL = 309.0 FEET

MAIN ST. REMOVAL SCHEDULES

REMOVE EXIST. CONCRETE FOUNDATION

STA. 812+36.6; 33.4' LT. 1 EACH
 STA. 812+72.1; 34.4' LT. 1 EACH
 STA. 812+80.2; 39.3' LT. 1 EACH
 STA. 812+75.8; 35.4' RT. 1 EACH
 STA. 812+31.5; 40.8' RT. 1 EACH
 STA. 812+11.6; 21.9' RT. 1 EACH

TOTAL = 6 EACH

REMOVE EXISTING HANDHOLE

STA 812+80.6; 32.5' LT. 1 EACH
 STA 812+29.7; 34.5' RT. 1 EACH

TOTAL = 2 EACH

REMOVAL OF ELECTRIC SERVICE INST.

STA. 802.78.3; 155.6' LT. 1 EACH