

STATE OF ILLINOIS
DEPARTMENT OF TRANSPORTATION

F.A.P. RTE.	SECTION	COUNTY	TOTAL SHEETS	SHEET NO.
612	112DR	SCHUYLER	6	1
		ILLINOIS	CONTRACT NO. 72114	

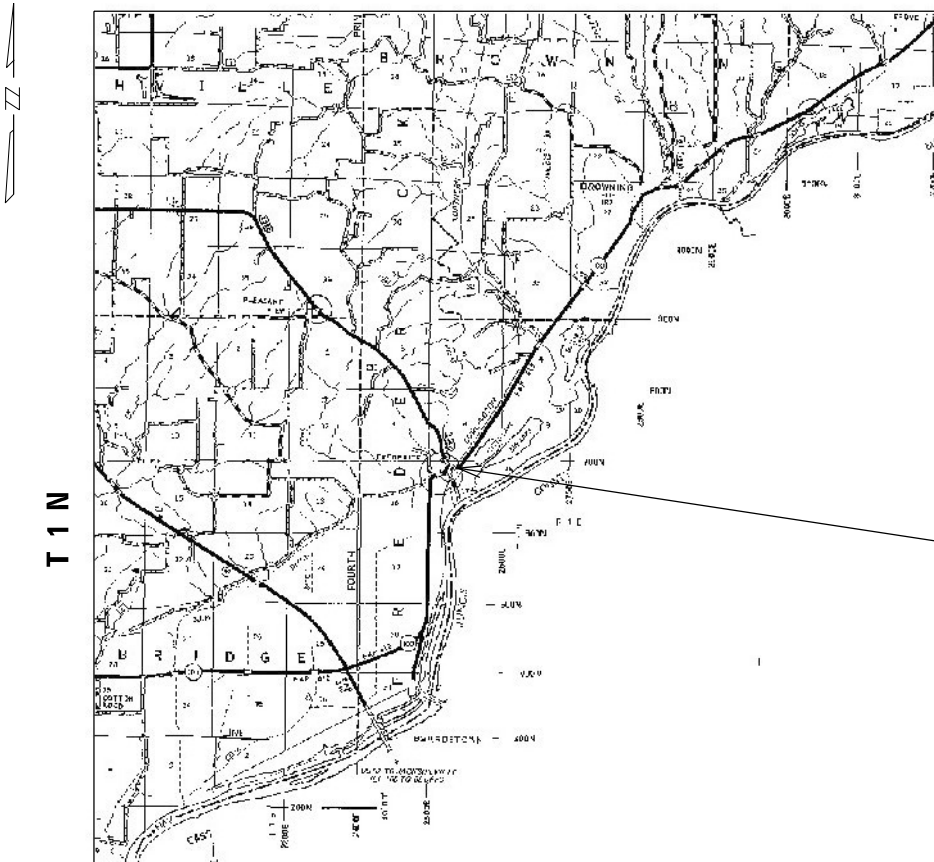
FOR INDEX OF SHEETS, SEE SHEET NO. 2

**PROPOSED
CONTRACT MAINTENANCE**

FAP ROUTE 612 (IL 100)
SECTION 112DR
PROJECT STATE
DRAINAGE
SCHUYLER COUNTY

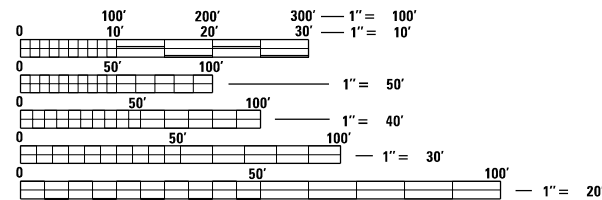
C-96-022-23

R 1 E



PROJECT LOCATION
STA. 13+75.00

ADT = 550 (2021)
SU = 40
MU = 70



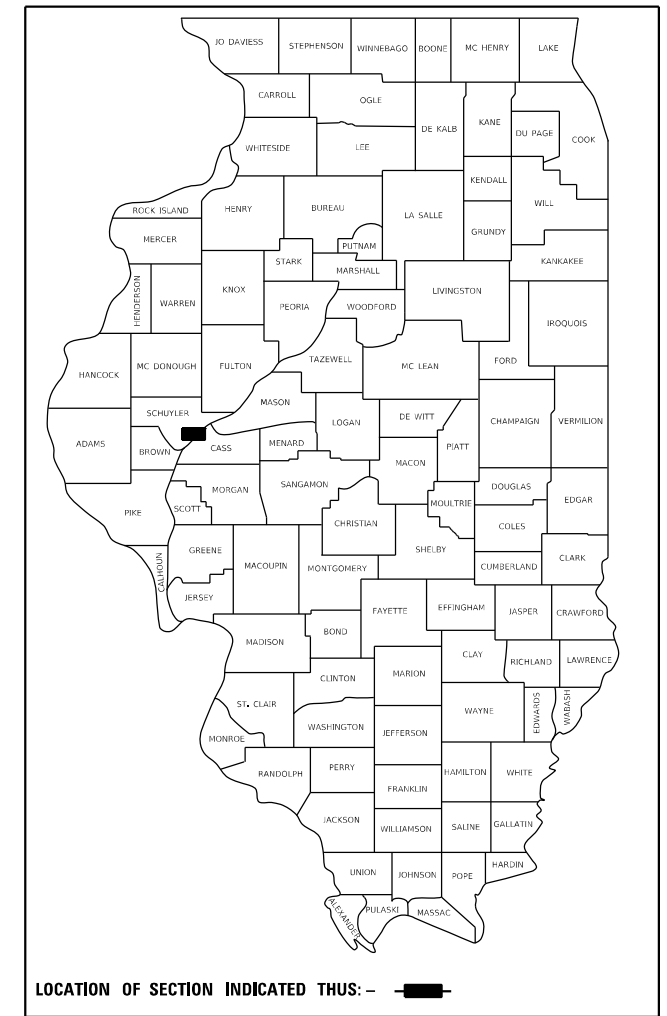
FULL SIZE PLANS HAVE BEEN PREPARED USING STANDARD ENGINEERING SCALES. REDUCED SIZED PLANS WILL NOT CONFORM TO STANDARD SCALES. IN MAKING MEASUREMENTS ON REDUCED PLANS, THE ABOVE SCALES MAY BE USED.

J.U.L.I.E.
JOINT UTILITY LOCATION INFORMATION FOR EXCAVATORS
1-800-892-0123
OR 811

PROJECT ENGINEER: MIKE HAMBY (217)524-7765
PROJECT MANAGER: TIM SHARP (217)524-9160

CONTRACT NO. 72114

D-96-079-22



LOCATION OF SECTION INDICATED THIS: - [black rectangle] -

STATE OF ILLINOIS
DEPARTMENT OF TRANSPORTATION

SUBMITTED March 27 2023

John P. Meyer
REGIONAL ENGINEER

May 12, 2023 *Scott A. Etk*
ENGINEER OF DESIGN AND ENVIRONMENT

May 12, 2023 *Stephen M. Smith*
DIRECTOR OF HIGHWAYS PROJECT IMPLEMENTATION

PRINTED BY THE AUTHORITY
OF THE STATE OF ILLINOIS

REV. - MS

STATE OF ILLINOIS DEPARTMENT OF TRANSPORTATION DIVISION OF HIGHWAYS DISTRICT 6
EXAMINED _____ March, 31 20 23 ENGINEER OF OPERATIONS
EXAMINED _____ March, 31 20 23 ENGINEER OF PROJECT IMPLEMENTATION
EXAMINED _____ March, 31 20 23 ENGINEER OF PROGRAM DEVELOPMENT

000001-08	STANDARD SYMBOLS, ABBREVIATIONS AND PATTERNS
001006	DECIMAL OF AN INCH AND OF A FOOT
701001-02	OFF-RD OPERATIONS, 2L, 2W, MULTILINE, MORE THAN 15' AWAY
701006-05	OFF-RD OPERATIONS, 2L, 2W, MULTILINE, 15' TO 24" FROM EDGE OF PAVEMENT
701901-08	TRAFFIC CONTROL DEVICES

INDEX	SHEET NO.	DESCRIPTION
1.		COVER SHEET
2.		INDEX, STANDARDS, SIGNATURES
3.		SUMMARY OF QUANTITIES
4.		LOCATION MAP
5.		PLAN
6.		TYPICAL SECTION

FILE NAME =		USER NAME = Timothy Sharp		DESIGNED -	REVISOR -
S:\CONTRM\MAIN\CAD\72114 - FAP 612 ILL 100		DRAWING - 4-Location.dgn		REVISOR -	REVISOR -
PLOT SCALE = 100,0000' / in.		CHECKED -		REVISOR -	REVISOR -
DATE = 3/24/2023		REVISOR -		REVISOR -	REVISOR -

SCALE: SHEET		SHEETS		TO STA.	
LOCATION MAP		612		SECTION	
CONTRACT NO. 72114		SCHUYLER		COUNTY	
TOTAL SHEETS		6		TOTAL SHEETS	

**STATE OF ILLINOIS
DEPARTMENT OF TRANSPORTATION**



**LOCATION OF PROJECT
STA. 13+75.00**

USER NAME = Timothy,Sharp	DESIGNED -	REVIS
DATE -	CHECKED -	REVIS
PLOT SCALE = 20.0000 / 1 in.	REVIS	REVIS
3/24/2023	REVIS	REVIS

STATE OF ILLINOIS
DEPARTMENT OF TRANSPORTATION

SCALE:	SHEET	OF	SHEETS	STA.	TO STA.
TYPICAL SECTION					

F.A.P. RT. NO.	SECTION	COUNTY	TOTAL SHEET
612	112DR	SCHUYLER	6
CONTRACT NO. 72114			6

