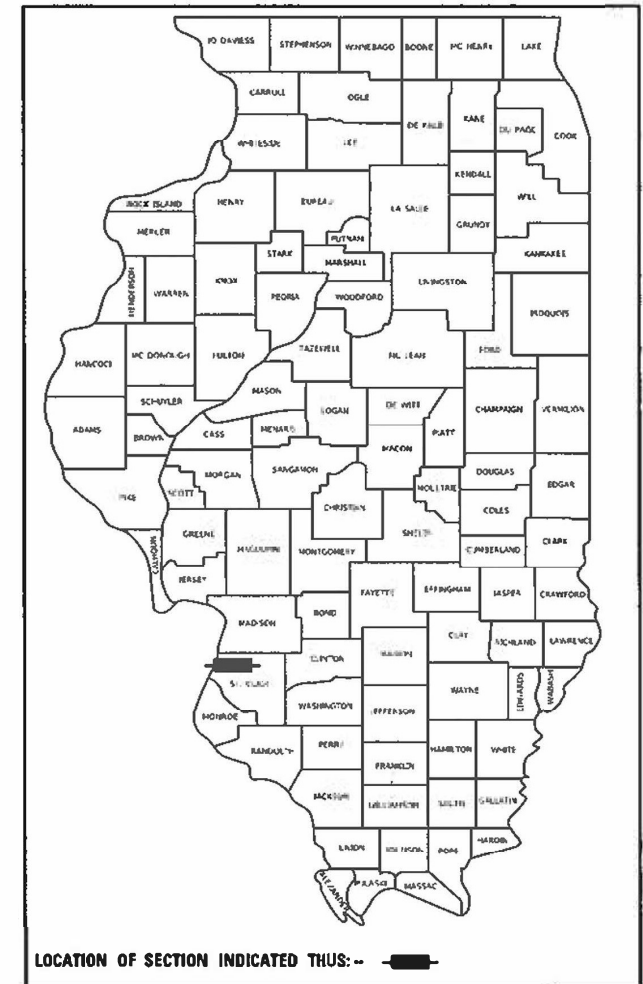


06-16-2023 LETTING ITEM 077

STATE OF ILLINOIS
DEPARTMENT OF TRANSPORTATION

FAI RTE.	SECTION	COUNTY	TOTAL SHEETS	SHEET NO.
255	82-4L-1	ST. CLAIR	17	1
		ILLINOIS	CONTRACT NO. 76R01	

D-98-044-22

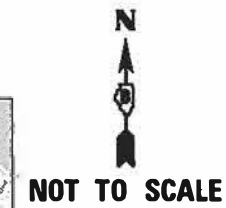
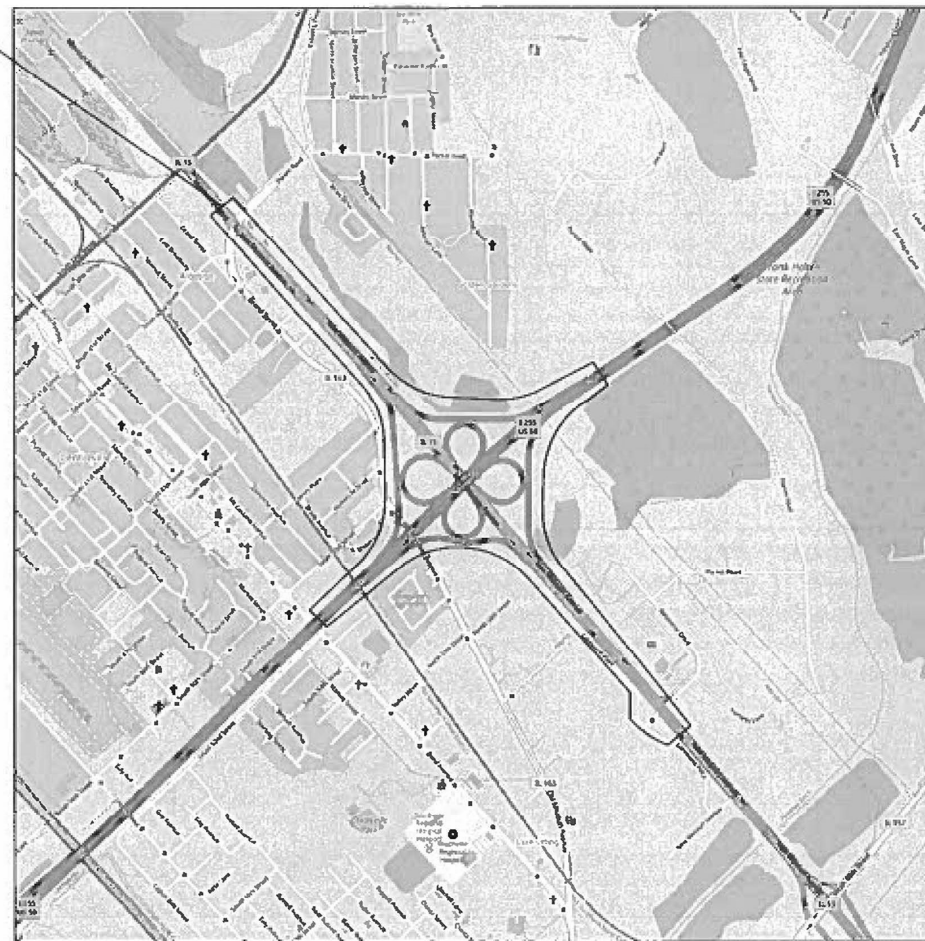


PROPOSED HIGHWAY PLANS

FAI ROUTE 255 (I-255)
SECTION 82-4L-1
PROJECT NHPP-JDP8(304)
LIGHTING IMPROVEMENT
ST. CLAIR COUNTY

C-98-074-22

I-255 & IL 15
CAHOKIA HEIGHTS, ILLINOIS



FOR INDEX OF SHEETS, SEE SHEET NO. 2
FOR LIST OF HIGHWAY STANDARDS, SEE SHEET NO. 2

GANDHI AND ASSOCIATES, INC.
NERANDRA C. THAKKAR, P.E.
IL. LIC. NO. 062-035883

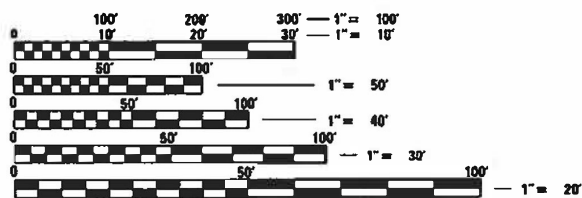
Narendra C. Thakkar

062-035883
REGISTERED
PROFESSIONAL
ENGINEER
OF
ILLINOIS

DATE: 01-10-2023

SIGNATURE AND SEAL APPLY TO SHEETS:
1-17

LICENSE EXPIRES: 11-30-2023



FULL SIZE PLANS HAVE BEEN PREPARED USING STANDARD
ENGINEERING SCALES. REDUCED SIZED PLANS WILL NOT
CONFORM TO STANDARD SCALES. IN MAKING MEASUREMENTS
ON REDUCED PLANS, THE ABOVE SCALES MAY BE USED.

J.U.L.I.E.
JOINT UTILITY LOCATION INFORMATION FOR EXCAVATORS
1-800-892-0123
OR 811

PROJECT ENGINEER: CHERYL KEPLAR
PROJECT MANAGER: RICHARD BARBEE

CONTRACT NO. 76R01

GROSS LENGTH = 13,500 FT. = 2.557 MILE
NET LENGTH = 13,500 FT. = 2.557 MILE

STATE OF ILLINOIS
DEPARTMENT OF TRANSPORTATION

SUBMITTED *March 8 20 23*
Mark Brown
REGIONAL ENGINEER

May 12, 2023 *S. E. A. etc*
ENGINEER OF DESIGN AND ENVIRONMENT

May 12, 2023 *Stephen M. ...*
DIRECTOR OF HIGHWAYS PROJECT IMPLEMENTATION

PRINTED BY THE AUTHORITY
OF THE STATE OF ILLINOIS

INDEX OF SHEETS

- 1 COVER SHEET
- 2 LEGEND, CABLE AND CONDUIT LEGEND, GENERAL NOTES, INDEX OF SHEETS, AND STANDARDS
- 3-4 SUMMARY OF QUANTITIES
- 5-6 SCHEDULE OF QUANTITIES
- 7-15 LIGHTING RETROFIT PLAN
- 16 SINGLE LINE WIRING DIAGRAM
- 17 LUMINAIRE PERFORMANCE TABLES

STANDARDS

000001-08	STANDARD SYMBOLS, ABBREVIATIONS, AND PATTERNS
001006	DECIMAL OF AN INCH AND OF A FOOT
701101-05	OFF-ROAD OPERATIONS, MULTILANE, 15' TO 24" FROM PAVEMENT EDGE
701106-02	OFF-ROAD OPERATIONS, MULTILANE, MORE THAN 15' AWAY
701400-11	APPROACH TO LANE CLOSURE, FREEWAY/EXPRESSWAY
701401-13	LANE CLOSURE, FREEWAY/EXPRESSWAY
701406-13	LANE CLOSURE, FREEWAY/EXPRESSWAY, DAY OPERATIONS ONLY
701411-09	LANE CLOSURE, MULTILANE, AT ENTRANCE OR EXIT RAMP, FOR SPEEDS ≥ 45 MPH
701422-10	LANE CLOSURE, MULTILANE, FOR SPEEDS ≥ 45 MPH TO 55 MPH
701428-01	TRAFFIC CONTROL, SETUP AND REMOVAL, FREEWAY/EXPRESSWAY
701456-05	PARTIAL EXIT RAMP CLOSURE, FREEWAY/EXPRESSWAY
701901-08	TRAFFIC CONTROL DEVICES
821101-02	LUMINAIRE WIRING IN POLE
830001-03	LIGHT POLE ALUMINUM MAST ARM
836001-04	LIGHT POLE FOUNDATION
838001-01	BREAKAWAY DEVICES

DISTRICT GENERAL NOTES

1. ILLINOIS STATE LAW REQUIRES A 48-HOUR NOTICE BE GIVEN TO ALL UTILITIES WITHIN THE PROJECT AREA BEFORE DIGGING. FIELD MARKING OF FACILITIES MAY BE OBTAINED BY CONTACTING J.U.L.I.E. OR FOR NON-MEMBERS, THE UTILITY COMPANY DIRECTLY. AGENCIES KNOWN TO HAVE FACILITIES WITHIN THE PROJECT AREA ARE AS FOLLOWS:
 * AMERIN ILLINOIS (GAS)
 * AT&T ILLINOIS (PHONE/COMMUNICATIONS)
 * CHARTER/SPECTRUM COMMUNICATIONS (CABLE TV)
 * CITY OF CAHOKIA HEIGHTS (SANITARY SEWER AND WATER)
 * USIC LOCATING SERVICES
 MEMBERS OF J.U.L.I.E. CALL TOLL FREE (800) 892-0123 OR 811 AND ARE INDICATED BY *. NON-J.U.L.I.E. MEMBERS MUST BE NOTIFIED INDIVIDUALLY.
2. A FULL SURVEY WAS NOT PERFORMED FOR THIS PROJECT AND THE PLANS WERE CREATED USING MICROFILM, FIELD MEASUREMENTS, AND SUPPLEMENTAL SURVEY.
3. THE DEPARTMENT STRONGLY ENCOURAGES THE PRIME CONTRACTOR AND THEIR APPROVED SUBCONTRACTORS TO HIRE MINORITY, WOMEN, AND DISADVANTAGED INDIVIDUALS FROM ITS FEDERALLY FUNDED HIGHWAY CONSTRUCTION CAREERS TRAINING PROGRAM (HCCTP) TO HELP MEET WORKFORCE AND TRAINEE GOALS. THIS PROGRAM IS TRAINING MINORITIES, WOMEN, AND DISADVANTAGE INDIVIDUALS IN HIGHWAY CONSTRUCTION-RELATED SKILLS, E.G. MATH FOR THE TRADES, JOB READINESS, TECHNICAL SKILLS COURSE WORK (CARPENTRY, CONCRETE FLATWORK, BLUEPRINT READING, SITE PLANS, SITE WORK, TOOLS USE, ETC.) AND OSHA 10 HOUR CERTIFICATION, TO PREPARE THEM FOR A CAREER IN THE HIGHWAY CONSTRUCTION TRADES. GRADUATES ARE WELL TRAINED AND READY TO BECOME PRODUCTIVE ENTRY-LEVEL CONSTRUCTION WORKERS. CONTACT THE DISTRICT 8 EEO OFFICE AT 618-346-3360 AND/OR THE HCCTP COORDINATOR AT 618-874-6528 TO LEARN ABOUT THE PROGRAM FOR ASSISTANCE IN MEETING WORKFORCE AND TRAINEE GOALS.
4. ALL TURF AREAS DISTURBED BY THE CONTRACTOR SHALL BE SEEDED WITH THE APPROPRIATE EROSION CONTROL, AS DIRECTED BY THE ENGINEER, AND SHALL BE INCLUDED IN THE COST OF THE CONTRACT PAY ITEMS.
5. THE CONTRACTOR SHALL BE RESPONSIBLE FOR PROTECTION OF ALL UNDERGROUND OR SURFACE UTILITIES, EVEN THOUGH THEY MAY NOT BE SHOWN ON THE PLANS. ANY UTILITY THAT IS DAMAGED DURING CONSTRUCTION SHALL BE REPAIRED OR REPLACED TO THE SATISFACTION OF THE ENGINEER. THIS WORK SHALL BE AT THE CONTRACTOR'S EXPENSE.

LIGHTING GENERAL NOTES

1. ALL LUMINAIRES SHALL BE 480 VOLTS.
 2. EXISTING WIRING IN CONDUIT ATTACHED TO STRUCTURES AND IN CONDUIT UNDER PAVEMENT SHALL BE REMOVED AND REPLACED. EXISTING WIRING UNDER PAVEMENT SHALL BE CUT AT BOTH ENDS OF UNDERGROUND SLEEVES TO FACILITATE REMOVAL.
 3. EXISTING DIRECT-BURIED WIRE SHALL BE ABANDONED IN PLACE.
 4. CONDUCTOR SPLICES SHALL BE IN POLE BASES OR JUNCTION BOXES. SPLICES BELOW GRADE WILL NOT BE PERMITTED.
- LIGHTING SYSTEM INSTALLATION SHALL CONFORM TO THE LATEST IDOT STANDARDS, NEC, AND LOCAL CODES.
- ALL ELECTRICAL EQUIPMENT AND PRODUCTS SHALL BE UL LISTED AND LABELED.
7. THE CONTRACTOR SHALL TAKE CARE WHEN INSTALLING ELECTRIC CABLE TO AVOID CONFLICT WITH EXISTING UNDERGROUND UTILITIES, TREES, AND ROOTS. THE CONTRACTOR SHALL BE RESPONSIBLE FOR ANY DAMAGE AS DETERMINED BY THE ENGINEER.
 8. A NOMINAL QUANTITY OF UNDERGROUND CONDUIT HAS BEEN PROVIDED TO BE USED IN THE EVENT THAT EXISTING SLEEVES UNDER PAVEMENT ARE NO LONGER USABLE.

LEGEND

- EXISTING TWIN ARM MEDIAN MOUNTED LIGHT POLE, 50' M.H., WITH EXISTING LED LUMINAIRE (OUTPUT DESIGNATION H) TO REMAIN
- EXISTING SINGLE ARM GROUND MOUNTED LIGHT POLE AND FOUNDATION TO BE REMOVED
- EXISTING SINGLE ARM GROUND MOUNTED LIGHT POLE, 50' M.H., WITH HPS LUMINAIRE TO BE REPLACED WITH LED (OUTPUT DESIGNATION H)
- PROPOSED ALUMINUM SINGLE ARM LIGHT POLE, 50' M.H., WITH PROPOSED LED LUMINAIRE (OUTPUT DESIGNATION H) ON PROPOSED FOUNDATION WITH BREAKAWAY DEVICE
- PROPOSED ALUMINUM LIGHT POLE, DUAL ARM WITH 90 DEGREE ROTATION, 50' M.H., WITH PROPOSED LED LUMINAIRES (OUTPUT DESIGNATION H), ON PROPOSED FOUNDATION WITH BREAKAWAY DEVICE
- EXISTING LIGHTING CONTROLLER TO REMAIN
- EXISTING POWER POLE TO REMAIN
- EXISTING JUNCTION BOX
- EXISTING BURIED CABLE TO BE ABANDONED
- EXISTING CABLE IN DUCT TO BE REMOVED (UNLESS NOTED OTHERWISE IN PLANS)
- EXISTING CONDUIT TO BE REUSED
- PROPOSED BURIED CABLE
- PROPOSED CABLE IN DUCT

CABLE AND CONDUIT LEGEND

- (A) ELECTRIC CABLE ASSEMBLY IN CONDUIT, 600V (XLP-TYPE TC) 2/C NO. 4 AND NO. 6 (87000775)
- (B) ELECTRIC CABLE ASSEMBLY IN CONDUIT, 600V (XLP-TYPE TC) 2/C NO. 6 AND NO. 8 (87000885)
- (C) ELECTRIC CABLE ASSEMBLY IN TRENCH, 600V (XLP-TYPE TC) 2/C NO. 4 AND NO. 6 (87005275)
- (D) ELECTRIC CABLE ASSEMBLY IN TRENCH, 600V (XLP-TYPE TC) 2/C NO. 6 AND NO. 8 (87005385)
- (E) REMOVE ELECTRIC CABLE FROM CONDUIT (89502300)
- (F) EXISTING ELECTRIC CABLE TO REMAIN

REV. - MS

MODEL: Defaul... FILE: NAME: R:\PROJECTS\Projects_2022\22-4115-500_200-37_W03_1-255.at.11.15\CADD_Sheets\087680-1-1-1-legend.dgn

<p>GANDHI AND ASSOCIATES, INC. ENGINEERS AND PLANNERS SOUTH NORTHWEST HIGHWAY SUITE 205 CHICAGO, ILLINOIS 60659 TEL: (773) 774-5900</p>	USER NAME = brice	DESIGNED - BR	REVISED -	STATE OF ILLINOIS DEPARTMENT OF TRANSPORTATION	LEGEND, CABLE AND CONDUIT LEGEND, GENERAL NOTES, INDEX OF SHEETS AND STANDARDS	F.A.I. RTE.	SECTION	COUNTY	TOTAL SHEETS	SHEET NO.
	PLOT SCALE = 0:2.0000" = 1" / in.	CHECKED - NT	REVISED -			255	82-4L-1	ST. CLAIR	17	2
	PLOT DATE = 3/6/2023	DATE - 2023-03-03	REVISED -					ILLINOIS	CONTRACT NO. 76R01	
						SCALE: N.T.S.				

CODE NO.	ITEM	UNIT	TOTAL QUANTITY	90% FED 10% STATE	CONSTRUCTION CODE
					HIGHWAY LIGHTING 0021 URBAN
* 66900200	NON-SPECIAL WASTE DISPOSAL	CU YD	525		525
* 66900530	SOIL DISPOSAL ANALYSIS	EACH	11		11
* 66901001	REGULATED SUBSTANCES PRE-CONSTRUCTION PLAN	L SUM	1		1
* 66901003	REGULATED SUBSTANCES FINAL CONSTRUCTION REPORT	L SUM	1		1
* 66901006	REGULATED SUBSTANCES MONITORING	CAL DA	20		20
67100100	MOBILIZATION	L SUM	1		1
70100320	TRAFFIC CONTROL AND PROTECTION, STANDARD 701422	L SUM	1		1
70100420	TRAFFIC CONTROL AND PROTECTION, STANDARD 701411	EACH	16		16
70100700	TRAFFIC CONTROL AND PROTECTION, STANDARD 701406	L SUM	1		1
70100800	TRAFFIC CONTROL AND PROTECTION, STANDARD 701401	L SUM	1		1
70100825	TRAFFIC CONTROL AND PROTECTION, STANDARD 701456	L SUM	1		1
81028240	UNDERGROUND CONDUIT, GALVANIZED STEEL, 4" DIA.	FOOT	100		100
82110008	LUMINAIRE, LED, ROADWAY, OUTPUT DESIGNATION H	EACH	110		110
83010130	LIGHT POLE, ALUMINUM, 50 FT. M.H., 2-15 FT. MAST ARMS	EACH	1		1

* SPECIALTY ITEM

MODEL: D:\p\it...
FILE: NAME: R:\PROJECTS\Projects_2022\22-IL-500_200-37_W03 1-255 at IL15\CAD_Sheets\0876R01-shit-sq1.dgn

 GANDHI AND ASSOCIATES, INC. ENGINEERS AND PLANNERS 505 N. NORTHWEST HIGHWAY SUITE 200 CHICAGO, ILLINOIS 60659 TEL: (773) 774-5900	USER NAME = brice	DESIGNED - BR	REVISED -	STATE OF ILLINOIS DEPARTMENT OF TRANSPORTATION	SUMMARY OF QUANTITIES (1 OF 2)	F.A.I. RTE.	SECTION	COUNTY	TOTAL SHEETS	SHEET NO.
	PLOT SCALE = 0:2.0000" = 1" / in.	DRAWN - BR	REVISED -			255	82-4L-1	ST. CLAIR	17	3
	PLOT DATE = 3/6/2023	CHECKED - NT	REVISED -			CONTRACT NO. 76R01				
	DATE - 2023-03-03	REVISED -	SCALE: N.T.S.			ILLINOIS				

CODE NO.	ITEM	UNIT	TOTAL QUANTITY	90% FED	CONSTRUCTION CODE
				10% STATE	HIGHWAY LIGHTING
					0021
					URBAN
83010600	LIGHT POLE, ALUMINUM, 50 FT. M.H., 15 FT. MAST ARM	EACH	6		6
83600300	LIGHT POLE FOUNDATION, 30" DIAMETER	FOOT	35		35
83800205	BREAKAWAY DEVICE, TRANSFORMER BASE, 15 INCH BOLT CIRCLE	EACH	7		7
84200600	REMOVAL OF LIGHTING UNIT, NO SALVAGE	EACH	7		7
84200804	REMOVAL OF POLE FOUNDATION	EACH	5		5
87000775	ELECTRIC CABLE ASSEMBLY IN CONDUIT, 600V (XLP-TYPE TC) 2/C NO. 4 AND NO. 6	FOOT	341		341
87000885	ELECTRIC CABLE ASSEMBLY IN CONDUIT, 600V (XLP-TYPE TC) 2/C NO. 6 AND NO. 8	FOOT	5071		5071
87005275	ELECTRIC CABLE ASSEMBLY IN TRENCH, 600V (XLP-TYPE TC) 2/C NO. 4 AND NO. 6	FOOT	4903		4903
87005385	ELECTRIC CABLE ASSEMBLY IN TRENCH, 600V (XLP-TYPE TC) 2/C NO. 6 AND NO. 8	FOOT	24231		24231
89502300	REMOVE ELECTRIC CABLE FROM CONDUIT	FOOT	16236		16236
X1400267	REMOVAL OF LIGHTING LUMINAIRE, NO SALVAGE	EACH	102		102

MODEL: D:\p\l\...
 FILE NAME: R:\PROJECTS\Projects_2022\22-IL-500-200-37_W03 1-255 at IL15\CAD_Sheets\0876R01-shit-02.dgn

 GANDHI AND ASSOCIATES, INC. ENGINEERS AND PLANNERS 5055 N. NORTHWEST HIGHWAY SUITE 205 CHICAGO, ILLINOIS 60630 TEL: (773) 774-5900	USER NAME = brice	DESIGNED - BR	REVISED -
	PLOT SCALE = 0:2.0000" = 1" / in.	DRAWN - BR	REVISIONS -
	PLOT DATE = 3/6/2023	CHECKED - NT	REVISED -
		DATE - 2023-03-03	REVISED -

STATE OF ILLINOIS
DEPARTMENT OF TRANSPORTATION

SUMMARY OF QUANTITIES (2 OF 2)	
SCALE: N.T.S.	

F.A.I. RTE.	SECTION	COUNTY	TOTAL SHEETS	SHEET NO.
255	82-4L-1	ST. CLAIR	17	4
			CONTRACT NO. 76R01	
ILLINOIS				

CONTROLLER #13

CRKT#	FROM/TO	ELECTRIC CABLE ASSEMBLY IN CONDUIT, 600V (XLP-TYPE TC) 2/C NO. 4 AND NO. 6	ELECTRIC CABLE ASSEMBLY IN CONDUIT, 600V (XLP-TYPE TC) 2/C NO. 6 AND NO. 8	ELECTRIC CABLE ASSEMBLY IN TRENCH, 600V (XLP-TYPE TC) 2/C NO. 4 AND NO. 6	ELECTRIC CABLE ASSEMBLY IN TRENCH, 600V (XLP-TYPE TC) 2/C NO. 6 AND NO. 8	REMOVE ELECTRIC CABLE FROM CONDUIT	COMMENT
13A	M81 A&B	M82 A&B					
13A	M82 A&B	M83 A&B					
13A	M83 A&B	M84 A&B					
13A	M84 A&B	M85 A&B					
13A	M85 A&B	M86 A&B					
13A	M86 A&B	M87 A&B					
13A	M87 A&B	M88 A&B					
13A	M88 A&B	M89 A&B					
13A	M89 A&B	CNTRL#13					
13B	M95 A&B	M94 A&B	320			960	
13B	M94 A&B	M93 A&B	320			960	
13B	M93 A&B	JB2	262			786	
13B	JB2	M92 A&B	59			177	2" DIA. ATS
13B	M92 A&B	JB1	90			270	2" DIA. ATS
13B	JB1	M91 A&B	231			693	
13B	M91 A&B	M90 A&B	219			657	
13B	M90 A&B	CNTRL#13	130			390	EX. UNDERGROUND CONDUIT
TOTAL		0	1631	0	85	4893	

CRKT#	POLE #	ROADWAY	STATION	LUMINAIRE, LED, ROADWAY OUTPUT DESIGNATION H	LIGHT POLE, ALUMINUM 50 FT. M.H. W/TB 2-15 FT. MAST ARM	LIGHT POLE, ALUMINUM 50 FT. M.H. W/TB 15 FT. MAST ARM
13A	M81 A&B	BARRIER	763+90	0		
13A	M82 A&B	BARRIER	767+20	0		
13A	M83 A&B	BARRIER	770+50	0		
13A	M84 A&B	BARRIER	773+80	0		
13A	M85 A&B	BARRIER	777+10	0		
13A	M86 A&B	BARRIER	780+40	0		
13A	M87 A&B	BARRIER	783+70	0		
13A	M88 A&B	BARRIER	787+00	0		
13A	M89 A&B	BARRIER	790+30	0		
13B	M90 A&B	BARRIER	793+60	0		
13B	M91 A&B	BARRIER	796+85	0		
13B	M92 A&B	BARRIER	800+05	0		
13B	M93 A&B	BARRIER	803+25	0		
13B	M94 A&B	BARRIER	806+45	0		
13B	M95 A&B	BARRIER	809+65	0		
TOTAL				0	0	0

CONTROLLER #14

CRKT#	FROM/TO	ELECTRIC CABLE ASSEMBLY IN CONDUIT, 600V (XLP-TYPE TC) 2/C NO. 4 AND NO. 6	ELECTRIC CABLE ASSEMBLY IN CONDUIT, 600V (XLP-TYPE TC) 2/C NO. 6 AND NO. 8	ELECTRIC CABLE ASSEMBLY IN TRENCH, 600V (XLP-TYPE TC) 2/C NO. 4 AND NO. 6	ELECTRIC CABLE ASSEMBLY IN TRENCH, 600V (XLP-TYPE TC) 2/C NO. 6 AND NO. 8	REMOVE ELECTRIC CABLE FROM CONDUIT	COMMENT
14A	X1	X2			191		
14A	X2	X4		84	192	252	EX. UNDERGROUND CONDUIT
14A	X4	X6			381		
14A	X6	X8			380		
14A	X8	X10			380		
14A	X10	CNTRL #14			305		
14A	X3	X5			369		
14A	X5	X7			386		
14A	X7	X9			380		
14A	X9	X11			380		
14A	X11	CNTRL #14	115		245	345	EX. UNDERGROUND CONDUIT
14B	A1	A2			304		
14B	A2	A3			310		
14B	A3	A4			298		
14B	A4	A5			310		
14B	A5	A6			320		
14B	A6	A7			307		
14B	B5	B4			179		
14B	B4	B3			184		
14B	B3	B2			184		
14B	B2	B1			180		
14B	X27	X25			264		
14B	X25	B1			142		
14B	B1	X23	35		234	105	EX. UNDERGROUND CONDUIT
14B	X23	A7	31		175	93	EX. UNDERGROUND CONDUIT
14B	A7	X21			199		
14B	X21	X19			311		
14B	X19	X17			340		
14B	X17	X15			343		
14B	X15	X13			384		
14B	X13	CNTRL #14	115		299	345	EX. UNDERGROUND CONDUIT
14C	G8	G7			270		
14C	G7	JB1			90		
14C	JB1	JB2	114			342	EX. BRIDGE CONDUIT
14C	JB2	G6			53		
14C	G6	G5			275		
14C	G5	G4			275		
14C	G4	G3			239		
14C	G3	G2			270		
14C	X26	H6	36		212	108	EX. UNDERGROUND CONDUIT
14C	H1	H2			194		
14C	H2	H3			207		
14C	H3	H4			211		
14C	H4	H5			211		
14C	H5	H6			205		
14C	H6	X24			104		
14C	X24	X22			342		
14C	X22	X20			341		
14C	X20	G2			229		
14C	G2	G1			243		
14C	G1	X18			240		
14C	X18	X16			300		
14C	X16	X14			378		
14C	X14	X12			380		
14C	X12	CNTRL #14			79		
TOTAL			115	415	2403	11801	1590

CRKT#	POLE #	ROADWAY	STATION	LUMINAIRE, LED, ROADWAY OUTPUT DESIGNATION H	LIGHT POLE, ALUMINUM 50 FT. M.H. W/TB 2-15 FT. MAST ARM	LIGHT POLE, ALUMINUM 50 FT. M.H. W/TB 15 FT. MAST ARM
14A	X1	IL 15 RT.	53+60	1		
14A	X2	IL 15 RT.	55+40	1		
14A	X3	IL 15 LT.	55+85	1		
14A	X4	IL 15 RT.	57+70	1		
14A	X5	IL 15 LT.	59+55	1		
14A	X6	IL 15 RT.	61+50	1		
14A	X7	IL 15 LT.	63+4	1		
14A	X8	IL 15 RT.	65+30	1		
14A	X9	IL 15 LT.	67+20	1		
14A	X10	IL 15 RT.	69+10	1		
14A	X11	IL 15 LT.	71+00	1		
14B	X13	IL 15 LT.	74+80	1		
14B	X15	IL 15 LT.	78+60	1		
14B	X17	IL 15 LT.	82+00	1		
14B	X19	IL 15 LT.	85+40	1		
14B	X21	IL 15 LT.	88+55	1		
14B	X23	IL 15 LT.	91+83	1		
14B	X25	IL 15 LT.	95+08	1		
14B	X27	IL 15 LT.	97+80	1		
14B	A1	RAMP A RT.	4+30	1		
14B	A2	RAMP A RT.	7+30	1		
14B	A3	RAMP A RT.	10+45	1		
14B	A4	RAMP A RT.	13+55	1		
14B	A5	RAMP A RT.	16+65	1		
14B	A6	RAMP A RT.	19+85	1		
14B	A7	RAMP A RT.	23+00	1		
14B	B1	RAMP B RT.	3+58	1		
14B	B2	RAMP B RT.	5+60	1		
14B	B3	RAMP B RT.	7+67	1		
14B	B4	RAMP B RT.	9+70	1		
14B	B5	RAMP B RT.	11+60	1		
14C	X12	IL 15 RT.	72+90	1		
14C	X14	IL 15 RT.	76+70	1		
14C	X16	IL 15 RT.	80+50	1		
14C	X18	IL 15 RT.	83+50	1		
14C	X20	IL 15 RT.	87+33	1		
14C	X22	IL 15 RT.	90+73	1		
14C	X24	IL 15 RT.	94+15	1		
14C	X26	IL 15 RT.	97+40	1		
14C	G1	RAMP G RT.	9+47	1		
14C	G2	RAMP G RT.	12+05	1		
14C	G3	RAMP G RT.	14+75	1		
14C	G4	RAMP G RT.	17+10	1		
14C	G5	RAMP G RT.	49+85	1		
14C	G6	RAMP G RT.	22+60	1		
14C	G7	RAMP G RT.	25+20	1		
14C	G8	RAMP G RT.	27+95	1		
14C	H1	RAMP H RT.	2+78	1		
14C	H2	RAMP H RT.	4+90	1		
14C	H3	RAMP H RT.	7+18	1		
14C	H4	RAMP H RT.	9+50	1		
14C	H5	RAMP H RT.	11+72	1		
14C	H6	RAMP H RT.	13+95	1		
TOTAL				53	0	0

MODEL: Default; FILE NAME: K:\PROJECTS\Projects_2022\22-IL-500_20037_W03_1225_at_IL15CAD_Sheets\B760-IntSchedule13-14.dgn

REV. - MS



USER NAME = brice	DESIGNED - BR	REVISED -
PLOT SCALE = 0.20000' / in.	DRAWN - BR	REVISED -
PLOT DATE = 3/6/2023	CHECKED - NT	REVISED -
	DATE - 2023-03-03	REVISED -

STATE OF ILLINOIS
DEPARTMENT OF TRANSPORTATION

SCHEDULE OF QUANTITIES

SCALE: N.T.S.

F.A.I. RTE.	SECTION	COUNTY	TOTAL SHEETS	SHEET NO.
255	82-4L-1	ST. CLAIR	17	5
			CONTRACT NO. 76R01	
ILLINOIS				

CONTROLLER #15

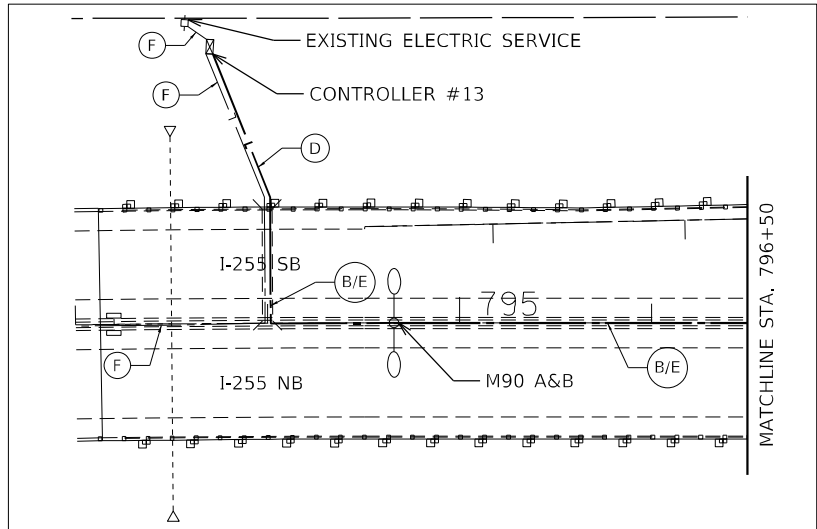
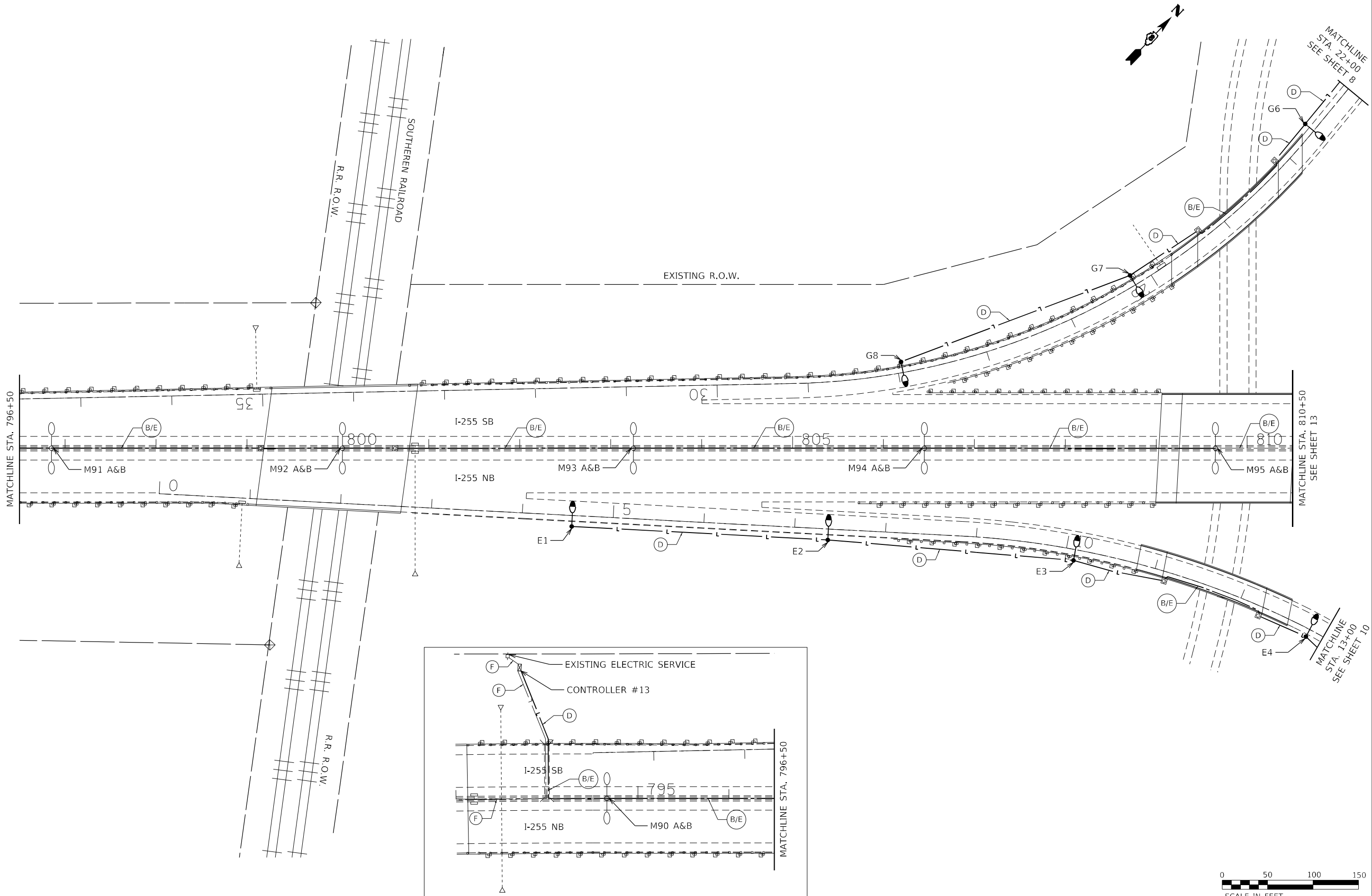
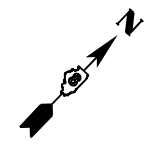
CRKT#	FROM/TO	ELECTRIC CABLE ASSEMBLY IN CONDUIT, 600V (XLP-TYPE TC) 2/C NO. 4 AND NO. 6	ELECTRIC CABLE ASSEMBLY IN CONDUIT, 600V (XLP-TYPE TC) 2/C NO. 6 AND NO. 8	ELECTRIC CABLE ASSEMBLY IN TRENCH, 600V (XLP-TYPE TC) 2/C NO. 4 AND NO. 6	ELECTRIC CABLE ASSEMBLY IN TRENCH, 600V (XLP-TYPE TC) 2/C NO. 6 AND NO. 8	REMOVE ELECTRIC CABLE FROM CONDUIT	COMMENT
15A	X57	X53			285		
15A	X53	X51	142		246	426	EX. UNDERGROUND CONDUIT
15A	X51	X49			220		
15A	X49	X47			301		
15A	X47	X45			245		
15A	X45	X43			351		
15A	X43	X41			315		
15A	X41	CNTLR #15			96		
15A	X58	X54 & X55			302		
15A	X54 & X55	X52	70		222	210	EX. UNDERGROUND CONDUIT
15A	X56	X52	66		374	198	EX. UNDERGROUND CONDUIT
15A	X52	X50			290		
15A	X50	X48			300		
15A	X48	X46			307		
15A	X46	X44			300		
15A	X44	X42			251		
15A	X42	CNTLR #15	132		176	396	EX. UNDERGROUND CONDUIT
15B	E1	E2			282		
15B	E2	E3			272		
15B	E3	E4	118		152	354	EX. BRIDGE CONDUIT
15B	E4	E5			260		
15B	E5	E6	39		277	117	EX. UNDERGROUND CONDUIT
15B	E6	E7	39		305	117	EX. UNDERGROUND CONDUIT
15B	E7	E8			200		
15B	F6	F5			194		
15B	F5	F4			172		
15B	F4	F3			178		
15B	F3	F2			205		
15B	F2	F1			198		
15B	X28	X30			235		
15B	X30	F1			147		
15B	F1	X32	36		223	108	EX. UNDERGROUND CONDUIT
15B	X32	E8	40		176	120	EX. UNDERGROUND CONDUIT
15B	E8	X34			202		
15B	X34	X36			331		
15B	X36	X38			316		
15B	X38	X40			273		
15B	X40	CNTLR #15	132		84	396	EX. UNDERGROUND CONDUIT
15C	C6	C5			277		
15C	C5	C4			275		
15C	C4	C3			298		
15C	X29	D6			215		
15C	D6	D5			179		
15C	D5	D4			180		
15C	D1	D2			174		
15C	D2	D3			185		
15C	D3	D4			179		
15C	D4	C3			106	198	EX. UNDERGROUND CONDUIT
15C	C3	C2	66		320		
15C	C2	C1			320		
15C	X31	X33			361		
15C	X33	C1	35		149	105	EX. UNDERGROUND CONDUIT
15C	C1	X35			256		
15C	X35	X37			320		
15C	X37	X39			292		
15C	X39	CNTLR #15					
15D	M103 A&B	M102 A&B	322			966	
15D	M102 A&B	M101 A&B	320			960	
15D	M96 A&B	M97 A&B	320			960	
15D	M97 A&B	M98 A&B	320			960	
15D	M98 A&B	M99 A&B	320			960	
15D	M99 A&B	M100 A&B	320			960	
15D	M100 A&B	M101 A&B	320			960	
15D	M101 A&B	CNTLR #15	94		1359	282	EX. UNDERGROUND CONDUIT
TOTAL			226	3025	2500	12345	9753

CRKT#	POLE #	ROADWAY	STATION	LUMINAIRE, LED, ROADWAY OUTPUT DESIGNATION H	LIGHT POLE, ALUMINUM 50 FT. M.H. W/TB 2-15 FT. MAST ARM	LIGHT POLE, ALUMINUM 50 FT. M.H. W/TB 15 FT. MAST ARM
15B	E1	RMP E RT.	4+55		1	
15B	E2	RMP E RT.	7+37		1	
15B	E3	RMP E RT.	10+10		1	
15B	E4	RMP E RT.	12+83		1	
15B	E5	RMP E RT.	15+50		1	
15B	E6	RMP E RT.	18+17		1	
15B	E7	RMP E RT.	20+87		1	
15B	E8	RMP E RT.	22+97		1	
15B	F1	RMP F RT.	3+30		1	
15B	F2	RMP F RT.	5+53		1	
15B	F3	RMP F RT.	7+80		1	
15B	F4	RMP F RT.	9+72		1	
15B	F5	RMP F RT.	11+55		1	
15B	F6	RMP F RT.	13+45		1	
15C	C1	RMP C RT.	10+65		1	
15C	C2	RMP C RT.	13+90		1	
15C	C3	RMP C RT.	17+10		1	
15C	C4	RMP C RT.	20+05		1	
15C	C5	RMP C RT.	22+90		1	
15C	C6	RMP C RT.	25+80		1	
15C	D1	RMP D RT.	2+60		1	
15C	D2	RMP D RT.	4+58		1	
15C	D3	RMP D RT.	6+55		1	
15C	D4	RMP D RT.	8+53		1	
15C	D5	RMP D RT.	10+52		1	
15C	D6	RMP D RT.	12+50		1	
15B	X28	IL 15 RT.	101+30		1	
15B	X29	IL 15 LT.	102+03		1	
15B	X30	IL 15 RT.	103+70		1	
15B	X31	IL 15 LT.	105+75		1	
15B	X32	IL 15 RT.	107+07		1	
15B	X33	IL 15 LT.	109+35		1	
15B	X34	IL 15 RT.	110+80		1	
15C	X35	IL 15 LT.	113+05		1	
15C	X36	IL 15 RT.	114+10		1	
15C	X37	IL 15 LT.	116+25		1	
15C	X38	IL 15 RT.	117+25		1	
15C	X39	IL 15 LT.	119+15		1	
15C	X40	IL 15 RT.	119+90		1	
15A	X41	IL 15 LT.	121+45		1	
15A	X42	IL 15 RT.	121+90		1	
15A	X43	IL 15 LT.	124+55		1	
15A	X44	IL 15 RT.	124+55		1	
15A	X45	IL 15 LT.	128+05		1	
15A	X46	IL 15 RT.	127+42		1	
15A	X47	IL 15 LT.	130+50		1	
15D	M96 A&B	BARRIER	812+85			1
15D	M97 A&B	BARRIER	816+05			
15D	M98 A&B	BARRIER	819+25			
15D	M99 A&B	BARRIER	822+45			
15D	M100 A&B	BARRIER	825+65			
15D	M101 A&B	BARRIER	828+85			
15D	M102 A&B	BARRIER	832+05			
15D	M103 A&B	BARRIER	835+25			
15A	X48	IL 15 RT.	130+50		1	
15A	X49	IL 15 LT.	133+51		1	
15A	X50	IL 15 RT.	133+51		1	
15A	X51	IL 15 LT.	135+71		1	
15A	X52	IL 15 RT.	136+39		1	
15A	X53	IL 15 LT.	139+43		1	
15A	X54 & X55	IL 15 RT.	139+28		2	
15A	X56	IL 15 RT.	138+60		1	
15A	X57	IL 15 LT.	142+27		1	
15A	X58	IL 15 RT.	142+27		1	
TOTAL				57	1	6

MODEL: Default
FILE: \\NAME: K:\PROJECTS\Projects_2022\22-IL-15-500_200-37_W03-1235_at_IL15\CAD_Sheets\08760-1-ent-schedule15.dgn

REV. - MS

 <p>GANDHI AND ASSOCIATES, INC. ENGINEERS AND PLANNERS 3015 N. NORTHWEST HIGHWAY SUITE 205 CHICAGO, ILLINOIS 60639 TEL: (773) 774-5900</p>	USER NAME = brice	DESIGNED - BR	REVISED -	STATE OF ILLINOIS DEPARTMENT OF TRANSPORTATION	SCHEDULE OF QUANTITIES	F.A.I. RTE. = 255	SECTION = 82-4L-1	COUNTY = ST. CLAIR	TOTAL SHEETS = 17	SHEET NO. = 6
	PLOT SCALE = 0:2,0000' = 1" / in.	CHECKED - NT	REVISED -			SCALE: N.T.S.	ILLINOIS			
	PLOT DATE = 4/19/2023	DATE = 2023-04-19	REVISED -			CONTRACT NO. 76R01				



MODEL: Default
 FILE NAME: C:\PROJECTS\Projects_2022\22-IL-500-200-37_W03-1235.at_IL-500-200-37_IL-500-200-37-ent-light-01.dgn

GA GANDHI AND ASSOCIATES, INC.
 ENGINEERS AND PLANNERS
 6035 N. NORTHWEST HIGHWAY
 SUITE 200
 CHICAGO, ILLINOIS 60630 TEL: 773-774-5900

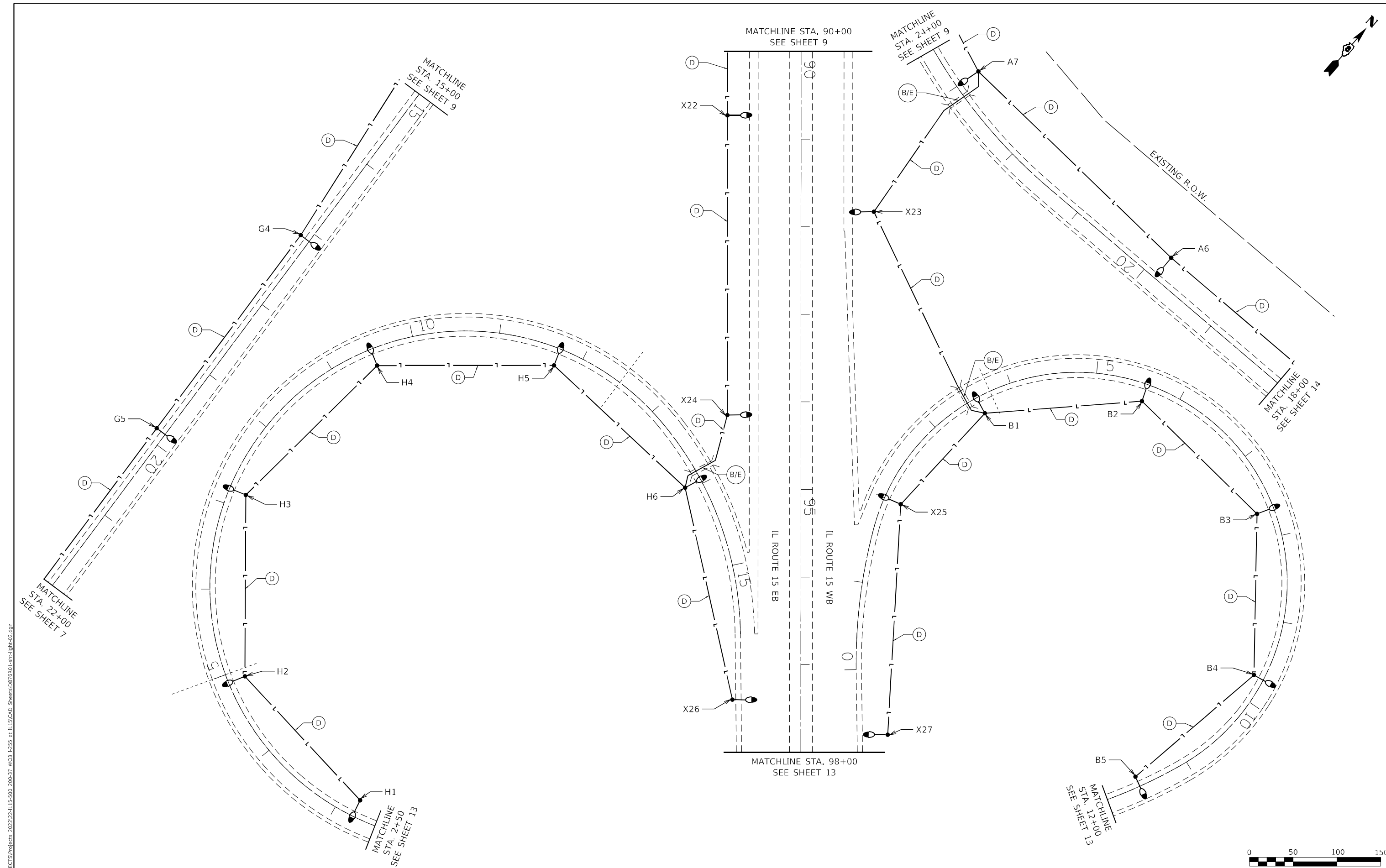
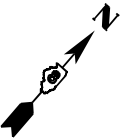
USER NAME = brice	DESIGNED - BR	REVISED -
	DRAWN - BR	REVISED -
PLOT SCALE = 100:0.0000 " = 1" / in.	CHECKED - NT	REVISED -
PLOT DATE = 3/6/2023	DATE - 2023-03-03	REVISED -

STATE OF ILLINOIS
DEPARTMENT OF TRANSPORTATION

LIGHTING RETROFIT PLAN

SCALE: 1" = 50'
 STA. 793+00 TO STA. 810+50

F.A.I. RTE.	SECTION	COUNTY	TOTAL SHEETS	SHEET NO.
255	82-4L-1	ST. CLAIR	17	7
			CONTRACT NO. 76R01	
ILLINOIS				



MODEL: Default
 FILE NAME: C:\PROJECTS\Projects_2022\22-IL-5-500_200-37_W03_L235.at: IL-5CAD_Sheets\0876901-srt\light-02.dgn

GA GANDHI AND ASSOCIATES, INC.
 ENGINEERS AND PLANNERS
 6035 N. NORTHWEST HIGHWAY
 SUITE 206
 CHICAGO, ILLINOIS 60630 TEL: 773-774-5900

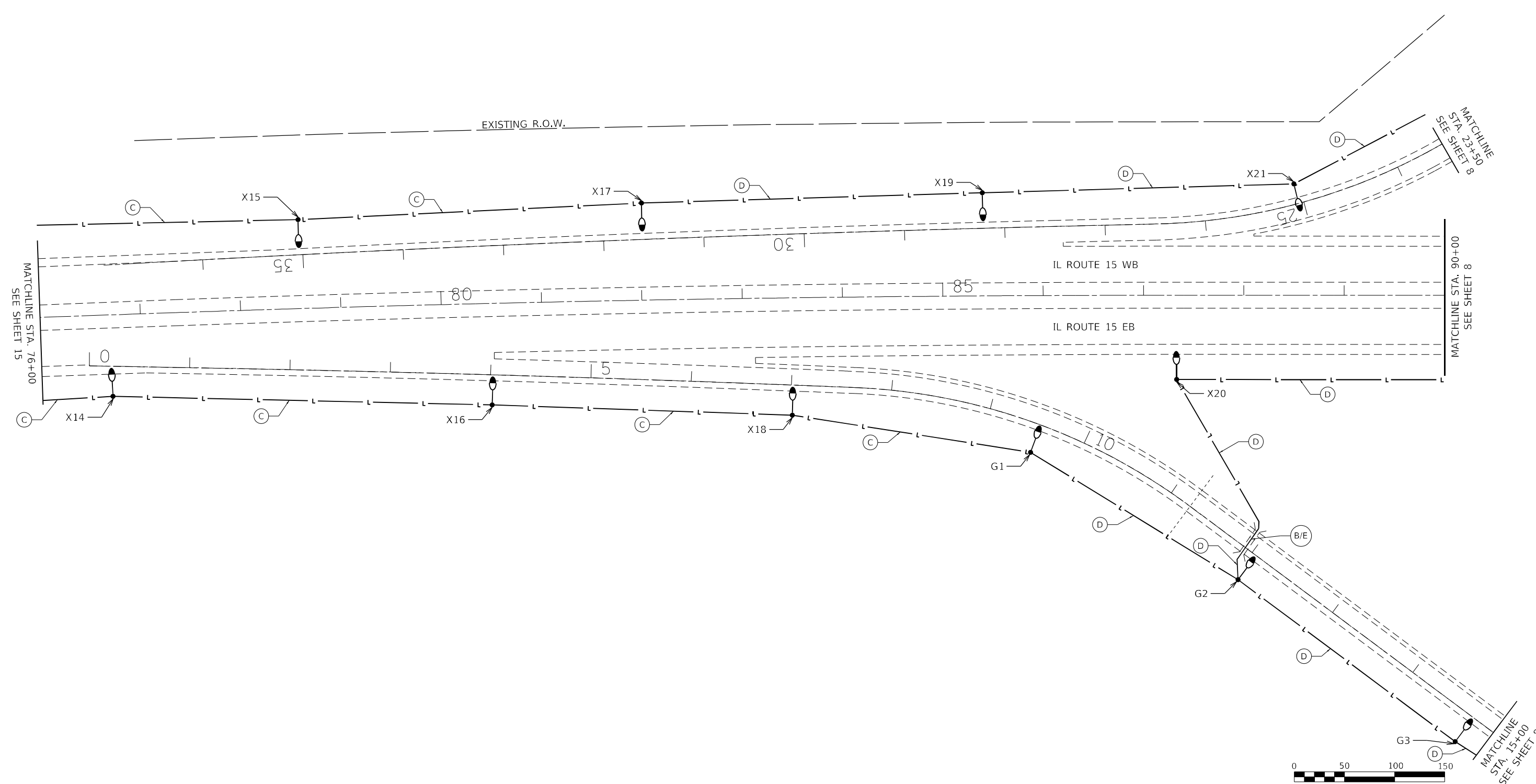
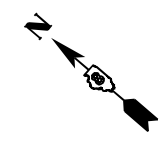
USER NAME = brice	DESIGNED - BR	REVISED -
DRAWN - BR	REVISOR -	
PLOT SCALE = 100:0.0000 " = 1" / in.	CHECKED - NT	REVISOR -
PLOT DATE = 3/6/2023	DATE - 2023-03-03	REVISOR -

STATE OF ILLINOIS
DEPARTMENT OF TRANSPORTATION

LIGHTING RETROFIT PLAN

SCALE: 1" = 50' STA. 90+00 TO STA. 98+00

F.A.I. RTE.	SECTION	COUNTY	TOTAL SHEETS	SHEET NO.
255	82-4L-1	ST. CLAIR	17	8
				CONTRACT NO. 76R01
ILLINOIS				



MODEL: Default
 FILE NAME: C:\PROJECTS\Projects_2022\22-IL-15-500_200-37_W03_L235.at: IL15CAD_Sheets\0876R01-light-03.dgn

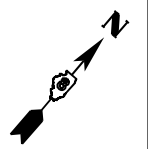

GANDHI AND ASSOCIATES, INC.
 ENGINEERS AND PLANNERS
 5035 N. NORTHWEST HIGHWAY
 SUITE 206
 CHICAGO, ILLINOIS 60630 TEL: 773-774-590

USER NAME = brice	DESIGNED - BR	REVISED -
DRAWN - BR	REVISOR -	
PLOT SCALE = 100:0.0000 " = 1" / in.	CHECKED - NT	REVISED -
PLOT DATE = 3/6/2023	DATE - 2023-03-03	REVISED -

STATE OF ILLINOIS
DEPARTMENT OF TRANSPORTATION

LIGHTING RETROFIT PLAN
 SCALE: 1" = 50'
 STA. 76+00 TO STA. 90+00

F.A.I. RTE.	SECTION	COUNTY	TOTAL SHEETS	SHEET NO.
255	82-4L-1	ST. CLAIR	17	9
ILLINOIS			CONTRACT NO. 76R01	



MODEL: Default
 FILE NAME: C:\PROJECTS\Projects\2022\22-IL-500-200-37-W03-L235.at\IL-500-200-37-W03-L235.at\IL-500-200-37-W03-L235.at\Light-04.dgn
 PROJECT: 2022-22-IL-500-200-37-W03-L235



GANDHI AND ASSOCIATES, INC.
 ENGINEERS AND PLANNERS
 6035 N. NORTHWEST HIGHWAY
 SUITE 206
 CHICAGO, ILLINOIS 60630 TEL: (773) 774-5900

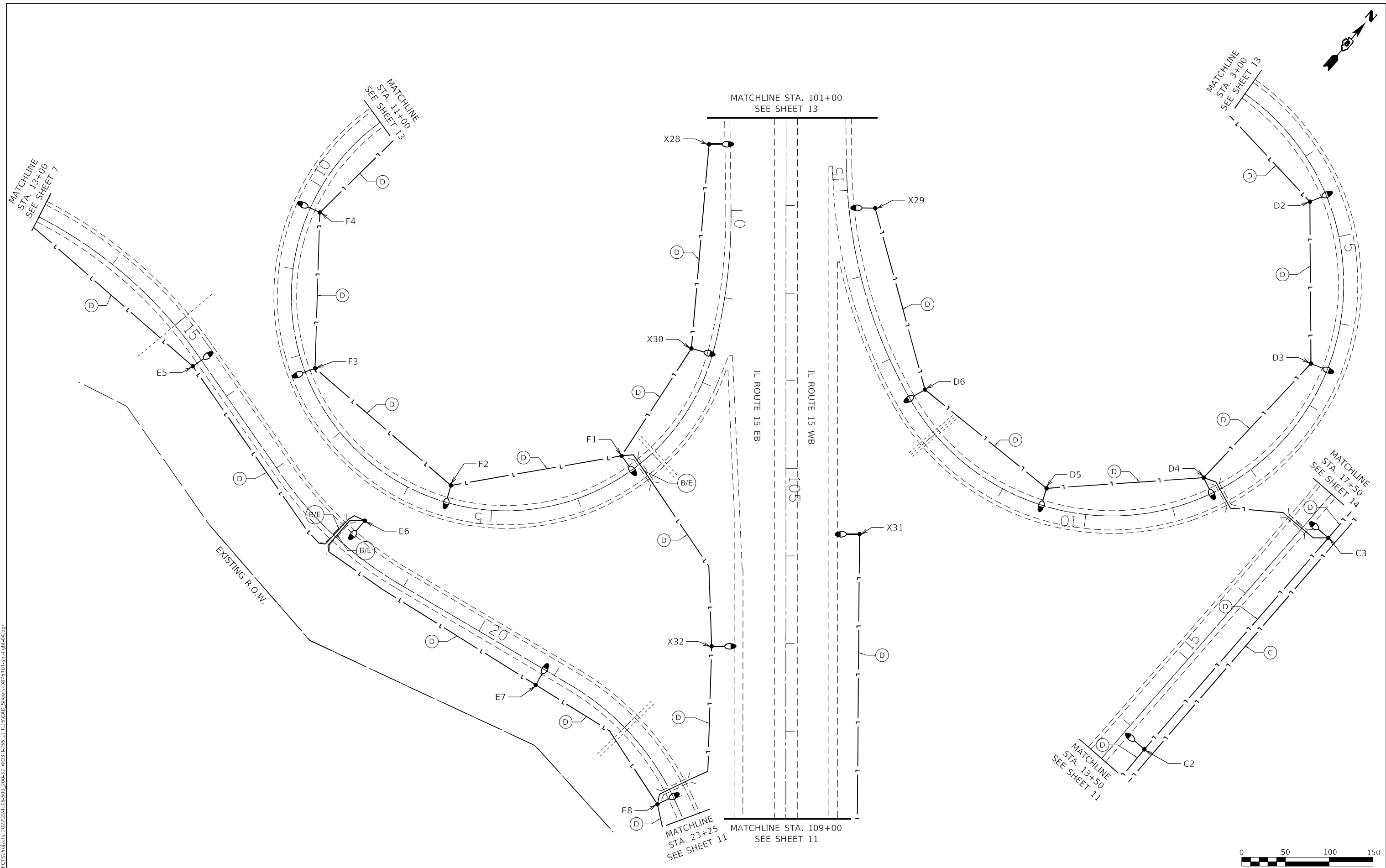
USER NAME = brice	DESIGNED - BR	REVISED -
DRAWN - BR	REVISED -	
PLOT SCALE = 100:0.0000 " = 1" / in.	CHECKED - NT	REVISED -
PLOT DATE = 3/6/2023	DATE - 2023-03-03	REVISED -

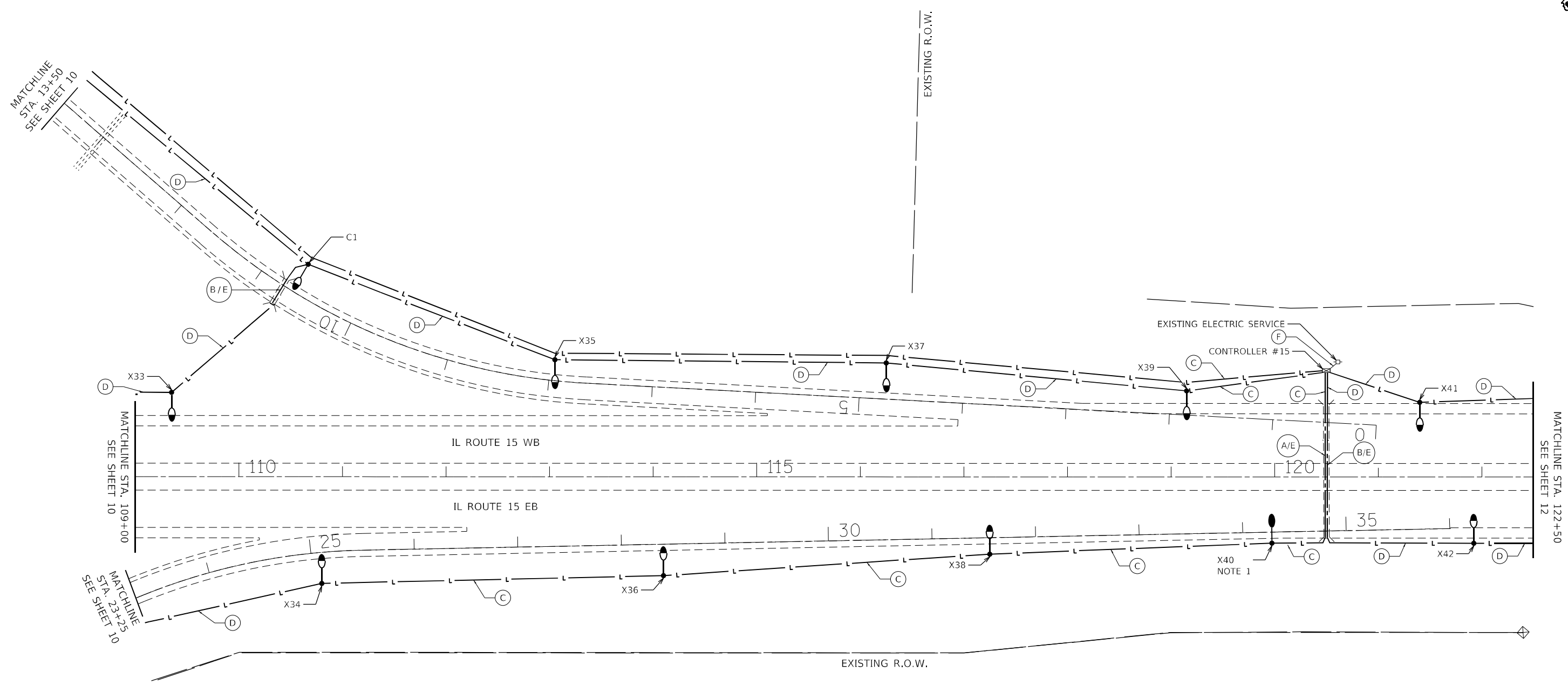
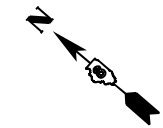
STATE OF ILLINOIS
DEPARTMENT OF TRANSPORTATION

LIGHTING RETROFIT PLAN

SCALE: 1" = 50' STA. 101+00 TO STA. 109+00

F.A.I. RTE.	SECTION	COUNTY	TOTAL SHEETS	SHEET NO.
255	82-4L-1	ST. CLAIR	17	10
			CONTRACT NO. 76R01	
ILLINOIS				



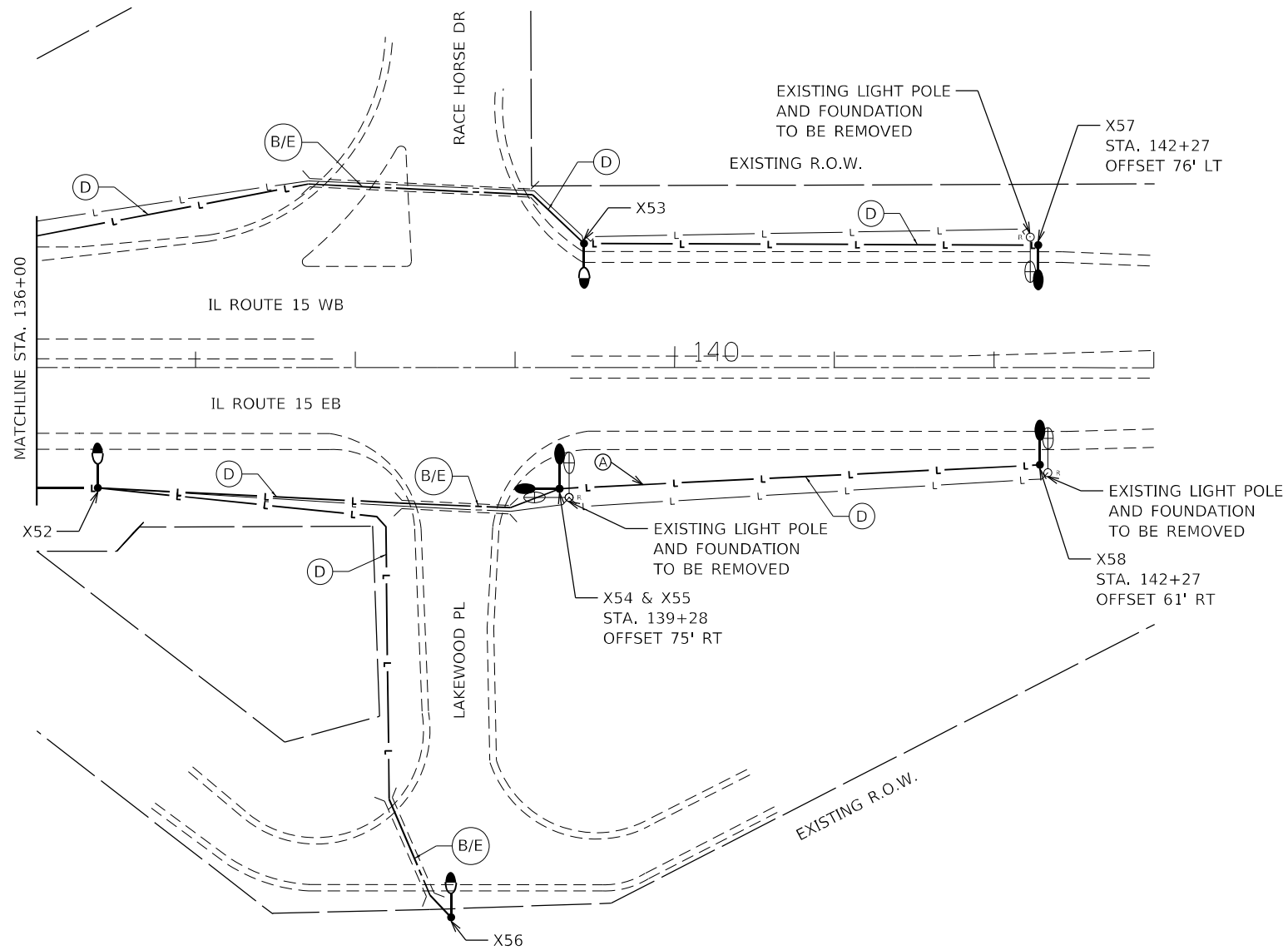
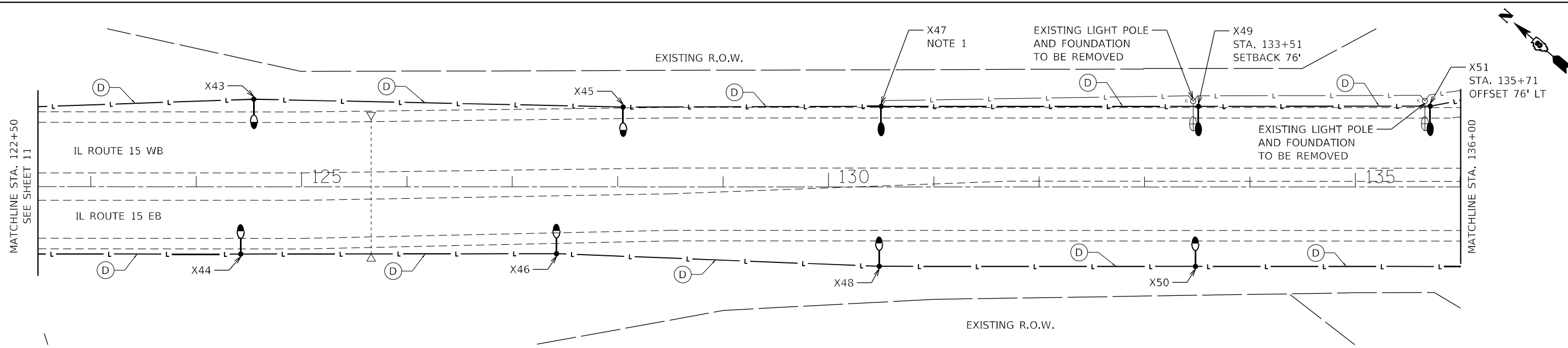


- NOTES:
- INSTALL NEW LIGHTING UNIT ON EXISTING FOUNDATION.



MODEL: Default
 FILE NAME: C:\PROJECTS\Projects_2022\22-IL-500-300-37_W03_L255.at: IL15CAD_Sheets\0876R01-light-05.dgn

GANDHI AND ASSOCIATES, INC. ENGINEERS AND PLANNERS 5035 N. NORTHWEST HIGHWAY SUITE 206 CHICAGO, ILLINOIS 60630 TEL: 773-774-5900	USER NAME = brice	DESIGNED - BR	REVISED -	STATE OF ILLINOIS DEPARTMENT OF TRANSPORTATION	LIGHTING RETROFIT PLAN		F.A.I. RTE. = 255	SECTION = 82-4L-1	COUNTY = ST. CLAIR	TOTAL SHEETS = 17	SHEET NO. = 11		
	PLOT SCALE = 100:0.0000 " = 1" / in.	CHECKED - NT	REVISED -				SCALE: 1" = 50'		STA. 109+00 TO STA. 122+50		ILLINOIS		CONTRACT NO. 76R01
	PLOT DATE = 3/6/2023	DATE = 2023-03-03	REVISED -										



NOTES:

1. INSTALL NEW LIGHTING UNIT ON EXISTING FOUNDATION.
2. POLE OFFSETS FROM CENTERLINE ARE MEASURED WITH AN EXPECTED SETBACK OF 11 FEET FROM EDGE OF TRAVELED PAVEMENT. MAINTAIN REQUIRED MINIMUM CLEARANCE OF 10 FEET FROM ALL OVERHEAD AERIAL LINES.



MODEL: Default
FILE NAME: C:\PROJECTS\Projects_2022\22-IL-500-200-37_W03_L235.at: IL15CAD_Sheets\087690-ent\light-05.dgn



USER NAME = brice	DESIGNED - BR	REVISED -
	DRAWN - BR	REVISED -
PLOT SCALE = 100:0.0000 " = 1" / in.	CHECKED - NT	REVISED -
PLOT DATE = 3/6/2023	DATE - 2023-03-03	REVISED -

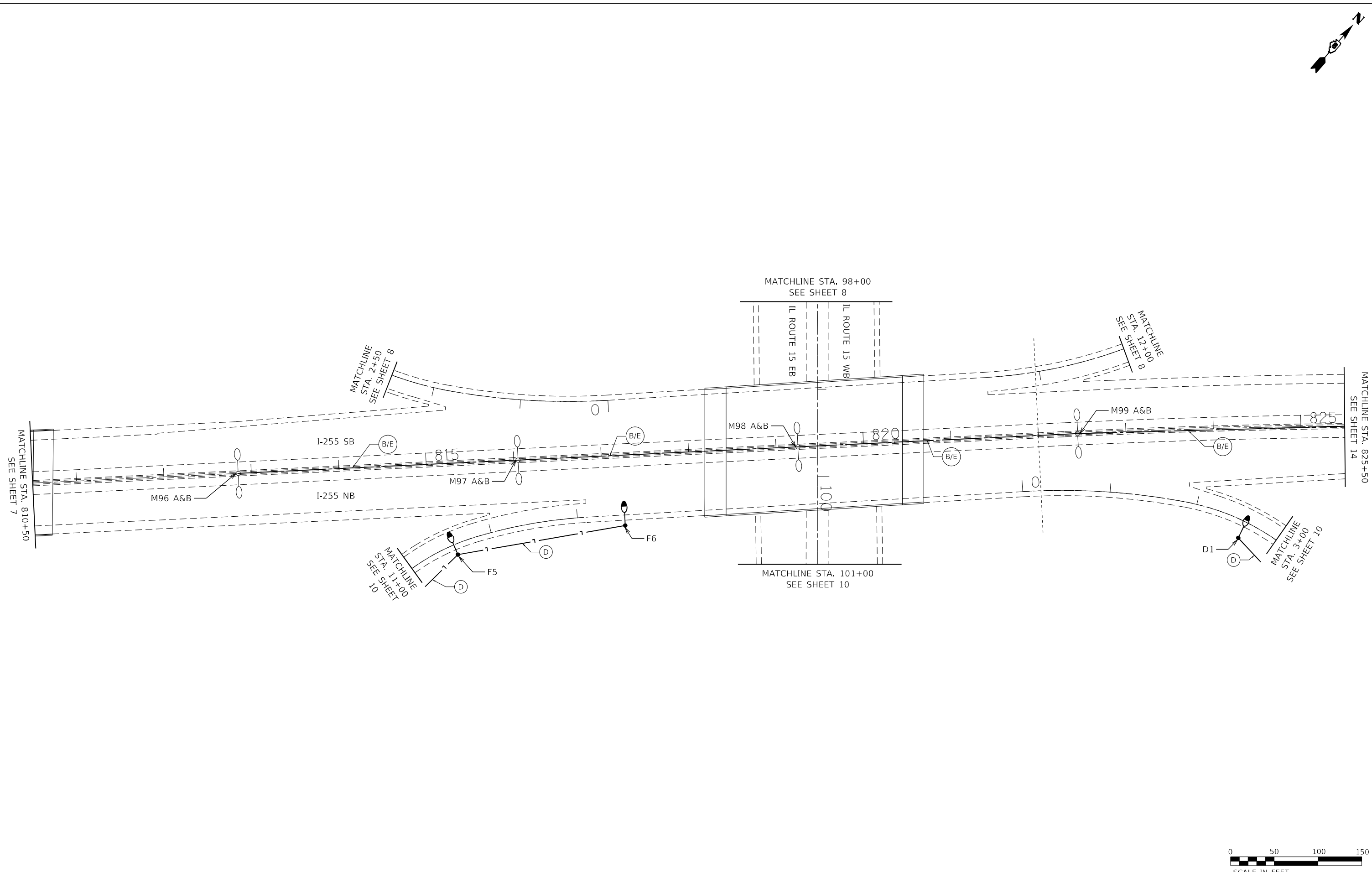
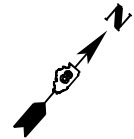
**STATE OF ILLINOIS
DEPARTMENT OF TRANSPORTATION**

LIGHTING RETROFIT PLAN

SCALE: 1" = 50' STA. 122+50 TO STA. 143+00

F.A.I. RTE.	SECTION	COUNTY	TOTAL SHEETS	SHEET NO.
255	82-4L-1	ST. CLAIR	17	12
				CONTRACT NO. 76R01

ILLINOIS



MODEL: Default
 FILE NAME: C:\PROJECTS\Projects_2022\22-IL-15-500_200-37_W03_L235.at_IL15CAD_Sheets\0876R01-light-07.dgn

GA GANDHI AND ASSOCIATES, INC.
 ENGINEERS AND PLANNERS
 6035 N. NORTHWEST HIGHWAY
 SUITE 206
 CHICAGO, ILLINOIS 60630 TEL: 773.774.590

USER NAME = brice	DESIGNED - BR	REVISED -
DRAWN - BR	REVISOR -	
PLOT SCALE = 100:0.0000 " = 1" / in.	CHECKED - NT	REVISED -
PLOT DATE = 3/6/2023	DATE - 2023-03-03	REVISED -

**STATE OF ILLINOIS
 DEPARTMENT OF TRANSPORTATION**

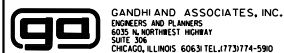
LIGHTING RETROFIT PLAN

SCALE: 1" = 50' STA. 810+50 TO STA. 825+50



F.A.I. RTE.	SECTION	COUNTY	TOTAL SHEETS	SHEET NO.
255	82-4L-1	ST. CLAIR	17	13
				CONTRACT NO. 76R01
ILLINOIS				

MODEL: Default
 FILE NAME: C:\PROJECTS\Projects\2022\22-IL-500-200-37-W03-L235.at\IL-500-200-37-W03-L235.at\IL-500-200-37-W03-L235.at\Light-08.dgn



USER NAME = brice	DESIGNED - BR	REVISED -
DRAWN - BR	REVISED -	
PLOT SCALE = 100:0.0000 "/>		

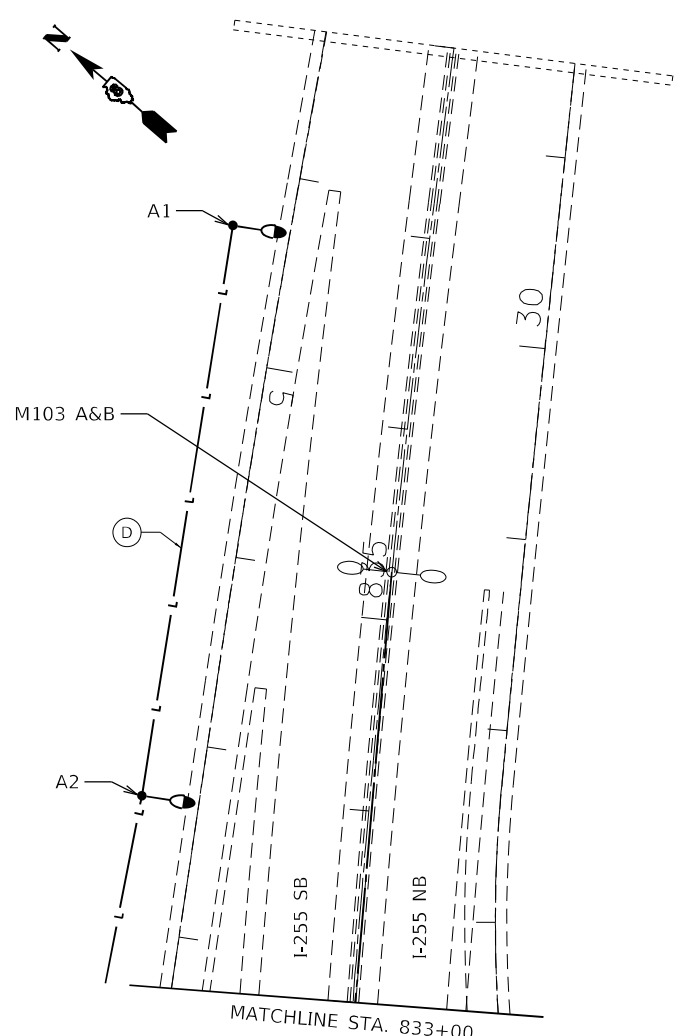
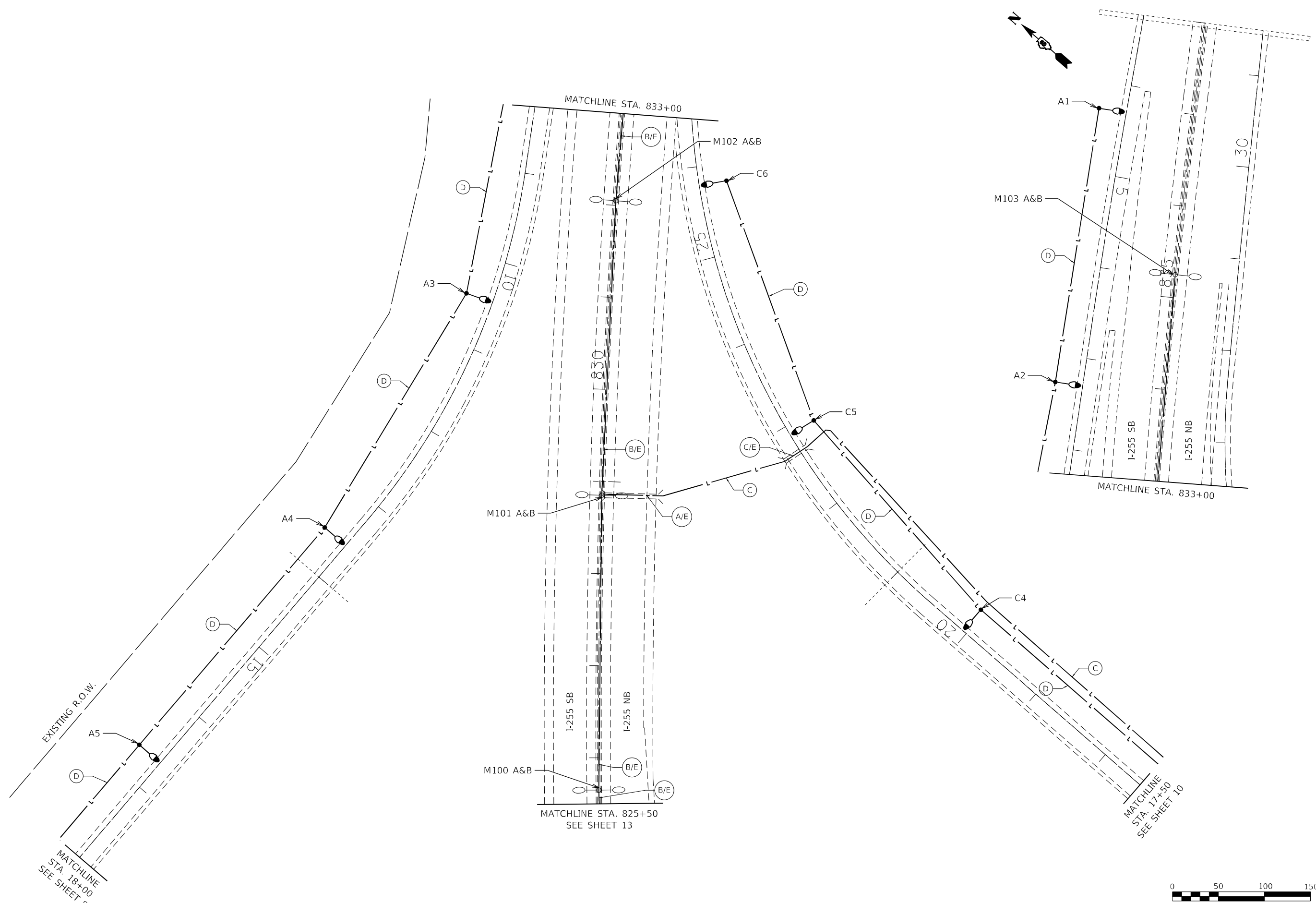
CHECKED - NT	DATE - 2023-03-03	REVISED -

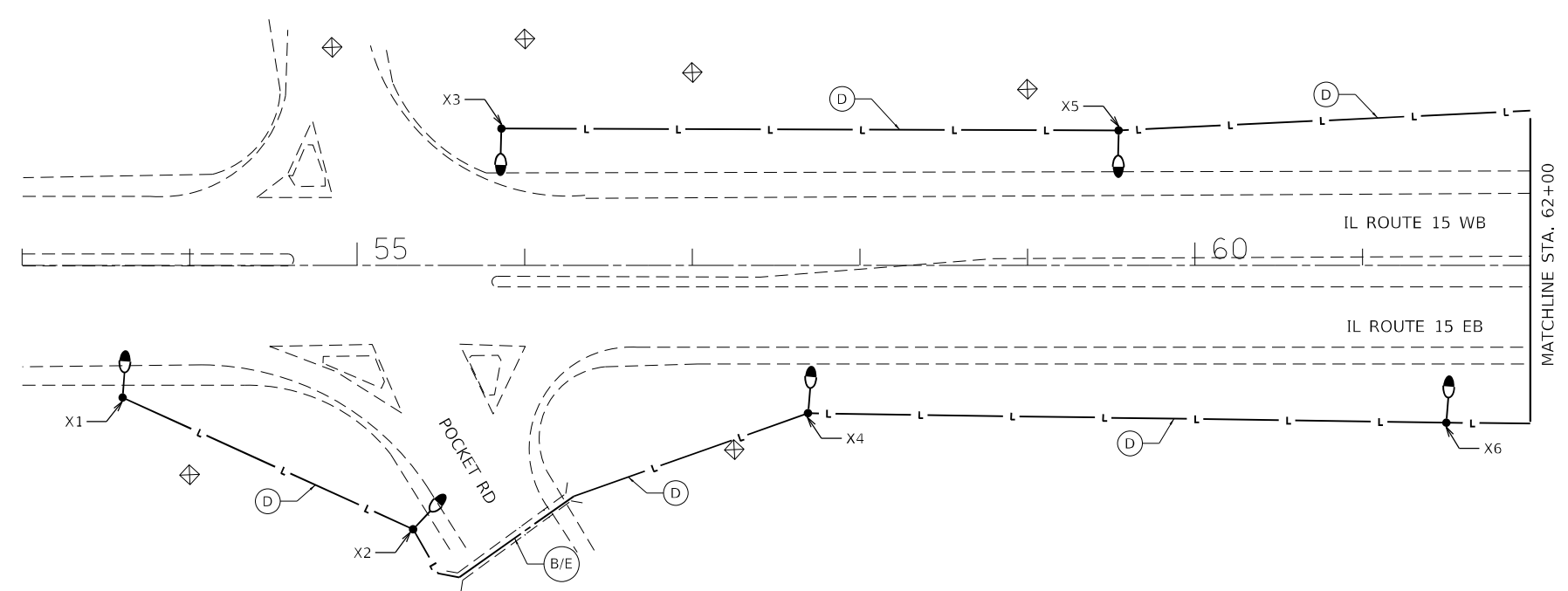
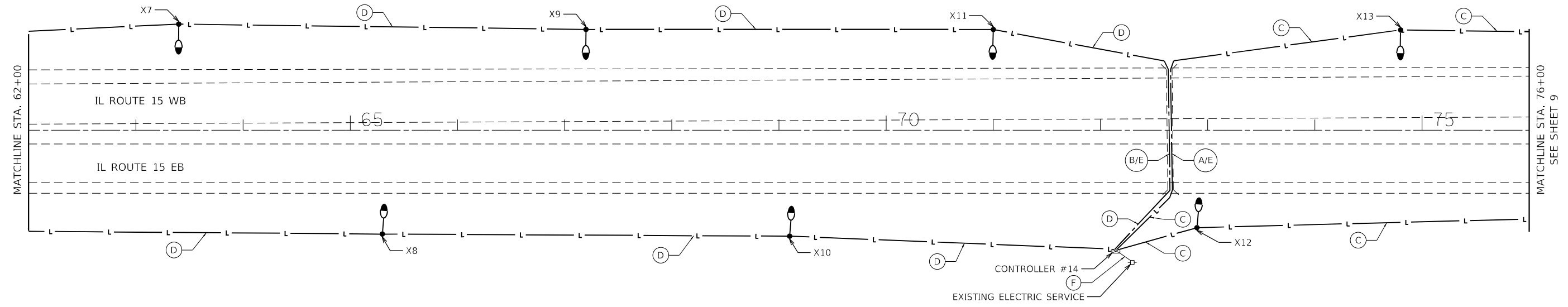
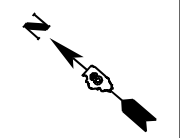
**STATE OF ILLINOIS
 DEPARTMENT OF TRANSPORTATION**

LIGHTING RETROFIT PLAN

SCALE: 1" = 50' STA. 825+50 TO STA. 838+00

F.A.I. RTE.	SECTION	COUNTY	TOTAL SHEETS	SHEET NO.
255	82-4L-1	ST. CLAIR	17	14
CONTRACT NO. 76R01				





MODEL: Default
 FILE NAME: C:\PROJECTS\Projects_2022\22-IL-5500-200-37-W03-L235.at-IL15CAD_Sheets\0876R01-ent-light-09.dgn



USER NAME = brice	DESIGNED - BR	REVISED -
PLOT SCALE = 100:0.0000 " = 1" / in.	DRAWN - BR	REVISED -
PLOT DATE = 3/6/2023	CHECKED - NT	REVISED -
	DATE - 2023-03-03	REVISED -

STATE OF ILLINOIS
DEPARTMENT OF TRANSPORTATION

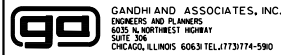
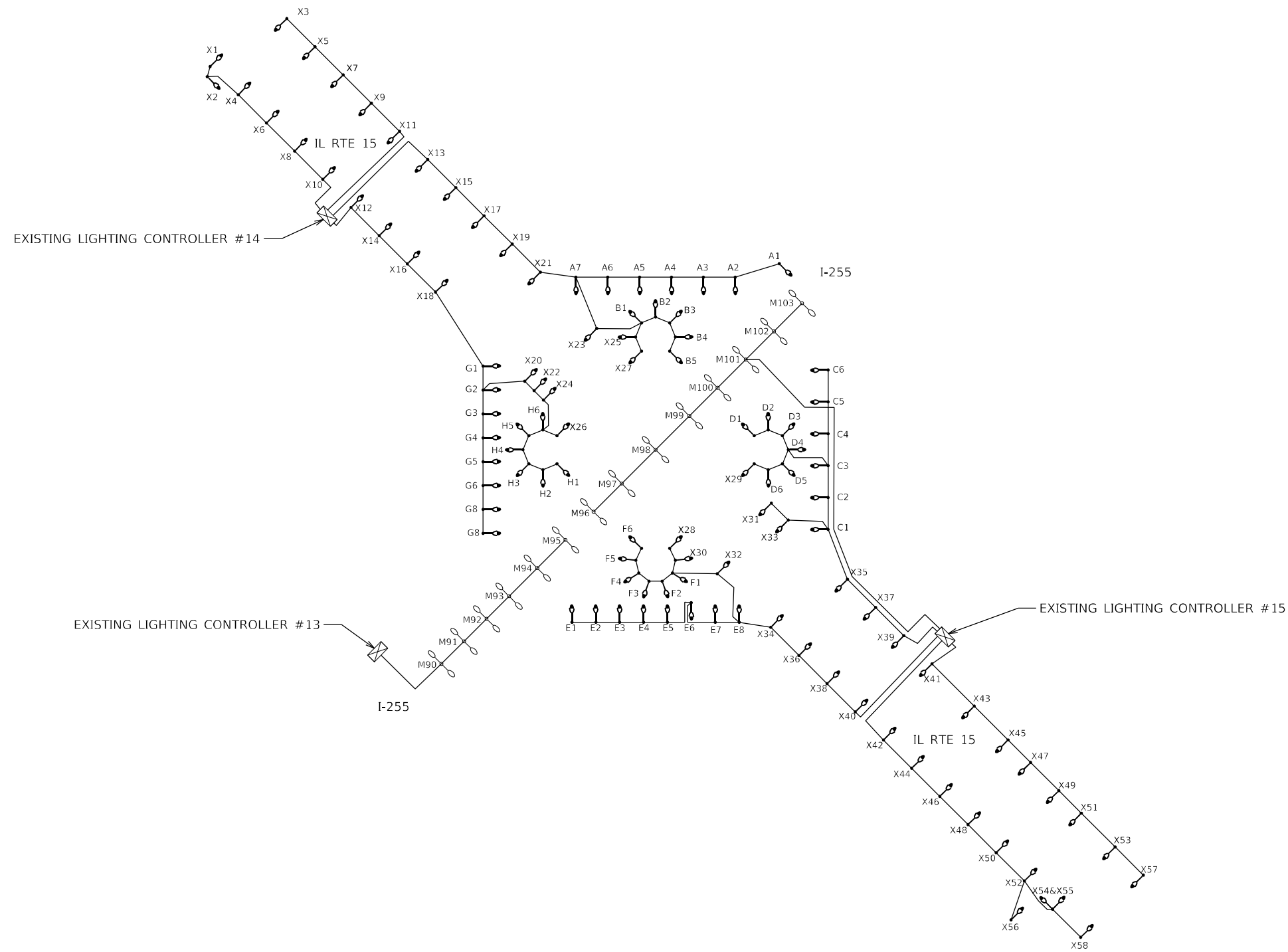
LIGHTING RETROFIT PLAN

SCALE: 1" = 50' STA. 53+00 TO STA. 76+00

F.A.I. RTE.	SECTION	COUNTY	TOTAL SHEETS	SHEET NO.
255	82-4L-1	ST. CLAIR	17	15
CONTRACT NO. 76R01				

ILLINOIS

MODEL: Default
 FILE NAME: C:\PROJECTS\Projects_2022\22-IL-500-200-37-W03-L255.at: IL-15(CAD_Sheets\0876801-int-ctrl-wiring.dgn



GANDHI AND ASSOCIATES, INC.
 ENGINEERS AND PLANNERS
 6035 N. NORTHWEST HIGHWAY
 SUITE 306
 CHICAGO, ILLINOIS 60630 TEL: 773-774-590

USER NAME = brice	DESIGNED - BR	REVISED -
	DRAWN - BR	REVISED -
PLOT SCALE = 0:2.0000 " = 1" / in.	CHECKED - NT	REVISED -
PLOT DATE = 3/6/2023	DATE - 2023-03-03	REVISED -

**STATE OF ILLINOIS
 DEPARTMENT OF TRANSPORTATION**

SINGLE LINE WIRING DIAGRAM

SCALE: N.T.S.

F.A.I. RTE.	SECTION	COUNTY	TOTAL SHEETS	SHEET NO.
255	82-4L-1	ST. CLAIR	17	16
ILLINOIS			CONTRACT NO. 76R01	



Luminaire Performance Table



Project

Date	Contract Number	Section Number	County
12/30/22	D876R01	82-4L-1	St. Clair
Marked Route Number		Municipality	
255		Cahokia Heights	

Roadway

Lane Width	# of Lanes	Median Width	I.E.S. Surface Classification	Q-Zero Value
12	3	40'	R3	0.07

Structure

Mounting Height	Arm Length	Set-Back	Number of Luminaires (Highmast & Sign Lighting Only)
50'	8'	8'	N/A

Luminaire

Description	I.E.S. Lateral Distribution	I.E.S. Vertical Distribution	
Output Type H	Type II / Type III	Short / Medium	
Total Light Loss Factor (LLF)	B-U-G Rating	Shields	Dimming Protocol
0.70	B3-U0-G3	N/A	0-10 V

Layout

Spacing (to Nearest 5 ft)	Configuration (Opposite, Staggered, 1 Sided, or Median)
350'	Staggered

Performance

Average Illuminance, E_{AVE} (fc)	Uniformity Ratio, E_{AVE}/E_{MIN}		
0.9	3.0		
Average Luminance, L_{AVE} (cd/m ²)	Uniformity Ratio, L_{AVE}/L_{MIN}	Uniformity Ratio, L_{MAX}/L_{MIN}	Veiling Luminance Ratio, L_V/L_{AVE}
0.6	3.0	6.0	0.3

Light Trespass

Distance to ROW (behind pole)	Max. Horizontal Illuminance at ROW, E_H	Max. Vertical Illuminance at ROW, E_V
N/A	N/A	N/A

Notes

- Set back is from edge of pavement (white line) except for sign luminaires when it is vertical and horizontal distance from the sign to the luminaire.
- Lighting calculations shall be performed with all luminaires oriented toward and perpendicular to roadway.
- Total light loss factor (LLF) = the product of "lumen maintenance" (LLD) = 0.9, "dirt depreciation" (LDD) = 0.8, and "equipment factors" (EF) = 0.95.
- Performance requirements shall be the minimum acceptable standards of photometric performance for the luminaire based on the given conditions above.
- Calculations are to be performed in one direction only.
- Compliance with performance criteria shall be held to one significant digit.

Printed 12/28/22

BDE 5630 (04/10/19)

MODEL Default FILE NAME: C:\PROJECTS\Projects_2022\22-IL-500-200-37-W03-1235.at: IL15\CAD_Sheets\0876R01-ent-bde5630.dgn