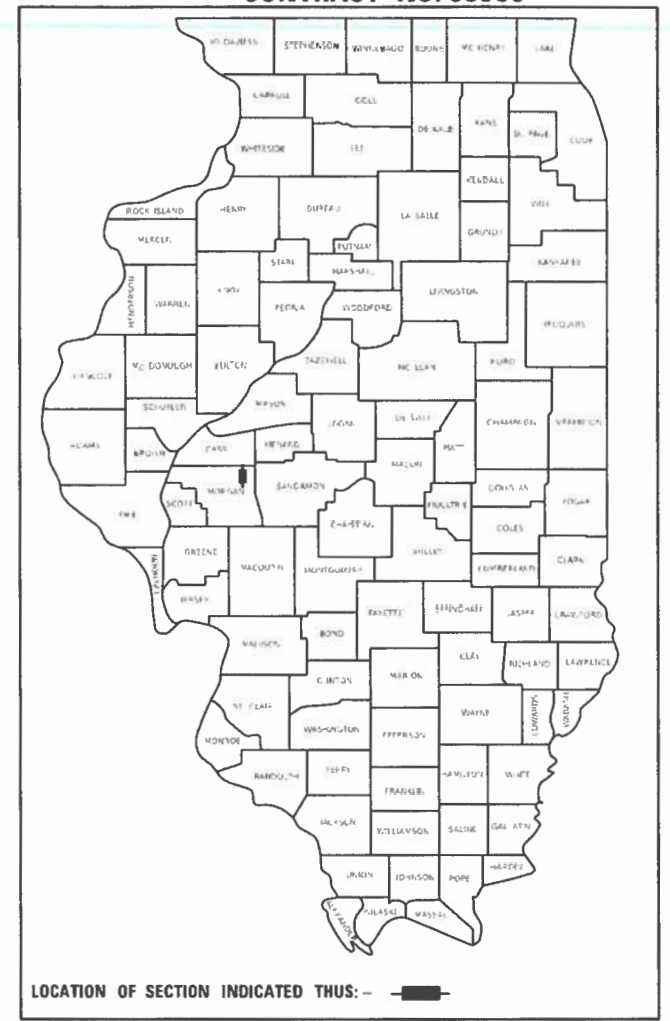


F.A.S. RTE.	SECTION	COUNTY	TOTAL SHEETS	SHEET NO.
614	19-00109-00-RS	MORGAN	31	1
		ILLINOIS	CONTRACT NO. 93805	

STATE OF ILLINOIS
DEPARTMENT OF TRANSPORTATION
PLANS FOR PROPOSED
SURFACE TRANSPORTATION RURAL PROGRAM
/ TRUCK ACCESS ROUTE PROGRAM
MORGAN COUNTY HIGHWAY
DEPARTMENT
SECTION 19-00109-00-RS
F.A.S. ROUTE 614
PROJECT NO. GBUW(998)
COUNTY HIGHWAY 123 RESURFACING
 FROM OLD ROUTE 36 TO THE MORGAN/CASS COUNTY LINE
JOB NO. C-96-077-21

CONTRACT NO. 93805



DESCRIPTION OF WORK
 THIS PROJECT CONSISTS OF IMPROVING CH 123 FROM OLD ROUTE 36 IN ALEXANDER NORTH TO THE MORGAN/CASS COUNTY LINE, WITH AN OMISSION AT I-72. THE PROPOSED WORK CONSISTS OF RESURFACING THE EXISTING PAVEMENT, CONSTRUCTING AGGREGATE WEDGE SHOULDERS, IMPROVING ENTRANCE AND SIDEROAD RETURNS, ADJUSTING SUPERELEVATION ON CURVES, PAVEMENT MARKING, AND OTHER ASSOCIATED IMPROVEMENTS.

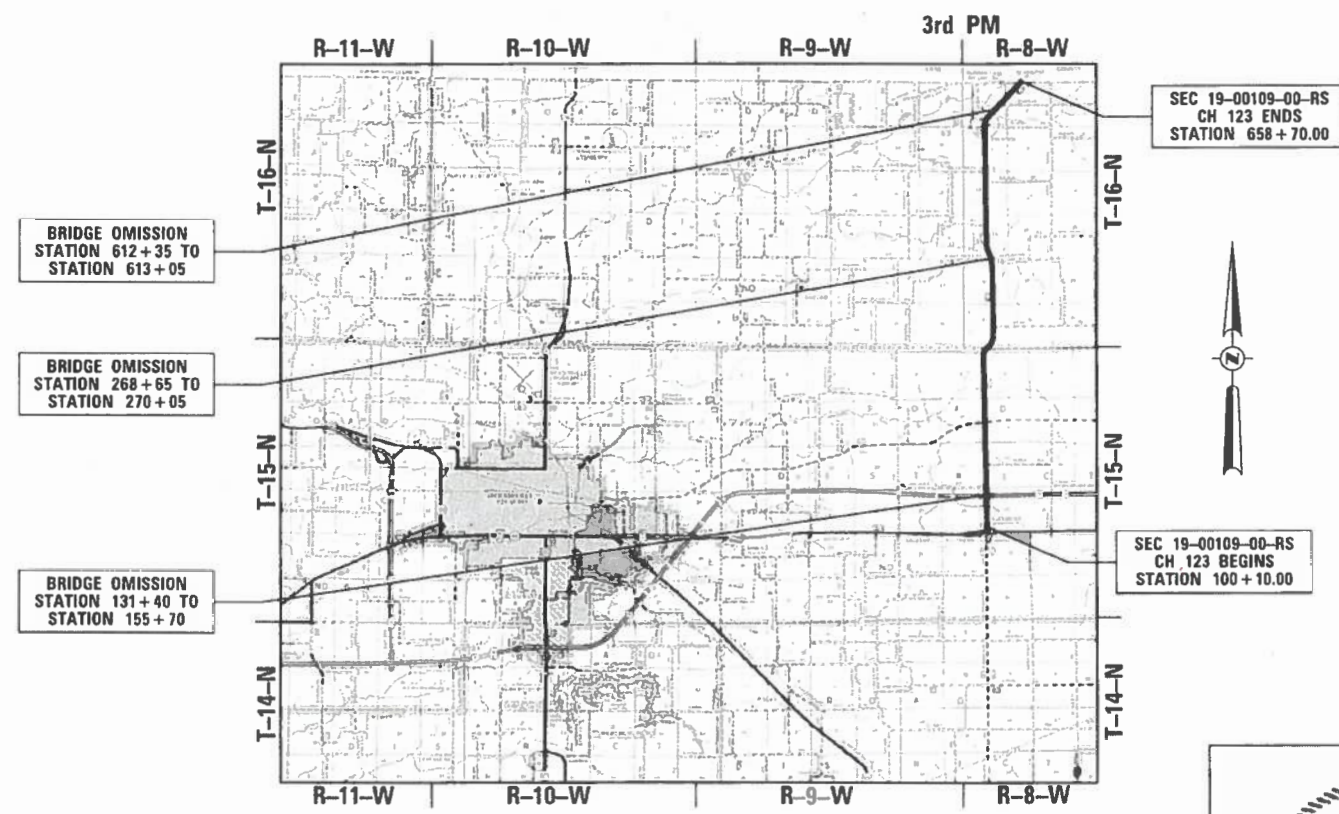
INDEX OF SHEETS

1	COVER
2	GENERAL NOTES AND HIGHWAY STANDARDS
3-4	SUMMARY OF QUANTITIES
5-6	TYPICAL SECTIONS
7-9	SCHEDULES OF QUANTITIES
10-28	DOUBLE ROADWAY PLANS
29-31	SPECIAL DETAILS

ELECTRIC
 AMEREN ILLINOIS
 1900 W LAFAYETTE STREET
 JACKSONVILLE, IL 62650
 MENARD ELECTRIC COOP
 14300 IL 97
 PO BOX 200
 PETERSBURG, IL 62675
 ORSTED NORTH AMERICA
 401 NORTH MICHIGAN AVENUE
 SUITE 501
 CHICAGO, IL 60611

COMMUNICATIONS
 FRONTIER COMMUNICATIONS
 300 WEST BEECHER STREET
 JACKSONVILLE, IL 62650
 CASSCOMM
 100 REDBUD ROAD
 VIRGINIA, IL 62691
 METRO COMMUNICATIONS
 8 SOUTH WASHINGTON STREET
 PO BOX 555
 SULLIVAN, ILLINOIS 61951

WATER
 NORTH MORGAN WATER COOP
 1440 WEST WALNUT STREET
 SUITE 1
 JACKSONVILLE, IL 62650
 ALEXANDER WATER DISTRICT
 PO BOX 24
 ALEXANDER, IL 62601



LOCATION MAP

APPROXIMATE SCALE

GROSS LENGTH = 55,860 FT. = 10.58 MILE
 NET LENGTH = 53,220 FT. = 10.08 MILE

J.U.L.I.E.
 JOINT UTILITY LOCATION INFORMATION FOR EXCAVATION
 1-800-892-0123
 OR 811

FUNCTIONAL CLASSIFICATION: MAJOR COLLECTOR
 ADT (2043): 1650
 DESIGN SPEED = 50 MPH

3R GUIDELINES

Since 1945
Hutchison Engineering, Inc.
 JACKSONVILLE • PEORIA • SHOREWOOD
 CARBONDALE • MOLINE
 Illinois Professional Design Firm No. 184-000825
 2023 JOB# 4858

BRIAN M. BORGMAN
 062-058271
 REGISTERED PROFESSIONAL ENGINEER
 STATE OF ILLINOIS
 SIGNATURE: *B. Borgman* DATE: 3.2.23
 ENGINEER'S SEAL EXPIRES 11/30/2023

APPROVED	<i>Mark G. [Signature]</i>	2023
MORGAN COUNTY ENGINEER		
PASSED	<i>Mark 14, [Signature]</i>	2023
DISTRICT SIX ENGINEER OF LOCAL ROADS & STREETS		
Released For Bid Based on Limited Review	<i>Mark 14, [Signature]</i>	2023
REGION FOUR ENGINEER STATE OF ILLINOIS DEPARTMENT OF TRANSPORTATION		

GENERAL NOTES

1. THE LOCATION OF UNDERGROUND UTILITIES SHOWN ON THE PLANS REPRESENTS THE BEST KNOWLEDGE OF THE COUNTY AND THE INDICATED ADJUSTMENTS OR RECONSTRUCTION ARE CONSIDERED TO BE REASONABLY ACCURATE. IT SHALL BE THE CONTRACTOR'S RESPONSIBILITY TO VERIFY LOCATIONS OF UNDERGROUND INSTALLATIONS BEFORE STARTING CONSTRUCTION OPERATIONS. THE CONTRACTOR SHALL INDEMNIFY THE COUNTY, ITS OFFICERS, AND EMPLOYEES AGAINST ALL CLAIMS DUE TO DAMAGE TO CORPORATE OR PRIVATE PROPERTY RESULTING FROM HIS CONSTRUCTION OPERATIONS AS DESCRIBED IN ARTICLE 107.20 AND 107.26 OF THE STANDARD SPECIFICATIONS FOR ROAD AND BRIDGE CONSTRUCTION.
2. THE CONTRACTOR MAY BE REQUIRED TO CONDUCT SOME OF HIS GRADING OPERATIONS AROUND TRANSMISSION POLES AND UNDER TRANSMISSION LINES. THE ADDED COST OF DOING SO SHALL BE INCLUDED WITH THE COST OF THE CONTRACT.
3. WHERE SECTION OR SUB-SECTION MONUMENTS ARE ENCOUNTERED, THE ENGINEER SHALL BE NOTIFIED BEFORE SUCH MONUMENTS ARE REMOVED. THE CONTRACTOR SHALL PROTECT AND PRESERVE PROPERTY MARKERS AND MONUMENTS UNTIL THE OWNER, AN AUTHORIZED SURVEYOR OR AGENT HAS WITNESSED OR OTHERWISE REFERENCED THEIR LOCATION.
4. THE CONTRACTOR SHALL NOTIFY THE AGENCIES AND UTILITIES AT LEAST 10 (TEN) DAYS PRIOR TO ANY CONSTRUCTION IN THE AREA AND SHALL COMPLY WITH ALL RESTRICTIONS FOR EQUIPMENT MOVEMENTS AND CLEARANCES AS REGARDS TO THEIR FACILITIES.
5. BEFORE STARTING ANY EXCAVATION, THE CONTRACTOR MUST CALL J.U.L.I.E. AT 1-800-892-0123 or 811 FOR FIELD LOCATIONS OF BURIED ELECTRICAL, TELEPHONE, GAS FACILITIES, AND ALL PUBLIC UTILITIES. A 48 HOUR NOTIFICATION IS REQUIRED.
6. VERIFICATION OF DIMENSIONS : IT IS THE CONTRACTOR'S RESPONSIBILITY TO VERIFY ALL DIMENSIONS AND CONDITIONS EXISTING IN THE FIELD PRIOR TO CONSTRUCTION AND ORDERING MATERIALS.
7. THE CONTRACTOR SHALL BE REQUIRED TO PROVIDE ACCESS TO ABUTTING PROPERTY OWNERS AT ALL TIMES DURING CONSTRUCTION OF THE PROJECT.
8. DURING CONSTRUCTION OPERATIONS, IF ANY LOOSE MATERIAL IS DEPOSITED IN THE FLOW LINE OF DITCHES, GUTTERS OR DRAINAGE STRUCTURES SO THAT THE NATURAL FLOW OF WATER IS OBSTRUCTED, IT SHALL BE REMOVED AT THE CLOSE OF EACH WORKING DAY. AT THE CONCLUSION OF CONSTRUCTION OPERATIONS, ALL DRAINAGE STRUCTURES SO AFFECTED SHALL BE FREE FROM ALL DEBRIS. THIS WORK SHALL BE INCLUDED WITH THE COST OF THE CONTRACT.
9. TRAFFIC SIGNS REMOVED MUST BE RESET AT THEIR PERMANENT LOCATIONS IN A WORKMANLIKE MANNER AND VISIBLE TO TRAFFIC ON THE ROADWAY AS DIRECTED BY THE ENGINEER. THESE SIGNS SHALL BE RESET BEFORE THE ROADWAY IS OPEN TO TRAFFIC. COST OF SUCH WORK SHALL BE INCLUDED WITH THE COST OF THE CONTRACT.
10. ANY AREAS DISTURBED BY CONSTRUCTION ACTIVITIES SHALL BE FERTILIZED, MULCHED, AND SEEDDED IN ACCORDANCE WITH SECTIONS 250 AND 251 OF THE STANDARD SPECIFICATIONS. THIS WORK SHALL NOT BE PAID FOR SEPARATELY.
11. ALL PROPOSED PAVEMENT WIDTHS ARE MEASURED EDGE TO EDGE OF PAVEMENT UNLESS OTHERWISE SHOWN ON THE PLANS.
12. ANY REFERENCE TO STANDARDS THROUGHOUT THE PLANS SHALL BE INTERPRETED TO REFER TO THE LATEST STANDARDS OF THE ILLINOIS DEPARTMENT OF TRANSPORTATION AS SHOWN ON THE TABULATION OF REQUIRED STANDARDS SHOWN IN THE PLANS.
13. ALL EXISTING PRIVATELY OWNED UTILITIES REQUIRING ADJUSTMENT WILL BE MADE BY THE UTILITY COMPANY INVOLVED. WHERE NO PROVISIONS HAVE BEEN MADE FOR ADJUSTMENTS ON THE PLANS, NO ADDITIONAL COMPENSATION WILL BE ALLOWED DUE TO DELAYS OR INCONVENIENCES CAUSED BY THE UTILITY ADJUSTMENTS.
14. IT IS THE RESPONSIBILITY OF THE CONTRACTOR TO MAKE A RECORD OF THE EXISTING PAVEMENT MARKING PRIOR TO THE START OF THE PAVING OPERATION SO THAT THE PAVEMENT MARKING CAN BE REPLICATED AFTER PAVING OPERATIONS ARE COMPLETE. THE COST OF SUCH WORK SHALL BE INCLUDED IN THE COST OF THE PAVEMENT MARKING.

THE FOLLOWING RATES OF APPLICATION HAVE BEEN ASSUMED IN CALCULATING PLAN QUANTITIES :

TYPE B AGGREGATE _____	2.05 TON/CUBIC YARD
BITUMINOUS MATERIALS (TACK COAT) (ON MILLED OR EX SURFACE) _____	0.05 POUND/SQUARE FOOT
BITUMINOUS MATERIALS (TACK COAT) (BETWEEN LIFTS) _____	0.025 POUND/SQUARE FOOT
HOT-MIX ASPHALT _____	0.056 TON/SQUARE YARD/INCH

MIXTURE REQUIREMENTS


THE FOLLOWING MIXTURE REQUIREMENTS ARE APPLICABLE FOR THIS PROJECT:

LOCATION(S):	CH 123	CH 123	ENTRANCES	SIDEROADS
MIXTURE USE(S):	SURFACE	BINDER	INCIDENTAL	
AC/PG:	PG 64-22	PG 64-22	PG 64-22	
DESIGN AIR VOIDS	4% @ Ndes=50	4% @ Ndes=50	4% @ Ndes=50	
MIXTURE COMP (GRADATION)	IL-9.5FG	IL-9.5FG	IL-9.5FG	
FRICTION				
AGGREGATE	MIX "C"	N/A	MIX "C"	
MIXTURE WEIGHT	112	112	112	
QUALITY MANAGEMENT PROGRAM	QC/QA	QC/QA	QC/QA	
SUBLOT SIZE	N/A	N/A	N/A	
MATERIAL TRANSFER DEVICE (REQUIRED?)	N/A	N/A	N/A	

STANDARDS

000001-08	STANDARD SYMBOLS, ABBREVIATIONS AND PATTERNS
001006	DECIMAL OF AN INCH AND OF A FOOT
280001-07	TEMPORARY EROSION CONTROL SYSTEMS
406201-01	MAILBOX TURNOUT
701006-05	OFF-RD OPERATIONS, 2L, 2W, 15' TO 24" FROM PAVEMENT EDGE
701201-05	LANE CLOSURE, 2L, 2W, DAY ONLY, FOR SPEEDS > 45 MPH
701301-04	LANE CLOSURE, 2L, 2W, SHORT TIME OPERATIONS
701306-04	LANE CLOSURE, 2L, 2W, SLOW MOVING OPERATIONS DAY ONLY
701311-03	LANE CLOSURE, 2L, 2W, MOVING OPERATIONS-DAY ONLY
701901-08	TRAFFIC CONTROL DEVICES
780001-05	TYPICAL PAVEMENT MARKINGS

MODEL: H:\MODELS\MHMF5
 FILE: MHMF5_V19281 - CH 123 Resurfacing - Morgan\KCADDD\CADD - Sheets\4855-0001.dgn
 2023

 Hutchison Engineering, Inc. JACKSONVILLE • PEORIA • SHOREWOOD CARBONDALE • MOLINE Illinois Professional Design Firm No. 184-000825	USER NAME = CBurke DESIGNED - CMB DRAWN - CMB PLOT SCALE = 100.0000 ' / In. PLOT DATE = 3/7/2023	REVISIONS REVISIONS REVISIONS REVISIONS
	CHECKED - BMB DATE - 1/2023	REVISIONS REVISIONS REVISIONS REVISIONS
	DATE - 1/2023	REVISIONS REVISIONS REVISIONS REVISIONS
	DATE - 1/2023	REVISIONS REVISIONS REVISIONS REVISIONS

**STATE OF ILLINOIS
DEPARTMENT OF TRANSPORTATION**

COUNTY HIGHWAY 123 RESURFACING GENERAL NOTES AND HIGHWAY STANDARDS		F.A.S. RTE.	SECTION	COUNTY	TOTAL SHEETS	SHEET NO.
		614	19-00109-00-R5	MORGAN	31	2
SCALE: N/A		SHEET 1 OF 1 SHEETS		CONTRACT NO. 93805		
		ILLINOIS		FED. AID PROJECT		

CODE NO.	ITEM	UNIT	TOTAL QUANTITY	MORGAN	
				ROADWAY	RURAL
# 78001180	PAINT PAVEMENT MARKING - LINE 24"	FOOT	182	182	
78300200	RAISED REFLECTIVE PAVEMENT MARKER REMOVAL	EACH	698	698	
* X4401198	HOT-MIX ASPHALT SURFACE REMOVAL, VARIABLE DEPTH	SQ YD	4652	4652	
Δ Z0076600	TRAINEES	Hour	1500		
* X7010216	TRAFFIC CONTROL AND PROTECTION, (SPECIAL)	L SUM	1	1	
Δ Z0076604	TRAINEES TRAINING PROGRAM GRADUATE	Hour	1500		
* Z0013798	CONSTRUCTION LAYOUT	L SUM	1	1	

* SEE SPECIAL PROVISIONS

SPECIALTY ITEMS

Δ 0042

MODEL: C:\USERS\ADMIN\Hatchison\Projects\19-00109-00-RS\19-00109-00-RS-00.dwg
 FILE NAME: 19-00109-00-RS-00.dwg
 2023

Since 1945
Hutchison Engineering, Inc.
 JACKSONVILLE • PEORIA • SHELBYVILLE
 CARBONDALE • MCLINE
 Illinois Professional Design Firm No. 184-000425
 JOB # 4858

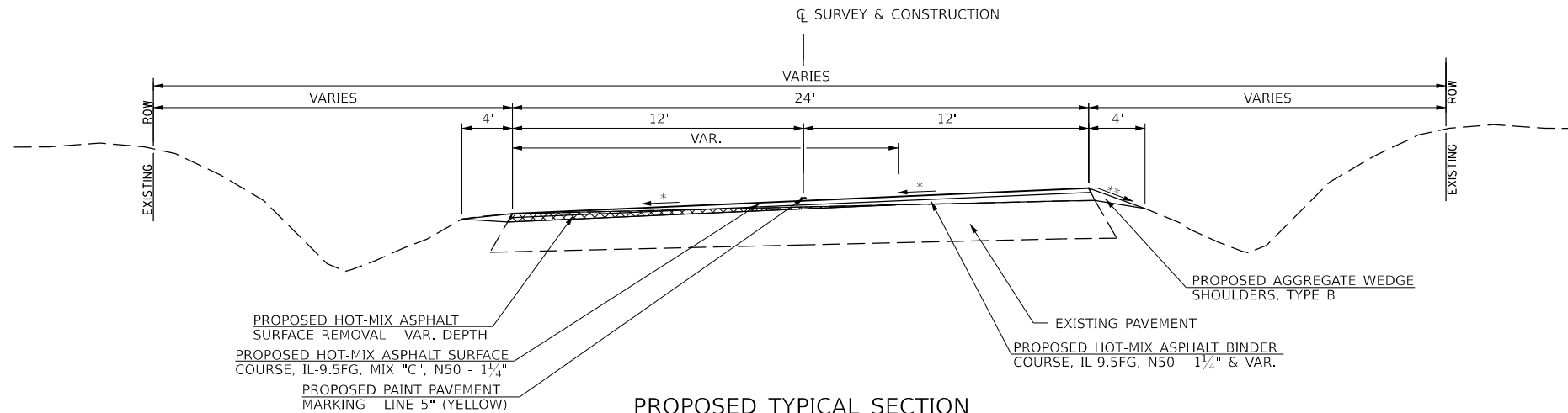
USER NAME = CBurke	DESIGNED - CMB	REVISED -
PLOT SCALE = 100,0000' / 1 in.	DRAWN - CMB	REVISED -
PLOT DATE = 3/7/2023	CHECKED - BMB	REVISED -
	DATE - 1/2023	REVISED -

DESIGNED - CMB	REVISED -
DRAWN - CMB	REVISED -
CHECKED - BMB	REVISED -
DATE - 1/2023	REVISED -

STATE OF ILLINOIS
 DEPARTMENT OF TRANSPORTATION

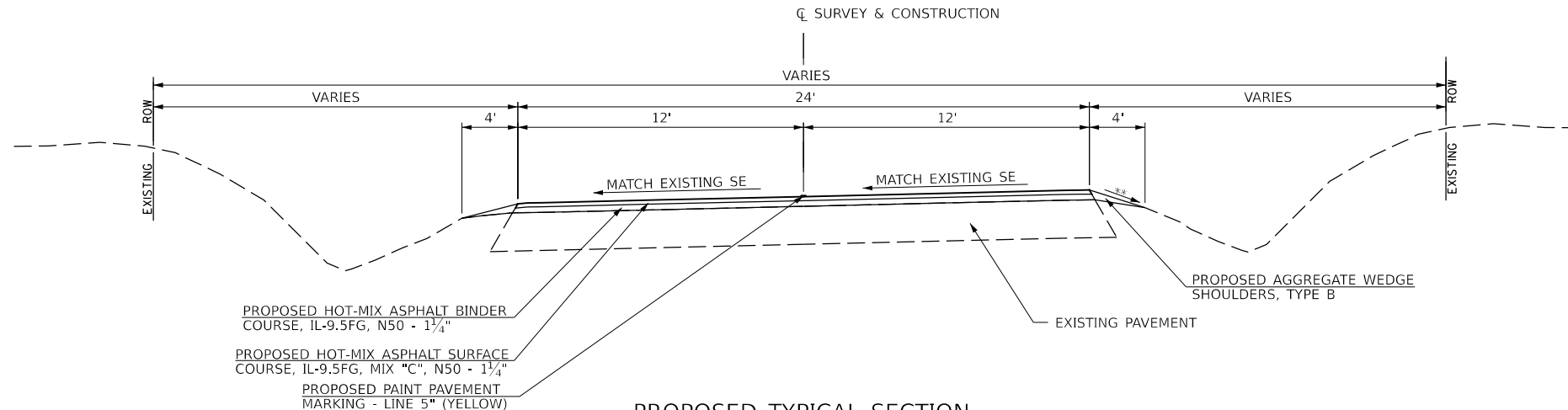
COUNTY HIGHWAY 123 RESURFACING
 SUMMARY OF QUANTITIES
 SCALE: N/A SHEET 2 OF 2 SHEETS

F.A.S. RTE.	SECTION	COUNTY	TOTAL SHEETS	SHEET NO.
614	19-00109-00-RS	MORGAN	31	4
ILLINOIS FED. AID PROJECT			CONTRACT NO. 93805	



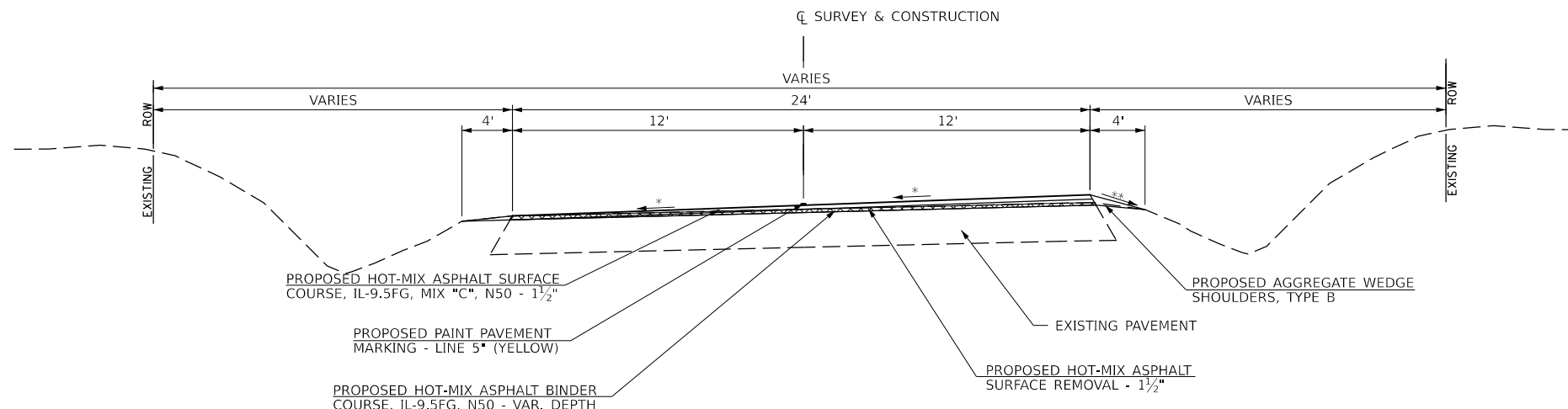
**PROPOSED TYPICAL SECTION
CH 123 - SUPERELEVATED RESURFACING**

STATION 309+44 TO 319+49
STATION 325+44 TO 335+43
STATION 438+00 TO 447+82



**PROPOSED TYPICAL SECTION
CH 123 - SUPERELEVATED RESURFACING**

STATION 423+86 TO 433+71



**PROPOSED TYPICAL SECTION
CH 123 - SUPERELEVATED MILLING AND RESURFACING**

STATION 591+35 TO 600+88

* SEE ROADWAY PLAN AND DETAIL
** MAXIMUM ROLLOVER - 12%

MODEL: I:\MODELS\MAMES FILE: 19-00109-00-RS - CH 123 Resurfacing (Morgan)\CADD\CADD Sheets\4858-Typical.dwg

Since 1945
Hutchison Engineering, Inc.
JACKSONVILLE • PEORIA • SHOREWOOD
CARBONDALE • MOULNE
Illinois Professional Design Firm No. 184-000825

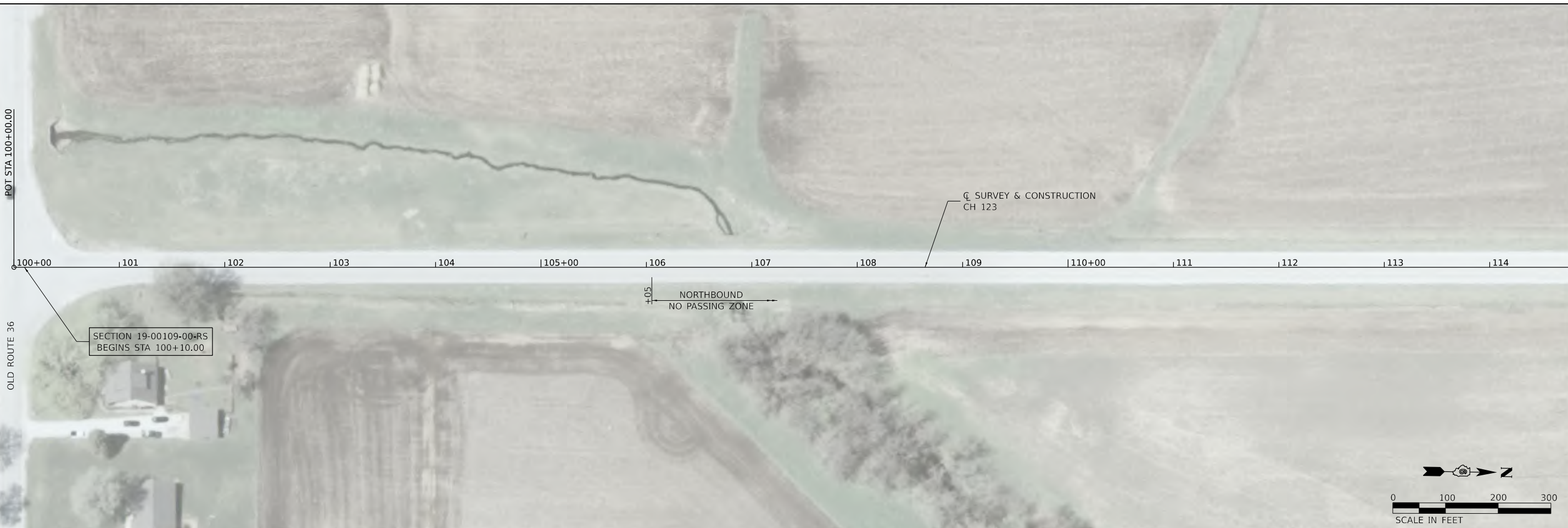
USER NAME = CBurke	DESIGNED - CMB	REVISED -
	DRAWN - CMB	REVISED -
PLOT SCALE = 10,0000' / 1"	CHECKED - BMB	REVISED -
PLOT DATE = 2/28/2023	DATE - 1/2023	REVISED -

**STATE OF ILLINOIS
DEPARTMENT OF TRANSPORTATION**

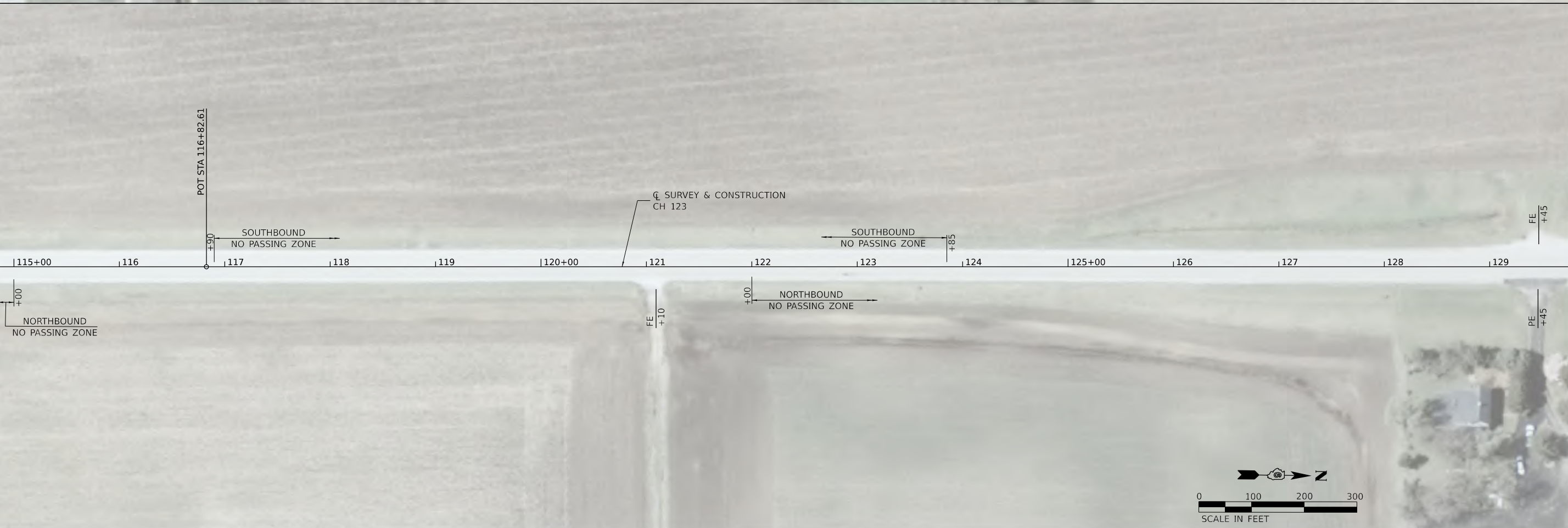
**COUNTY HIGHWAY 123 RESURFACING
TYPICAL SECTIONS**

SCALE: N/A SHEET 2 OF 2 SHEETS

F.A.S. RTE.	SECTION	COUNTY	TOTAL SHEETS	SHEET NO.
614	19-00109-00-RS	MORGAN	31	6
CONTRACT NO. 93805				
ILLINOIS FED. AID PROJECT				



MATCHLINE - STA 114+80



MATCHLINE - STA 114+80

MATCHLINE - STA 129+80

MODEL: 4100ELNAMES
FILE NAME: V:\4858 - CH 123 Resurfacing (Morgan)\CADD\CADD Sheets\4858-shc-hr.dgn

Since 1945
Hutchison Engineering, Inc.
JACKSONVILLE • PEORIA • SHOREWOOD
CARBONDALE • MOCLINE
Illinois Professional Design Firm No. 184-000825

USER NAME =	CBurke	DESIGNED -	CMB	REVISED -	
DRAWN -	JCW	REVISOR -		REVISOR -	
PLOT SCALE =	0.1667" / in.	CHECKED -	BMB	REVISOR -	
PLOT DATE =	2/28/2023	DATE -	1/2023	REVISOR -	

**STATE OF ILLINOIS
DEPARTMENT OF TRANSPORTATION**

**COUNTY HIGHWAY 123 RESURFACING
DOUBLE ROADWAY PLAN**

SCALE: 1"=100' SHEET 1 OF 19 SHEETS STA. 100+10.00 TO STA. 129+80.00

F.A.S. RTE.	SECTION	COUNTY	TOTAL SHEETS	SHEET NO.
614	19-00109-00-RS	MORGAN	31	10
CONTRACT NO. 93805				
ILLINOIS FED. AID PROJECT				

MATCHLINE - STA 129+80

MATCHLINE - STA 144+80



MATCHLINE - STA 144+80

MATCHLINE - STA 159+80



MODEL: 4100ELMAMES
FILE NAME: V:\4858 - CH 123 Resurfacing (Morgan)\CADD\CADD Sheets\4858-shc-hr.dgn
2023

Since 1945
Hutchison Engineering, Inc.
JACKSONVILLE • PEORIA • SHOREWOOD
CARBONDALE • MOBILE
Illinois Professional Design Firm No. 184-000825
JOB# 4858

USER NAME =	CBurke	DESIGNED -	CMB	REVISED -	
DRAWN -	JCW	REVISIED -			
PLOT SCALE =	0.16666633' / in.	CHECKED -	BMB	REVISED -	
PLOT DATE =	2/28/2023	DATE -	1/2023	REVISED -	

**STATE OF ILLINOIS
DEPARTMENT OF TRANSPORTATION**

**COUNTY HIGHWAY 123 RESURFACING
DOUBLE ROADWAY PLAN**

SCALE: 1"=100' SHEET 2 OF 19 SHEETS STA. 129+80.00 TO STA. 159+80.00

F.A.S. RTE.	SECTION	COUNTY	TOTAL SHEETS	SHEET NO.
614	19-00109-00-R5	MORGAN	31	11
CONTRACT NO. 93805				
ILLINOIS FED. AID PROJECT				

MATCHLINE - STA 159+80

MATCHLINE - STA 174+80



MATCHLINE - STA 174+80

MATCHLINE - STA 189+80



MODEL: 41002L\MAMES
FILE NAME: V:\4858 - CH 123 Resurfacing (Morgan)\CADD\CADD Sheets\4858-shc3r.dgn

Hutchinson Engineering, Inc.
Since 1945
JACKSONVILLE • PEORIA • SHOREWOOD
CARBONDALE • MCLEINE
Illinois Professional Design Firm No. 184-000825

USER NAME =	CBurke	DESIGNED -	CMB	REVISED -	
		DRAWN -	JCW	REVISED -	
PLOT SCALE =	0.16666633' / in.	CHECKED -	BMB	REVISED -	
PLOT DATE =	2/28/2023	DATE -	1/2023	REVISED -	

**STATE OF ILLINOIS
DEPARTMENT OF TRANSPORTATION**

**COUNTY HIGHWAY 123 RESURFACING
DOUBLE ROADWAY PLAN**

SCALE: 1"=100' SHEET 3 OF 19 SHEETS STA. 159+80.00 TO STA. 189+80.00

F.A.S. RTE.	SECTION	COUNTY	TOTAL SHEETS	SHEET NO.
614	19-00109-00-RS	MORGAN	31	12
CONTRACT NO. 93805				
ILLINOIS FED. AID PROJECT				

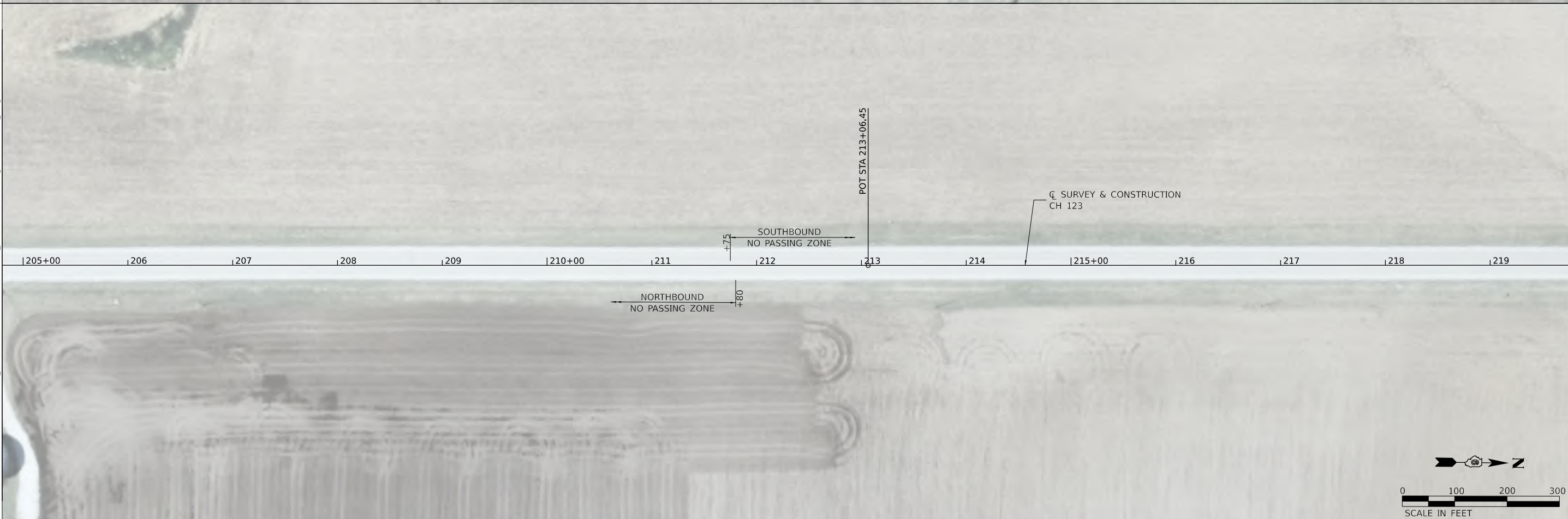
MATCHLINE - STA 189+80

MATCHLINE - STA 204+80



MATCHLINE - STA 204+80

MATCHLINE - STA 219+80



MODEL: 4100\ELNAMES
FILE NAME: V:\4858 - CH 123 Resurfacing (Morgan)\CADD\CADD Sheets\4858-shc-hr.dgn

Hutchison Engineering, Inc.
Since 1945
JACKSONVILLE • PEORIA • SHOREWOOD
CARBONDALE • MCLELLAN
Illinois Professional Design Firm No. 184-000825

USER NAME = CBurke	DESIGNED - CMB	REVISED -
	DRAWN - JCW	REVISED -
PLOT SCALE = 0.16666633''/in.	CHECKED - BMB	REVISED -
PLOT DATE = 2/28/2023	DATE - 1/2023	REVISED -

**STATE OF ILLINOIS
DEPARTMENT OF TRANSPORTATION**

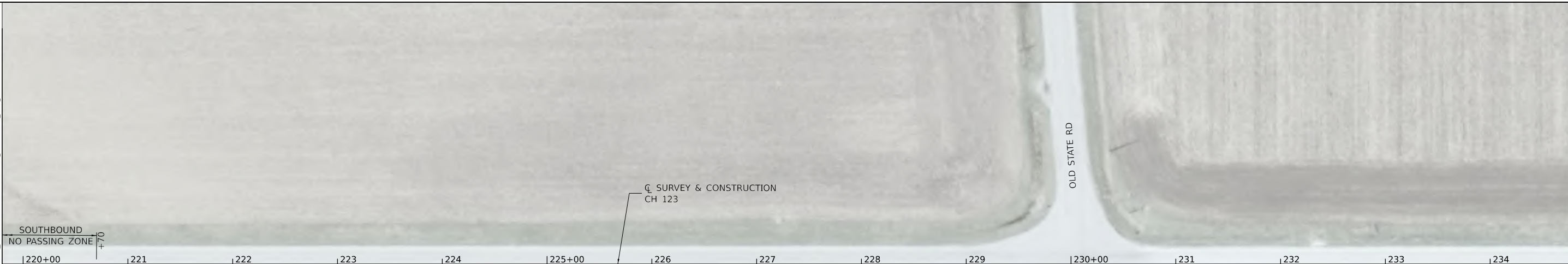
**COUNTY HIGHWAY 123 RESURFACING
DOUBLE ROADWAY PLAN**

SCALE: 1"=100' SHEET 4 OF 19 SHEETS STA. 189+80.00 TO STA. 219+80.00

F.A.S. RTE.	SECTION	COUNTY	TOTAL SHEETS	SHEET NO.
614	19-00109-00-RS	MORGAN	31	13
CONTRACT NO. 93805				
ILLINOIS FED. AID PROJECT				

MATCHLINE - STA 219+80

MATCHLINE - STA 234+80



MATCHLINE - STA 234+80

MATCHLINE - STA 249+80



MODEL: 4100ELMAMES
FILE NAME: V:\4858 - CH 123 Resurfacing (Morgan)\CADD\CADD Sheets\4858-std-1r.dgn

Hutchinson Engineering, Inc.
 Since 1945
 JACKSONVILLE • PEORIA • SHOREWOOD
 CARBONDALE • MCLINE
 Illinois Professional Design Firm No. 184-000825

USER NAME = CBurke	DESIGNED - CMB	REVISED -
	DRAWN - JCW	REVISED -
PLOT SCALE = 0.16666633' / in.	CHECKED - BMB	REVISED -
PLOT DATE = 2/28/2023	DATE - 1/2023	REVISED -

**STATE OF ILLINOIS
DEPARTMENT OF TRANSPORTATION**

**COUNTY HIGHWAY 123 RESURFACING
DOUBLE ROADWAY PLAN**

SCALE: 1"=100' SHEET 5 OF 19 SHEETS STA. 219+80.00 TO STA. 249+80.00

F.A.S. RTE.	SECTION	COUNTY	TOTAL SHEETS	SHEET NO.
614	19-00109-00-RS	MORGAN	31	14
CONTRACT NO. 93805				
ILLINOIS FED. AID PROJECT				

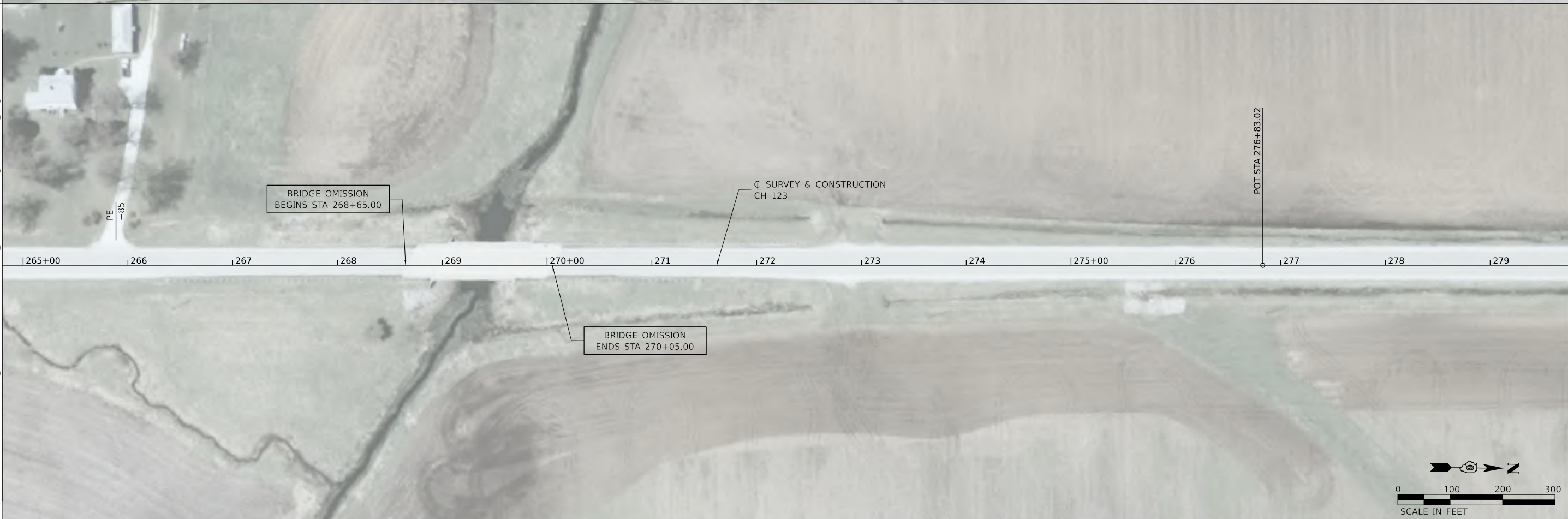
MATCHLINE - STA 249+80

MATCHLINE - STA 264+80



MATCHLINE - STA 264+80

MATCHLINE - STA 279+80



MODEL: 41002L\MAMES
FILE NAME: V:\4858 - CH 123 Resurfacing (Morgan)\CADD\CADD Sheets\4858-shc-hr.dgn

Since 1945
Hutchison Engineering, Inc.
JACKSONVILLE • PEORIA • SHOREWOOD
CARBONDALE • MOLINE
Illinois Professional Design Firm No. 194-000825

USER NAME =	CBurke	DESIGNED -	CMB	REVISED -	
DRAWN -	JCW	REVISIED -			
PLOT SCALE =	0.16666633' / in.	CHECKED -	BMB	REVISED -	
PLOT DATE =	2/28/2023	DATE -	1/2023	REVISED -	

**STATE OF ILLINOIS
DEPARTMENT OF TRANSPORTATION**

**COUNTY HIGHWAY 123 RESURFACING
DOUBLE ROADWAY PLAN**

SCALE: 1"=100' SHEET 6 OF 19 SHEETS STA. 249+80.00 TO STA. 279+80.00

F.A.S. RTE.	SECTION	COUNTY	TOTAL SHEETS	SHEET NO.
614	19-00109-00-RS	MORGAN	31	15
CONTRACT NO. 93805				
ILLINOIS FED. AID PROJECT				

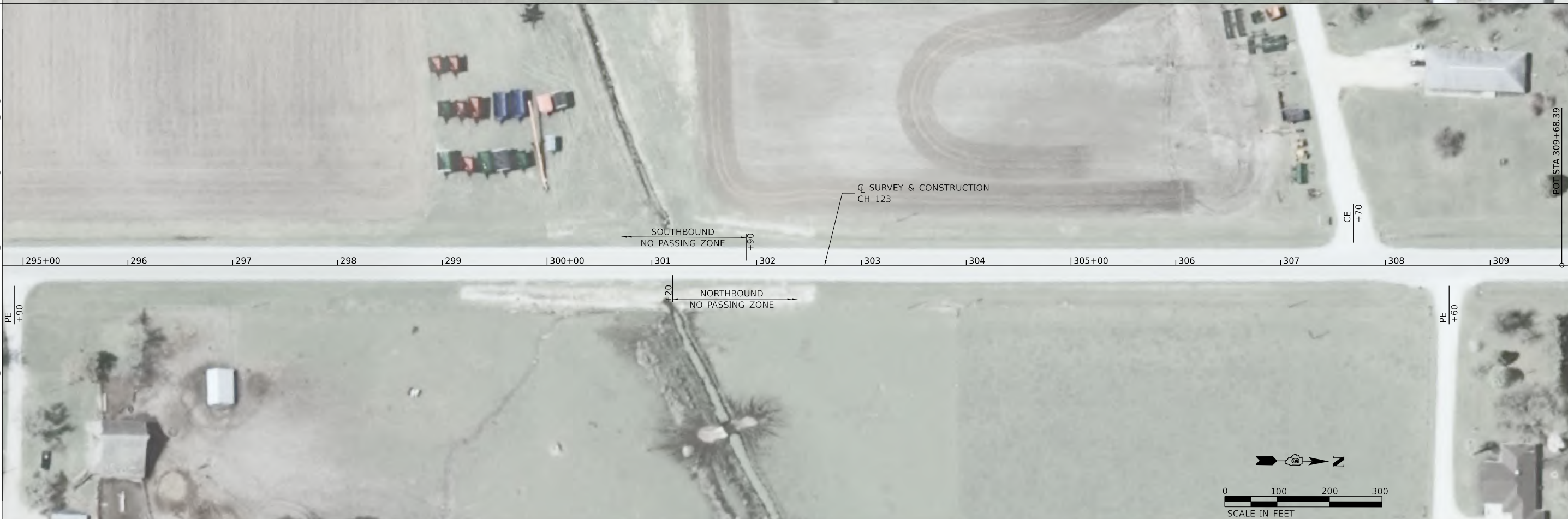
MATCHLINE - STA 279+80

MATCHLINE - STA 294+80



MATCHLINE - STA 294+80

MATCHLINE - STA 309+80



MODEL: 4100ELMAMES
FILE NAME: V:\4858 - CH 123 Resurfacing (Morgan)\CADD\CADD Sheets\4858-shc-hr.dgn
2023

Hutchison Engineering, Inc.
Since 1945
JACKSONVILLE • PEORIA • SHOREWOOD
CARBONDALE • MOBILE
Illinois Professional Design Firm No. 184-000825
JOB # 4858

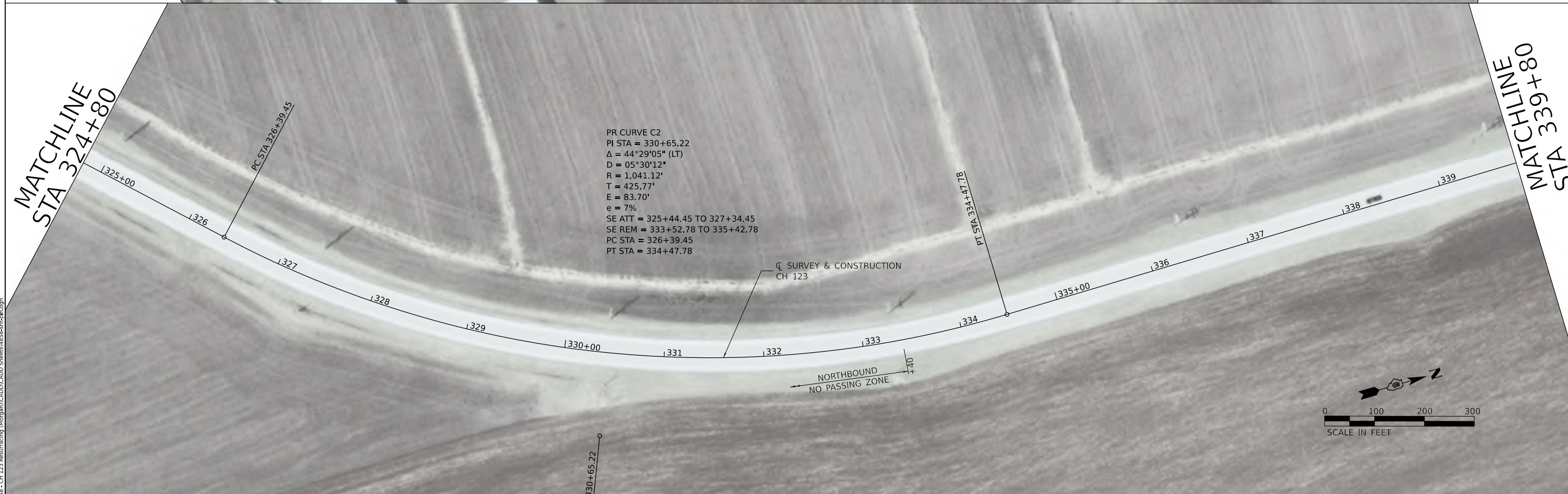
USER NAME =	CBurke	DESIGNED -	CMB	REVISED -	
DRAWN -	JCW	REVISED -			
PLOT SCALE =	0.16666633' / in.	CHECKED -	BMB	REVISED -	
PLOT DATE =	2/28/2023	DATE -	1/2023	REVISED -	

**STATE OF ILLINOIS
DEPARTMENT OF TRANSPORTATION**

**COUNTY HIGHWAY 123 RESURFACING
DOUBLE ROADWAY PLAN**

SCALE: 1"=100' SHEET 7 OF 19 SHEETS STA. 279+80.00 TO STA. 309+80.00

F.A.S. RTE.	SECTION	COUNTY	TOTAL SHEETS	SHEET NO.
614	19-00109-00-R5	MORGAN	31	16
CONTRACT NO. 93805				
ILLINOIS FED. AID PROJECT				



MODEL: 4100ELNAMES
 FILE NAME: V:\4855 - CH 123 Resurfacing (Morgan)\CADD\CADD Sheets\4855-shc1r.dwg
 2023

Since 1945
Hutchison Engineering, Inc.
 JACKSONVILLE • PEORIA • SHOREWOOD
 CARBONDALE • MOLINE
 Illinois Professional Design Firm No. 184-000825

USER NAME = CBurke
 PLOT SCALE = 0.16666633' / in.
 PLOT DATE = 2/28/2023

DESIGNED - CMB
 DRAWN - JCW
 CHECKED - BMB
 DATE - 1/2023

REVISED -
 REVISED -
 REVISED -
 REVISED -

**STATE OF ILLINOIS
 DEPARTMENT OF TRANSPORTATION**

**COUNTY HIGHWAY 123 RESURFACING
 DOUBLE ROADWAY PLAN**

SCALE: 1"=100' SHEET 8 OF 19 SHEETS STA. 309+80.00 TO STA. 339+80.00

F.A.S. RTE.	SECTION	COUNTY	TOTAL SHEETS	SHEET NO.
614	19-00109-00-R5	MORGAN	31	17
CONTRACT NO. 93805				
ILLINOIS FED. AID PROJECT				

MATCHLINE - STA 339+80

MATCHLINE - STA 354+80



MATCHLINE - STA 354+80

MATCHLINE - STA 369+80



MODEL: 4100ELMAMES
FILE NAME: V:\4858 - Ch 123 Resurfacing (Morgan)\CADD\CADD Sheets\4858-shc-hr.dgn

Since 1945
Hutchison Engineering, Inc.
JACKSONVILLE • PEORIA • SHOREWOOD
CARBONDALE • MOULNIE
Illinois Professional Design Firm No. 184-000825

USER NAME =	CBurke	DESIGNED -	CMB	REVISED -	
DRAWN -	JCW	REVISIED -		REVISIED -	
PLOT SCALE =	0.16666633''/in.	CHECKED -	BMB	REVISIED -	
PLOT DATE =	2/28/2023	DATE -	1/2023	REVISIED -	

**STATE OF ILLINOIS
DEPARTMENT OF TRANSPORTATION**

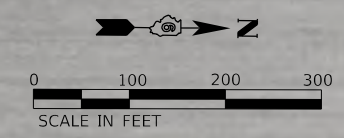
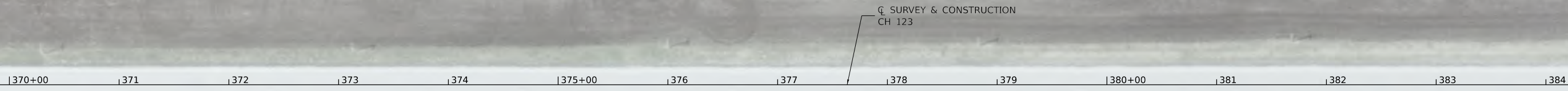
**COUNTY HIGHWAY 123 RESURFACING
DOUBLE ROADWAY PLAN**

SCALE: 1"=100' SHEET 9 OF 19 SHEETS STA. 339+80.00 TO STA. 369+80.00

F.A.S. RTE.	SECTION	COUNTY	TOTAL SHEETS	SHEET NO.
614	19-00109-00-R5	MORGAN	31	18
CONTRACT NO. 93805				
ILLINOIS FED. AID PROJECT				

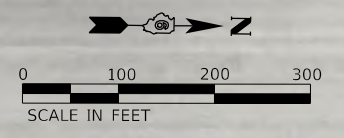
MATCHLINE - STA 369+80

MATCHLINE - STA 384+80



MATCHLINE - STA 384+80

MATCHLINE - STA 399+80



MODEL: 410001.DWG
FILE NAME: V:\4858 - CH 123 Resurfacing (Morgan)\CADD\CADD Sheets\4858-shc-hr.dwg

Since 1945
Hutchison Engineering, Inc.
JACKSONVILLE • PEORIA • SHOREWOOD
CARBONDALE • MOBILE
Illinois Professional Design Firm No. 184-000825

USER NAME = CBurke	DESIGNED - CMB	REVISED -
	DRAWN - JCW	REVISED -
PLOT SCALE = 0.16666633' / in.	CHECKED - BMB	REVISED -
PLOT DATE = 2/28/2023	DATE - 1/2023	REVISED -

**STATE OF ILLINOIS
DEPARTMENT OF TRANSPORTATION**

**COUNTY HIGHWAY 123 RESURFACING
DOUBLE ROADWAY PLAN**

SCALE: 1"=100' SHEET 10 OF 19 SHEETS STA. 369+80.00 TO STA. 399+80.00

F.A.S. RTE.	SECTION	COUNTY	TOTAL SHEETS	SHEET NO.
614	19-00109-00-R5	MORGAN	31	19
CONTRACT NO. 93805				
ILLINOIS FED. AID PROJECT				

MATCHLINE - STA 399+80

MATCHLINE - STA 414+80



MATCHLINE - STA 414+80

MATCHLINE - STA 429+80



MODEL: 41001.DWG
 FILE NAME: V:\4855 - CH 123 Resurfacing (Morgan)\CADD\CADD Sheets\4855-shc-hr.dwg

Hutchison Engineering, Inc.
 Since 1945
 JACKSONVILLE • PEORIA • SHOREWOOD
 CARBONDALE • MCLELLINE
 Illinois Professional Design Firm No. 184-000825

USER NAME = CBurke	DESIGNED - CMB	REVISED -
DRAWN - JCW	REVISED -	
PLOT SCALE = 0.16666633' / in.	CHECKED - BMB	REVISED -
PLOT DATE = 2/28/2023	DATE - 1/2023	REVISED -

**STATE OF ILLINOIS
 DEPARTMENT OF TRANSPORTATION**

**COUNTY HIGHWAY 123 RESURFACING
 DOUBLE ROADWAY PLAN**

SCALE: 1"=100' SHEET 11 OF 19 SHEETS STA. 399+80.00 TO STA. 429+80.00

F.A.S. RTE.	SECTION	COUNTY	TOTAL SHEETS	SHEET NO.
614	19-00109-00-R5	MORGAN	31	20
CONTRACT NO. 93805				
ILLINOIS FED. AID PROJECT				



MODEL: 4100ELMAMES
 FILE NAME: V:\4858 - CH 123 Resurfacing (Morgan)\CADD\CADD Sheets\4858-shc-hr.dgn
 2023

Since 1945
Hutchison Engineering, Inc.
 JACKSONVILLE • PEORIA • SHOREWOOD
 CARBONDALE • MCLINE
 Illinois Professional Design Firm No. 184-000825
 JOB # 4858

USER NAME =	CBurke	DESIGNED -	CMB	REVISED -	
DRAWN -	JCW	REVISIED -			
PLOT SCALE =	0.16666633 1/16 in.	CHECKED -	BMB	REVISED -	
PLOT DATE =	2/28/2023	DATE -	1/2023	REVISED -	

STATE OF ILLINOIS
DEPARTMENT OF TRANSPORTATION

COUNTY HIGHWAY 123 RESURFACING
DOUBLE ROADWAY PLAN
 SCALE: 1"=100' SHEET 12 OF 19 SHEETS STA. 429+80.00 TO STA. 459+80.00

F.A.S. RTE.	SECTION	COUNTY	TOTAL SHEETS	SHEET NO.
614	19-00109-00-R5	MORGAN	31	21
CONTRACT NO. 93805				
ILLINOIS FED. AID PROJECT				

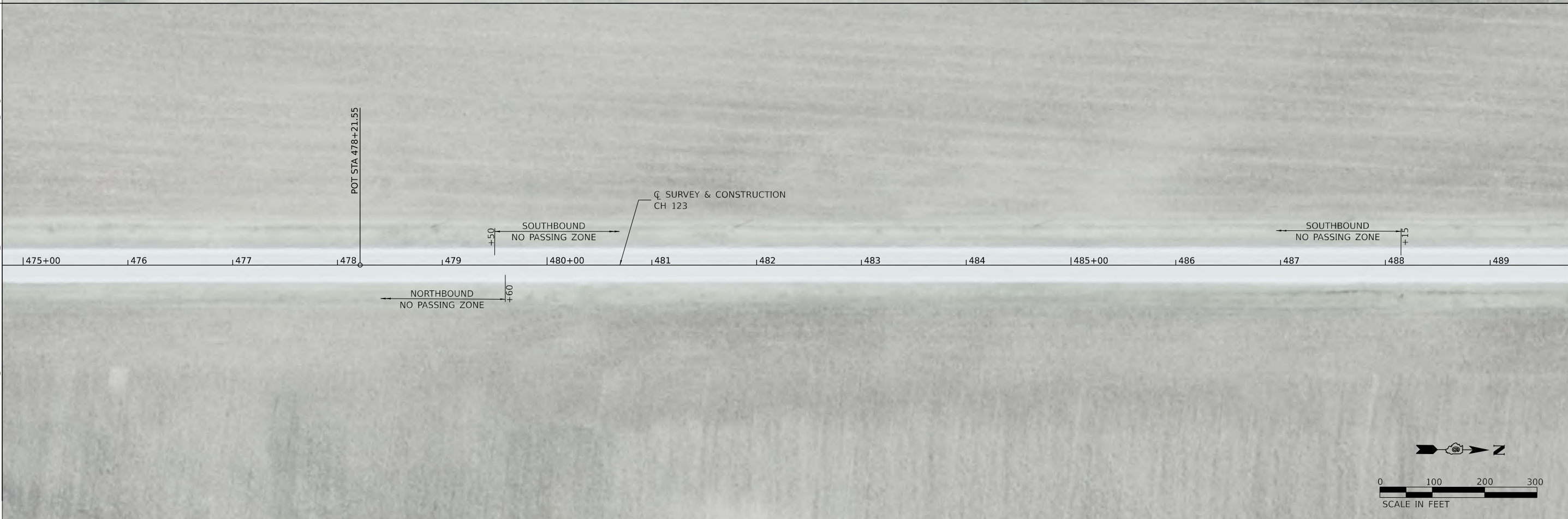
MATCHLINE - STA 459+80

MATCHLINE - STA 474+80



MATCHLINE - STA 474+80

MATCHLINE - STA 489+80



MODEL: 41001\PLANES
FILE NAME: V:\4855 - CH 123 Resurfacing (Morgan)\CADD\CADD Sheets\4855-shc-hr.dgn

Since 1945
Hutchison Engineering, Inc.
JACKSONVILLE • PEORIA • SHOREWOOD
CARBONDALE • MCLINE
Illinois Professional Design Firm No. 184-000825

USER NAME =	CBurke	DESIGNED -	CMB	REVISED -	
DRAWN -	JCW	REVISIED -			
PLOT SCALE =	0.16666633' / in.	CHECKED -	BMB	REVISED -	
PLOT DATE =	2/28/2023	DATE -	1/2023	REVISED -	

**STATE OF ILLINOIS
DEPARTMENT OF TRANSPORTATION**

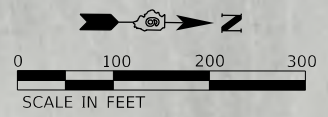
**COUNTY HIGHWAY 123 RESURFACING
DOUBLE ROADWAY PLAN**

SCALE: 1"=100' SHEET 13 OF 19 SHEETS STA. 459+80.00 TO STA. 489+80.00

F.A.S. RTE.	SECTION	COUNTY	TOTAL SHEETS	SHEET NO.
614	19-00109-00-R5	MORGAN	31	22
CONTRACT NO. 93805				
ILLINOIS FED. AID PROJECT				

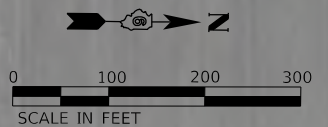
MATCHLINE - STA 489+80

MATCHLINE - STA 504+80



MATCHLINE - STA 504+80

MATCHLINE - STA 519+80



MODEL: 4100ELMAMES
FILE NAME: V:\4855 - CH 123 Resurfacing (Morgan)\CADD\CADD Sheets\4855-shc-hr.dgn

Since 1945
Hutchison Engineering, Inc.
 JACKSONVILLE • PEORIA • SHOREWOOD
 CARBONDALE • MOULDER
 Illinois Professional Design Firm No. 184-000825

USER NAME =	CBurke	DESIGNED -	CMB	REVISED -	
DRAWN -	JCW	REVISIED -			
PLOT SCALE =	0.16666633''/in.	CHECKED -	BMB	REVISED -	
PLOT DATE =	2/28/2023	DATE -	1/2023	REVISED -	

**STATE OF ILLINOIS
DEPARTMENT OF TRANSPORTATION**

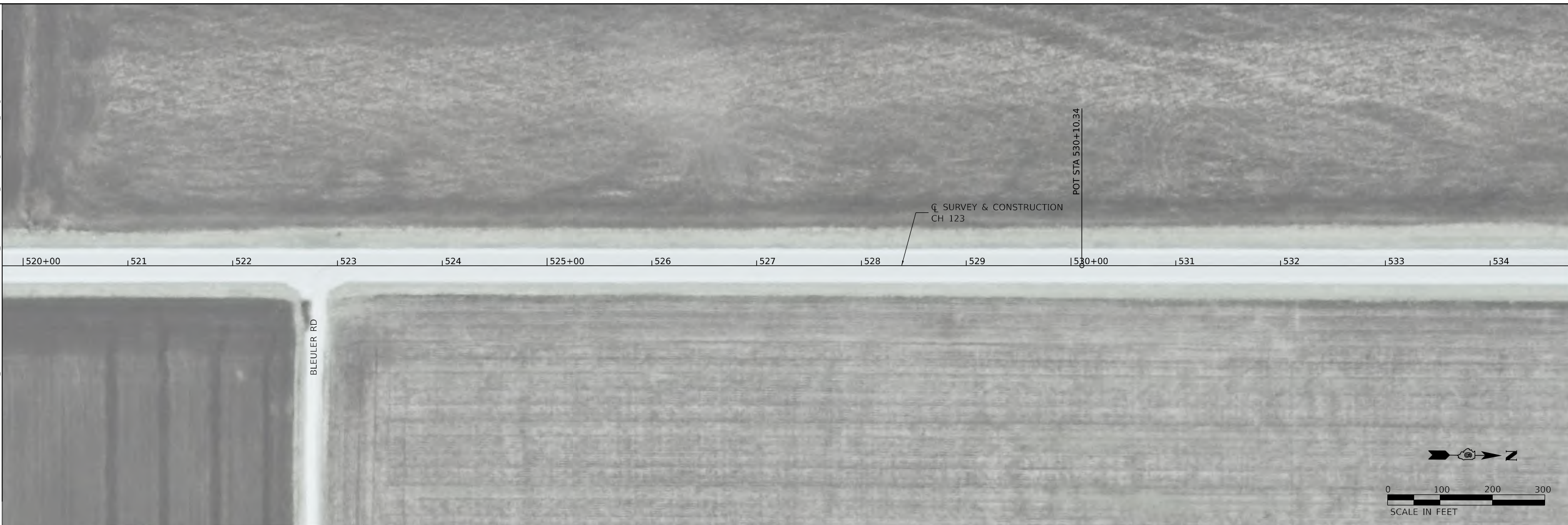
**COUNTY HIGHWAY 123 RESURFACING
DOUBLE ROADWAY PLAN**

SCALE: 1"=100' SHEET 14 OF 19 SHEETS STA. 489+80.00 TO STA. 519+80.00

F.A.S. RTE.	SECTION	COUNTY	TOTAL SHEETS	SHEET NO.
614	19-00109-00-RS	MORGAN	31	23
CONTRACT NO. 93805				
ILLINOIS FED. AID PROJECT				

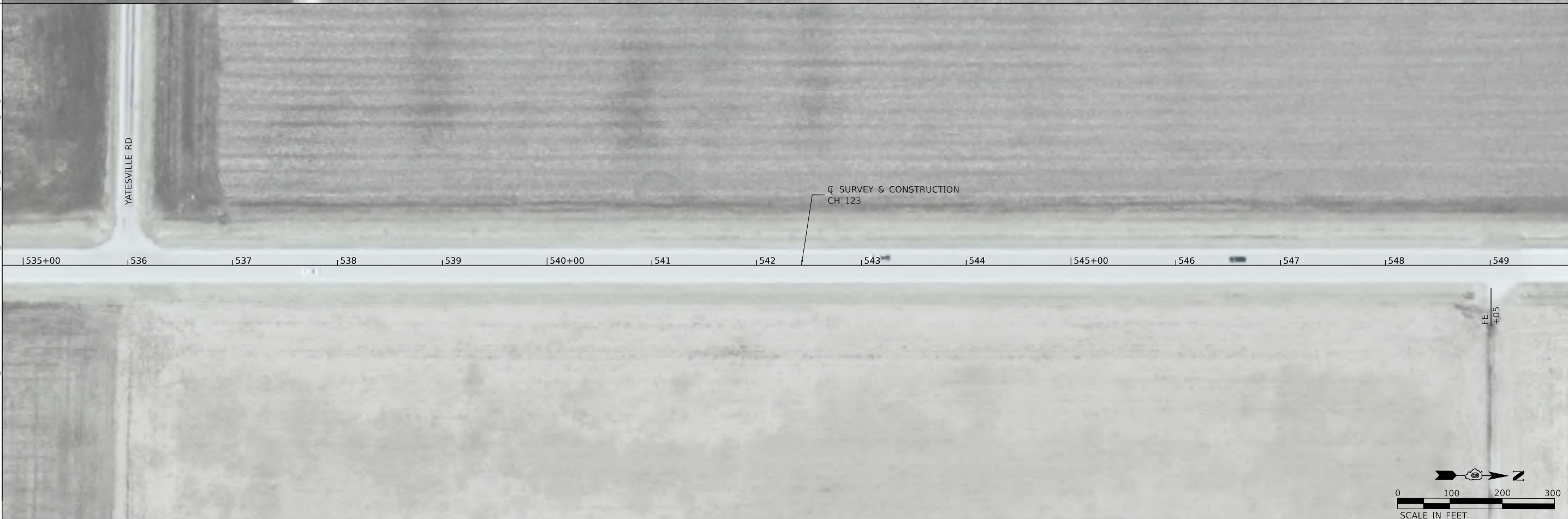
MATCHLINE - STA 519+80

MATCHLINE - STA 534+80



MATCHLINE - STA 534+80

MATCHLINE - STA 549+80



MODEL: 41002\PLANES
FILE NAME: V49555 - CH 123 Resurfacing (Morgan)\CADD\CADD Sheets\4858-shc1p.dgn

Since 1945
Hutchison Engineering, Inc.
JACKSONVILLE • PEORIA • SHOREWOOD
CARBONDALE • MCLINE
Illinois Professional Design Firm No. 184-000825

USER NAME =	CBurke	DESIGNED -	CMB	REVISED -	
DRAWN -	JCW	REVISIED -			
PLOT SCALE =	0.16666633 1/ in.	CHECKED -	BMB	REVISED -	
PLOT DATE =	2/28/2023	DATE -	1/2023	REVISED -	

**STATE OF ILLINOIS
DEPARTMENT OF TRANSPORTATION**

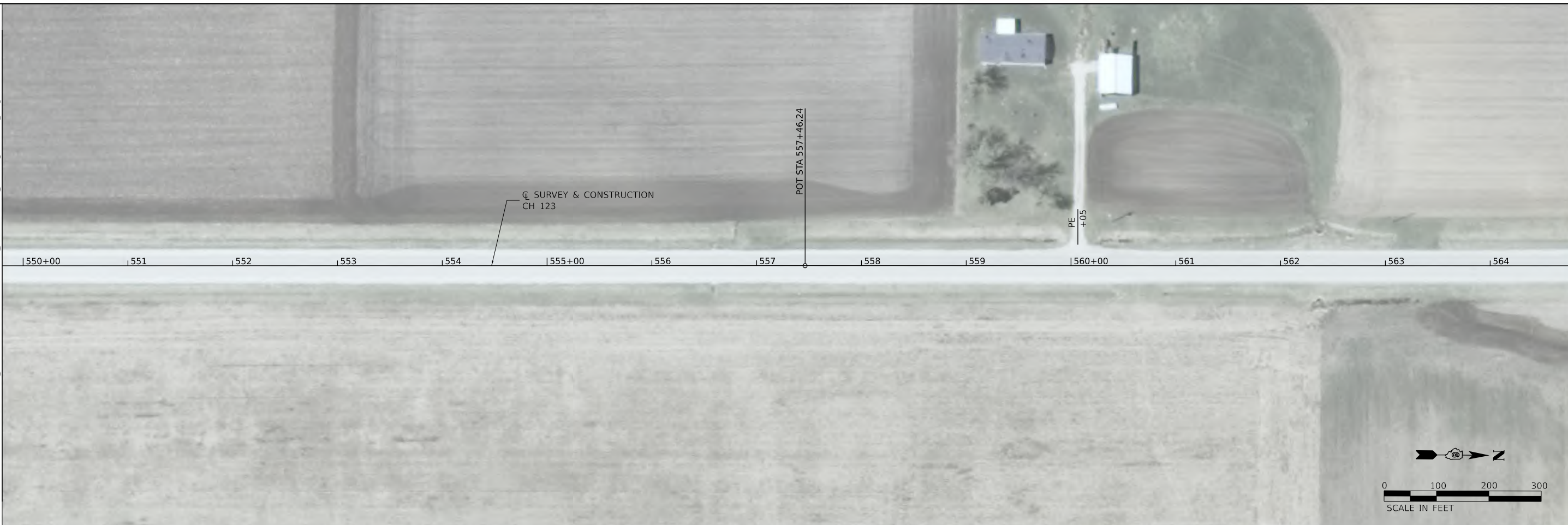
**COUNTY HIGHWAY 123 RESURFACING
DOUBLE ROADWAY PLAN**

SCALE: 1"=100' SHEET 15 OF 19 SHEETS STA. 519+80.00 TO STA. 549+80.00

F.A.S. RTE.	SECTION	COUNTY	TOTAL SHEETS	SHEET NO.
614	19-00109-00-R5	MORGAN	31	24
CONTRACT NO. 93805				
ILLINOIS FED. AID PROJECT				

MATCHLINE - STA 549+80

MATCHLINE - STA 564+80



MATCHLINE - STA 564+80

MATCHLINE - STA 579+80



MODEL: 4100ELMAME
FILE NAME: V:\4858 - CH 123 Resurfacing (Morgan)\CADD\CADD Sheets\4858-shc-hr.dgn

Since 1945
Hutchison Engineering, Inc.
 JACKSONVILLE • PEORIA • SHOREWOOD
 CARBONDALE • MCLINE
 Illinois Professional Design Firm No. 184-000825

USER NAME =	CBurke	DESIGNED -	CMB	REVISED -	
		DRAWN -	JCW	REVISED -	
PLOT SCALE =	0.16666633' / in.	CHECKED -	BMB	REVISED -	
PLOT DATE =	2/28/2023	DATE -	1/2023	REVISED -	

**STATE OF ILLINOIS
DEPARTMENT OF TRANSPORTATION**

**COUNTY HIGHWAY 123 RESURFACING
DOUBLE ROADWAY PLAN**

SCALE: 1"=100' SHEET 16 OF 19 SHEETS STA. 549+80.00 TO STA. 579+80.00

F.A.S. RTE.	SECTION	COUNTY	TOTAL SHEETS	SHEET NO.
614	19-00109-00-RS	MORGAN	31	25
CONTRACT NO. 93805				
ILLINOIS FED. AID PROJECT				

MATCHLINE - STA 579+80



MATCHLINE STA 594+80



PR CURVE C5
 PI STA = 596+29.95
 $\Delta = 41^{\circ}58'38''$ (RT)
 $D = 05^{\circ}30'05''$
 $R = 1,041.50'$
 $T = 399.56'$
 $E = 74.01'$
 $e = 7\%$
 SE ATT = 591+35.40 TO 593+25.40
 SE RUN = 598+98.44 TO 600+88.44
 PC STA = 592+30.40
 PT STA = 599+93.44

MODEL: 4100ELNAMES
 FILE NAME: V:\4855 - CH 123 Resurfacing (Morgan)\CADD\CADD Sheets\4855-htc-hr.dgn
 2023

MATCHLINE STA 594+80

MATCHLINE - STA 609+80

Hutchison Engineering, Inc.
 Since 1945
 JACKSONVILLE • PEORIA • SHOREWOOD
 CARBONDALE • MCLINE
 Illinois Professional Design Firm No. 184-000825
 JOB # 4858

USER NAME = CBurke	DESIGNED - CMB	REVISED -
DRAWN - JCW	REVISED -	
PLOT SCALE = 0.16666633''/in.	CHECKED - BMB	REVISED -
PLOT DATE = 2/28/2023	DATE - 1/2023	REVISED -

**STATE OF ILLINOIS
 DEPARTMENT OF TRANSPORTATION**

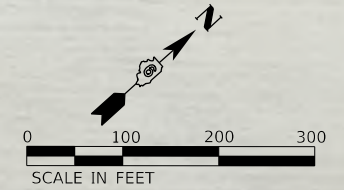
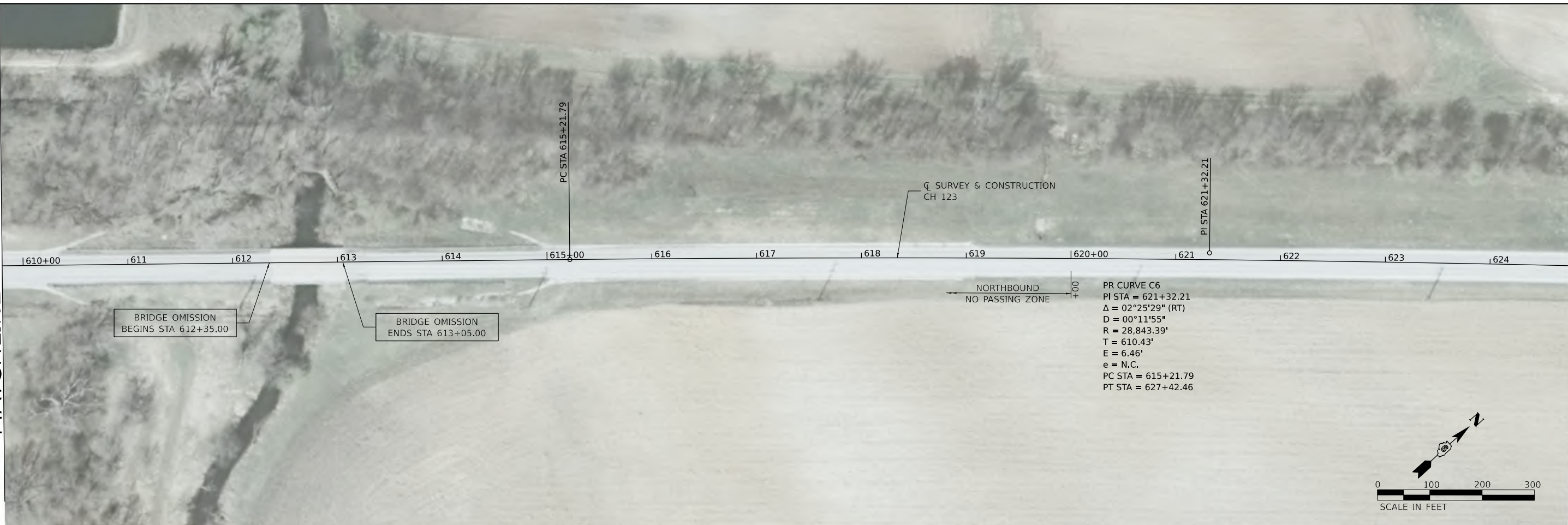
**COUNTY HIGHWAY 123 RESURFACING
 DOUBLE ROADWAY PLAN**

SCALE: 1"=100' SHEET 17 OF 19 SHEETS STA. 579+80.00 TO STA. 609+80.00

F.A.S. RTE.	SECTION	COUNTY	TOTAL SHEETS	SHEET NO.
614	19-00109-00-R5	MORGAN	31	26
CONTRACT NO. 93805				
ILLINOIS FED. AID PROJECT				

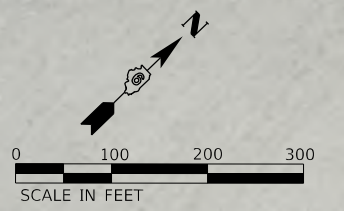
MATCHLINE - STA 609+80

MATCHLINE - STA 624+80



MATCHLINE - STA 624+80

MATCHLINE - STA 639+80



MODEL: 41002L\MAMES
FILE NAME: V:\4858 - CH 123 Resurfacing (Morgan)\CADD\CADD Sheets\4858-shc-hr.dgn

Hutchison Engineering, Inc.
Since 1945
JACKSONVILLE • PEORIA • SHOREWOOD
CARBONDALE • MOLINE
Illinois Professional Design Firm No. 184-000825

USER NAME =	CBurke	DESIGNED -	CMB	REVISED -	
DRAWN -	JCW	REVISIED -			
PLOT SCALE =	0.16666633''/in.	CHECKED -	BMB	REVISED -	
PLOT DATE =	2/28/2023	DATE -	1/2023	REVISED -	

**STATE OF ILLINOIS
DEPARTMENT OF TRANSPORTATION**

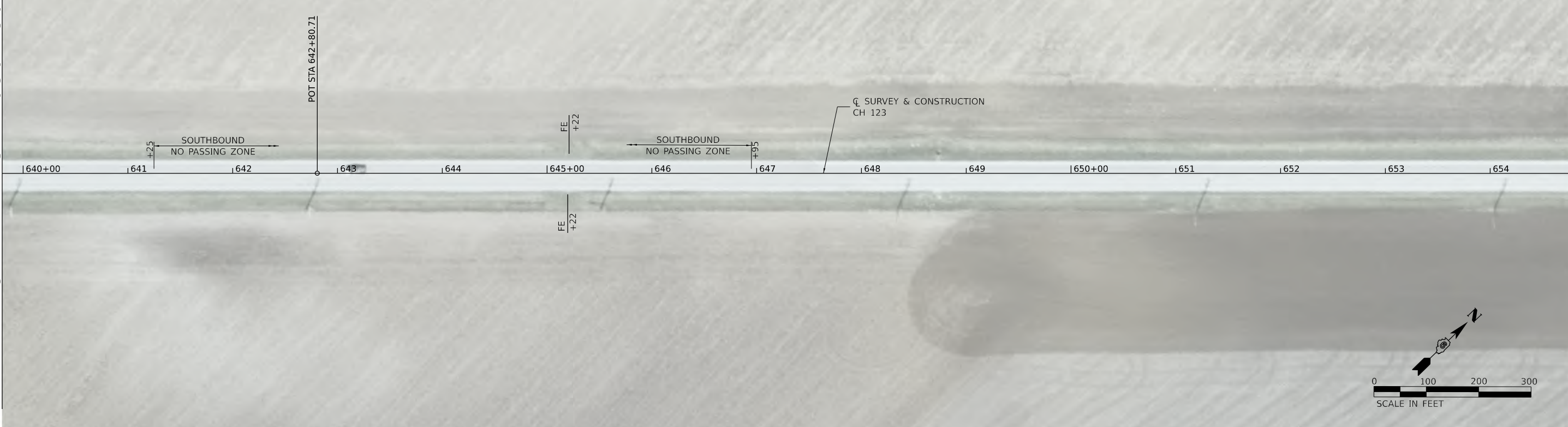
**COUNTY HIGHWAY 123 RESURFACING
DOUBLE ROADWAY PLAN**

SCALE: 1"=100' SHEET 18 OF 19 SHEETS STA. 609+80.00 TO STA. 639+80.00

F.A.S. RTE.	SECTION	COUNTY	TOTAL SHEETS	SHEET NO.
614	19-00109-00-RS	MORGAN	31	27
CONTRACT NO. 93805				
ILLINOIS FED. AID PROJECT				

MATCHLINE - STA 639+80

MATCHLINE - STA 654+80



MATCHLINE - STA 654+80



MODEL: 4100ELNAMES
FILE NAME: V:\4858 - CH 123 Resurfacing (Morgan)\CADD\CADD Sheets\4858-shc-hr.dgn

Since 1945
Hutchison Engineering, Inc.
JACKSONVILLE • PEORIA • SHOREWOOD
CARBONDALE • MCLELLAN
Illinois Professional Design Firm No. 184-000825

USER NAME = CBurke	DESIGNED - CMB	REVISED -
	DRAWN - JCW	REVISED -
PLOT SCALE = 0.16666633' / in.	CHECKED - BMB	REVISED -
PLOT DATE = 2/28/2023	DATE - 1/2023	REVISED -

**STATE OF ILLINOIS
DEPARTMENT OF TRANSPORTATION**

**COUNTY HIGHWAY 123 RESURFACING
DOUBLE ROADWAY PLAN**

SCALE: 1"=100' SHEET 19 OF 19 SHEETS STA. 639+80.00 TO STA. 661+30.00

F.A.S. RTE.	SECTION	COUNTY	TOTAL SHEETS	SHEET NO.
614	19-00109-00-RS	MORGAN	31	28
CONTRACT NO. 93805				
ILLINOIS FED. AID PROJECT				

