

STATE OF ILLINOIS
DEPARTMENT OF TRANSPORTATION

F.A.I. RTE.	SECTION	COUNTY	TOTAL SHEETS	SHEET NO.
57	(10-30)BR	CHAMPAIGN	57	1
ILLINOIS			CONTRACT NO. 70A87	

*112 TOTAL SHEETS
P-95-009-21

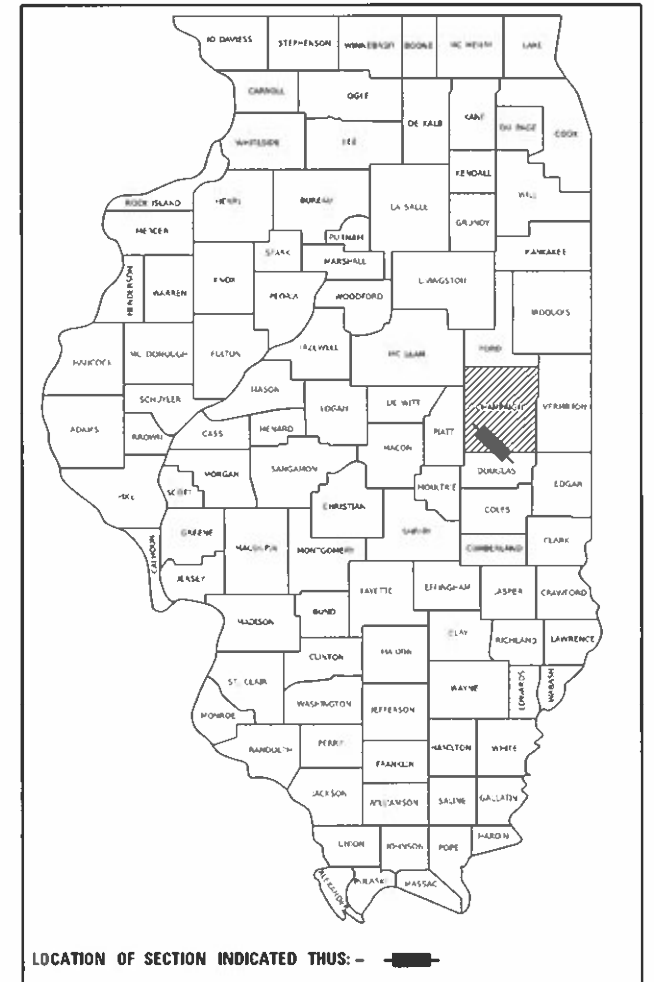
FOR INDEX OF SHEETS, SEE SHEET 2

PROJECT LOCATED IN PESOTUM TOWNSHIP

PROPOSED
HIGHWAY PLANS

FAI ROUTE 57 (I-57)
SECTION (10-30)BR
PROJECT COVD-9XHW(312)

SUPERSTRUCTURE REPLACEMENT
CHAMPAIGN COUNTY



FUNCTIONAL CLASSIFICATION
INTERSTATE
2021 ADT = 11,900
P.V. = 64.7% S.U. = 2.5% M.U. = 32.8%

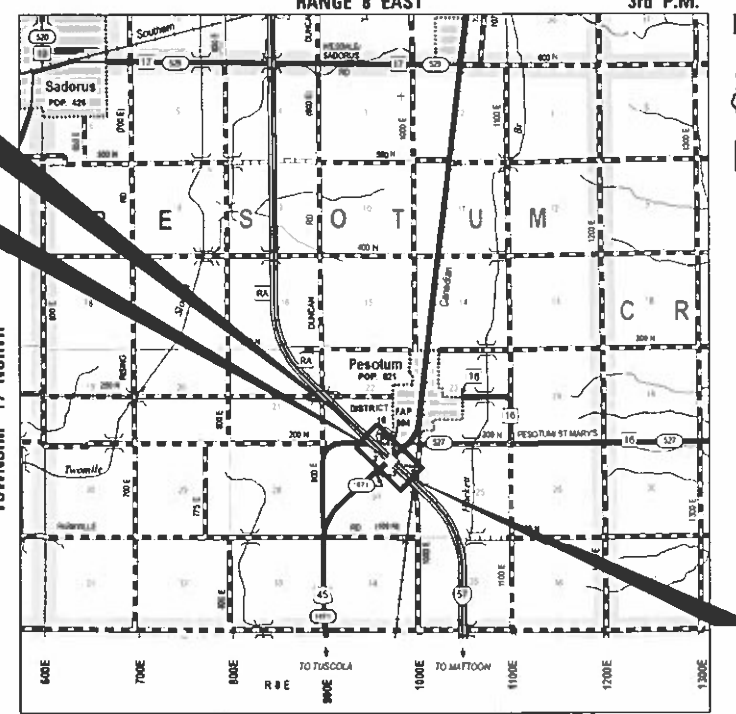
STATE OF ILLINOIS
DEPARTMENT OF TRANSPORTATION
SUBMITTED 3/27 2023
Kensil A. Barnett REGIONAL ENGINEER
May 12, 2023
[Signature] ENGINEER OF DESIGN AND ENVIRONMENT
May 12, 2023
[Signature] DIRECTOR OF HIGHWAYS PROJECT IMPLEMENTATION

PRINTED BY THE AUTHORITY
OF THE STATE OF ILLINOIS

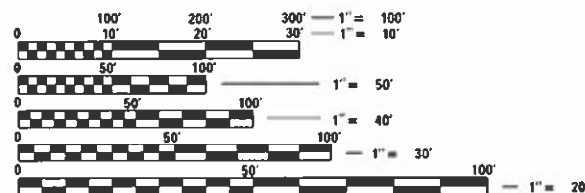
C-95-064-22
I-57 OVER US 45 AT PESOTUM
RANGE 8 EAST

FAI 57 SECTION (10-30)BR
BK. ABUT. STA. 119 + 14.96

EXISTING SN 010-0198 & 010-0199 AT STA 118 + 50
CARRYING I-57 OVER US 45
SUPERSTRUCTURE REPLACEMENT
PROPOSED 27" STEEL I BEAM
3 SPAN INTEGRAL ABUTMENTS



FAI 57 SECTION (10-30)BR
BK. ABUT. STA. 117 + 85.02



FULL SIZE PLANS HAVE BEEN PREPARED USING STANDARD
ENGINEERING SCALES. REDUCED SIZED PLANS WILL NOT
CONFORM TO STANDARD SCALES. IN MAKING MEASUREMENTS
ON REDUCED PLANS, THE ABOVE SCALES MAY BE USED.

J.U.L.I.E.
JOINT UTILITY LOCATION INFORMATION FOR EXCAVATORS
1-800-892-0123
OR 811
PESOTUM TOWNSHIP

PROJECT ENGINEER JASON W. STULTS, P.E.
SQUAD LEADER DAVID E. JAYME, P.E.
PHONE 217-465-4181
CONTRACT NO. 70A87



March 24 20 23
ERIC J. LINDEMANN
ILLINOIS REG. PROFESSIONAL ENGINEER NO. 062-051170
EXPIRATION DATE 11-30-2023
SHEETS 1-29, 31-36, 79-107



INDEX OF SHEETS

- 1 COVER SHEET
- 2 GENERAL NOTES, COMMITMENTS, INDEX OF SHEETS & STANDARDS
- 3-11 SUMMARY OF QUANTITIES
- 12-13 TYPICAL SECTIONS
- 14-17 SCHEDULE OF QUANTITIES
- 18 HORIZONTAL & VERTICAL CONTROL
- 19-20 REMOVAL PLANS
- 21-27 PLAN & PROFILE
- 28-29 STAGING TYPICAL SECTIONS
- 30 PRE-STAGE PATCHING DETAIL
- 31-34 MAINTENANCE OF TRAFFIC PLANS
- 35-37 WIDTH RESTRICTION SIGNING PLANS
- 38-39 EROSION CONTROL & RESTORATION PLANS
- 40-81 STRUCTURAL PLANS
- 82 GUARDRAIL LAYOUT DETAIL
- 83 TEMPORARY RUMBLE STRIP DETAIL
- 84-85 REAL TIME TRAFFIC CONTROL SYSTEM DETAIL
- 86 BUTT JOINT DETAIL
- 87 WEATHER STATION DETAIL
- 88-90E DISTRICT 5 DETAILS 2
- 91-107 CROSS SECTIONS

HIGHWAY STANDARDS

- 000001-08 STANDARD SYMBOLS, ABBREVIATIONS AND PATTERNS
- 001001-02 AREAS OF REINFORCEMENT BARS
- 001006 DECIMAL OF AN INCH AND OF A FOOT
- 280001-07 TEMPORARY EROSION CONTROL SYSTEMS
- 420401-13 PAVEMENT CONNECTOR (PCC) FOR BRIDGE APPROACH SLAB
- 515001-04 NAME PLATE FOR BRIDGES
- 542001-06 CONCRETE END SECTIONS FOR PIPE CULVERTS, 15" THRU 84" DIA.
- 542201-02 REINFORCED CONCRETE END SECTIONS FOR PIPE CULVERTS, 15" THRU 36" DIA., SKEWED WITH ROADWAY
- 542311-07 TRAVERSABLE PIPE GRATE FOR CONCRETE END SECTIONS
- 542401-04 METAL FLARED END SECTION FOR PIPE CULVERTS
- 601001-05 PIPE UNDERDRAINS
- 601101-02 CONCRETE HEADWALL FOR PIPE UNDERDRAINS
- 610001-09 SHOULDER INLET WITH CURB
- 630001-12 STEEL PLATE BEAM GUARDRAIL
- 630301-09 SHOULDER WIDENING FOR TYPE 1 (SPECIAL) GUARDRAIL TERMINALS
- 631031-18 TRAFFIC BARRIER TERMINAL, TYPE 6
- 631033-09 TRAFFIC BARRIER TERMINAL, TYPE 6B
- 642001-03 SHOULDER RUMBLE STRIPS, 16 IN.
- 666001-01 RIGHT OF WAY MARKERS
- 667101-02 PERMANENT SURVEY MARKERS
- 701006-05 OFF-RD OPERATIONS, 2L, 2W, 15' (4.5m) TO 24" (600mm) FROM PAVEMENT EDGE
- 701101-05 OFF-RD OPERATIONS, MULTILANE, 15' (4.5m) TO 24" (600mm) FROM PAVEMENT EDGE
- 701106-02 OFF-RD OPERATIONS, MULTILANE, MORE THAN 15' (4.5m) AWAY
- 701400-11 APPROACH TO LANE CLOSURE, FREEWAY/EXPRESSWAY
- 701402-12 LANE CLOSURE, FREEWAY/EXPRESSWAY, WITH BARRIER
- 701406-13 LANE CLOSURE, FREEWAY/EXPRESSWAY, DAY OPERATIONS ONLY
- 701411-09 LANE CLOSURE, MULTILANE, AT ENTRANCE OR EXIT RAMP, FOR SPEEDS ≥ 45 MPH
- 701428-01 TRAFFIC CONTROL, SETUP AND REMOVAL, FREEWAY/EXPRESSWAY
- 701901-08 TRAFFIC CONTROL DEVICES
- 704001-08 TEMPORARY CONCRETE BARRIER
- 725001-01 OBJECT AND TERMINAL MARKERS
- 781001-04 TYPICAL APPLICATIONS RAISED REFLECTIVE PAVEMENT MARKERS
- 782006-01 GUARDRAIL AND BARRIER WALL REFLECTOR MOUNTING DETAILS
- 836001-04 LIGHT POLE FOUNDATION
- 701201-05 LANE CLOSURE, 2L, 2W, DAY ONLY, FOR SPEEDS ≥ 45 MPH 1

DISTRICT GENERAL NOTES

- GN-100B MICROSTATION AND GEOPAK FILES OF THIS PROJECT WILL BE MADE AVAILIABLE TO THE CONTRACTOR AFTER CONTRACT AWARD. IF THERE IS A CONFLICT BETWEEN THE ELECTRONIC FILES AND THE PRINTED CONTRACT PLANS AND DOCUMENTS, THE PRINTED CONTRACT PLANS AND DOCUMENTS SHALL TAKE PRECEDENCE OVER THE ELECTRONIC FILES. THE CONTRACTOR SHALL ACCEPT ALL RISK ASSOCIATED WITH USING THE ELECTRONIC FILES AND SHALL HOLD THE DEPARTMENT HARMLESS FOR ANY ERRORS OR OMISSIONS IN THE ELECTRONIC FILES AND THE DATA CONTAINED THEREIN. ERRORS OR DELAYS RESULTING FROM THE USE OF ELECTRONIC FILES BY THE CONTRACTOR SHALL NOT RESULT IN AN EXTENSION OF TIME FOR ANY INTERIM OR FINAL COMPLETION DATE OR SHALL NOT BE CONSIDERED CAUSE FOR ADDITIONAL COMPENSATION. THE CONTRACTOR SHALL NOT USE, SHARE, OR DISTRIBUTE THESE ELECTRONIC FILES EXCEPT FOR THE PURPOSE OF CONSTRUCTING THIS CONTRACT. ANY CLAIMS BY THIRD PARTIES DUE TO USE OR ERRORS SHALL BE THE SOLE RESPONSIBILITY OF THE CONTRACTOR. THE CONTRACTOR SHALL INCLUDE THIS DISCLAIMER WITH THE TRANSFER OF THESE ELECTRONIC FILES TO ANY OTHER PARTIES AND SHALL INCLUDE APPROPRIATE LANGUAGE BINDING THEM TO SIMILAR RESPONSIBILITIES.
- GN-105.09A ALL ELEVATIONS SHOWN IN THE PLANS ARE BASED ON NORTH AMERICAN VERTICAL DATUM OF 1988 (NAVD 88).
- GN-201 TREES THAT INTERFERE WITH THE CONSTRUCTION OPERATIONS SHALL BE REMOVED AS DIRECTED BY THE ENGINEER. ANY TREE DUE TO ITS LOCATION AND DEEMED SUITABLE FOR SAVING BY THE ENGINEER SHALL BE PROTECTED DURING CLEARING AND SUBSEQUENT CONSTRUCTION OPERATIONS.
- GN-205 BENCHING PROCEDURES SHALL BE USED IN AREAS WHERE EXISTING EMBANKMENTS ARE WIDENED FOR THE PROPOSED PAVEMENT. STEPS SHALL BE CUT INTO THE EXISTING EMBANKMENT SLOPES AND SHALL HAVE THE FOLLOWING DIMENSIONS:
HORIZONTAL: VARIES
VERTICAL: 4 FOOT
- GN-703A SHORT TERM PAVEMENT MARKING SHALL BE APPLIED TO THE PAVEMENT AFTER ANY OF THE FOLLOW: COLD MILLING AND/OR PLACING BITUMINOUS MATERIALS (TACK COAT), LEVELING BINDER (MACHINE METHOD), BINDER AND SURFACE COURSES, SHORT TERM PAVEMENT MARKING PLACED ON THE SURFACE SHALL COINCIDE WITH THE FINAL PAVEMENT STRIPING. SHORT TERM PAVEMENT MARKING PLACED PRIOR TO THE SURFACE SHALL COINCIDE WITH THE EXISTING PAVEMENT MARKINGS. USE 4 FEET PER 40 FEET (OR 10% PER STATION).

COMMITMENTS

NONE

APPLICATION RATES

THE FOLLOWING RATES OF APPLICATION WERE UTILIZED TO CALCULATE CONTRACT QUANTITIES:

AGGREGATE SHOULDERS, TYPE B	1.80 TON/CY
BITUMINOUS MATERIALS - TACK COAT	0.05 LB/SF
BITUMINOUS MATERIALS - PRIME COAT	0.025 LB/SF
HOT-MIX ASPHALT SURFACE/BINDER/BASE	112 LB/SY PER INCH
NITROGEN FERTILIZER NUTRIENT	90 LB/ACRE
PHOSPHORUS FERTILIZER NUTRIENT	90 LB/ACRE
POTASSIUM FERTILIZER NUTRIENT	90 LB/ACRE
TEMPORARY EROSION CONTROL SEEDING	100 LB/ACRE

**GN-406H
HMA MIXTURE REQUIREMENT TABLE**

LOCATION(S):	I-57	I-57	I-57	I-57	I-57
MIXTURE USE(S):	SURFACE (MAINLINE)	BINDER (TOP 2 1/4" MAINLINE)	BINDER (BOTTOM 11" MAINLINE)	SURFACE (TOP 1 1/2" SHLDR)	BINDER (BOTTOM 6 1/2" SHLDR)
BINDER GRADE (AC/PG):	SBS PG 76-28	SBS PG 76-28	PG 64-22	PG 64-22	PG 64-22
DESIGN AIR VOIDS:	4.0% @ Ndes=90	4.0% @ Ndes=90	4.0% @ Ndes=90	4.0% @ Ndes=50	4.0% @ Ndes=50
MIXTURE COMPOSITION: (MIXTURE GRADATION)	IL-9.5	IL-19.0	IL-19.0	IL-9.5	IL-19.0
FRICTION AGGREGATE:	MIXTURE "D"	N/A	N/A	MIXTURE "C"	N/A
MIXTURE WEIGHT:	112 LB/SQ YD/IN	112 LB/SQ YD/IN	112 LB/SQ YD/IN	112 LB/SQ YD/IN	112 LB/SQ YD/IN
QUALITY MANAGEMENT PROGRAM:	QC/QA	QC/QA	QC/QA	QC/QA	QC/QA
SUBLOT SIZE:	3000	3000	3000	3000	3000
MATERIAL TRANSFER DEVICE (REQUIRED?)	YES	YES	YES	YES	YES

MODEL: N:\model\Bldg\Bldg_Sheet_H... FILE NAME: P:\150107203\B57... US 45 Pk2105-107203.dgn\CAD_Sheet\057087-87-hgencodes.dgn

Kaskaskia
Engineering Group, LLC
152006 NO
152006 YES

USER NAME = jwarner	DESIGNED -	REVISED -
PLOT SCALE = 0.16666833' / In.	DRAWN -	REVISED -
PLOT DATE = 3/30/2023	CHECKED -	REVISED -
	DATE -	REVISED -

**STATE OF ILLINOIS
DEPARTMENT OF TRANSPORTATION**

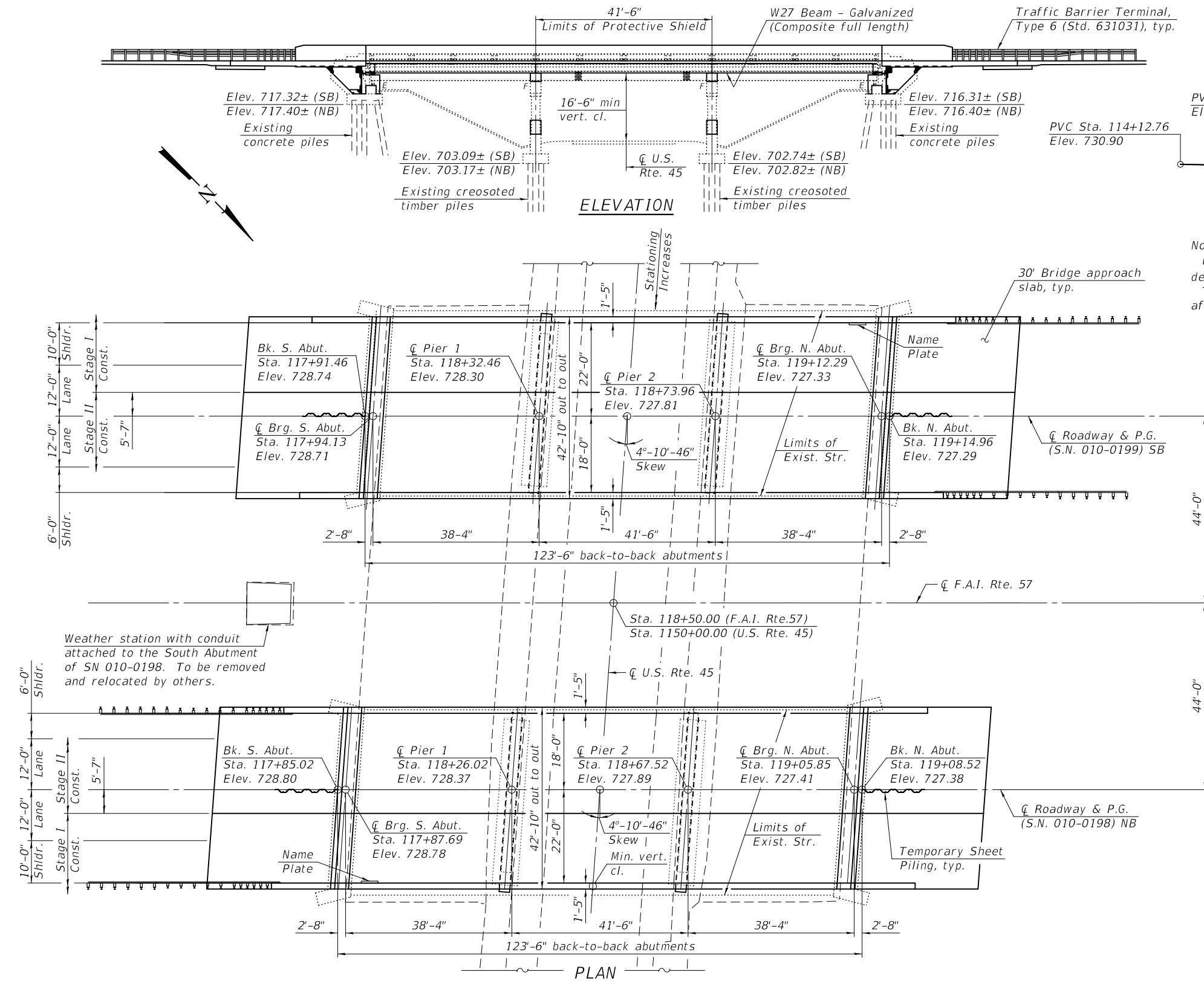
**FAI 57 (I-57)
GENERAL NOTES, COMMITMENTS, INDEX OF SHEETS, AND STANDARDS**

F.A.I. RTE. 57	SECTION (10-30)BR	COUNTY CHAMPAIGN	TOTAL SHEETS 107	SHEET NO. 2
CONTRACT NO. 70A87			ILLINOIS FED. AID PROJECT	

Benchmark: 5049-1, Chiseled square on Northwest corner of controller box foundation, in southeast quadrant of I-57 and U.S. 45. Sta. 1152+23.98; 50.29' RT. - Elevation 705.989.

S.N. 010-0198, 010-0199 Dual structures were built in 1963 as FAI Rte. 57, Section 10-30 HB at Station 118+50. The superstructure consists of a 7" reinforced concrete slab with a 2" concrete wearing surface on seven 27WF84 beams supported by two piers on pile-supported footings and stub abutments on concrete piles. The structures measure 121'-9" from back-to-back of abutments and 43'-8" out-to-out. The existing superstructure is to be removed and replaced and the existing substructure is to be repaired. Traffic is to be maintained using stage construction.

No salvage.



EXPIRES 11-30-2024

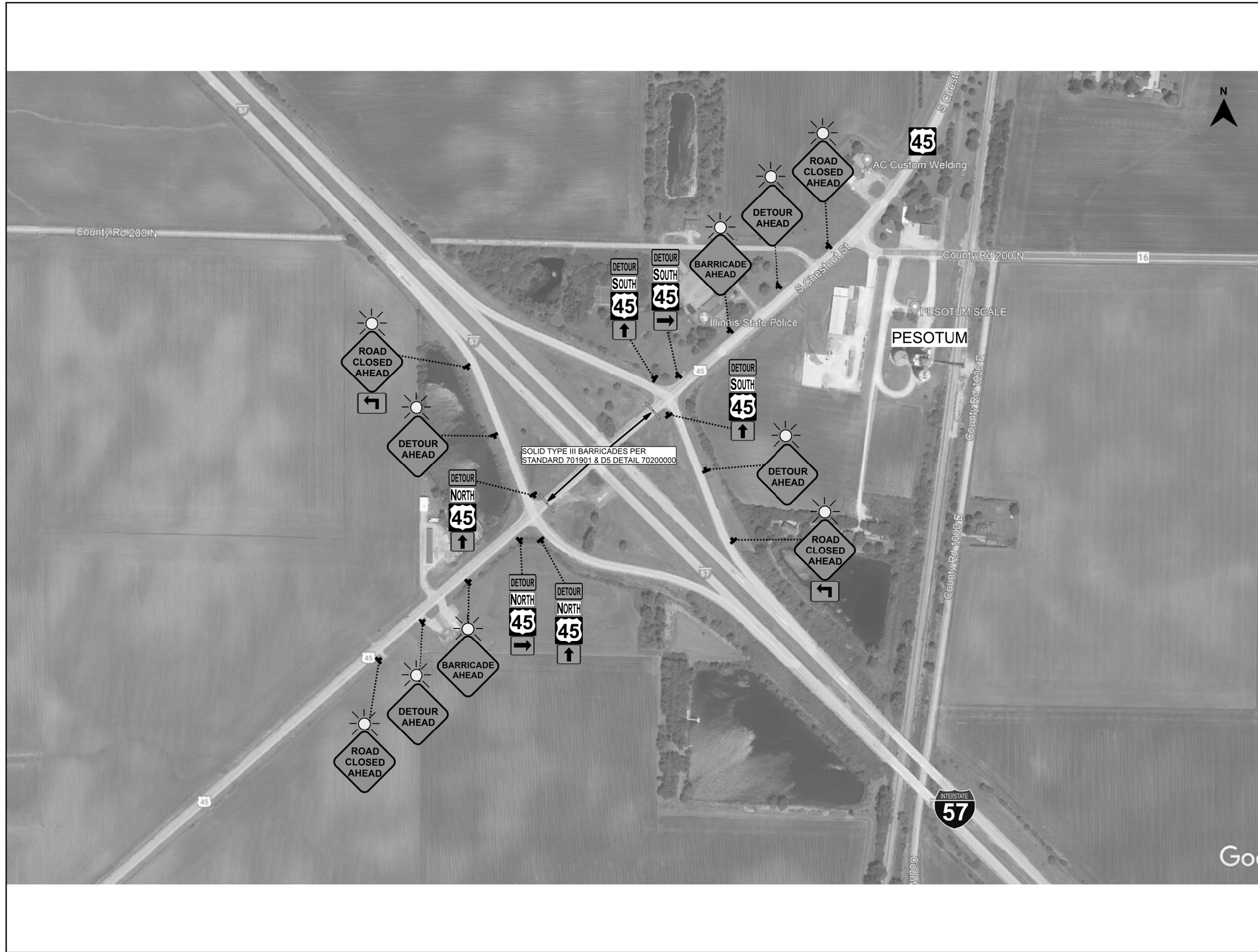
MODEL: 0100198-70A87-001
FILE NAME: pw:\idot-pw-bentley.com\FWIDOT\Documents\IDOT_Offices\Bureau of Bridges and Structures\Projects\0100198\0100198_70A87.dgn

DESIGNED - RYAN P. NEGANGARD	EXAMINED - <i>Mark Shuffler</i> ENGINEER OF BRIDGE DESIGN	DATE - 5-16-2023
CHECKED - DAVID H. RICHTER	PASSED - <i>Jayme E. Schiff</i> ENGINEER OF BRIDGES AND STRUCTURES	REVISED -
DRAWN - DENNIS A. POP		REVISED -
CHECKED - R.P.N. / D.H.R. / G.R.A.		

STATE OF ILLINOIS
DEPARTMENT OF TRANSPORTATION

F.A.I. RTE. 57	SECTION (10-30)BR	COUNTY CHAMPAIGN	TOTAL SHEETS 107	SHEET NO. 40
CONTRACT NO. 70A87				
ILLINOIS FED. AID PROJECT				

REVISED ENTIRE SHEET 6/5/23



MODEL: s400DELNAME
 FILE: NAME: P:\Public\Bentley.com\PNW\DOT\Documents\DOT Offices\District 5\Projects\570A87\CADD\Sheet\570A87-11_Details.dgn

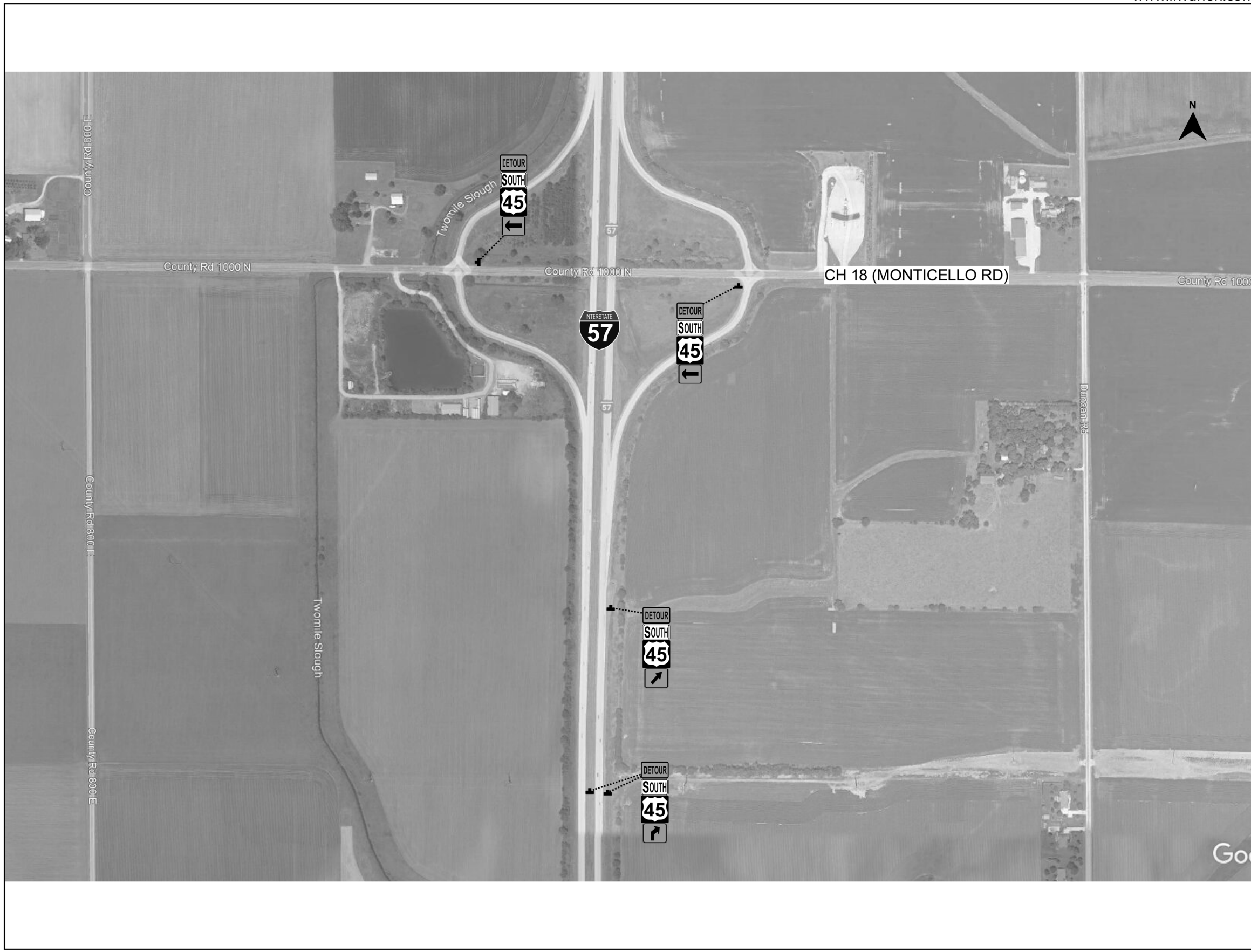
USER NAME = david.jayne	DESIGNED -	REVISED -
	DRAWN - DFJ	REVISED -
PLOT SCALE = 180.0000' / in.	CHECKED -	REVISED -
PLOT DATE = 6/2/2023	DATE -	REVISED -

**STATE OF ILLINOIS
DEPARTMENT OF TRANSPORTATION**

**DETOUR DETAILS
US RT 45**

SCALE: SHEET 002 OF 004 SHEETS STA. TO STA.

F.A.I. RTE.	SECTION	COUNTY	TOTAL SHEETS	SHEET NO.
57	(10-30)BR	CHAMPAIGN		
CONTRACT NO. 70A87				
ILLINOIS FED. AID PROJECT				



MODEL: s:\05\DEL\NAME FILE: NAME: P:\a\illinois\benley.com\FWIDOT\Documents\DOT Offices\District 5\Projects\570A87\CAD\data\CAD\sheet570A87-11_Details.dgn

USER NAME = david.jayne	DESIGNED -	REVISED -
	DRAWN - DFJ	REVISED -
PLOT SCALE = 180.0000' / in.	CHECKED -	REVISED -
PLOT DATE = 6/2/2023	DATE -	REVISED -

**STATE OF ILLINOIS
DEPARTMENT OF TRANSPORTATION**

DETOUR DETAILS US RT 45			
SCALE:	SHEET 003	OF 004 SHEETS	STA. TO STA.

F.A.I. RTE.	SECTION	COUNTY	TOTAL SHEETS	SHEET NO.
57	(10-30)BR	CHAMPAIGN		
CONTRACT NO. 70A87				
ILLINOIS FED. AID PROJECT				



MODEL: \\400\DEL\NAME\...
 FILE: \\400\DEL\NAME\...

USER NAME = david.jayne	DESIGNED -	REVISED -
	DRAWN - DFJ	REVISED -
PLOT SCALE = 180.0000' / in.	CHECKED -	REVISED -
PLOT DATE = 6/2/2023	DATE -	REVISED -

**STATE OF ILLINOIS
DEPARTMENT OF TRANSPORTATION**

**DETOUR DETAILS
US RT 45**

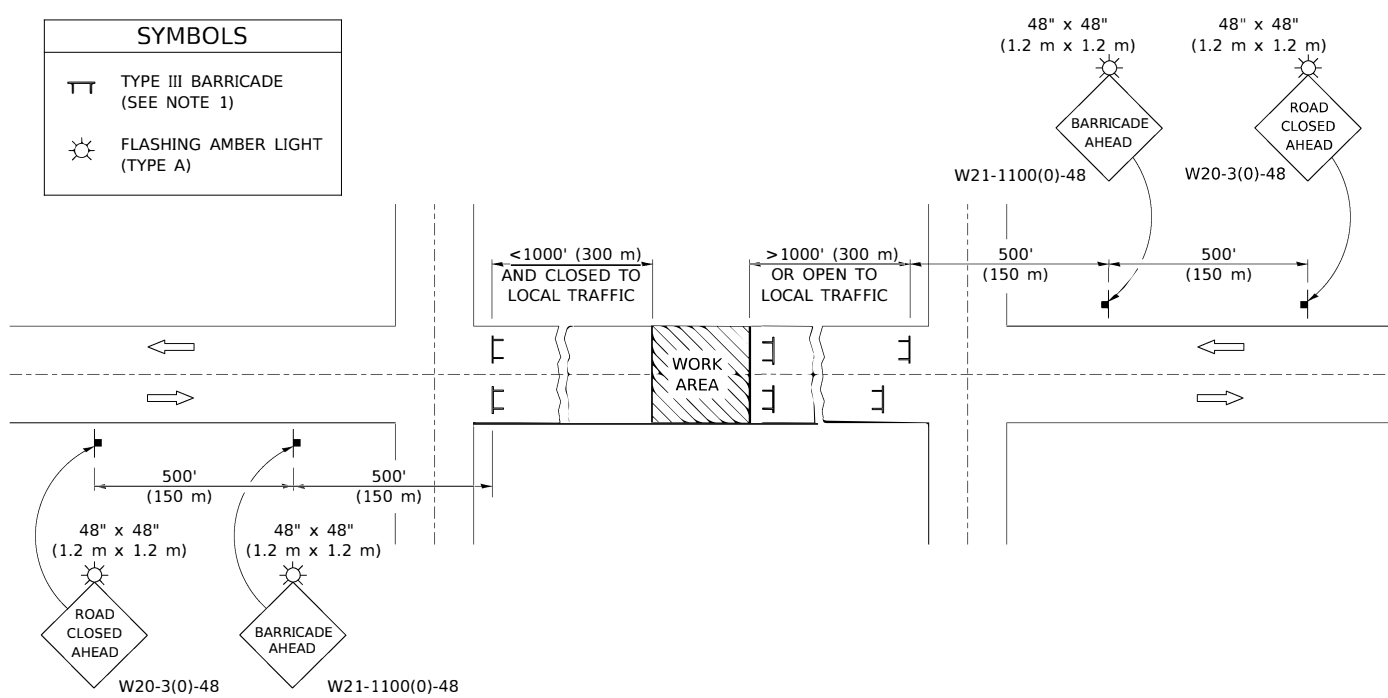
SCALE: SHEET 004 OF 004 SHEETS STA. TO STA.

F.A.I. RTE.	SECTION	COUNTY	TOTAL SHEETS	SHEET NO.
57	(10-30)BR	CHAMPAIGN		
CONTRACT NO. 70A87				
ILLINOIS FED. AID PROJECT				

ROAD CLOSURE

SIDEROAD / STREET CLOSURE

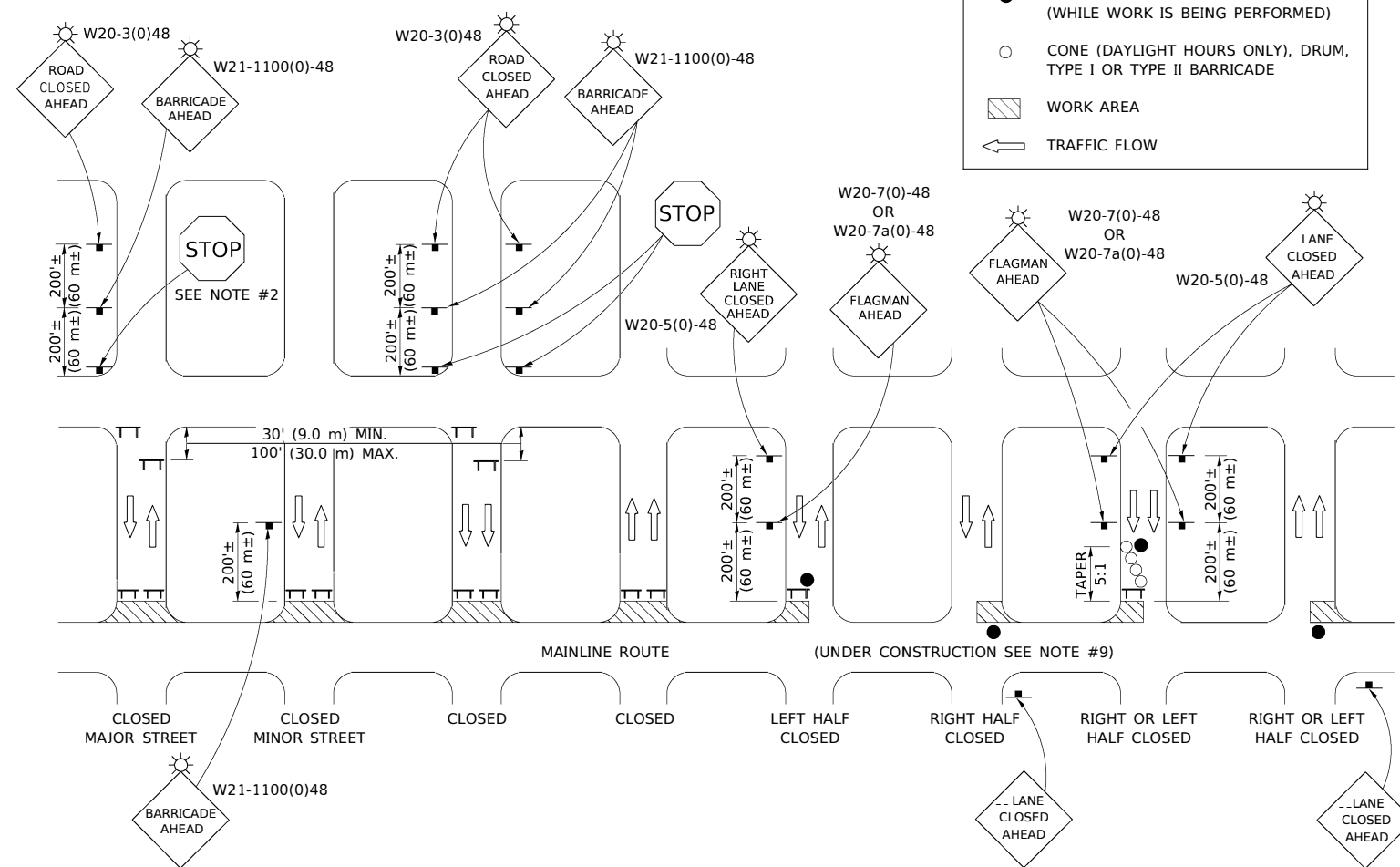
SYMBOLS	
	TYPE III BARRICADE (SEE NOTE 1)
	FLASHING AMBER LIGHT (TYPE A)



GENERAL NOTES

- TYPE III BARRICADES SHALL BE AS SHOWN ON STANDARD 701901 "TYPICAL APPLICATIONS OF TYPE III BARRICADES CLOSING A ROAD". EACH TYPE III BARRICADE SHALL HAVE TWO FLASHING AMBER LIGHTS MOUNTED ABOVE IT.
- IF THE ROAD IS OPEN TO LOCAL TRAFFIC OR EXCEEDS 1000' (300 m), ANOTHER SET OF TYPE III BARRICADES, EQUIPPED AS IN NOTE 1 ABOVE, SHALL BE PLACED AT EACH END OF THE WORK AREA.
- WHEN A STOP CONDITION EXISTS, NO SIGNS ARE REQUIRED IN ADVANCE OF THE "STOP" SIGN WHEN THE ROAD IS CLOSED WITHIN 100' (30 m) OF THE INTERSECTION.
- STANDARD 701901 SHALL APPLY FOR THE PLACEMENT & DESIGN OF TYPE III BARRICADES.
- IF A TYPE III BARRICADE WITH AN ATTACHED SIGN PANEL WHICH MEETS NCHRP 350 IS NOT AVAILABLE, THE SIGNS MAY BE MOUNTED ON AN NCHRP 350 TEMPORARY SIGN SUPPORT DIRECTLY IN FRONT OF THE BARRICADE.
- REFLECTORIZED STRIPING SHALL APPEAR ON BOTH SIDES OF THE TYPE III BARRICADES IF ROAD IS OPEN TO LOCAL TRAFFIC.
- ALL SIGNS SHALL BE POST MOUNTED IF THE CLOSURE TIME EXCEEDS FOUR DAYS.
- A MINIMUM OF TWO FLASHING LIGHTS SHALL BE USED AT NIGHT ON EACH APPROACH IN ADVANCE OF THE WORK AREA. FLASHING LIGHTS SHALL BE INSTALLED ABOVE THE FIRST TWO SIGNS IN THE SERIES.
- LONGITUDINAL DIMENSIONS MAY BE ADJUSTED SLIGHTLY TO FIT FIELD CONDITIONS.
- FORMS BSPE 725 AND BSPE 726 ARE REQUIRED.**
- WHEN A SIDEROAD INTERSECTS THE HIGHWAY ON WHICH WORK IS BEING PERFORMED, ADDITIONAL TRAFFIC DEVICES SHALL BE ERECTED AND PROVIDED AS DIRECTED BY THE ENGINEER.
- AN ADDITIONAL SIGN MAY BE REQUIRED AT A MAJOR INTERSECTING ROAD IN ADVANCE OF THE CLOSURE. THE ADDITIONAL SIGN SHALL GIVE THE DISTANCE TO THE BARRICADE IN MILES OR FRACTIONS OF A MILE.

SYMBOLS	
	TYPE III BARRICADE (SEE NOTE)
	FLASHING LIGHT
	FLAGGER WITH TRAFFIC CONTROL SIGN (WHILE WORK IS BEING PERFORMED)
	CONE (DAYLIGHT HOURS ONLY), DRUM, TYPE I OR TYPE II BARRICADE
	WORK AREA
	TRAFFIC FLOW



GENERAL NOTES

- TYPE III BARRICADES SHALL BE AS SHOWN ON "TYPICAL APPLICATIONS OF TYPE III BARRICADES CLOSING A ROAD". EACH TYPE III BARRICADE SHALL HAVE TWO FLASHING AMBER LIGHTS MOUNTED ABOVE IT.
- WHERE A STOP CONDITION EXISTS, AS SHOWN ABOVE, WARNING SIGNS MAY BE OMITTED IN ADVANCE OF THE "STOP" SIGN.
- STANDARD 701901 SHALL APPLY FOR THE PLACEMENT & MANUFACTURE OF TYPE III BARRICADES.
- ALL SIGNS SHALL BE POST MOUNTED IF THE CLOSURE TIME EXCEEDS FOUR DAYS.
- ONE FLASHING LIGHT IS REQUIRED ABOVE EACH ADVANCE WARNING SIGN DURING HOURS OF DARKNESS.
- LONGITUDINAL DIMENSIONS MAY BE ADJUSTED SLIGHTLY TO FIT FIELD CONDITIONS.
- FORMS BSPE 725 AND BSPE 726 ARE REQUIRED.**
- THE MAINLINE ROUTE TEMPORARY TRAFFIC CONTROL SHALL BE IN ACCORDANCE WITH THE PLANS, SPECIAL PROVISIONS AND STANDARD SPECIFICATIONS.
- ALL FLAGGERS REQUIRED AT SIDE ROADS AND ENTRANCES REMAINING OPEN TO TRAFFIC AND/OR ADDITIONAL BARRICADES REQUIRED BY THE ENGINEER TO CLOSE SIDE ROADS AND ENTRANCES WILL BE PAID FOR ACCORDING TO ARTICLE 109.04.

Note: All dimensions are in INCHES (millimeters) unless otherwise shown.

MODEL: 440DELMAMES
FILE: NAME: P:\Public\paw_bentley.com\PROJECTS\DOT_Offices\District_5\Projects\570A87\CADD\DATA\CAD\Sheet70200000.dgn

USER NAME = david.jayme	DESIGNED -	REVISED - 11/06
	DRAWN -	REVISED - 12/07
PLOT SCALE = 40.0000' / in.	CHECKED -	REVISED - 09/09 KJT
PLOT DATE = 6/2/2023	DATE -	REVISED -

STATE OF ILLINOIS
DEPARTMENT OF TRANSPORTATION

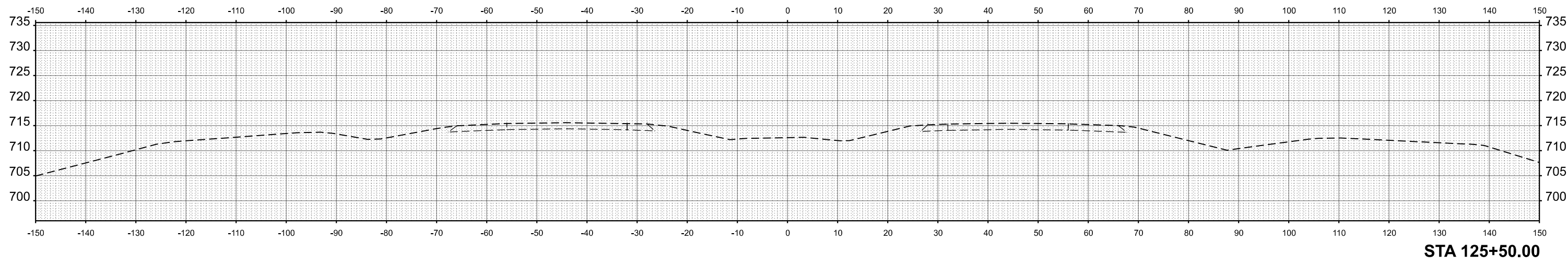
TRAFFIC CONTROL & PROTECTION DEVICES
(ROAD & SIDEROAD / STREET CLOSURES)

SCALE: SHEET 1 OF 1 SHEETS STA. TO STA.

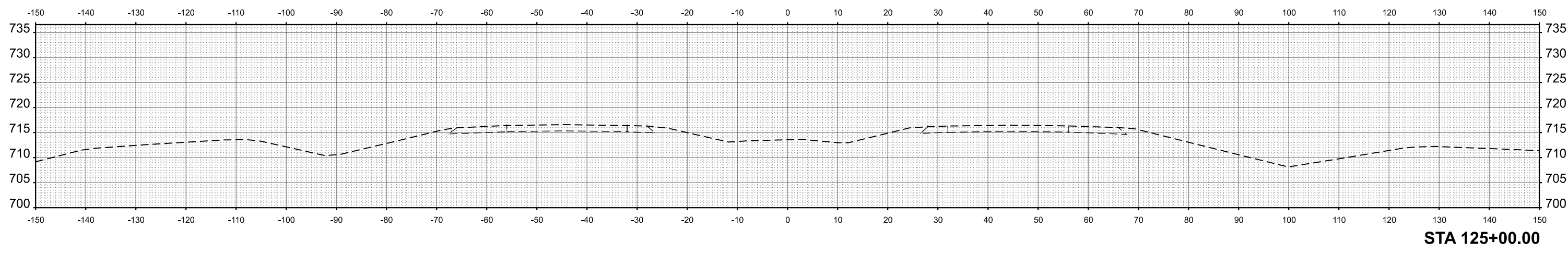
DISTRICT 5 DETAIL NO. 7020000

F.A.I. RTE.	SECTION	COUNTY	TOTAL SHEETS	SHEET NO.
57	(10-30)BR	CHAMPAIGN		
CONTRACT NO. 70A87				
ILLINOIS FED. AID PROJECT				

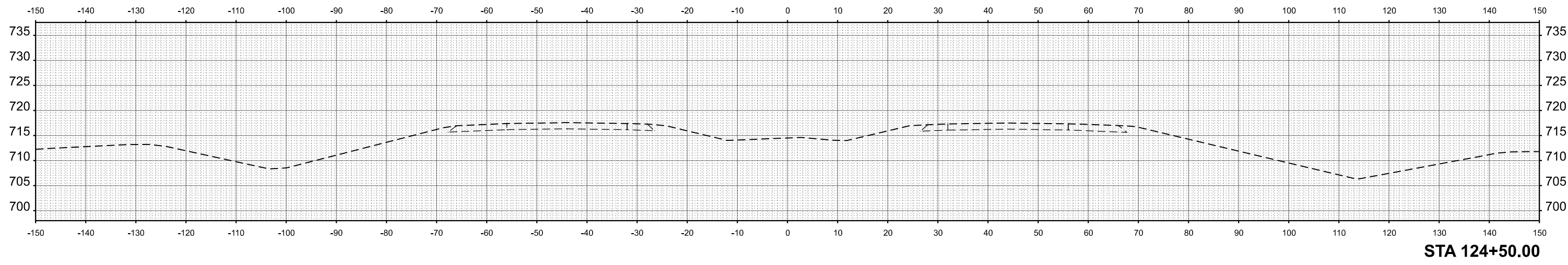
DATE	
BY	
SURVEYED	
PLOTTED	
TEMPLATE	
AREAS	
CHECKED	
NO.	



DATE	
BY	
SURVEYED	
PLOTTED	
TEMPLATE	
AREAS	
CHECKED	
NO.	



DATE	
BY	
SURVEYED	
PLOTTED	
TEMPLATE	
AREAS	
CHECKED	
NO.	



MODEL: E:\CL - 124-50.00 R2 [B]mxd
 FILE NAME: P:\2023\12457 over US 45 P2\124-124-50.00 R2.dwg



USER NAME = jwarner	DESIGNED -	REVISED -
	DRAWN -	REVISED -
PLOT SCALE = 0.16666633' / in.	CHECKED -	REVISED -
PLOT DATE = 3/24/2023	DATE -	REVISED -

**STATE OF ILLINOIS
 DEPARTMENT OF TRANSPORTATION**

FAI 57 (I-57) CROSS SECTIONS			
SCALE: 1"=10'	SHEET 17	OF 17 SHEETS	STA. TO STA.

F.A.I. RTE. 57	SECTION (10-30)BR	COUNTY CHAMPAIGN	TOTAL SHEETS 107	SHEET NO. 107
CONTRACT NO. 70A87				
ILLINOIS FED. AID PROJECT				

REVISED ENTIRE SHEET 6/5/23