

DATE	
BY	
SUBMITTED	
PLOTTED	
ALIGNMENT CHECKED	
RECORDED	
CADD FILE NAME	
PLAN	
NOTE BOOK	
NO.	

DATE	
BY	
SUBMITTED	
PLOTTED	
GRANDS CHECKED	
STRUCTURE NOTATIONS CHECKED	
PROFILE	
NOTE BOOK	
NO.	

SPECIALTY ITEM	CODE NO.	ITEM	UNIT	TOTAL QUANTITY	CONSTRUCTION CODE								
					0005	0004	0004	0021	0042	0042	0021	0021	
					RESURFACING	RECONSTRUCTION	RECONSTRUCTION	SAFETY (LIGHTING)	TRAINEES	TRAINEES	NON-PARTICIPATING	NON-PARTICIPATING	
					80% FEDERAL / 20% VILLAGE	80% FEDERAL / 20% VILLAGE	80% FEDERAL / 20% VILLAGE	80% FEDERAL / 20% VILLAGE	80% FEDERAL / 20% VILLAGE	80% FEDERAL / 20% VILLAGE	100% VILLAGE	100% VILLAGE	
ROSELLE	ROSELLE	SCHAUMBURG	SCHAUMBURG	ROSELLE	SCHAUMBURG	ROSELLE	SCHAUMBURG						
X	20100110	TREE REMOVAL (6 TO 15 UNITS DIAMETER)	UNIT	119			119						
	20101000	TEMPORARY FENCE	FOOT	2145	360	1225	560						
X	20101200	TREE ROOT PRUNING	EACH	20	1	1	18						
X	20101300	TREE PRUNING (1 TO 10 INCH DIAMETER)	EACH	18	1	1	16						
X	20101350	TREE PRUNING (OVER 10 INCH DIAMETER)	EACH	7			7						
	20200100	EARTH EXCAVATION	CU YD	4748		1028	3720						
	20201200	REMOVAL AND DISPOSAL OF UNSUITABLE MATERIAL	CU YD	2861		1603	1258						
	20400800	FURNISHED EXCAVATION	CU YD	6829		4029	2800						
	20800150	TRENCH BACKFILL	CU YD	1166		177	989						
	21000310	GRANULAR EMBANKMENT, SPECIAL	CU YD	1857		1857							
	21001000	GEOTECHNICAL FABRIC FOR GROUND STABILIZATION	SQ YD	5447		3518	1929						
	21101505	TOPSOIL EXCAVATION AND PLACEMENT	CU YD	1068		517	551						
	21101615	TOPSOIL FURNISH AND PLACE, 4"	SQ YD	3961	250	3095	616						
X	25000210	SEEDING, CLASS 2A	ACRE	2.5	0.5	1.0	1.0						
X	25000312	SEEDING, CLASS 4A	ACRE	1.5		1.0	0.5						
X	25000400	NITROGEN FERTILIZER NUTRIENT	POUND	218	17	118	83						
X	25000600	POTASSIUM FERTILIZER NUTRIENT	POUND	218	17	118	83						

MODEL: \\MODEL\NAMES
FILE NAME: 13172.dwg, S00.dgn



Two Pierce Place, Suite 1400
Itasca, Illinois 60143
Tel: 630.773.3900 Fax: 630.773.3975
www.civiltechinc.com

DESIGNED - KDC	REVISED - 06/05/2023
DRAWN - KDC	REVISED -
CHECKED - DJK	REVISED -
DATE - 2/28/2023	REVISED -

VILLAGE OF SCHAUMBURG /
VILLAGE OF ROSELLE

SUMMARY OF QUANTITIES

SHEET 1 OF 15 SHEETS

MUNTR RTE.	SECTION	COUNTY	TOTAL SHEETS	SHEET NO.
0666/0092	18-00132-00-PV	COOK / DUPAGE	177	6
CONTRACT NO. 61109			ILLINOIS	

DATE: _____ BY: _____
 SURVEYED: _____ PLOTTED: _____
 PLAN: _____ NOTE BOOK: _____
 NO. _____ CADD FILE NAME: _____

DATE: _____ BY: _____
 SURVEYED: _____ PLOTTED: _____
 PROFILE: _____ NOTE BOOK: _____
 NO. _____ STRUCTURE NOTATIONS CHECKED: _____

SPECIALTY ITEM	CODE NO.	ITEM	UNIT	TOTAL QUANTITY	CONSTRUCTION CODE								
					0005	0004	0004	0021	0042	0042	0021	0021	
					RESURFACING	RECONSTRUCTION	RECONSTRUCTION	SAFETY (LIGHTING)	TRAINEES	TRAINEES	NON-PARTICIPATING	NON-PARTICIPATING	
					80% FEDERAL / 20% VILLAGE	80% FEDERAL / 20% VILLAGE	80% FEDERAL / 20% VILLAGE	80% FEDERAL / 20% VILLAGE	80% FEDERAL / 20% VILLAGE	80% FEDERAL / 20% VILLAGE	100% VILLAGE	100% VILLAGE	
ROSELLE	ROSELLE	SCHAUMBURG	SCHAUMBURG	ROSELLE	SCHAUMBURG	ROSELLE	SCHAUMBURG						
X	B2004816	TREE, MALUS SARGENTII (SARGENT CRABAPPLE), 2" CALIPER, TREE FORM, BALLED AND BURLAPPED	EACH	2	1		1						
X	B2006216	TREE, SYRINGA RETICULATA (JAPANESE TREE LILAC), 2" CALIPER, TREE FORM, BALLED AND BURLAPPED	EACH	2			2						
X	K0029634	WEED CONTROL, PRE-EMERGENT GRANULAR HERBICIDE	POUND	2	1		1						
X	K0036120	MULCH PLACEMENT 4"	SQ YD	24	20		4						
	X0100003	CLEARING AND GRUBBING	SQ YD	1919	1919		1						
X	X0320586	FLEXIBLE DELINEATORS	EACH	36		18	18						
	X0325833	WICK DRAINS	FOOT	32936		32936							
	X0327036	BIKE PATH REMOVAL	SQ YD	1183		159	1024						
	X0327037	SPECIAL GRATE NO. 1	EACH	1		1							
	X0327038	SPECIAL GRATE NO. 2	EACH	1		1							
X	X0327349	TEMPORARY WOOD POLE, 40 FT., CLASS 4	EACH	1			1						
X	X0327350	TEMPORARY WOOD POLE, 50 FT., CLASS 4, 15 FT. MAST ARM	EACH	3			3						
	X0327487	TRIAxIAL GEOGRID REINFORCEMENT, TYPE I	SQ YD	3084		2786	298						
X	X1400238	LUMINAIRE, LED, SPECIAL	EACH	14			14						
X	X1400349	SOLAR-POWERED FLASHING BEACON INSTALLATION	EACH	2			2						
X	X2010400	STUMP REMOVAL ONLY	UNIT	180		126	54						

MODEL: SMODELNAME
 FILE NAME: 13572_SPL_S00.dgn



Two Pierce Place, Suite 1400
 Itasca, Illinois 60143
 Tel: 630.773.3900 Fax: 630.773.3975
 www.civiltechinc.com

DESIGNED - KDC
 DRAWN - KDC
 CHECKED - DJK
 DATE - 2/28/2023
 REVISED - 06/05/2023
 REVISED -
 REVISED -

VILLAGE OF SCHAUMBURG /
 VILLAGE OF ROSELLE

SUMMARY OF QUANTITIES

SHEET 11 OF 15 SHEETS

MUNTR RTE.	SECTION	COUNTY	TOTAL SHEETS	SHEET NO.
0666/0092	18-00132-00-PV	COOK / DUPAGE	177	16
			CONTRACT NO. 61109	

ILLINOIS

DATE	
BY	
SUBMITTED	
PLOTTED	
ALIGNMENT CHECKED	
RECORDED	
CADD FILE NAME	
PLAN	
NOTE BOOK	
NO.	

DATE	
BY	
SUBMITTED	
PLOTTED	
GRANDS CHECKED	
STRUCTURE NOTATIONS CHECKED	
PROFILE	
NOTE BOOK	
NO.	

SPECIALTY ITEM	CODE NO.	ITEM	UNIT	TOTAL QUANTITY	CONSTRUCTION CODE								
					0005	0004	0004	0021	0042	0042	0021	0021	
					RESURFACING	RECONSTRUCTION	RECONSTRUCTION	SAFETY (LIGHTING)	TRAINEES	TRAINEES	NON-PARTICIPATING	NON-PARTICIPATING	
					80% FEDERAL / 20% VILLAGE	80% FEDERAL / 20% VILLAGE	80% FEDERAL / 20% VILLAGE	80% FEDERAL / 20% VILLAGE	80% FEDERAL / 20% VILLAGE	80% FEDERAL / 20% VILLAGE	100% VILLAGE	100% VILLAGE	
ROSELLE	ROSELLE	SCHAUMBURG	SCHAUMBURG	ROSELLE	SCHAUMBURG	ROSELLE	SCHAUMBURG						
	Z0022800	FENCE REMOVAL	FOOT	1336			1336						
	Z0023600	FILLING EXISTING CULVERTS	EACH	1		1							
	Z0030850	TEMPORARY INFORMATION SIGNING	SQ FT	60			60						
X	Z0033020	LUMINAIRE SAFETY CABLE ASSEMBLY	EACH	18				18					
X	Z0033028	MAINTENANCE OF LIGHTING SYSTEM	CAL MO	15				15					
	Z0048665	RAILROAD PROTECTIVE LIABILITY INSURANCE	L SUM	1		0.5	0.5						
	Z0056100	SAND DRAINAGE BLANKET	CU YD	929		929							
	Z0056610	STORM SEWER (WATER MAIN REQUIREMENTS) 15 INCH	FOOT	24		24							
	Z0062458	TEMPORARY PAVEMENT (VARIABLE DEPTH)	TON	7			7						
	Z0065100	SETTLEMENT PLATFORMS	EACH	6		6							
X	Z0073510	TEMPORARY TRAFFIC SIGNAL TIMING	EACH	5		2	3						
	Z0076600	TRAINEES	HOUR	500				250	250				
	Z0076604	TRAINEES TRAINING PROGRAM GRADUATE	HOUR	500				250	250				
	XX009578	CONTRACTOR DESIGNED GROUND IMPROVEMENT	L SUM	1		1							
X	XX009579	LIGHT POLE, SPECIAL (FURNISH ONLY)	EACH	3									3
X	XX009580	LUMINAIRE, LED, SPECIAL (FURNISH ONLY)	EACH	3									3

MODEL: \\MODEL\NAMES
FILE NAME: 13172.dwg, S00.dgn



Two Pierce Place, Suite 1400
Itasca, Illinois 60143
Tel: 630.773.3900 Fax: 630.773.3975
www.civiltechinc.com

DESIGNED - KDC	REVISED - 06/05/2023
DRAWN - KDC	REVISED -
CHECKED - DJK	REVISED -
DATE - 2/28/2023	REVISED -

VILLAGE OF SCHAUMBURG /
VILLAGE OF ROSELLE

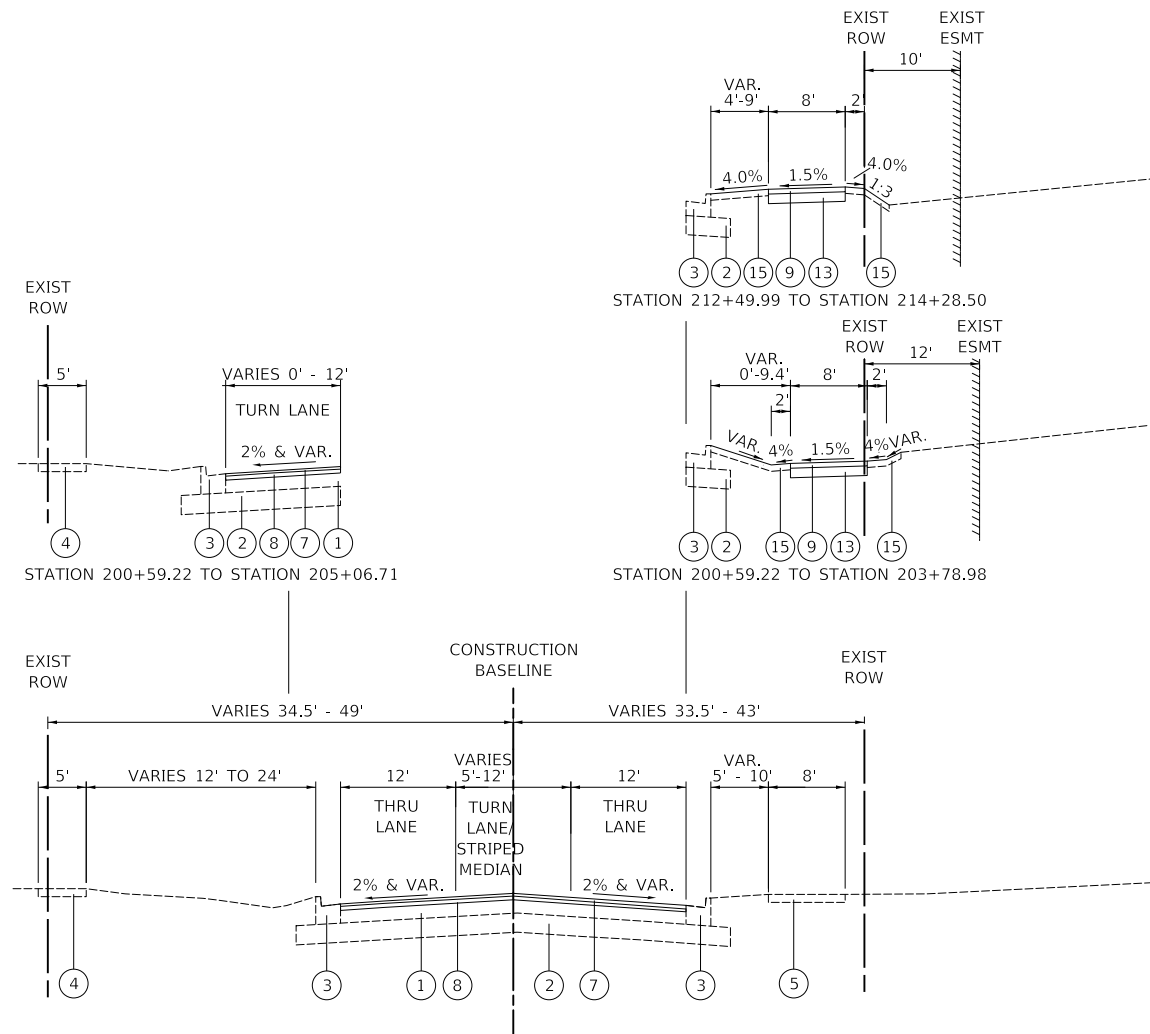
SUMMARY OF QUANTITIES

SHEET 14 OF 15 SHEETS

MUNTR RTE.	SECTION	COUNTY	TOTAL SHEETS	SHEET NO.
0666/0092	18-00132-00-PV	COOK / DUPAGE	177	19
CONTRACT NO. 61109			ILLINOIS	

DATE	
BY	
PLAN	
NO.	
DATE	
BY	
PROFILE	
NO.	

DATE	
BY	
PROFILE	
NO.	
DATE	
BY	
PLAN	
NO.	



PROPOSED TYPICAL SECTION
RODENBURG ROAD
STATION 200+59.22 TO STATION 214+28.50

LEGEND

- ① EXISTING H.M.A. PAVEMENT, 10" & VARIES
- ② EXISTING AGGREGATE BASE, 12"
- ③ EXISTING COMBINATION CONCRETE CURB AND GUTTER, TYPE B-6.24
- ④ EXISTING P.C.C. SIDEWALK
- ⑤ EXISTING H.M.A. MULTI-USE PATH
- ⑥ CHAIN LINK FENCE, 4' (SPECIAL)
- ⑦ HOT-MIX ASPHALT SURFACE COURSE, MIX "D", IL-9.5, N70 2"
- ⑧ POLYMERIZED HOT-MIX ASPHALT BINDER COURSE, IL-4.75, N50 ¾"
- ⑨ HOT-MIX ASPHALT SURFACE COURSE, MIX "D", IL-9.5, N50 3"
- ⑩ PROPOSED COMBINATION CONCRETE CURB AND GUTTER, TYPE B-6.24
- ⑪ PROPOSED CONCRETE MEDIAN, TYPE SB-6.12 (GUTTER SLOPE 2% TOWARD PAVEMENT)
- ⑫ AGGREGATE SUBGRADE IMPROVEMENT, 12"
- ⑬ AGGREGATE BASE COURSE, TYPE B, 6"
- ⑭ HOT-MIX ASPHALT BINDER COURSE, IL-19.0, N70, 8"
- ⑮ TOPSOIL (4")
SEE LANDSCAPING PLANS FOR PROPOSED SEED/SOD TYPE
- ⑯ HOT-MIX ASPHALT BINDER COURSE, IL-19.0, N70 10"
- ⑰ AGGREGATE SUBGRADE IMPROVEMENT
- ⑱ TRIAXIAL GEOGRID REINFORCEMENT, TYPE I
- ⑲ WICK DRAINS AND SAND DRAINAGE BLANKET
- ⑳ CHAIN LINK FENCE, 6' (SPECIAL)

1] PAID FOR AS HMA PAVEMENT (FULL DEPTH), 10"
2] PAID FOR AS HMA PAVEMENT (FULL DEPTH), 12"

MODEL: SMODEL\MAMES
FILE NAME: ...032-TYPICAL\032-TYP



Two Pierce Place, Suite 1400
Itasca, Illinois 60143
Tel: 630.773.3900 Fax: 630.773.3975
www.civiltechinc.com

DESIGNED -	KDC	REVISED -	6/5/2023
DRAWN -	KDC	REVISED -	
CHECKED -	DJK	REVISED -	
DATE -	2/28/2023	REVISED -	

**VILLAGE OF SCHAUMBURG /
VILLAGE OF ROSELLE**

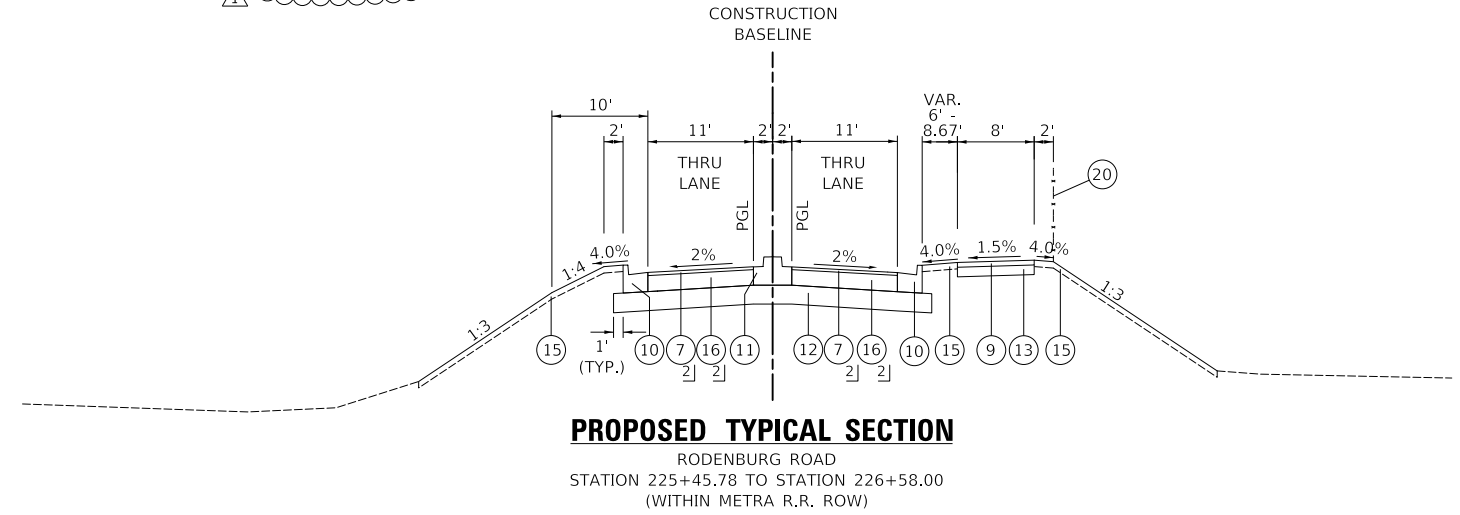
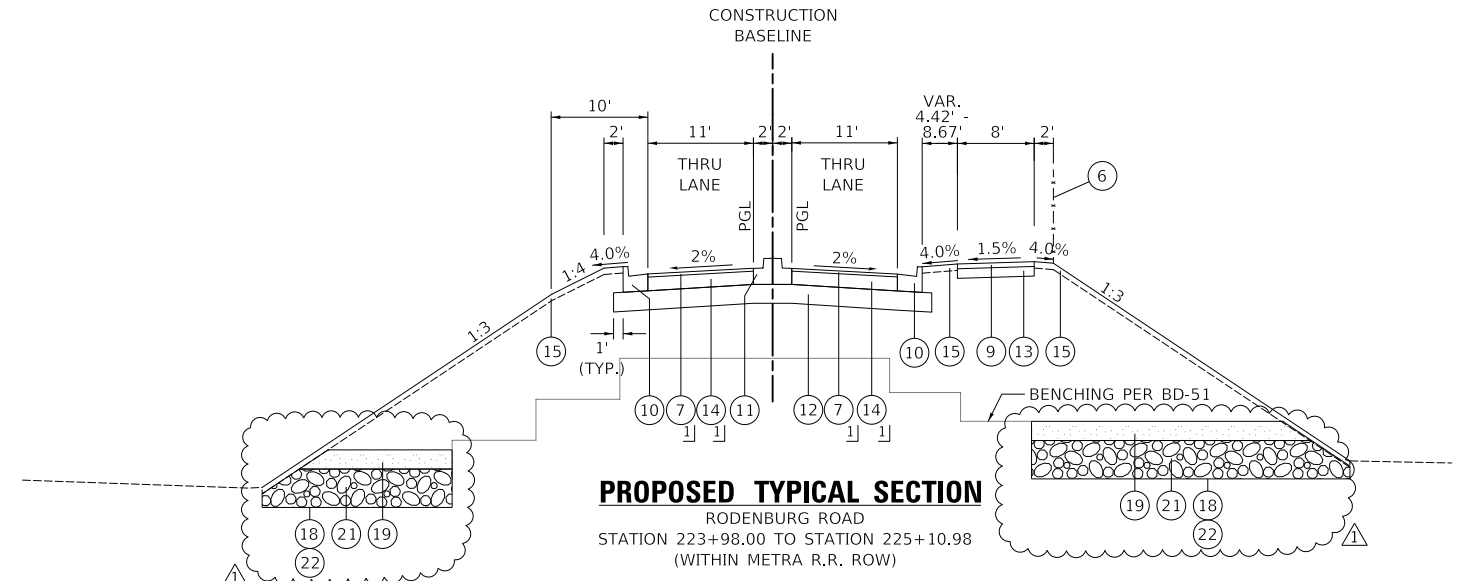
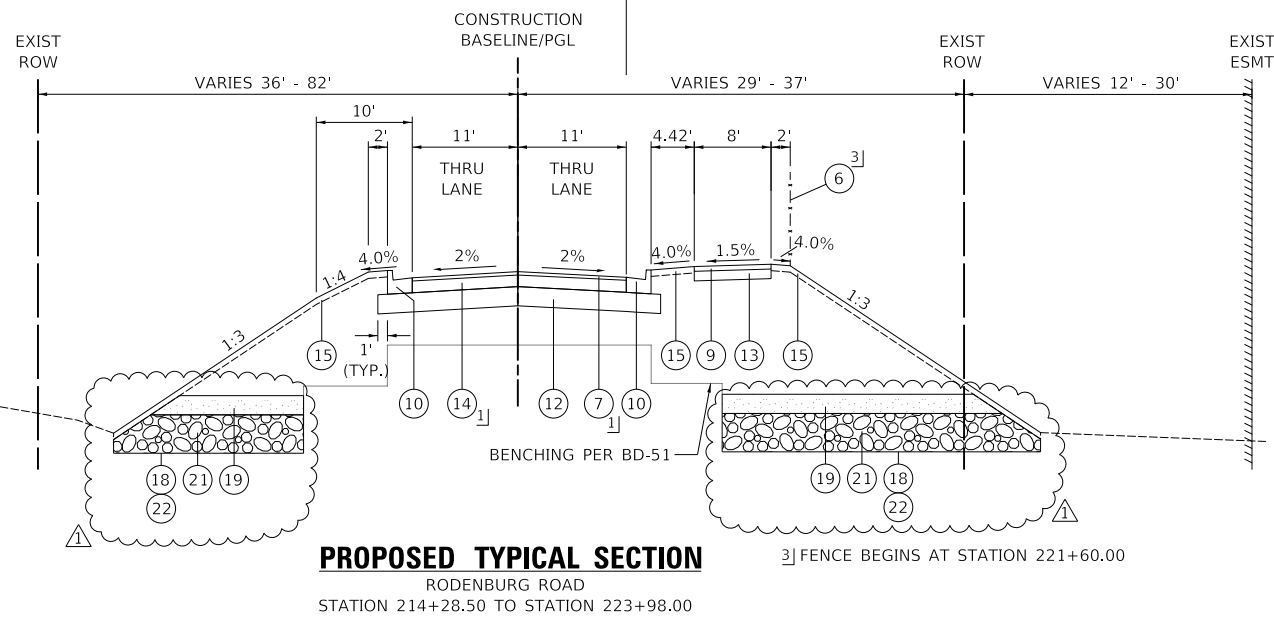
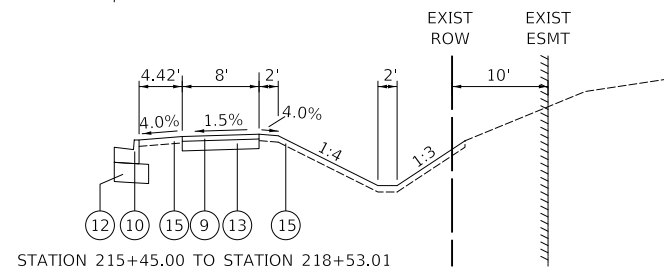
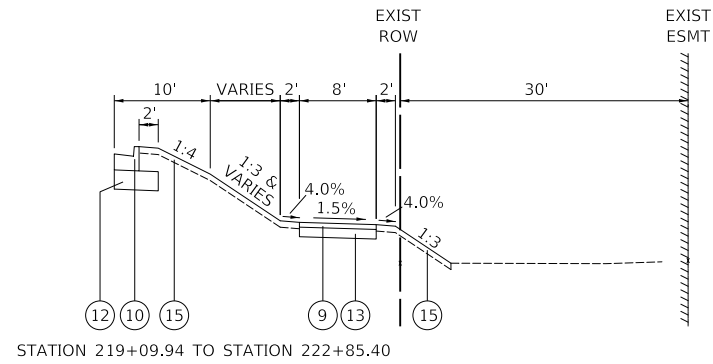
PROPOSED TYPICAL SECTIONS

SHEET 1 OF 3 SHEETS

MUN/TR RTE.	SECTION	COUNTY	TOTAL SHEETS	SHEET NO.
0666/0092	18-00132-00-PV	COOK / DUPAGE	177	23
				CONTRACT NO. 61J09
				ILLINOIS

DATE	
BY	
PLAN	SURVEYED
	PLOTTED
	ALIGNMENT CHECKED
	GRADES CHECKED
	STRUCTURE NOTATIONS CHECKED
	NO. _____
	FILE NAME _____

DATE	
BY	
PROFILE	SURVEYED
	PLOTTED
	GRADES CHECKED
	STRUCTURE NOTATIONS CHECKED
	NO. _____
	FILE NAME _____



LEGEND

- | | |
|---|--|
| ① EXISTING H.M.A. PAVEMENT, 10" & VARIES | ⑫ AGGREGATE SUBGRADE IMPROVEMENT, 12" |
| ② EXISTING AGGREGATE BASE, 12" | ⑬ AGGREGATE BASE COURSE, TYPE B, 6" |
| ③ EXISTING COMBINATION CONCRETE CURB AND GUTTER, TYPE B-6.24 | ⑭ HOT-MIX ASPHALT BINDER COURSE, IL-19.0, N70, 8" |
| ④ EXISTING P.C.C. SIDEWALK | ⑮ TOPSOIL (4")
SEE LANDSCAPING PLANS FOR PROPOSED SEED/SOD TYPE |
| ⑤ EXISTING H.M.A. MULTI-USE PATH | ⑯ HOT-MIX ASPHALT BINDER COURSE, IL-19.0, N70 10" |
| ⑥ CHAIN LINK FENCE, 4' (SPECIAL) | ⑰ AGGREGATE SUBGRADE IMPROVEMENT |
| ⑦ HOT-MIX ASPHALT SURFACE COURSE, MIX "D", IL-9.5, N70 2" | ⑱ WICK DRAINS AND SAND DRAINAGE BLANKET |
| ⑧ POLYMERIZED HOT-MIX ASPHALT BINDER COURSE, IL-4.75, N50 ¾" | ⑳ CHAIN LINK FENCE, 6' (SPECIAL) |
| ⑨ HOT-MIX ASPHALT SURFACE COURSE, MIX "D", IL-9.5, N50 3" | ㉑ GRANULAR EMBANKMENT, SPECIAL |
| ⑩ PROPOSED COMBINATION CONCRETE CURB AND GUTTER, TYPE B-6.24 | ㉒ GEOTECHNICAL FABRIC FOR GROUND STABILIZATION |
| ⑪ PROPOSED CONCRETE MEDIAN, TYPE SB-6.12
(GUTTER SLOPE 2% TOWARD PAVEMENT) | |

1] PAID FOR AS HMA PAVEMENT (FULL DEPTH), 10"
2] PAID FOR AS HMA PAVEMENT (FULL DEPTH), 12"

MODEL: SMODELNAMAS
FILE NAME: ...032-TYPE1818372-TYP

CIVILTECH
Two Pierce Place, Suite 1400
Itasca, Illinois 60143
Tel: 630.773.3900 Fax: 630.773.3975
www.civiltechinc.com

DESIGNED -	KDC	REVISED	6/5/2023
DRAWN -	KDC	REVISED	-
CHECKED -	DJK	REVISED	-
DATE -	2/28/2023	REVISED	-

**VILLAGE OF SCHAUMBURG /
VILLAGE OF ROSELLE**

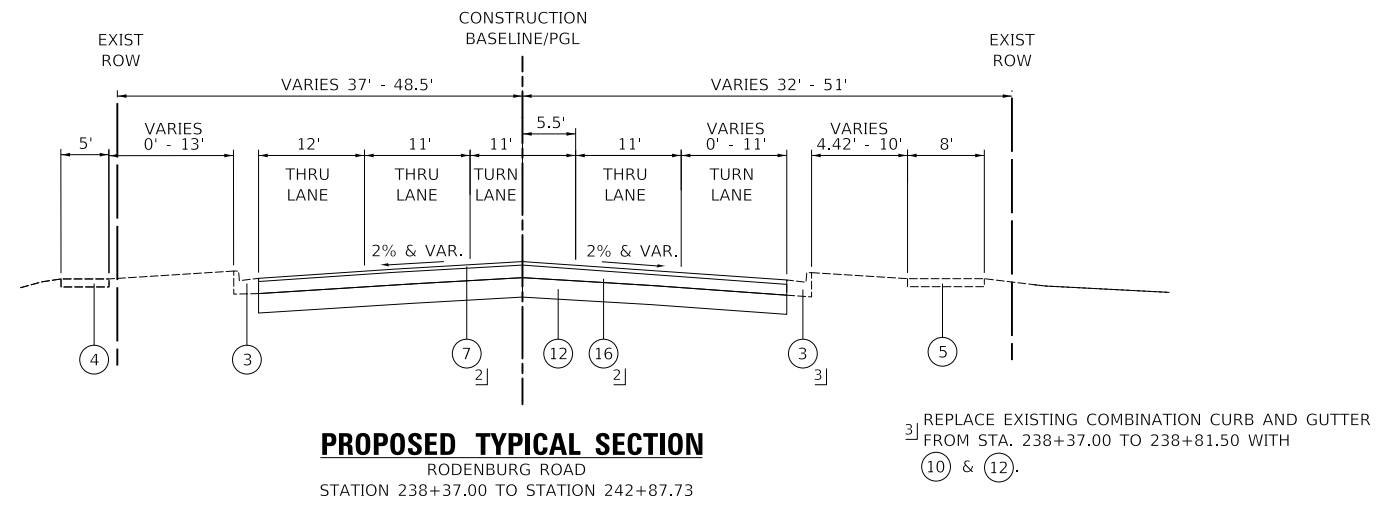
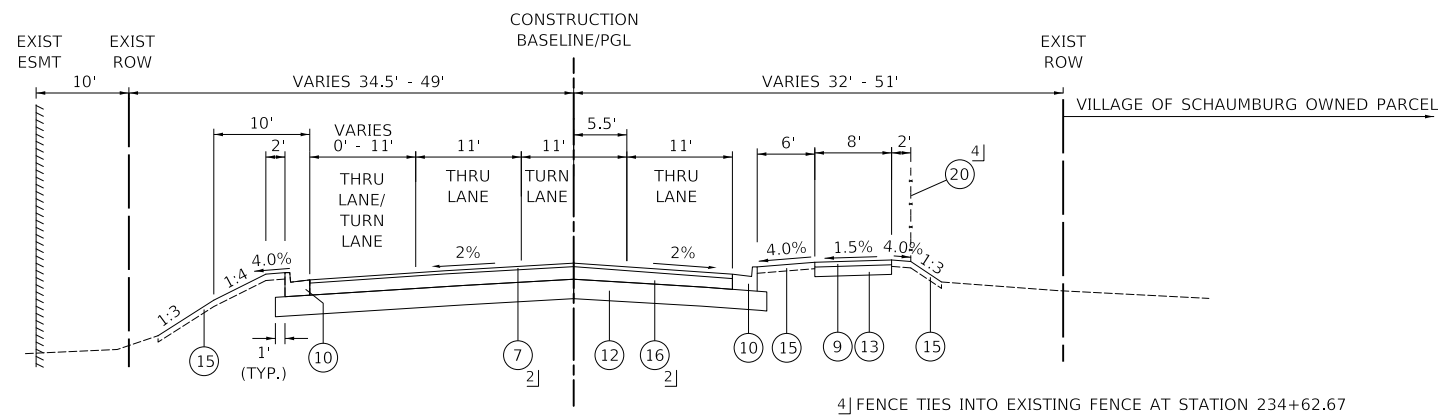
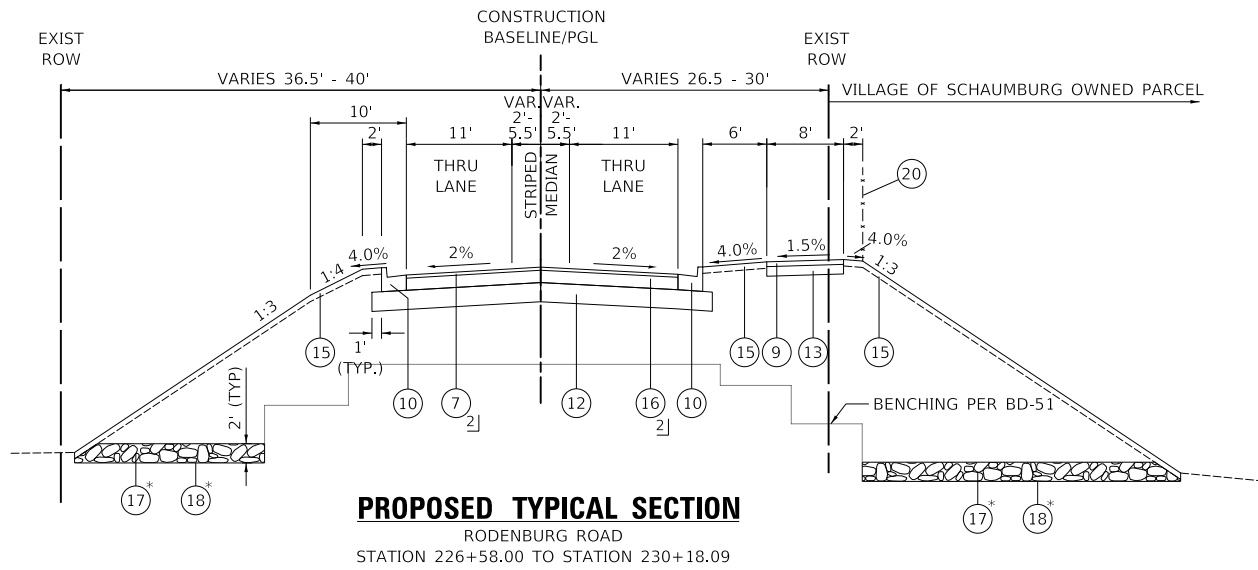
PROPOSED TYPICAL SECTIONS

SHEET 2 OF 3 SHEETS

MUN/TR RTE.	SECTION	COUNTY	TOTAL SHEETS	SHEET NO.
0666/0092	18-00132-00-PV	COOK / DUPAGE	177	24
			CONTRACT NO. 61109	
ILLINOIS				

DATE	
BY	
PLAN	SURVEYED
	PLOTTED
	ALIGNMENT CHECKED
	GRADES CHECKED
	STRUCTURE NOTATIONS CHECKED
	FILE NAME
	NO.

DATE	
BY	
PROFILE	SURVEYED
	PLOTTED
	GRADES CHECKED
	STRUCTURE NOTATIONS CHECKED
	FILE NAME
	NO.



HOT-MIX ASPHALT MIXTURE REQUIREMENTS TABLE		
MIXTURE TYPE	AIR VOIDS @ Ndes	QMP
PAVEMENT RESURFACING		
HOT-MIX ASPHALT SURFACE COURSE, MIX "D", IL-9.5, N70; 2"	4% @ 70 GYR.	LR 1030-2
POLYMERIZED HOT-MIX ASPHALT BINDER COURSE, IL-4.75, N50; ¾"	3.5% @ 50 GYR.	LR 1030-2
PAVEMENT RECONSTRUCTION (HOT-MIX ASPHALT PAVEMENT (FULL-DEPTH), 10")		
HOT-MIX ASPHALT SURFACE COURSE, MIX "D", IL-9.5, N70; 2"	4% @ 70 GYR.	LR 1030-2
HOT-MIX ASPHALT BINDER COURSE, IL-19.0, N70; 8"	4% @ 70 GYR.	LR 1030-2
PAVEMENT RECONSTRUCTION (HOT-MIX ASPHALT PAVEMENT (FULL-DEPTH), 12")		
HOT-MIX ASPHALT SURFACE COURSE, MIX "D", IL-9.5, N70; 2"	4% @ 70 GYR.	LR 1030-2
HOT-MIX ASPHALT BINDER COURSE, IL-19.0, N70; 10"	4% @ 70 GYR.	LR 1030-2
DRIVEWAYS		
HOT-MIX ASPHALT SURFACE COURSE, MIX "D", IL-9.5, N50; 1½"	4% @ 50 GYR.	LR 1030-2
HOT-MIX ASPHALT BINDER COURSE, IL-19.0, N50; 5"	4% @ 50 GYR.	LR 1030-2
MULTI-USE PATH		
HOT-MIX ASPHALT SURFACE COURSE, MIX "D", IL-9.5, N50 3" (IN TWO LIFTS)	4% @ 50 GYR.	LR 1030-2
PATCHING		
CLASS D PATCH (HMA BINDER IL-19 mm); 8"	4% @ 70 GYR.	LR 1030-2
TEMPORARY PAVEMENT (VARIABLE DEPTH)		
HOT-MIX ASPHALT BINDER COURSE, IL-19.0, N50; VARIES 2.25" TO 6"	4% @ 50 GYR.	LR 1030-2
RAILROAD PLUG		
HOT-MIX ASPHALT BINDER COURSE, IL-19.0, N50; 8"	4% @ 50 GYR.	LR 1030-2
QMP DESIGNATION: QUALITY CONTROL/QUALITY ASSURANCE (QC/QA) PER LR 1030-2		

- NOTES:
1. THE UNIT WEIGHT USED TO CALCULATE ALL HOT-MIX ASPHALT SURFACE MIXTURE QUANTITIES IS 112 LB/SY-IN.
 2. THE "AC TYPE" FOR POLYMERIZED HMA MIXES SHALL BE "SBS/SBR PG 76-22" AND FOR NON-POLYMERIZED HMA THE "AC TYPE" SHALL BE "PG 64-22" UNLESS MODIFIED BY RECLAIMED MATERIALS SPECIFICATIONS.
 3. APPLY LONGITUDINAL JOINT SEALANT OVER THE POLYMERIZED HMA BASE COURSE IL-4.75, N50 OF PAVEMENT RESURFACING SECTIONS.
 4. APPLY LONGITUDINAL JOINT SEALANT BEFORE AND AFTER THE TOP LIFT OF HMA BINDER IL-19.0, N70 OF THE HMA PAVEMENT (FULL DEPTH).
 5. THE CONTRACTOR SHALL MILL THE PAVEMENT BEFORE PATCHING.

* TABLE 1: SUMMARY OF PROPOSED SUBGRADE IMPROVEMENTS (VILLAGE OF SCHAUMBURG)		
STATION RANGE	OFFSET RANGE	PROPOSED IMPROVEMENT
227+90 TO 229+80	35' - 45' LT 48' - 63' RT	AGGREGATE SUBGRADE IMPROVEMENT OVER TRIAXIAL GEOGRID REINFORCEMENT

LEGEND

- ① EXISTING H.M.A. PAVEMENT, 10" & VARIES
- ② EXISTING AGGREGATE BASE, 12"
- ③ EXISTING COMBINATION CONCRETE CURB AND GUTTER, TYPE B-6.24
- ④ EXISTING P.C.C. SIDEWALK
- ⑤ EXISTING H.M.A. MULTI-USE PATH
- ⑥ CHAIN LINK FENCE, 4' (SPECIAL)
- ⑦ HOT-MIX ASPHALT SURFACE COURSE, MIX "D", IL-9.5, N70 2"
- ⑧ POLYMERIZED HOT-MIX ASPHALT BINDER COURSE, IL-4.75, N50 ¾"
- ⑨ HOT-MIX ASPHALT SURFACE COURSE, MIX "D", IL-9.5, N50 3"
- ⑩ PROPOSED COMBINATION CONCRETE CURB AND GUTTER, TYPE B-6.24
- ⑪ PROPOSED CONCRETE MEDIAN, TYPE SB-6.12 (GUTTER SLOPE 2% TOWARD PAVEMENT)
- ⑫ AGGREGATE SUBGRADE IMPROVEMENT, 12"
- ⑬ AGGREGATE BASE COURSE, TYPE B, 6"
- ⑭ HOT-MIX ASPHALT BINDER COURSE, IL-19.0, N70, 8"
- ⑮ TOPSOIL (4")
SEE LANDSCAPING PLANS FOR PROPOSED SEED/SOD TYPE
- ⑯ HOT-MIX ASPHALT BINDER COURSE, IL-19.0, N70 10"
- ⑰ AGGREGATE SUBGRADE IMPROVEMENT
- ⑱ TRIAXIAL GEOGRID REINFORCEMENT, TYPE I
- ⑲ WICK DRAINS AND SAND DRAINAGE BLANKET
- ⑳ CHAIN LINK FENCE, 6' (SPECIAL)
- 1] PAID FOR AS HMA PAVEMENT (FULL DEPTH), 10"
- 2] PAID FOR AS HMA PAVEMENT (FULL DEPTH), 12"

MODEL: SHODLNAME
FILE NAME: ...032-TYPE1818372-TYP



Two Pierce Place, Suite 1400
Itasca, Illinois 60143
Tel: 630.773.3900 Fax: 630.773.3975
www.civiltechinc.com

DESIGNED -	KDC	REVISED	6/5/2023
DRAWN -	KDC	REVISED	-
CHECKED -	DJK	REVISED	-
DATE -	2/28/2023	REVISED	-

**VILLAGE OF SCHAUMBURG /
VILLAGE OF ROSELLE**

PROPOSED TYPICAL SECTIONS

SHEET 3 OF 3 SHEETS

MUN/TR RTE.	SECTION	COUNTY	TOTAL SHEETS	SHEET NO.
0666/0092	18-00132-00-PV	COOK / DUPAGE	177	25
				CONTRACT NO. 61109
				ILLINOIS

PLAN	SURVEYED	DATE
	PLOTTED	BY
NOTE BOOK NO.	ALIGNMENT CHECKED	
	GRADE CHECKED	
	STRUCTURE NOTATION CHECKED	
	FILE NAME	

PROFILE	SURVEYED	DATE
	PLOTTED	BY
NOTE BOOK NO.	GRADES CHECKED	
	STRUCTURE NOTATION CHECKED	

SCHEDULE OF EARTHWORK							
RODENBURG ROAD - SOUTH OF METRA TRACKS (VILLAGE OF ROSELLE) (STAGE 1)							
STATION	DISTANCE	CUT	CUT - UNSUITABLE MATERIAL	FILL	CUT	CUT - UNSUITABLE MATERIAL	FILL
(XX+XX)	(FT.)	(SQ. FT.)	(SQ. FT.)	(SQ. FT.)	(CU. YD.)	(CU. YD.)	(CU. YD.)
212+48.93		0.0	0.0	0.0			
	51				0.0	0.0	0.0
213+00.		0.0	0.0	0.0			
	50				0.0	0.0	0.0
213+50.		0.0	0.0	0.0			
	50				0.0	0.0	0.0
214+00.		0.0	0.0	0.0			
	50				0.0	0.0	0.0
214+50.		0.0	0.0	0.0			
	50				0.0	0.0	0.0
215+00.		0.0	0.0	0.0			
	50				0.0	0.0	0.0
215+50.		0.0	0.0	0.0			
	50				0.0	0.0	0.0
216+00.		0.0	0.0	0.0			
	50				0.0	0.0	0.0
216+50.		0.0	0.0	0.0			
	50				0.0	0.0	0.0
217+00.		0.0	0.0	0.0			
	50				0.0	0.0	0.0
217+50.		0.0	0.0	0.0			
	50				0.0	0.0	0.0
218+00.		0.0	0.0	0.0			
	50				0.0	0.0	0.0
218+50.		0.0	0.0	0.0			
	50				0.0	0.0	0.0
219+00.		0.0	0.0	0.0			
	50				1.4	3.6	48.8
219+50.		1.5	3.8	52.7			
	50				4.9	6.0	104.9
220+00.		3.7	2.6	60.6			
	50				6.3	6.1	94.9
220+50.		3.1	3.9	41.9			
	50				5.0	7.1	88.7
221+00.		2.2	3.7	53.9			
	50				3.5	6.8	117.2
221+50.		1.6	3.7	72.7			
	50				5.1	7.8	175.3
222+00.		3.9	4.7	116.7			
	50				12.6	11.2	256.3
222+50.		9.7	7.4	160.1			
	50				27.2	22.0	350.0
223+00.		19.7	16.4	217.9			
	50				36.7	23.8	364.1
223+50.		20.0	9.3	175.3			
	50				58.2	16.8	349.4
224+00.		42.9	8.9	202.1			
	50				60.9	14.7	312.5
224+50.		22.9	6.9	135.4			
	50				42.2	13.1	289.7
225+00.		22.7	7.3	177.4			
	10				4.3	1.4	33.4
225+10.18		0.0	0.0	0.0			
RODENBURG ROAD - SOUTH OF METRA TRACKS (VILLAGE OF ROSELLE) (STAGE 1)					268.3	140.4	2,585.2

MODEL: SMODEL\MAMES
FILE NAME: ...3372-Earthwork Schedules.dgn



Two Pierce Place, Suite 1400
Itasca, Illinois 60143
Tel: 630.773.3900 Fax: 630.773.3975
www.civiltechinc.com

DESIGNED - KDC	REVISED - 6/5/2023
DRAWN - KDC	REVISED -
CHECKED - DJK	REVISED -
DATE - 2/28/2023	REVISED -

**VILLAGE OF SCHAUMBURG /
VILLAGE OF ROSELLE**

SCHEDULE OF EARTHWORK

SHEET 1 OF 6 SHEETS

MUN/TR RTE.	SECTION	COUNTY	TOTAL SHEETS	SHEET NO.
0666/0092	18-00132-00-PV	COOK / DUPAGE	177	26
ILLINOIS			CONTRACT NO. 61109	

PLAN	SURVEYED	DATE
	PLOTTED	BY
NOTE BOOK NO.	ALIGNMENT CHECKED	
	FIELD FILE NAME	

PROFILE	SURVEYED	DATE
	PLOTTED	BY
NOTE BOOK NO.	GRADES CHECKED	
	STRUCTURE NOTATIONS CHECKED	

EARTHWORK SUMMARY		SOUTH										SOUTH TOTAL	NORTH						NORTH TOTAL
		STAGE 1		STAGE 2		STAGE 3		STAGE 3A		BIKEPATH			STAGE 2		STAGE 2A		STAGE 3		
LINE		SY	CY	SY	CY	SY	CY	SY	CY	SY	CY	CY	SY	CY	SY	CY	SY	CY	CY
1	PROPOSED TOPSOIL (4")	0	0	5832	648	684	76	276	31	426	47		4269	474	158	18	638	71	
2	TOPSOIL STRIPPING		140		385		131		9		81			748		157		59	
3	TOPSOIL EXCAVATION AND PLACEMENT (EQUAL TO LESSER OF LINE 1 AND LINE 2)		0		385		76		9		47	517		474		18		59	551
4	EXCESS TOPSOIL EXCAVATION AND DISPOSAL (PAID FOR AS REMOVAL AND DISPOSAL OF UNSUITABLE MATERIAL) (LINE 2 MINUS LINE 3)		140		0		55		0		34			274		139		0	
5	REMOVAL AND DISPOSAL OF UNSUITABLE MATERIAL (UNDERCUTS)		1130		0		0		0		0			202		0		0	
6	REMOVAL AND DISPOSAL OF UNSUITABLE MATERIAL (CONTINGENCY)		0		244		0		0		0			643		0		0	
7	TOTAL REMOVAL AND DISPOSAL OF UNSUITABLE MATERIAL (SUM OF LINES 4, 5, AND 6)		1270		244		55		0		34	1603		1119		139		0	1258
8	EXCAVATION (ROADWAY)		268		450		146		120		44			2322		509		889	
9	TOTAL EARTH EXCAVATION (LINE 8)		268		450		146		120		44	1028		2322		509		889	3720
10	EXCAVATION CLASSIFIED AS NON-SPECIAL WASTE NOT AVAILABLE FOR RE-USE				199									864					
11	EARTH EXCAVATION AVAILABLE FOR EMBANKMENT (0.85 TIMES (LINE 9 MINUS LINE 10)		228		214		124		102		37			1239		433		755	
12	EMBANKMENT REQUIRED		2585		1886		44		19		21			4040		17		285	
13	FURNISHED EXCAVATION (LINE 12 MINUS LINE 11)		2357		1672		-80		-83		-16	4029		2800		-416		-471	2800

MODEL: SMODEL\MAMES
FILE NAME: ...3372-Earthwork Schedules.dgn



Two Pierce Place, Suite 1400
Itasca, Illinois 60143
Tel: 630.773.3900 Fax: 630.773.3975
www.civiltechinc.com

DESIGNED - KDC	REVISED - 6/5/2023
DRAWN - KDC	REVISED -
CHECKED - DJK	REVISED -
DATE - 2/28/2023	REVISED -

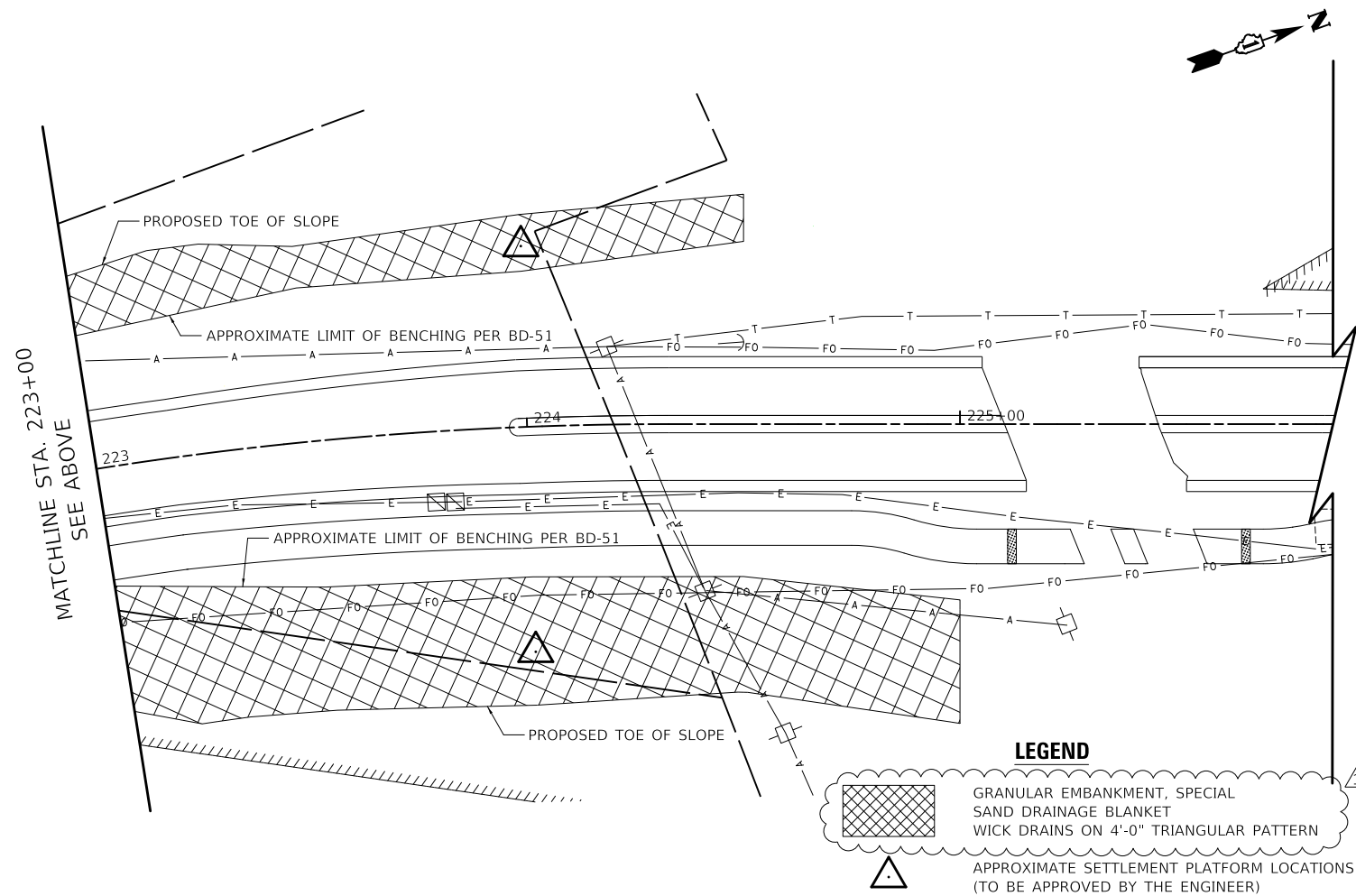
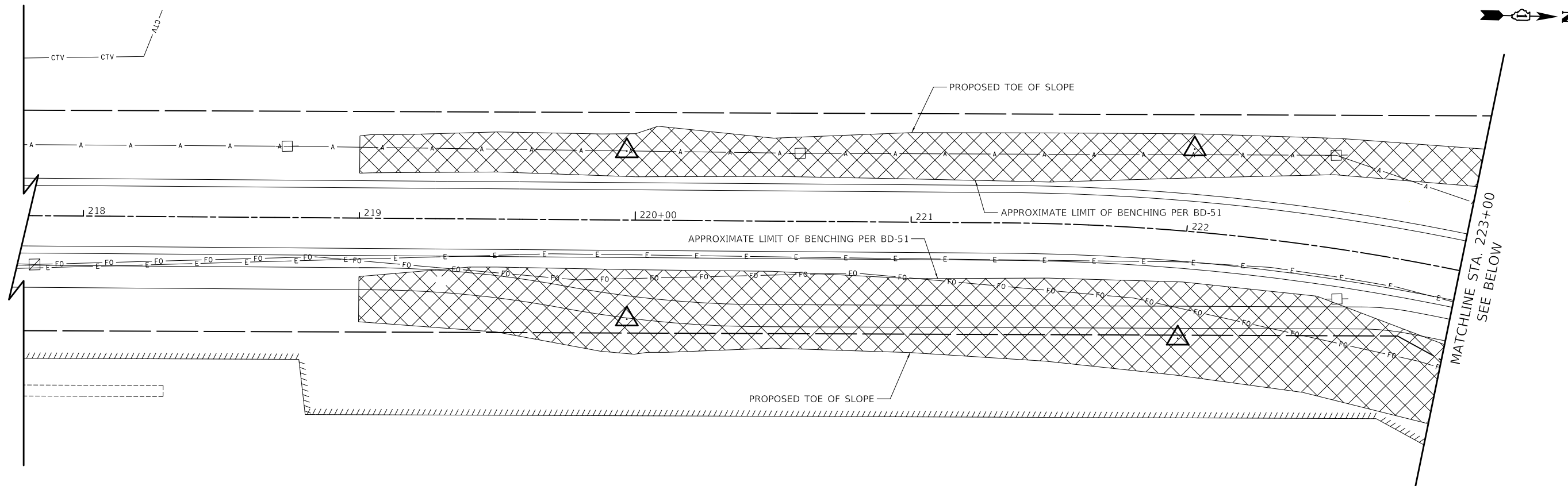
VILLAGE OF SCHAUMBURG /
VILLAGE OF ROSELLE

SCHEDULE OF EARTHWORK

SHEET 6 OF 6 SHEETS

MUN/TR RTE.	SECTION	COUNTY	TOTAL SHEETS	SHEET NO.
0666/0092	18-00132-00-PV	COOK / DUPAGE	177	31
ILLINOIS			CONTRACT NO. 61109	

DATE	
BY	
DESIGNED	
DRAWN	
CHECKED	
DATE	
NO.	



EAST SIDE GROUND IMPROVEMENT LIMITS

STATION	PR TOE OFFSET (RT)
219+00.00	37.6'
219+50.00	41.0'
220+00.00	48.7'
220+50.00	46.1'
221+00.00	47.3'
221+50.00	49.9'
222+00.00	52.3'
222+50.00	53.3'
223+00.00	56.7'
223+50.00	62.4'
224+00.00	64.3'
224+50.00	61.9'
225+00.00	69.1'

WEST SIDE GROUND IMPROVEMENT LIMITS

STATION	PR TOE OFFSET (LT)
219+00.00	29.8'
219+50.00	31.6'
220+00.00	31.4'
220+50.00	30.1'
221+00.00	32.5'
221+50.00	32.9'
222+00.00	35.5'
222+50.00	39.8'
223+00.00	45.0'
223+50.00	45.3'
224+00.00	49.1'
224+50.00	53.1'

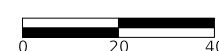
NOTES

- 1) IN THE AREAS WHERE WICK DRAINS WILL BE INSTALLED, THE EXISTING GROUND SHALL BE EXCAVATED TO A DEPTH OF 1 FOOT AND PREPARED ACCORDING TO SECTION 205 OF THE STANDARD SPECIFICATIONS.
- 2) FOLLOWING PREPARATION OF THE EXISTING GROUND, A WORKING PLATFORM AND SAND DRAINAGE BLANKET SHALL BE PLACED WITHIN THE LIMITS DETAILED ON THIS SHEET AND THE CROSS-SECTIONS. SEE DETAIL ON SHEET 62.
- 3) THE CONTRACTOR SHALL INSTALL THE WICK DRAINS THROUGH THE WORKING PLATFORM AGGREGATE AND SAND DRAINAGE BLANKET USING A METHOD ACCEPTABLE TO THE ENGINEER WHICH DOES NOT DAMAGE THE WICK DRAINS. SEE WICK DRAINS SPECIAL PROVISION.
- 4) FOR SETTLEMENT PLATFORM REQUIREMENTS SEE ARTICLE 204.06. SETTLEMENT PLATFORMS SHALL BE USED TO VERIFY THERE IS 1 INCH OR LESS LEFT OF SETTLEMENT AFTER GROUND IMPROVEMENT PRIOR TO BIKE PATH AND ROADWAY CONSTRUCTION.
- 5) FOR WICK DRAIN DETAILS SEE SHEET 62 AND SEE WICK DRAINS SPECIAL PROVISION.
- 6) THE CONTRACTOR SHALL ENSURE POSITIVE DRAINAGE OF THE ROADWAY IS PROVIDED DURING THE SETTLEMENT PERIOD AS PART OF THE EMBANKMENT CONSTRUCTION. THE CONTRACTOR SHALL SUBMIT HIS/HER PLAN TO THE ENGINEER FOR APPROVAL.
- 7) THE EXACT LIMITS AND OFFSETS OF WICK DRAINS AND GROUND IMPROVEMENTS SHALL BE DETERMINED AS PART OF THE CONTRACTOR DESIGN. THE EXISTING VINAKOM BURIED CABLE WILL BE RELOCATED WITHIN THE LIMITS OF PROPOSED WICK DRAINS. THE CONTRACTOR DESIGNED GROUND IMPROVEMENT PLAN SHALL CONSIDER THE LOCATION OF THE RELOCATED VINAKOM CABLE TO AVOID CONFLICTS WITH WICK DRAIN INSTALLATION.

LEGEND

- GRANULAR EMBANKMENT, SPECIAL SAND DRAINAGE BLANKET WICK DRAINS ON 4'-0" TRIANGULAR PATTERN
- APPROXIMATE SETTLEMENT PLATFORM LOCATIONS (TO BE APPROVED BY THE ENGINEER)

SCALE



VILLAGE OF SCHAUMBURG /
VILLAGE OF ROSELLE

GROUND IMPROVEMENT PLANS

SHEET 1 OF 1 SHEETS

MUN/TR RTE.	SECTION	COUNTY	TOTAL SHEETS	SHEET NO.
0666/0092	18-00132-00-PV	COOK / DUPAGE	177	61
			CONTRACT NO. 61J09	

RODENBURG ROAD

MODEL: SMODELNAMEN
FILE NAME: ...3572-Ground Improvements.dgn



Two Pierce Place, Suite 1400
Itasca, Illinois 60143
Tel: 630.773.3900 Fax: 630.773.3975
www.civiltechinc.com

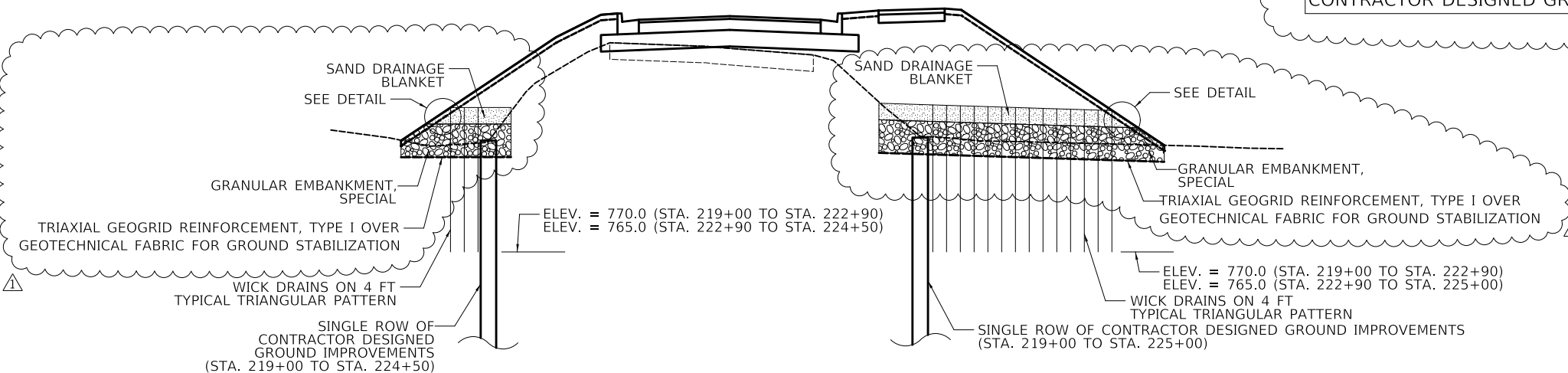
DESIGNED - KDC	REVISED - 6/5/2023
DRAWN - KDC	REVISED -
CHECKED - DJK	REVISED -
DATE - 2/28/2023	REVISED -

ILLINOIS

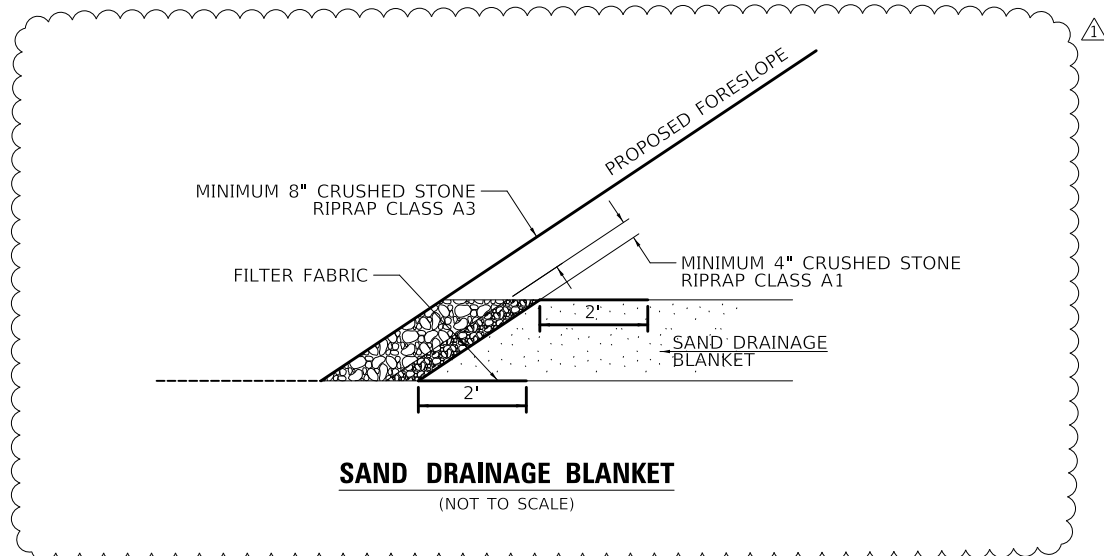
PLAN	SURVEYED	DATE
	PLOTTED	
NOTE BOOK	ALIGNMENT CHECKED	
	CADD FILE NAME	

BILL OF MATERIALS

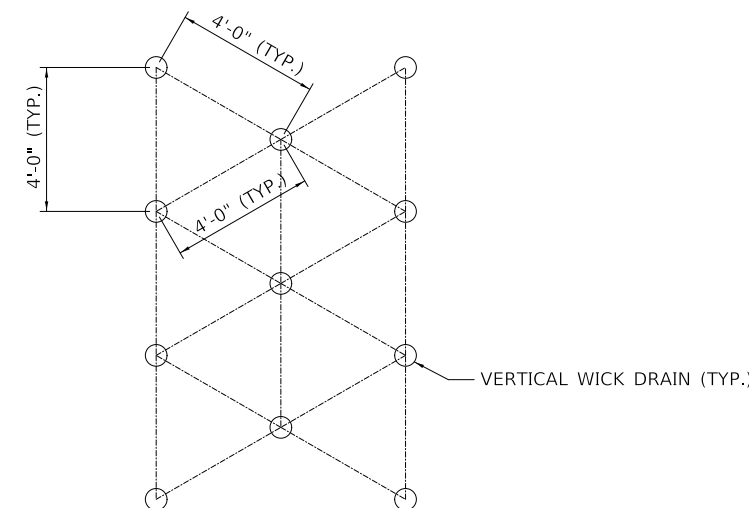
PAY ITEM	UNIT	TOTAL
WICK DRAINS	FEET	32936
SAND DRAINAGE BLANKET	CU YD	929
CLEARING AND GRUBBING	SQ YD	0
GRANULAR EMBANKMENT, SPECIAL	CU YD	1857
GEOTECHNICAL FABRIC FOR GROUND STABILIZATION	SQ YD	2786
TRIAXIAL GEOGRID REINFORCEMENT, TYPE I	SQ YD	2786
SETTLEMENT PLATFORMS	EACH	6
CONTRACTOR DESIGNED GROUND IMPROVEMENT	L. SUM	1



DETAIL - GROUND IMPROVEMENTS - CROSS-SECTION
(NOT TO SCALE)



SAND DRAINAGE BLANKET
(NOT TO SCALE)



WICK DRAIN PATTERN
(NOT TO SCALE)

MODEL: SMODELNAMER
FILE NAME: ...3572-Ground Improvements.dgn



Two Pierce Place, Suite 1400
Itasca, Illinois 60143
Tel: 630.773.3900 Fax: 630.773.3975
www.civiltechinc.com

DESIGNED -	KDC	REVISED	6/5/2023
DRAWN -	KDC	REVISED -	
CHECKED -	DJK	REVISED -	
DATE -	2/28/2023	REVISED -	

**VILLAGE OF SCHAUMBURG /
VILLAGE OF ROSELLE**

GROUND IMPROVEMENT DETAILS

SHEET 1 OF 1 SHEETS STA. 200+88.90 TO STA. 226+00.00

MUN/TR RTE.	SECTION	COUNTY	TOTAL SHEETS	SHEET NO.
0666/0092	18-00132-00-PV	COOK / DUPAGE	177	62
			CONTRACT NO. 61109	

ILLINOIS