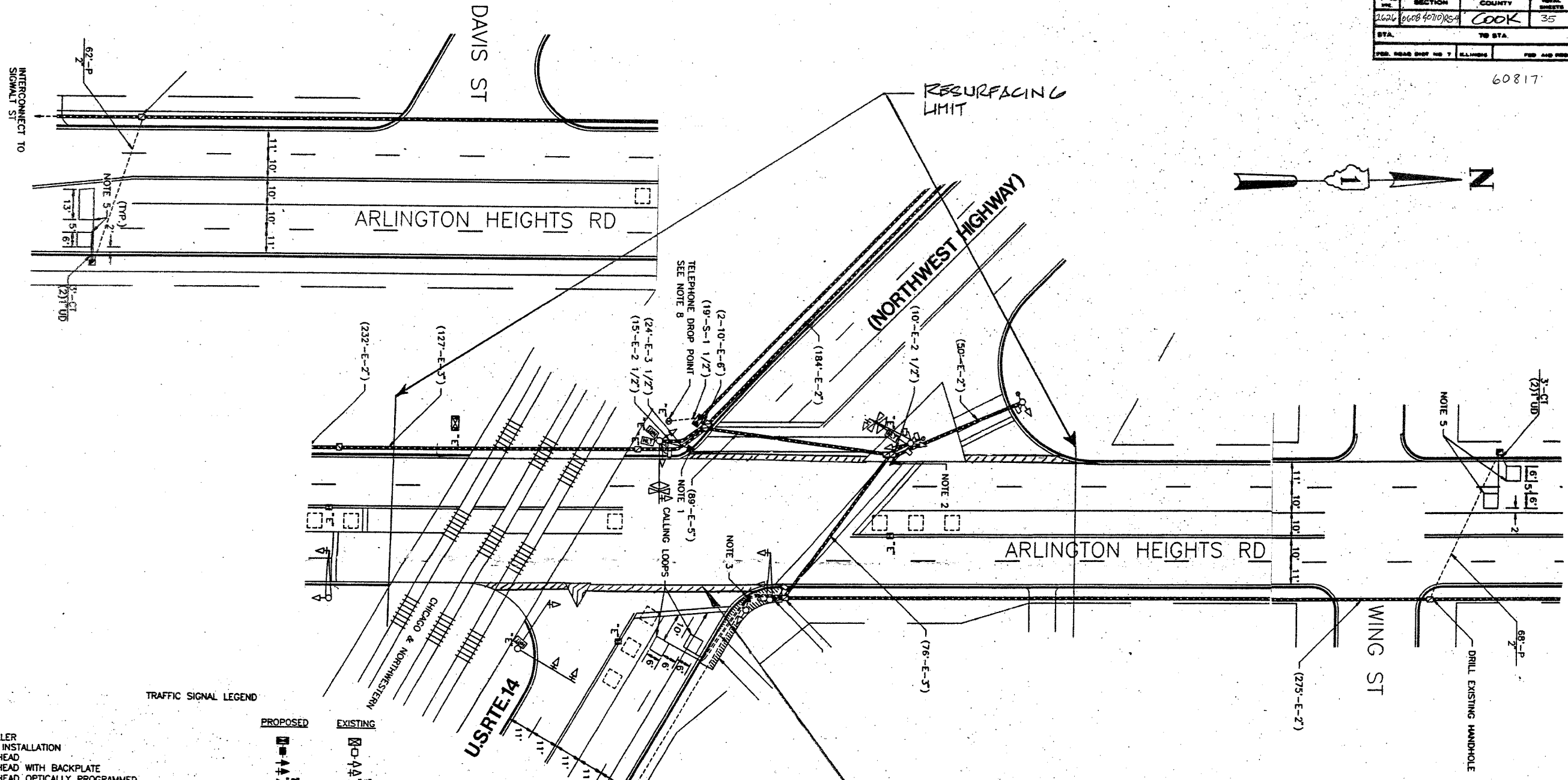


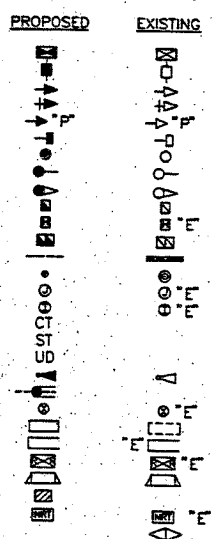
SECTION	COUNTY	TOTAL SHEETS	SHEET NO.
6008 4070 R54	COOK	35	18
STA.	TO STA.		
PDR. ROAD SHOP NO. 7	ILLINOIS	PDR. AND PROJECT	

60817



TRAFFIC SIGNAL LEGEND

- CONTROLLER
- SERVICE INSTALLATION
- SIGNAL HEAD
- SIGNAL HEAD WITH BACKPLATE
- SIGNAL HEAD OPTICALLY PROGRAMMED
- SIGNAL HEAD, PEDESTRIAN
- SIGNAL POST
- MAST ARM ASSEMBLY AND POLE, STEEL
- MAST ARM ASSEMBLY AND POLE, ALUMINUM
- HANDHOLE
- HEAVY DUTY HANDHOLE
- DOUBLE HANDHOLE
- G.S. CONDUIT IN TRENCH OR PUSHED
- PEDESTRIAN PUSHBUTTON DETECTOR
- CONCRETE JUNCTION BOX
- CAST IRON JUNCTION BOX
- COMMON TRENCH
- SPECIAL TRENCH
- UNIT DUCT
- EMERGENCY VEHICLE SYSTEM DETECTOR
- CONDUIT SPLICE
- WOOD POLE
- DETECTOR LOOP
- RACEWAY FOR MAGNETIC DETECTOR, TYPE I OR TYPE II
- RAILROAD CONTROL CABINET
- SIDEWALK RAMPS
- PUSH PITS
- ILLUMINATED SIGN, FIBER OPTIC TYPE
- CONFIRMATION BEACON



REPLACE ALL DETECTOR LOOPS AS SHOWN
(WITHIN THE RESURFACING LIMITS)

CODE NO.	QUANTITY	UNIT	ITEM
04700000	260	Foot	Detector Loop Replacement

NOTE:
THIS PLAN IS FOR THE PURPOSE OF REPLACING THE DETECTOR LOOPS ONLY. ALL OTHER INFORMATION SHOWN IS NOT RELATED AND WILL BE DISREGARDED.

ILLINOIS DEPARTMENT OF TRANSPORTATION
DETECTOR LOOP REPLACEMENT

ARLINGTON HGTS. RD @ U.S. RTE. 14

SCALE: 1" = 20'
DATE: JUNE 2000

DRAWN BY: JJE
DESIGNED BY: JJE
CHECKED BY: DAD

REVISIONS	
NAME	DATE