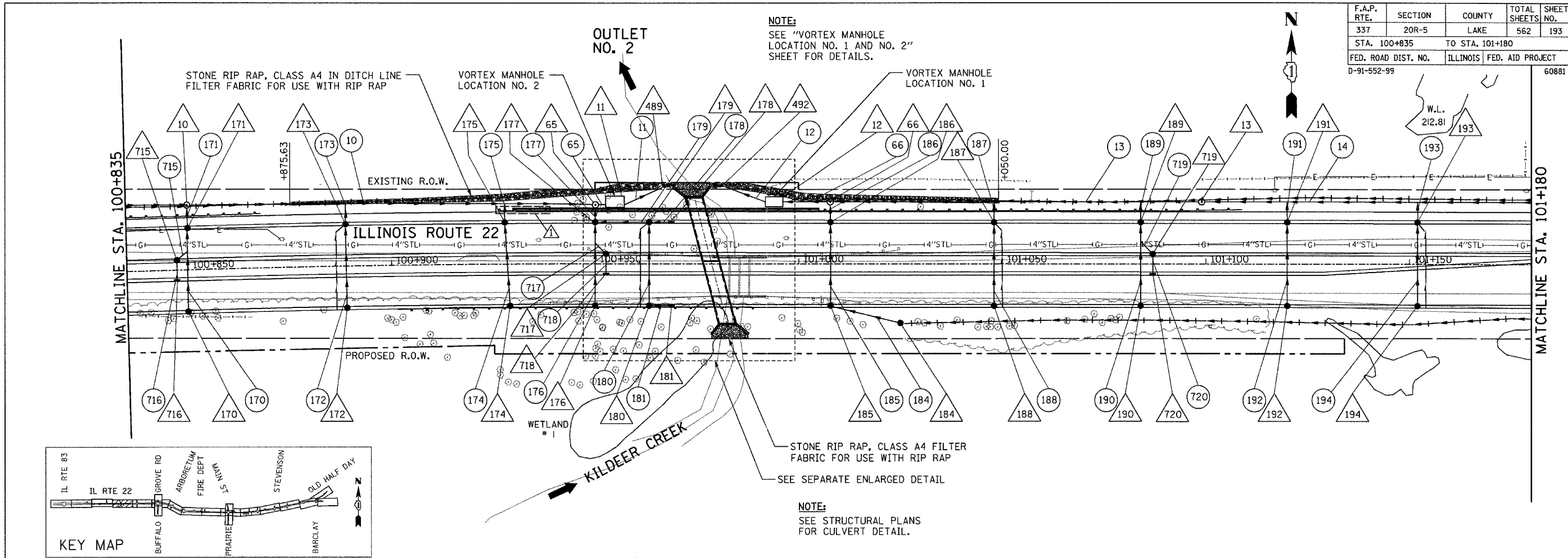


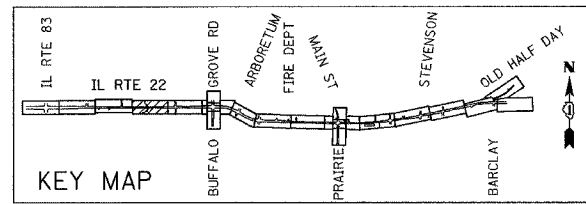
F.A.P. RTE.	SECTION	COUNTY	TOTAL SHEETS	SHEET NO.
337	20R-5	LAKE	562	193
STA. 100+835		TO STA. 101+180		
FED. ROAD DIST. NO.		ILLINOIS FED. AID PROJECT		
D-91-552-99		60881		



NOTE:
SEE "VORTEX MANHOLE LOCATION NO. 1 AND NO. 2" SHEET FOR DETAILS.

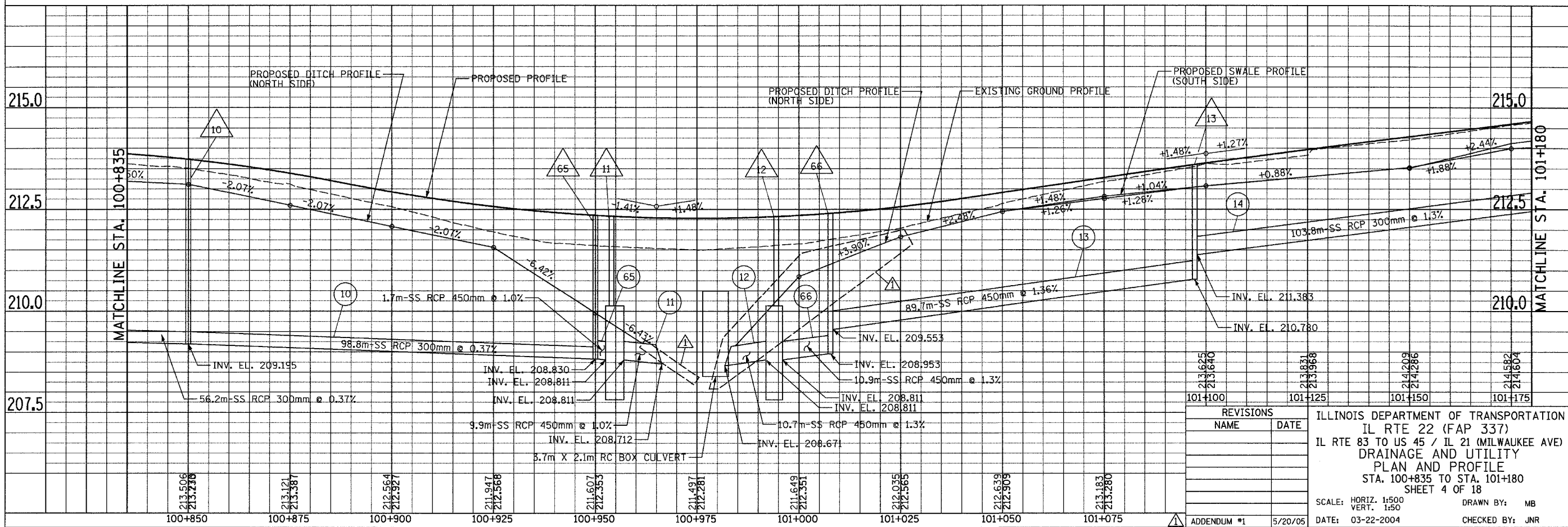


BY	DATE
FINAL SURVEY PLOTTED	
NOTE BOOK TEMPLATE	
AREAS CHECKED	
NO.	



NOTE:
SEE SEPARATE ENLARGED DETAIL FOR CULVERT DETAIL.

BY	DATE
ORIGINAL SURVEY PLOTTED	
NOTE BOOK TEMPLATE	
AREAS CHECKED	
NO.	



REVISIONS	
NAME	DATE

101+100	213.625
101+125	213.640
101+150	213.671
101+175	214.686
	214.582
	214.604

ILLINOIS DEPARTMENT OF TRANSPORTATION
IL RTE 22 (FAP 337)
IL RTE 83 TO US 45 / IL 21 (MILWAUKEE AVE)
DRAINAGE AND UTILITY
PLAN AND PROFILE
STA. 100+835 TO STA. 101+180
SHEET 4 OF 18

SCALE: HORIZ. 1:500
VERT. 1:50

DATE: 03-22-2004

DRAWN BY: MB
CHECKED BY: JNR