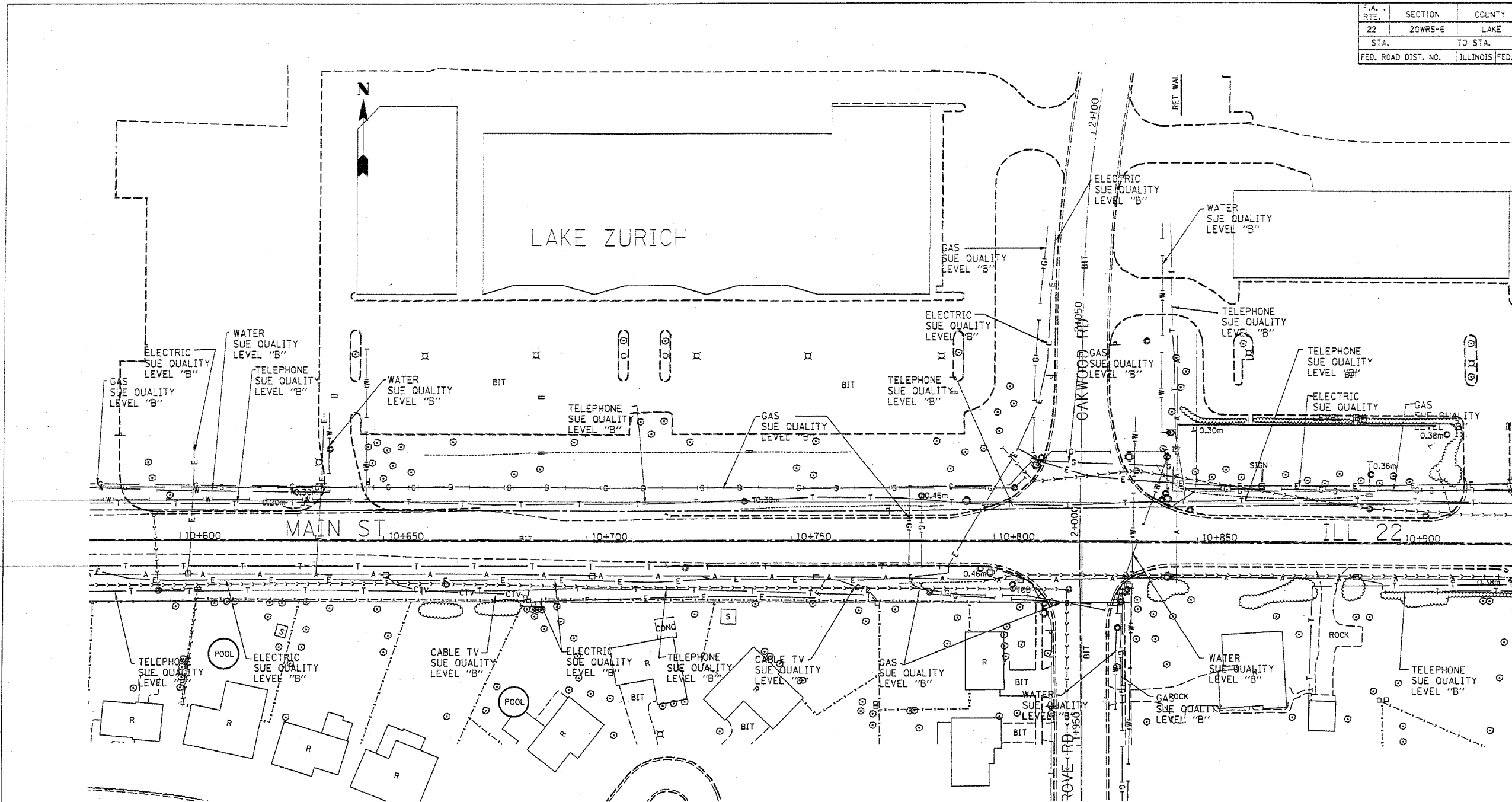


F.A. RTE.	SECTION	COUNTY	TOTAL SHEETS	SHEET NO.
22	20WR5-6	LAKE	318	108
STA.	TO STA.			
FED. ROAD DIST. NO.	ILLINOIS FED. AID PROJECT			




— T — T —	TELEPHONE
— W — W —	WATER
— G — G —	GAS
— CTV — CTV —	CABLE TELEVISION
— FO — FO —	FIBER OPTIC
— E — E —	ELECTRIC

**TBE GROUP, INC.**  
 CIVIL ENGINEERING \* TRANSPORTATION \* ENVIRONMENTAL  
 \* PLANNING \* UTILITY ENGINEERING/LOCATING  
 SOUTHERN REGION: FL, GA, SC, NC  
 NORTHERN REGION: IL, IN, MI, OH, MD, NJ, NY  
 PA, VA, CANADA  
 WESTERN REGION: AZ, NV, NM, TX, CA, OR, UT, WA

IL09500126  
 TBE SUE PAGE NO: 3 of 11  
 Signature *Sandra Jones*  
 SUE Quality Level "A" : Test Holes  
 SUE Quality Level "B" : Designating

Utilities shown on these plans as depicted in the legend have been investigated by TBE Group, Inc in accordance with SUE Industry Standards as of 4/16/02.  
 All other information shown has been provided to TBE Group, Inc by others.

 205 W. WACKER DRIVE SUITE 1020 CHICAGO, IL 60606 (312) 704-1970	REVISIONS		ILLINOIS DEPARTMENT OF TRANSPORTATION  SUE Investigation of Underground Utilities IL RT.22 E. of Beusching Rd. to Queen Rd.  SCALE : 500 SOL "B" DATE : 4/16/02
	NAME	DATE	
DRAWN BY : JAC		CHECKED BY :	