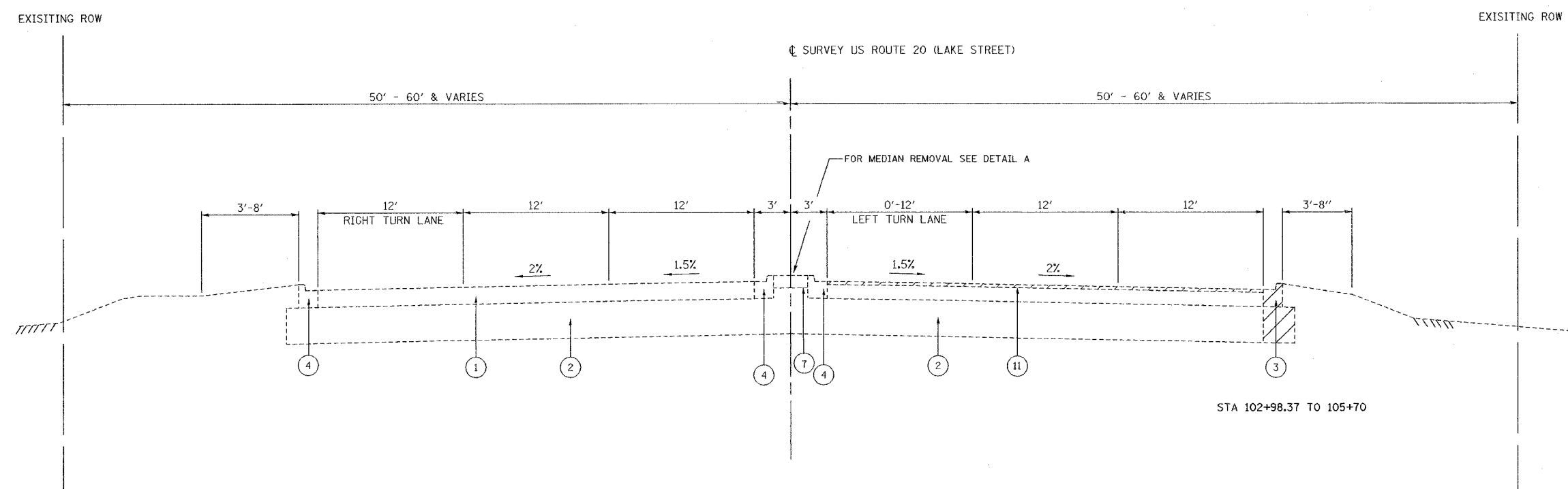
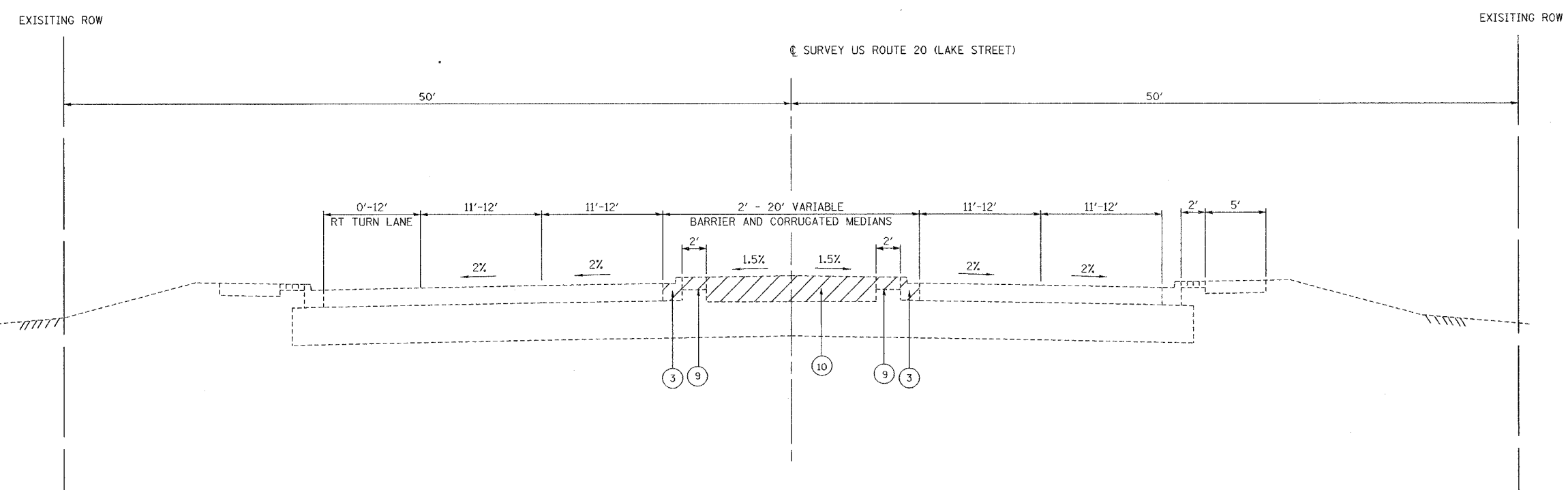


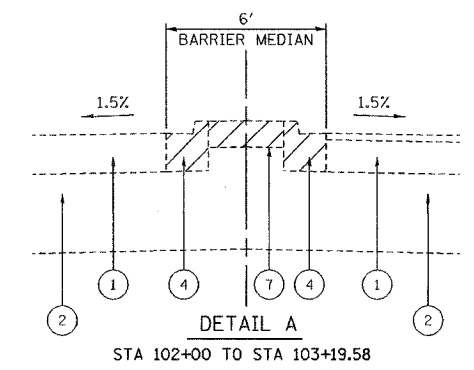
F.A.P. RTE.	SECTION	COUNTY	TOTAL SHEETS	SHEET NO.
3537	5Y-R-4	DUPAGE	39	19
FED. ROAD DIST. NO. 1		ILLINOIS FED. AID PROJECT		
CONTRACT NO. 62295				



EXISTING TYPICAL SECTION
US ROUTE 20 (LAKE STREET)
STA 99+70 TO 105+70



EXISTING TYPICAL SECTION
US ROUTE 20 (LAKE STREET)
STA 224+90 TO 228+50



- LEGEND US ROUTE 20 (LAKE STREET)
1. EXISTING BITUMINOUS SURFACING 3" & VARIES
 2. EXISTING P.C.C. PAVEMENT 9", TYPE B
 3. EXISTING CONC. CURB & GUTTER, TYPE B-6.24
 4. EXISTING CONC. CURB & GUTTER, TYPE B-6.12
 5. EXISTING GRAVEL SHOULDER
 6. EXISTING BITUMINOUS SHOULDER
 7. EXISTING CONC. MEDIAN SURFACE
 8. EXISTING INTERMITTENT CONCRETE SIDEWALK
 9. EXISTING INTERMITTENT BRICK WALK
 10. EXISTING GRASS MEDIAN
 11. EXISTING BITUMINOUS SURFACE 1-1/2"
- REMOVAL ITEM

REVISIONS	
NAME	DATE

ILLINOIS DEPARTMENT OF TRANSPORTATION

TYPICAL CROSS SECTIONS
US ROUTE 20 (LAKE STREET)

SCALE: NONE
DATE: 03/01/05

DRAWN BY: ALS
CHECKED BY: JAR

J:\Illinois\171464_us20\sheet1464px101-1b.dwg