

F.A.P. RTE.	SECTION	COUNTY	TOTAL SHEETS	SHEET NO.
3537	5Y-R-4	DUPAGE	392	65
STA	TO STA			
FED. ROAD DIST NO. 1	ILLINOIS	FED. AID PROJECT		
CONTRACT NO. 62295				

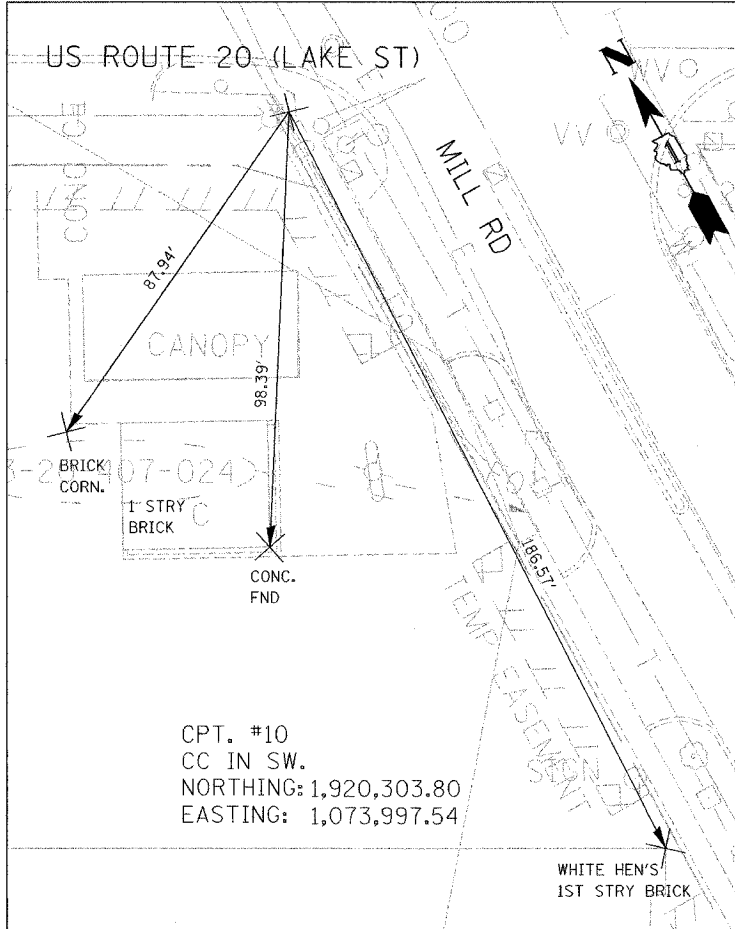
NOTE:
TIES TAKEN
FROM CONC.
BLOCK

03-21-303

LONG JOHN
SILVERS
(ABANDONED)
CONC. BLOCK

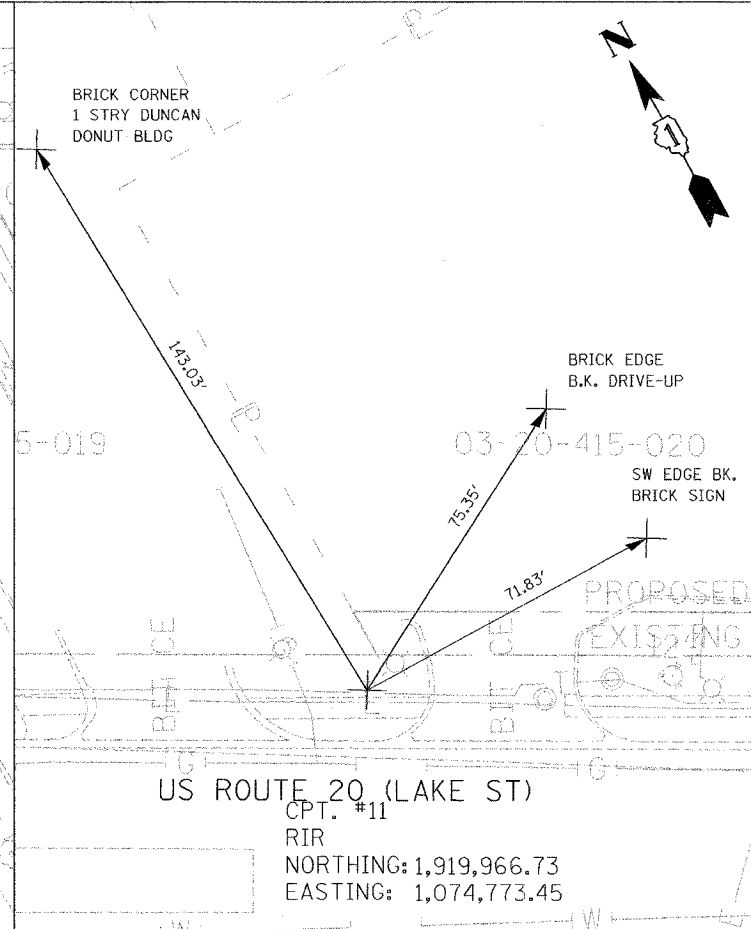
US ROUTE 20 (LAKE ST)

CPT. #13
RIR
NORTHING: 1,919,477.29
EASTING: 1,075,646.76

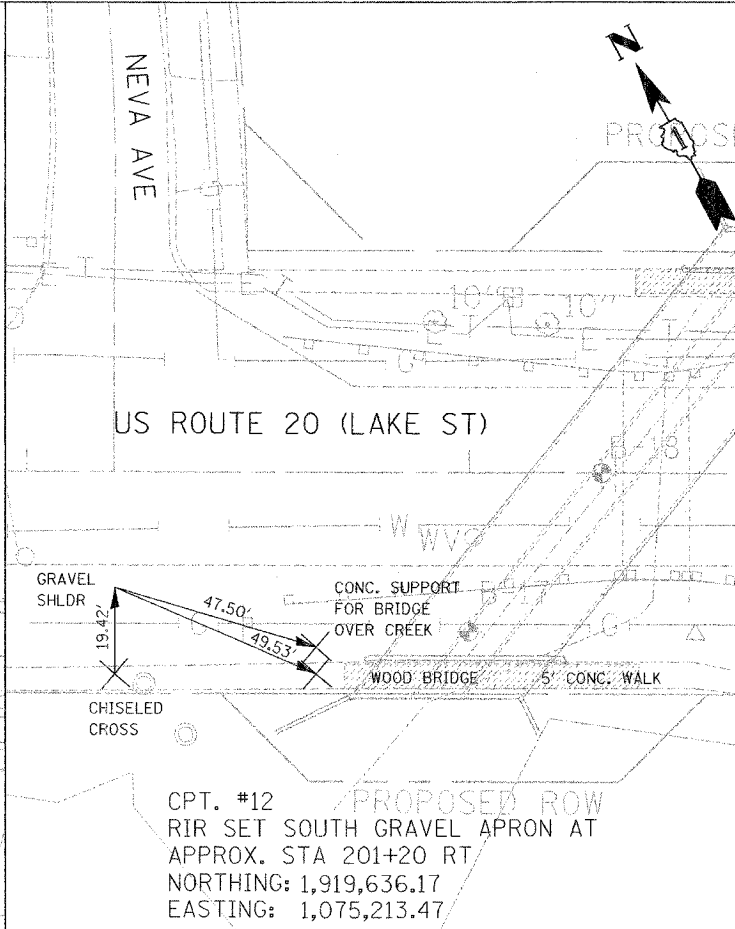


CPT. #10
CC IN SW.
NORTHING: 1,920,303.80
EASTING: 1,073,997.54

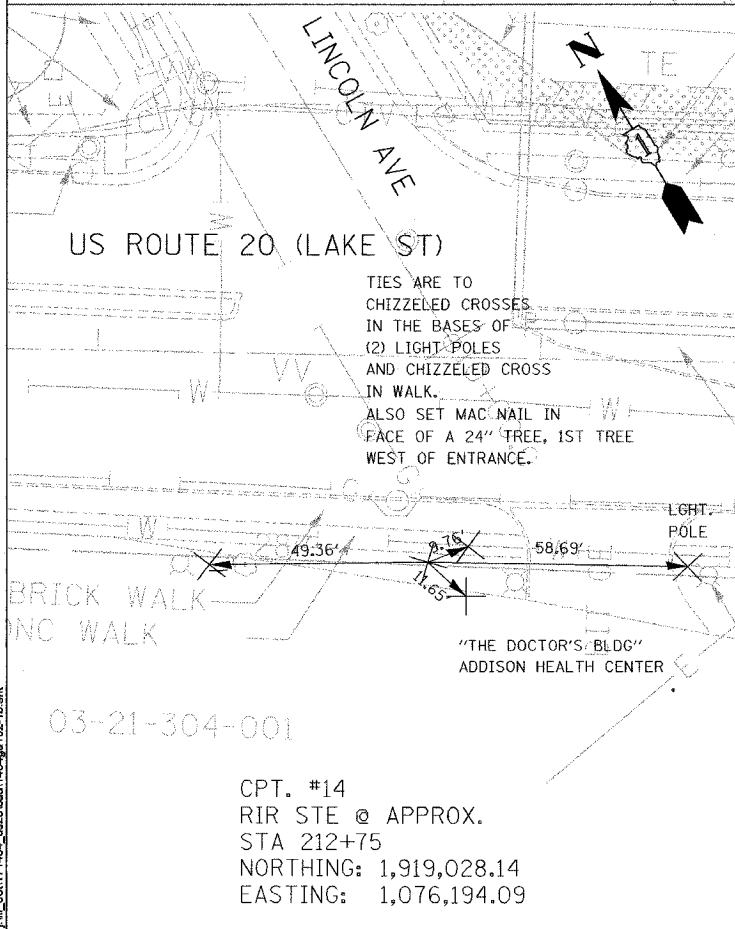
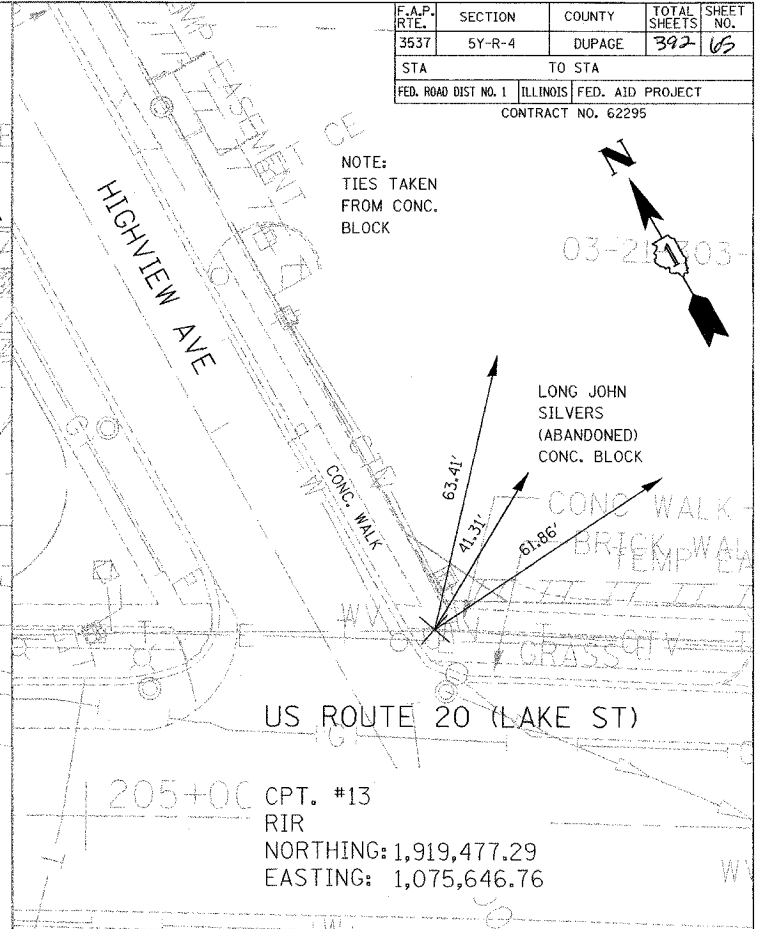
WHITE HEN'S
1ST STRY BRICK



US ROUTE 20 (LAKE ST)
CPT. #11
RIR
NORTHING: 1,919,966.73
EASTING: 1,074,773.45

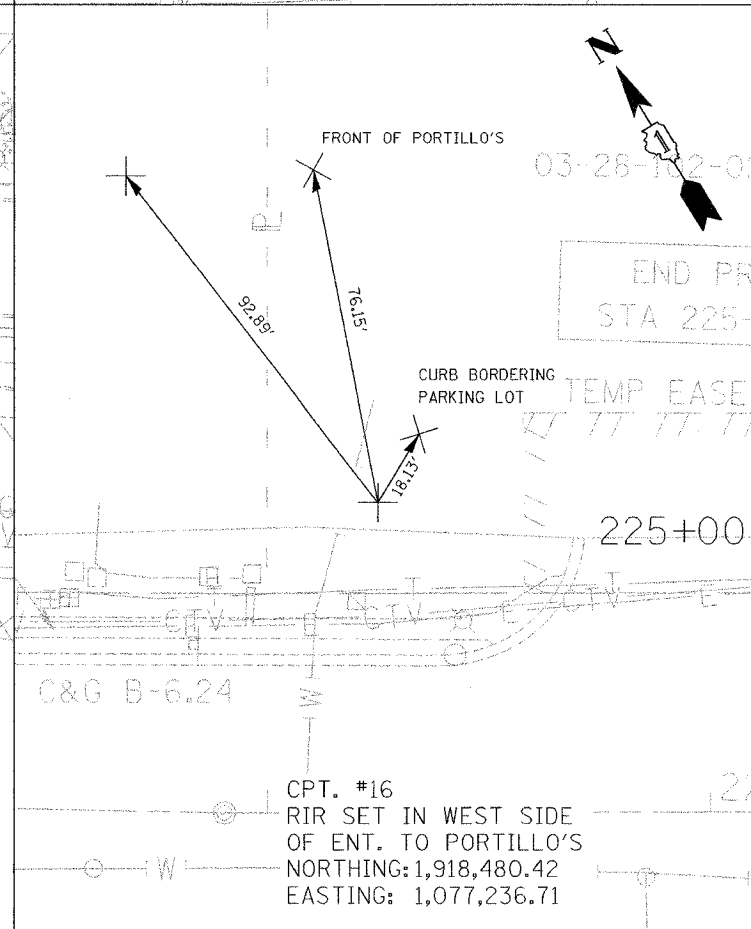


CPT. #12
RIR SET SOUTH GRAVEL APRON AT
APPROX. STA 201+20 RT
NORTHING: 1,919,636.17
EASTING: 1,075,213.47

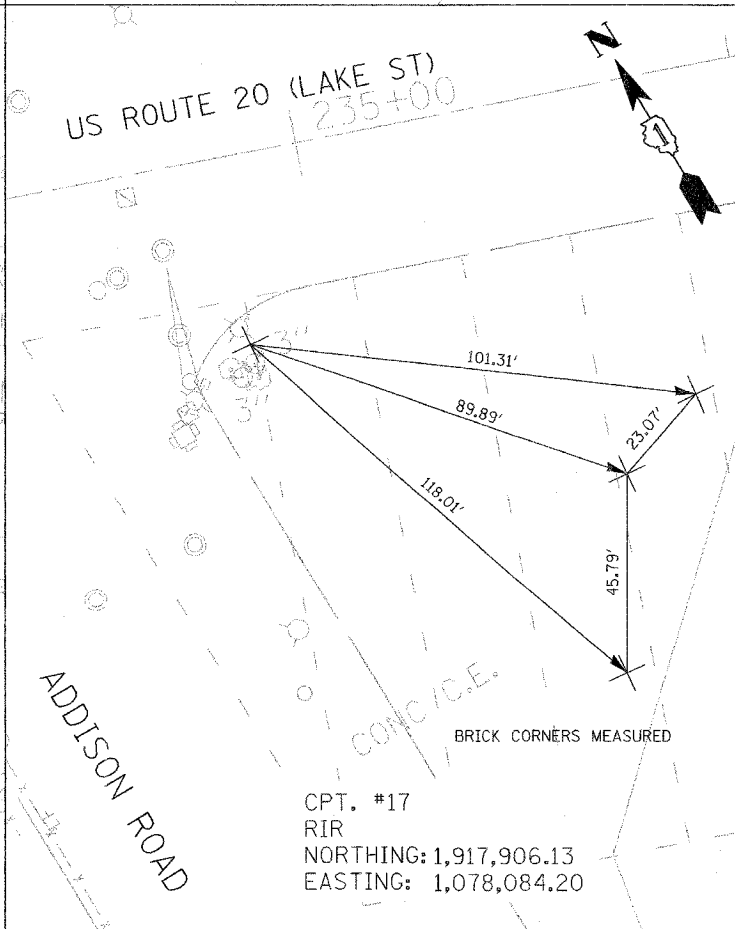


CPT. #14
RIR STE @ APPROX.
STA 212+75
NORTHING: 1,919,028.14
EASTING: 1,076,194.09

"THE DOCTOR'S BLDG"
ADDISON HEALTH CENTER

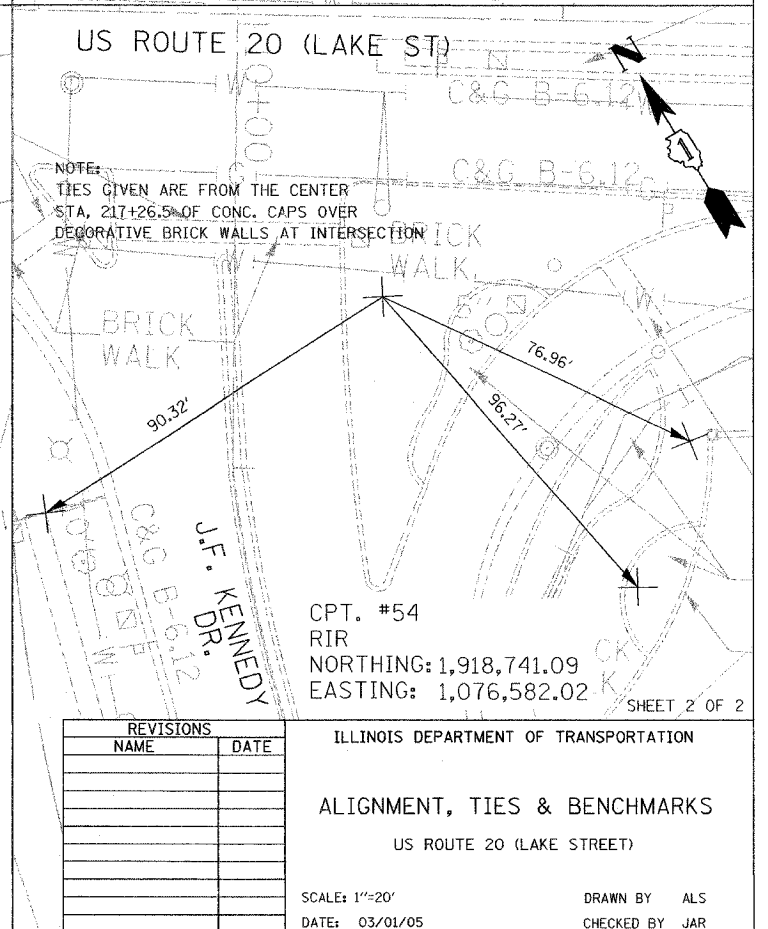


CPT. #16
RIR SET IN WEST SIDE
OF ENT. TO PORTILLO'S
NORTHING: 1,918,480.42
EASTING: 1,077,236.71



CPT. #17
RIR
NORTHING: 1,917,906.13
EASTING: 1,078,084.20

BRICK CORNERS MEASURED



CPT. #54
RIR
NORTHING: 1,918,741.09
EASTING: 1,076,582.02

REVISIONS	
NAME	DATE

ILLINOIS DEPARTMENT OF TRANSPORTATION
ALIGNMENT, TIES & BENCHMARKS
US ROUTE 20 (LAKE STREET)

SCALE: 1"=20'
DATE: 03/01/05

DRAWN BY ALS
CHECKED BY JAR

SHEET 2 OF 2

J:\11_00\1171464_us20\cad\1464.dwg 102:1b.sht