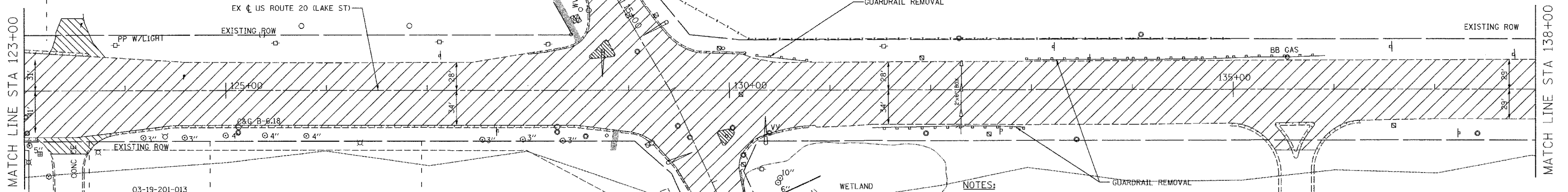




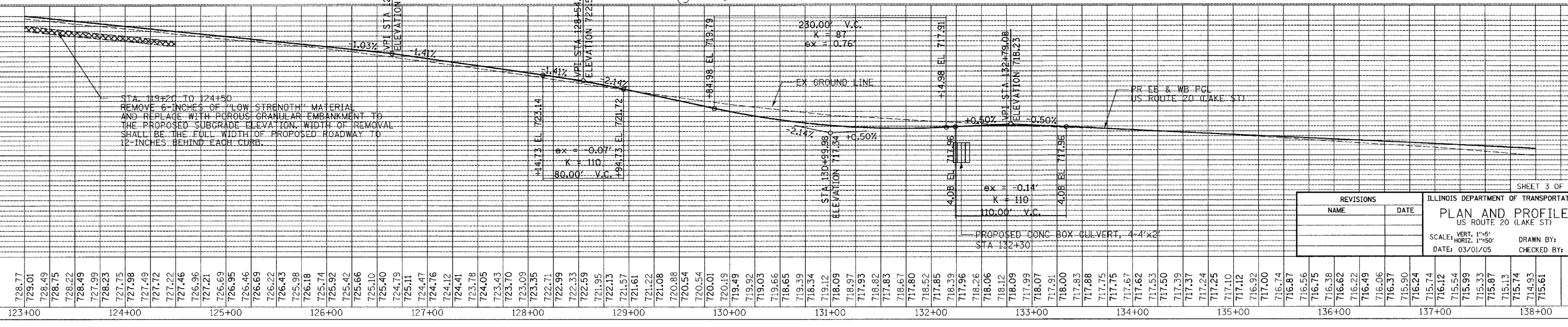
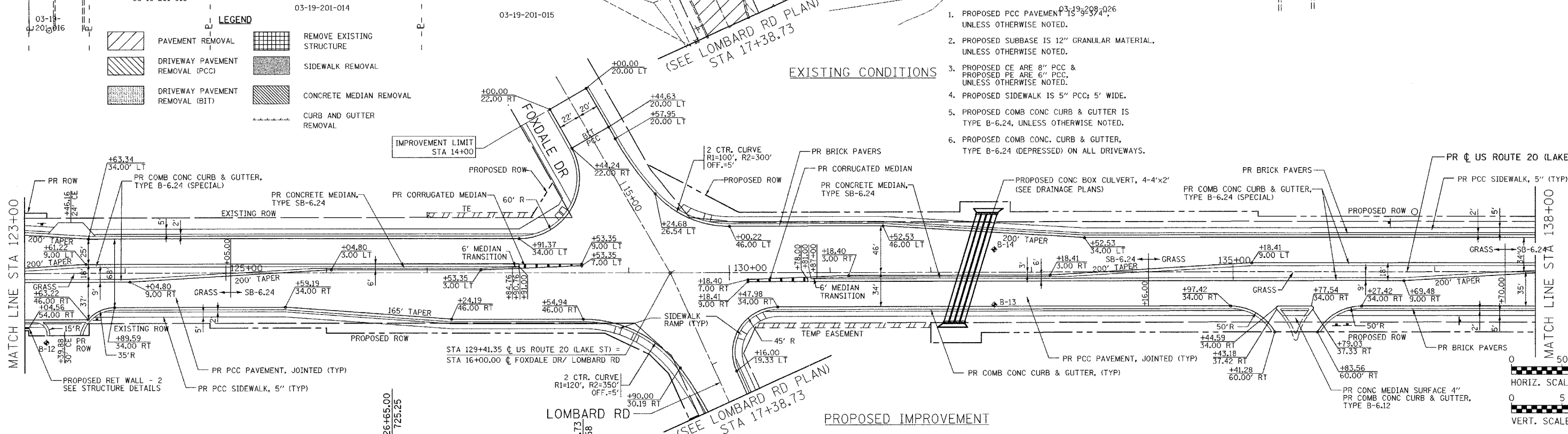
03-19-200-013



LEGEND

	PAVEMENT REMOVAL		REMOVE EXISTING STRUCTURE
	DRIVEWAY PAVEMENT REMOVAL (PCC)		SIDEWALK REMOVAL
	DRIVEWAY PAVEMENT REMOVAL (BIT)		CONCRETE MEDIAN REMOVAL
			CURB AND GUTTER REMOVAL

- NOTES:**
1. PROPOSED PCC PAVEMENT IS 9'-3" WIDE UNLESS OTHERWISE NOTED.
 2. PROPOSED SUBBASE IS 12" GRANULAR MATERIAL, UNLESS OTHERWISE NOTED.
 3. PROPOSED CE ARE 8" PCC & PROPOSED PE ARE 6" PCC, UNLESS OTHERWISE NOTED.
 4. PROPOSED SIDEWALK IS 5" PCC; 5' WIDE.
 5. PROPOSED COMB CONC CURB & GUTTER IS TYPE B-6.24, UNLESS OTHERWISE NOTED.
 6. PROPOSED COMB CONC. CURB & GUTTER, TYPE B-6.24 (DEPRESSED) ON ALL DRIVEWAYS.



REVISIONS		DATE
NAME		

ILLINOIS DEPARTMENT OF TRANSPORTATION
PLAN AND PROFILE
 US ROUTE 20 (LAKE ST)
 SCALE: VERT. 1"=5'
 HORIZ. 1"=50'
 DATE: 03/01/05
 DRAWN BY: ALS
 CHECKED BY: SR

SHEET 3 OF 14

DATE: _____

BY: _____

PLAN

DATE: _____

BY: _____

PROFILE

DATE: _____

BY: _____

PLAN

DATE: _____

BY: _____

PROFILE

FILE: d:\dot171464_us20\cad1464cr10-1b.sht