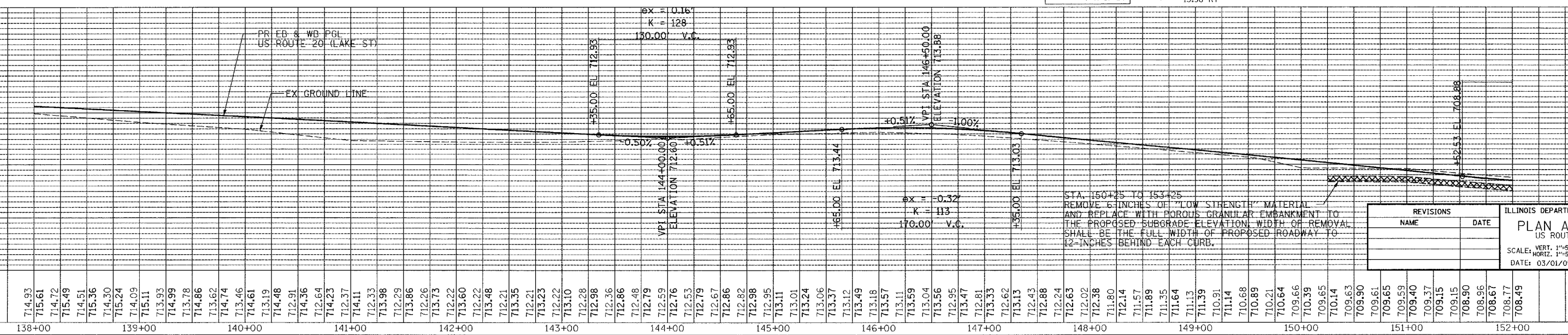


- NOTES:**
1. PROPOSED PCC PAVEMENT IS 9-3/4", UNLESS OTHERWISE NOTED.
 2. PROPOSED SUBBASE IS 12" GRANULAR MATERIAL, UNLESS OTHERWISE NOTED.
 3. PROPOSED CE ARE 8" PCC & PROPOSED PE ARE 6" PCC, UNLESS OTHERWISE NOTED.
 4. PROPOSED SIDEWALK IS 5" PCC; 5' WIDE.
 5. PROPOSED COMB CONC CURB & GUTTER IS TYPE B-6.24, UNLESS OTHERWISE NOTED.
 6. PROPOSED COMB CONC. CURB & GUTTER, TYPE B-6.24 (DEPRESSED) ON ALL DRIVEWAYS.

LEGEND

	PAVEMENT REMOVAL		REMOVE EXISTING STRUCTURE
	DRIVEWAY PAVEMENT REMOVAL (PCC)		SIDEWALK REMOVAL
	DRIVEWAY PAVEMENT REMOVAL (BIT)		CONCRETE MEDIAN REMOVAL
	CURB AND GUTTER REMOVAL		



REVISIONS	
NAME	DATE

ILLINOIS DEPARTMENT OF TRANSPORTATION
PLAN AND PROFILE
 US ROUTE 20 (LAKE ST)
 SCALE: VERT. 1"=5'
 HORIZ. 1"=50'
 DATE: 03/01/05
 DRAWN BY: ALS
 CHECKED BY: SR

PLOTTED: []
 ALIGNED: []
 CHECKED: []
 NOTE BOOK NO. []
 FILE NAME: []
 STRUCTURE: []
 NOTATIONS: []

PLOTTED: []
 CHECKED: []
 NOTE BOOK NO. []
 FILE NAME: []