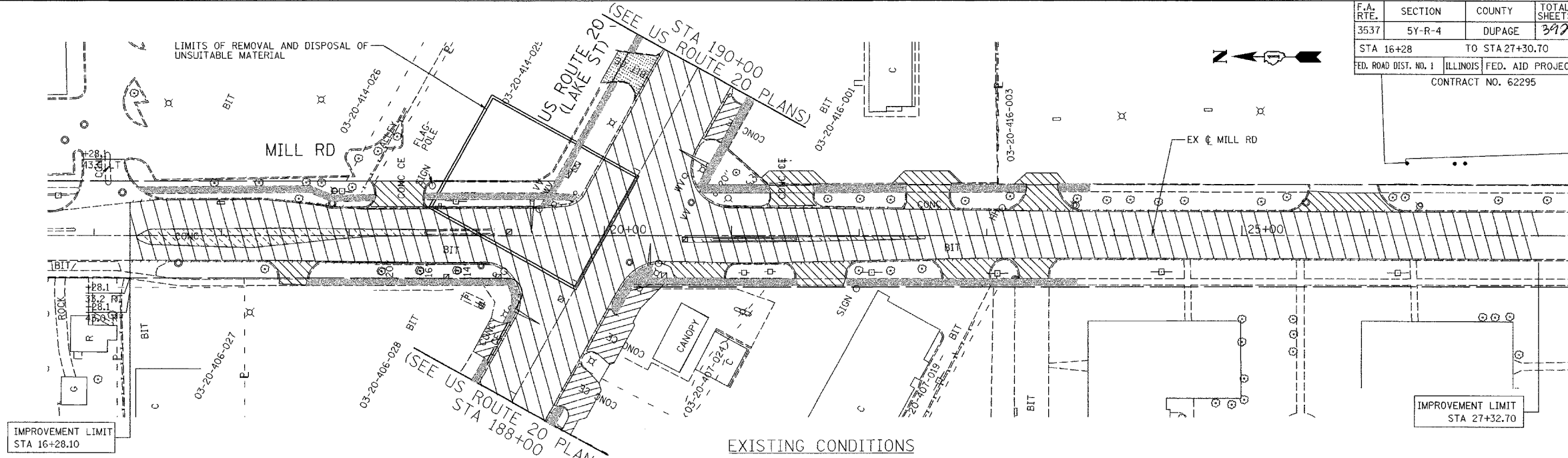




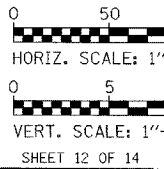
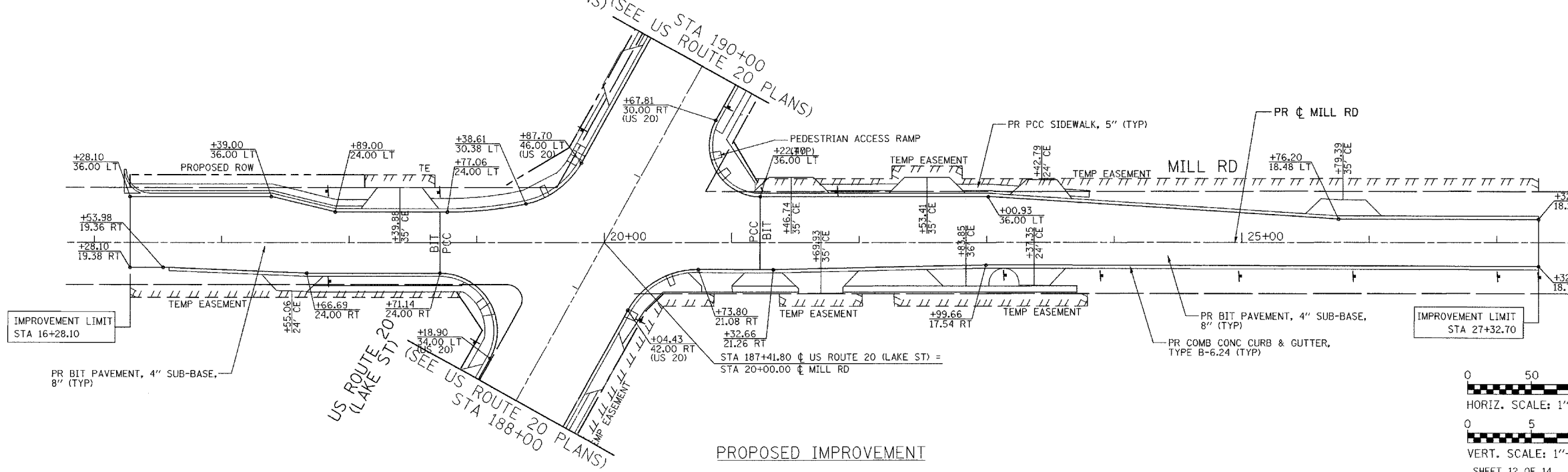
DATE	BY
DATE	BY
DATE	BY

- NOTES:
1. PROPOSED PCC PAVEMENT IS 9-3/4", UNLESS OTHERWISE NOTED.
 2. PROPOSED SUBBASE IS 12" GRANULAR MATERIAL, UNLESS OTHERWISE NOTED.
 3. PROPOSED CE ARE 8" PCC & PROPOSED PE ARE 6" PCC, UNLESS OTHERWISE NOTED.
 4. PROPOSED SIDEWALK IS 5" PCC & 5' WIDE.
 5. PROPOSED COMB CONC CURB & GUTTER IS TYPE B-6.24, UNLESS OTHERWISE NOTED.
 6. PROPOSED COMB CONC. CURB & GUTTER, TYPE B-6.24 (DEPRESSED) ON ALL DRIVEWAYS.

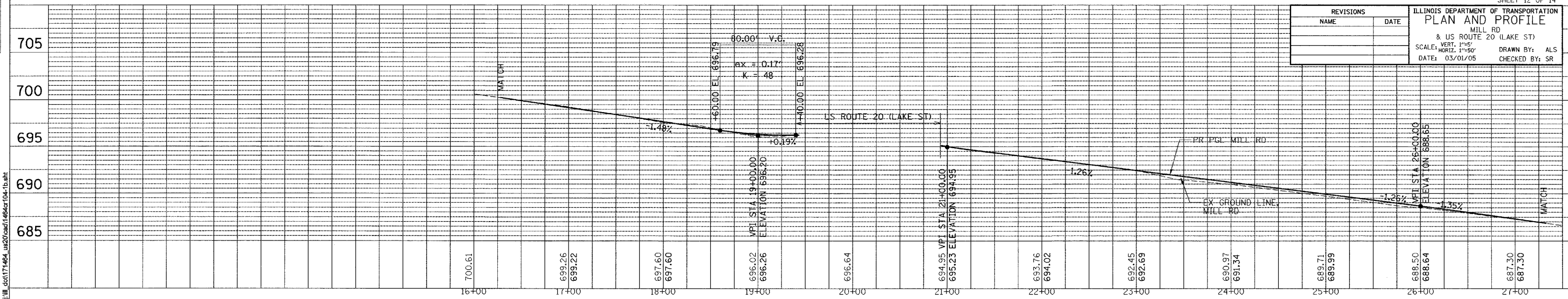


LEGEND

	PAVEMENT REMOVAL		REMOVE EXISTING STRUCTURE
	DRIVEWAY PAVEMENT REMOVAL (PCC)		SIDEWALK REMOVAL
	DRIVEWAY PAVEMENT REMOVAL (BIT)		CONCRETE MEDIAN REMOVAL
			CURB AND GUTTER REMOVAL



DATE	BY
DATE	BY
DATE	BY



REVISIONS		ILLINOIS DEPARTMENT OF TRANSPORTATION PLAN AND PROFILE MILL RD & US ROUTE 20 (LAKE ST) SCALE: HORIZ. 1"=50' DATE: 03/01/05
NAME	DATE	
		DRAWN BY: ALS CHECKED BY: SR