



DATE	BY
DATE	BY
DATE	BY

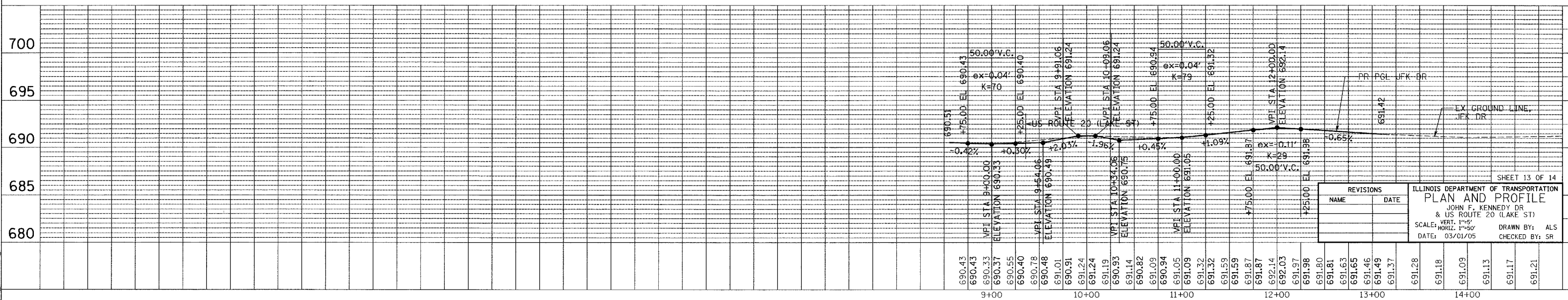
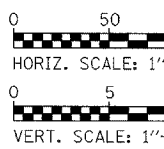
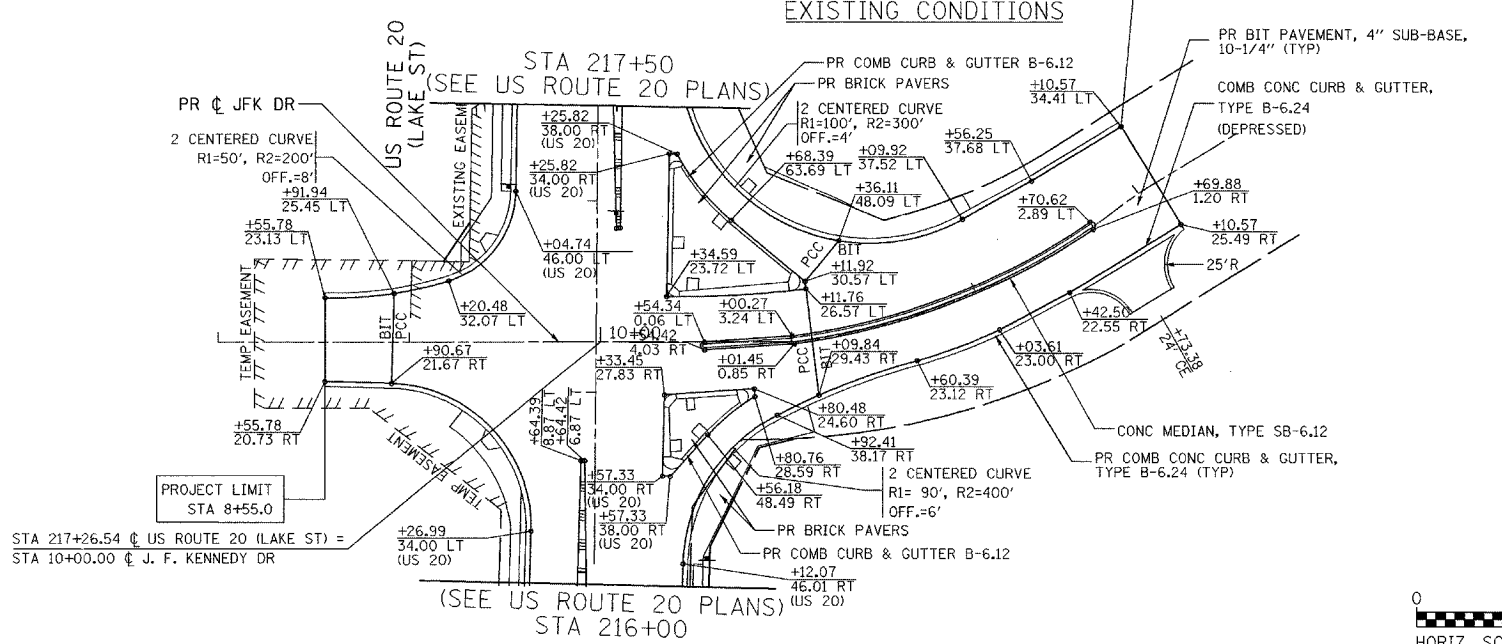
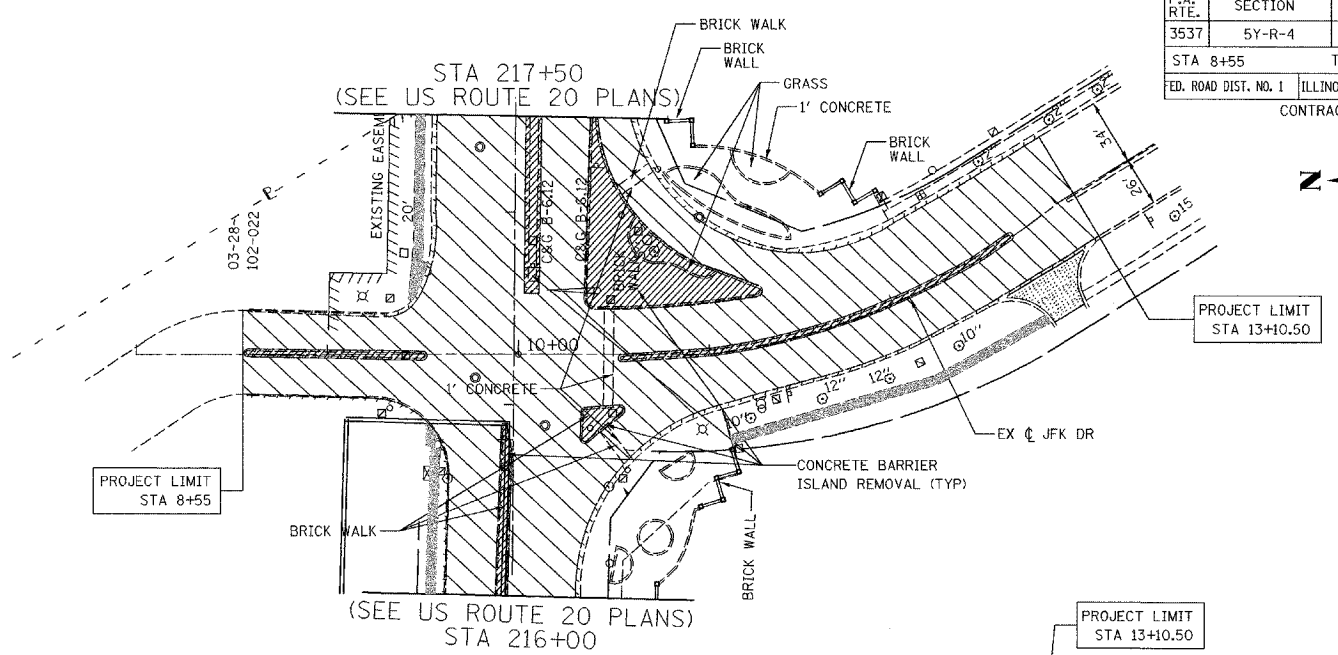
DATE	BY
DATE	BY
DATE	BY

PLAN
 SURVEYED
 ALIGNMENT CHECKED
 P.T. OF WAY CHECKED
 PAID FILE NAME
 NO.

LEGEND

	PAVEMENT REMOVAL		REMOVE EXISTING STRUCTURE
	DRIVEWAY PAVEMENT REMOVAL (PCC)		SIDEWALK REMOVAL
	DRIVEWAY PAVEMENT REMOVAL (BIT)		CONCRETE MEDIAN REMOVAL
	CURB AND GUTTER REMOVAL		

- NOTES:**
1. PROPOSED PCC PAVEMENT IS 9-3/4", UNLESS OTHERWISE NOTED.
 2. PROPOSED SUBBASE IS 12" GRANULAR MATERIAL, UNLESS OTHERWISE NOTED.
 3. PROPOSED CE ARE 8" PCC & PROPOSED PE ARE 6" PCC, UNLESS OTHERWISE NOTED.
 4. PROPOSED SIDEWALK IS 5" PCC; 5' WIDE.
 5. PROPOSED COMB CONC CURB & GUTTER IS TYPE B-6.24, UNLESS OTHERWISE NOTED.
 6. PROPOSED COMB CONC. CURB & GUTTER, TYPE B-6.24 (DEPRESSED) ON ALL DRIVEWAYS.



REVISIONS	
NAME	DATE

ILLINOIS DEPARTMENT OF TRANSPORTATION
 PLAN AND PROFILE
 JOHN F. KENNEDY DR
 & US ROUTE 20 (LAKE ST)
 SCALE: VERT. 1"=5'
 HORIZ. 1"=50'
 DATE: 03/01/05
 DRAWN BY: ALS
 CHECKED BY: SR