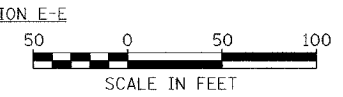
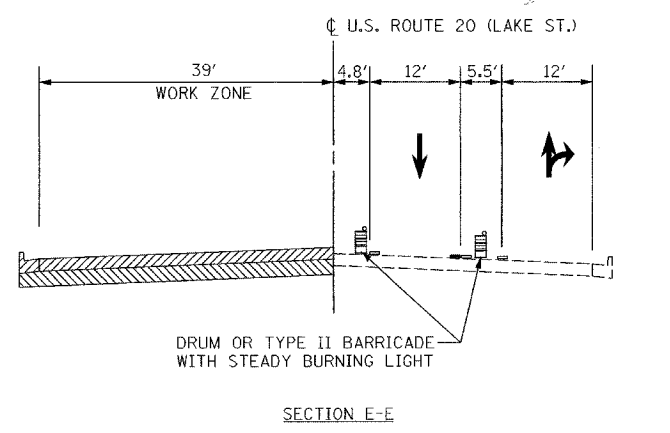
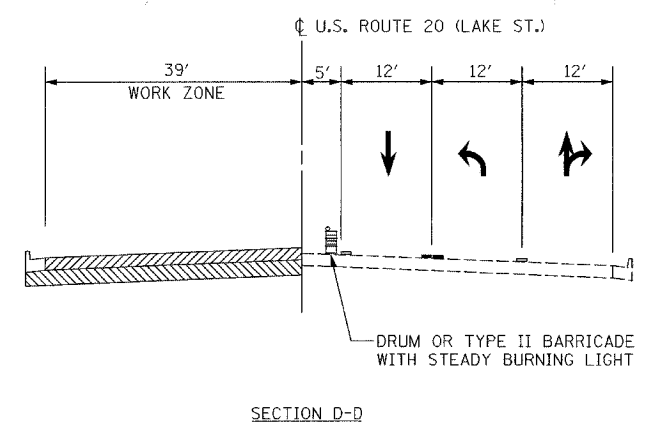
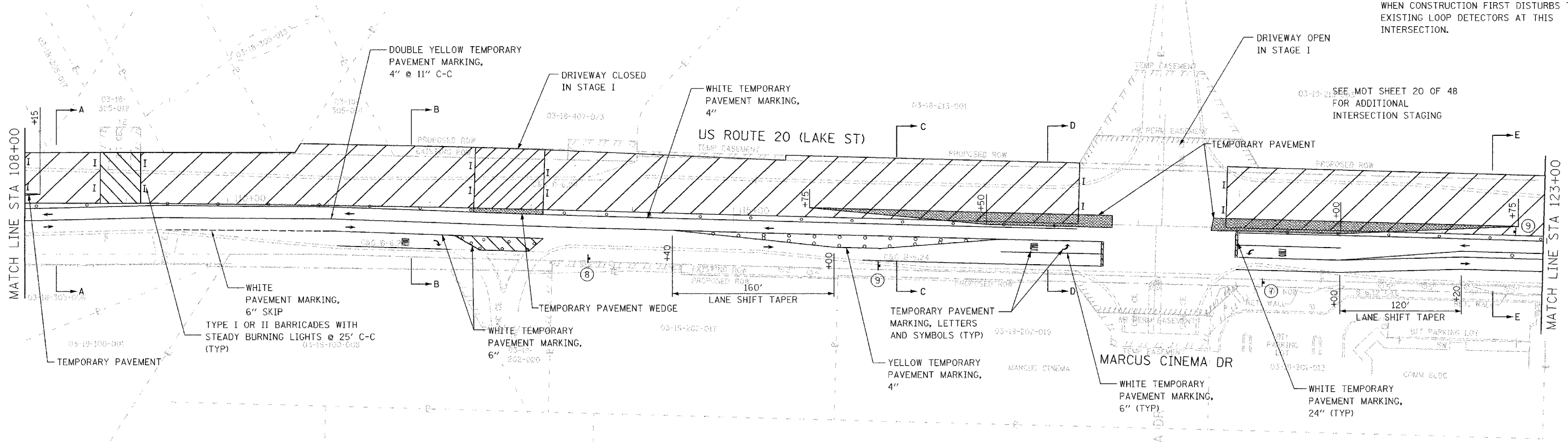


NOTE:
 TEMPORARY SIGNALS REQUIRED AT US20/MARCUS CINEMA DRIVE AND SHALL BE PLACED PRIOR TO STAGE I. THE CONTRACTOR SHALL PROVIDE, INSTALL, AND MAINTAIN VIDEO DETECTION AT THIS INTERSECTION, AT THE TIME WHEN CONSTRUCTION FIRST DISTURBS THE EXISTING LOOP DETECTORS AT THIS INTERSECTION.

FOLL VALLEY COMMONS



REVISIONS	
NAME	DATE

ILLINOIS DEPARTMENT OF TRANSPORTATION

MAINTENANCE OF TRAFFIC
STAGE I

US ROUTE 20 (LAKE STREET)

SCALE: 1"=50'
 DATE: 03/01/05

DRAWN BY: JEC
 CHECKED BY: KN

jll_dcn171484_us20cad1484cm1101-1b.dwg