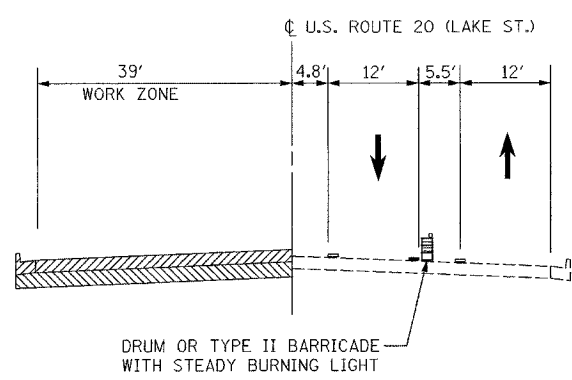
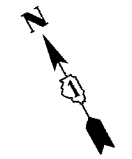


F.A.U. RTE.	SECTION	COUNTY	TOTAL SHEETS	SHEET NO.
3537	5Y-R-4	DUPAGE	392	91
STA 123+00		TO STA 138+00		
FED. ROAD DIST. NO. 1		ILLINOIS FED. AID PROJECT		
CONTRACT NO. 62295				

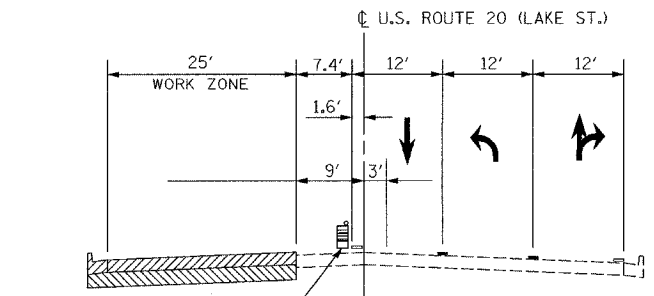
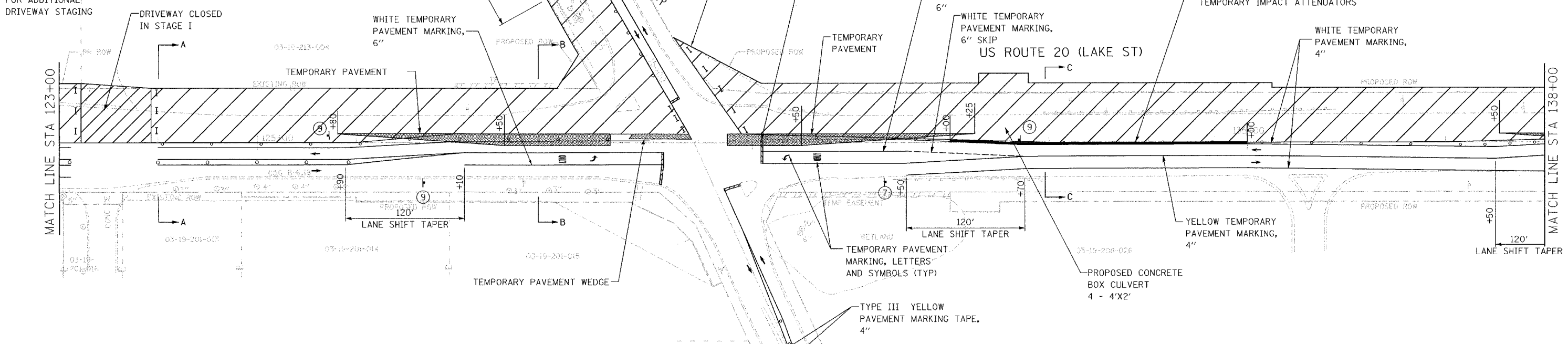


SECTION A-A

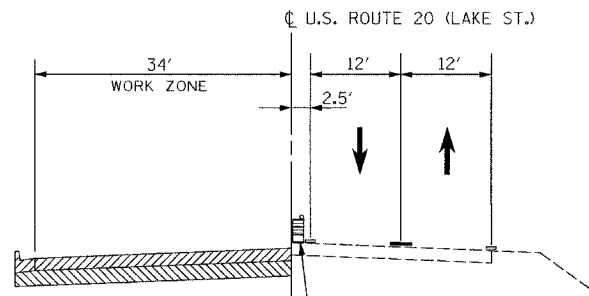
SEE MOT SHEET 20 OF 48 FOR ADDITIONAL DRIVEWAY STAGING

SEE MOT SHEET 21 OF 48 FOR ADDITIONAL INTERSECTION STAGING

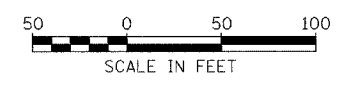
NOTE:
TEMPORARY SIGNALS REQUIRED AT US20/LOMBARD RD AND SHALL BE PLACED PRIOR TO STAGE I



SECTION B-B



SECTION C-C



REVISIONS	
NAME	DATE

ILLINOIS DEPARTMENT OF TRANSPORTATION
MAINTENANCE OF TRAFFIC STAGE I
US ROUTE 20 (LAKE STREET)
SCALE: 1"=50'
DATE: 03/01/05
DRAWN BY: JEC
CHECKED BY: KN

J:\111_d01171464_us20\cad11464om101-1b.sht