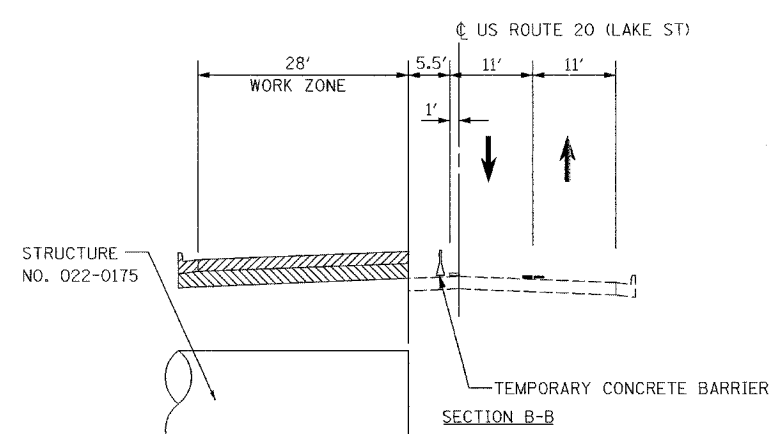
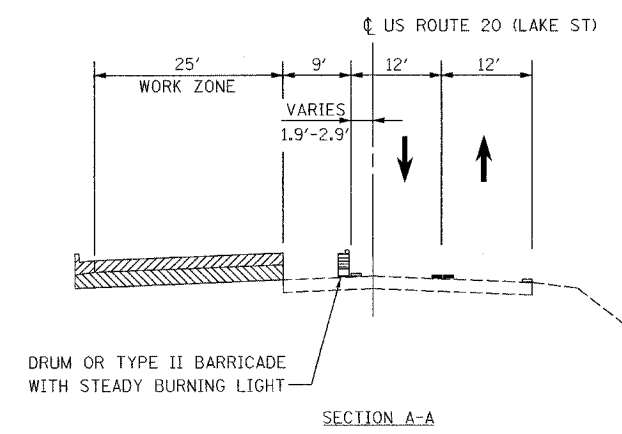
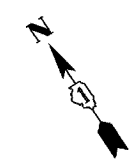
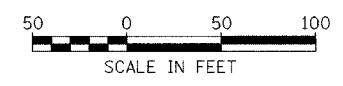
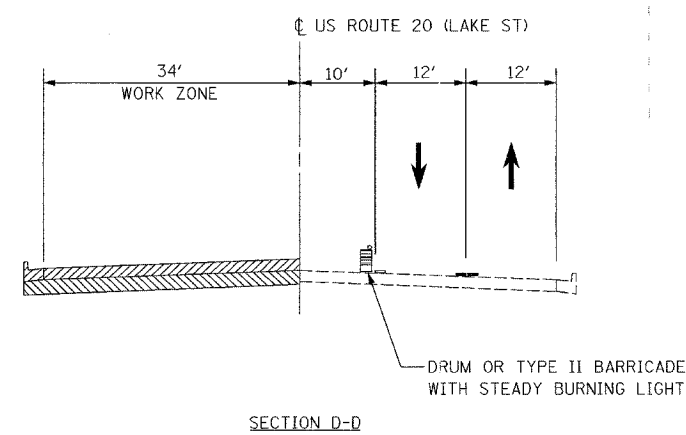
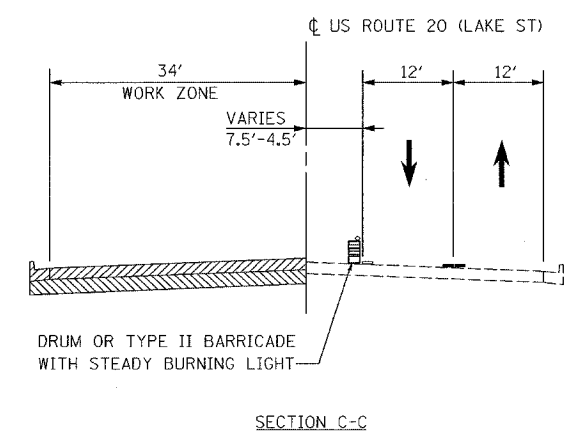
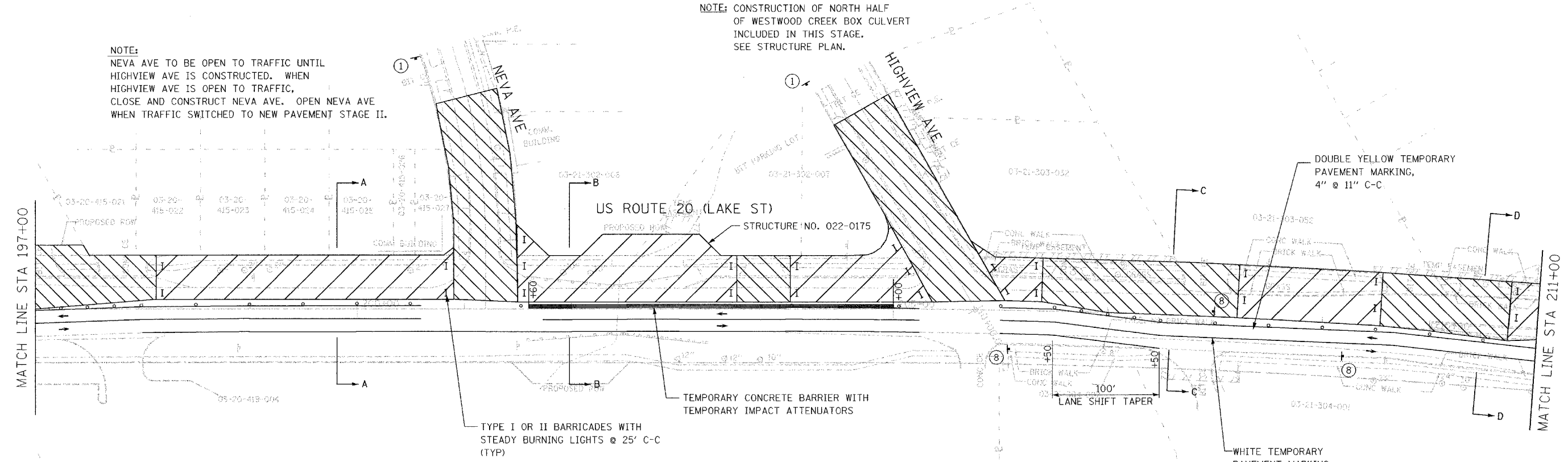


F.A.U. RTE.	SECTION	COUNTY	TOTAL SHEETS	SHEET NO.
3537	5Y-R-4	DUPAGE	342	96
STA 197+00		TO STA 211+00		
FED. ROAD DIST. NO. 1		ILLINOIS FED. AID PROJECT		
CONTRACT NO. 62295				



NOTE: CONSTRUCTION OF NORTH HALF OF WESTWOOD CREEK BOX CULVERT INCLUDED IN THIS STAGE. SEE STRUCTURE PLAN.

NOTE: NEVA AVE TO BE OPEN TO TRAFFIC UNTIL HIGHVIEW AVE IS CONSTRUCTED. WHEN HIGHVIEW AVE IS OPEN TO TRAFFIC, CLOSE AND CONSTRUCT NEVA AVE. OPEN NEVA AVE WHEN TRAFFIC SWITCHED TO NEW PAVEMENT STAGE II.



REVISIONS	
NAME	DATE

ILLINOIS DEPARTMENT OF TRANSPORTATION

MAINTENANCE OF TRAFFIC
STAGE I

US ROUTE 20 (LAKE STREET)

SCALE: 1"=50'
DATE: 03/01/05

DRAWN BY JEC
CHECKED BY KN

J:\11_dct171_464_us20dca011464m1102-1b.sht