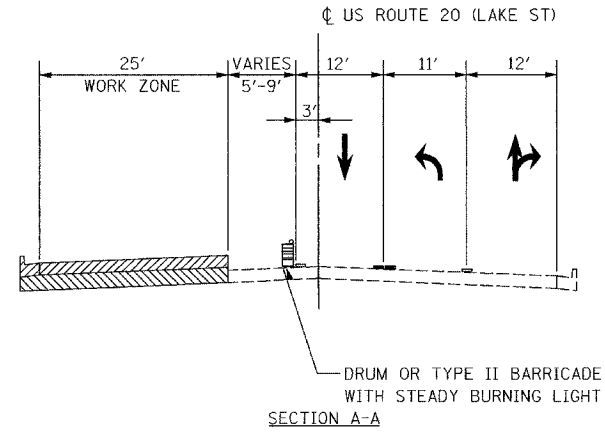
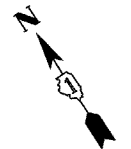
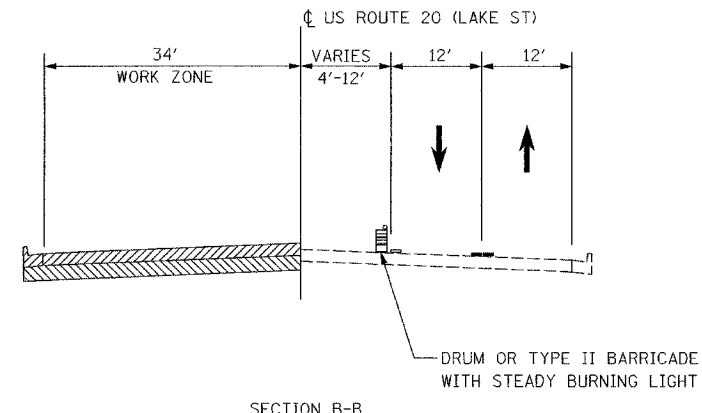
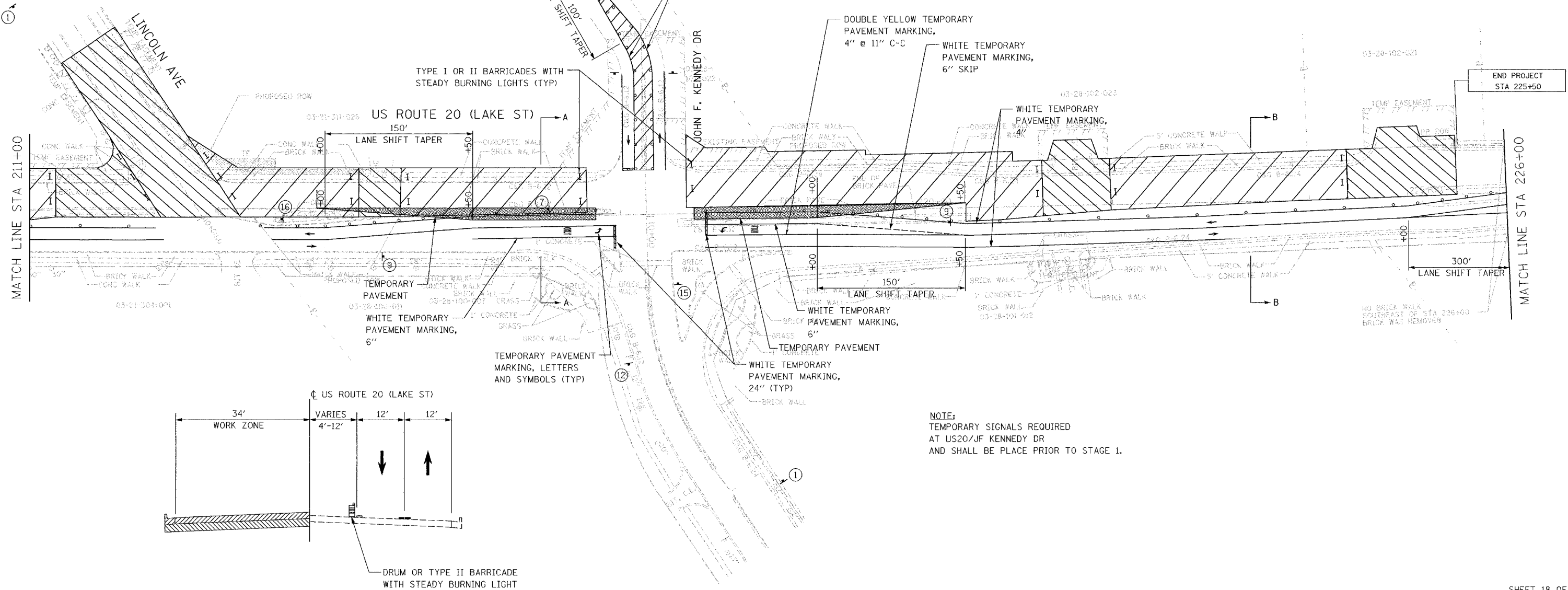


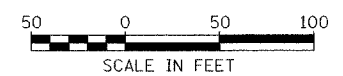
F.A.U. RTE.	SECTION	COUNTY	TOTAL SHEETS	SHEET NO.
3537	5Y-R-4	DUPAGE	392	97
STA 211+00		TO STA 226+00		
FED. ROAD DIST NO. 1		ILLINOIS FED. AID PROJECT		
CONTRACT NO. 62295				



SEE MOT SHEET 24 OF 48 FOR ADDITIONAL INTERSECTION STAGING



NOTE:
TEMPORARY SIGNALS REQUIRED AT US20/JF KENNEDY DR AND SHALL BE PLACE PRIOR TO STAGE 1.



REVISIONS	
NAME	DATE

ILLINOIS DEPARTMENT OF TRANSPORTATION

MAINTENANCE OF TRAFFIC STAGE I

US ROUTE 20 (LAKE STREET)

SCALE: 1"=50'
DATE: 03/01/05

DRAWN BY JEC
CHECKED BY KN

J:\111_dcl\171464_us20\cad\1464m1102-1b.ent