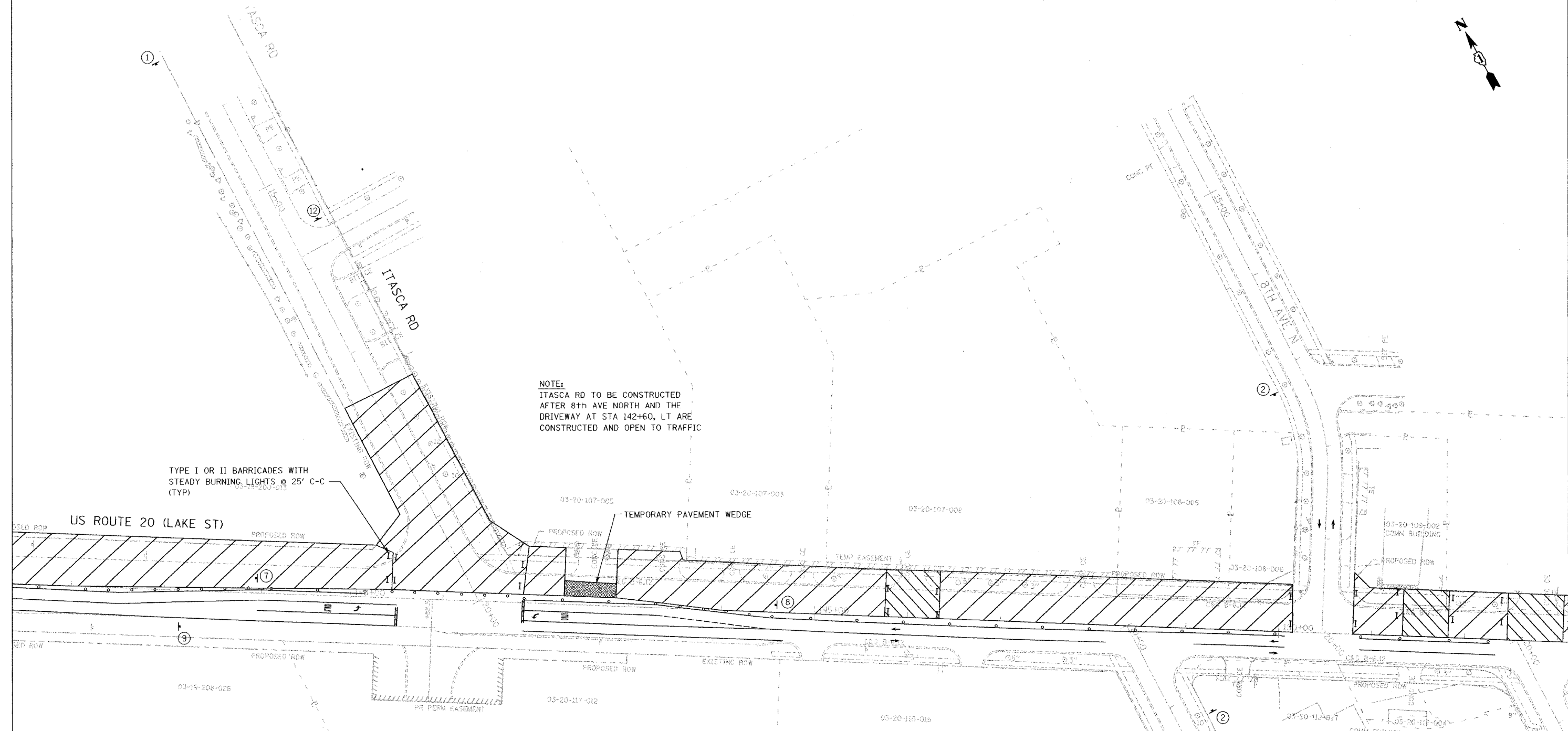
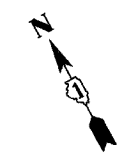


F.A.U. RTE.	SECTION	COUNTY	TOTAL SHEETS	SHEET NO.
3537	5Y-R-4	DUPAGE	397	101
STA 137+00		TO STA 153+00		
FED. ROAD DIST. NO. 1		ILLINOIS FED. AID PROJECT		
CONTRACT NO. 62295				



NOTE:
 ITASCA RD TO BE CONSTRUCTED
 AFTER 8th AVE NORTH AND THE
 DRIVEWAY AT STA 142+60, LT ARE
 CONSTRUCTED AND OPEN TO TRAFFIC

TYPE I OR II BARRICADES WITH
 STEADY BURNING LIGHTS @ 25' C-C
 (TYP)

TEMPORARY PAVEMENT WEDGE

ITASCA RD
 STAGE IA

NOTE:
 US 20 STAGE I PAVEMENT MARKING
 TO REMAIN FOR STAGE IA.

REVISIONS	
NAME	DATE

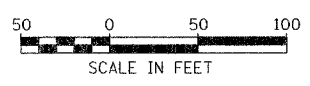
ILLINOIS DEPARTMENT OF TRANSPORTATION

**MAINTENANCE OF TRAFFIC
 STAGE I**

US ROUTE 20 (LAKE STREET)

SCALE: 1"=50'
 DATE: 03/01/05

DRAWN BY JEC
 CHECKED BY KN



I:\illinois\171464_us20\cadd\1464cm1101-1b.dwg