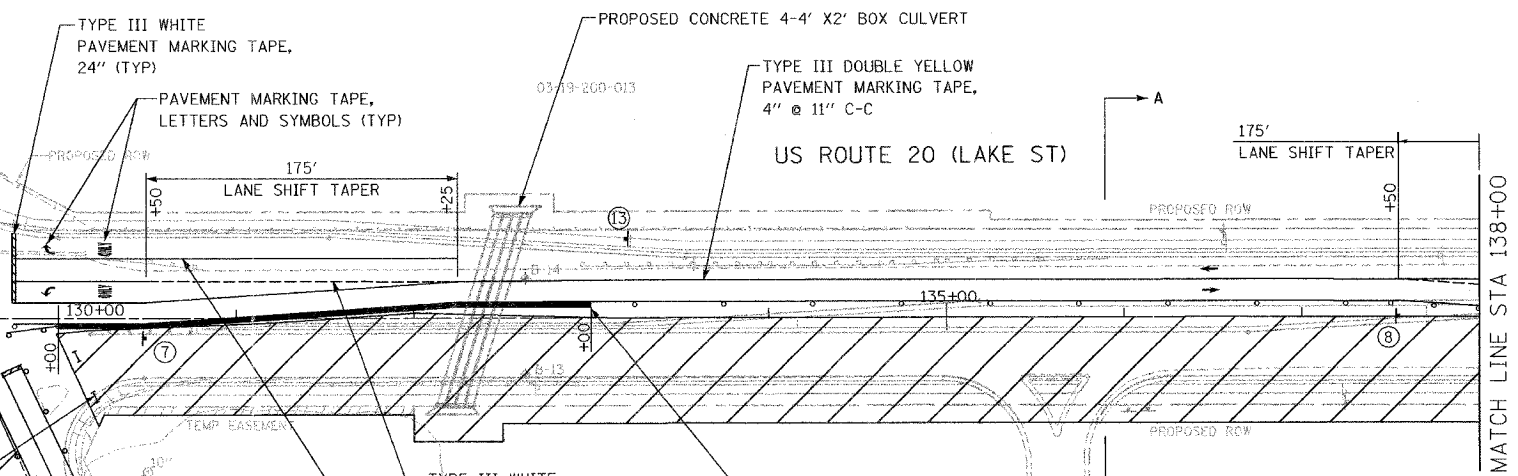
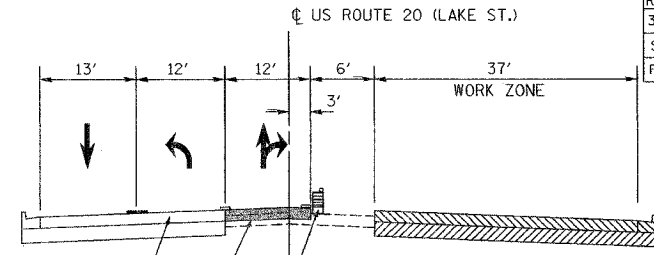
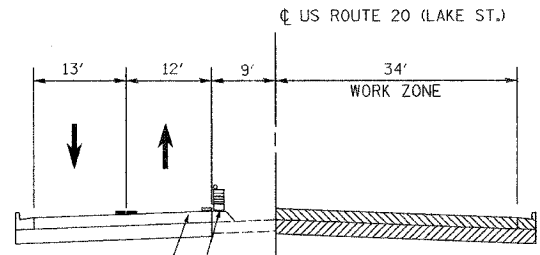
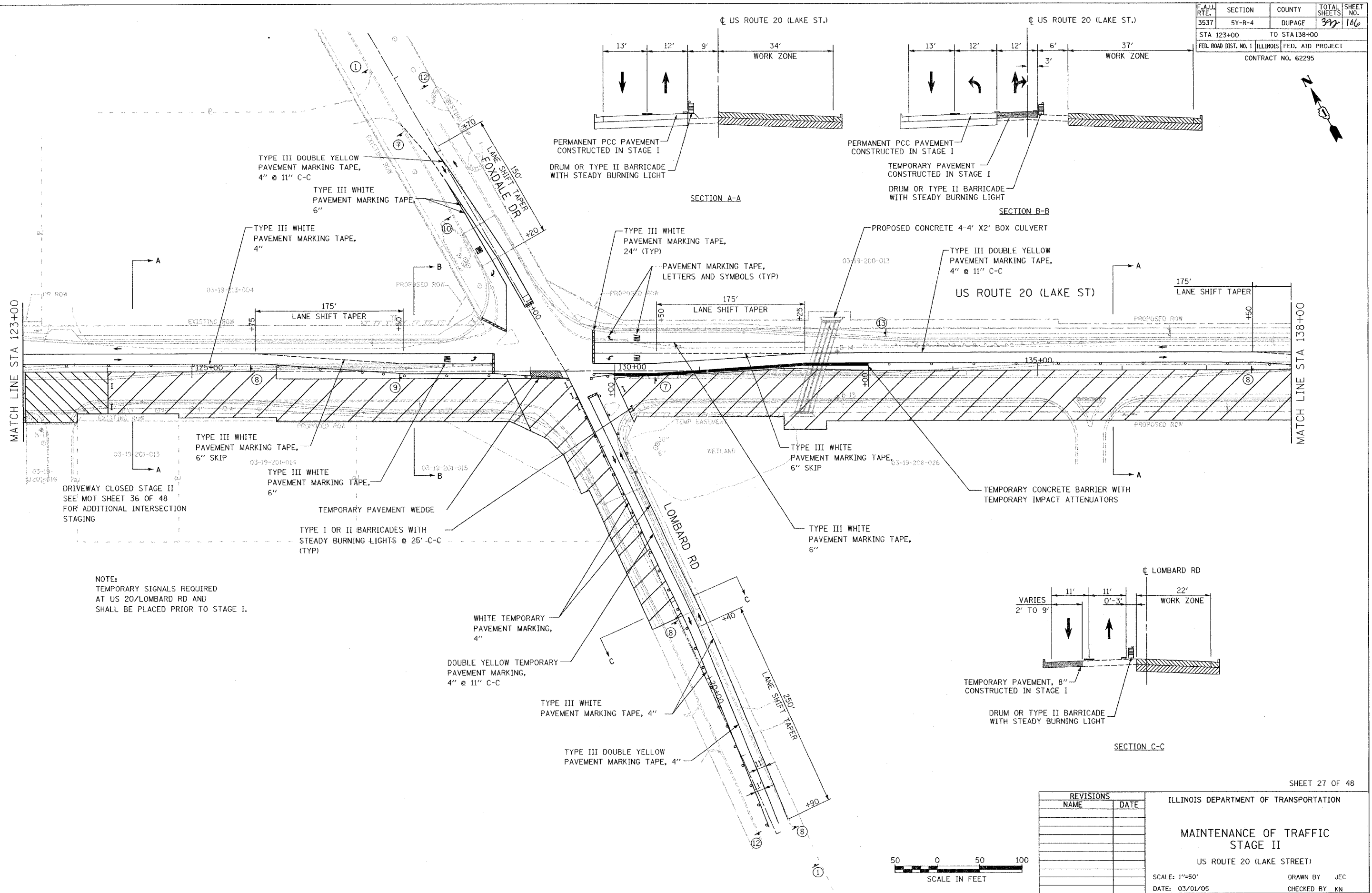


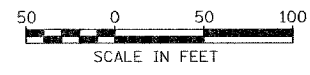
F.A.U. RTE.	SECTION	COUNTY	TOTAL SHEETS	SHEET NO.
3537	5Y-R-4	DUPAGE	37	106
STA 123+00		TO STA 138+00		
FED. ROAD DIST. NO. 1	ILLINOIS	FED. AID PROJECT		
CONTRACT NO. 62295				



NOTE:  
 TEMPORARY SIGNALS REQUIRED  
 AT US 20/LOMBARD RD AND  
 SHALL BE PLACED PRIOR TO STAGE I.

REVISIONS	
NAME	DATE

ILLINOIS DEPARTMENT OF TRANSPORTATION  
**MAINTENANCE OF TRAFFIC  
 STAGE II**  
 US ROUTE 20 (LAKE STREET)  
 SCALE: 1"=50'  
 DATE: 03/01/05  
 DRAWN BY JEC  
 CHECKED BY KN



I:\11\60117\484\_ur20\case1\484cm1201-1b.dwg