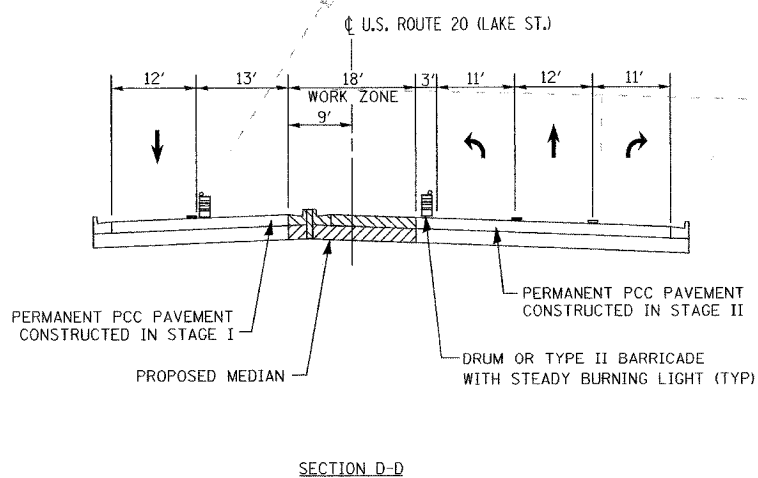
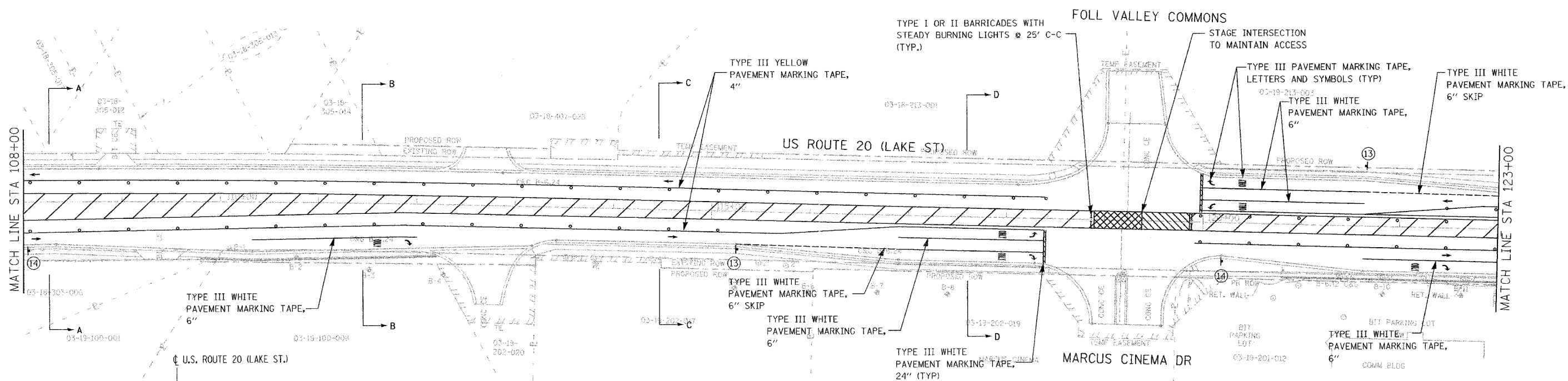
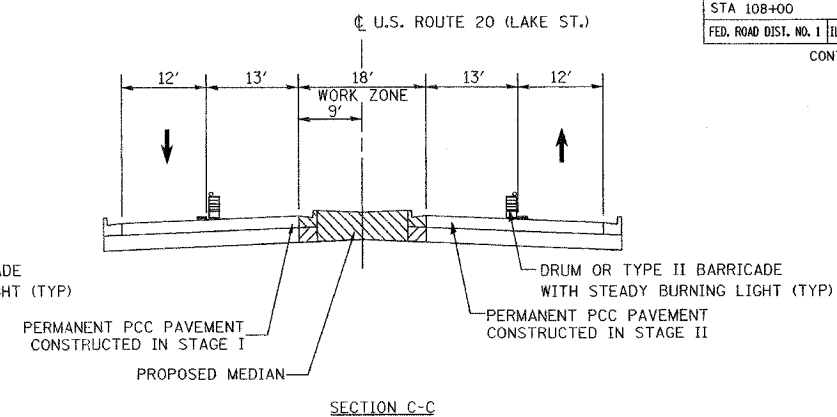
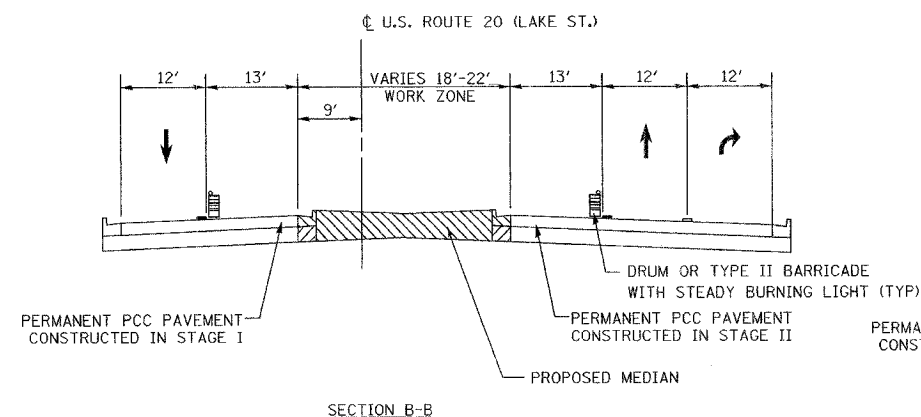
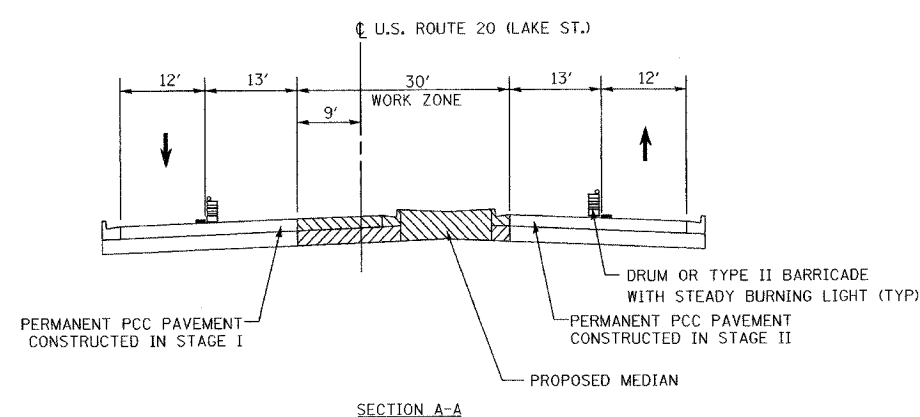
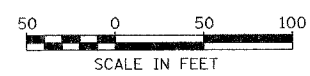


F.A.U. RTE.	SECTION	COUNTY	TOTAL SHEETS	SHEET NO.
3537	5Y-R-4	DUPAGE	392	119
STA 108+00		TO STA 123+00		
FED. ROAD DIST. NO. 1 ILLINOIS FED. AID PROJECT				
CONTRACT NO. 62295				



NOTE:
TEMPORARY SIGNALS REQUIRED
AT US 20/MARCUS CINEMA DR
AND SHALL BE PLACED PRIOR TO STAGE I.



REVISIONS		ILLINOIS DEPARTMENT OF TRANSPORTATION
NAME	DATE	
		MAINTENANCE OF TRAFFIC STAGE III US ROUTE 20 (LAKE STREET) SCALE: 1"=50' DATE: 03/01/05 DRAWN BY: JEC CHECKED BY: KN

I:\111_dcm117_464_us20\cas1\464\dm1301-1b.dgn