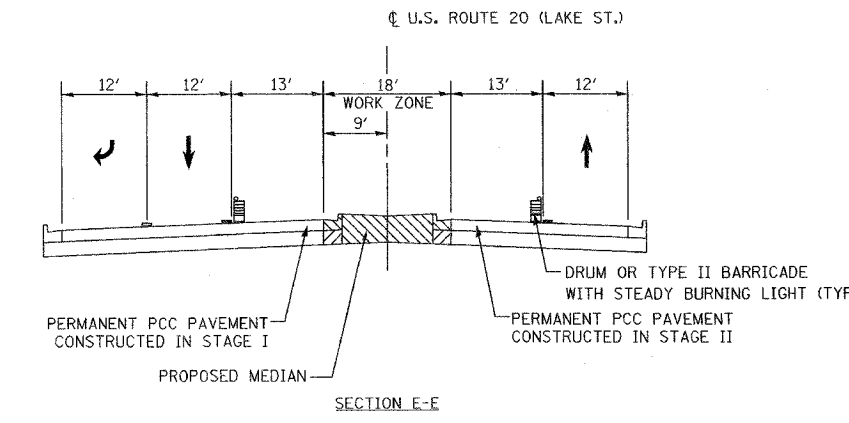
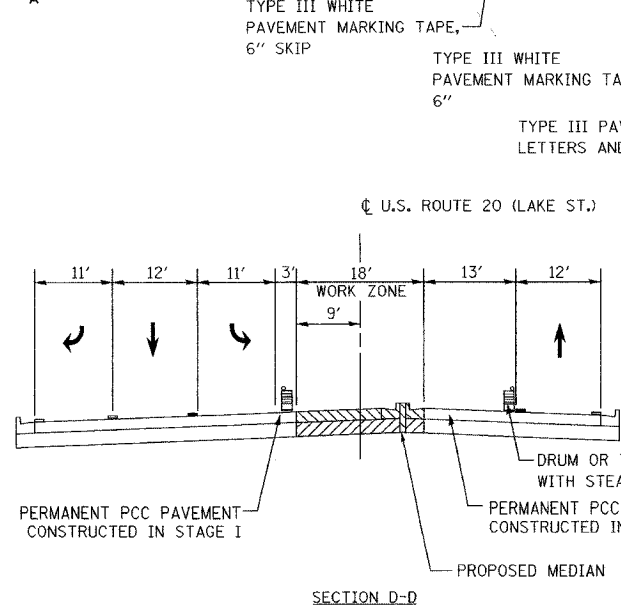
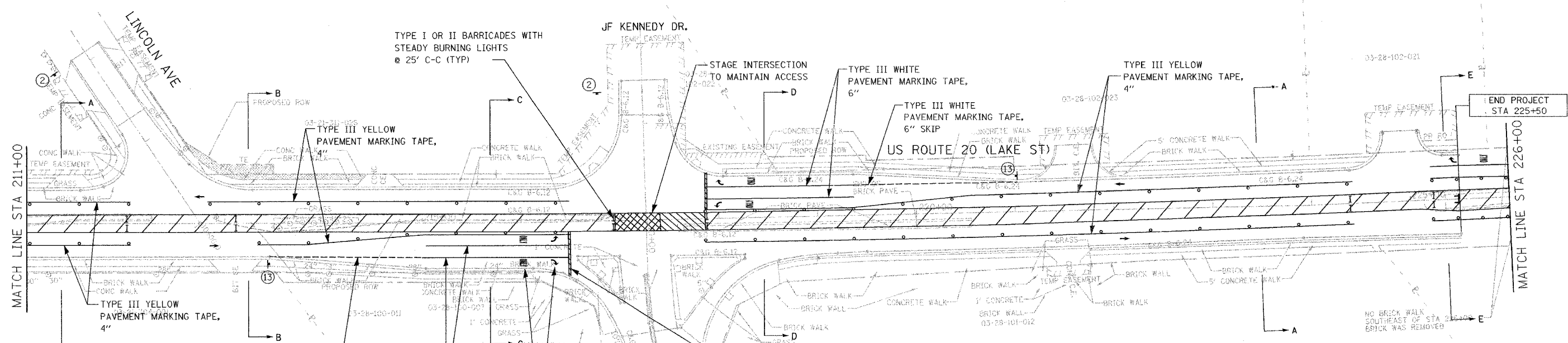
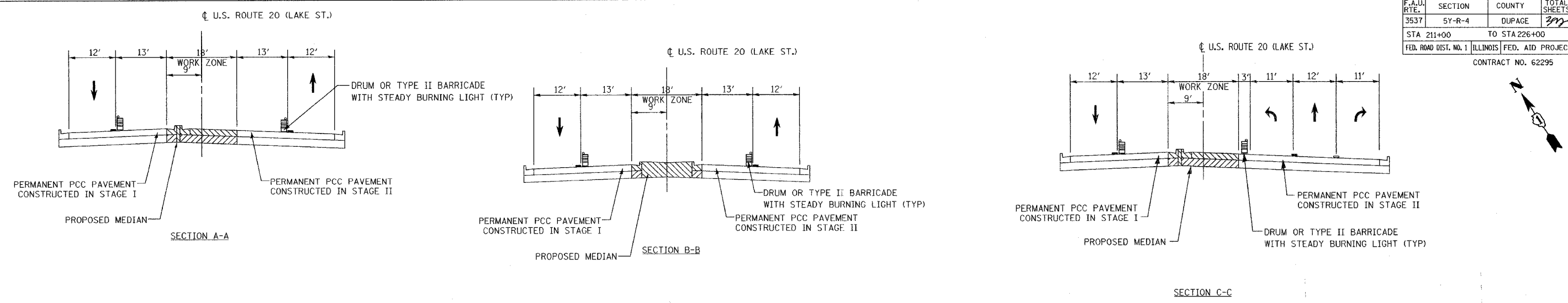
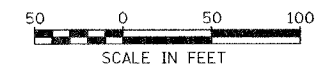


F.A.U. RTE.	SECTION	COUNTY	TOTAL SHEETS	SHEET NO.
3537	5Y-R-4	DUPAGE	372	126
STA 211+00		TO STA 226+00		
FED. ROAD DIST. NO. 1		ILLINOIS FED. AID PROJECT		
CONTRACT NO. 62295				



NOTE:  
 TEMPORARY SIGNALS REQUIRED  
 AT US 20/JF KENNEDY DR  
 AND SHALL BE PLACED PRIOR TO STAGE I.



REVISIONS	
NAME	DATE

SHEET 47 OF 48

ILLINOIS DEPARTMENT OF TRANSPORTATION

**MAINTENANCE OF TRAFFIC  
 STAGE III**

US ROUTE 20 (LAKE STREET)

SCALE: 1"=50'  
 DATE: 03/01/05

DRAWN BY JEC  
 CHECKED BY KN

J:\11\_00\117464\_us20\cadd\1464cm\302-1b.dwg