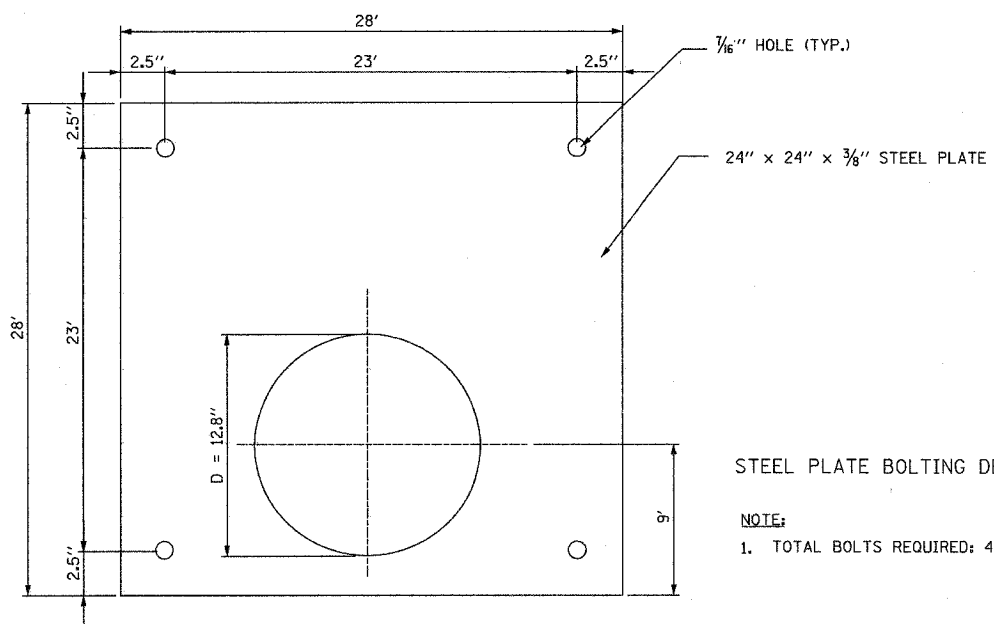


- NOTE:
1. PLATES TO BE GALVANIZED AFTER FABRICATION.
 2. TYPE 7 GRATE WITH RESTRICTOR PLATE AND HARDWARE TO BE INCLUDED IN THE COST OF THE MANHOLE.



- NOTE:
1. TOTAL BOLTS REQUIRED: 4

MANHOLE NUMBER	STATION	RIM ELEV.	INSIDE RESTRICTOR DIAMETER (d) In.	INVERT OF RESTRICTOR ELEV.	INLET PIPE DIA. In.	OUTLET PIPE DIA. In.
2	105+62	729.49	12.8	725.60	24	24

BASIS OF PAYMENT: CATCH BASIN TYPE B, SPECIAL.

ALL DIMENSIONS ARE IN INCHES UNLESS OTHERWISE SHOWN

REVISIONS		ILLINOIS DEPARTMENT OF TRANSPORTATION
NAME	DATE	
		<p>MANHOLE WITH RESTRICTOR PLATE (1 OF 2)</p> <p>U.S. ROUTE 20 (LAKE STREET)</p> <p>SCALE: NTS</p> <p>DATE: 03/01/05</p> <p>DRAWN BY: V.P.</p> <p>CHECKED BY: Y.J.</p>

I:\187\final submittal\final drawings\1461242801-2b.sht